

LED LIGHT ENGINE: **RETROFIT**

LAMP MODULE: **J2** or **M2**

Project Name	
Date	Type
Prepared By	
Comments	
Catalog #	- - - - / - /



eight
LIGHTING

526 Portal Street
Cotati, CA 94931
USA
P 707.794.0888
www.8lighting.com

All No. 8 Lighting fixtures and components are UL Listed to both U.S. and Canadian requirements. No. 8 Lighting trims and lamp modules are protected by one or more U.S. Patents. No. 8 Lighting reserves the right to change details of design, materials, and finish.

© 2026 No. 8 Lighting
Doc # 91138-13.4



PRODUCT FEATURES

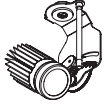
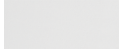





800 SERIES RETROFIT SPECIFICATION SUMMARY

LED Option	Static White Standard Output			Warm Dimming		
	HI	HI-2	HI-3	WD	WD-2	WD-4
Delivered Lumens	1041	1044	949	837	834	867
System Wattage	14	14.5	14.7	14.5	14.5	14.5
Efficacy	74	69	64	58	58	60
CRI	94	94	97	97	97	97
R9	60	63	98	82	77	76
CCT Options	2700K, 3000K			3000-1800K	2800-2200K	3000K-2200K
Optic Options	15, 25, 40	10	10, 15, 25, 40	15, 25, 40		
Color Consistency	2-Step			3-Step		
Optical Accessories	Narrow, Medium, Wide, Extra Wide, Linear Spread, and 2400K, 2700K, 3500K Color Filters					
Adjustability	J2 - 0-45° Tilt, 360° Rotation, Lockable / M2 - 35-90° Rotation, Lockable					
Driver Options	<1% Forward/Reverse Phase (120v), 0.1/1% 0-10v (120-277v), 0.1/1% DALI (120-277v), 0.1/1% EcoSystem (120 or 277v)					
Trim Options	Round/Square Flat, Round/Square Bevel, Round/Square Inset, Round/Square Wall-Wash					
Finish Options	White, Oil-Rubbed Bronze, Pewter, Satin Nickel, Black					
Trim Mounting Options	Flanged, Flangeless Sheetrock, Flangeless Wood					
Trim Accessories	UL Wet Listed and IP54 Rated Lens Options - Clear, Soft Focus, Wall-Wash					
Housing Options	New Construction: Type Non-IC, Type IC-CP Rated CCEA Approved Air-Tight					

Data shown for J2 Lamp Modules with FS/FLS/INS-LG/NL trims.
Static White data shown for 3000K
Warm Dimming data shown for 3000K and 2800K.
See Performance Summaries for additional information.
800 Series Trims specified separately.

PRODUCT SPECIFIER/PRODUCT ORDER NUMBER

LAMP MODULE OPTIONS	TRIM FINISH (Leave blank for J2 module)	LED OPTIONS	OPTIC OPTIONS	OPTICAL ACCESSORIES (Optional)	DRIVER OPTIONS	OUTPUT	EXISTING HOUSING TYPE*
 <p>J2 LED ADJUSTABLE 45° tilt, full 360° rotation with tool-less locking vertical and horizontal adjustment</p>	 <p>WH WHITE</p>  <p>OB* OIL-RUBBED BRONZE</p> <p>*Specialty finish</p>	<p>HI-27 2700K White LED</p> <p>HI 3000K White LED</p> <p>HI-2-27* 2700K White LED</p> <p>HI-2* 3000K White LED</p> <p>HI-3-27† 2700K White High R9 LED</p> <p>HI-3† 3000K White High R9 LED</p> <p>WD 3000-1800K Warm Dim LED</p> <p>WD-2 2800-2200K Warm Dim LED</p> <p>WD-4 3000-2200K Warm Dim LED</p> <p>*For use with 10° optic only.</p> <p>† Available with J2 Lamp Module only.</p>	<p>10* 10° Very Narrow Spot</p> <p>15 15° Narrow Spot</p> <p>25 25° Narrow Flood</p> <p>40 40° Flood</p> <p>*For use with HI-2 or HI-3 LED options only.</p>	<p>NSP Narrow Softening Lens</p> <p>NFL Medium Softening Lens</p> <p>FL Wide Softening Lens</p> <p>WFL Extra Wide Softening Lens</p> <p>LS Linear Spread Softening Lens</p> <p>CF24* 2400K Color Filtering Lens</p> <p>CF27** 2700K Color Filtering Lens</p> <p>CF35** 3500K Color Filtering Lens</p> <p>*For use with HI, HI-2, and HI-3 2700K LED options only.</p> <p>**For use with HI, HI-2, and HI-3 3000K LED options only.</p>	<p>PR1-8 Premium Forward or Reverse-Phase <1% Dimming</p> <p>EL1-8† EldoLED 0-10v 1% Dimming</p> <p>EL1-01-8† EldoLED 0-10v 0.1% Dimming</p> <p>EL2-8† EldoLED DALI 1% Dimming</p> <p>EL2-01-8† EldoLED DALI 0.1% Dimming</p> <p>LU2-8† Lutron Hi-Lume LDE1 Eco-System 1% Dimming</p> <p>LU4-8 Lutron Hi-Lume PEQOE EcoSystem 0.1% Dimming</p> <p>†Not available for use with housing models 801 or 802.</p>	<p>350 Standard output for HI-3, HI-3-27, WD, WD-2, or WD-4 LED Options</p> <p>1000 Standard output for HI, HI-27, HI-2, or HI-2-27 LED Options</p>	<p>801 New Construction – Non-I.C.</p> <p>802 New Construction – Airtight-I.C.</p> <p>803 New Construction – Airtight-I.C.</p> <p>* Existing housing type required for correct dimming driver mounting configuration.</p>
 <p>M2-S* LED MIRROR REFLECTOR module w/integral 4" SQUARE trim plate fits into square Seamless Series™ trim assemblies</p>							
 <p>M2-R* LED MIRROR REFLECTOR module w/integral 4" ROUND trim plate fits into round Seamless Series™ trim assemblies</p> <p>*M2 modules require trim finish selection.</p>							

Lamp Module, LED, Optic Option, and Accessory Notes

J2 Fully adjustable lamp module features patented tool-free adjustment mechanism. Use for adjustable accent, wall wash*, and general lighting applications. *For wall washing: specify 40° optic option with **HI**, **HI-3**, **WD**, **WD-2**, or **WD-4** LED or 10° optic option and **FL** lens with **HI-2** LED. Requires **WW-8** wall wash accessory, specified with **FS/FR** or **FLS/FLR** (1.75" aperture) **800 Series** trims. **M2** Adjustable lamp module features 35-90° vertical* and 90° horizontal adjustment. *Vertical adjustment range based on ceiling thickness and trim type used. See Page 7 for additional details. Use on sloped ceilings for adjustable accent, wall wash, and general lighting applications. Lamp module assembly includes either a SQUARE or ROUND trim plate for use with **800 Series Seamless** trims. To ensure fixture to fixture color consistency, use of the same LED option with adjacent fixtures is recommended. One field interchangeable optic option included standard. Up to two additional optical accessories can be accommodated.

Driver and Output Option Notes

0-10v driver options are configured for linear control. DALI driver options are configured for logarithmic control. No.8 Lighting conducts extensive testing to establish compatibility with many dimmer types. For a complete list of compatible dimmers, see 8lighting.com/resources-downloads. Outputs vary depending on LED type, trim type, and optical accessories used. For photometric files in PDF and IES formats, see 8lighting.com/800-series-photometry.

Installation Notes

Ambient temperatures in ceiling space should not exceed 40°C (104°F) during normal operation. For models with **EL1/EL1-01-8**, **EL2/EL2-01-8**, or **LU2-8** dimming options, ambient temperatures should not exceed 25°C (77°F).

Warranty

Retrofit LED lamp modules and drivers are covered by a 2 year limited warranty. For specific warranty details and limitations, see 8lighting.com/resources-downloads.

J2 LAMP MODULE w/ **FS/FLS/INS** 1.75" APERTURE TRIM - PERFORMANCE SUMMARY

LED	OUTPUT	CCT	CRI	R9	Delivered Lumens	System Wattage	Delivered LPW
HI-27	1000	2700K	94	59	737-883	14	53-63
HI	1000	3000K	94	60	792-949	14	57-68
HI-2-27	1000	2700K	94	62	955	14.5	66
HI-2	1000	3000K	94	63	1027	14.5	71
HI-3-27	350	2700K	97	96-98	666-811	14.7	45-55
HI-3	350	3000K	97	96-98	716-872	14.7	49-59
WD	350	3000-1800K	97	82	602-735	14.5	42-51
WD-2	350	2800-2200K	96	78	598-731	14.5	41-50
WD-4	350	3000-2200K	97	76	648-767	14.5	45-53

Performance summary for **HI** LED with 15°, 25°, and 40° optic options, **HI-2** LED with 10° optic option, and **HI-3** LED with 10°, 15°, 25°, and 40° optic options.
Performance summary for **WD** and **WD-4** LED at 3000K and **WD-2** LED at 2800K with 15°, 25°, and 40° optic options.

J2 LAMP MODULE w/ **FR/FLR/INR** 1.75" APERTURE TRIM - PERFORMANCE SUMMARY

LED	OUTPUT	CCT	CRI	R9	Delivered Lumens	System Wattage	Delivered LPW
HI-27	1000	2700K	94	59	714-875	14	51-63
HI	1000	3000K	94	60	768-941	14	55-67
HI-2-27	1000	2700K	94	62	946	14.5	65
HI-2	1000	3000K	94	63	1017	14.5	70
HI-3-27	350	2700K	97	96-98	646-804	14.7	44-55
HI-3	350	3000K	97	96-98	695-865	14.7	48-59
WD	350	3000-1800K	97	81	600-739	14.5	41-51
WD-2	350	2800-2200K	97	77	595-739	14.5	41-51
WD-4	350	3000-2200K	97	76	628-750	14.5	43-52

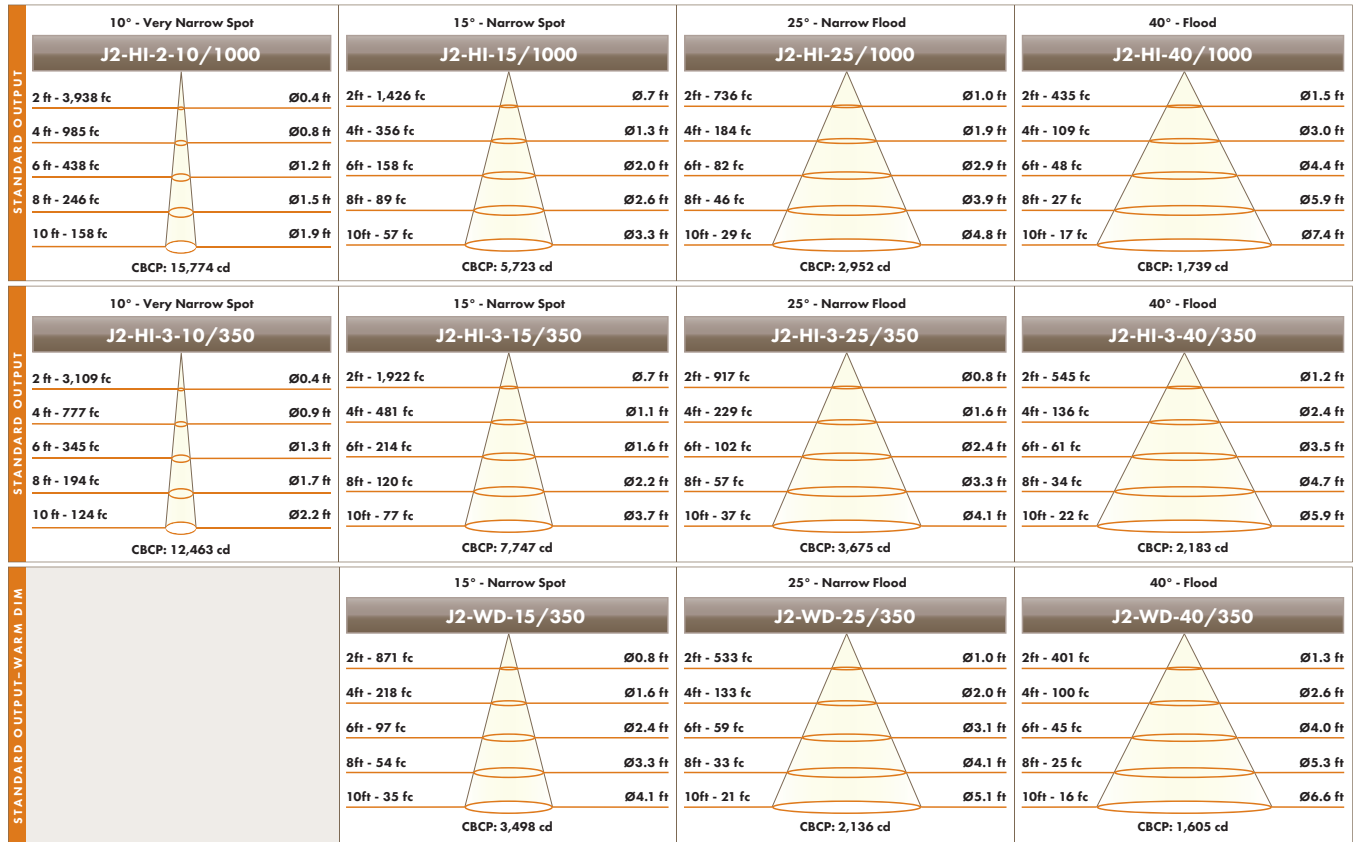
Performance summary for **HI** LED with 15°, 25°, and 40° optic options, **HI-2** LED with 10° optic option, and **HI-3** LED with 10°, 15°, 25°, and 40° optic options.
Performance summary for **WD** and **WD-4** LED at 3000K and **WD-2** LED at 2800K with 15°, 25°, and 40° optic options.

J2 LAMP MODULE w/ **1.75"** APERTURE TRIM - OPTICAL OPTIONS AND ACCESSORY PERFORMANCE SUMMARY

OPTIC OPTIONS	LED OPTION	BEAM ENHANCING LENS (OPTIONAL)*				
		+ NSP	+ NFL	+ FL	+ WFL	+ LS
10° Very Narrow Spot	HI-2	14°	25°	44°	47°	13° x 39°
10° Very Narrow Spot	HI-3	14°	23°	40°	46°	14° x 41°
15° Narrow Spot	HI	21°	30°	45°	51°	21° x 40°
15° Narrow Spot	HI-3	17°	26°	42°	50°	17° x 43°
15° Narrow Spot	WD/WD-2/WD-4	24°	31°	36°	50°	25° x 41°
25° Narrow Flood	HI	28°	34°	47°	52°	30° x 39°
25° Narrow Flood	HI-3	24°	30°	47°	52°	24° x 49°
25° Narrow Flood	WD/WD-2/WD-4	29°	34°	46°	52°	32° x 38°
40° Flood	HI	41°	43°	43°	59°	40° x 52°
40° Flood	HI-3	33°	37°	49°	54°	32° x 51°
40° Flood	WD/WD-2/WD-4	37°	40°	49°	54°	37° x 47°

*Beam enhancing lens used in combination with 10°, 15°, 25°, or 40° optic to achieve desired beam spread.

J2 LAMP MODULE w/ FS/FLS/INS 1.75" APERTURE TRIM - CONE OF LIGHT DIAGRAMS



Performance shown for 3000K. Output varies by CCT.

J2 LAMP MODULE w/ FS/FLS/INS-LG/NL 2.75" APERTURE TRIM - PERFORMANCE SUMMARY

LED	OUTPUT	CCT	CRI	R9	Delivered Lumens	System Wattage	Delivered LPW
HI-27	1000	2700K	94	59	838-968	14	60-69
HI	1000	3000K	94	60	901-1041	14	64-74
HI-2-27	1000	2700K	94	62	971	14.5	67
HI-2	1000	3000K	94	63	1044	14.5	72
HI-3-27	350	2700K	97	96-98	760-883	14.7	52-60
HI-3	350	3000K	97	96-98	817-949	14.7	56-64
WD	350	3000-1800K	97	82	727-837	14.5	50-58
WD-2	350	2800-2200K	96	77	728-834	14.5	50-58
WD-4	350	3000-2200K	97	76	769-867	14.5	53-60

Performance summary for HI LED with 15°, 25°, and 40° optic options, HI-2 LED with 10° optic option, and HI-3 LED with 10°, 15°, 25°, and 40° optic options.
Performance summary for WD and WD-4 LED at 3000K and WD-2 LED at 2800K with 15°, 25°, and 40° optic options.

J2 LAMP MODULE w/ FR/FLR/INR-LG/NL 2.75" APERTURE TRIM - PERFORMANCE SUMMARY

LED	OUTPUT	CCT	CRI	R9	Delivered Lumens	System Wattage	Delivered LPW
HI-27	1000	2700K	94	59	846-976	14	60-70
HI	1000	3000K	94	60	910-1049	14	65-75
HI-2-27	1000	2700K	94	62	976	14.5	67
HI-2	1000	3000K	94	63	1049	14.5	72
HI-3-27	350	2700K	97	96-98	766-856	14.7	52-58
HI-3	350	3000K	97	96-98	824-920	14.7	56-62
WD	350	3000-1800K	97	81	745-862	14.5	51-59
WD-2	350	2800-2200K	97	77	741-849	14.5	51-59
WD-4	350	3000-2200K	97	76	772-868	14.5	53-60

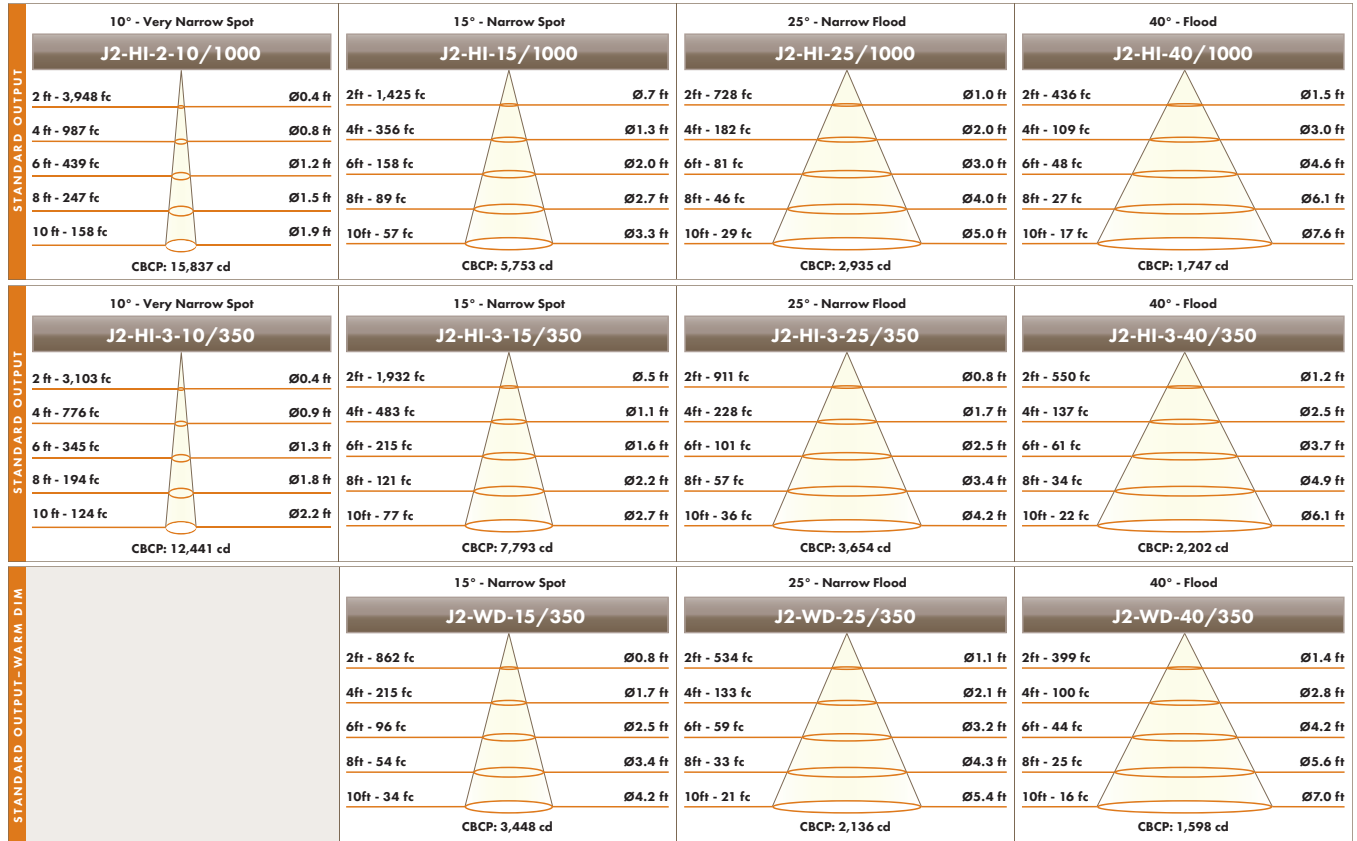
Performance summary for HI LED with 15°, 25°, and 40° optic options, HI-2 LED with 10° optic option, and HI-3 LED with 10°, 15°, 25°, and 40° optic options.
Performance summary for WD and WD-4 LED at 3000K and WD-2 LED at 2800K with 15°, 25°, and 40° optic options.

J2 LAMP MODULE w/ 2.75" APERTURE TRIM - OPTICAL OPTIONS AND ACCESSORY PERFORMANCE SUMMARY

OPTIC OPTIONS	LED OPTION	BEAM ENHANCING LENS (OPTIONAL)*				
		+ NSP	+ NFL	+ FL	+ WFL	+ LS
10° Very Narrow Spot	HI-2	14°	24°	43°	47°	13° x 39°
10° Very Narrow Spot	HI-3	14°	24°	48°	58°	14° x 51°
15° Narrow Spot	HI	21°	31°	54°	67°	22° x 48°
15° Narrow Spot	HI-3	17°	27°	51°	62°	17° x 51°
15° Narrow Spot	WD/WD-2/WD-4	24°	33°	54°	66°	26° x 48°
25° Narrow Flood	HI	29°	37°	57°	71°	30° x 55°
25° Narrow Flood	HI-3	24°	32°	55°	65°	25° x 60°
25° Narrow Flood	WD/WD-2/WD-4	31°	38°	58°	70°	70° x 71°
40° Flood	HI	42°	45°	46°	80°	41° x 63°
40° Flood	HI-3	34°	35°	62°	71°	34° x 65°
40° Flood	WD/WD-2/WD-4	39°	44°	64°	77°	76° x 77°

*Beam enhancing lens used in combination with 10°, 15°, 25°, or 40° optic to achieve desired beam spread.

J2 LAMP MODULE w/ FS/FLS/INS-LG/NL 2.75" APERTURE TRIM - CONE OF LIGHT DIAGRAMS



J2 LAMP MODULE w/ FS/FLS TRIM + WW-8 WALL WASH ACCESSORY - PERFORMANCE SUMMARY

LED	OUTPUT	OPTIC OPTION	CCT	CRI	R9	Delivered Lumens	System Wattage	Delivered LPW
HI-27	1000	40	2700K	94	57	617	14	44
HI	1000	40	3000K	94	58	663	14	47
HI-2-27	1000	10-FL	2700K	94	61	471	14.5	32
HI-2	1000	10-FL	3000K	94	62	506	14.5	35
HI-3-27	350	40	2700K	97	98	564	14.7	38
HI-3	350	40	3000K	97	98	606	14.7	41
WD	350	40	3000-1800K	97	83	532	14.5	37
WD-2	350	40	2800-2200K	97	78	528	14.5	36
WD-4	350	40	3000-2200K	97	76	555	14.5	38

Performance summary for **WD** and **WD-4** LED at 3000K and **WD-2** LED at 2800K.

J2-HI-40 LAMP MODULE w/ FS/FLS TRIM + WW-8 WALL WASH ACCESSORY – FOOTCANDLES ON WALL

DISTANCE TO WALL		2.0 ft						2.5 ft						
ON CENTER SPACING			2.0 ft			2.5 ft			2.5 ft			3.0 ft		
	DISTANCE FROM CEILING	0.5 ft	1.0	1.1	1.0	0.9	0.8	0.9	0.3	0.3	0.3	0.3	0.2	0.3
		1.5 ft	27.3	31.0	27.3	25.1	25.0	25.1	13.4	14.8	13.4	12.6	12.1	12.6
		2.5 ft	28.0	32.6	28.0	25.2	28.8	25.2	19.6	22.8	19.6	18.1	20.0	18.1
		3.5 ft	18.4	20.8	18.4	16.7	19.3	16.7	16.1	18.7	16.1	14.8	17.2	14.8
		4.5 ft	11.3	12.4	11.3	10.5	11.8	10.5	11.2	12.7	11.2	10.4	12.0	10.4
		5.5 ft	7.1	7.6	7.1	6.7	7.3	6.7	7.6	8.4	7.6	7.1	8.0	7.1
		6.5 ft	4.6	4.9	4.6	4.4	4.8	4.4	5.2	5.6	5.2	4.9	5.4	4.9
		7.5 ft	3.1	3.3	3.1	3.0	3.2	3.0	3.6	3.9	3.6	3.5	3.8	3.5
		8.5 ft	2.2	2.3	2.2	2.2	2.3	2.2	2.6	2.8	2.6	2.5	2.7	2.5
		9.5 ft	1.6	1.7	1.6	1.6	1.6	1.6	1.9	2.0	1.9	1.9	2.0	1.9

Note: With **HI** LED option, use 40° optic and 20° aiming angle for optimal performance. Data shown for 3000K CCT.

J2-WD-40 LAMP MODULE w/ FS/FLS TRIM + WW-8 WALL WASH ACCESSORY – FOOTCANDLES ON WALL

DISTANCE TO WALL		2.0 ft						2.5 ft						
ON CENTER SPACING			2.0 ft			2.5 ft			2.5 ft			3.0 ft		
	DISTANCE FROM CEILING	0.5 ft	1.1	1.4	1.1	1.0	0.9	1.0	0.3	0.4	0.3	0.3	0.3	0.3
		1.5 ft	21.8	25.5	21.8	19.8	20.3	19.8	10.5	12.0	10.5	9.7	9.8	9.7
		2.5 ft	23.8	28.4	23.8	21.2	24.9	21.2	16.3	19.5	16.3	14.9	17.0	14.9
		3.5 ft	16.0	18.2	16.0	14.4	16.9	14.4	13.8	16.3	13.8	12.6	14.9	12.6
		4.5 ft	9.8	10.8	9.8	9.1	10.3	9.1	11.1	11.1	11.1	9.0	10.5	9.0
		5.5 ft	6.2	6.6	6.2	5.8	6.4	5.8	7.3	7.3	7.3	6.2	7.0	6.2
		6.5 ft	4.0	4.2	4.0	3.8	4.1	3.8	4.9	4.9	4.9	4.3	4.7	4.3
		7.5 ft	2.7	2.8	2.7	2.7	2.8	2.7	3.4	3.4	3.4	3.0	3.3	3.0
		8.5 ft	1.9	2.0	1.9	1.9	2.0	1.9	2.4	2.4	2.4	2.2	2.4	2.2
		9.5 ft	1.4	1.4	1.4	1.4	1.4	1.4	1.7	1.8	1.7	1.6	1.7	1.6

Note: With **WD**, **WD-2**, or **WD-4** LED option, use 40° optic and 20° aiming angle for optimal performance. Data shown for 3000K CCT.

J2 LAMP MODULE w/ FR/FLR TRIM + WW-8 WALL WASH ACCESSORY - PERFORMANCE SUMMARY

LED	OUTPUT	OPTIC OPTION	CCT	CRI	R9	Delivered Lumens	System Wattage	Delivered LPW
HI-27	1000	40	2700K	94	57	545	14	39
HI	1000	40	3000K	94	58	586	14	42
HI-2-27	1000	10-FL	2700K	94	61	420	14.5	29
HI-2	1000	10-FL	3000K	94	62	452	14.5	31
HI-3-27	350	40	2700K	97	98	513	14.7	35
HI-3	350	40	3000K	97	98	552	14.7	38
WD	350	40	3000-1800K	97	82	479	14.5	33
WD-2	350	40	2800-2200K	97	78	480	14.5	33
WD-4	350	40	3000-2200K	97	78	506	14.5	35

Performance summary for **WD** and **WD-4** LED at 3000K and **WD-2** LED at 2800K.

J2-HI-40 LAMP MODULE w/ FR/FLR TRIM + WW-8 WALL WASH ACCESSORY – FOOTCANDLES ON WALL

DISTANCE TO WALL		2.0 ft						2.5 ft						
		ON CENTER SPACING		2.0 ft			2.5 ft			2.5 ft			3.0 ft	
	DISTANCE FROM CEILING	0.5 ft	0.8	0.8	0.8	0.8	0.5	0.8	0.2	0.2	0.2	0.2	0.2	0.2
		1.5 ft	25.1	29.1	25.1	22.8	23.2	22.8	12.1	13.6	12.1	11.3	10.9	11.3
		2.5 ft	26.4	31.0	26.4	23.7	27.1	23.7	18.2	21.4	18.2	16.7	18.7	16.7
		3.5 ft	17.7	20.2	17.7	16.0	18.7	16.0	15.3	17.9	15.3	14.0	16.3	14.0
		4.5 ft	10.9	12.0	10.9	10.1	11.4	10.1	10.8	12.3	10.8	10.0	11.6	10.0
		5.5 ft	6.8	7.3	6.8	6.4	7.1	6.4	7.3	8.1	7.3	6.9	7.8	6.9
		6.5 ft	4.4	4.7	4.4	4.2	4.6	4.2	5.0	5.4	5.0	4.7	5.2	4.7
		7.5 ft	3.0	3.1	3.0	2.9	3.1	2.9	3.5	3.7	3.5	3.3	3.6	3.3
		8.5 ft	2.1	2.2	2.1	2.0	2.1	2.0	2.5	2.6	2.5	2.4	2.6	2.4
		9.5 ft	1.5	1.6	1.5	1.5	1.5	1.5	1.8	1.9	1.8	1.8	1.9	1.8

Note: With **HI** LED option, use 40° optic and 20° aiming angle for optimal performance. Data shown for 3000K CCT.

J2-WD-40 LAMP MODULE w/ FR/FLR TRIM + WW-8 WALL WASH ACCESSORY – FOOTCANDLES ON WALL

DISTANCE TO WALL		2.0 ft						2.5 ft						
		ON CENTER SPACING		2.0 ft			2.5 ft			2.5 ft			3.0 ft	
	DISTANCE FROM CEILING	0.5 ft	1.1	1.0	1.1	1.0	0.7	1.0	0.4	0.3	0.4	0.3	0.2	0.3
		1.5 ft	19.3	21.6	19.3	17.5	17.5	17.5	9.1	10.0	9.1	8.5	8.1	8.5
		2.5 ft	22.1	25.3	22.1	19.7	22.3	19.7	14.8	16.8	14.8	13.5	14.6	13.5
		3.5 ft	15.3	17.1	15.3	13.7	16.0	13.7	13.0	14.8	13.0	11.8	13.5	11.8
		4.5 ft	9.5	10.3	9.5	8.7	9.9	8.7	9.3	10.4	9.3	8.6	9.9	8.6
		5.5 ft	6.0	6.4	6.0	5.6	6.2	5.6	6.4	7.0	6.4	6.0	6.7	6.0
		6.5 ft	3.9	4.1	3.9	3.7	4.0	3.7	4.4	4.7	4.4	4.2	4.6	4.2
		7.5 ft	2.6	2.7	2.6	2.5	2.7	2.5	3.1	3.2	3.1	2.9	3.2	2.9
		8.5 ft	1.9	1.9	1.9	1.8	1.9	1.8	2.2	2.3	2.2	2.1	2.3	2.1
		9.5 ft	1.3	1.4	1.3	1.3	1.4	1.3	1.6	1.7	1.6	1.6	1.7	1.6

Note: With **WD**, **WD-2**, or **WD-4** LED option, use 40° optic and 20° aiming angle for optimal performance. Data shown for 3000K CCT.

M2 LAMP MODULE w/ FS/FLS/FR/FLR TRIM - PERFORMANCE SUMMARY

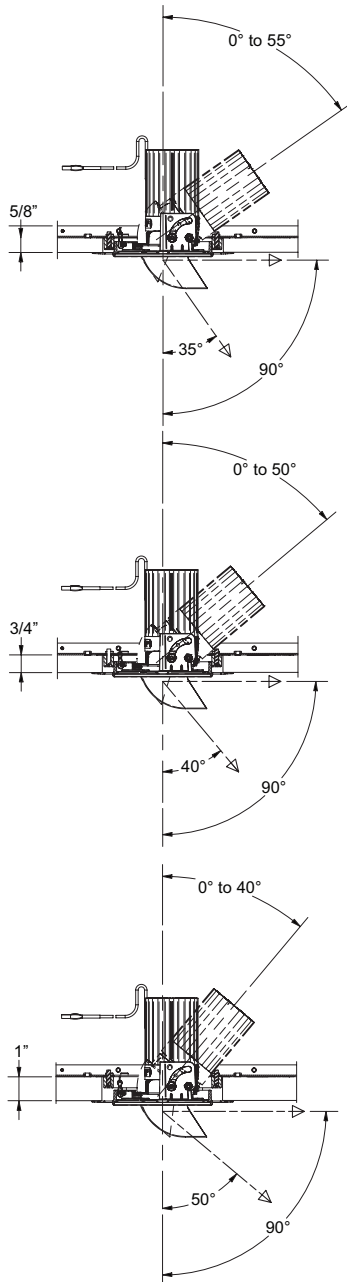
LED	OUTPUT	CCT	CRI	R9	Delivered Lumens	System Wattage	Delivered LPW
HI-27	1000	2700K	93	55	565-686	14	40-49
HI	1000	3000K	93	56	607-738	14	43-53
HI-2-27	1000	2700K	93	58	797	14.5	55
HI-2	1000	3000K	93	59	857	14.5	59
WD	350	3000-1800K	97	78	470-569	14.5	32-39
WD-2	350	2800-2200K	96	74	469-560	14.5	32-39
WD-4	350	3000-2200K	96	73	518-627	14.5	35-43

Performance summary for **HI** LED with 15°, 25°, and 40° optic options and **HI-2** LED with 10° optic option.
 Performance summary for **WD** and **WD-4** LED at 3000K and **WD-2** LED at 2800K with 15°, 25°, and 40° optic options.

M2 LAMP MODULE - VERTICAL AIMING RANGE

SEAMLESS SERIES

PLASTER/SHEETROCK CEILING APPLICATIONS



SEAMLESS SERIES

WOOD/STONE CEILING APPLICATIONS

