

## Photometric / Colorimetric / Electric Report

Fixture Model:

**805-W5-WD-40-PR1-8.5-350-FR-P-1-WH-WW-8**

Trim Model:

**FR-P-1-WH-WW-8**

Date:

**7/5/2023**



Light efficiency:

**38 Lumen/Watt**

Light quality:

**CRI: 97.2**

Color temperature:

**3098 K**

CIE 1931:

**x: 0.429  
y: 0.400**

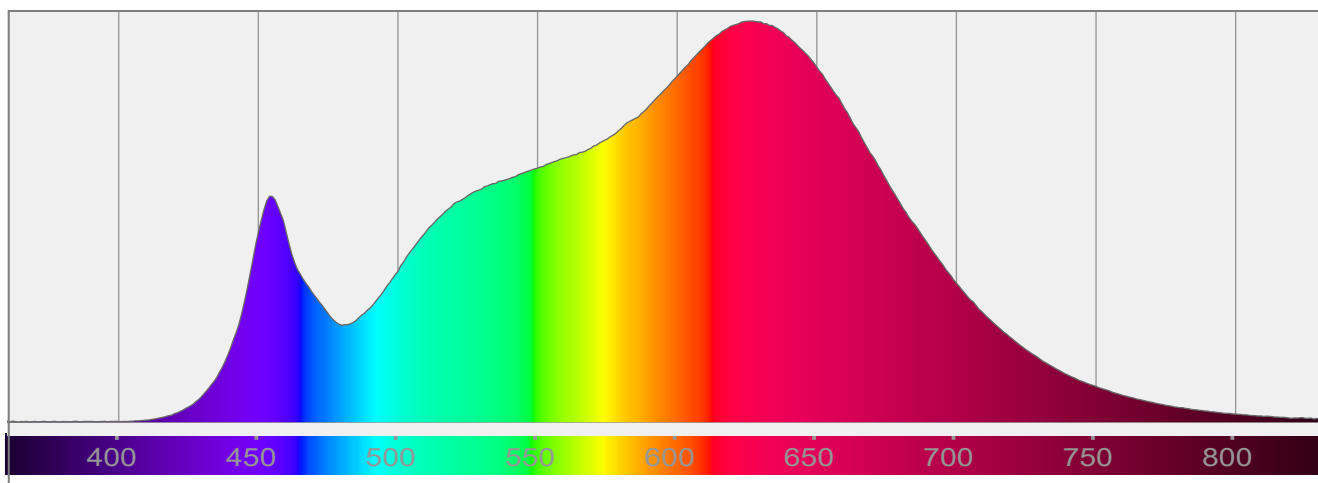
**Output: 551 lm**

**Peak: 394 cd**

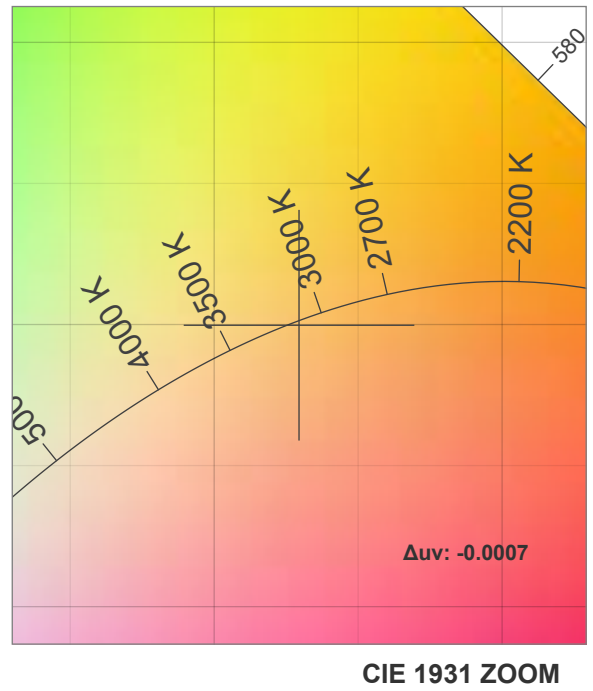
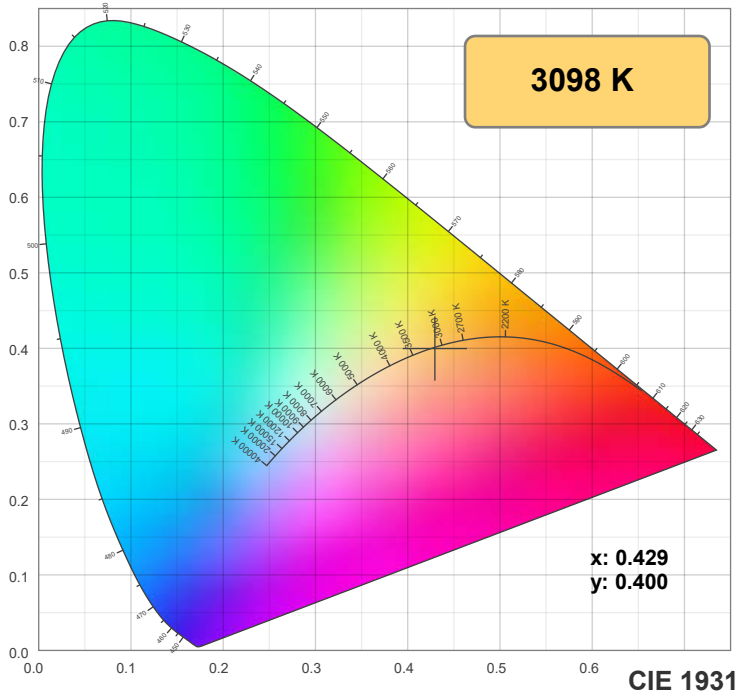
**Power: 14.6 W**

**PF: 0.99**

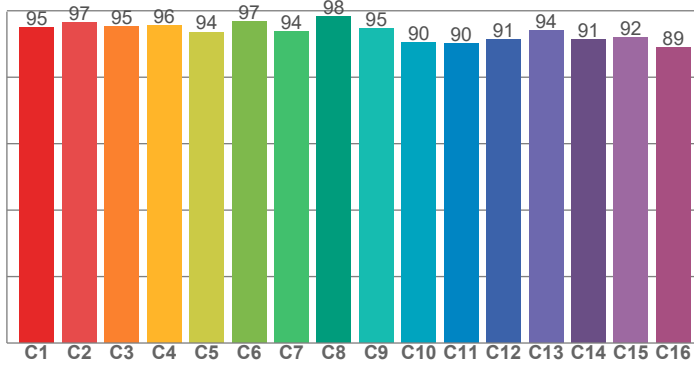
Spectra:



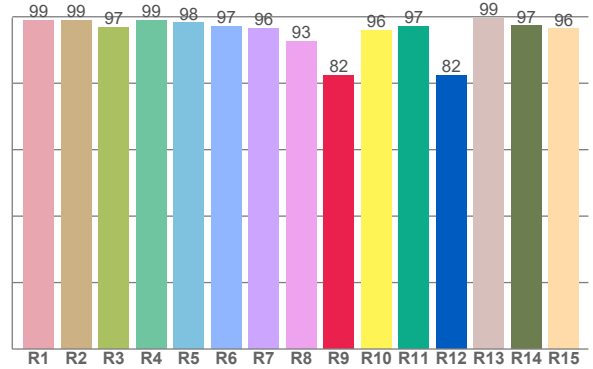
## Color Details



TM-30: 93.7



CRI: 97.2 (R1-R8)



CRI R Values:

R1	R2	R3	R4	R5	R6	R7	R8	R9	R10	R11	R12	R13	R14	R15
98.9	98.9	96.9	98.9	98.1	97.1	96.4	92.6	82.3	95.8	97.1	82.4	99.4	97.2	96.3

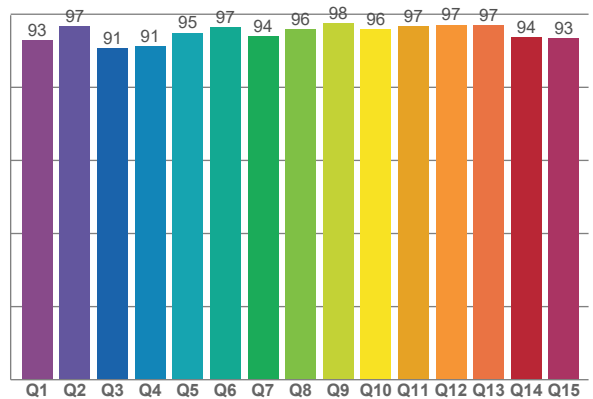
TM30 C Values:

C1	C2	C3	C4	C5	C6	C7	C8	C9	C10	C11	C12	C13	C14	C15	C16
94.9	96.5	95.3	95.6	93.6	96.7	93.9	98.4	94.5	90.4	90.1	91.4	94.1	91.3	91.9	88.8

CQS Q values:

Q1	Q2	Q3	Q4	Q5	Q6	Q7	Q8	Q9	Q10	Q11	Q12	Q13	Q14	Q15
92.8	96.7	90.6	91.3	94.9	96.5	93.9	95.8	97.5	96.0	96.7	97.1	97.1	93.7	93.4

CQS: 94.3



Color Parameters:

CCT	CRI	CRI R9	TM30 Rf	TM30 Rg	CQS	x	y	u	v	Δuv
3098 K	97.2	82.3	93.7	100.5	94.3	0.429	0.400	0.248	0.346	-0.0007

# TM-30 Details

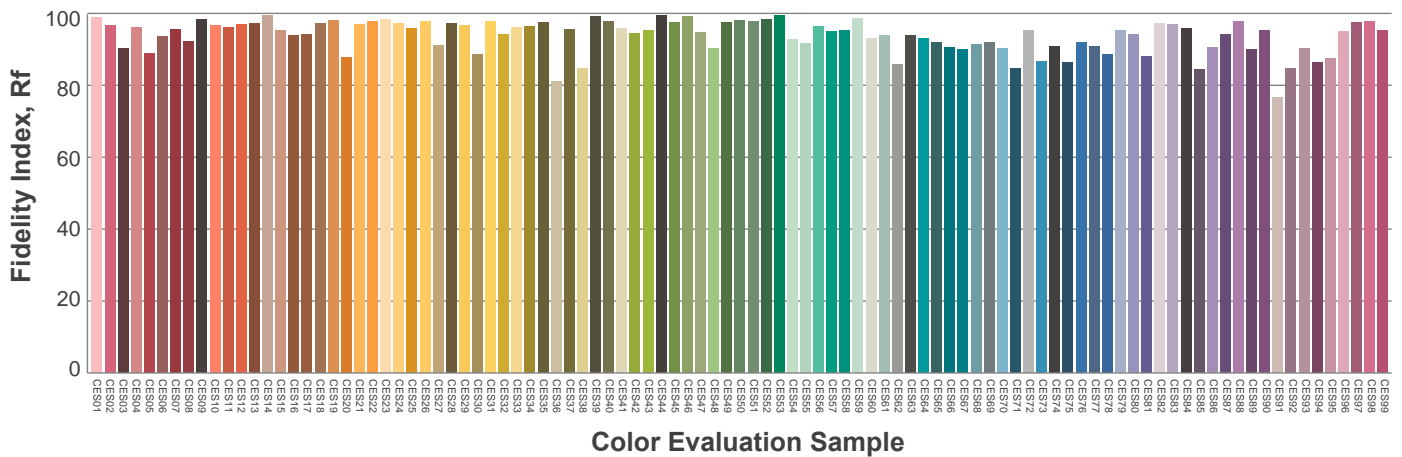
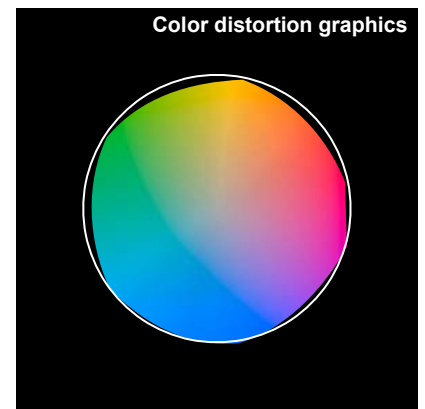
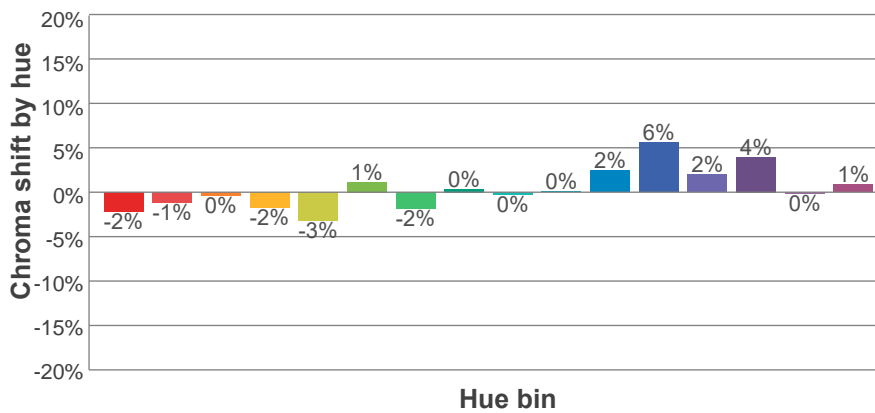
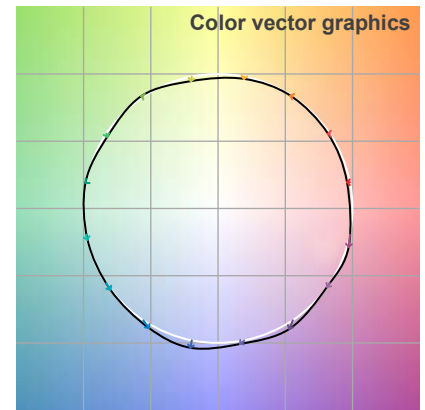
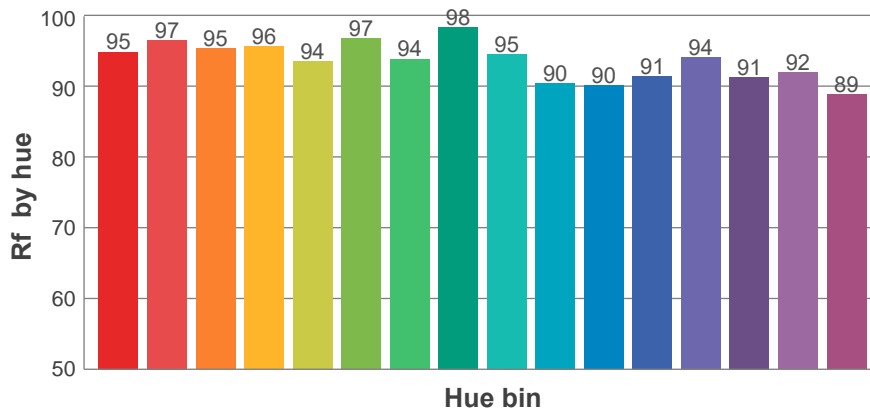
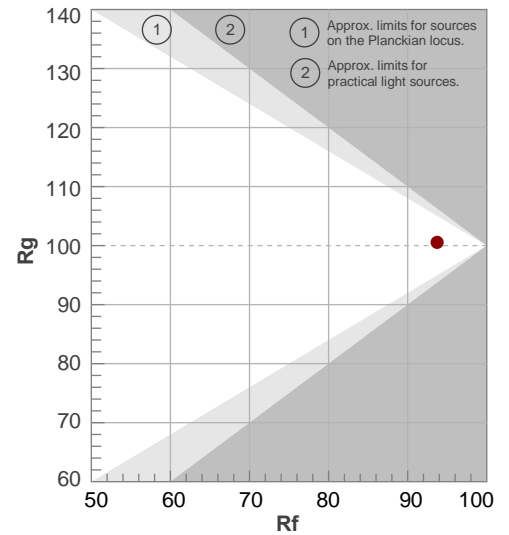
**Rf 93.7**

Fidelity index Rf

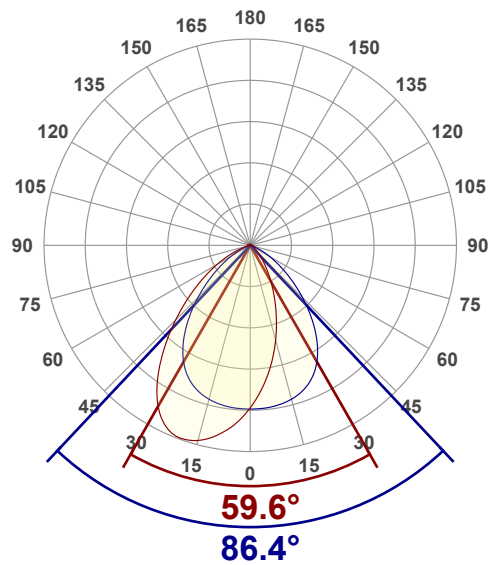
**Rg 100.5**

Gamut index Rg

Hue Bin	R <sub>f</sub>	Shifts (%)	
		Chroma	Hue
1	95	-2%	0%
2	97	-1%	1%
3	95	0%	2%
4	96	-2%	0%
5	94	-3%	1%
6	97	1%	1%
7	94	-2%	1%
8	98	0%	0%
9	95	0%	4%
10	90	0%	6%
11	90	2%	7%
12	91	6%	0%
13	94	2%	-4%
14	91	4%	-6%
15	92	0%	-3%
16	89	1%	-9%



## Angular Distribution Through 0° and 90° Planes



**Beam Angle: 86.4°W x 59.6°L**

## Beam Details

