

Photometric / Colorimetric / Electric Report

Fixture Model:
805-W5-WD-4-40-PR1-8.5-350-FR-P-1-WH-WW-8
Trim Model:
FR-P-1-WH-WW-8
Date:
8/5/2024



Light efficiency:
38 Lumen/Watt

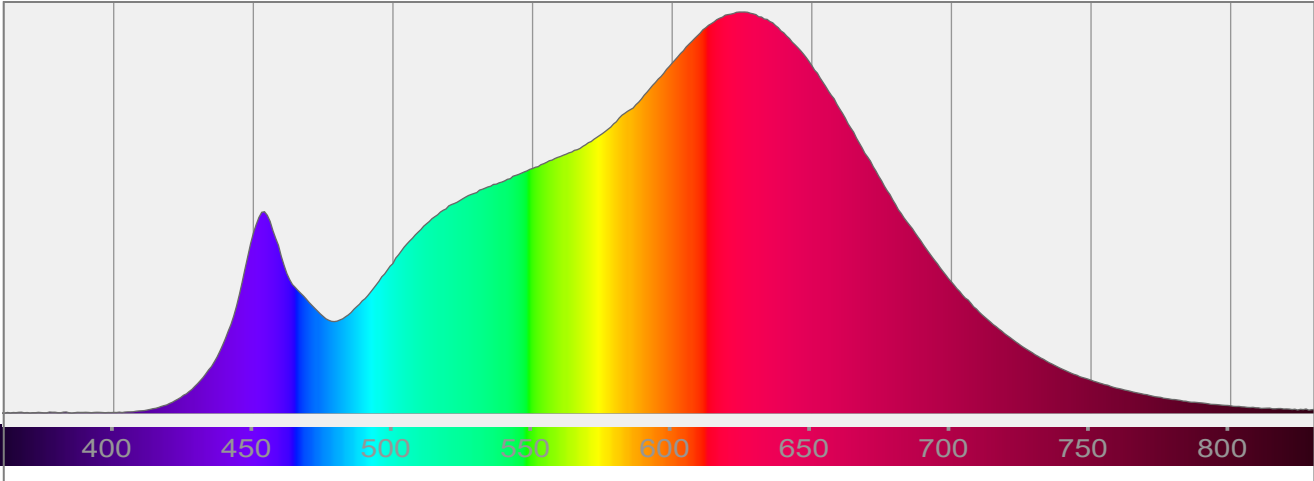
Light quality:
CRI: 96.7

Color temperature:
3001 K

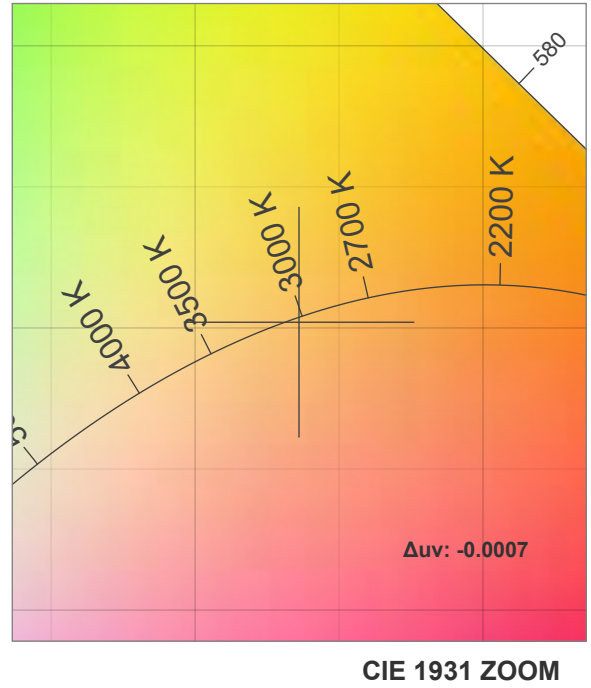
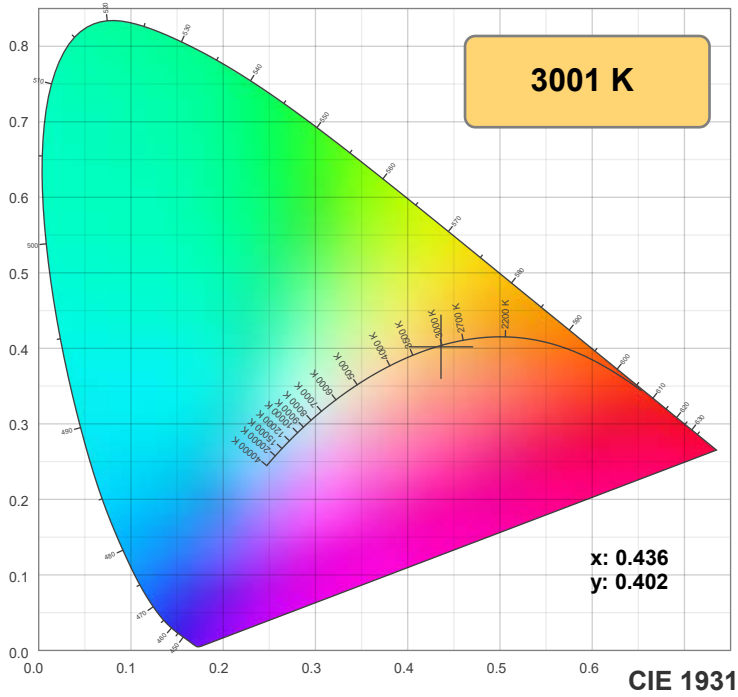
CIE 1931:
x: 0.436
y: 0.402

Output:	561 lm
Peak:	406 cd
Power:	14.6 W
PF:	0.99

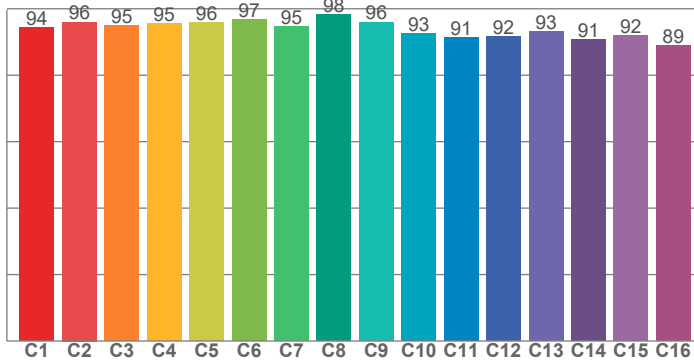
Spectra:



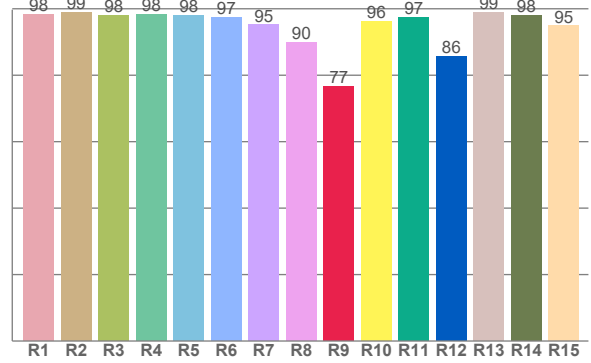
Color Details



TM-30: 94.1



CRI: 96.7 (R1-R8)



CRI R Values:

R1	R2	R3	R4	R5	R6	R7	R8	R9	R10	R11	R12	R13	R14	R15
98.3	98.9	98.0	98.4	98.0	97.3	95.1	89.9	76.7	96.3	97.3	85.6	98.9	97.9	94.8

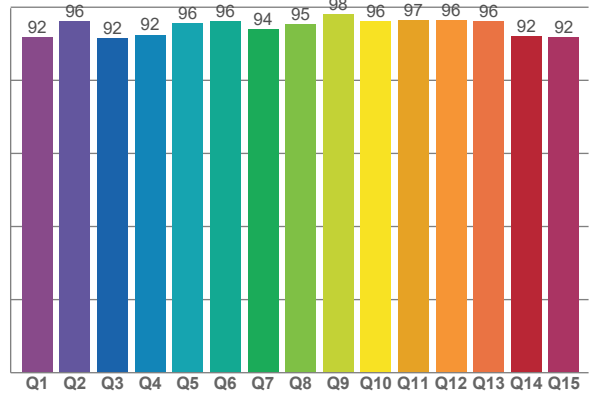
TM30 C Values:

C1	C2	C3	C4	C5	C6	C7	C8	C9	C10	C11	C12	C13	C14	C15	C16
94.4	96.0	94.9	95.5	95.7	96.6	94.7	98.3	96.0	92.6	91.4	91.6	93.2	90.6	91.8	88.9

CQS Q values:

Q1	Q2	Q3	Q4	Q5	Q6	Q7	Q8	Q9	Q10	Q11	Q12	Q13	Q14	Q15
91.8	96.3	91.5	92.5	95.7	96.0	93.9	95.4	98.1	96.0	96.5	96.5	96.1	92.0	91.9

CQS: 94.1



Color Parameters:

CCT	CRI	CRI R9	TM30 Rf	TM30 Rg	CQS	x	y	u	v	Δuv
3001 K	96.7	76.7	94.1	100.4	94.1	0.436	0.402	0.251	0.347	-0.0007

TM-30 Details

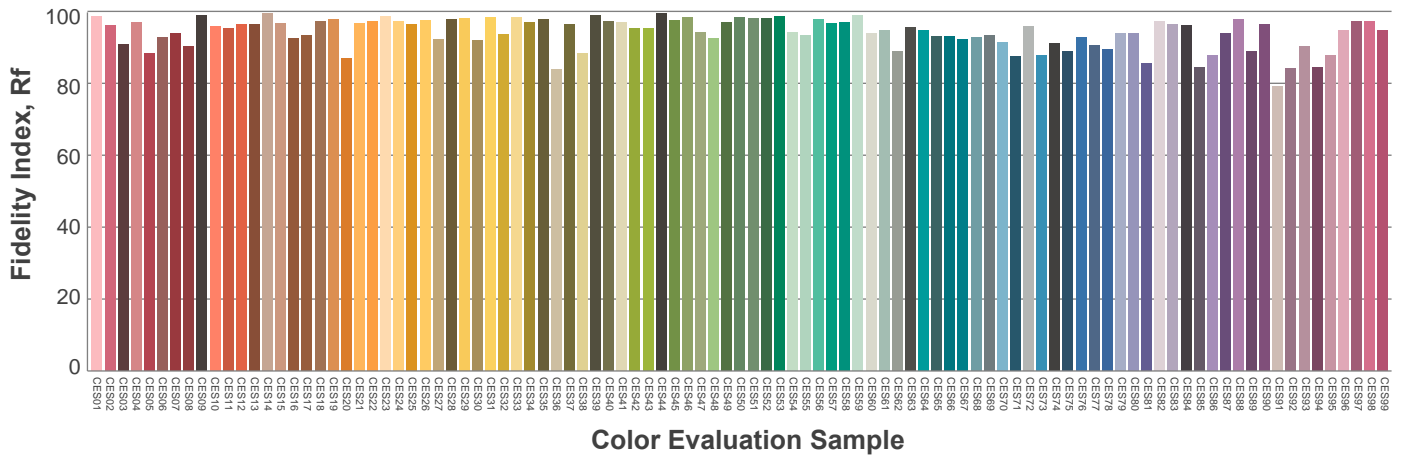
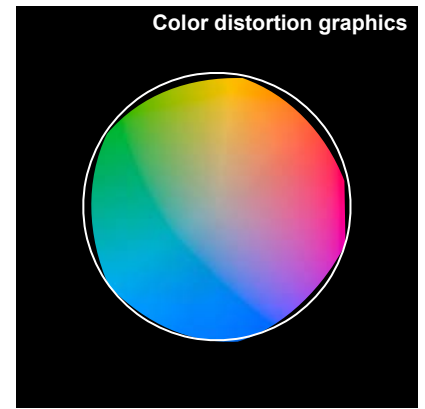
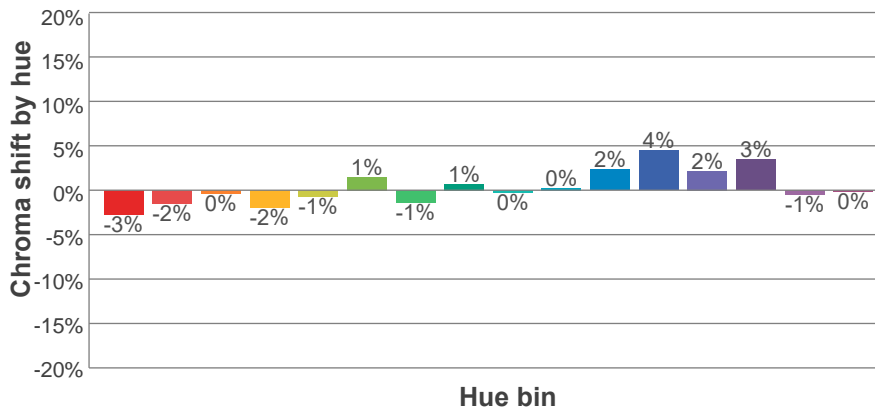
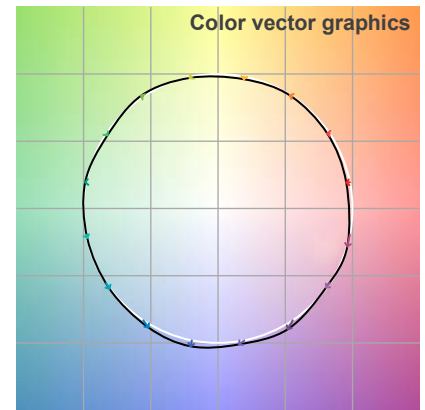
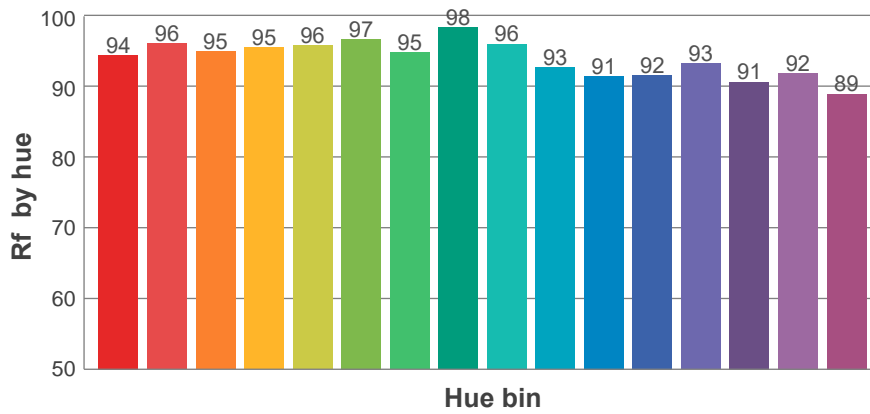
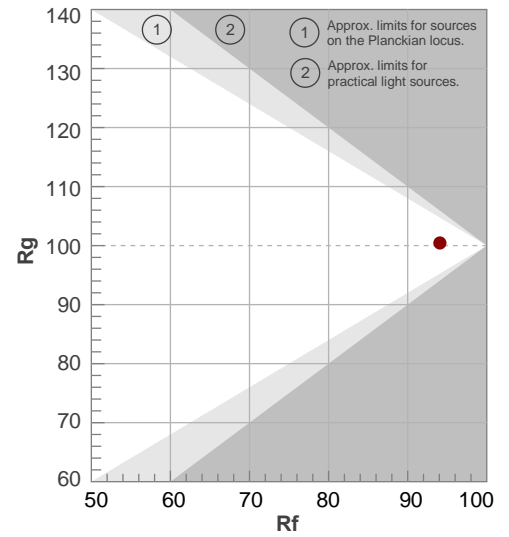
Rf 94.1

Fidelity index Rf

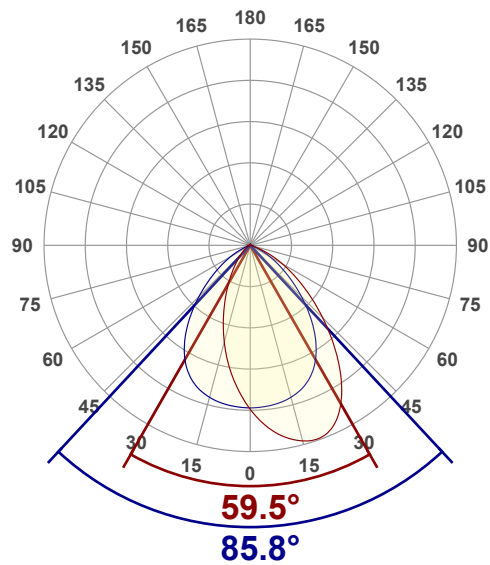
Rg 100.4

Gamut index Rg

Hue Bin	R _f	Shifts (%)	
		Chroma	Hue
1	94	-3%	0%
2	96	-2%	1%
3	95	0%	2%
4	95	-2%	0%
5	96	-1%	2%
6	97	1%	1%
7	95	-1%	0%
8	98	1%	0%
9	96	0%	2%
10	93	0%	5%
11	91	2%	6%
12	92	4%	0%
13	93	2%	-5%
14	91	3%	-7%
15	92	-1%	-4%
16	89	0%	-9%



Angular Distribution Through 0° and 90° Planes



Beam Angle: 85.8°W x 59.5°L

Beam Details

