

Photometric / Colorimetric / Electric Report

Fixture Model:

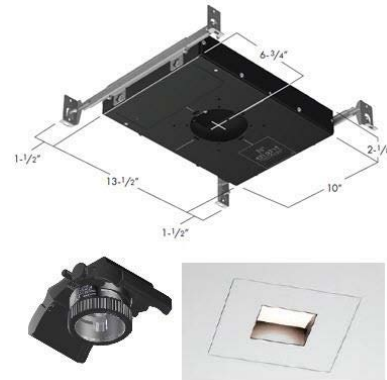
805-W5-HI-3-10-FL-PR1-8.5-350-FS-P-1-WH-WW-8-20d

Trim Model:

FS-P-1-WH-WW-8

Date:

1/17/2025



Light efficiency:

32 Lumen/Watt

Light quality:

CRI: 94.6

Color temperature:

3050 K

CIE 1931:

**x: 0.431
y: 0.397**

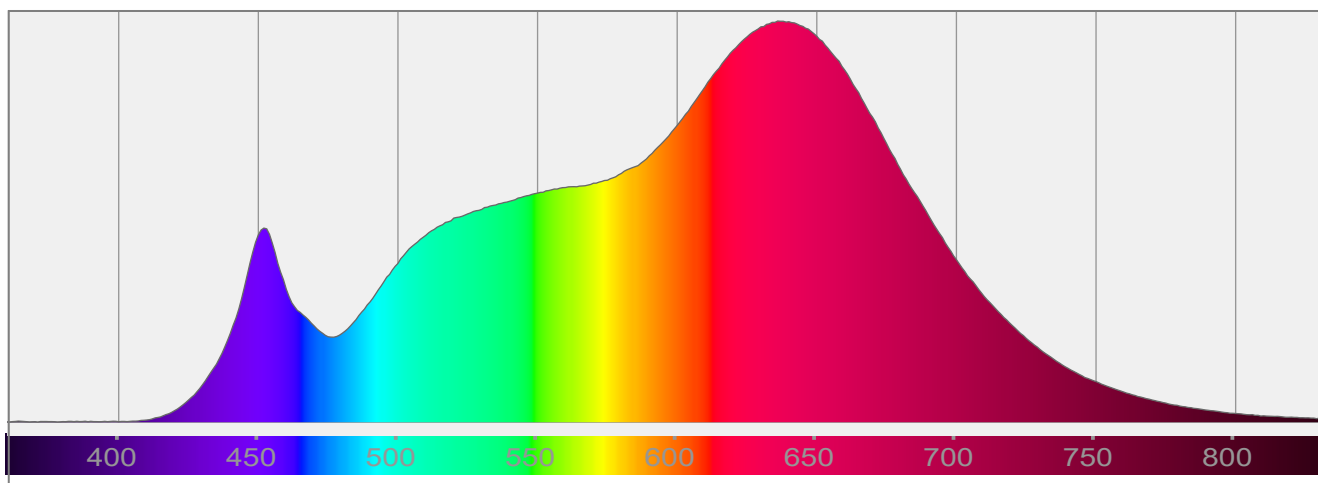
Output: 476 lm

Peak: 325 cd

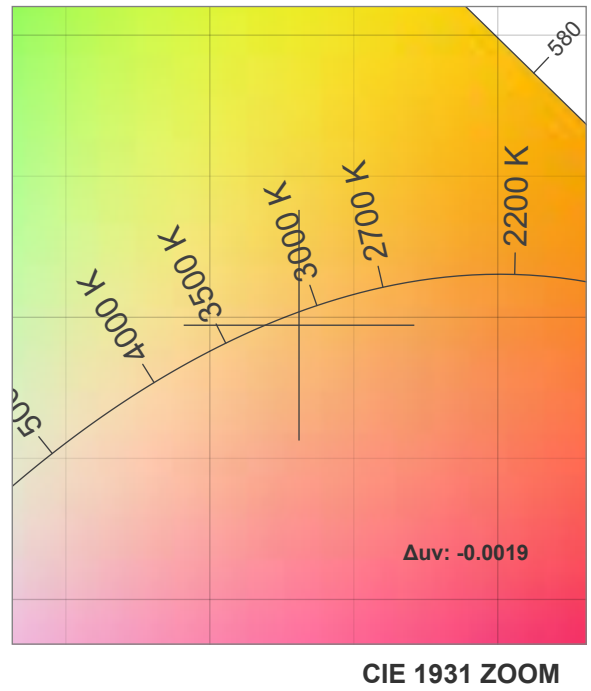
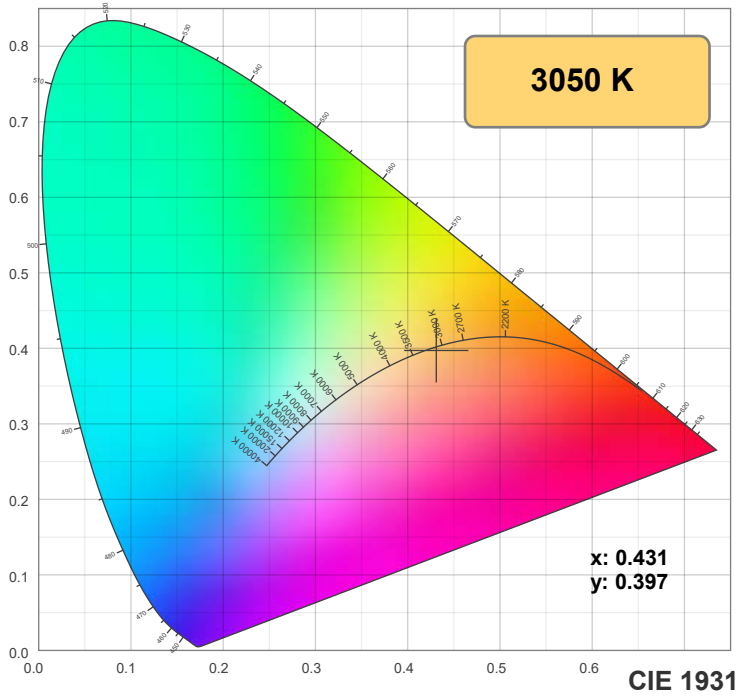
Power: 14.9 W

PF: 0.99

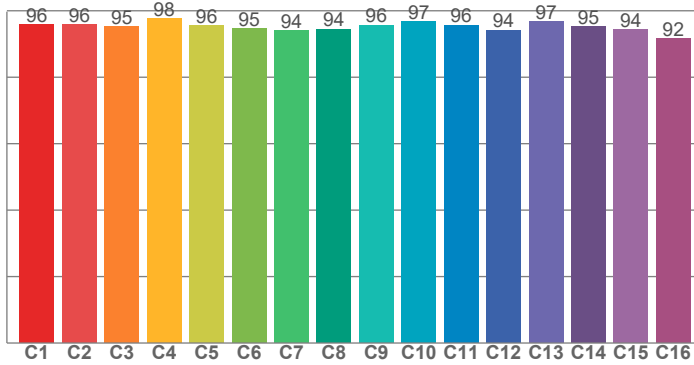
Spectra:



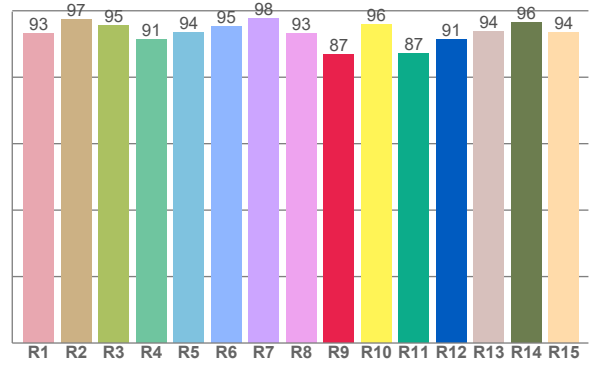
Color Details



TM-30: 95.4



CRI: 94.6 (R1-R8)



CRI R Values:

R1	R2	R3	R4	R5	R6	R7	R8	R9	R10	R11	R12	R13	R14	R15
93.2	97.5	95.5	91.4	93.5	95.2	97.6	93.2	86.7	95.9	87.2	91.4	93.9	96.4	93.6

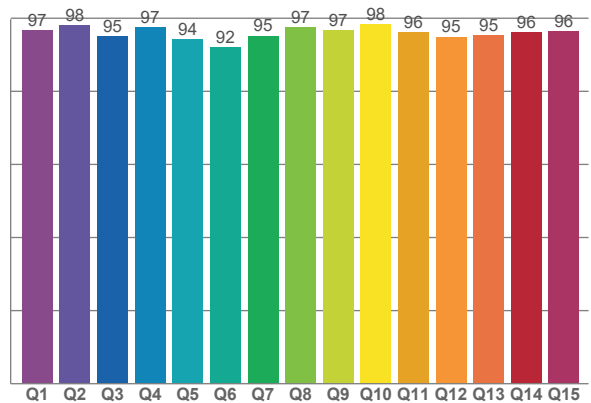
TM30 C Values:

C1	C2	C3	C4	C5	C6	C7	C8	C9	C10	C11	C12	C13	C14	C15	C16
95.8	95.9	95.3	97.7	95.6	94.7	94.0	94.5	95.7	96.7	95.7	94.2	96.8	95.2	94.3	91.6

CQS Q values:

Q1	Q2	Q3	Q4	Q5	Q6	Q7	Q8	Q9	Q10	Q11	Q12	Q13	Q14	Q15
96.8	98.0	95.0	97.4	94.2	92.2	95.2	97.5	96.7	98.3	96.1	94.9	95.3	96.1	96.3

CQS: 95.5



Color Parameters:

CCT	CRI	CRI R9	TM30 Rf	TM30 Rg	CQS	x	y	u	v	Δuv
3050 K	94.6	86.7	95.4	103.9	95.5	0.431	0.397	0.250	0.345	-0.0019

TM-30 Details

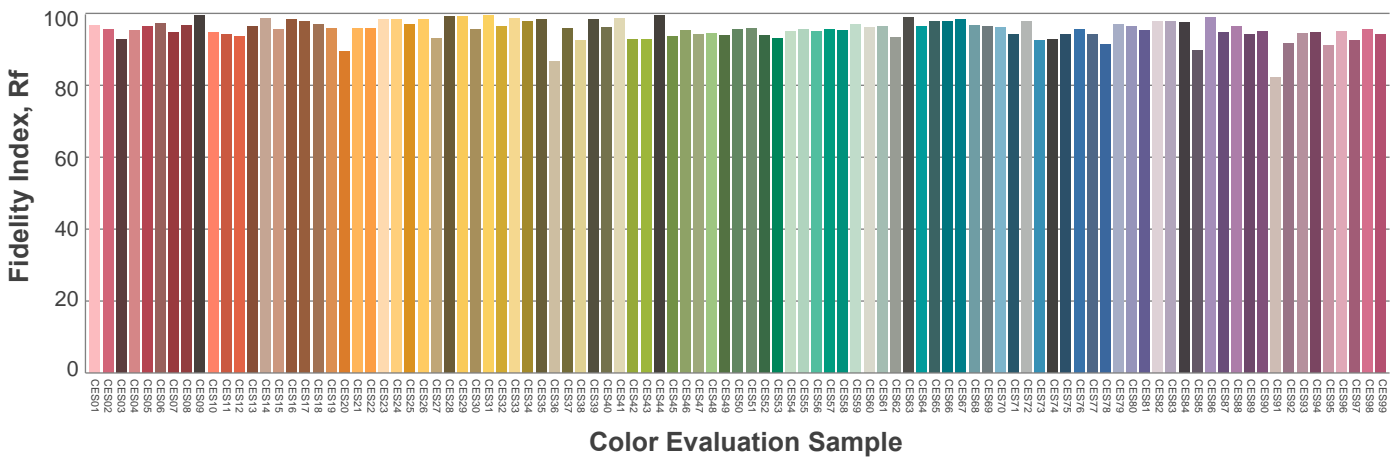
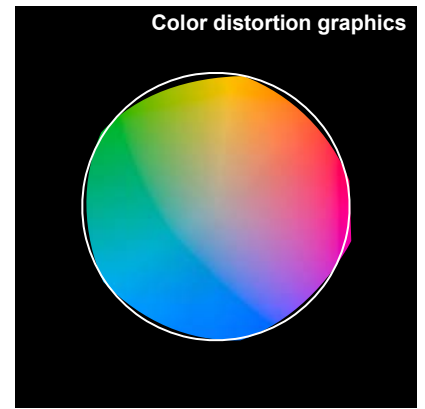
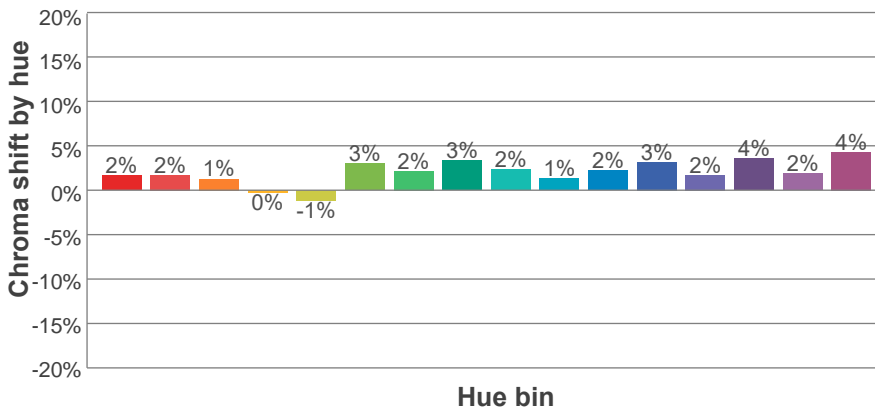
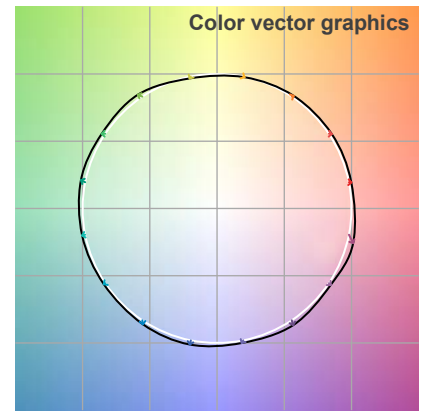
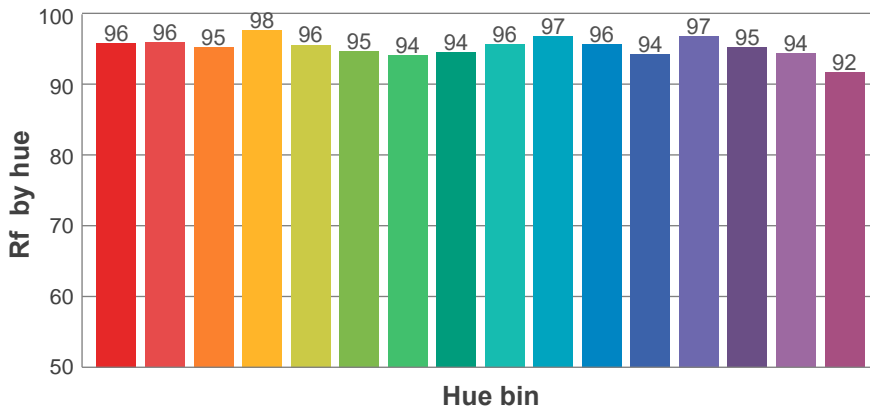
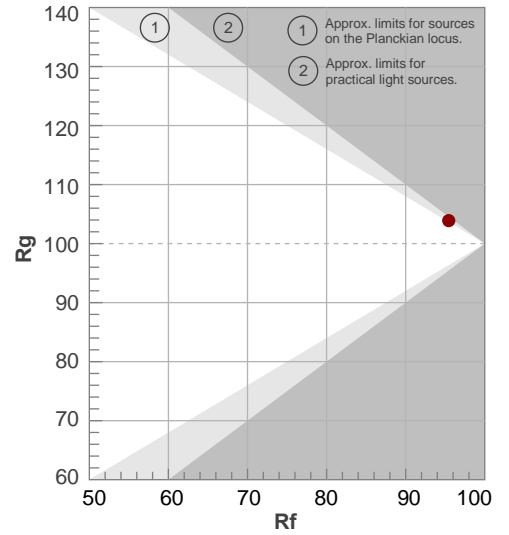
Rf 95.4

Fidelity index R_f

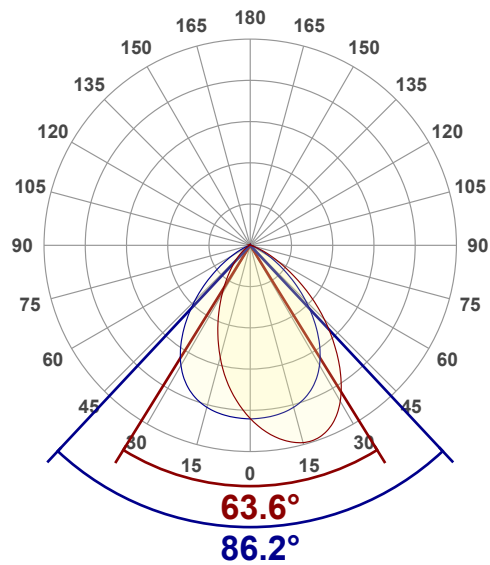
Rg 103.9

Gamut index Rg

		Shifts (%)	
Hue Bin	R_T	Chroma	Hue
1	96	2%	0%
2	96	2%	-1%
3	95	1%	-1%
4	98	0%	-1%
5	96	-1%	1%
6	95	3%	2%
7	94	2%	2%
8	94	3%	-1%
9	96	2%	0%
10	97	1%	0%
11	96	2%	2%
12	94	3%	0%
13	97	2%	-2%
14	95	4%	-1%
15	94	2%	0%
16	92	4%	-6%



Angular Distribution Through 0° and 90° Planes



Beam Angle: 86.2°W x 63.6°L

Beam Details

