

## Photometric / Colorimetric / Electric Report

Fixture Model:

**MPT2-S-WD-2-6-WH-40-DIM1-M-350**

Trim Model:

Date:

**3/31/2022**



Light efficiency:

**61 Lumen/Watt**

Light quality:

**CRI: 96.9**

Color temperature:

**2884 K**

CIE 1931:

**x: 0.443  
y: 0.402**

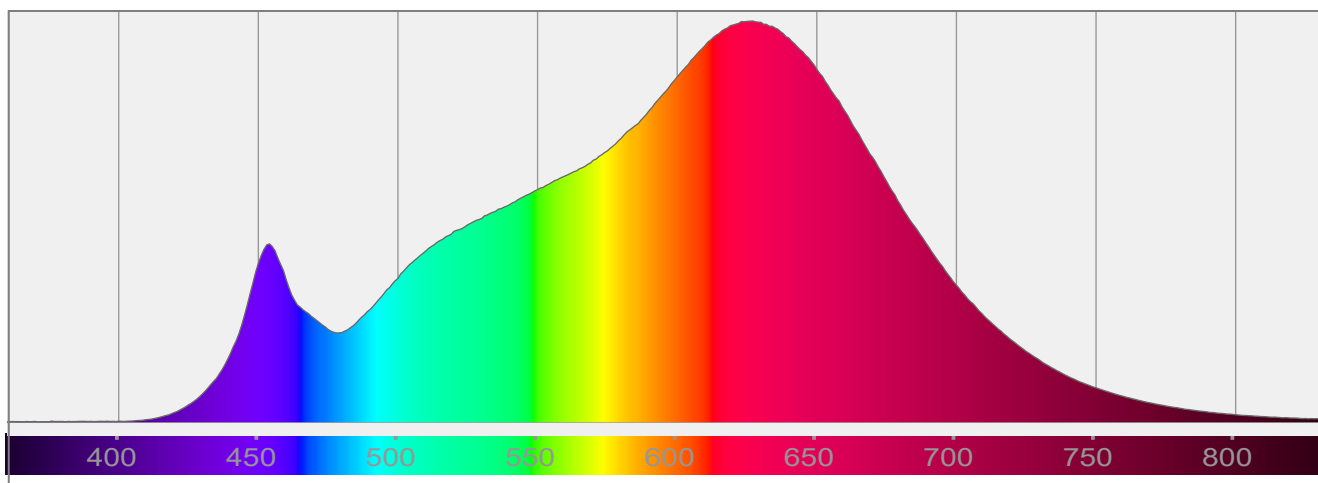
**Output: 882 lm**

**Peak: 1812 cd**

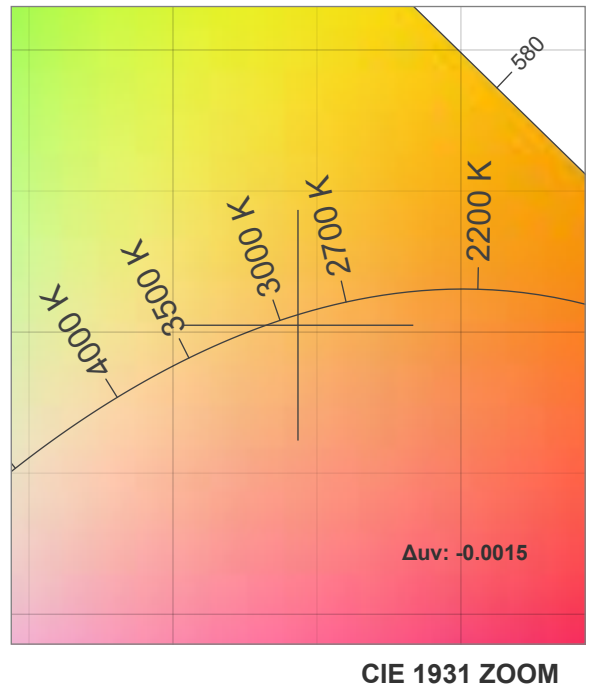
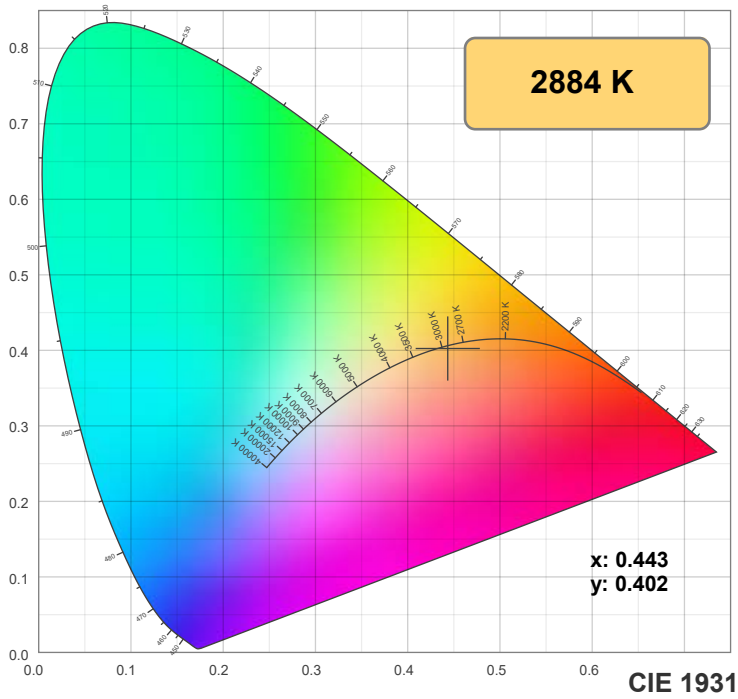
**Power: 14.6 W**

**PF: 0.99**

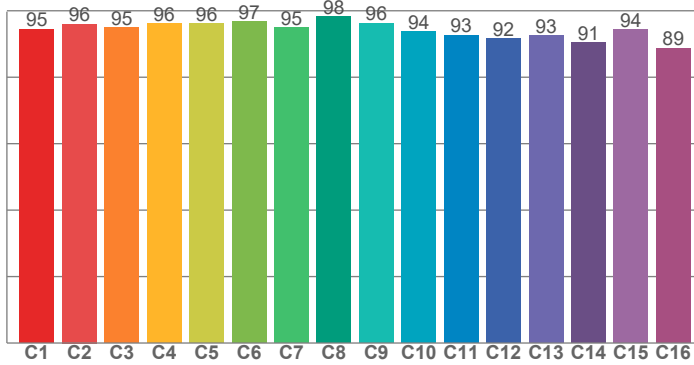
Spectra:



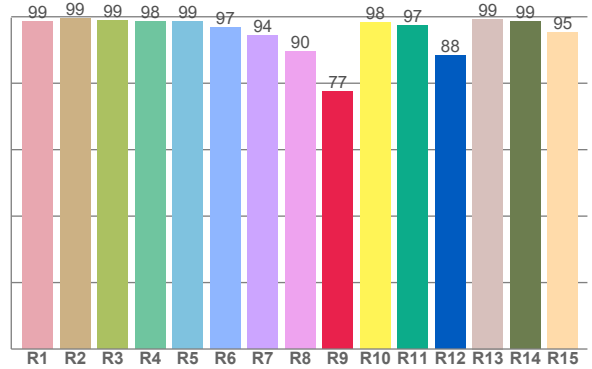
## Color Details



**TM-30: 94.4**



**CRI: 96.9 (R1-R8)**



**CRI R Values:**

R1	R2	R3	R4	R5	R6	R7	R8	R9	R10	R11	R12	R13	R14	R15
98.6	99.4	99.0	98.5	98.6	96.7	94.4	89.6	77.4	98.2	97.4	88.3	99.3	98.6	95.3

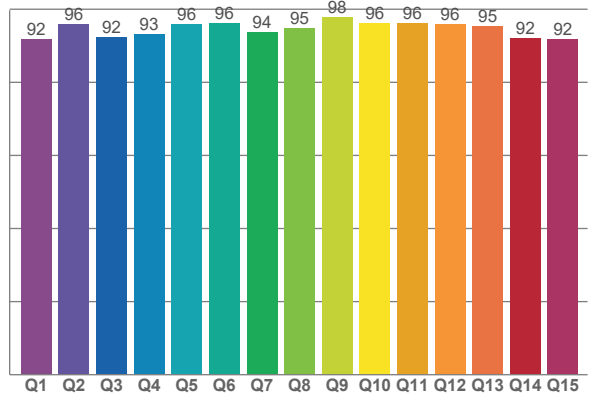
**TM30 C Values:**

C1	C2	C3	C4	C5	C6	C7	C8	C9	C10	C11	C12	C13	C14	C15	C16
94.5	96.0	95.0	96.1	96.2	96.7	95.1	98.3	96.3	93.6	92.7	91.7	92.6	90.6	94.3	88.8

**CQS Q values:**

Q1	Q2	Q3	Q4	Q5	Q6	Q7	Q8	Q9	Q10	Q11	Q12	Q13	Q14	Q15
91.8	95.8	92.4	93.1	96.0	96.2	93.8	94.8	97.7	96.2	96.2	95.8	95.3	92.0	91.8

**CQS: 94.1**



**Color Parameters:**

CCT	CRI	CRI R9	TM30 Rf	TM30 Rg	CQS	x	y	u	v	Δuv
2884 K	96.9	77.4	94.4	100.4	94.1	0.443	0.402	0.255	0.348	-0.0015

# TM-30 Details

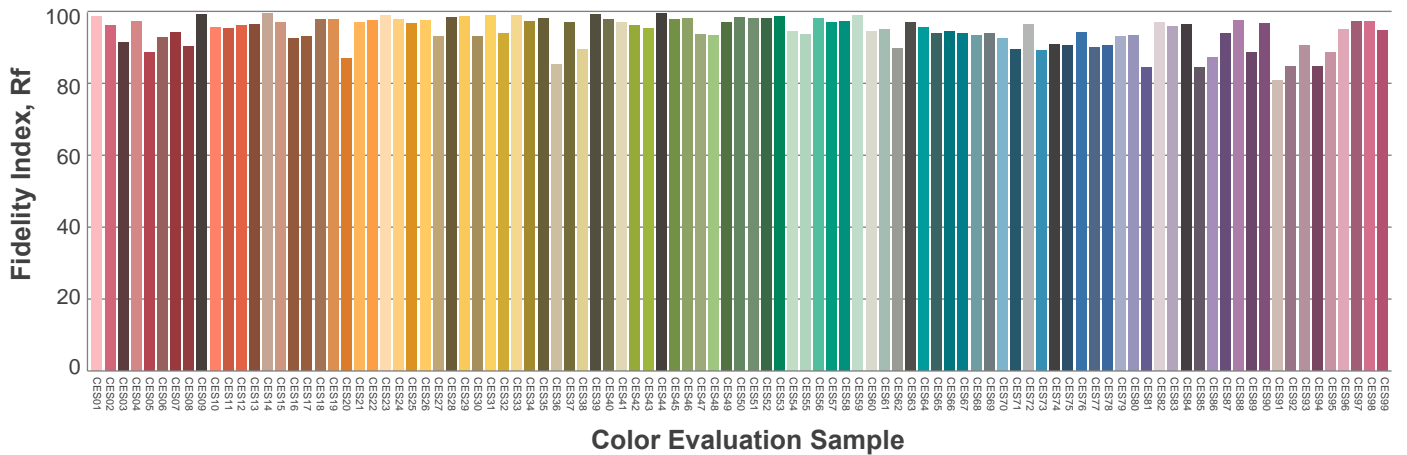
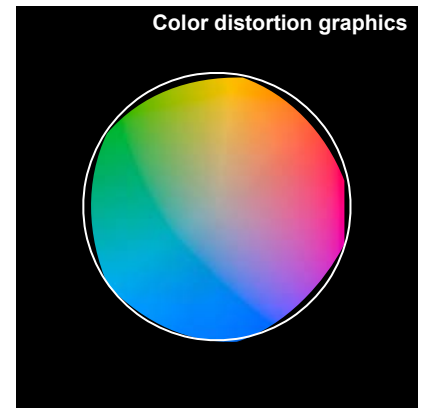
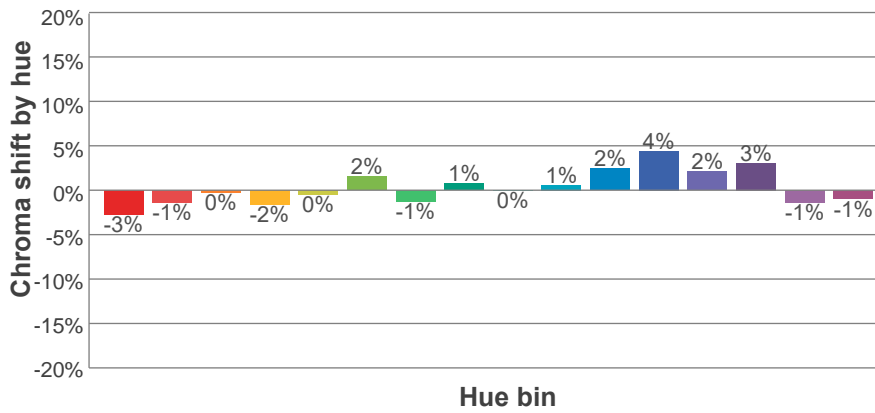
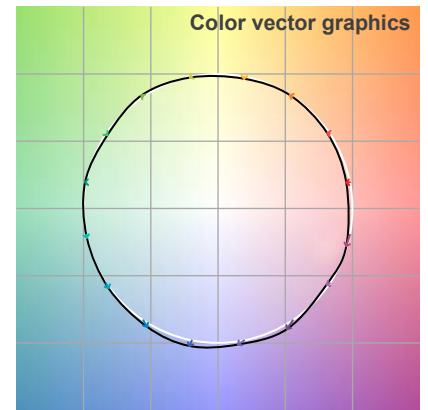
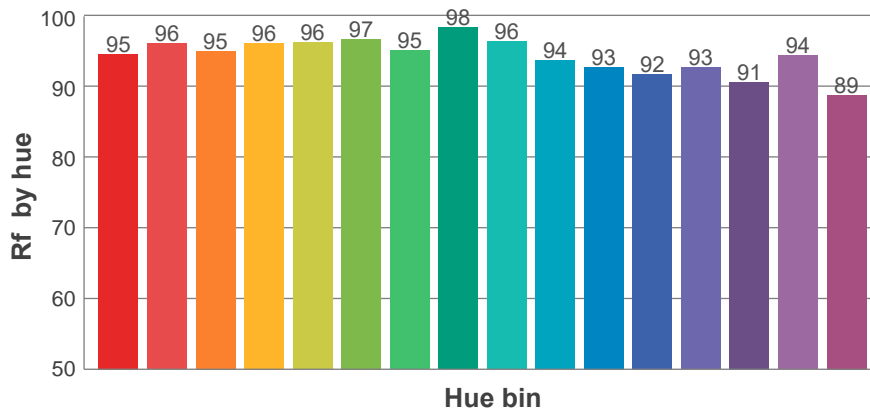
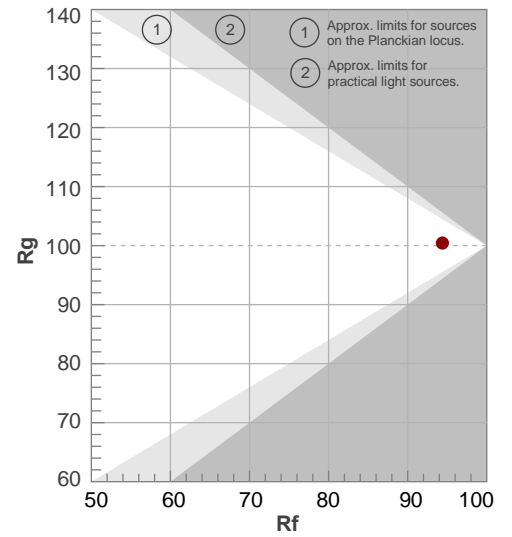
**Rf 94.4**

Fidelity index Rf

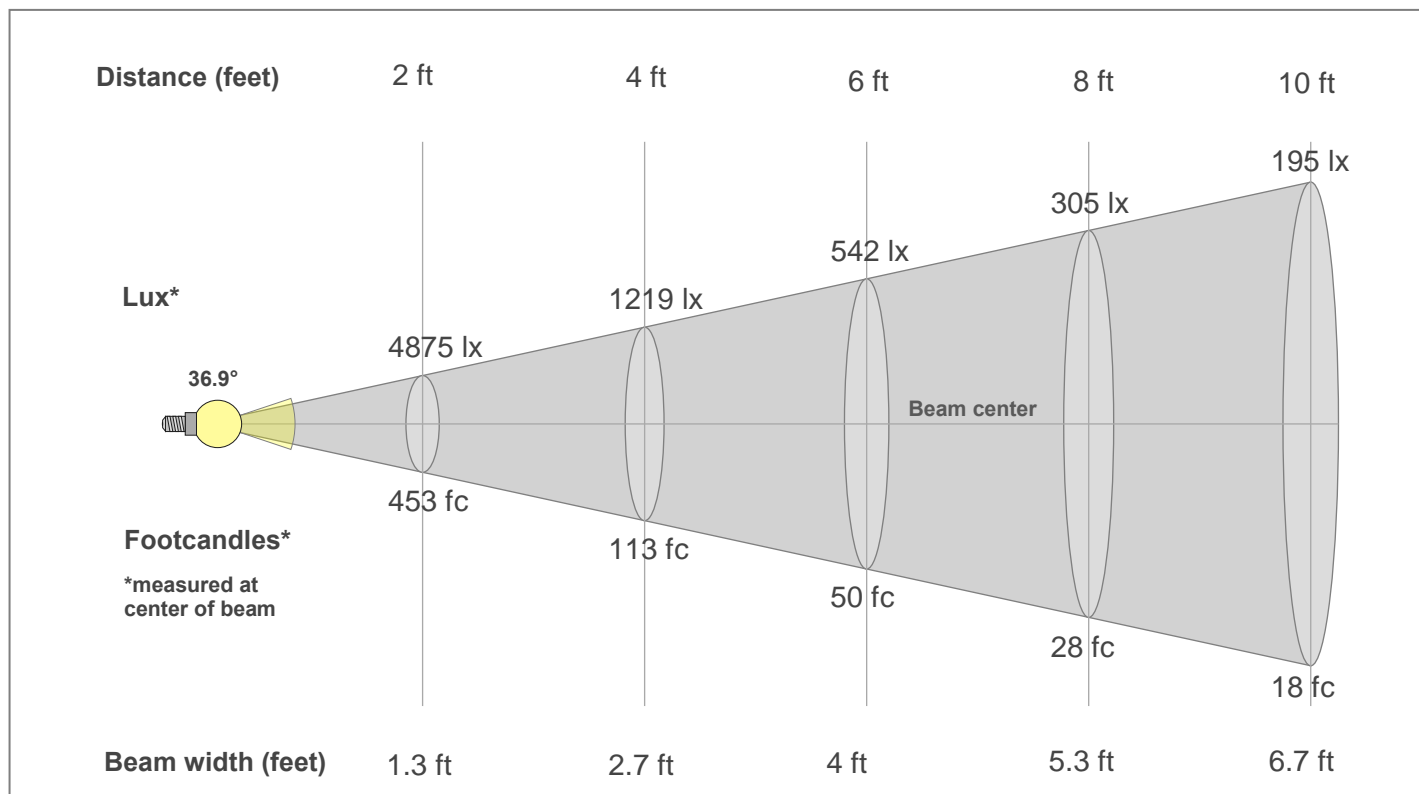
**Rg 100.4**

Gamut index Rg

Hue Bin	R <sub>f</sub>	Shifts (%)	
		Chroma	Hue
1	95	-3%	0%
2	96	-1%	1%
3	95	0%	2%
4	96	-2%	0%
5	96	0%	1%
6	97	2%	1%
7	95	-1%	0%
8	98	1%	0%
9	96	0%	2%
10	94	1%	4%
11	93	2%	5%
12	92	4%	-1%
13	93	2%	-5%
14	91	3%	-7%
15	94	-1%	-2%
16	89	-1%	-9%



## Beam Details



### Beam Intensities from 1-20m

1m	2m	3m	4m	5m	6m	7m	8m	9m	10m	11m	12m	13m	14m	15m	16m	17m	18m	19m	20m
3.3ft	6.6ft	9.8ft	13.1ft	16.4ft	19.7ft	23ft	26.2ft	29.5ft	32.8ft	36.1ft	39.4ft	42.7ft	45.9ft	49.2ft	52.5ft	55.8ft	59.1ft	62.3ft	65.6ft
1812lx	453lx	201lx	113lx	72lx	50lx	37lx	28lx	22lx	18lx	15lx	13lx	11lx	9lx	8lx	7lx	6lx	6lx	5lx	5lx
168.3fc	42.1fc	18.7fc	10.5fc	6.7fc	4.7fc	3.4fc	2.6fc	2.1fc	1.7fc	1.4fc	1.2fc	1fc	0.9fc	0.7fc	0.7fc	0.6fc	0.5fc	0.5fc	0.4fc

### Intensities in 0° c-plane

0°	2°	4°	6°	8°	10°	12°	14°	16°	18°	20°	22°	24°	26°	28°	30°	32°	34°	36°	38°
1812	1797	1755	1684	1593	1480	1355	1221	1080	938	801	674	562	463	381	312	252	203	162	128
100%	99%	97%	93%	88%	82%	75%	67%	60%	52%	44%	37%	31%	26%	21%	17%	14%	11%	9%	7%

### Intensities in 90° c-plane

0°	2°	4°	6°	8°	10°	12°	14°	16°	18°	20°	22°	24°	26°	28°	30°	32°	34°	36°	38°
1812	1796	1754	1685	1593	1481	1357	1222	1081	938	802	675	561	462	381	312	253	204	163	129
100%	99%	97%	93%	88%	82%	75%	67%	60%	52%	44%	37%	31%	26%	21%	17%	14%	11%	9%	7%

### Intensities in 180° c-plane

0°	2°	4°	6°	8°	10°	12°	14°	16°	18°	20°	22°	24°	26°	28°	30°	32°	34°	36°	38°
1812	1797	1755	1684	1593	1480	1355	1221	1080	938	801	674	562	463	381	312	252	203	162	128
100%	99%	97%	93%	88%	82%	75%	67%	60%	52%	44%	37%	31%	26%	21%	17%	14%	11%	9%	7%

### Intensities in 270° c-plane

0°	2°	4°	6°	8°	10°	12°	14°	16°	18°	20°	22°	24°	26°	28°	30°	32°	34°	36°	38°
1812	1796	1754	1685	1593	1481	1357	1222	1081	938	802	675	561	462	381	312	253	204	163	129
100%	99%	97%	93%	88%	82%	75%	67%	60%	52%	44%	37%	31%	26%	21%	17%	14%	11%	9%	7%

Beam angle 50%	Field angle 10%	Cut-off angle 2.5%	Intensity ratio in 120°	Intensity ratio in 90°
36.9°	70.1°	91.6°	99.3%	96.5%