

Photometric / Colorimetric / Electric Report

Fixture Model:

805-K5-WD-40-PR1-8.5-350-FS-P-1-WH

Trim Model:

FS-P-1-WH

Date:

7/3/2023



Light efficiency:

60 Lumen/Watt

Light quality:

CRI: 97.1

Color temperature:

3102 K

CIE 1931:

**x: 0.429
y: 0.400**

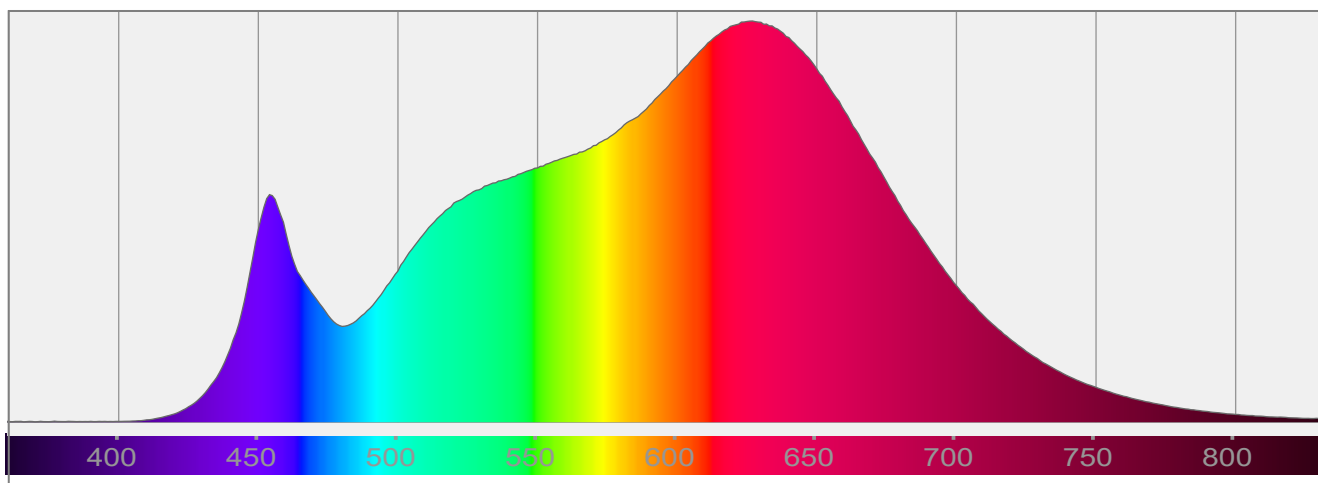
Output: 882 lm

Peak: 1837 cd

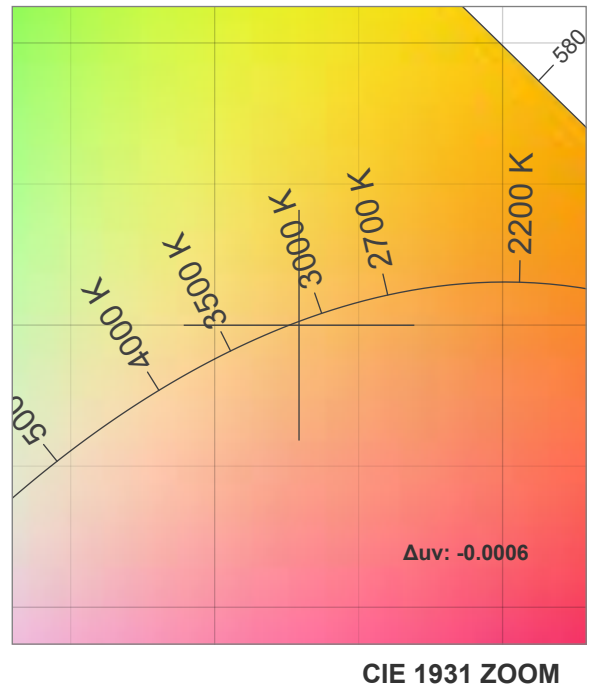
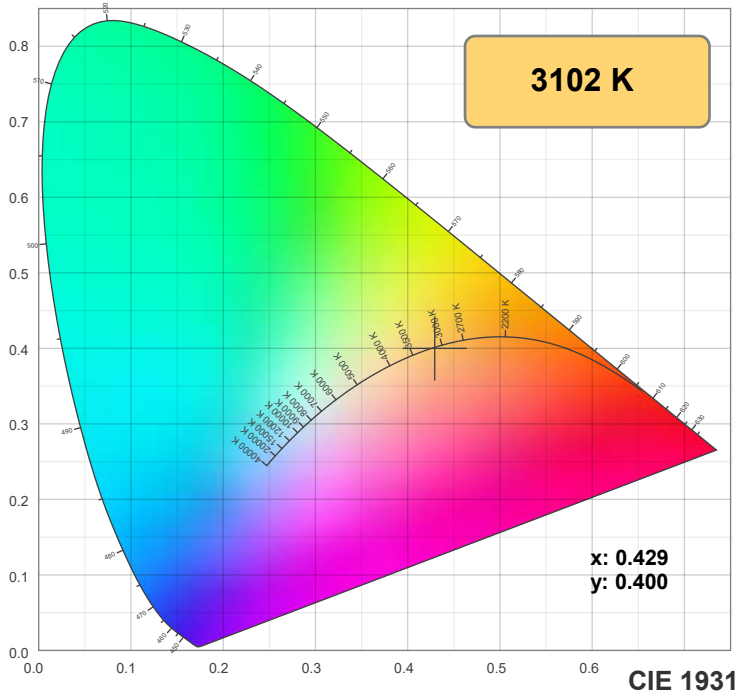
Power: 14.6 W

PF: 0.99

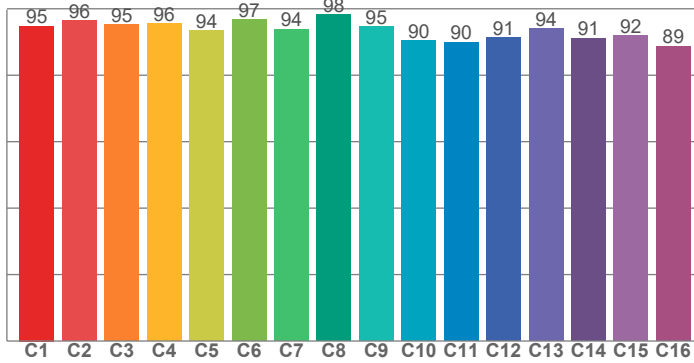
Spectra:



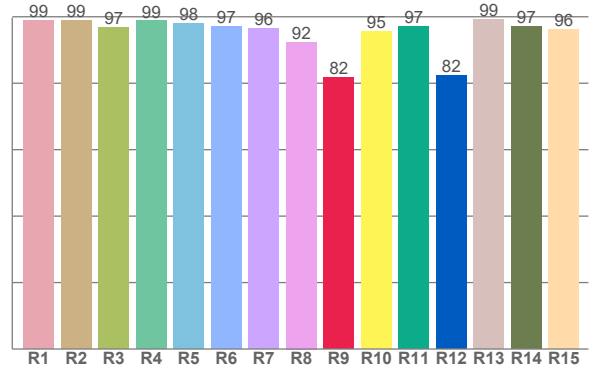
Color Details



TM-30: 93.7



CRI: 97.1 (R1-R8)



CRI R Values:

R1	R2	R3	R4	R5	R6	R7	R8	R9	R10	R11	R12	R13	R14	R15
98.8	98.8	96.8	98.7	98.0	97.1	96.4	92.4	81.7	95.5	97.1	82.2	99.3	97.2	96.1

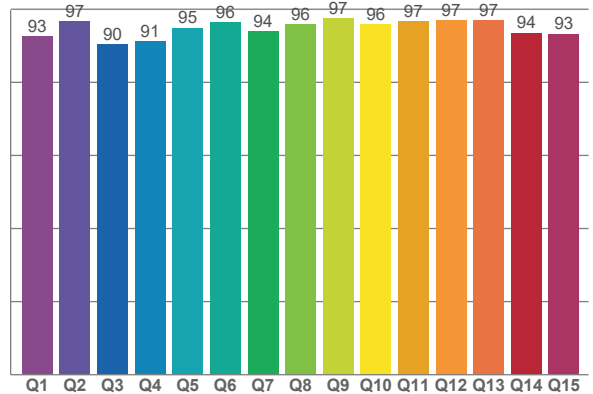
TM30 C Values:

C1	C2	C3	C4	C5	C6	C7	C8	C9	C10	C11	C12	C13	C14	C15	C16
94.8	96.5	95.2	95.7	93.6	96.7	93.9	98.4	94.6	90.5	90.0	91.4	94.1	91.2	91.9	88.8

CQS Q values:

Q1	Q2	Q3	Q4	Q5	Q6	Q7	Q8	Q9	Q10	Q11	Q12	Q13	Q14	Q15
92.7	96.7	90.5	91.3	94.9	96.4	93.9	95.8	97.5	95.9	96.7	97.1	97.1	93.6	93.3

CQS: 94.3



Color Parameters:

CCT	CRI	CRI R9	TM30 Rf	TM30 Rg	CQS	x	y	u	v	Δuv
3102 K	97.1	81.7	93.7	100.6	94.3	0.429	0.400	0.247	0.346	-0.0006

TM-30 Details

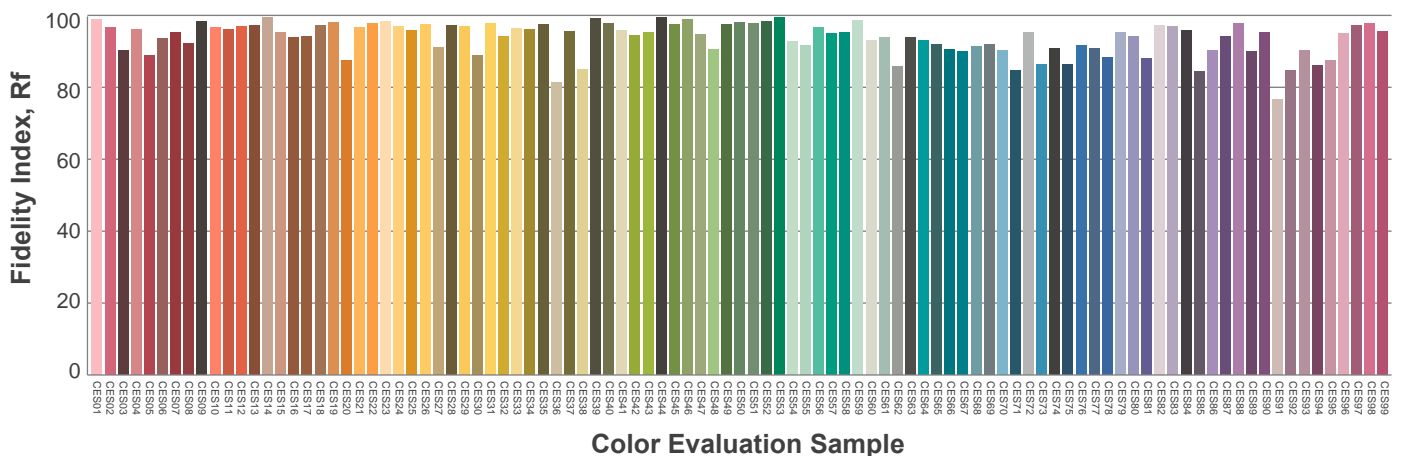
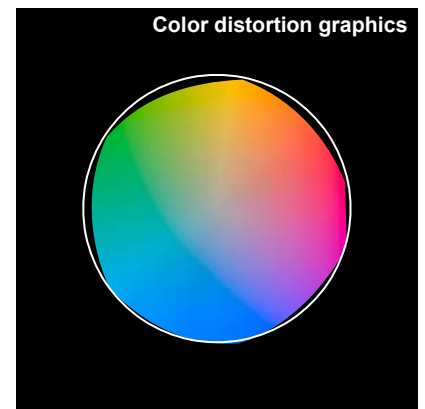
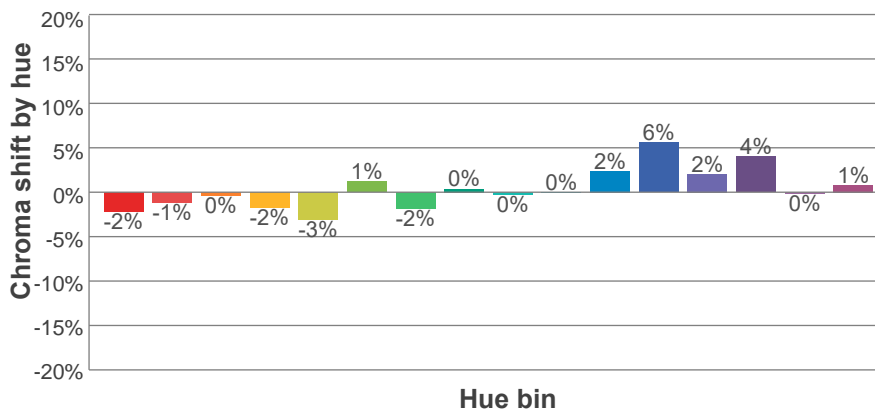
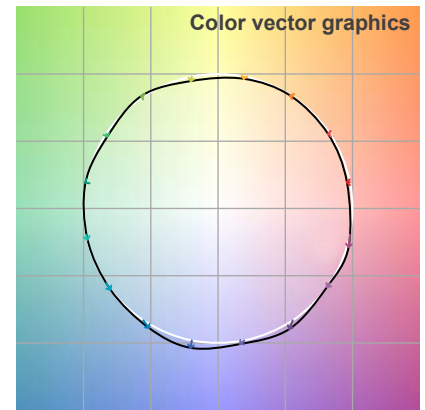
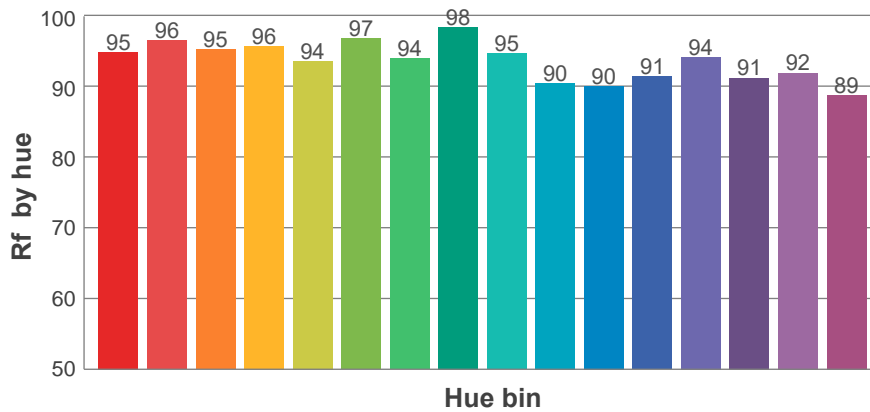
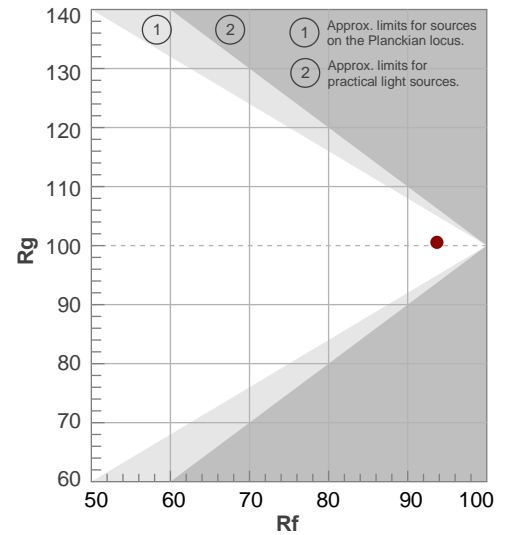
Rf 93.7

Fidelity index Rf

Rg 100.6

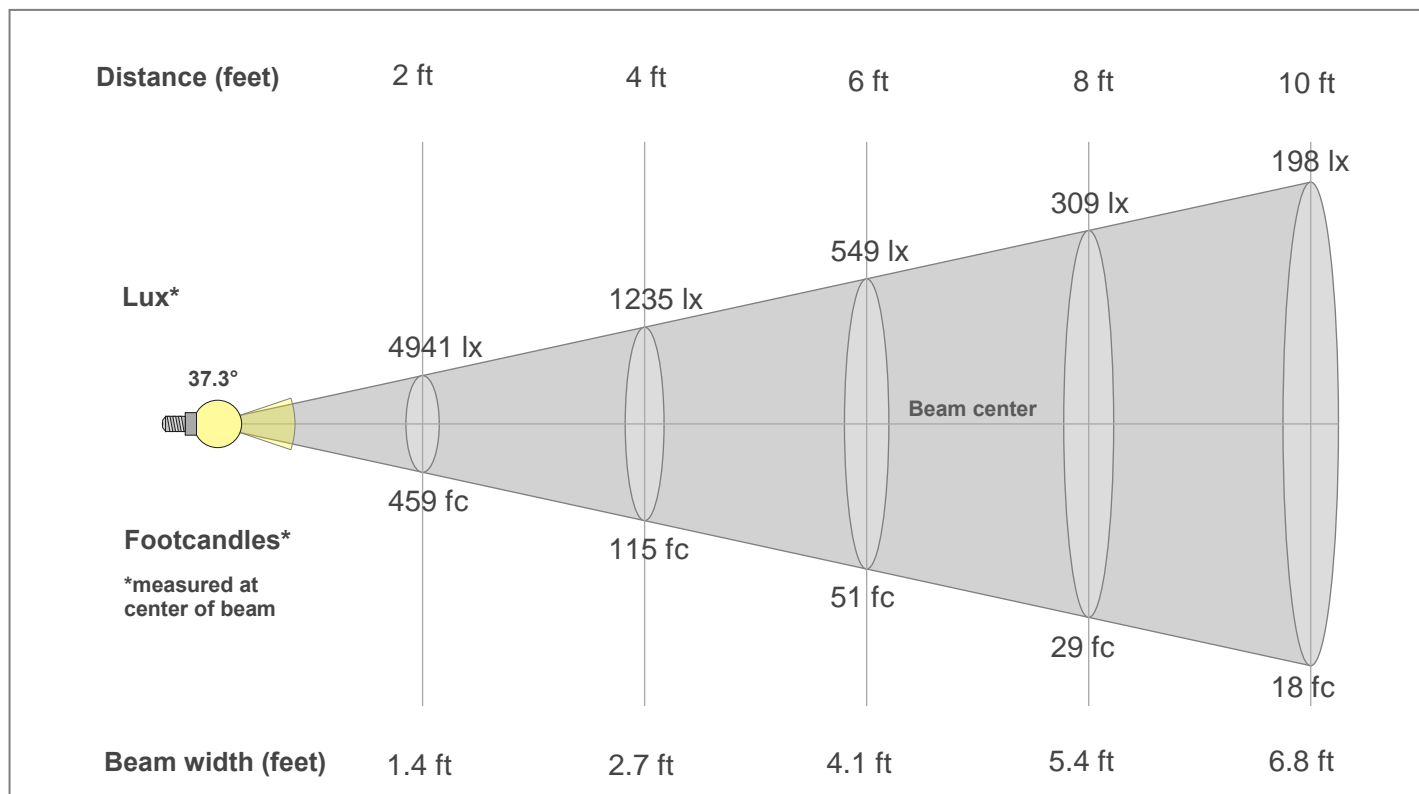
Gamut index Rg

Hue Bin	R _f	Shifts (%)	
		Chroma	Hue
1	95	-2%	0%
2	96	-1%	1%
3	95	0%	2%
4	96	-2%	0%
5	94	-3%	1%
6	97	1%	1%
7	94	-2%	1%
8	98	0%	0%
9	95	0%	4%
10	90	0%	6%
11	90	2%	7%
12	91	6%	0%
13	94	2%	-4%
14	91	4%	-6%
15	92	0%	-3%
16	89	1%	-9%



Color Evaluation Sample

Beam Details



Beam Intensities from 1-20m

1m	2m	3m	4m	5m	6m	7m	8m	9m	10m	11m	12m	13m	14m	15m	16m	17m	18m	19m	20m
3.3ft	6.6ft	9.8ft	13.1ft	16.4ft	19.7ft	23ft	26.2ft	29.5ft	32.8ft	36.1ft	39.4ft	42.7ft	45.9ft	49.2ft	52.5ft	55.8ft	59.1ft	62.3ft	65.6ft
1836lx	459lx	204lx	115lx	73lx	51lx	37lx	29lx	23lx	18lx	15lx	13lx	11lx	9lx	8lx	7lx	6lx	6lx	5lx	5lx
170.6fc	42.6fc	19fc	10.7fc	6.8fc	4.7fc	3.5fc	2.7fc	2.1fc	1.7fc	1.4fc	1.2fc	1fc	0.9fc	0.8fc	0.7fc	0.6fc	0.5fc	0.5fc	0.4fc

Intensities in 0° c-plane

0°	2°	4°	6°	8°	10°	12°	14°	16°	18°	20°	22°	24°	26°	28°	30°	32°	34°	36°	38°
1836	1825	1782	1714	1626	1514	1390	1254	1110	964	824	692	573	468	381	305	241	189	146	111
100%	99%	97%	93%	89%	82%	76%	68%	60%	52%	45%	38%	31%	25%	21%	17%	13%	10%	8%	6%

Intensities in 90° c-plane

0°	2°	4°	6°	8°	10°	12°	14°	16°	18°	20°	22°	24°	26°	28°	30°	32°	34°	36°	38°
1836	1823	1783	1714	1625	1517	1394	1257	1114	968	828	696	580	476	388	314	248	194	150	114
100%	99%	97%	93%	89%	83%	76%	68%	61%	53%	45%	38%	32%	26%	21%	17%	14%	11%	8%	6%

Intensities in 180° c-plane

0°	2°	4°	6°	8°	10°	12°	14°	16°	18°	20°	22°	24°	26°	28°	30°	32°	34°	36°	38°
1836	1825	1782	1714	1626	1514	1390	1254	1110	964	824	692	573	468	381	305	241	189	146	111
100%	99%	97%	93%	89%	82%	76%	68%	60%	52%	45%	38%	31%	25%	21%	17%	13%	10%	8%	6%

Intensities in 270° c-plane

0°	2°	4°	6°	8°	10°	12°	14°	16°	18°	20°	22°	24°	26°	28°	30°	32°	34°	36°	38°
1836	1823	1783	1714	1625	1517	1394	1257	1114	968	828	696	580	476	388	314	248	194	150	114
100%	99%	97%	93%	89%	83%	76%	68%	61%	53%	45%	38%	32%	26%	21%	17%	14%	11%	8%	6%

Beam angle 50%	Field angle 10%	Cut-off angle 2.5%	Intensity ratio in 120°	Intensity ratio in 90°
37.3°	68.7°	88.7°	99.4%	97.0%