

## Photometric / Colorimetric / Electric Report

Fixture Model:

**805-K5-WD-15-PR1-8.5-350-FS-LG-P-1-WH-NL**

Trim Model:

**FS-LG-P-1-WH/NL**

Date:

**7/3/2023**



Light efficiency:

**65 Lumen/Watt**

Light quality:

**CRI: 97.3**

Color temperature:

**3105 K**

CIE 1931:

**x: 0.428  
y: 0.398**

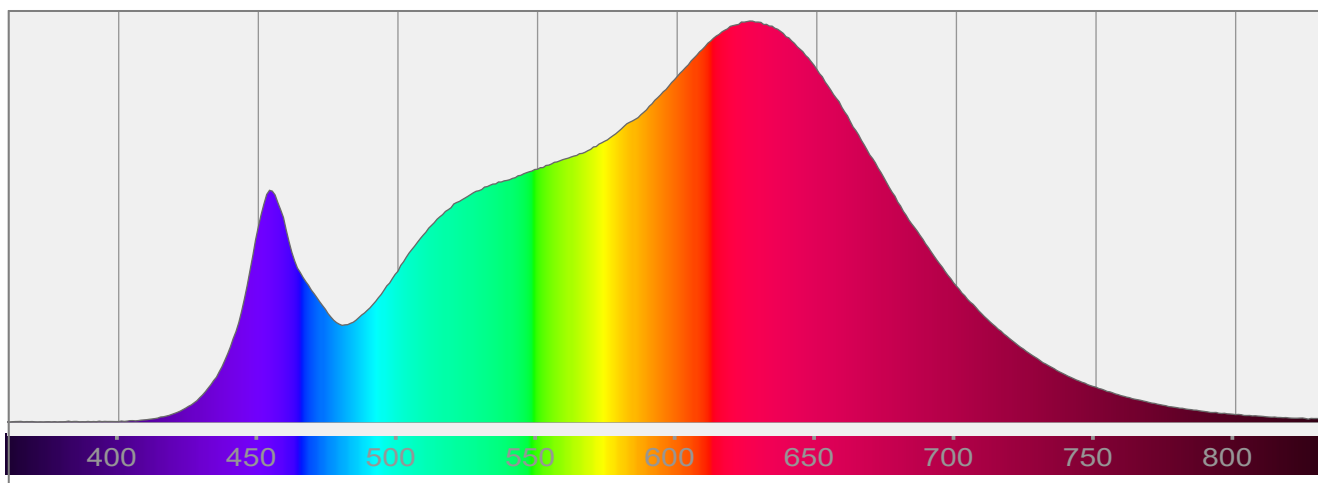
**Output: 944 lm**

**Peak: 3964 cd**

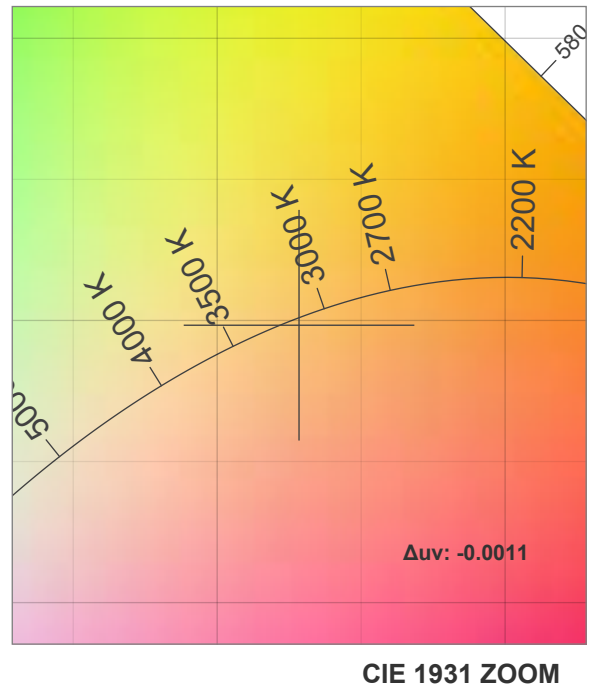
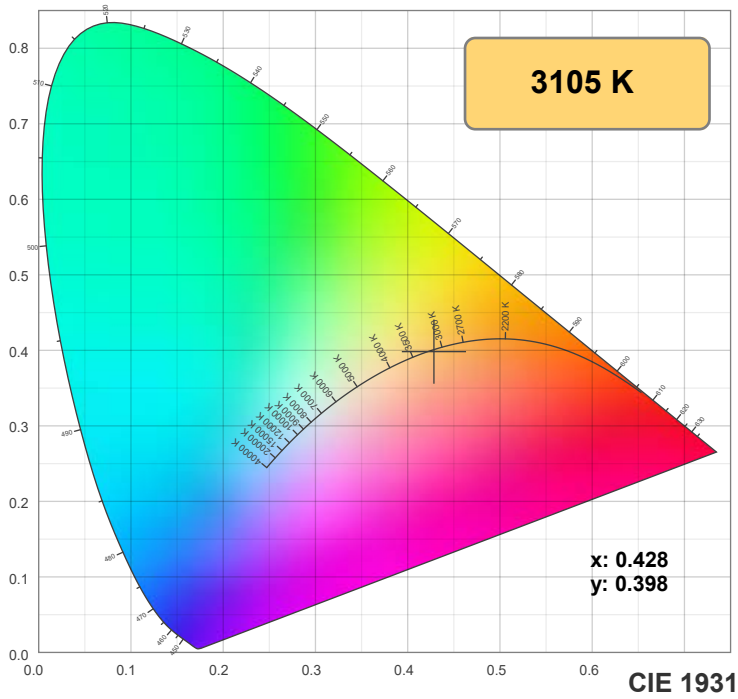
**Power: 14.6 W**

**PF: 0.99**

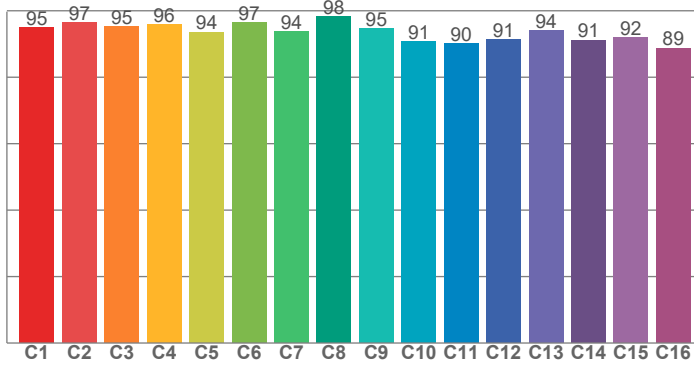
Spectra:



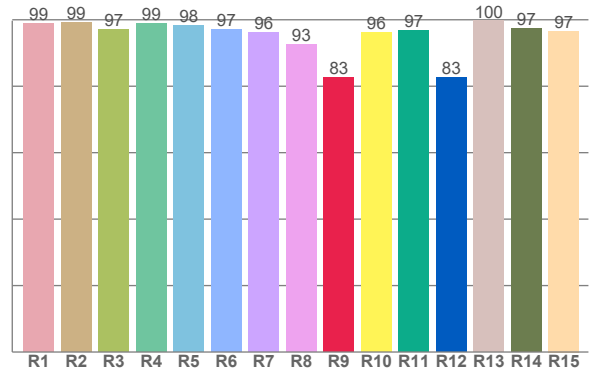
## Color Details



TM-30: 93.7



CRI: 97.3 (R1-R8)



CRI R Values:

R1	R2	R3	R4	R5	R6	R7	R8	R9	R10	R11	R12	R13	R14	R15
99.0	99.1	97.0	98.8	98.4	97.0	96.3	92.7	82.6	96.2	96.9	82.7	99.6	97.3	96.6

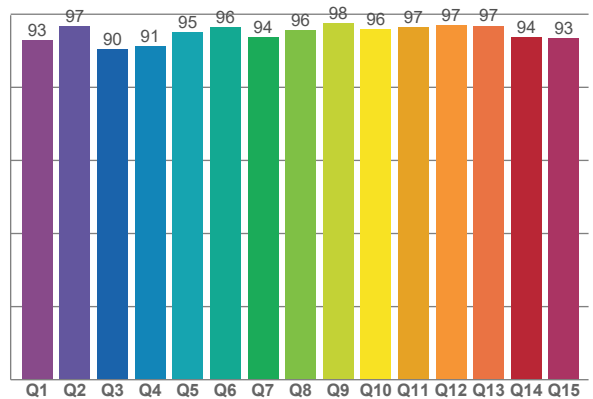
TM30 C Values:

C1	C2	C3	C4	C5	C6	C7	C8	C9	C10	C11	C12	C13	C14	C15	C16
94.9	96.5	95.1	95.8	93.6	96.5	93.9	98.3	94.7	90.6	90.1	91.3	94.0	91.2	92.0	88.8

CQS Q values:

Q1	Q2	Q3	Q4	Q5	Q6	Q7	Q8	Q9	Q10	Q11	Q12	Q13	Q14	Q15
92.9	96.8	90.4	91.2	95.0	96.5	93.6	95.6	97.6	95.8	96.5	96.9	96.8	93.7	93.4

CQS: 94.3



Color Parameters:

CCT	CRI	CRI R9	TM30 Rf	TM30 Rg	CQS	x	y	u	v	$\Delta uv$
3105 K	97.3	82.6	93.7	100.8	94.3	0.428	0.398	0.248	0.345	-0.0011

# TM-30 Details

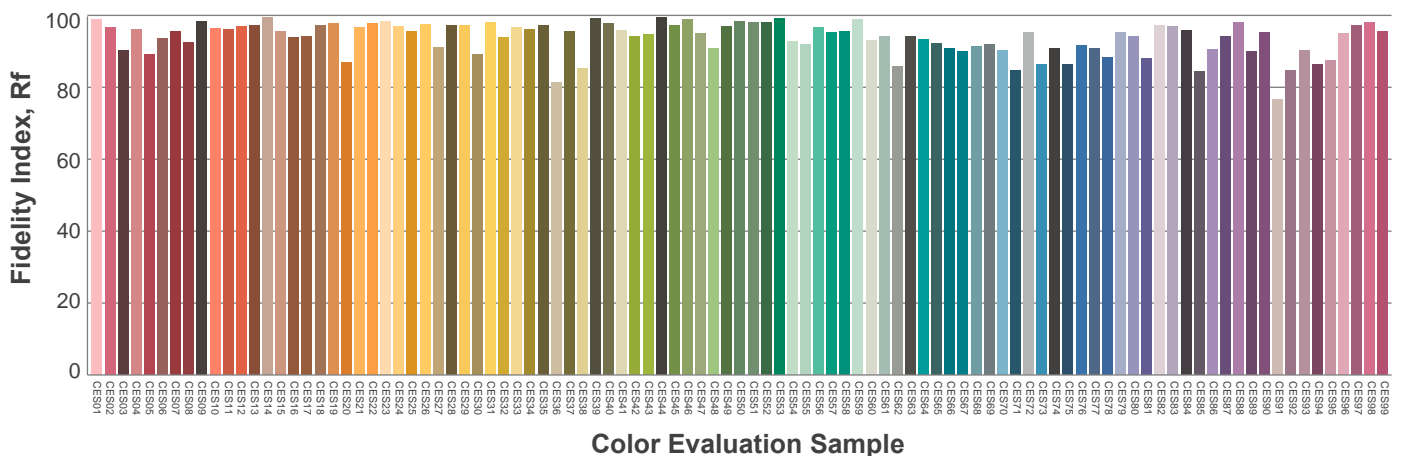
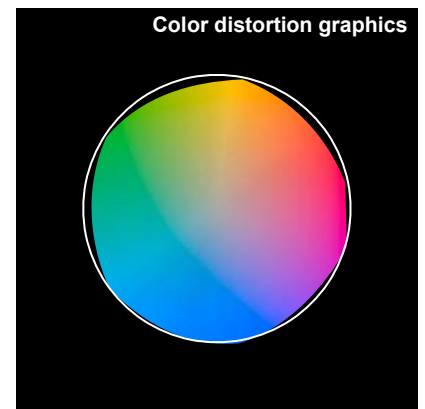
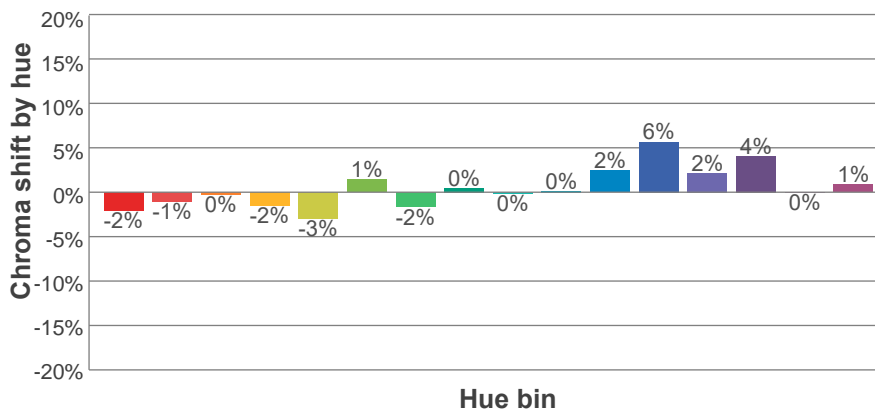
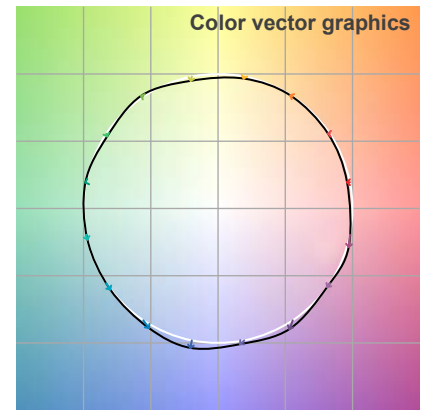
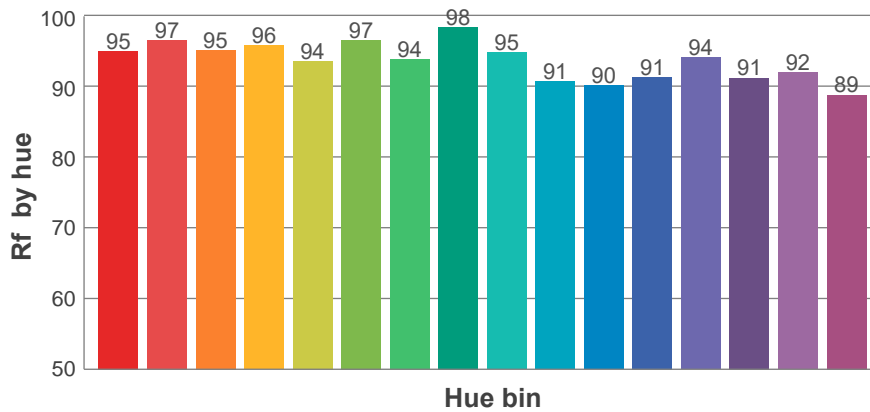
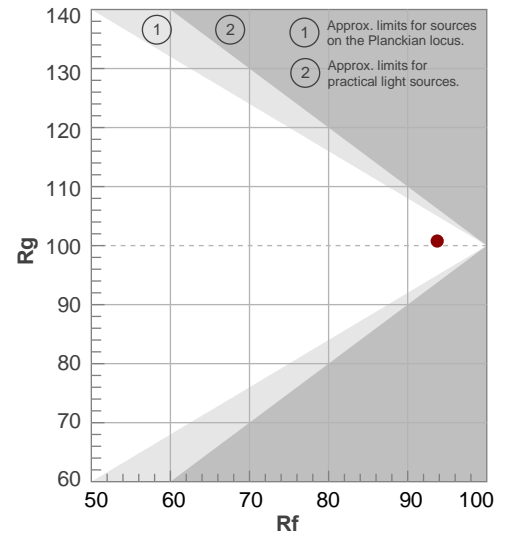
**Rf 93.7**

Fidelity index Rf

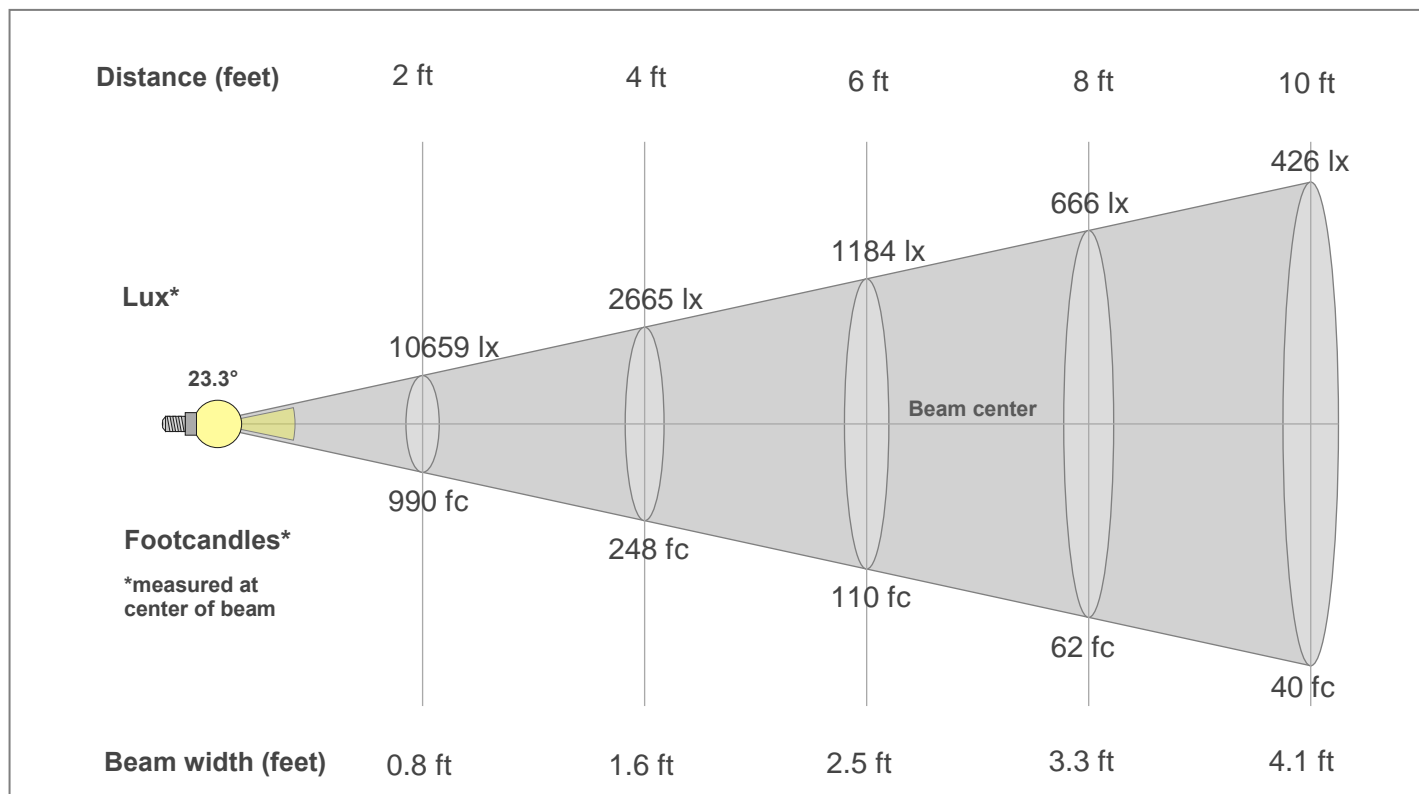
**Rg 100.8**

Gamut index Rg

Hue Bin	R <sub>f</sub>	Shifts (%)	
		Chroma	Hue
1	95	-2%	0%
2	97	-1%	1%
3	95	0%	2%
4	96	-2%	0%
5	94	-3%	1%
6	97	1%	1%
7	94	-2%	1%
8	98	0%	0%
9	95	0%	4%
10	91	0%	6%
11	90	2%	7%
12	91	6%	0%
13	94	2%	-4%
14	91	4%	-6%
15	92	0%	-3%
16	89	1%	-9%



## Beam Details



### Beam Intensities from 1-20m

1m	2m	3m	4m	5m	6m	7m	8m	9m	10m	11m	12m	13m	14m	15m	16m	17m	18m	19m	20m
3.3ft	6.6ft	9.8ft	13.1ft	16.4ft	19.7ft	23ft	26.2ft	29.5ft	32.8ft	36.1ft	39.4ft	42.7ft	45.9ft	49.2ft	52.5ft	55.8ft	59.1ft	62.3ft	65.6ft
3961lx	990lx	440lx	248lx	158lx	110lx	81lx	62lx	49lx	40lx	33lx	28lx	23lx	20lx	18lx	15lx	14lx	12lx	11lx	10lx
368fc	92fc	40.9fc	23fc	14.7fc	10.2fc	7.5fc	5.7fc	4.5fc	3.7fc	3fc	2.6fc	2.2fc	1.9fc	1.6fc	1.4fc	1.3fc	1.1fc	1fc	0.9fc

### Intensities in 0° c-plane

0°	2°	4°	6°	8°	10°	12°	14°	16°	18°	20°	22°	24°	26°	28°	30°	32°	34°	36°	38°
3961	3907	3732	3402	2943	2419	1906	1463	1110	847	652	504	393	307	242	193	154	122	97	79
100%	99%	94%	86%	74%	61%	48%	37%	28%	21%	16%	13%	10%	8%	6%	5%	4%	3%	2%	2%

### Intensities in 90° c-plane

0°	2°	4°	6°	8°	10°	12°	14°	16°	18°	20°	22°	24°	26°	28°	30°	32°	34°	36°	38°
3961	3890	3689	3342	2886	2374	1883	1460	1124	867	672	522	406	319	254	202	160	127	100	81
100%	98%	93%	84%	73%	60%	48%	37%	28%	22%	17%	13%	10%	8%	6%	5%	4%	3%	3%	2%

### Intensities in 180° c-plane

0°	2°	4°	6°	8°	10°	12°	14°	16°	18°	20°	22°	24°	26°	28°	30°	32°	34°	36°	38°
3961	3907	3732	3402	2943	2419	1906	1463	1110	847	652	504	393	307	242	193	154	122	97	79
100%	99%	94%	86%	74%	61%	48%	37%	28%	21%	16%	13%	10%	8%	6%	5%	4%	3%	2%	2%

### Intensities in 270° c-plane

0°	2°	4°	6°	8°	10°	12°	14°	16°	18°	20°	22°	24°	26°	28°	30°	32°	34°	36°	38°
3961	3890	3689	3342	2886	2374	1883	1460	1124	867	672	522	406	319	254	202	160	127	100	81
100%	98%	93%	84%	73%	60%	48%	37%	28%	22%	17%	13%	10%	8%	6%	5%	4%	3%	3%	2%

Beam angle 50%	Field angle 10%	Cut-off angle 2.5%	Intensity ratio in 120°	Intensity ratio in 90°
23.3°	48.2°	71.9°	99.4%	97.6%