

Photometric / Colorimetric / Electric Report

Fixture Model:

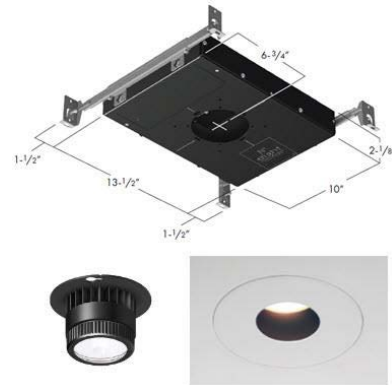
805-K5-WD-25-PR1-8.5-350-FR-P-1-WH

Trim Model:

FR-P-1-WH

Date:

6/30/2023



Light efficiency:

53 Lumen/Watt

Light quality:

CRI: 97.3

Color temperature:

3106 K

CIE 1931:

**x: 0.428
y: 0.398**

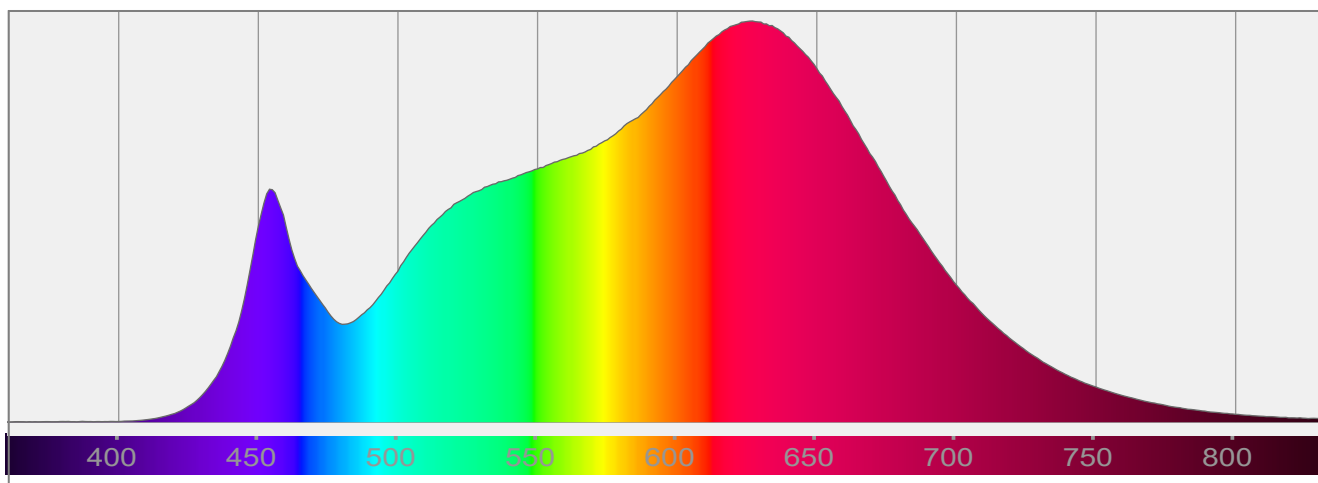
Output: 763 lm

Peak: 2400 cd

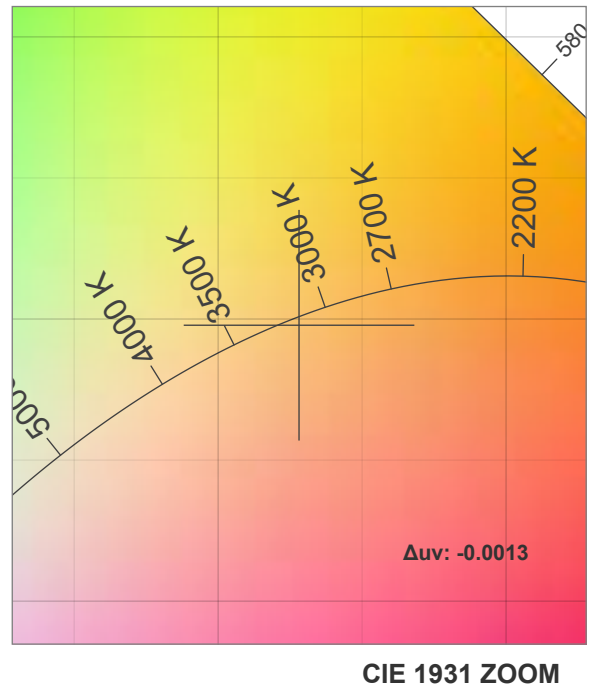
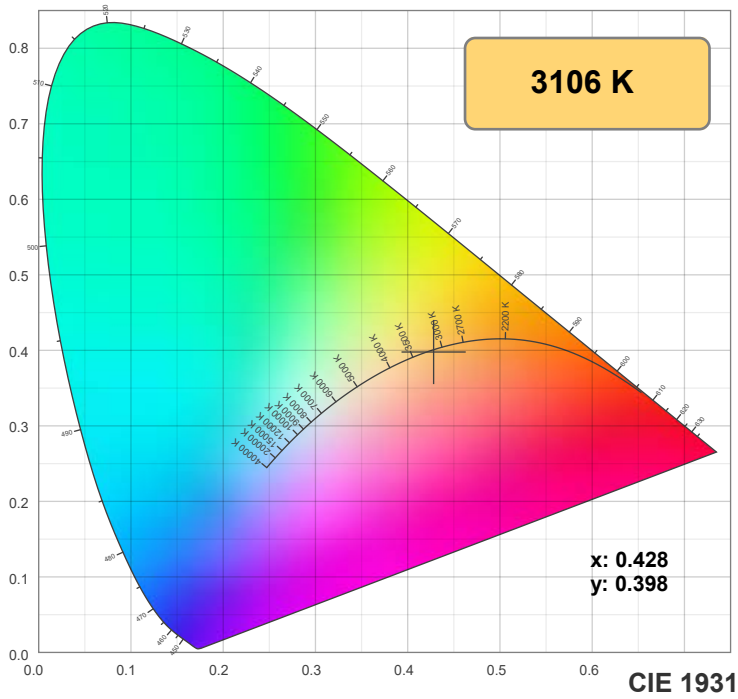
Power: 14.5 W

PF: 0.99

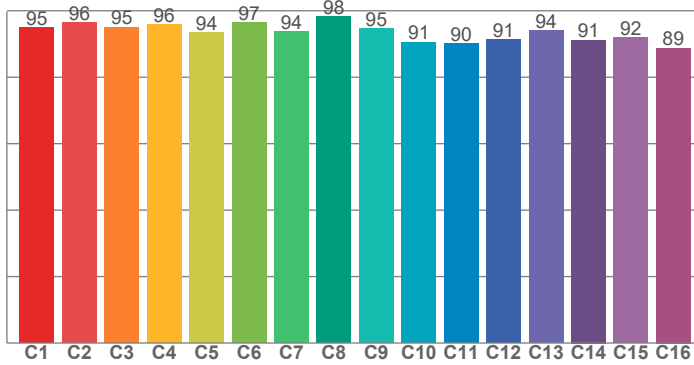
Spectra:



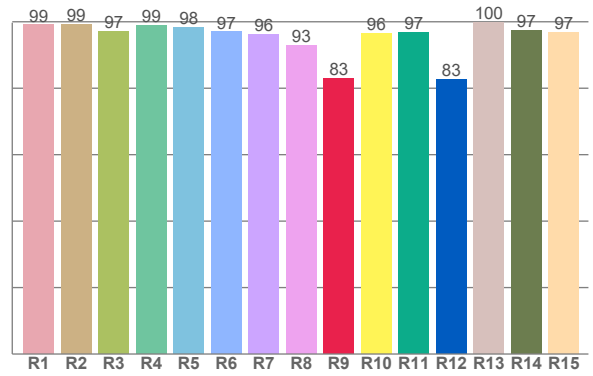
Color Details



TM-30: 93.7



CRI: 97.3 (R1-R8)



CRI R Values:

R1	R2	R3	R4	R5	R6	R7	R8	R9	R10	R11	R12	R13	R14	R15
99.0	99.1	97.1	98.8	98.4	96.9	96.2	92.7	82.9	96.4	96.9	82.7	99.7	97.4	96.7

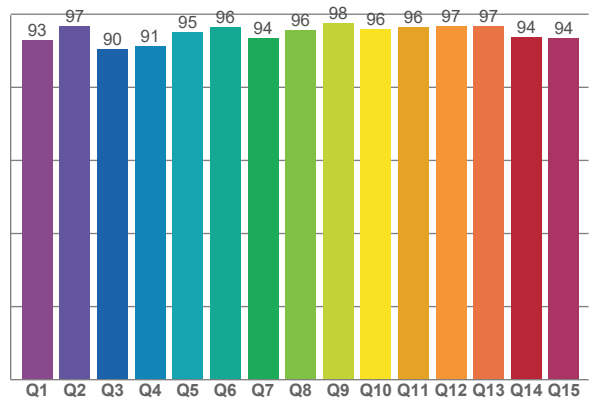
TM30 C Values:

C1	C2	C3	C4	C5	C6	C7	C8	C9	C10	C11	C12	C13	C14	C15	C16
95.0	96.5	95.1	95.7	93.5	96.5	93.8	98.3	94.7	90.6	90.0	91.3	94.1	91.2	92.0	88.8

CQS Q values:

Q1	Q2	Q3	Q4	Q5	Q6	Q7	Q8	Q9	Q10	Q11	Q12	Q13	Q14	Q15
93.0	96.8	90.3	91.1	95.0	96.5	93.5	95.5	97.6	95.8	96.4	96.8	96.8	93.7	93.5

CQS: 94.3



Color Parameters:

CCT	CRI	CRI R9	TM30 Rf	TM30 Rg	CQS	x	y	u	v	Δuv
3106 K	97.3	82.9	93.7	100.8	94.3	0.428	0.398	0.248	0.345	-0.0013

TM-30 Details

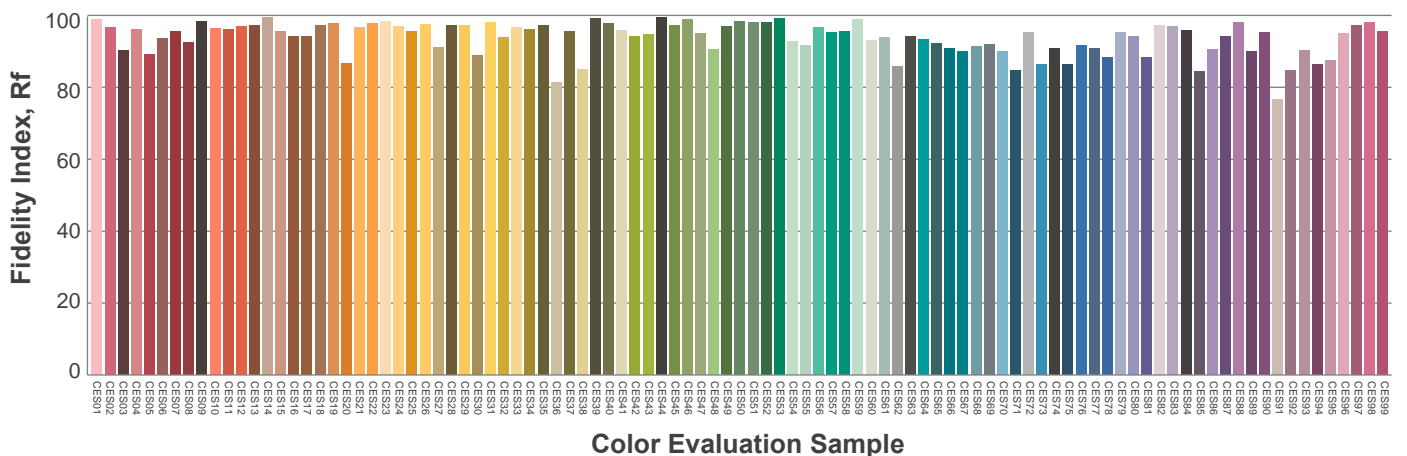
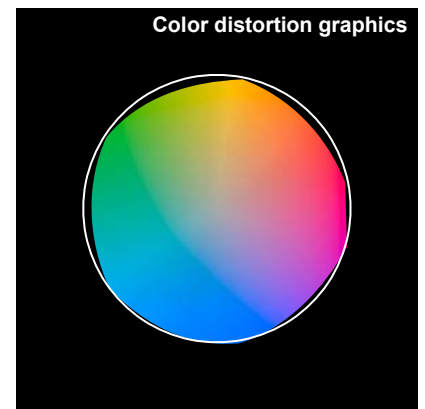
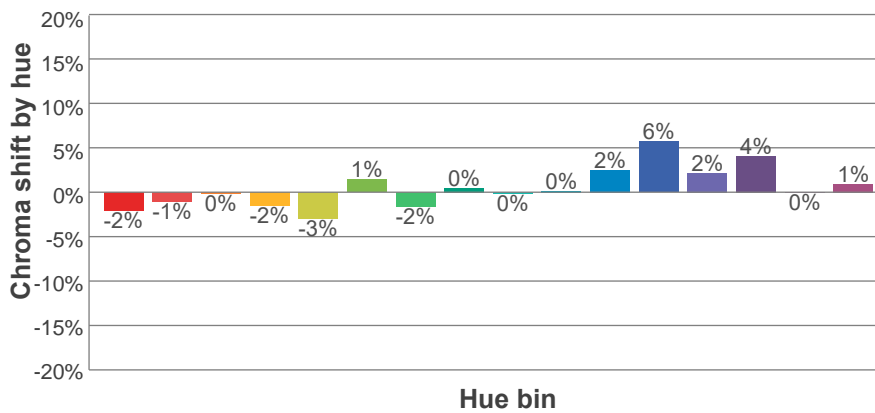
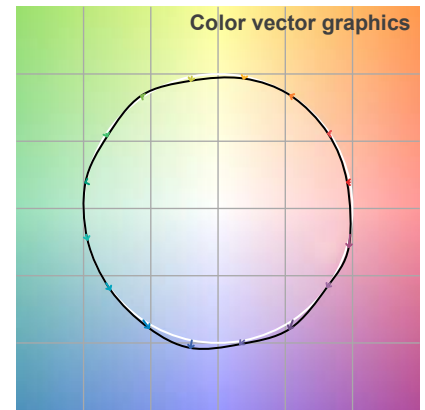
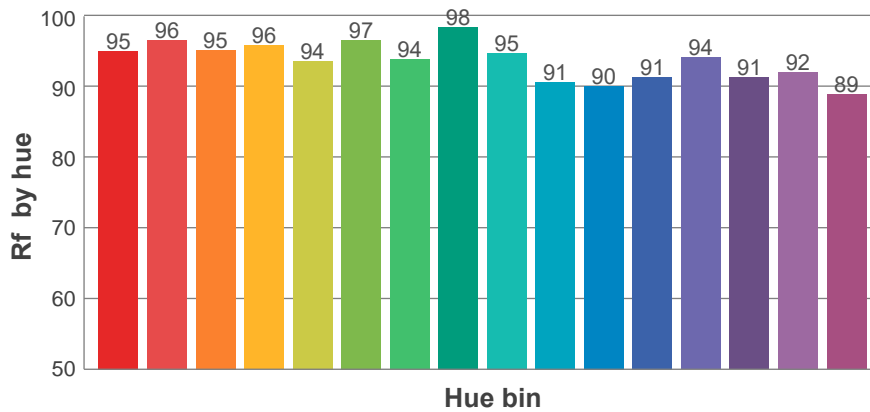
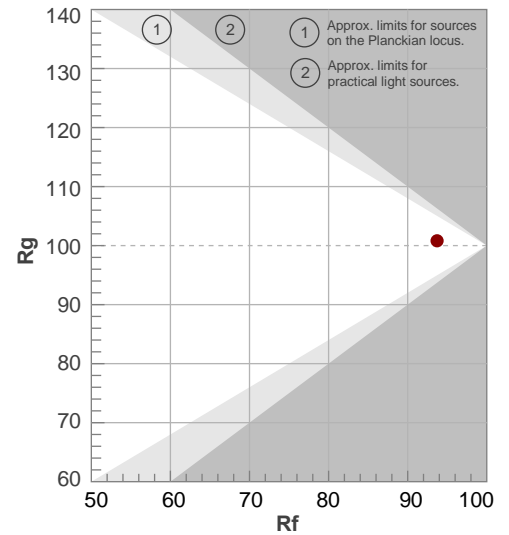
Rf 93.7

Fidelity index Rf

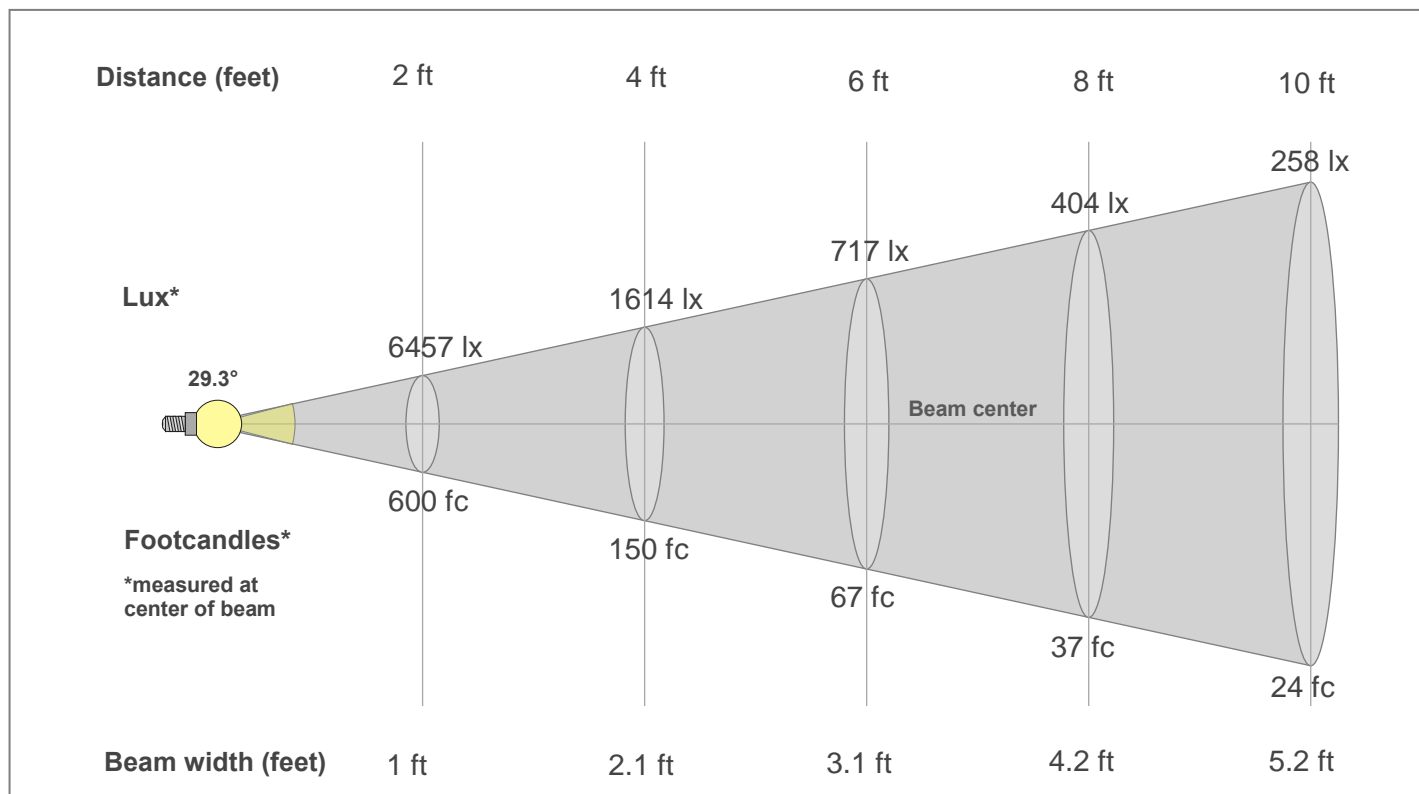
Rg 100.8

Gamut index Rg

Hue Bin	R _f	Shifts (%)	
		Chroma	Hue
1	95	-2%	0%
2	96	-1%	1%
3	95	0%	2%
4	96	-2%	0%
5	94	-3%	1%
6	97	1%	1%
7	94	-2%	1%
8	98	0%	0%
9	95	0%	4%
10	91	0%	6%
11	90	2%	7%
12	91	6%	0%
13	94	2%	-4%
14	91	4%	-6%
15	92	0%	-3%
16	89	1%	-9%



Beam Details



Beam Intensities from 1-20m

1m	2m	3m	4m	5m	6m	7m	8m	9m	10m	11m	12m	13m	14m	15m	16m	17m	18m	19m	20m
3.3ft	6.6ft	9.8ft	13.1ft	16.4ft	19.7ft	23ft	26.2ft	29.5ft	32.8ft	36.1ft	39.4ft	42.7ft	45.9ft	49.2ft	52.5ft	55.8ft	59.1ft	62.3ft	65.6ft
2399lx	600lx	267lx	150lx	96lx	67lx	49lx	37lx	30lx	24lx	20lx	17lx	14lx	12lx	11lx	9lx	8lx	7lx	7lx	6lx
222.9fc	55.7fc	24.8fc	13.9fc	8.9fc	6.2fc	4.5fc	3.5fc	2.8fc	2.2fc	1.8fc	1.5fc	1.3fc	1.1fc	1fc	0.9fc	0.8fc	0.7fc	0.6fc	0.6fc

Intensities in 0° c-plane

0°	2°	4°	6°	8°	10°	12°	14°	16°	18°	20°	22°	24°	26°	28°	30°	32°	34°	36°	38°
2399	2369	2278	2132	1950	1742	1509	1271	1040	830	650	500	387	299	236	187	149	116	87	61
100%	99%	95%	89%	81%	73%	63%	53%	43%	35%	27%	21%	16%	12%	10%	8%	6%	5%	4%	3%

Intensities in 90° c-plane

0°	2°	4°	6°	8°	10°	12°	14°	16°	18°	20°	22°	24°	26°	28°	30°	32°	34°	36°	38°
2399	2366	2274	2131	1953	1746	1518	1284	1058	849	670	520	406	315	247	196	155	120	90	64
100%	99%	95%	89%	81%	73%	63%	54%	44%	35%	28%	22%	17%	13%	10%	8%	6%	5%	4%	3%

Intensities in 180° c-plane

0°	2°	4°	6°	8°	10°	12°	14°	16°	18°	20°	22°	24°	26°	28°	30°	32°	34°	36°	38°
2399	2369	2278	2132	1950	1742	1509	1271	1040	830	650	500	387	299	236	187	149	116	87	61
100%	99%	95%	89%	81%	73%	63%	53%	43%	35%	27%	21%	16%	12%	10%	8%	6%	5%	4%	3%

Intensities in 270° c-plane

0°	2°	4°	6°	8°	10°	12°	14°	16°	18°	20°	22°	24°	26°	28°	30°	32°	34°	36°	38°
2399	2366	2274	2131	1953	1746	1518	1284	1058	849	670	520	406	315	247	196	155	120	90	64
100%	99%	95%	89%	81%	73%	63%	54%	44%	35%	28%	22%	17%	13%	10%	8%	6%	5%	4%	3%

Beam angle 50%	Field angle 10%	Cut-off angle 2.5%	Intensity ratio in 120°	Intensity ratio in 90°
29.3°	56.1°	76.4°	99.5%	98.7%