

## Photometric / Colorimetric / Electric Report

Fixture Model:

**805-K5-WD-25-PR1-8.5-350-FR-LG-P-1-WH-NL**

Trim Model:

**FR-LG-P-1-WH/NL**

Date:

**6/30/2023**



Light efficiency:

**58 Lumen/Watt**

Light quality:

**CRI: 97.3**

Color temperature:

**3109 K**

CIE 1931:

**x: 0.428  
y: 0.398**

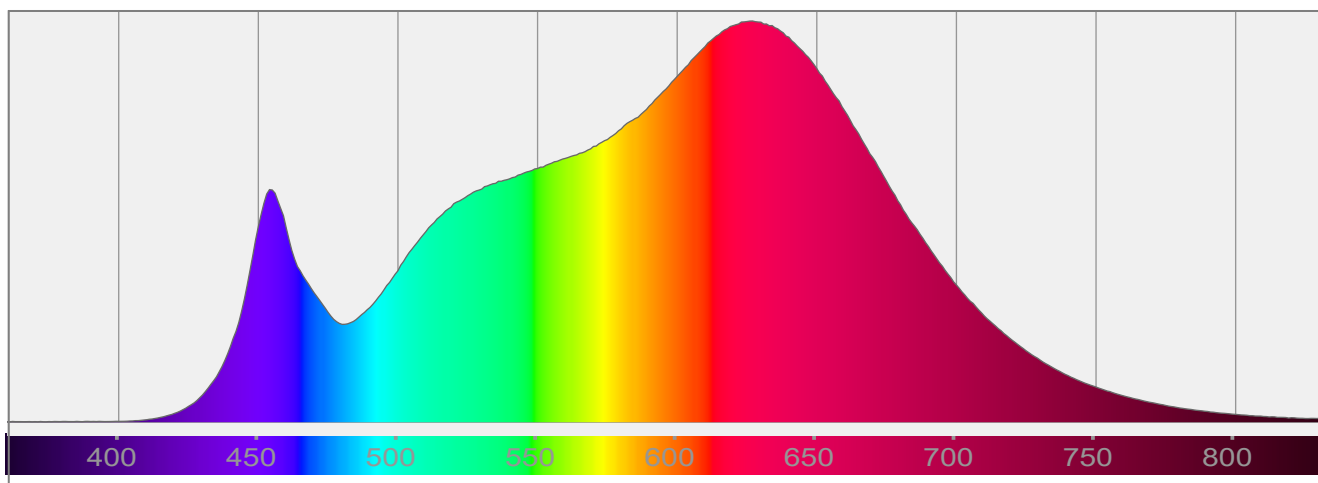
**Output: 850 lm**

**Peak: 2398 cd**

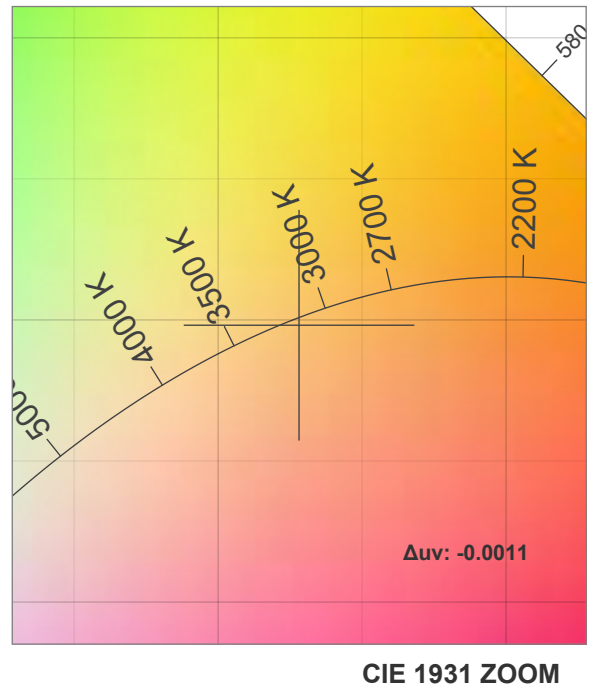
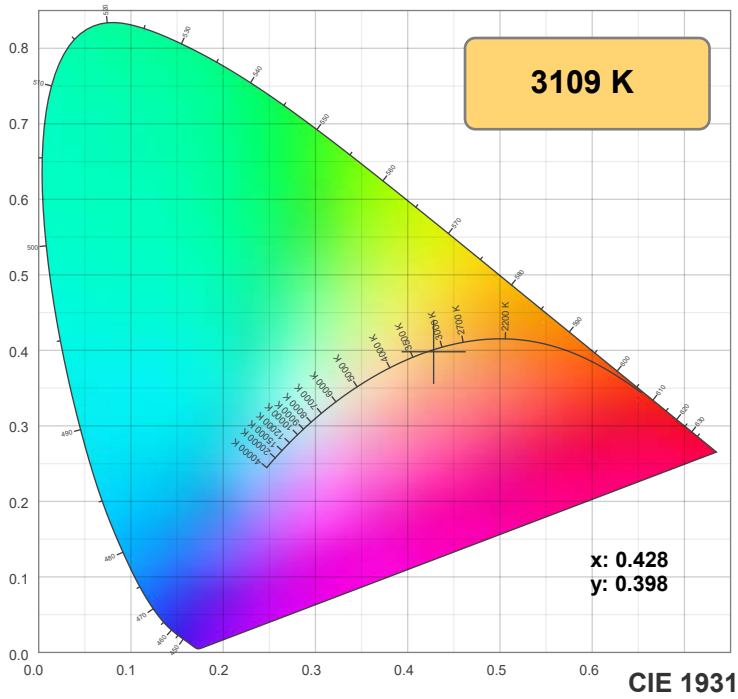
**Power: 14.5 W**

**PF: 0.99**

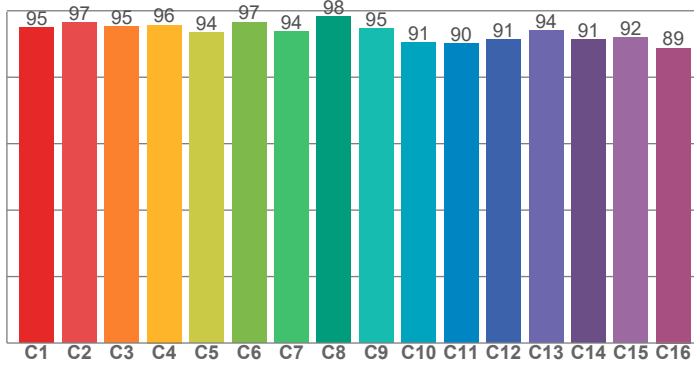
Spectra:



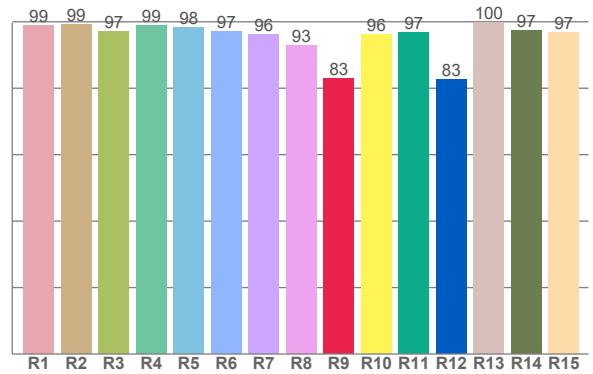
## Color Details



**TM-30: 93.7**



**CRI: 97.3 (R1-R8)**



**CRI R Values:**

R1	R2	R3	R4	R5	R6	R7	R8	R9	R10	R11	R12	R13	R14	R15
99.0	99.1	97.0	98.8	98.4	97.0	96.3	92.8	82.8	96.3	96.9	82.6	99.7	97.3	96.7

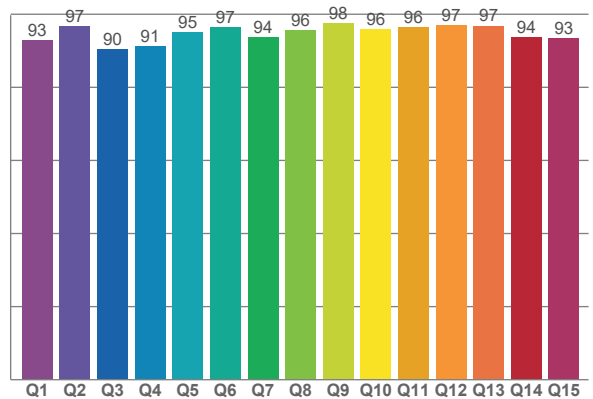
**TM30 C Values:**

C1	C2	C3	C4	C5	C6	C7	C8	C9	C10	C11	C12	C13	C14	C15	C16
94.9	96.5	95.2	95.7	93.5	96.6	93.8	98.3	94.6	90.5	90.0	91.3	94.1	91.2	91.9	88.8

**CQS Q values:**

Q1	Q2	Q3	Q4	Q5	Q6	Q7	Q8	Q9	Q10	Q11	Q12	Q13	Q14	Q15
92.9	96.8	90.4	91.2	95.0	96.5	93.6	95.6	97.6	95.9	96.5	96.9	96.9	93.8	93.5

**CQS: 94.3**



**Color Parameters:**

CCT	CRI	CRI R9	TM30 Rf	TM30 Rg	CQS	x	y	u	v	Δuv
3109 K	97.3	82.8	93.7	100.8	94.3	0.428	0.398	0.247	0.345	-0.0011

# TM-30 Details

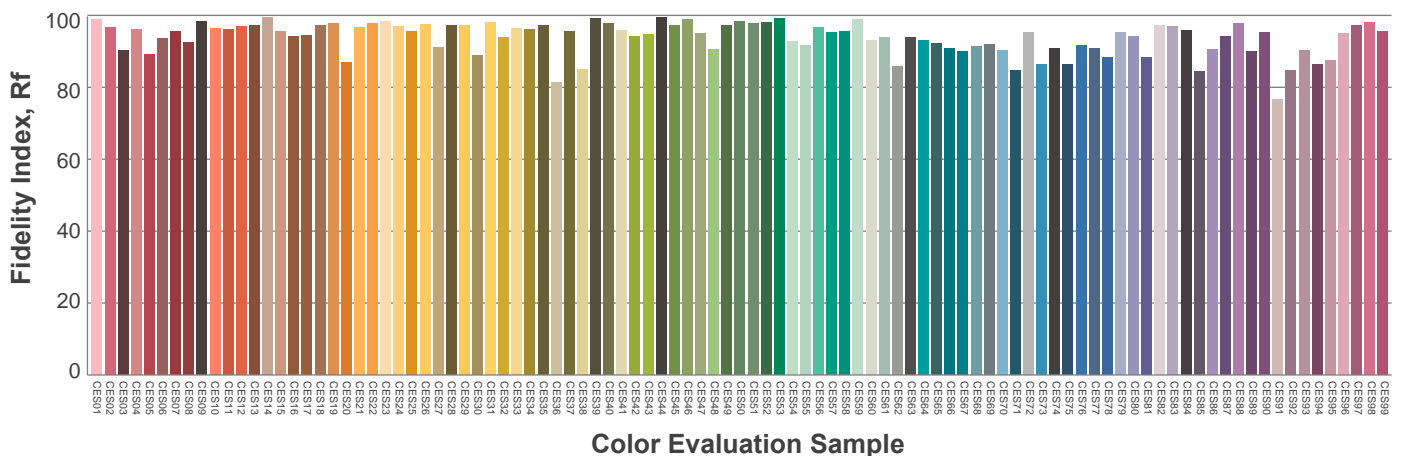
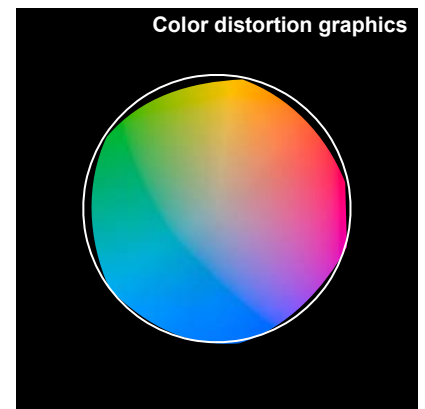
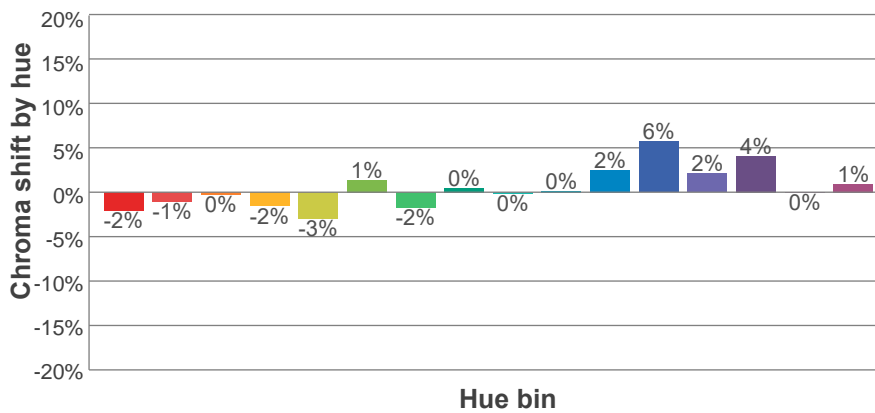
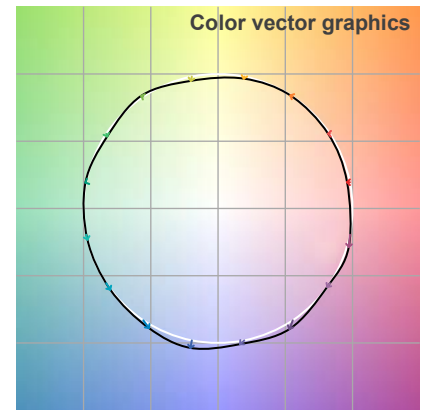
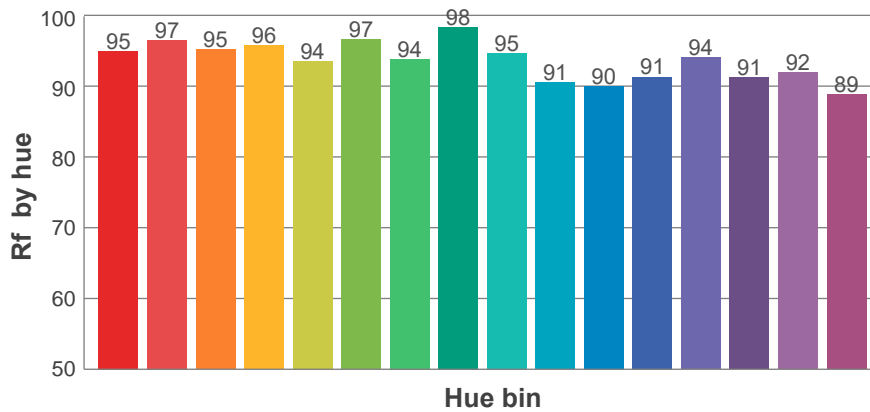
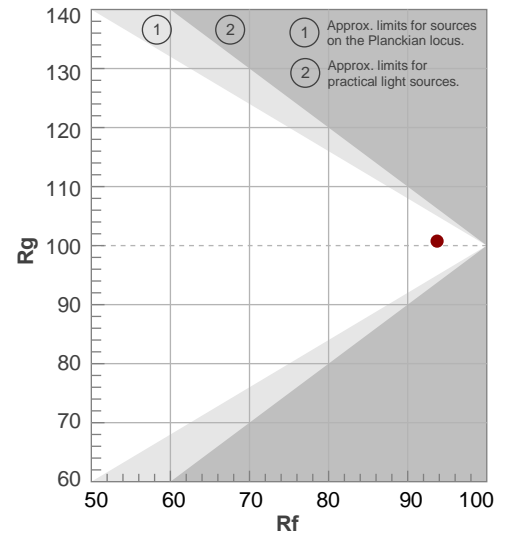
**Rf 93.7**

Fidelity index Rf

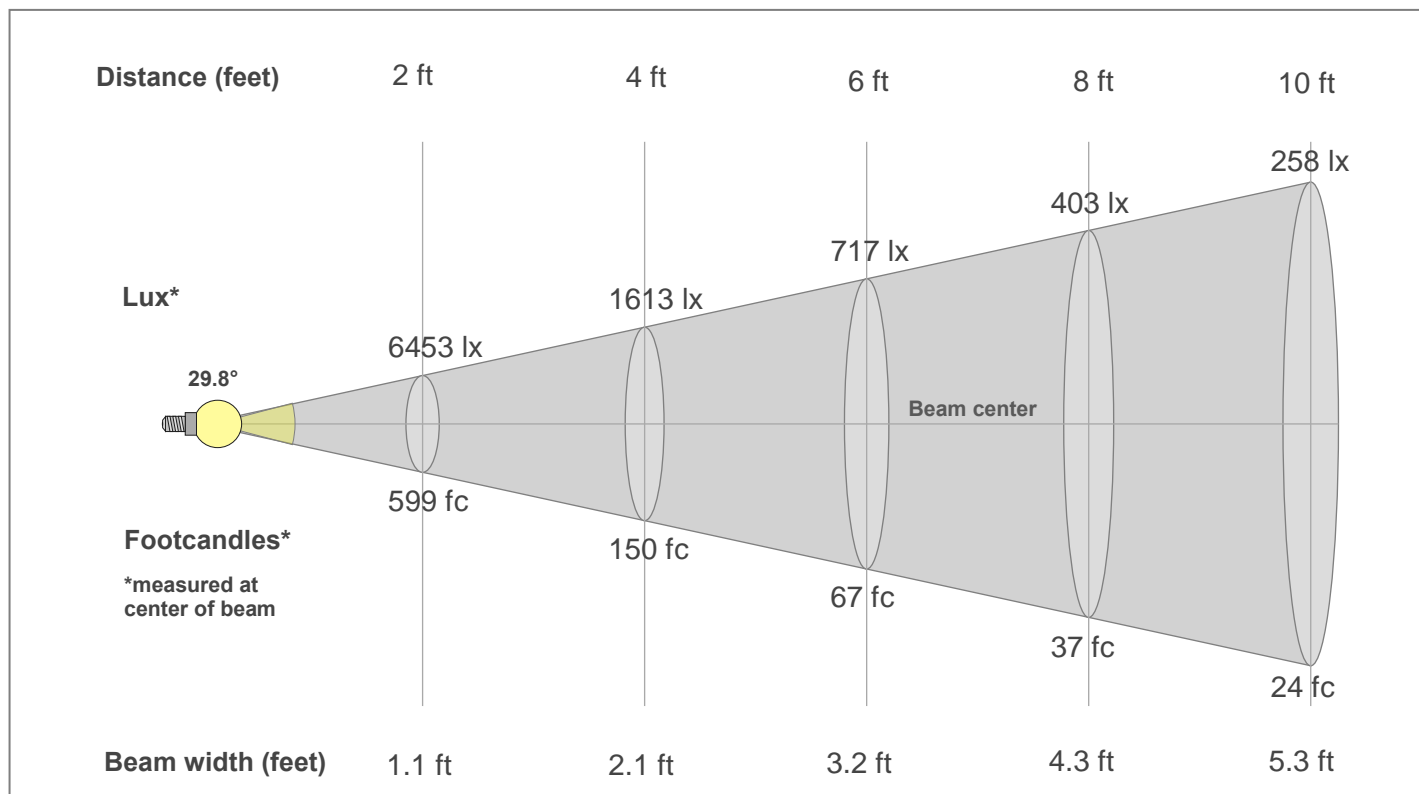
**Rg 100.8**

Gamut index Rg

Hue Bin	R <sub>f</sub>	Shifts (%)	
		Chroma	Hue
1	95	-2%	0%
2	97	-1%	1%
3	95	0%	2%
4	96	-2%	0%
5	94	-3%	1%
6	97	1%	1%
7	94	-2%	1%
8	98	0%	0%
9	95	0%	4%
10	91	0%	6%
11	90	2%	7%
12	91	6%	0%
13	94	2%	-4%
14	91	4%	-6%
15	92	0%	-3%
16	89	1%	-9%



## Beam Details



### Beam Intensities from 1-20m

1m	2m	3m	4m	5m	6m	7m	8m	9m	10m	11m	12m	13m	14m	15m	16m	17m	18m	19m	20m
3.3ft	6.6ft	9.8ft	13.1ft	16.4ft	19.7ft	23ft	26.2ft	29.5ft	32.8ft	36.1ft	39.4ft	42.7ft	45.9ft	49.2ft	52.5ft	55.8ft	59.1ft	62.3ft	65.6ft
2398lx	599lx	266lx	150lx	96lx	67lx	49lx	37lx	30lx	24lx	20lx	17lx	14lx	12lx	11lx	9lx	8lx	7lx	7lx	6lx
222.8fc	55.7fc	24.8fc	13.9fc	8.9fc	6.2fc	4.5fc	3.5fc	2.8fc	2.2fc	1.8fc	1.5fc	1.3fc	1.1fc	1fc	0.9fc	0.8fc	0.7fc	0.6fc	0.6fc

### Intensities in 0° c-plane

0°	2°	4°	6°	8°	10°	12°	14°	16°	18°	20°	22°	24°	26°	28°	30°	32°	34°	36°	38°
2398	2368	2279	2136	1956	1752	1527	1295	1070	863	684	534	419	328	262	211	174	144	121	102
100%	99%	95%	89%	82%	73%	64%	54%	45%	36%	29%	22%	17%	14%	11%	9%	7%	6%	5%	4%

### Intensities in 90° c-plane

0°	2°	4°	6°	8°	10°	12°	14°	16°	18°	20°	22°	24°	26°	28°	30°	32°	34°	36°	38°
2398	2368	2278	2137	1961	1758	1536	1310	1089	884	705	555	438	344	274	220	180	149	124	105
100%	99%	95%	89%	82%	73%	64%	55%	45%	37%	29%	23%	18%	14%	11%	9%	8%	6%	5%	4%

### Intensities in 180° c-plane

0°	2°	4°	6°	8°	10°	12°	14°	16°	18°	20°	22°	24°	26°	28°	30°	32°	34°	36°	38°
2398	2368	2279	2136	1956	1752	1527	1295	1070	863	684	534	419	328	262	211	174	144	121	102
100%	99%	95%	89%	82%	73%	64%	54%	45%	36%	29%	22%	17%	14%	11%	9%	7%	6%	5%	4%

### Intensities in 270° c-plane

0°	2°	4°	6°	8°	10°	12°	14°	16°	18°	20°	22°	24°	26°	28°	30°	32°	34°	36°	38°
2398	2368	2278	2137	1961	1758	1536	1310	1089	884	705	555	438	344	274	220	180	149	124	105
100%	99%	95%	89%	82%	73%	64%	55%	45%	37%	29%	23%	18%	14%	11%	9%	8%	6%	5%	4%

Beam angle 50%	Field angle 10%	Cut-off angle 2.5%	Intensity ratio in 120°	Intensity ratio in 90°
29.8°	58°	88.9°	99.4%	95.7%