

Photometric / Colorimetric / Electric Report

Fixture Model:

805-K5-WD-4-40-PR1-8.5-350-FR-LG-P-1-WH-NL

Trim Model:

FR-LG-P-1-WH/NL

Date:

8/5/2024



Light efficiency:

65 Lumen/Watt

Light quality:

CRI: 96.6

Color temperature:

2997 K

CIE 1931:

**x: 0.436
y: 0.402**

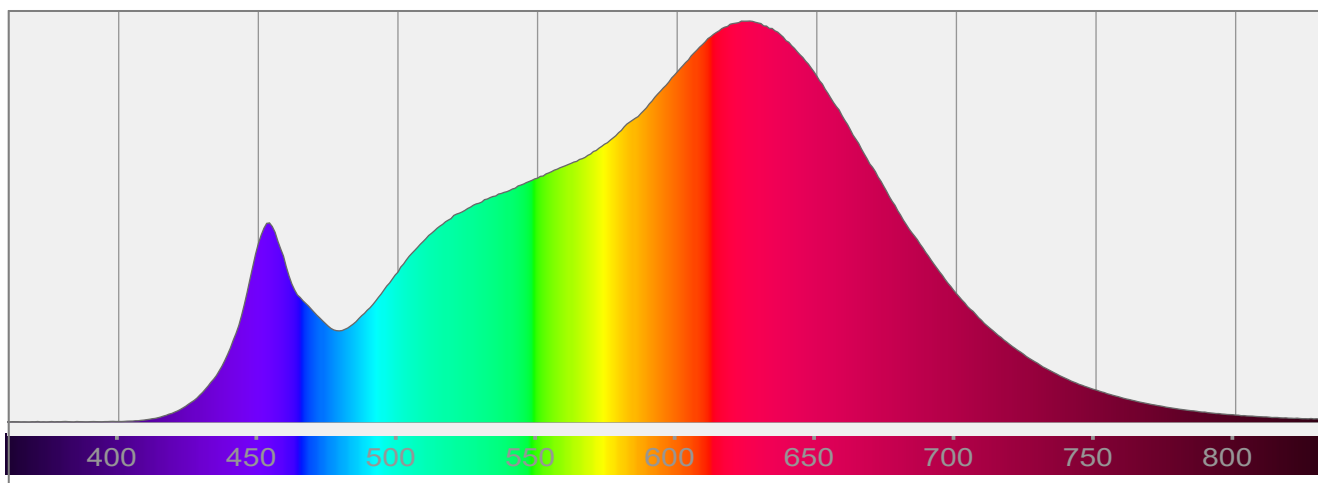
Output: 944 lm

Peak: 1876 cd

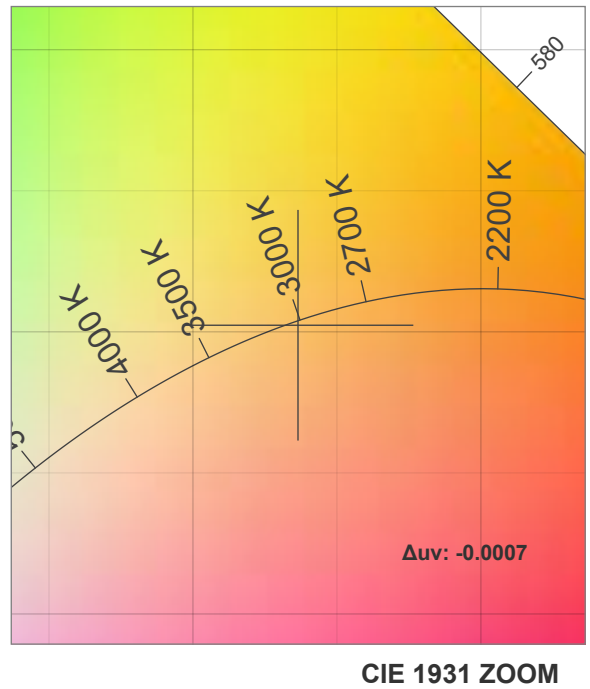
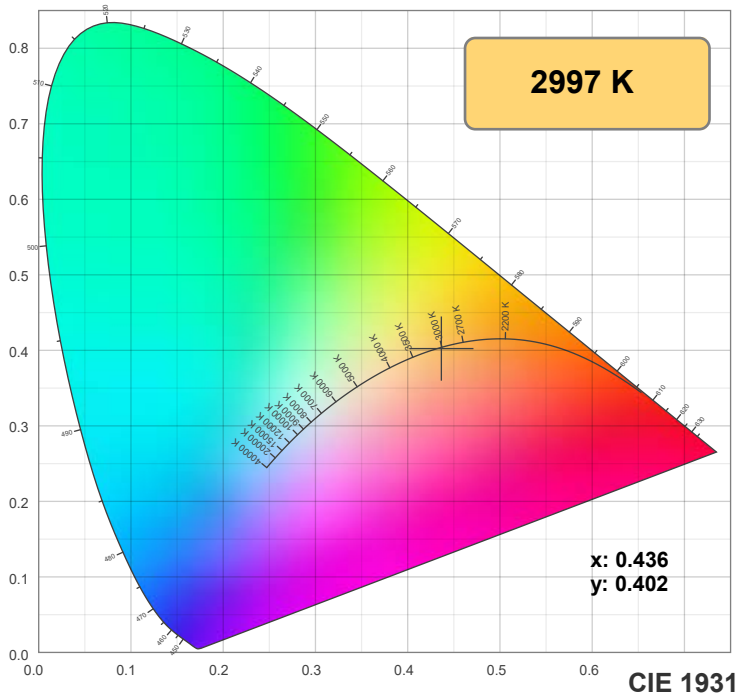
Power: 14.6 W

PF: 0.99

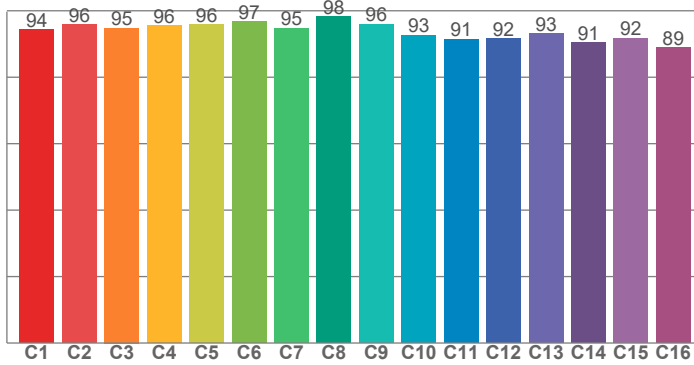
Spectra:



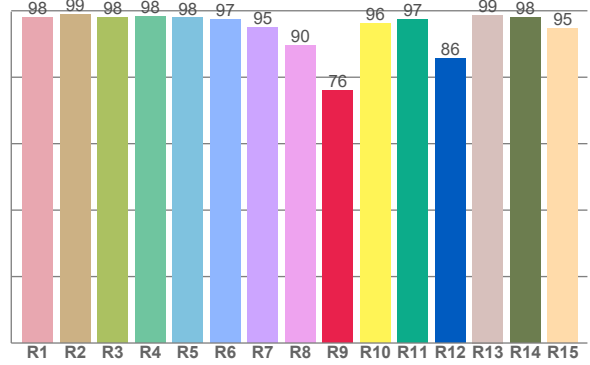
Color Details



TM-30: 94.1



CRI: 96.6 (R1-R8)



CRI R Values:

R1	R2	R3	R4	R5	R6	R7	R8	R9	R10	R11	R12	R13	R14	R15
98.1	98.9	98.0	98.3	97.8	97.3	95.0	89.6	76.0	96.1	97.4	85.7	98.7	98.0	94.6

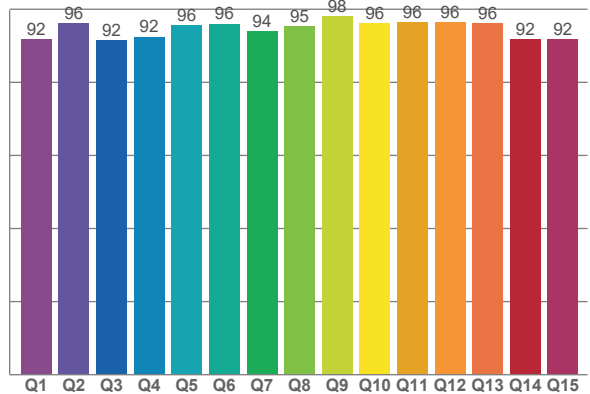
TM30 C Values:

C1	C2	C3	C4	C5	C6	C7	C8	C9	C10	C11	C12	C13	C14	C15	C16
94.3	95.9	94.8	95.5	95.8	96.7	94.8	98.3	96.0	92.7	91.5	91.6	93.1	90.5	91.8	88.9

CQS Q values:

Q1	Q2	Q3	Q4	Q5	Q6	Q7	Q8	Q9	Q10	Q11	Q12	Q13	Q14	Q15
91.7	96.2	91.6	92.5	95.6	96.0	93.9	95.4	98.1	96.0	96.5	96.4	96.1	91.8	91.7

CQS: 94.1



Color Parameters:

CCT	CRI	CRI R9	TM30 Rf	TM30 Rg	CQS	x	y	u	v	Δuv
2997 K	96.6	76.0	94.1	100.4	94.1	0.436	0.402	0.251	0.347	-0.0007

TM-30 Details

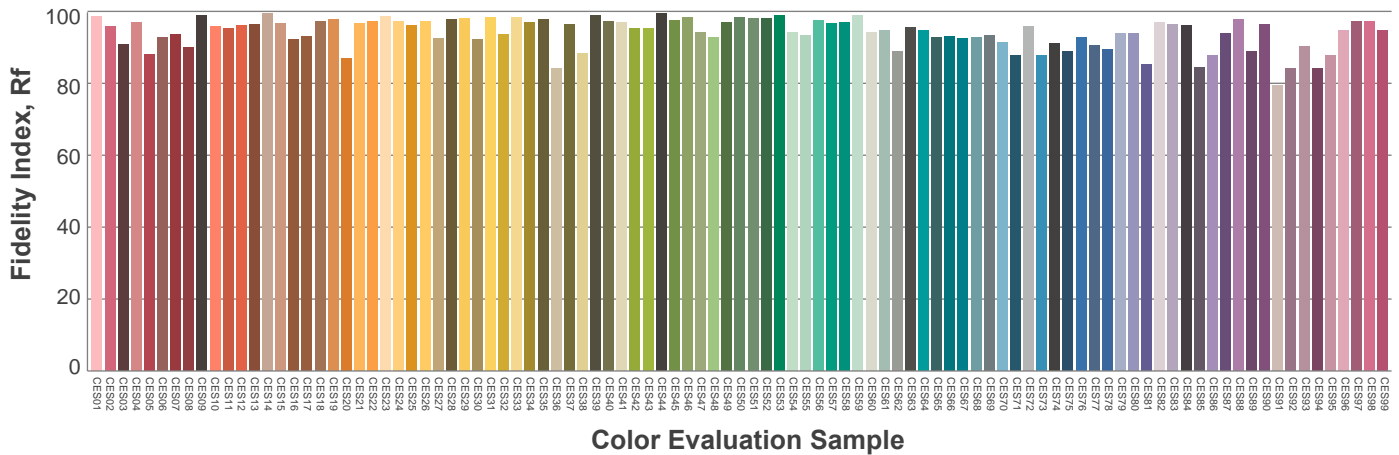
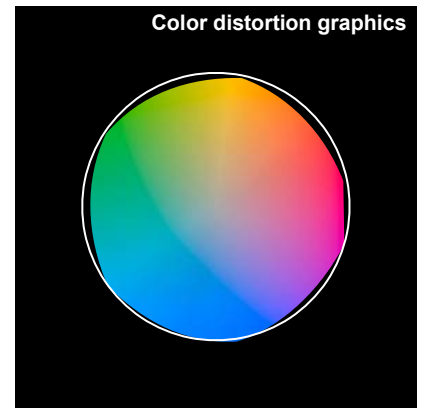
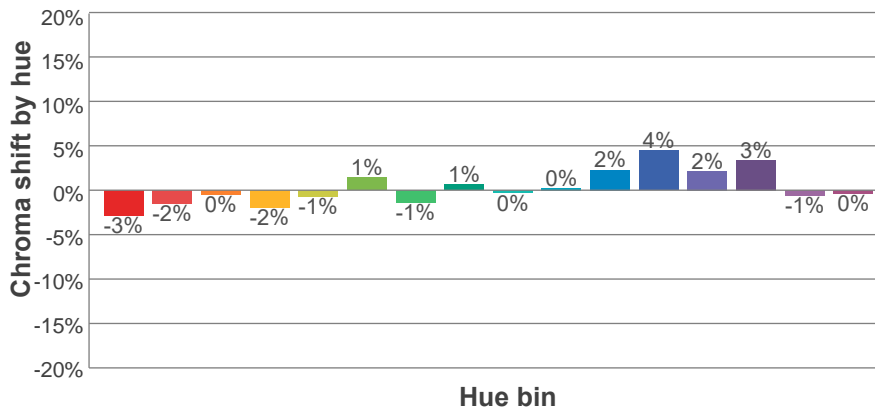
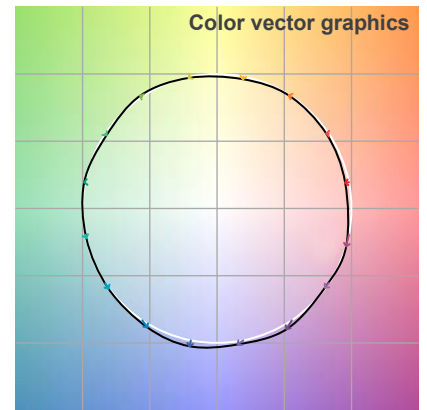
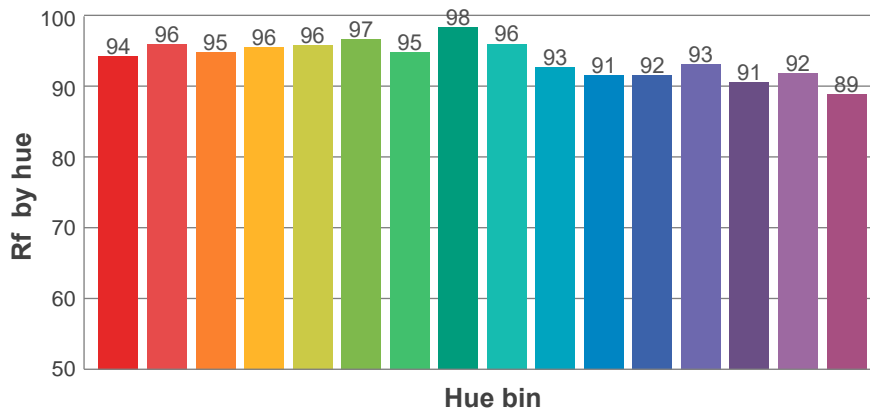
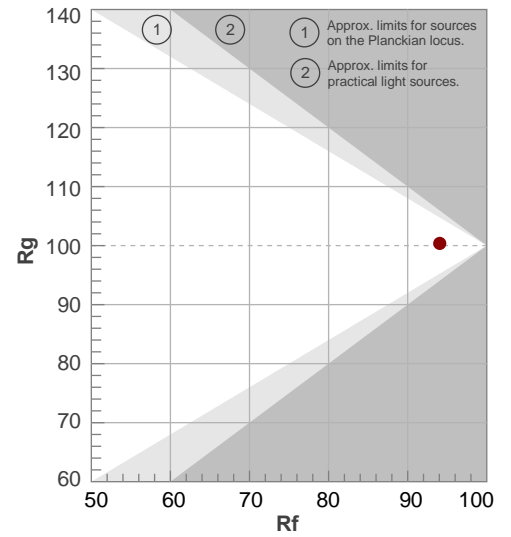
Rf 94.1

Fidelity index Rf

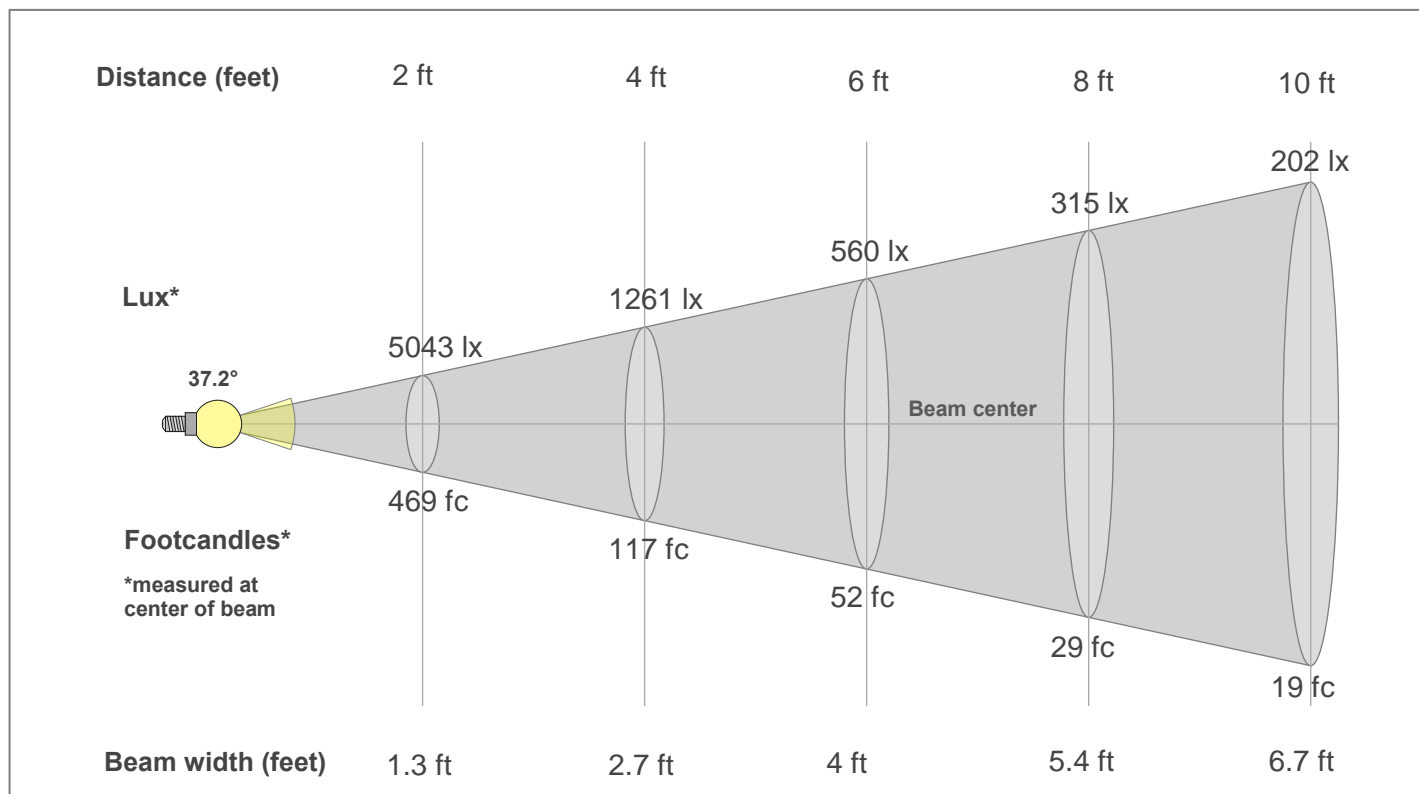
Rg 100.4

Gamut index Rg

Hue Bin	R _f	Shifts (%)	
		Chroma	Hue
1	94	-3%	0%
2	96	-2%	1%
3	95	0%	2%
4	96	-2%	0%
5	96	-1%	2%
6	97	1%	1%
7	95	-1%	0%
8	98	1%	0%
9	96	0%	2%
10	93	0%	5%
11	91	2%	6%
12	92	4%	0%
13	93	2%	-5%
14	91	3%	-7%
15	92	-1%	-4%
16	89	0%	-9%



Beam Details



Beam Intensities from 1-20m

1m	2m	3m	4m	5m	6m	7m	8m	9m	10m	11m	12m	13m	14m	15m	16m	17m	18m	19m	20m
3.3ft	6.6ft	9.8ft	13.1ft	16.4ft	19.7ft	23ft	26.2ft	29.5ft	32.8ft	36.1ft	39.4ft	42.7ft	45.9ft	49.2ft	52.5ft	55.8ft	59.1ft	62.3ft	65.6ft
1874lx	469lx	208lx	117lx	75lx	52lx	38lx	29lx	23lx	19lx	15lx	13lx	11lx	10lx	8lx	7lx	6lx	6lx	5lx	5lx
174.1fc	43.5fc	19.3fc	10.9fc	7fc	4.8fc	3.6fc	2.7fc	2.1fc	1.7fc	1.4fc	1.2fc	1fc	0.9fc	0.8fc	0.7fc	0.6fc	0.5fc	0.5fc	0.4fc

Intensities in 0° c-plane

0°	2°	4°	6°	8°	10°	12°	14°	16°	18°	20°	22°	24°	26°	28°	30°	32°	34°	36°	38°
1874	1862	1819	1748	1655	1544	1418	1282	1134	985	843	712	595	492	408	335	273	222	180	145
100%	99%	97%	93%	88%	82%	76%	68%	60%	53%	45%	38%	32%	26%	22%	18%	15%	12%	10%	8%

Intensities in 90° c-plane

0°	2°	4°	6°	8°	10°	12°	14°	16°	18°	20°	22°	24°	26°	28°	30°	32°	34°	36°	38°
1874	1859	1815	1745	1650	1538	1413	1274	1128	980	839	708	589	489	403	330	269	218	176	142
100%	99%	97%	93%	88%	82%	75%	68%	60%	52%	45%	38%	31%	26%	21%	18%	14%	12%	9%	8%

Intensities in 180° c-plane

0°	2°	4°	6°	8°	10°	12°	14°	16°	18°	20°	22°	24°	26°	28°	30°	32°	34°	36°	38°
1874	1862	1819	1748	1655	1544	1418	1282	1134	985	843	712	595	492	408	335	273	222	180	145
100%	99%	97%	93%	88%	82%	76%	68%	60%	53%	45%	38%	32%	26%	22%	18%	15%	12%	10%	8%

Intensities in 270° c-plane

0°	2°	4°	6°	8°	10°	12°	14°	16°	18°	20°	22°	24°	26°	28°	30°	32°	34°	36°	38°
1874	1859	1815	1745	1650	1538	1413	1274	1128	980	839	708	589	489	403	330	269	218	176	142
100%	99%	97%	93%	88%	82%	75%	68%	60%	52%	45%	38%	31%	26%	21%	18%	14%	12%	9%	8%

Beam angle 50%	Field angle 10%	Cut-off angle 2.5%	Intensity ratio in 120°	Intensity ratio in 90°
37.2°	71°	95.6°	99.3%	95.5%