

Photometric / Colorimetric / Electric Report

Fixture Model:

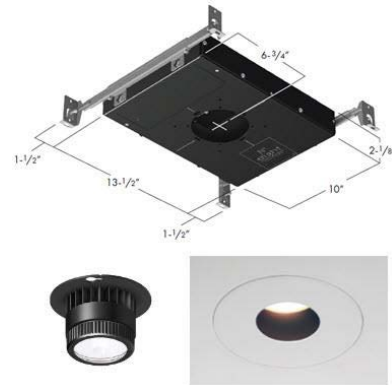
805-K5-WD-2-25-PR1-8.5-350-FR-P-1-WH

Trim Model:

FR-P-1-WH

Date:

7/5/2023



Light efficiency:

54 Lumen/Watt

Light quality:

CRI: 97.0

Color temperature:

2855 K

CIE 1931:

**x: 0.445
y: 0.402**

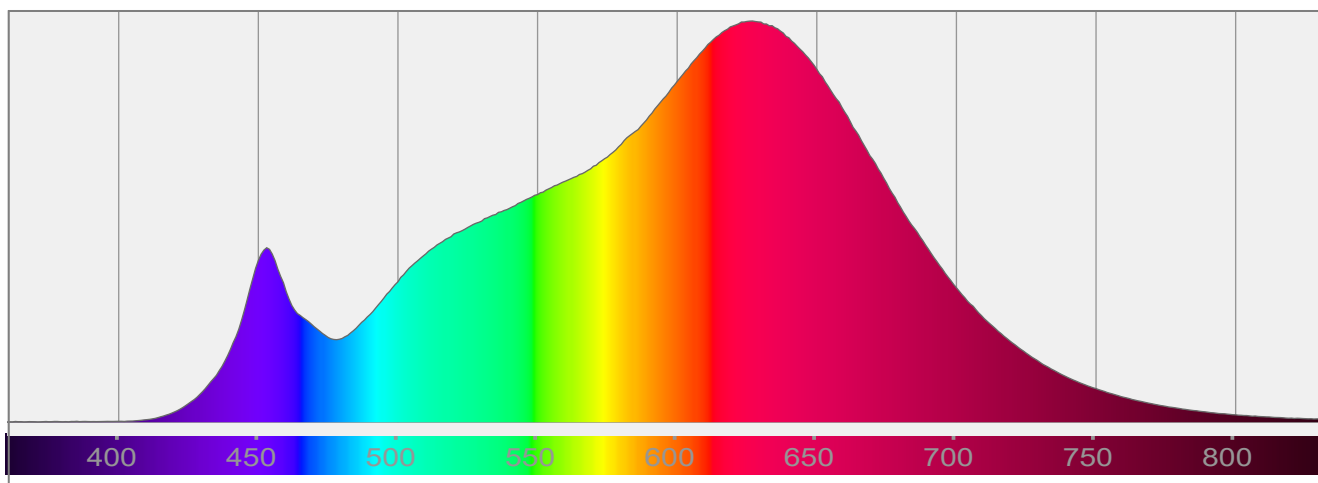
Output: 798 lm

Peak: 2476 cd

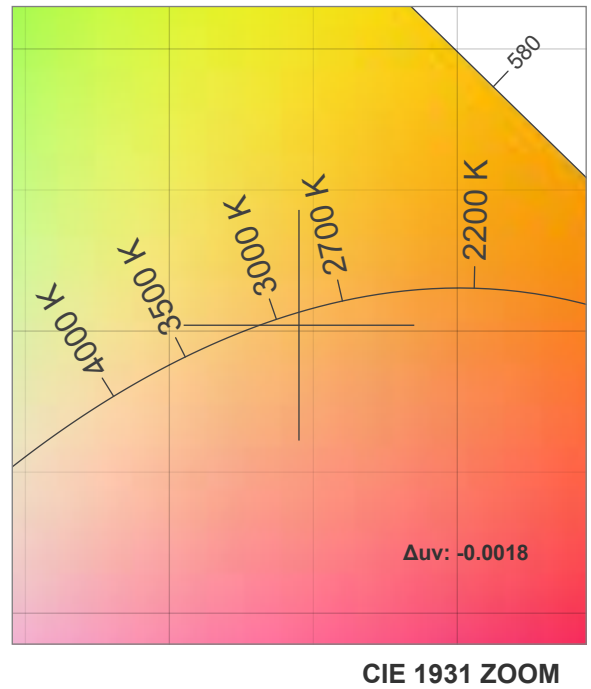
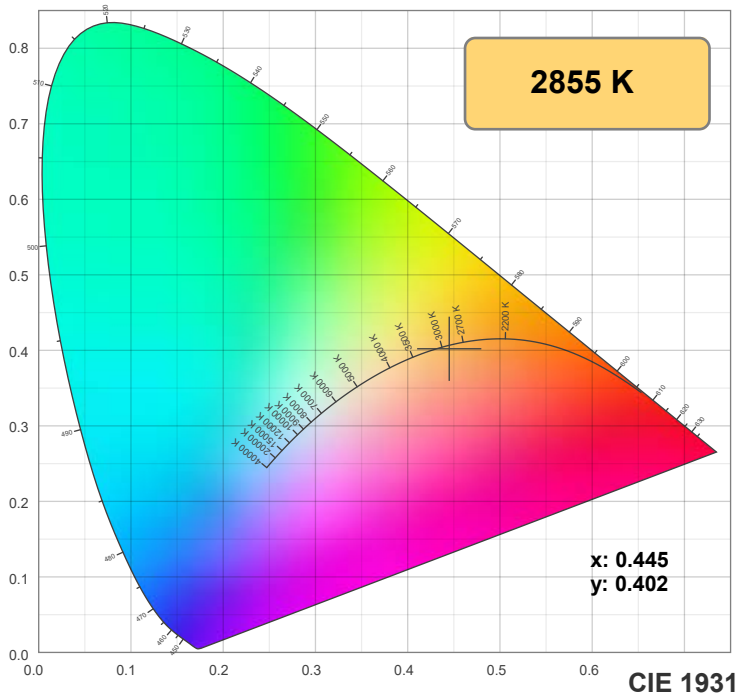
Power: 14.9 W

PF: 0.99

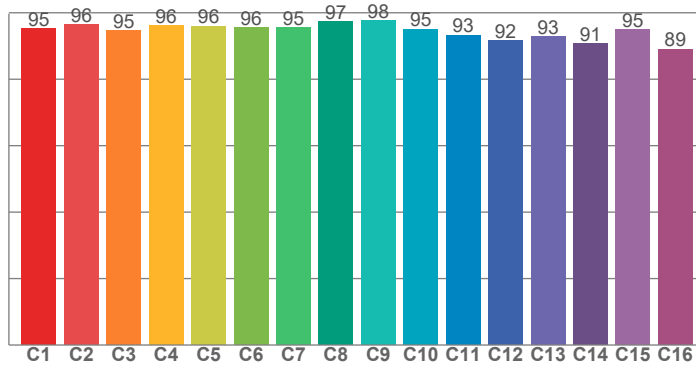
Spectra:



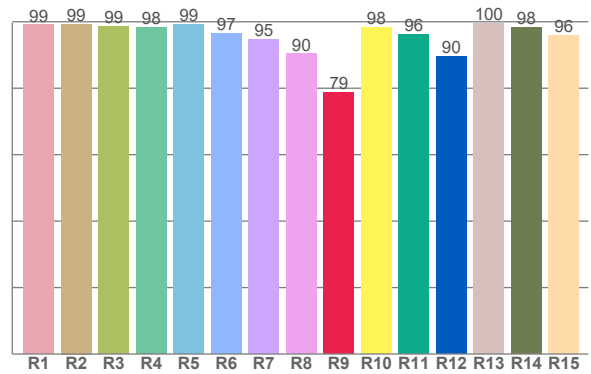
Color Details



TM-30: 94.7



CRI: 97.0 (R1-R8)



CRI R Values:

R1	R2	R3	R4	R5	R6	R7	R8	R9	R10	R11	R12	R13	R14	R15
99.0	99.3	98.5	98.3	99.3	96.6	94.7	90.3	78.7	98.2	96.1	89.7	99.6	98.3	95.8

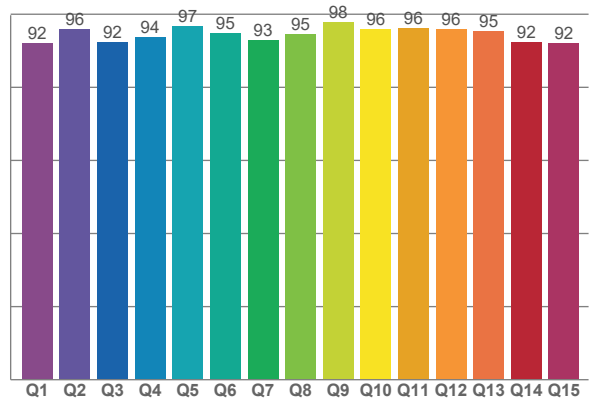
TM30 C Values:

C1	C2	C3	C4	C5	C6	C7	C8	C9	C10	C11	C12	C13	C14	C15	C16
95.1	96.3	94.6	96.2	96.0	95.6	95.5	97.5	97.6	95.1	93.3	91.7	92.8	90.8	95.0	89.1

CQS Q values:

Q1	Q2	Q3	Q4	Q5	Q6	Q7	Q8	Q9	Q10	Q11	Q12	Q13	Q14	Q15
92.0	96.0	92.2	93.7	96.8	94.7	92.8	94.6	97.8	95.8	96.1	95.8	95.4	92.3	92.0

CQS: 94.1



Color Parameters:

CCT	CRI	CRI R9	TM30 Rf	TM30 Rg	CQS	x	y	u	v	Δuv
2855 K	97.0	78.7	94.7	101.3	94.1	0.445	0.402	0.257	0.348	-0.0018

TM-30 Details

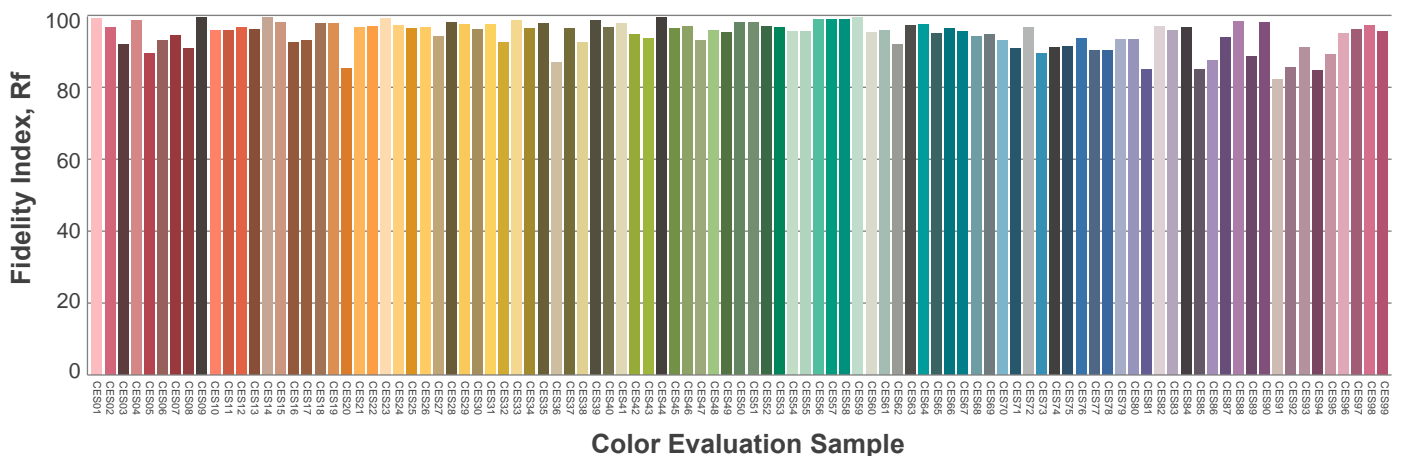
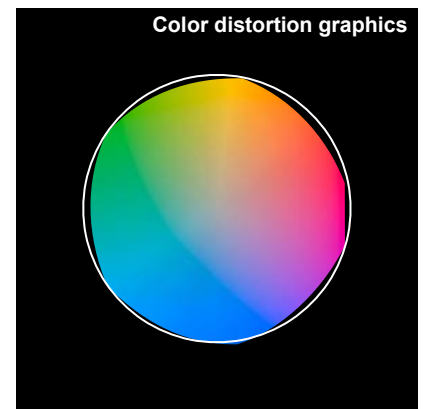
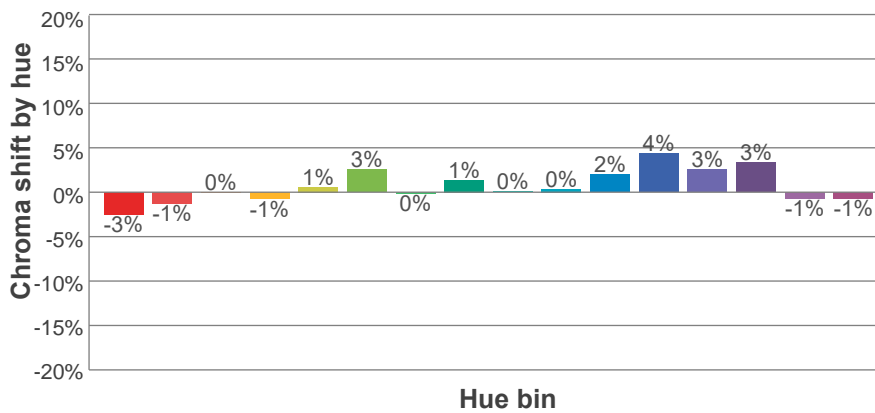
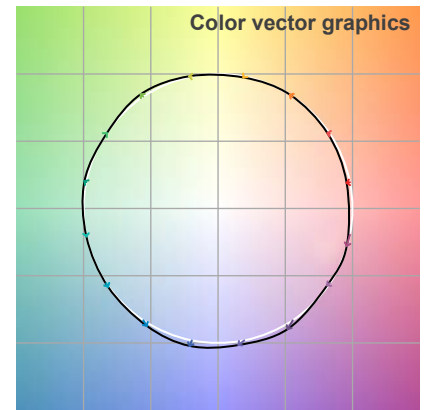
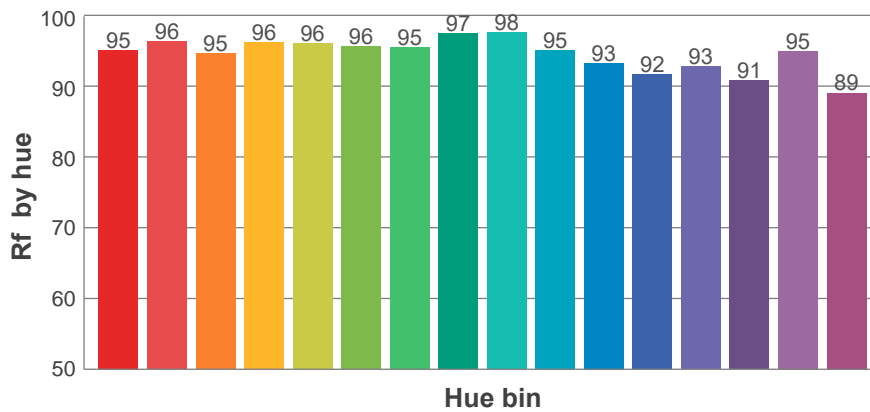
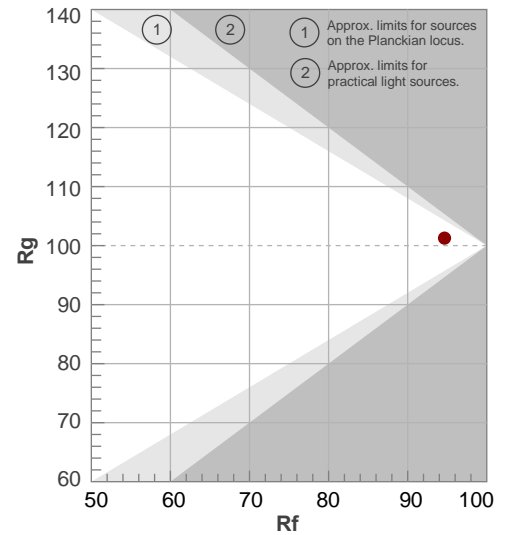
Rf 94.7

Fidelity index Rf

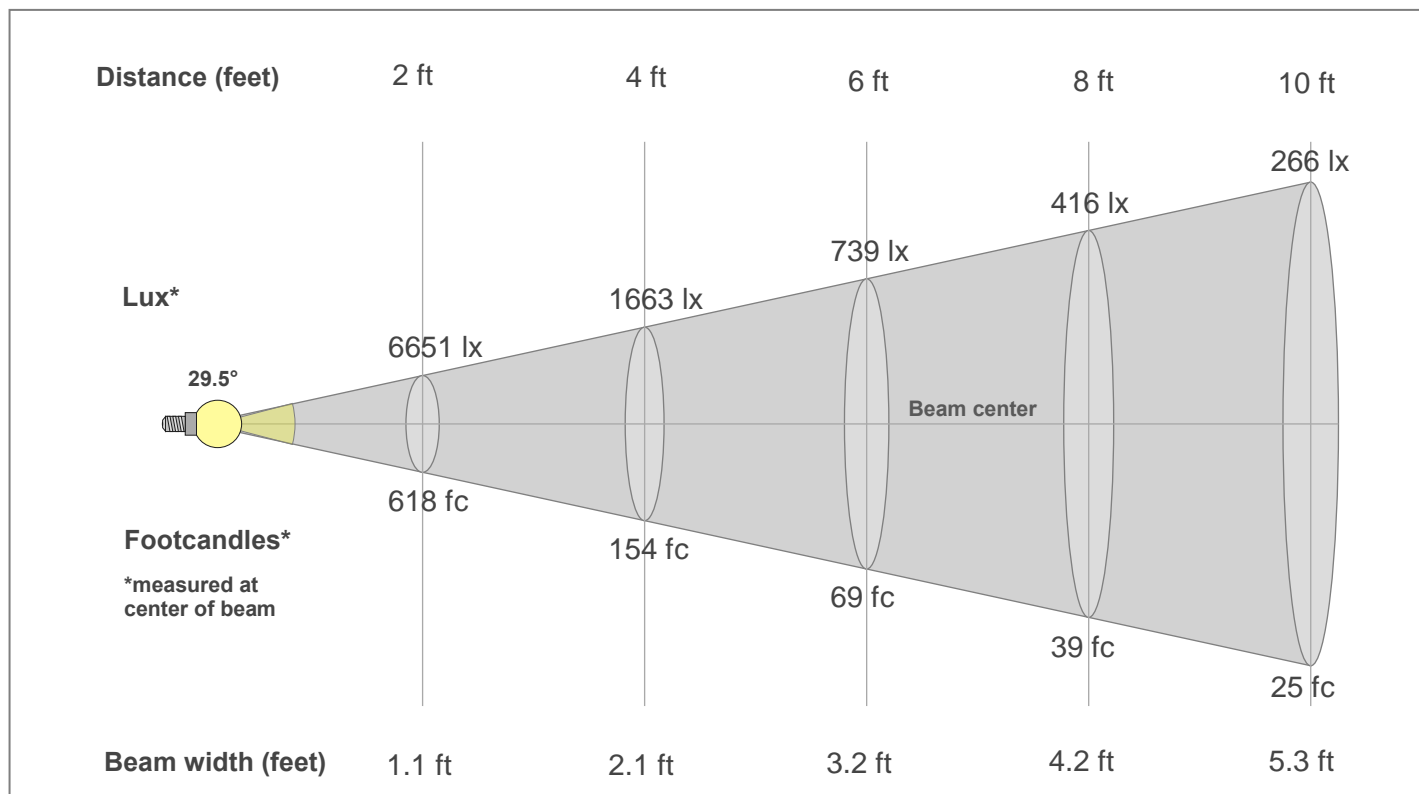
Rg 101.3

Gamut index Rg

Hue Bin	R _f	Shifts (%)	
		Chroma	Hue
1	95	-3%	0%
2	96	-1%	1%
3	95	0%	3%
4	96	-1%	0%
5	96	1%	2%
6	96	3%	1%
7	95	0%	-1%
8	97	1%	-1%
9	98	0%	1%
10	95	0%	3%
11	93	2%	4%
12	92	4%	-1%
13	93	3%	-5%
14	91	3%	-7%
15	95	-1%	-2%
16	89	-1%	-9%



Beam Details



Beam Intensities from 1-20m

1m	2m	3m	4m	5m	6m	7m	8m	9m	10m	11m	12m	13m	14m	15m	16m	17m	18m	19m	20m
3.3ft	6.6ft	9.8ft	13.1ft	16.4ft	19.7ft	23ft	26.2ft	29.5ft	32.8ft	36.1ft	39.4ft	42.7ft	45.9ft	49.2ft	52.5ft	55.8ft	59.1ft	62.3ft	65.6ft
2471lx	618lx	275lx	154lx	99lx	69lx	50lx	39lx	31lx	25lx	20lx	17lx	15lx	13lx	11lx	10lx	9lx	8lx	7lx	6lx
229.6fc	57.4fc	25.5fc	14.4fc	9.2fc	6.4fc	4.7fc	3.6fc	2.8fc	2.3fc	1.9fc	1.6fc	1.4fc	1.2fc	1fc	0.9fc	0.8fc	0.7fc	0.6fc	0.6fc

Intensities in 0° c-plane

0°	2°	4°	6°	8°	10°	12°	14°	16°	18°	20°	22°	24°	26°	28°	30°	32°	34°	36°	38°
2471	2443	2348	2199	2015	1803	1567	1324	1086	871	684	530	411	319	251	199	157	123	92	65
100%	99%	95%	89%	82%	73%	63%	54%	44%	35%	28%	21%	17%	13%	10%	8%	6%	5%	4%	3%

Intensities in 90° c-plane

0°	2°	4°	6°	8°	10°	12°	14°	16°	18°	20°	22°	24°	26°	28°	30°	32°	34°	36°	38°
2471	2437	2344	2196	2015	1802	1568	1328	1095	882	697	544	427	334	265	211	168	131	99	71
100%	99%	95%	89%	82%	73%	63%	54%	44%	36%	28%	22%	17%	13%	11%	9%	7%	5%	4%	3%

Intensities in 180° c-plane

0°	2°	4°	6°	8°	10°	12°	14°	16°	18°	20°	22°	24°	26°	28°	30°	32°	34°	36°	38°
2471	2443	2348	2199	2015	1803	1567	1324	1086	871	684	530	411	319	251	199	157	123	92	65
100%	99%	95%	89%	82%	73%	63%	54%	44%	35%	28%	21%	17%	13%	10%	8%	6%	5%	4%	3%

Intensities in 270° c-plane

0°	2°	4°	6°	8°	10°	12°	14°	16°	18°	20°	22°	24°	26°	28°	30°	32°	34°	36°	38°
2471	2437	2344	2196	2015	1802	1568	1328	1095	882	697	544	427	334	265	211	168	131	99	71
100%	99%	95%	89%	82%	73%	63%	54%	44%	36%	28%	22%	17%	13%	11%	9%	7%	5%	4%	3%

Beam angle 50%	Field angle 10%	Cut-off angle 2.5%	Intensity ratio in 120°	Intensity ratio in 90°
29.5°	56.7°	77°	99.5%	98.7%