

## Photometric / Colorimetric / Electric Report

Fixture Model:

**805-K5-WD-2-15-PR1-8.5-350-FR-LG-P-1-WH-NL**

Trim Model:

**FR-LG-P-1-WH/NL**

Date:

**7/5/2023**



Light efficiency:

**66 Lumen/Watt**

Light quality:

**CRI: 97.0**

Color temperature:

**2849 K**

CIE 1931:

**x: 0.445  
y: 0.402**

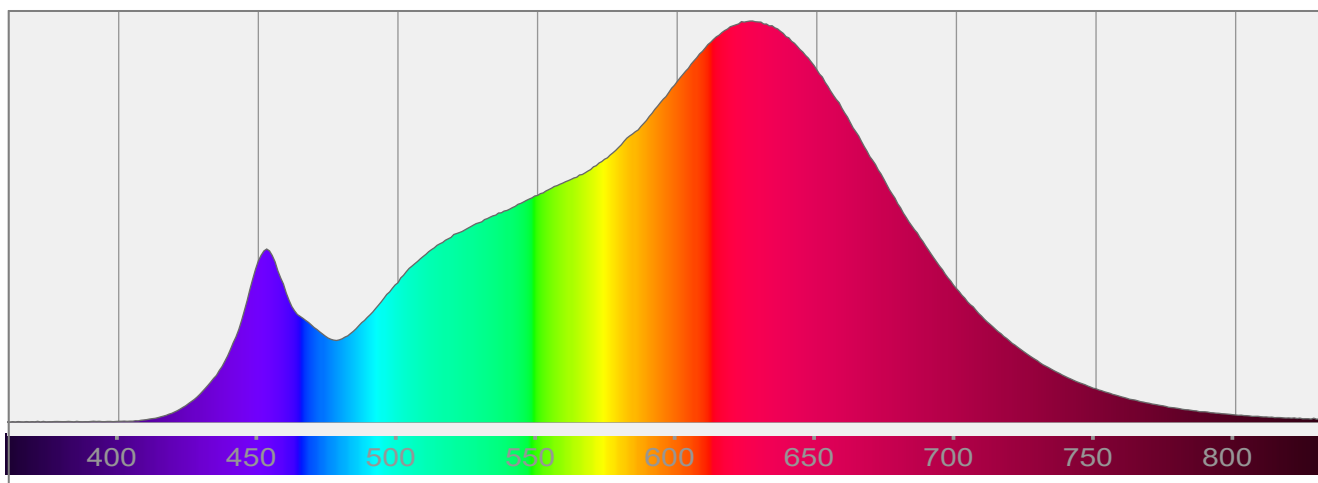
**Output: 975 lm**

**Peak: 4083 cd**

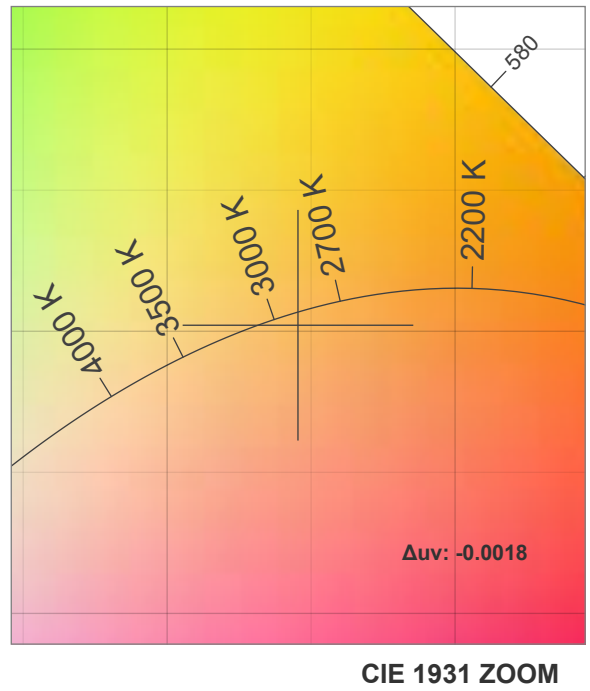
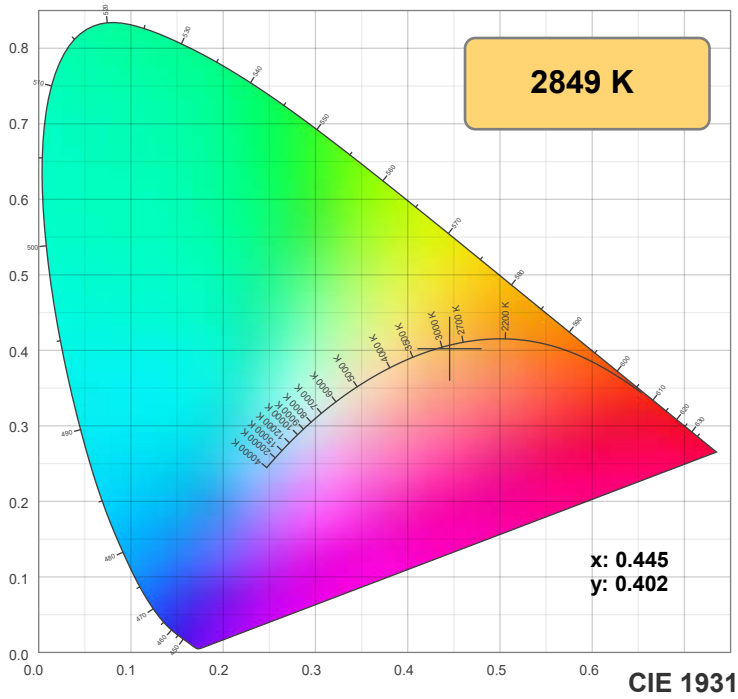
**Power: 14.9 W**

**PF: 0.99**

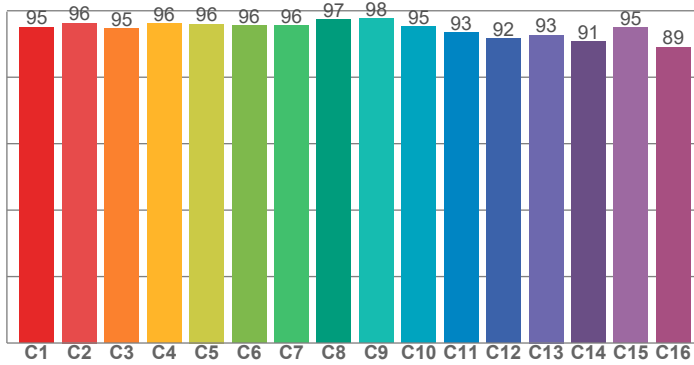
Spectra:



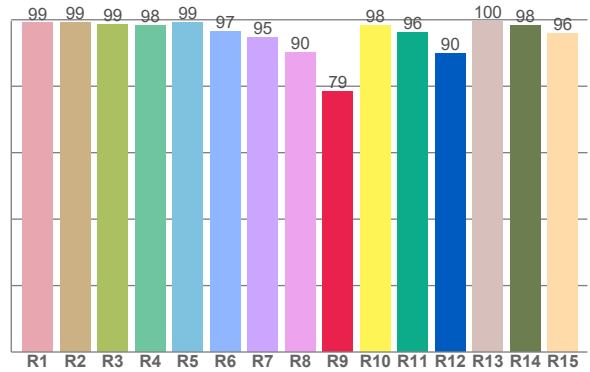
## Color Details



**TM-30: 94.7**



**CRI: 97.0 (R1-R8)**



**CRI R Values:**

R1	R2	R3	R4	R5	R6	R7	R8	R9	R10	R11	R12	R13	R14	R15
99.0	99.3	98.6	98.3	99.3	96.5	94.7	90.2	78.5	98.3	96.1	89.8	99.6	98.3	95.8

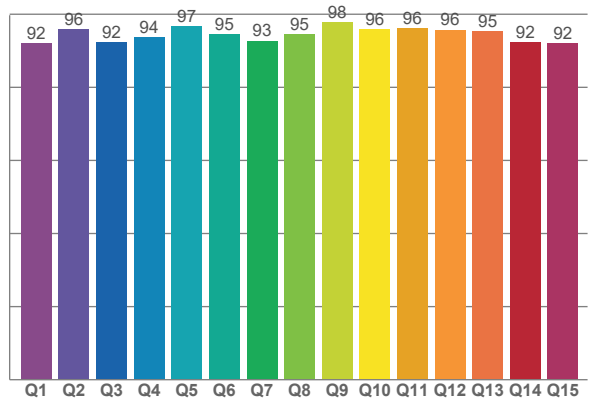
**TM30 C Values:**

C1	C2	C3	C4	C5	C6	C7	C8	C9	C10	C11	C12	C13	C14	C15	C16
95.1	96.3	94.6	96.2	96.0	95.6	95.5	97.4	97.6	95.2	93.4	91.7	92.7	90.7	94.9	89.1

**CQS Q values:**

Q1	Q2	Q3	Q4	Q5	Q6	Q7	Q8	Q9	Q10	Q11	Q12	Q13	Q14	Q15
91.9	96.0	92.2	93.8	96.8	94.6	92.8	94.5	97.7	95.8	96.1	95.8	95.3	92.2	92.0

**CQS: 94.1**



**Color Parameters:**

CCT	CRI	CRI R9	TM30 Rf	TM30 Rg	CQS	x	y	u	v	$\Delta uv$
2849 K	97.0	78.5	94.7	101.3	94.1	0.445	0.402	0.257	0.348	-0.0018

# TM-30 Details

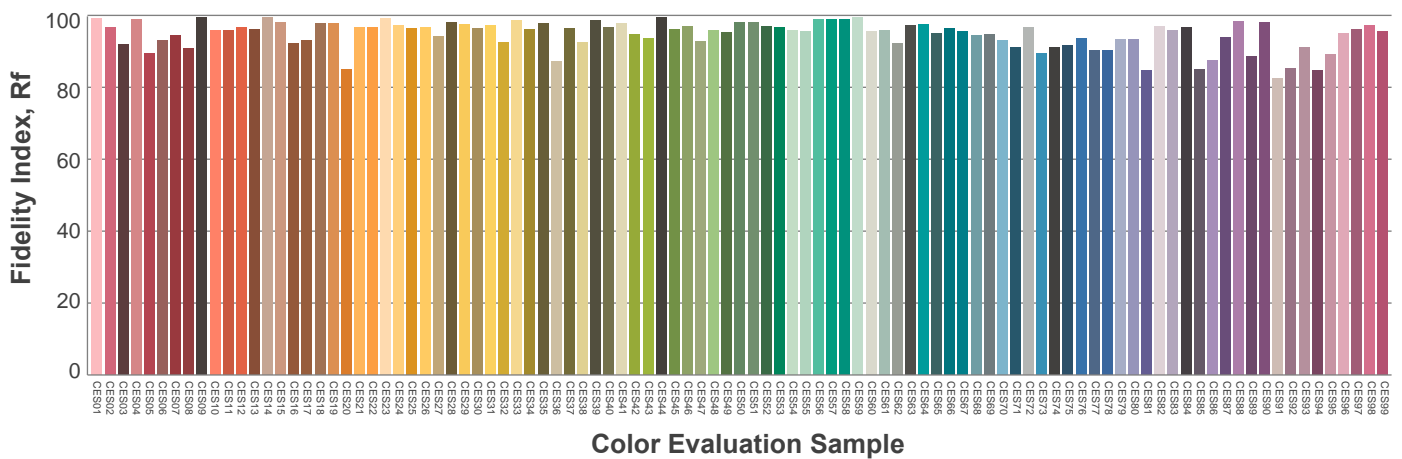
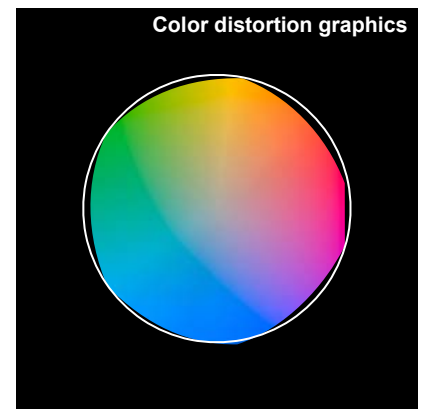
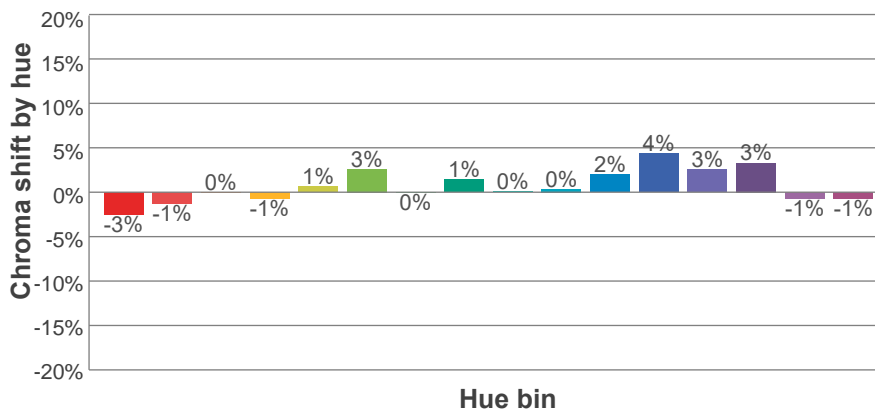
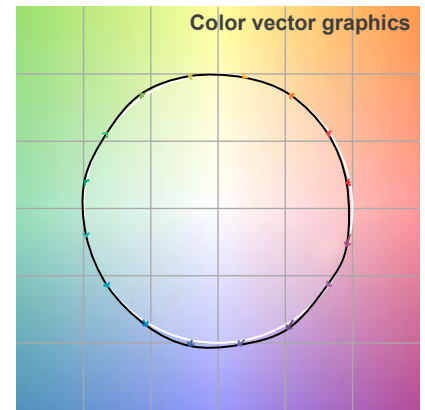
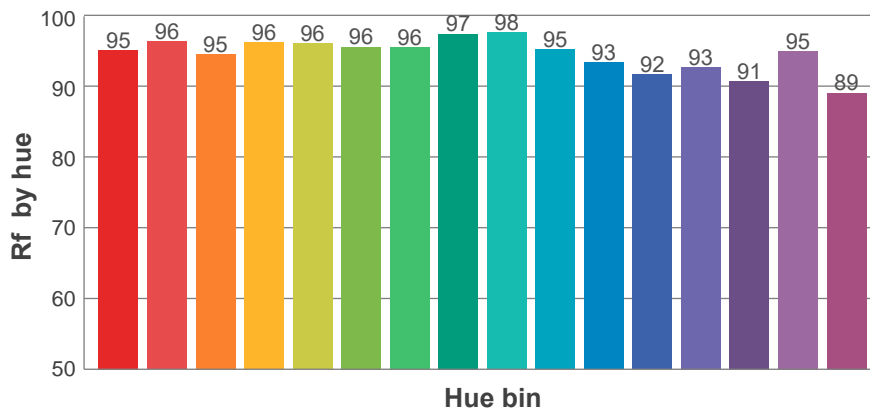
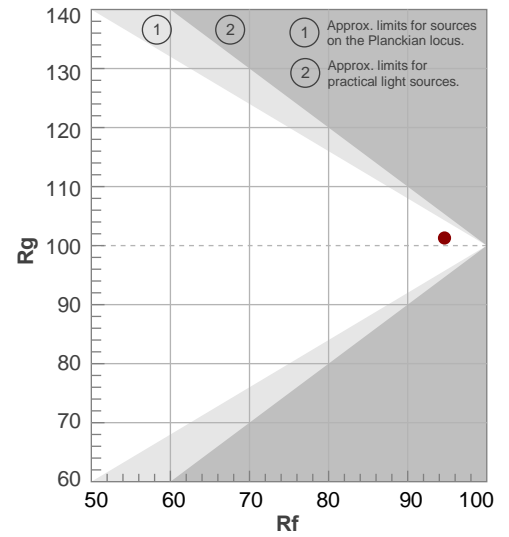
**Rf 94.7**

Fidelity index Rf

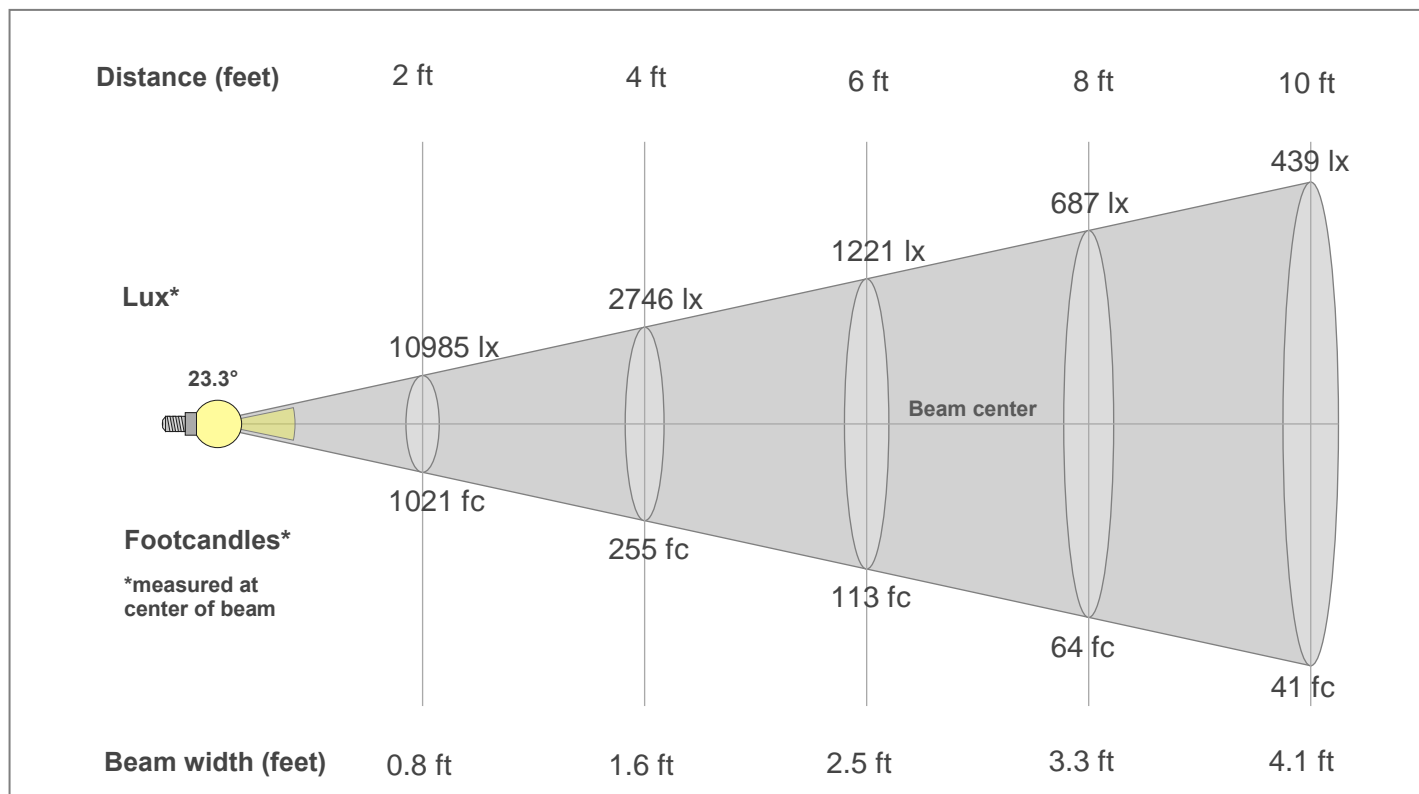
**Rg 101.3**

Gamut index Rg

Hue Bin	R <sub>f</sub>	Shifts (%)	
		Chroma	Hue
1	95	-3%	0%
2	96	-1%	1%
3	95	0%	3%
4	96	-1%	0%
5	96	1%	2%
6	96	3%	1%
7	96	0%	-1%
8	97	1%	-1%
9	98	0%	1%
10	95	0%	3%
11	93	2%	4%
12	92	4%	-1%
13	93	3%	-5%
14	91	3%	-7%
15	95	-1%	-3%
16	89	-1%	-9%



## Beam Details



### Beam Intensities from 1-20m

1m	2m	3m	4m	5m	6m	7m	8m	9m	10m	11m	12m	13m	14m	15m	16m	17m	18m	19m	20m
3.3ft	6.6ft	9.8ft	13.1ft	16.4ft	19.7ft	23ft	26.2ft	29.5ft	32.8ft	36.1ft	39.4ft	42.7ft	45.9ft	49.2ft	52.5ft	55.8ft	59.1ft	62.3ft	65.6ft
4082lx	1021lx	454lx	255lx	163lx	113lx	83lx	64lx	50lx	41lx	34lx	28lx	24lx	21lx	18lx	16lx	14lx	13lx	11lx	10lx
379.3fc	94.8fc	42.1fc	23.7fc	15.2fc	10.5fc	7.7fc	5.9fc	4.7fc	3.8fc	3.1fc	2.6fc	2.2fc	1.9fc	1.7fc	1.5fc	1.3fc	1.2fc	1.1fc	0.9fc

### Intensities in 0° c-plane

0°	2°	4°	6°	8°	10°	12°	14°	16°	18°	20°	22°	24°	26°	28°	30°	32°	34°	36°	38°
4082	4016	3825	3483	3024	2495	1965	1502	1143	879	679	524	406	316	251	200	160	128	102	84
100%	98%	94%	85%	74%	61%	48%	37%	28%	22%	17%	13%	10%	8%	6%	5%	4%	3%	3%	2%

### Intensities in 90° c-plane

0°	2°	4°	6°	8°	10°	12°	14°	16°	18°	20°	22°	24°	26°	28°	30°	32°	34°	36°	38°
4082	4012	3804	3441	2966	2444	1942	1506	1167	904	703	547	426	333	263	209	166	132	105	85
100%	98%	93%	84%	73%	60%	48%	37%	29%	22%	17%	13%	10%	8%	6%	5%	4%	3%	3%	2%

### Intensities in 180° c-plane

0°	2°	4°	6°	8°	10°	12°	14°	16°	18°	20°	22°	24°	26°	28°	30°	32°	34°	36°	38°
4082	4016	3825	3483	3024	2495	1965	1502	1143	879	679	524	406	316	251	200	160	128	102	84
100%	98%	94%	85%	74%	61%	48%	37%	28%	22%	17%	13%	10%	8%	6%	5%	4%	3%	3%	2%

### Intensities in 270° c-plane

0°	2°	4°	6°	8°	10°	12°	14°	16°	18°	20°	22°	24°	26°	28°	30°	32°	34°	36°	38°
4082	4012	3804	3441	2966	2444	1942	1506	1167	904	703	547	426	333	263	209	166	132	105	85
100%	98%	93%	84%	73%	60%	48%	37%	29%	22%	17%	13%	10%	8%	6%	5%	4%	3%	3%	2%

Beam angle 50%	Field angle 10%	Cut-off angle 2.5%	Intensity ratio in 120°	Intensity ratio in 90°
23.3°	48.3°	72.2°	99.5%	97.7%