

## Photometric / Colorimetric / Electric Report

Fixture Model:

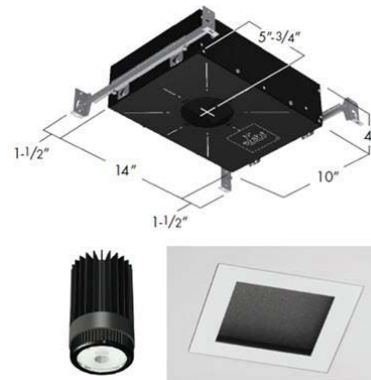
**804S-K2S-WD-40-DIM1-8-350-FS-LG-P-1-WH-NL**

Trim Model:

**FS-LG-P-1-WH-NL**

Date:

**4/8/2022**



Light efficiency:

**61 Lumen/Watt**

Light quality:

**CRI: 96.8**

Color temperature:

**3102 K**

CIE 1931:

**x: 0.429  
y: 0.399**

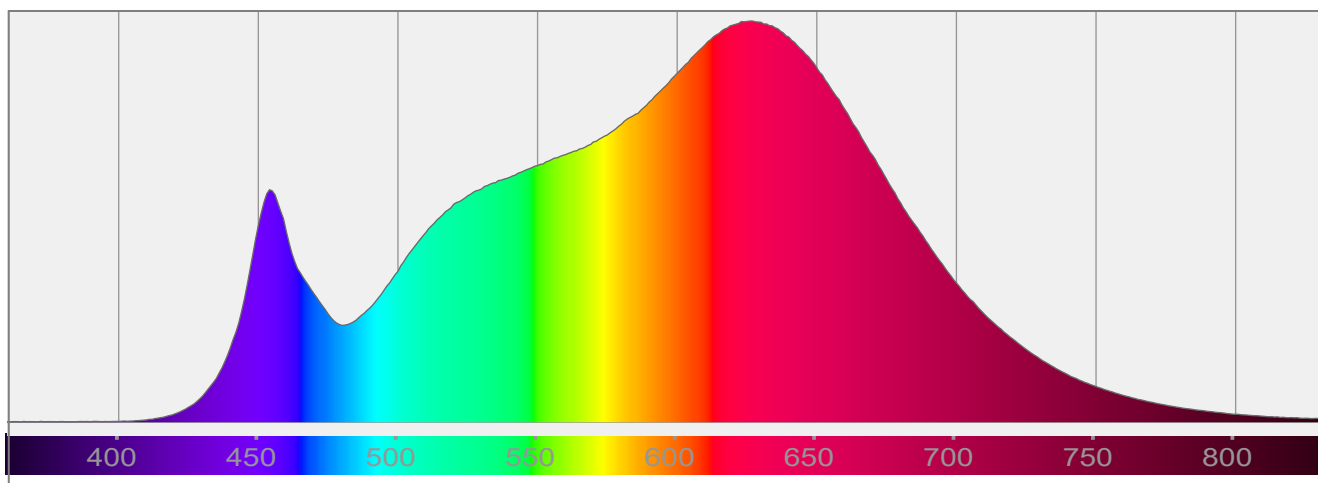
**Output: 897 lm**

**Peak: 1710 cd**

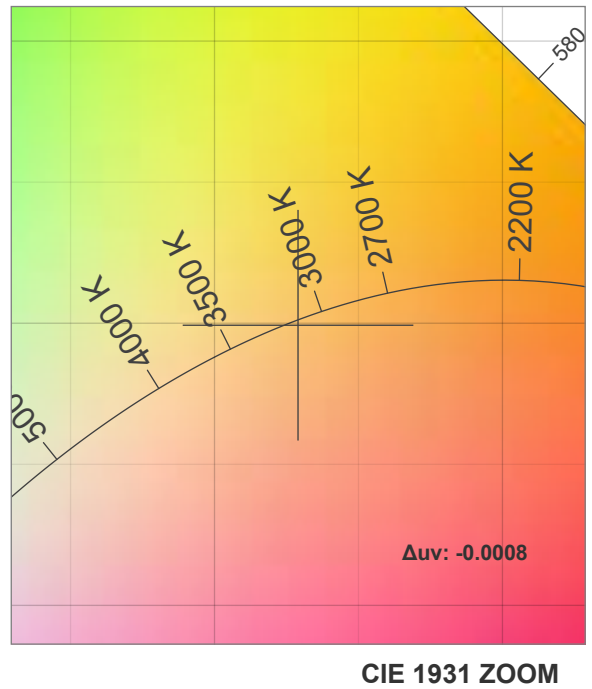
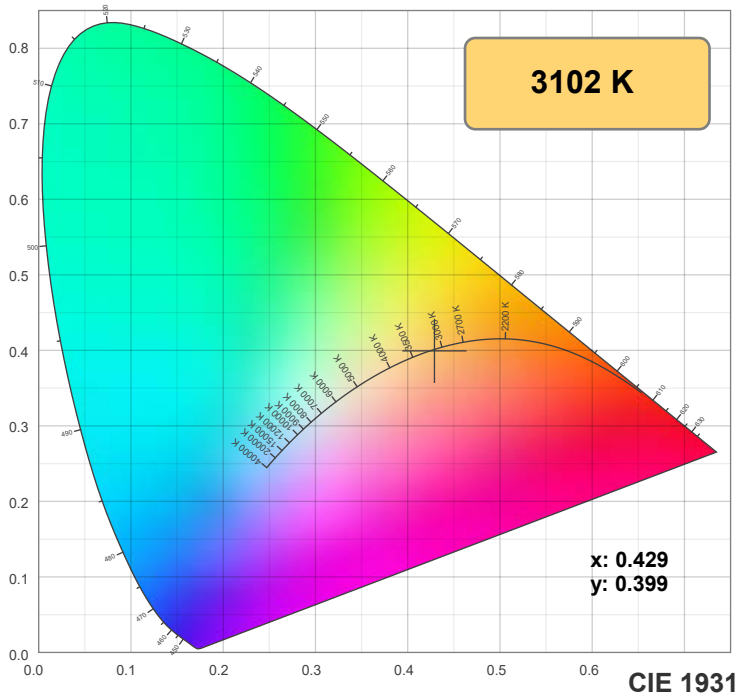
**Power: 14.6 W**

**PF: 1.0**

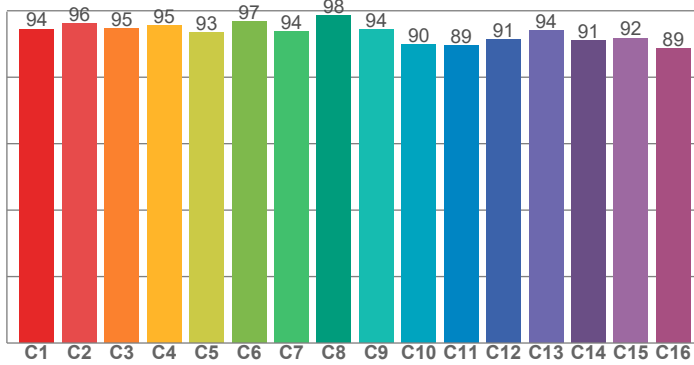
Spectra:



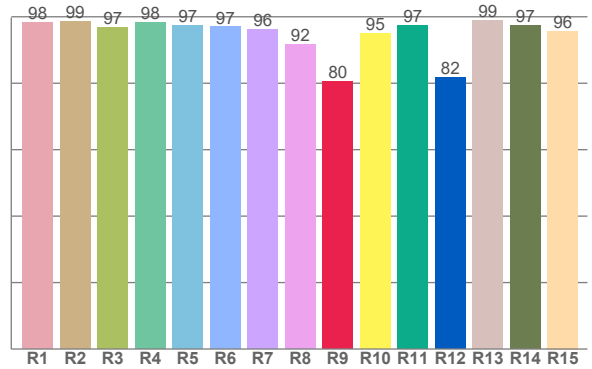
## Color Details



**TM-30: 93.4**



**CRI: 96.8 (R1-R8)**



**CRI R Values:**

R1	R2	R3	R4	R5	R6	R7	R8	R9	R10	R11	R12	R13	R14	R15
98.3	98.6	96.9	98.2	97.5	96.9	96.1	91.7	80.4	95.1	97.5	81.7	98.8	97.3	95.7

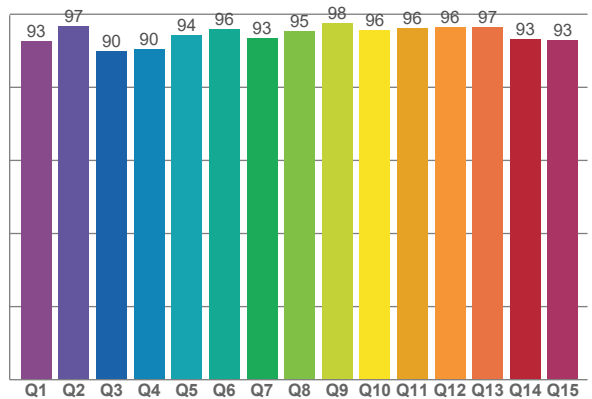
**TM30 C Values:**

C1	C2	C3	C4	C5	C6	C7	C8	C9	C10	C11	C12	C13	C14	C15	C16
94.5	96.1	94.6	95.5	93.4	96.7	93.8	98.4	94.4	89.9	89.5	91.2	94.1	90.9	91.8	88.5

**CQS Q values:**

Q1	Q2	Q3	Q4	Q5	Q6	Q7	Q8	Q9	Q10	Q11	Q12	Q13	Q14	Q15
92.6	96.8	90.0	90.5	94.3	95.9	93.5	95.3	97.5	95.6	96.1	96.4	96.5	93.2	93.0

**CQS: 93.9**



**Color Parameters:**

CCT	CRI	CRI R9	TM30 Rf	TM30 Rg	CQS	x	y	u	v	Δuv
3102 K	96.8	80.4	93.4	100.5	93.9	0.429	0.399	0.247	0.346	-0.0008

# TM-30 Details

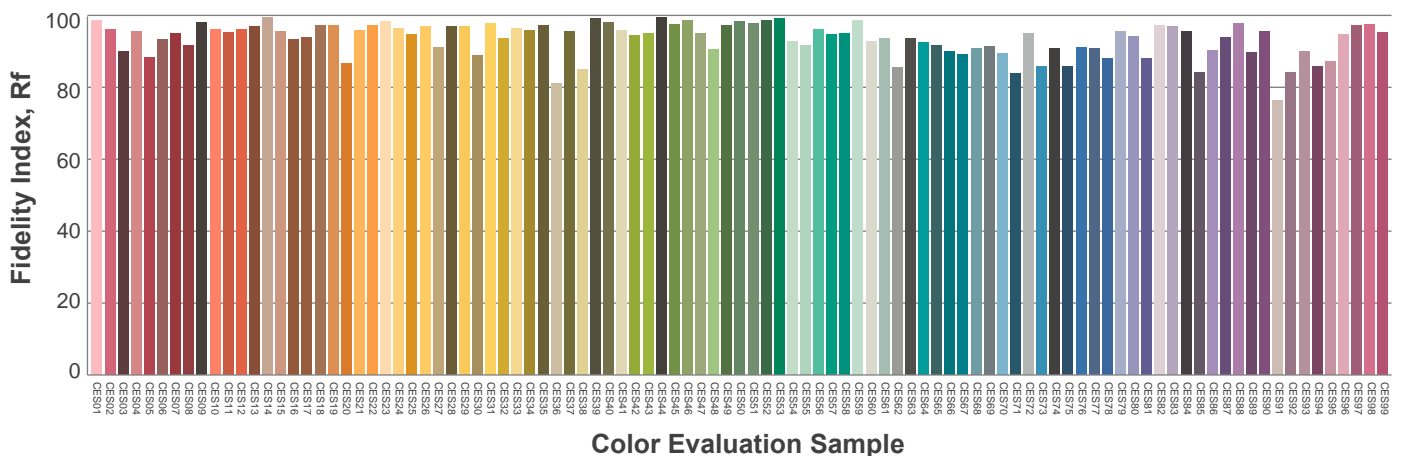
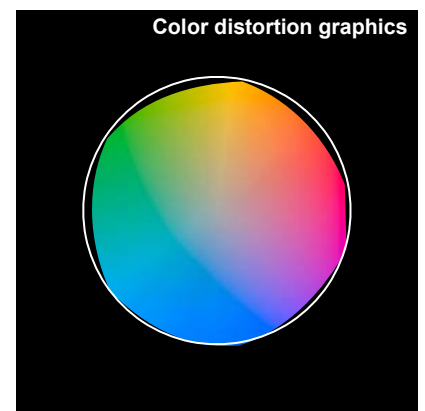
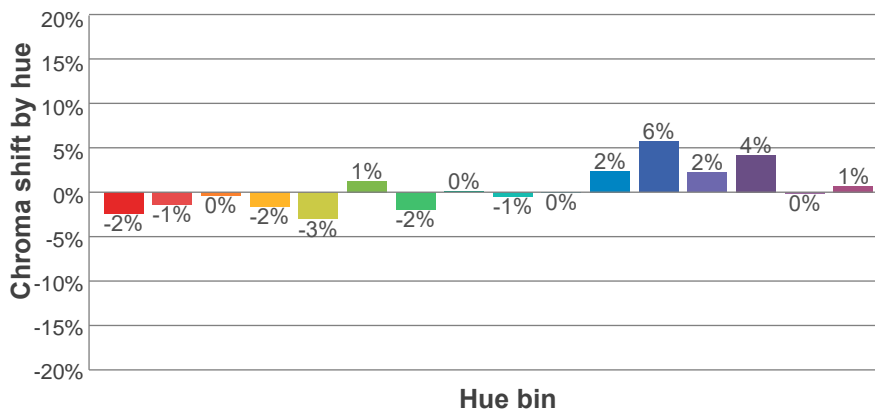
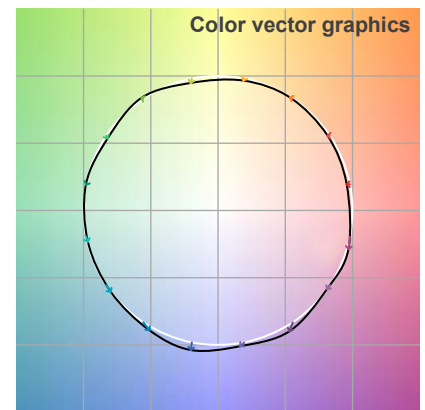
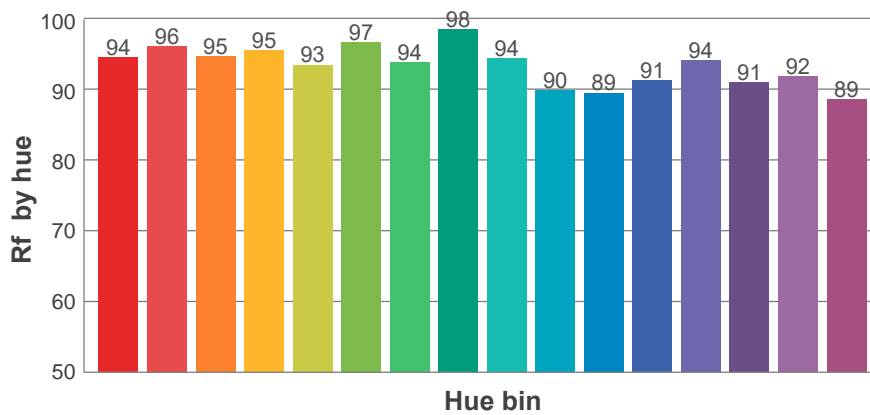
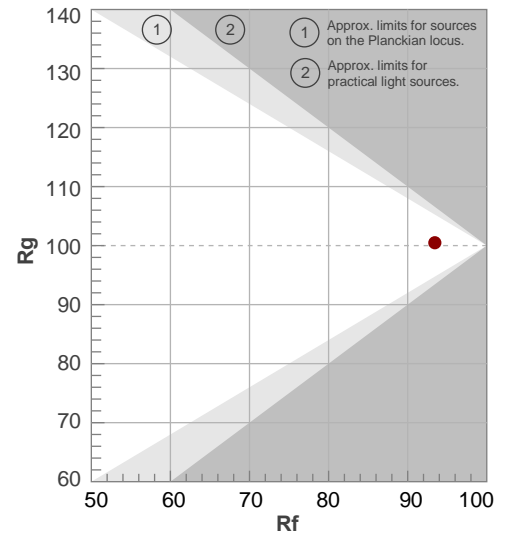
**Rf 93.4**

Fidelity index Rf

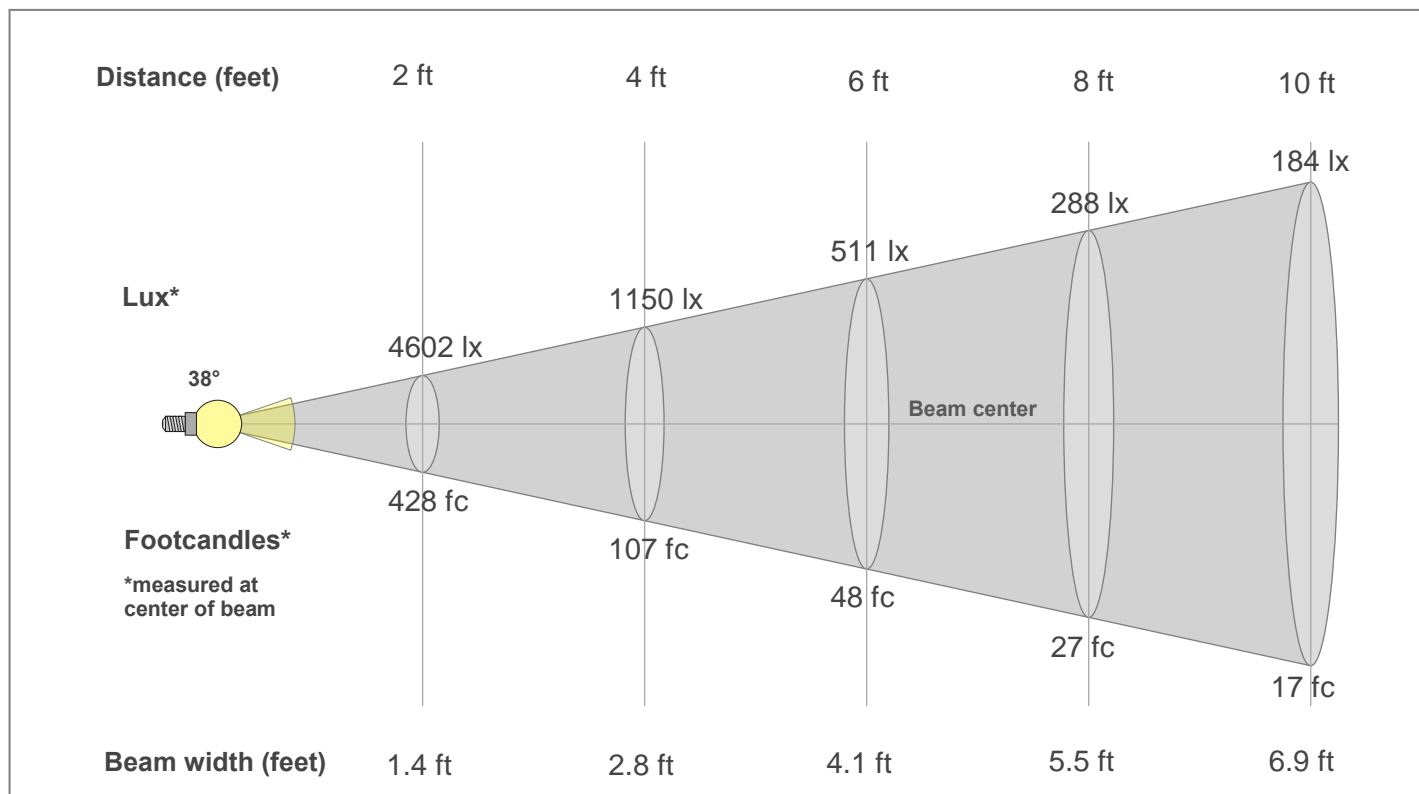
**Rg 100.5**

Gamut index Rg

Hue Bin	R <sub>f</sub>	Shifts (%)	
		Chroma	Hue
1	94	-2%	0%
2	96	-1%	1%
3	95	0%	2%
4	95	-2%	0%
5	93	-3%	1%
6	97	1%	1%
7	94	-2%	1%
8	98	0%	0%
9	94	-1%	4%
10	90	0%	6%
11	89	2%	7%
12	91	6%	0%
13	94	2%	-4%
14	91	4%	-6%
15	92	0%	-4%
16	89	1%	-9%



## Beam Details



### Beam Intensities from 1-20m

1m	2m	3m	4m	5m	6m	7m	8m	9m	10m	11m	12m	13m	14m	15m	16m	17m	18m	19m	20m
3.3ft	6.6ft	9.8ft	13.1ft	16.4ft	19.7ft	23ft	26.2ft	29.5ft	32.8ft	36.1ft	39.4ft	42.7ft	45.9ft	49.2ft	52.5ft	55.8ft	59.1ft	62.3ft	65.6ft
1710lx	428lx	190lx	107lx	68lx	48lx	35lx	27lx	21lx	17lx	14lx	12lx	10lx	9lx	8lx	7lx	6lx	5lx	5lx	4lx
158.9fc	39.7fc	17.7fc	9.9fc	6.4fc	4.4fc	3.2fc	2.5fc	2fc	1.6fc	1.3fc	1.1fc	0.9fc	0.8fc	0.7fc	0.6fc	0.5fc	0.5fc	0.4fc	0.4fc

### Intensities in 0° c-plane

0°	2°	4°	6°	8°	10°	12°	14°	16°	18°	20°	22°	24°	26°	28°	30°	32°	34°	36°	38°
1710	1700	1662	1602	1518	1416	1304	1180	1051	921	793	673	565	470	390	323	265	216	176	143
100%	99%	97%	94%	89%	83%	76%	69%	61%	54%	46%	39%	33%	27%	23%	19%	16%	13%	10%	8%

### Intensities in 90° c-plane

0°	2°	4°	6°	8°	10°	12°	14°	16°	18°	20°	22°	24°	26°	28°	30°	32°	34°	36°	38°
1710	1700	1662	1602	1518	1416	1304	1180	1051	921	793	673	565	470	390	323	265	216	176	143
100%	99%	97%	94%	89%	83%	76%	69%	61%	54%	46%	39%	33%	27%	23%	19%	16%	13%	10%	8%

### Intensities in 180° c-plane

0°	2°	4°	6°	8°	10°	12°	14°	16°	18°	20°	22°	24°	26°	28°	30°	32°	34°	36°	38°
1710	1700	1662	1602	1518	1416	1304	1180	1051	921	793	673	565	470	390	323	265	216	176	143
100%	99%	97%	94%	89%	83%	76%	69%	61%	54%	46%	39%	33%	27%	23%	19%	16%	13%	10%	8%

### Intensities in 270° c-plane

0°	2°	4°	6°	8°	10°	12°	14°	16°	18°	20°	22°	24°	26°	28°	30°	32°	34°	36°	38°
1710	1700	1662	1602	1518	1416	1304	1180	1051	921	793	673	565	470	390	323	265	216	176	143
100%	99%	97%	94%	89%	83%	76%	69%	61%	54%	46%	39%	33%	27%	23%	19%	16%	13%	10%	8%

Beam angle 50%	Field angle 10%	Cut-off angle 2.5%	Intensity ratio in 120°	Intensity ratio in 90°
38°	72.6°	98.1°	99.2%	94.9%