

Photometric / Colorimetric / Electric Report

Fixture Model:

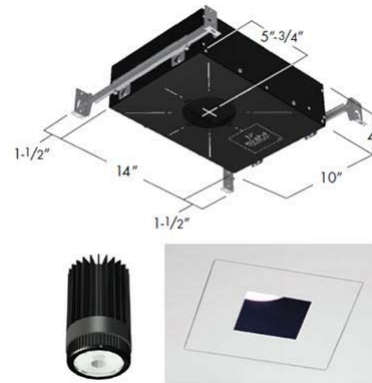
804S-K2S-WD-4-25-PR1-8-350-FS-P-1-WH

Trim Model:

FS-P-1-WH

Date:

8/6/2024



Light efficiency:

54 Lumen/Watt

Light quality:

CRI: 96.7

Color temperature:

3002 K

CIE 1931:

**x: 0.435
y: 0.400**

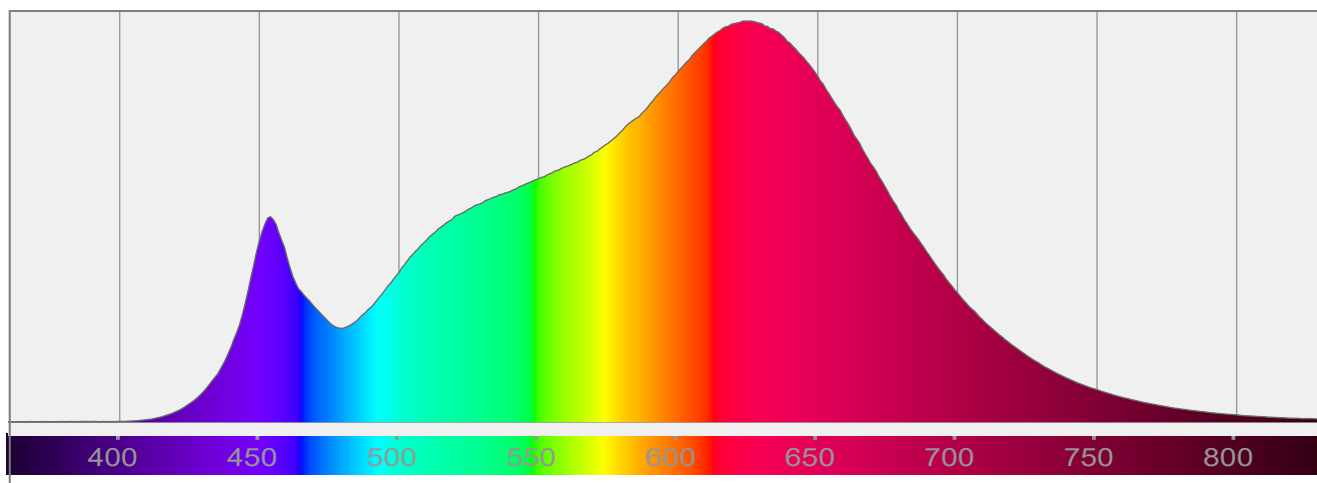
Output: 788 lm

Peak: 2672 cd

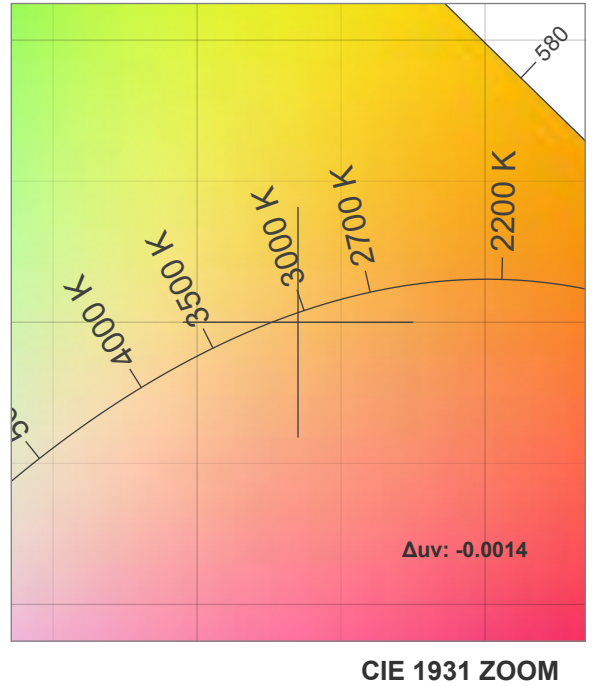
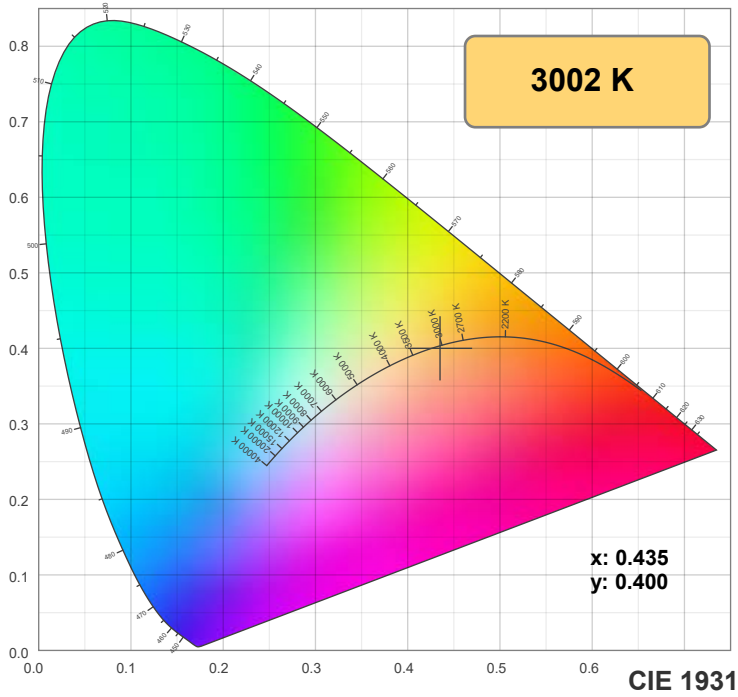
Power: 14.5 W

PF: 0.99

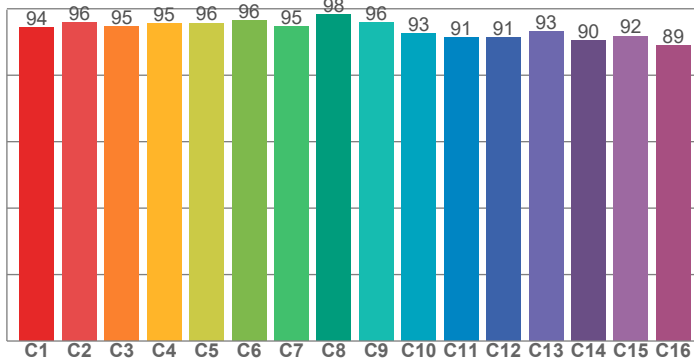
Spectra:



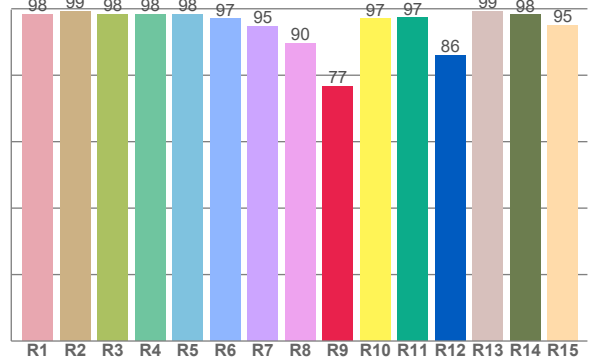
Color Details



TM-30: 94.0



CRI: 96.7 (R1-R8)



CRI R Values:

R1	R2	R3	R4	R5	R6	R7	R8	R9	R10	R11	R12	R13	R14	R15
98.4	99.1	98.3	98.3	98.2	96.9	94.7	89.6	76.6	96.9	97.2	85.9	99.1	98.1	95.1

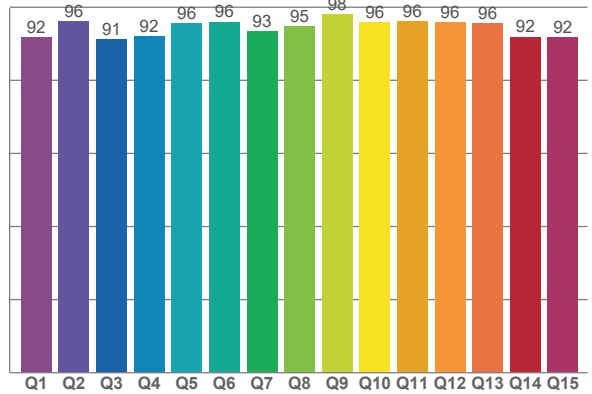
TM30 C Values:

C1	C2	C3	C4	C5	C6	C7	C8	C9	C10	C11	C12	C13	C14	C15	C16
94.3	95.8	94.5	95.5	95.7	96.4	94.7	98.3	95.9	92.6	91.4	91.4	93.0	90.5	91.8	88.8

CQS Q values:

Q1	Q2	Q3	Q4	Q5	Q6	Q7	Q8	Q9	Q10	Q11	Q12	Q13	Q14	Q15
91.8	96.3	91.3	92.2	95.5	96.0	93.5	94.9	98.2	95.8	96.1	95.9	95.6	91.9	91.8

CQS: 93.9



Color Parameters:

CCT	CRI	CRI R9	TM30 Rf	TM30 Rg	CQS	x	y	u	v	Δuv
3002 K	96.7	76.6	94.0	100.6	93.9	0.435	0.400	0.251	0.346	-0.0014

TM-30 Details

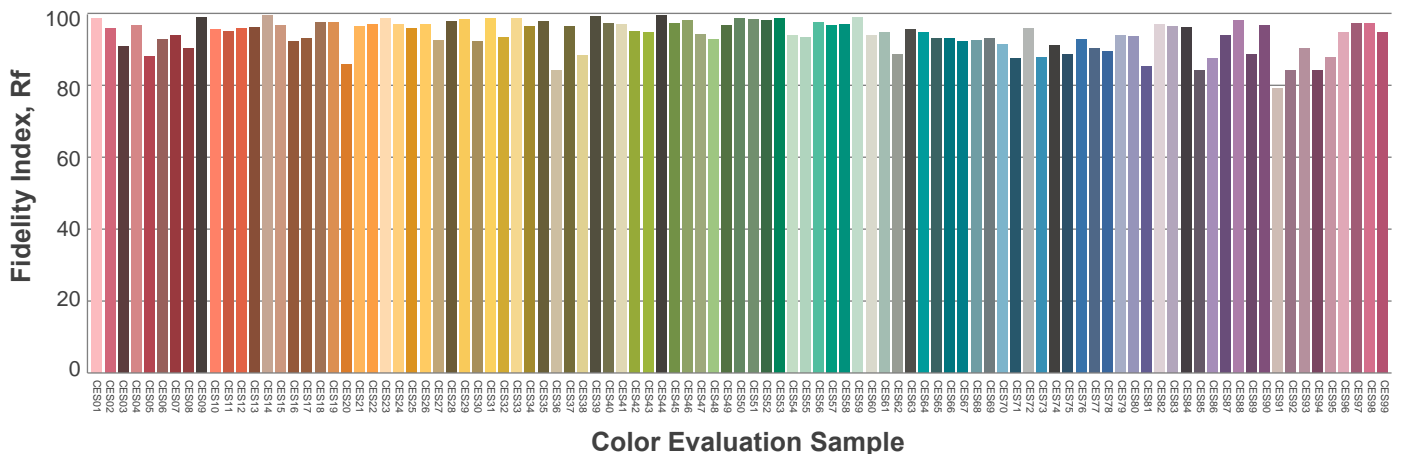
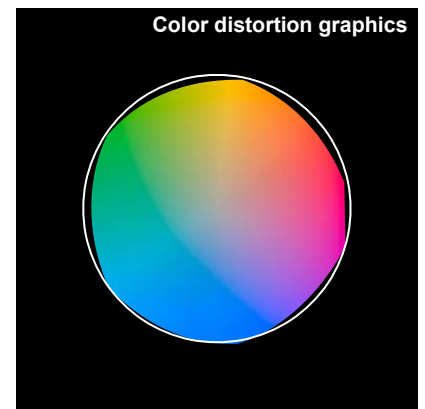
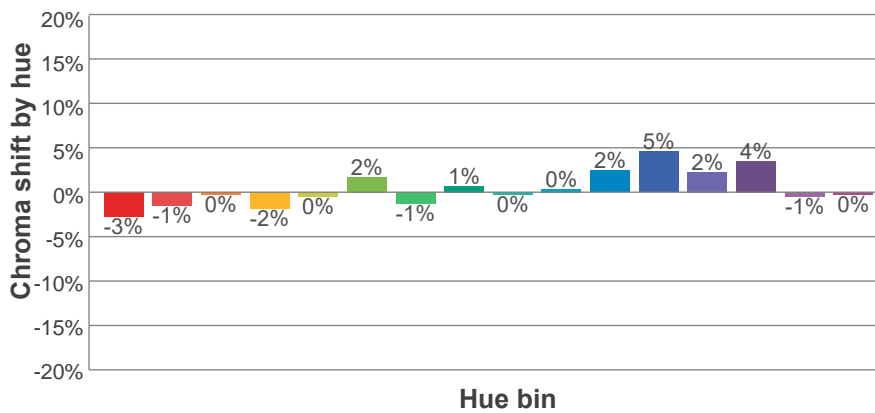
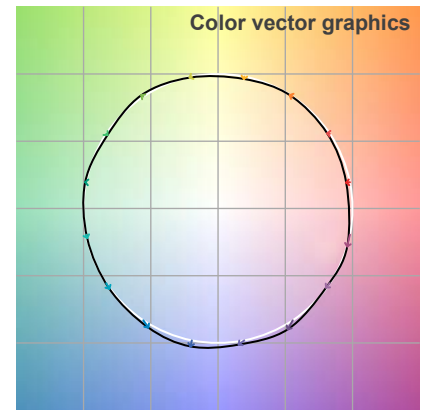
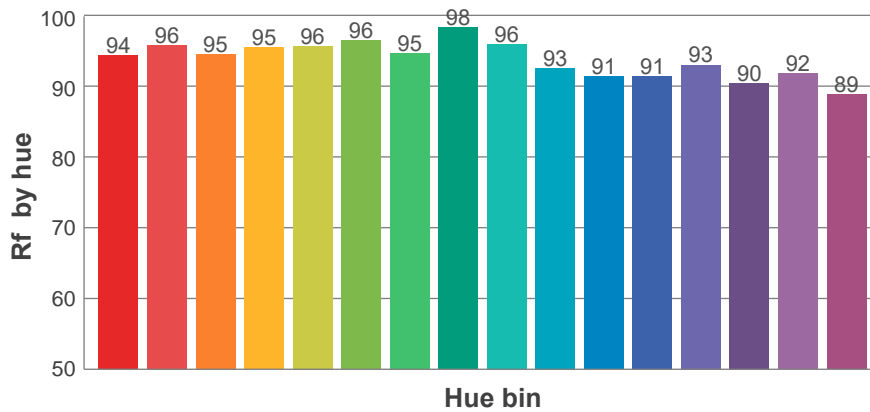
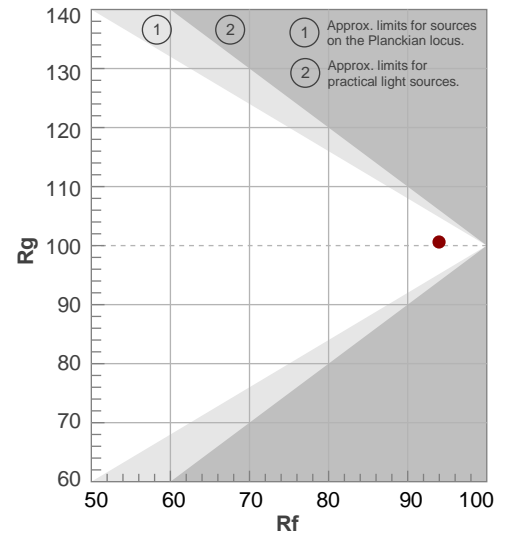
Rf 94.0

Fidelity index Rf

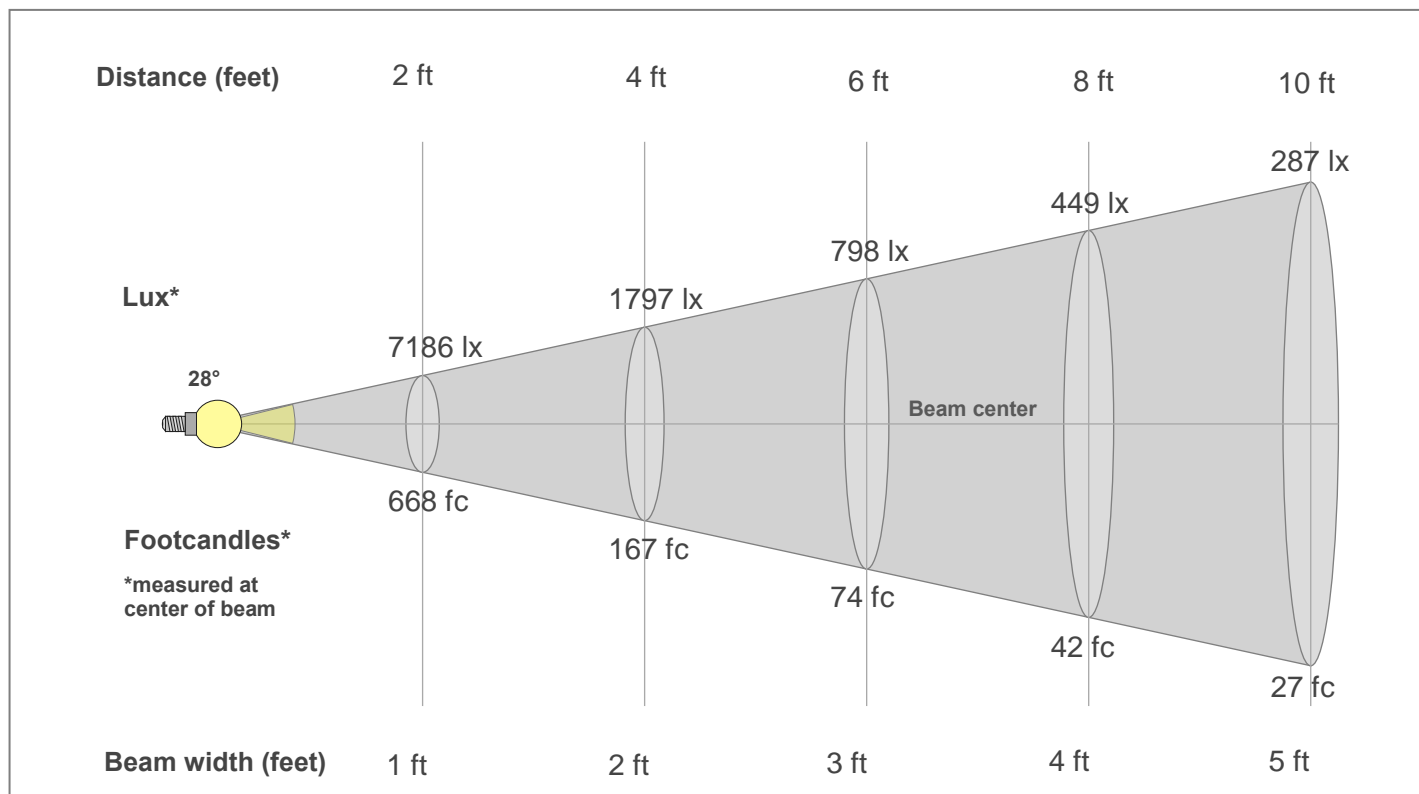
Rg 100.6

Gamut index Rg

Hue Bin	R _f	Shifts (%)	
		Chroma	Hue
1	94	-3%	0%
2	96	-1%	1%
3	95	0%	3%
4	95	-2%	0%
5	96	0%	2%
6	96	2%	1%
7	95	-1%	0%
8	98	1%	0%
9	96	0%	3%
10	93	0%	5%
11	91	2%	6%
12	91	5%	0%
13	93	2%	-5%
14	90	4%	-7%
15	92	-1%	-4%
16	89	0%	-9%



Beam Details



Beam Intensities from 1-20m

1m	2m	3m	4m	5m	6m	7m	8m	9m	10m	11m	12m	13m	14m	15m	16m	17m	18m	19m	20m
3.3ft	6.6ft	9.8ft	13.1ft	16.4ft	19.7ft	23ft	26.2ft	29.5ft	32.8ft	36.1ft	39.4ft	42.7ft	45.9ft	49.2ft	52.5ft	55.8ft	59.1ft	62.3ft	65.6ft
2670lx	668lx	297lx	167lx	107lx	74lx	54lx	42lx	33lx	27lx	22lx	19lx	16lx	14lx	12lx	10lx	9lx	8lx	7lx	7lx
248.1fc	62fc	27.6fc	15.5fc	9.9fc	6.9fc	5.1fc	3.9fc	3.1fc	2.5fc	2.1fc	1.7fc	1.5fc	1.3fc	1.1fc	1fc	0.9fc	0.8fc	0.7fc	0.6fc

Intensities in 0° c-plane

0°	2°	4°	6°	8°	10°	12°	14°	16°	18°	20°	22°	24°	26°	28°	30°	32°	34°	36°	38°
2670	2635	2521	2341	2120	1871	1608	1341	1090	870	678	522	399	308	240	188	147	112	83	59
100%	99%	94%	88%	79%	70%	60%	50%	41%	33%	25%	20%	15%	12%	9%	7%	5%	4%	3%	2%

Intensities in 90° c-plane

0°	2°	4°	6°	8°	10°	12°	14°	16°	18°	20°	22°	24°	26°	28°	30°	32°	34°	36°	38°
2670	2628	2514	2334	2114	1863	1598	1327	1075	850	660	506	384	294	229	180	142	110	80	56
100%	98%	94%	87%	79%	70%	60%	50%	40%	32%	25%	19%	14%	11%	9%	7%	5%	4%	3%	2%

Intensities in 180° c-plane

0°	2°	4°	6°	8°	10°	12°	14°	16°	18°	20°	22°	24°	26°	28°	30°	32°	34°	36°	38°
2670	2635	2521	2341	2120	1871	1608	1341	1090	870	678	522	399	308	240	188	147	112	83	59
100%	99%	94%	88%	79%	70%	60%	50%	41%	33%	25%	20%	15%	12%	9%	7%	5%	4%	3%	2%

Intensities in 270° c-plane

0°	2°	4°	6°	8°	10°	12°	14°	16°	18°	20°	22°	24°	26°	28°	30°	32°	34°	36°	38°
2670	2628	2514	2334	2114	1863	1598	1327	1075	850	660	506	384	294	229	180	142	110	80	56
100%	98%	94%	87%	79%	70%	60%	50%	40%	32%	25%	19%	14%	11%	9%	7%	5%	4%	3%	2%

Beam angle 50%	Field angle 10%	Cut-off angle 2.5%	Intensity ratio in 120°	Intensity ratio in 90°
28°	53.9°	74.4°	99.6%	98.8%