

Photometric / Colorimetric / Electric Report

Fixture Model:

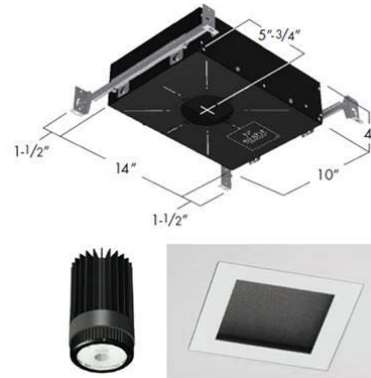
804S-K2S-WD-4-40-PR1-8-350-FS-LG-P-1-WH-NL

Trim Model:

FS-LG-P-1-WH/NL

Date:

8/6/2024



Light efficiency:

64 Lumen/Watt

Light quality:

CRI: 96.7

Color temperature:

2998 K

CIE 1931:

**x: 0.436
y: 0.401**

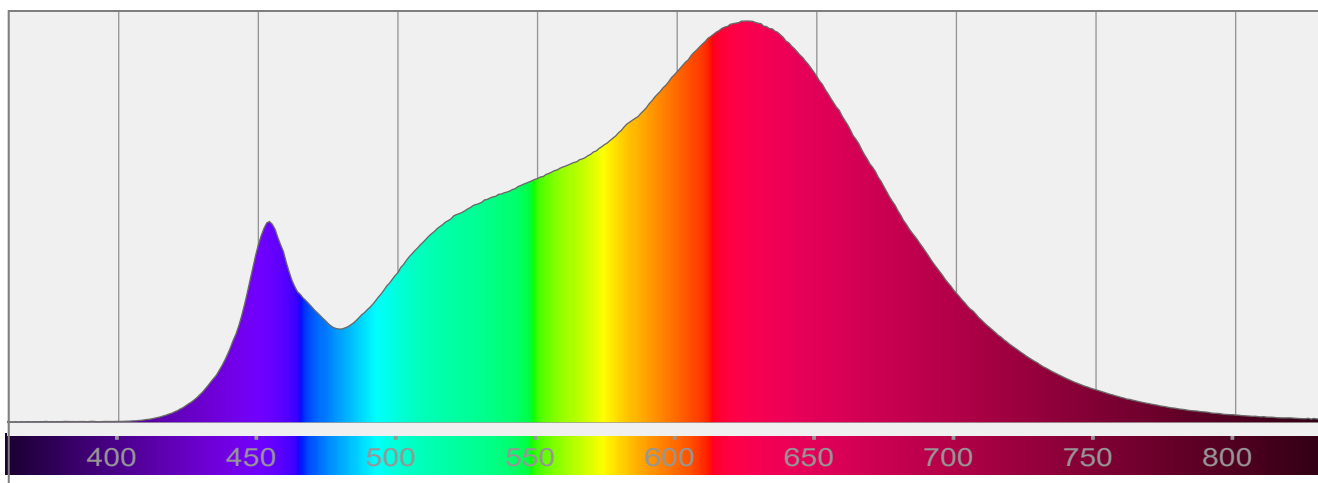
Output: 927 lm

Peak: 1946 cd

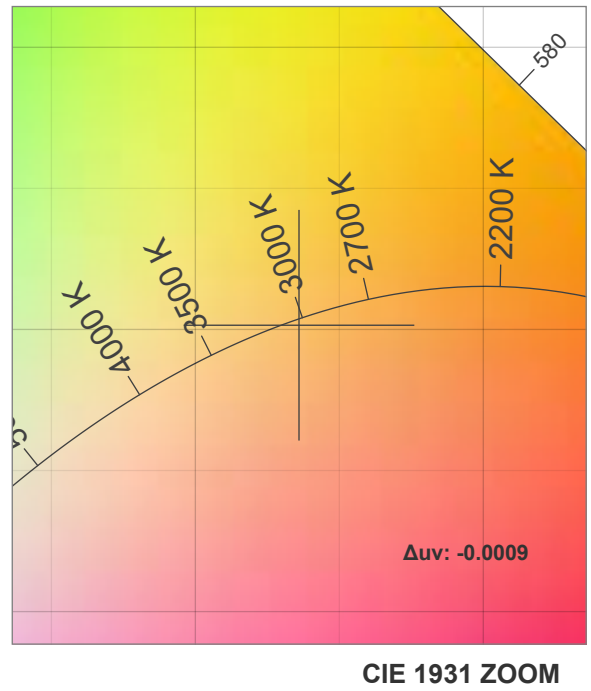
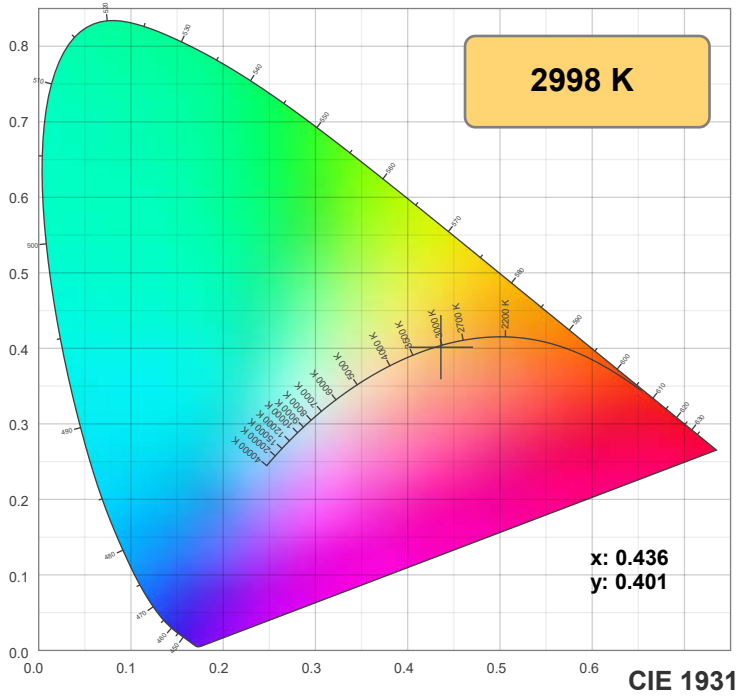
Power: 14.6 W

PF: 0.99

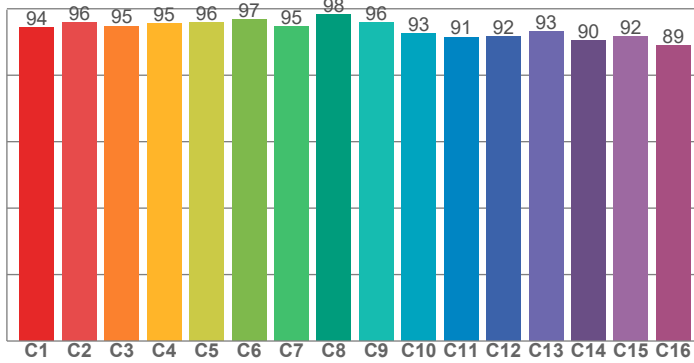
Spectra:



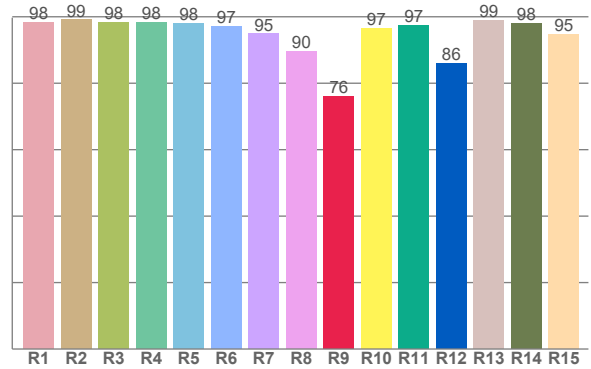
Color Details



TM-30: 94.0



CRI: 96.7 (R1-R8)



CRI R Values:

R1	R2	R3	R4	R5	R6	R7	R8	R9	R10	R11	R12	R13	R14	R15
98.2	99.0	98.2	98.3	98.0	97.1	94.8	89.5	76.1	96.5	97.4	85.9	98.9	98.1	94.8

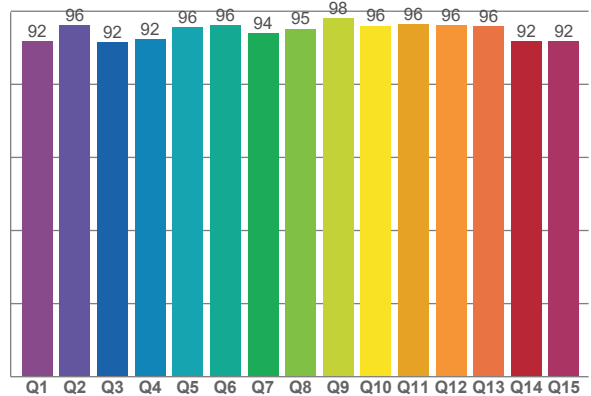
TM30 C Values:

C1	C2	C3	C4	C5	C6	C7	C8	C9	C10	C11	C12	C13	C14	C15	C16
94.2	95.9	94.8	95.5	95.8	96.7	94.7	98.3	95.8	92.6	91.5	91.6	93.0	90.5	91.7	88.9

CQS Q values:

Q1	Q2	Q3	Q4	Q5	Q6	Q7	Q8	Q9	Q10	Q11	Q12	Q13	Q14	Q15
91.7	96.2	91.6	92.4	95.6	96.1	93.9	95.2	98.2	96.0	96.4	96.2	95.9	91.8	91.7

CQS: 94.0



Color Parameters:

CCT	CRI	CRI R9	TM30 Rf	TM30 Rg	CQS	x	y	u	v	Δuv
2998 K	96.7	76.1	94.0	100.4	94.0	0.436	0.401	0.251	0.347	-0.0009

TM-30 Details

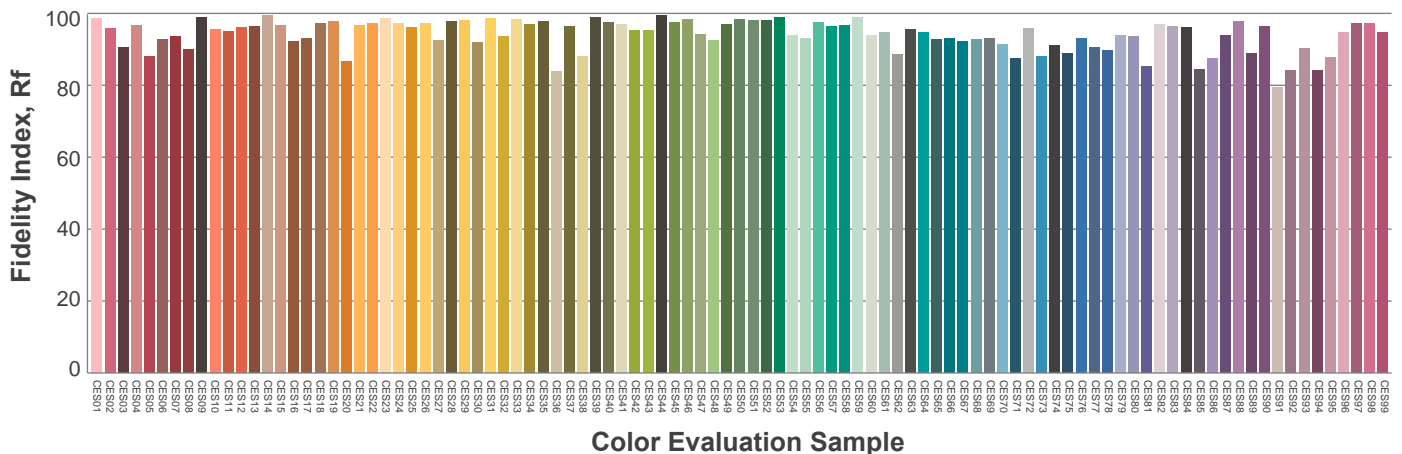
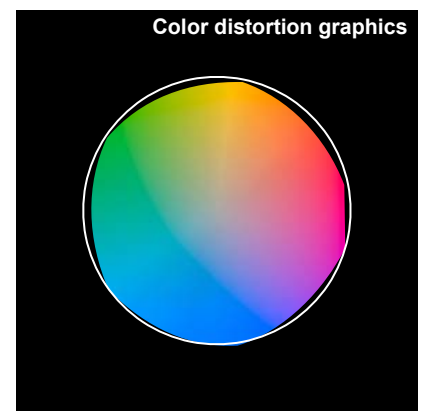
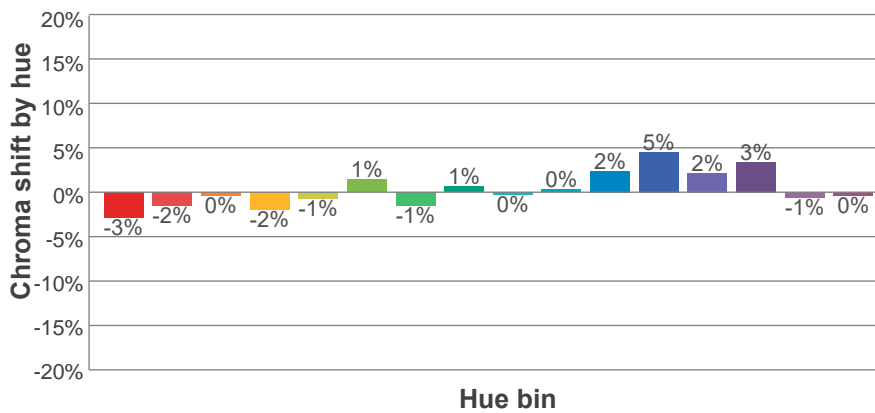
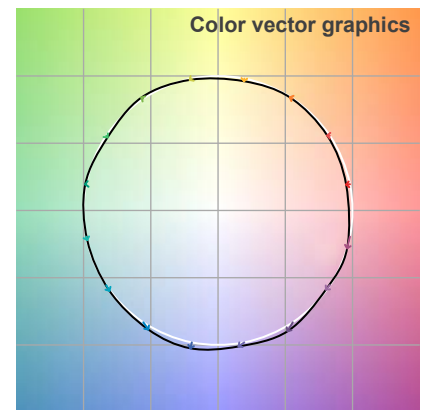
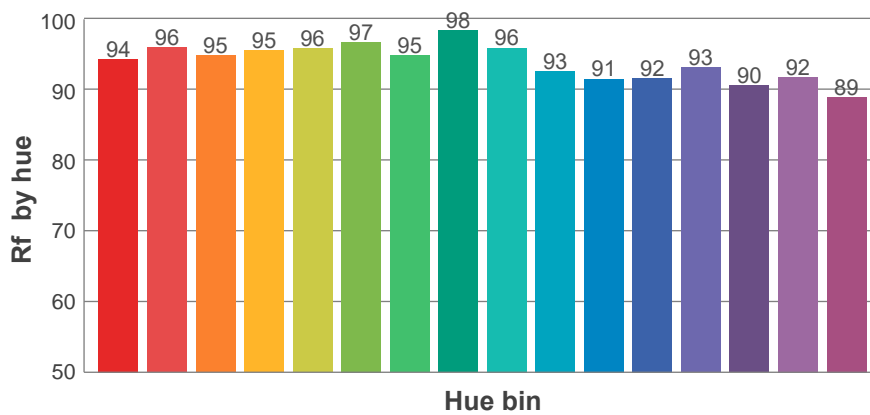
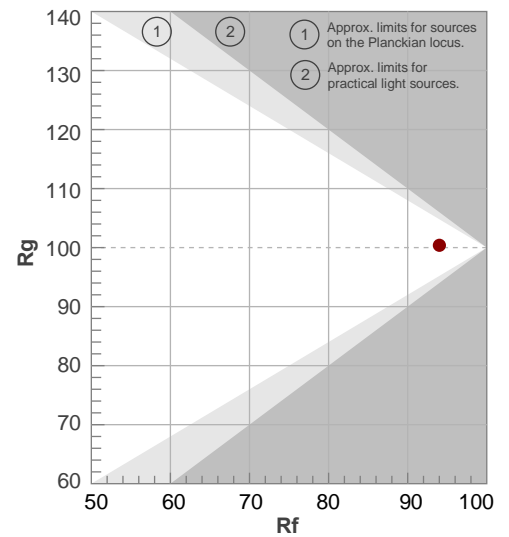
Rf 94.0

Fidelity index Rf

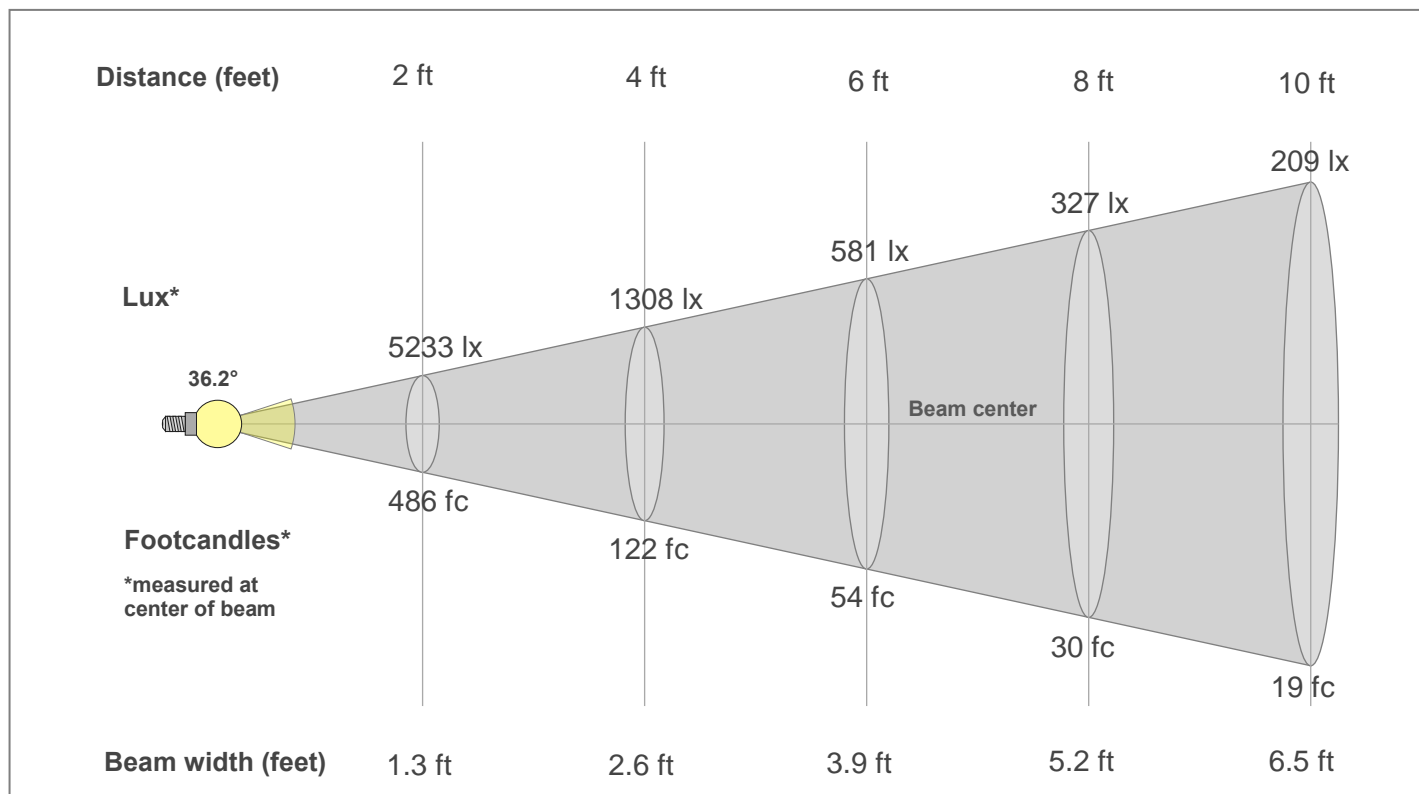
Rg 100.4

Gamut index Rg

Hue Bin	R _f	Shifts (%)	
		Chroma	Hue
1	94	-3%	0%
2	96	-2%	1%
3	95	0%	2%
4	95	-2%	0%
5	96	-1%	2%
6	97	1%	1%
7	95	-1%	0%
8	98	1%	0%
9	96	0%	3%
10	93	0%	5%
11	91	2%	6%
12	92	5%	0%
13	93	2%	-5%
14	90	3%	-7%
15	92	-1%	-4%
16	89	0%	-9%



Beam Details



Beam Intensities from 1-20m

1m	2m	3m	4m	5m	6m	7m	8m	9m	10m	11m	12m	13m	14m	15m	16m	17m	18m	19m	20m
3.3ft	6.6ft	9.8ft	13.1ft	16.4ft	19.7ft	23ft	26.2ft	29.5ft	32.8ft	36.1ft	39.4ft	42.7ft	45.9ft	49.2ft	52.5ft	55.8ft	59.1ft	62.3ft	65.6ft
1945lx	486lx	216lx	122lx	78lx	54lx	40lx	30lx	24lx	19lx	16lx	14lx	12lx	10lx	9lx	8lx	7lx	6lx	5lx	5lx
180.7fc	45.2fc	20.1fc	11.3fc	7.2fc	5fc	3.7fc	2.8fc	2.2fc	1.8fc	1.5fc	1.3fc	1.1fc	0.9fc	0.8fc	0.7fc	0.6fc	0.6fc	0.5fc	0.5fc

Intensities in 0° c-plane

0°	2°	4°	6°	8°	10°	12°	14°	16°	18°	20°	22°	24°	26°	28°	30°	32°	34°	36°	38°
1945	1933	1886	1811	1706	1583	1446	1297	1139	983	834	696	575	472	387	315	254	204	164	131
100%	99%	97%	93%	88%	81%	74%	67%	59%	51%	43%	36%	30%	24%	20%	16%	13%	10%	8%	7%

Intensities in 90° c-plane

0°	2°	4°	6°	8°	10°	12°	14°	16°	18°	20°	22°	24°	26°	28°	30°	32°	34°	36°	38°
1945	1931	1886	1808	1705	1582	1443	1292	1134	978	830	694	573	471	387	316	255	206	165	132
100%	99%	97%	93%	88%	81%	74%	66%	58%	50%	43%	36%	29%	24%	20%	16%	13%	11%	9%	7%

Intensities in 180° c-plane

0°	2°	4°	6°	8°	10°	12°	14°	16°	18°	20°	22°	24°	26°	28°	30°	32°	34°	36°	38°
1945	1933	1886	1811	1706	1583	1446	1297	1139	983	834	696	575	472	387	315	254	204	164	131
100%	99%	97%	93%	88%	81%	74%	67%	59%	51%	43%	36%	30%	24%	20%	16%	13%	10%	8%	7%

Intensities in 270° c-plane

0°	2°	4°	6°	8°	10°	12°	14°	16°	18°	20°	22°	24°	26°	28°	30°	32°	34°	36°	38°
1945	1931	1886	1808	1705	1582	1443	1292	1134	978	830	694	573	471	387	316	255	206	165	132
100%	99%	97%	93%	88%	81%	74%	66%	58%	50%	43%	36%	29%	24%	20%	16%	13%	11%	9%	7%

Beam angle 50%	Field angle 10%	Cut-off angle 2.5%	Intensity ratio in 120°	Intensity ratio in 90°
36.2°	69°	93.1°	99.4%	96.0%