

Photometric / Colorimetric / Electric Report

Fixture Model:

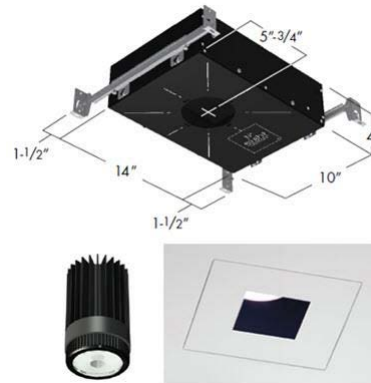
804S-K2S-WD-2-40-DIM1-8-350-FS-P-1-WH

Trim Model:

FS-P-1-WH

Date:

4/8/2022



Light efficiency:

57 Lumen/Watt

Light quality:

CRI: 96.8

Color temperature:

2884 K

CIE 1931:

**x: 0.443
y: 0.402**

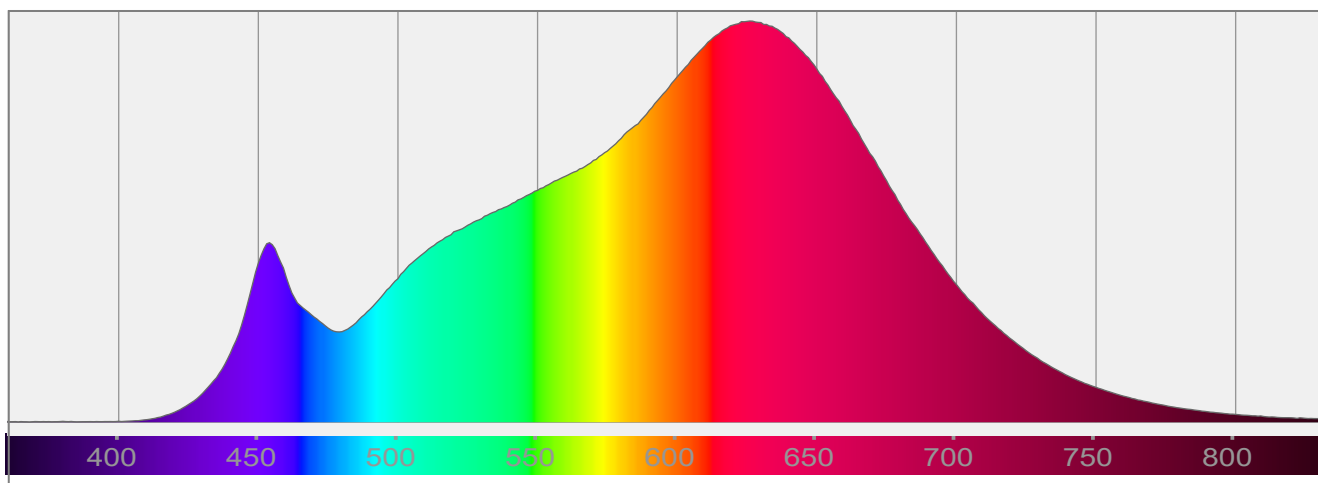
Output: 836 lm

Peak: 1700 cd

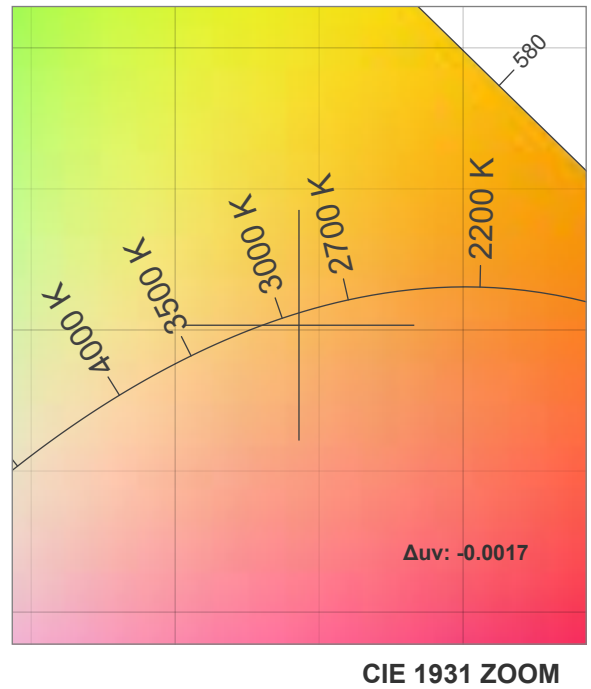
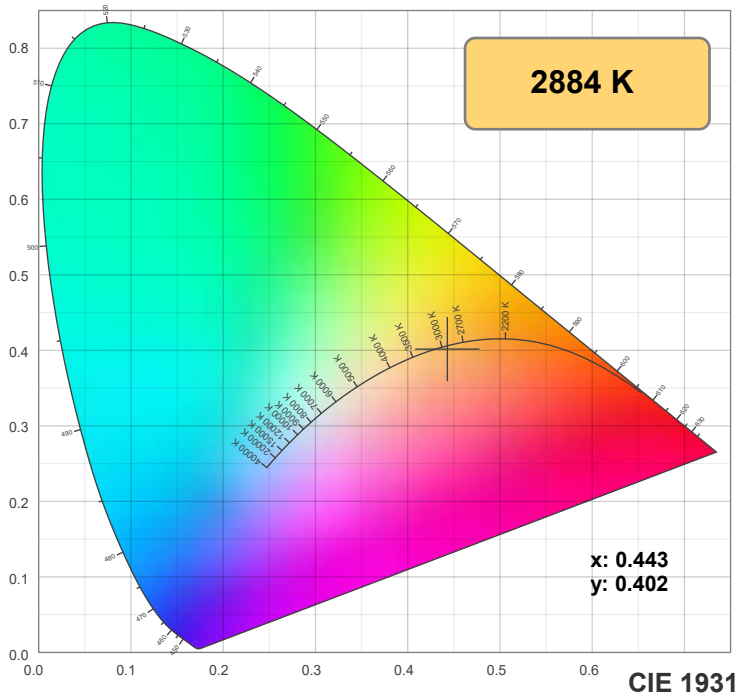
Power: 14.6 W

PF: 1.0

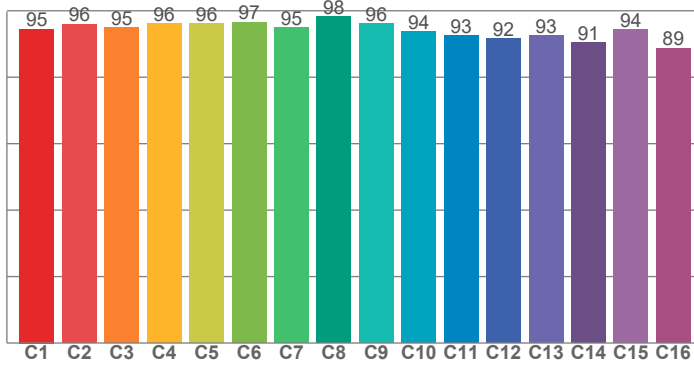
Spectra:



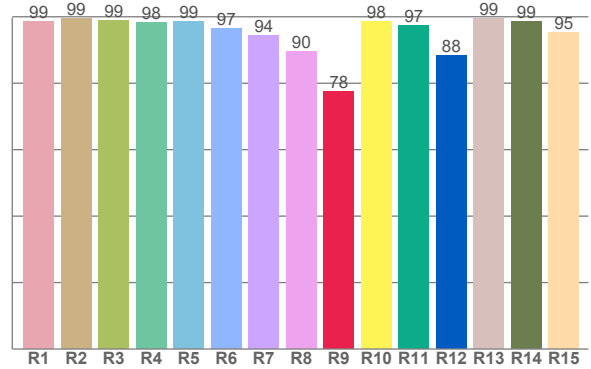
Color Details



TM-30: 94.4



CRI: 96.8 (R1-R8)



CRI R Values:

R1	R2	R3	R4	R5	R6	R7	R8	R9	R10	R11	R12	R13	R14	R15
98.6	99.4	99.0	98.4	98.7	96.5	94.3	89.6	77.6	98.5	97.4	88.3	99.4	98.7	95.4

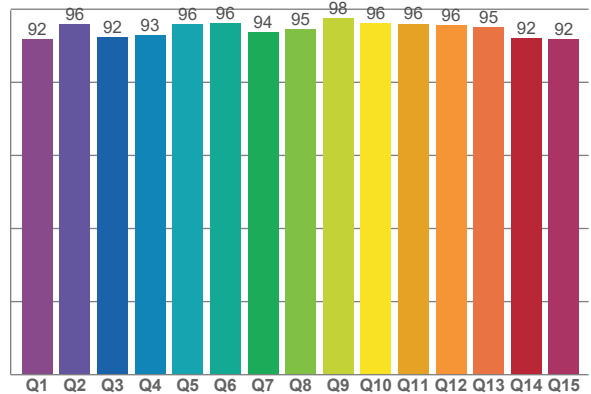
TM30 C Values:

C1	C2	C3	C4	C5	C6	C7	C8	C9	C10	C11	C12	C13	C14	C15	C16
94.5	96.0	94.9	96.1	96.1	96.6	95.0	98.3	96.3	93.6	92.6	91.7	92.6	90.5	94.3	88.8

CQS Q values:

Q1	Q2	Q3	Q4	Q5	Q6	Q7	Q8	Q9	Q10	Q11	Q12	Q13	Q14	Q15
91.8	95.8	92.3	93.0	96.0	96.2	93.6	94.6	97.6	96.1	96.0	95.6	95.1	92.0	91.8

CQS: 94.1



Color Parameters:

CCT	CRI	CRI R9	TM30 Rf	TM30 Rg	CQS	x	y	u	v	Δuv
2884 K	96.8	77.6	94.4	100.5	94.1	0.443	0.402	0.256	0.348	-0.0017

TM-30 Details

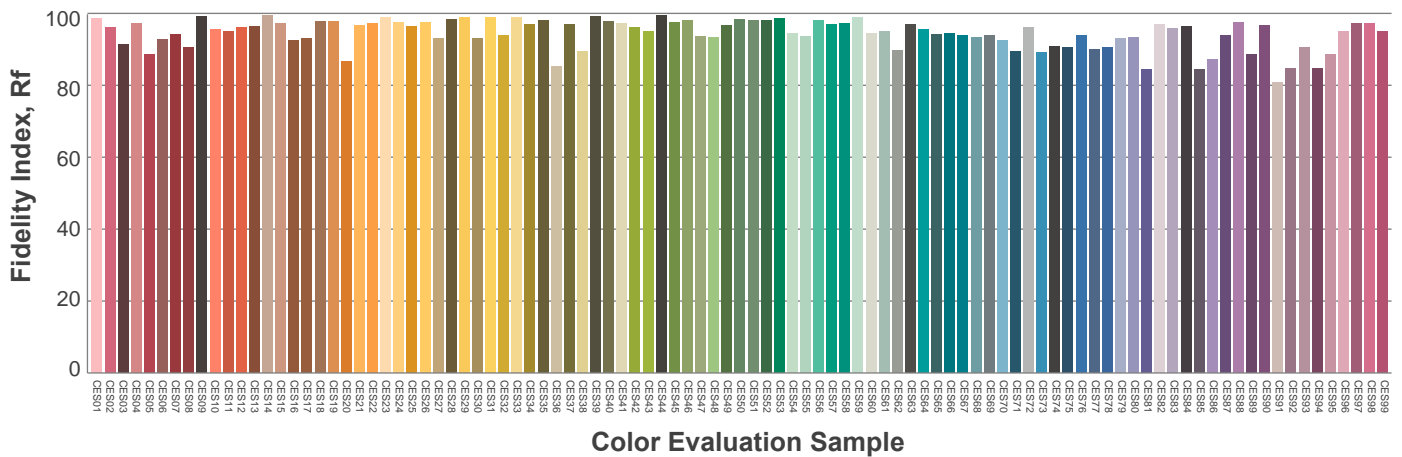
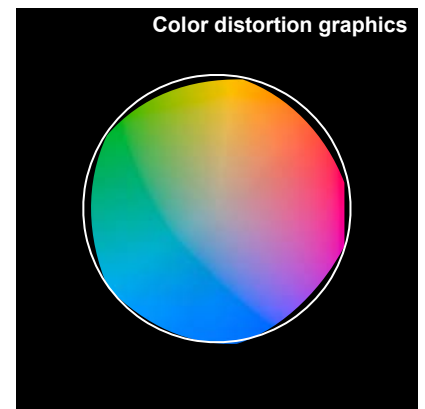
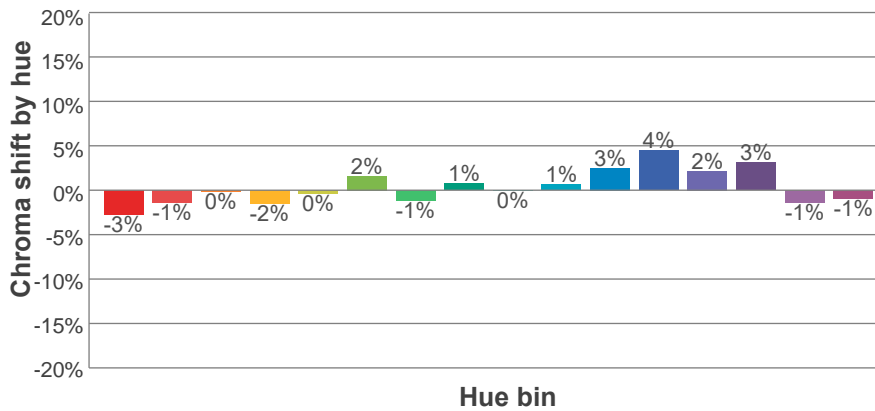
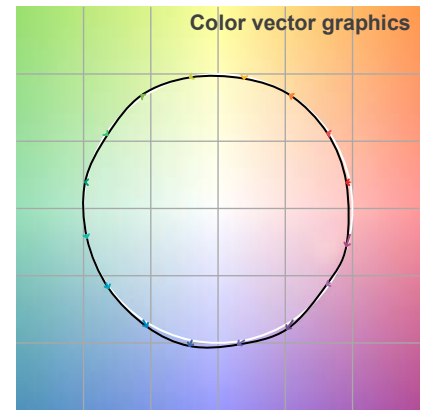
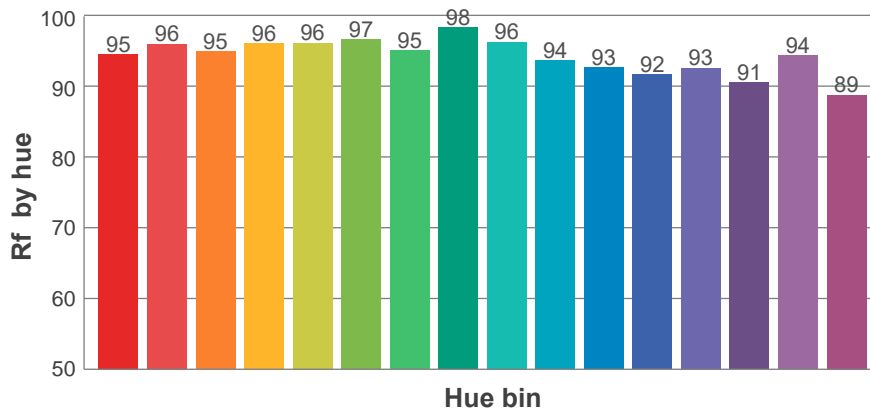
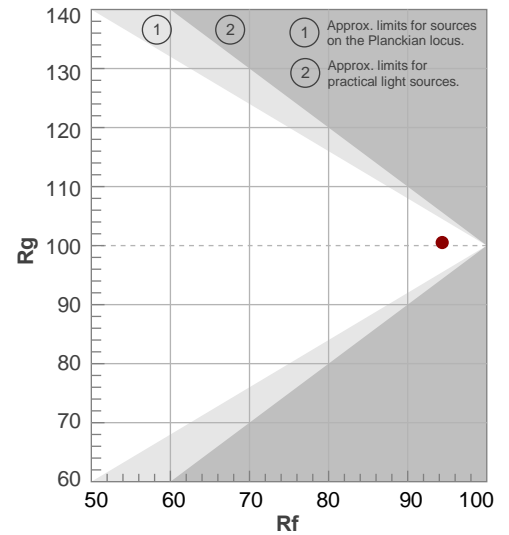
Rf 94.4

Fidelity index Rf

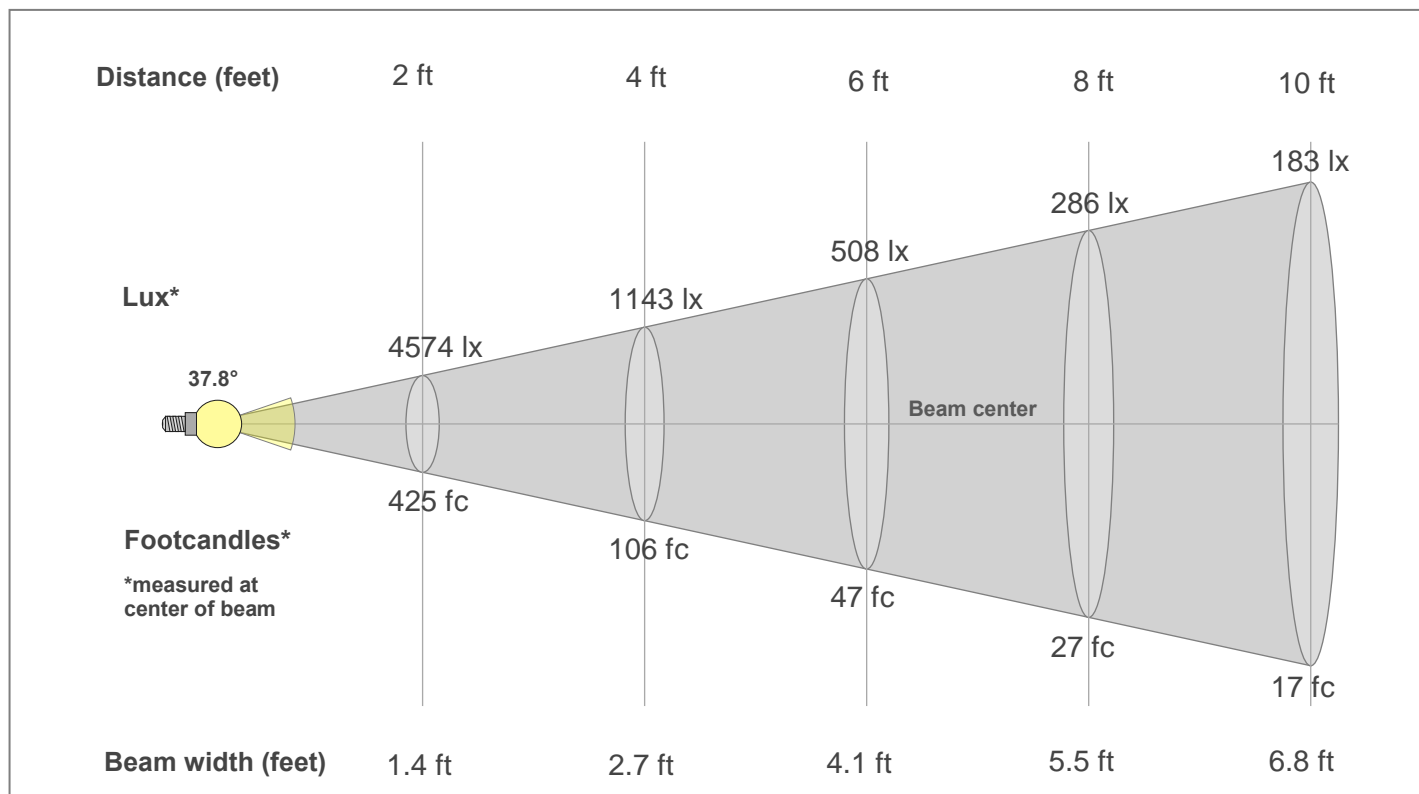
Rg 100.5

Gamut index Rg

Hue Bin	R _f	Shifts (%)	
		Chroma	Hue
1	95	-3%	0%
2	96	-1%	1%
3	95	0%	2%
4	96	-2%	0%
5	96	0%	1%
6	97	2%	1%
7	95	-1%	0%
8	98	1%	0%
9	96	0%	2%
10	94	1%	4%
11	93	3%	5%
12	92	4%	-1%
13	93	2%	-5%
14	91	3%	-7%
15	94	-1%	-2%
16	89	-1%	-9%



Beam Details



Beam Intensities from 1-20m

1m	2m	3m	4m	5m	6m	7m	8m	9m	10m	11m	12m	13m	14m	15m	16m	17m	18m	19m	20m
3.3ft	6.6ft	9.8ft	13.1ft	16.4ft	19.7ft	23ft	26.2ft	29.5ft	32.8ft	36.1ft	39.4ft	42.7ft	45.9ft	49.2ft	52.5ft	55.8ft	59.1ft	62.3ft	65.6ft
1700lx	425lx	189lx	106lx	68lx	47lx	35lx	27lx	21lx	17lx	14lx	12lx	10lx	9lx	8lx	7lx	6lx	5lx	5lx	4lx
157.9fc	39.5fc	17.5fc	9.9fc	6.3fc	4.4fc	3.2fc	2.5fc	1.9fc	1.6fc	1.3fc	1.1fc	0.9fc	0.8fc	0.7fc	0.6fc	0.5fc	0.5fc	0.4fc	0.4fc

Intensities in 0° c-plane

0°	2°	4°	6°	8°	10°	12°	14°	16°	18°	20°	22°	24°	26°	28°	30°	32°	34°	36°	38°
1700	1688	1649	1589	1505	1403	1291	1167	1038	907	779	659	548	451	368	298	238	187	145	112
100%	99%	97%	93%	89%	83%	76%	69%	61%	53%	46%	39%	32%	27%	22%	18%	14%	11%	9%	7%

Intensities in 90° c-plane

0°	2°	4°	6°	8°	10°	12°	14°	16°	18°	20°	22°	24°	26°	28°	30°	32°	34°	36°	38°
1700	1688	1649	1589	1505	1403	1291	1167	1038	907	779	659	548	451	368	298	238	187	145	112
100%	99%	97%	93%	89%	83%	76%	69%	61%	53%	46%	39%	32%	27%	22%	18%	14%	11%	9%	7%

Intensities in 180° c-plane

0°	2°	4°	6°	8°	10°	12°	14°	16°	18°	20°	22°	24°	26°	28°	30°	32°	34°	36°	38°
1700	1688	1649	1589	1505	1403	1291	1167	1038	907	779	659	548	451	368	298	238	187	145	112
100%	99%	97%	93%	89%	83%	76%	69%	61%	53%	46%	39%	32%	27%	22%	18%	14%	11%	9%	7%

Intensities in 270° c-plane

0°	2°	4°	6°	8°	10°	12°	14°	16°	18°	20°	22°	24°	26°	28°	30°	32°	34°	36°	38°
1700	1688	1649	1589	1505	1403	1291	1167	1038	907	779	659	548	451	368	298	238	187	145	112
100%	99%	97%	93%	89%	83%	76%	69%	61%	53%	46%	39%	32%	27%	22%	18%	14%	11%	9%	7%

Beam angle 50%	Field angle 10%	Cut-off angle 2.5%	Intensity ratio in 120°	Intensity ratio in 90°
37.8°	69.5°	90.3°	99.4%	96.7%