

# Photometric / Colorimetric / Electric Report

Fixture Model:

805-J5-WD-15-PR1-8.5-350-FS-LG-P-1-WH-NL

Trim Model:

FS-LG-P-1-WH/NL

Date:

1/23/2024



Light efficiency:



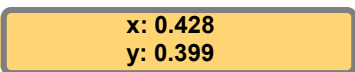
Light quality:



Color temperature:



CIE 1931:



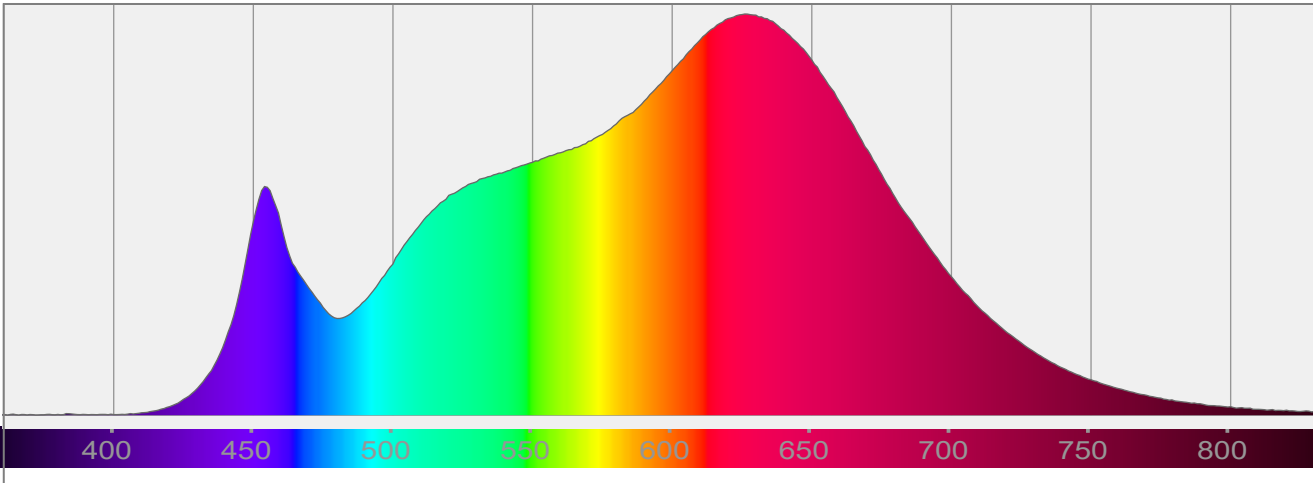
Output: 922 lm

Peak: 3833 cd

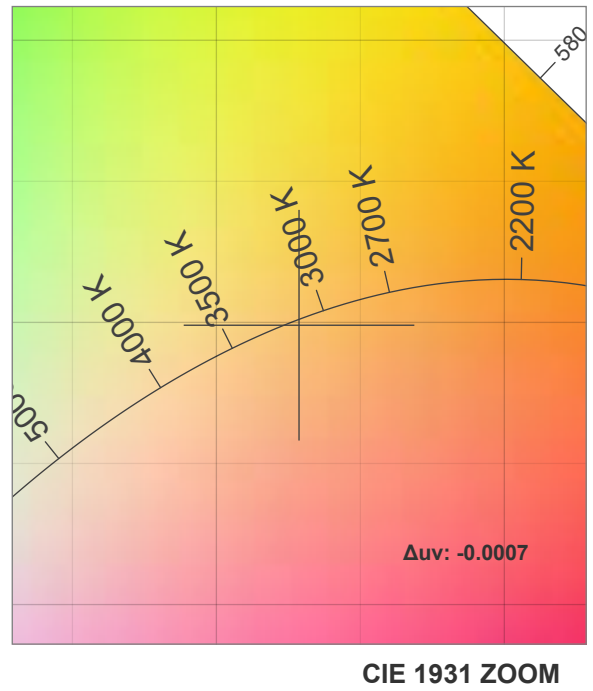
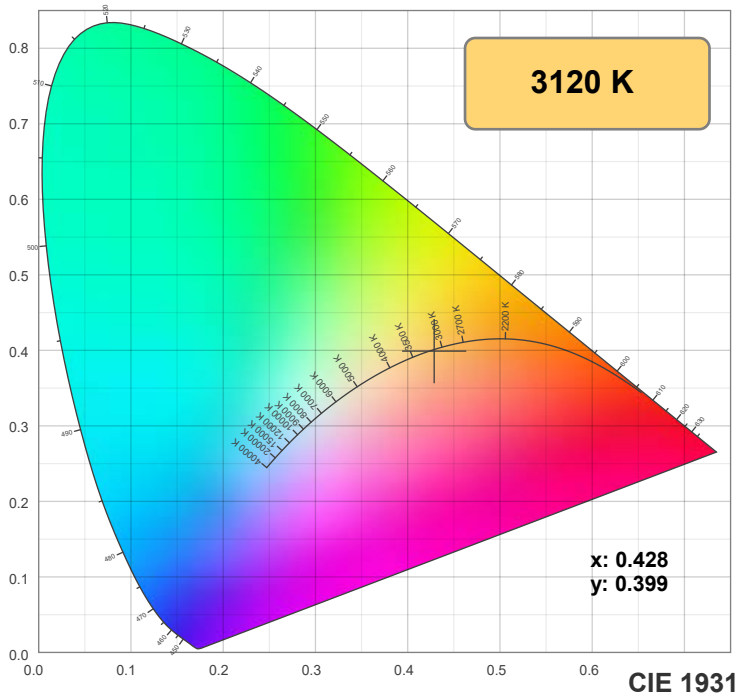
Power: 14.7 W

PF: 0.99

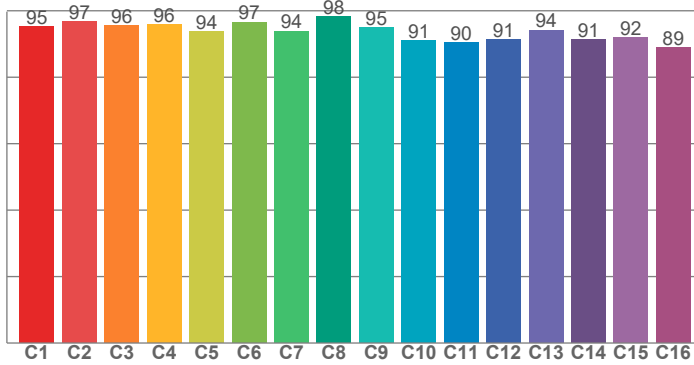
Spectra:



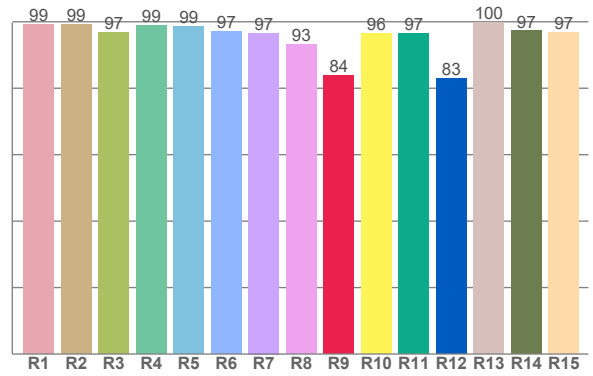
## Color Details



TM-30: 93.8



CRI: 97.3 (R1-R8)



CRI R Values:

R1	R2	R3	R4	R5	R6	R7	R8	R9	R10	R11	R12	R13	R14	R15
99.0	98.9	96.7	98.8	98.3	97.1	96.5	92.8	82.4	95.7	96.7	82.4	99.5	97.1	96.4

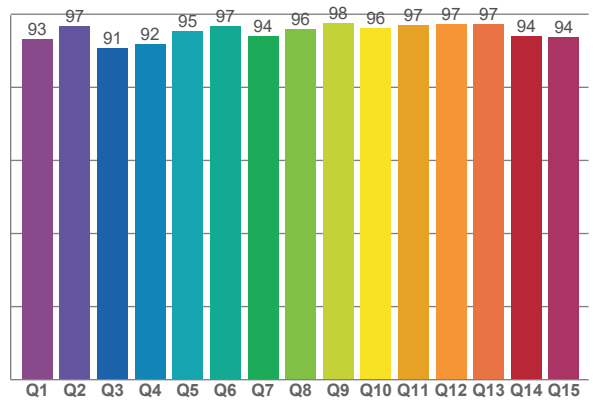
TM30 C Values:

C1	C2	C3	C4	C5	C6	C7	C8	C9	C10	C11	C12	C13	C14	C15	C16
95.0	96.6	95.2	95.8	93.6	96.5	94.0	98.3	94.9	90.8	90.1	91.4	94.2	91.3	92.0	88.8

CQS Q values:

Q1	Q2	Q3	Q4	Q5	Q6	Q7	Q8	Q9	Q10	Q11	Q12	Q13	Q14	Q15
92.9	96.8	90.5	91.5	95.3	96.4	93.8	95.9	97.5	95.9	96.8	97.2	97.2	93.8	93.5

CQS: 94.4



Color Parameters:

CCT	CRI	CRI R9	TM30 Rf	TM30 Rg	CQS	x	y	u	v	Δuv
3120 K	97.3	82.4	93.8	100.8	94.4	0.428	0.399	0.247	0.345	-0.0007

# TM-30 Details

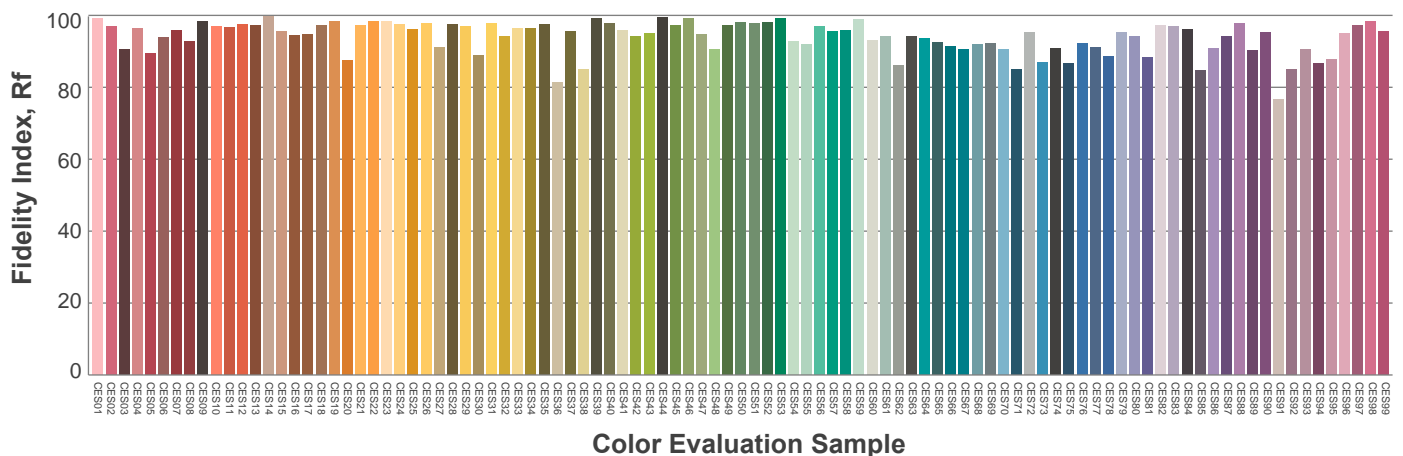
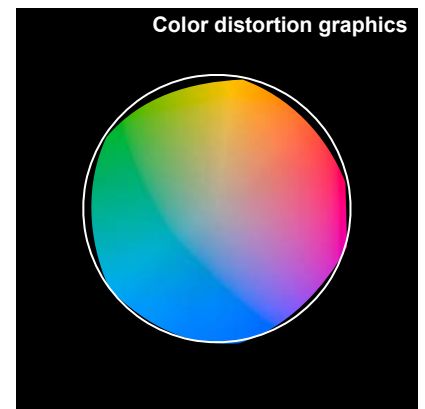
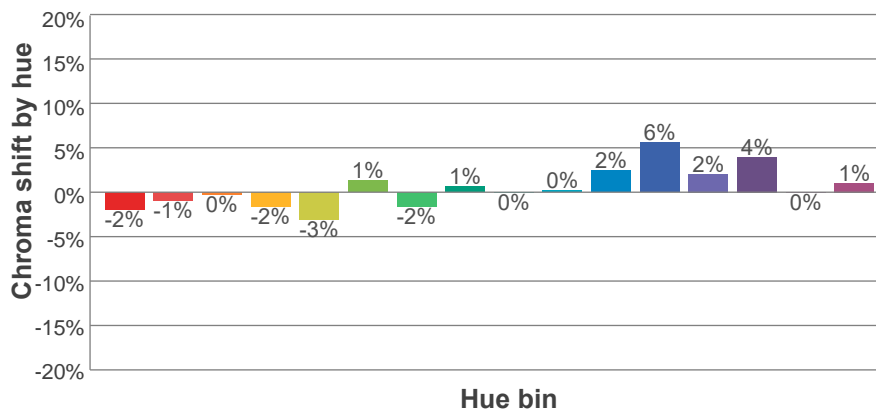
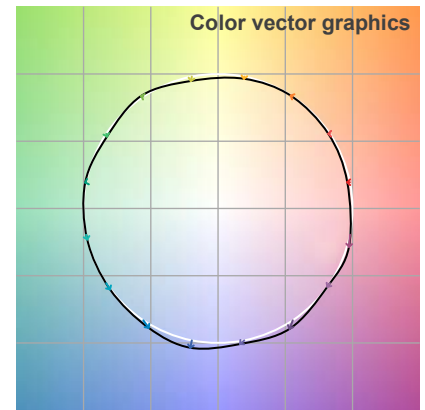
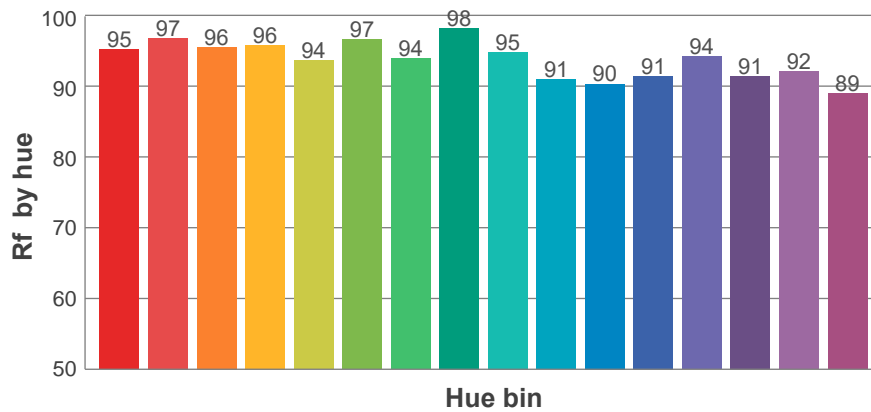
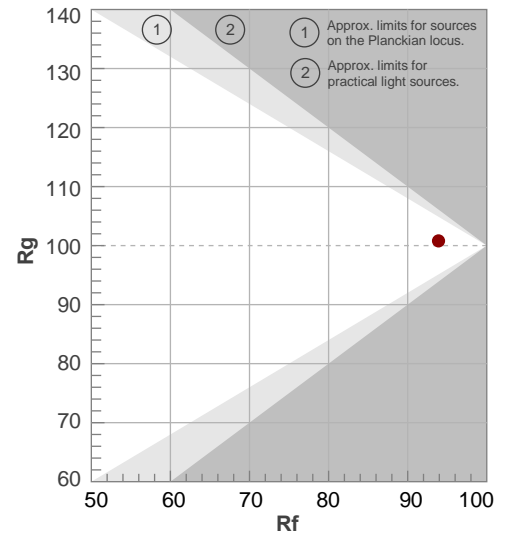
**Rf 93.8**

Fidelity index Rf

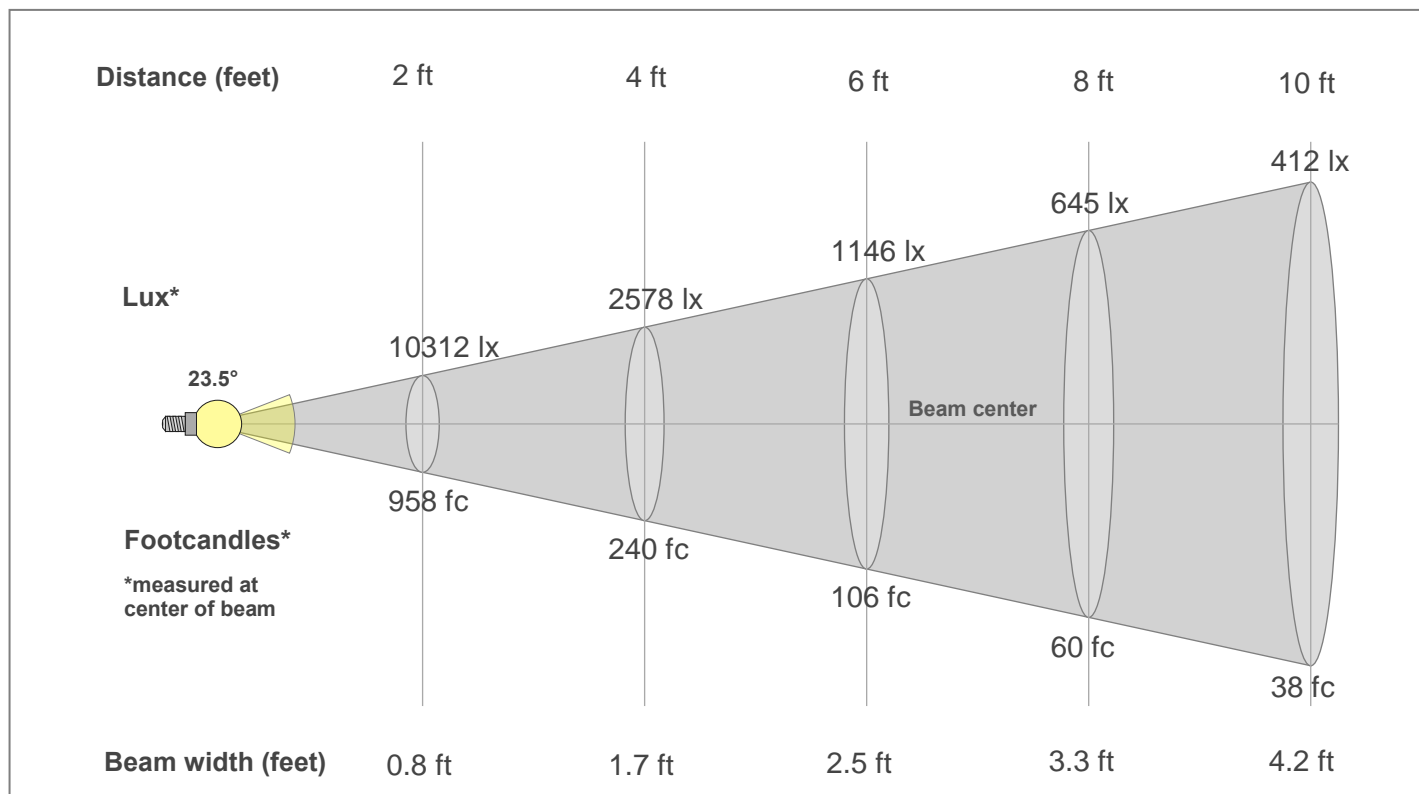
**Rg 100.8**

Gamut index Rg

Hue Bin	R <sub>f</sub>	Shifts (%)	
		Chroma	Hue
1	95	-2%	0%
2	97	-1%	1%
3	95	0%	2%
4	96	-2%	0%
5	94	-3%	1%
6	97	1%	1%
7	94	-2%	1%
8	98	1%	0%
9	95	0%	4%
10	91	0%	5%
11	90	2%	7%
12	91	6%	0%
13	94	2%	-3%
14	91	4%	-6%
15	92	0%	-3%
16	89	1%	-9%



## Beam Details



### Beam Intensities from 1-20m

1m	2m	3m	4m	5m	6m	7m	8m	9m	10m	11m	12m	13m	14m	15m	16m	17m	18m	19m	20m
3.3ft	6.6ft	9.8ft	13.1ft	16.4ft	19.7ft	23ft	26.2ft	29.5ft	32.8ft	36.1ft	39.4ft	42.7ft	45.9ft	49.2ft	52.5ft	55.8ft	59.1ft	62.3ft	65.6ft
3832lx	958lx	426lx	240lx	153lx	106lx	78lx	60lx	47lx	38lx	32lx	27lx	23lx	20lx	17lx	15lx	13lx	12lx	11lx	10lx
356fc	89fc	39.6fc	22.3fc	14.2fc	9.9fc	7.3fc	5.6fc	4.4fc	3.6fc	2.9fc	2.5fc	2.1fc	1.8fc	1.6fc	1.4fc	1.2fc	1.1fc	1fc	0.9fc

### Intensities in 0° c-plane

0°	2°	4°	6°	8°	10°	12°	14°	16°	18°	20°	22°	24°	26°	28°	30°	32°	34°	36°	38°
3832	3780	3577	3240	2804	2325	1856	1447	1116	863	671	524	411	322	256	204	162	129	102	82
100%	99%	93%	85%	73%	61%	48%	38%	29%	23%	18%	14%	11%	8%	7%	5%	4%	3%	3%	2%

### Intensities in 90° c-plane

0°	2°	4°	6°	8°	10°	12°	14°	16°	18°	20°	22°	24°	26°	28°	30°	32°	34°	36°	38°
3832	3776	3597	3276	2841	2347	1861	1432	1091	835	643	497	387	304	241	193	154	123	98	79
100%	99%	94%	85%	74%	61%	49%	37%	28%	22%	17%	13%	10%	8%	6%	5%	4%	3%	3%	2%

### Intensities in 180° c-plane

0°	2°	4°	6°	8°	10°	12°	14°	16°	18°	20°	22°	24°	26°	28°	30°	32°	34°	36°	38°
3832	3780	3577	3240	2804	2325	1856	1447	1116	863	671	524	411	322	256	204	162	129	102	82
100%	99%	93%	85%	73%	61%	48%	38%	29%	23%	18%	14%	11%	8%	7%	5%	4%	3%	3%	2%

### Intensities in 270° c-plane

0°	2°	4°	6°	8°	10°	12°	14°	16°	18°	20°	22°	24°	26°	28°	30°	32°	34°	36°	38°
3832	3776	3597	3276	2841	2347	1861	1432	1091	835	643	497	387	304	241	193	154	123	98	79
100%	99%	94%	85%	74%	61%	49%	37%	28%	22%	17%	13%	10%	8%	6%	5%	4%	3%	3%	2%

Beam angle 50%	Field angle 10%	Cut-off angle 2.5%	Intensity ratio in 120°	Intensity ratio in 90°
23.5°	48.7°	72.8°	99.3%	98.1%