

Photometric / Colorimetric / Electric Report

Fixture Model:

805-J5-WD-25-PR1-8.5-350-FR-LG-P-1-WH-NL

Trim Model:

FR-LG-P-1-WH/NL

Date:

1/19/2024



Light efficiency:

57 Lumen/Watt

Light quality:

CRI: 97.3

Color temperature:

3126 K

CIE 1931:

**x: 0.427
y: 0.399**

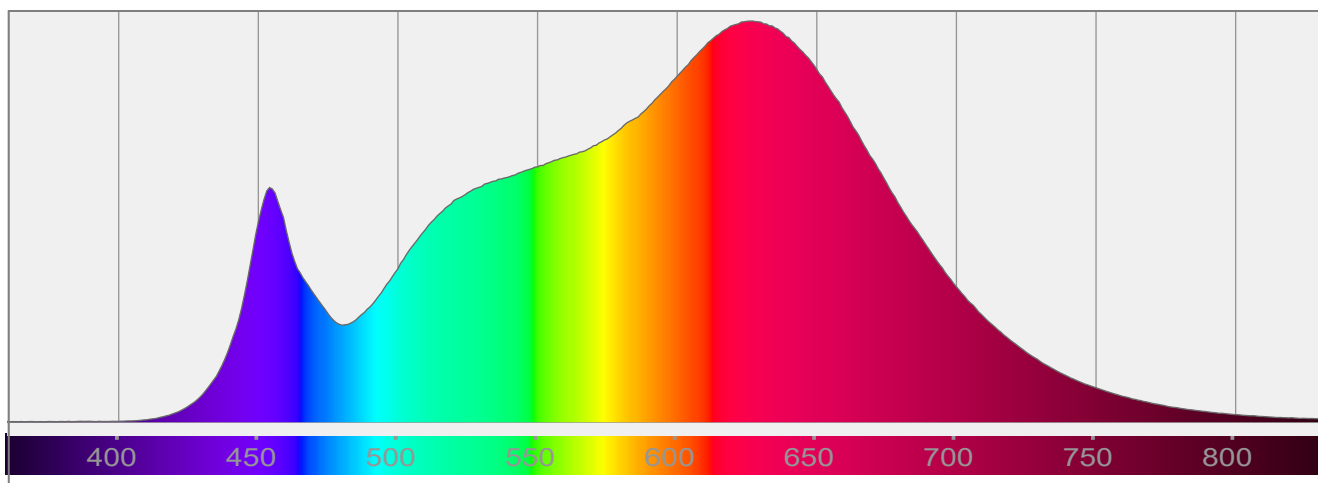
Output: 827 lm

Peak: 2431 cd

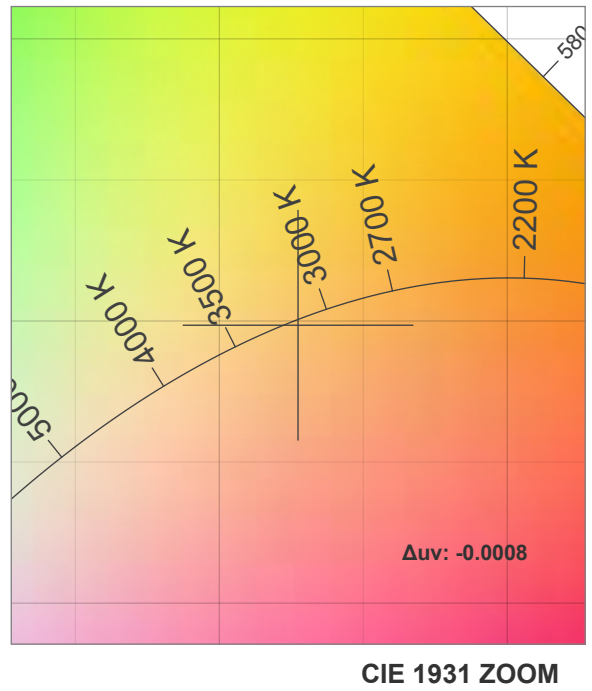
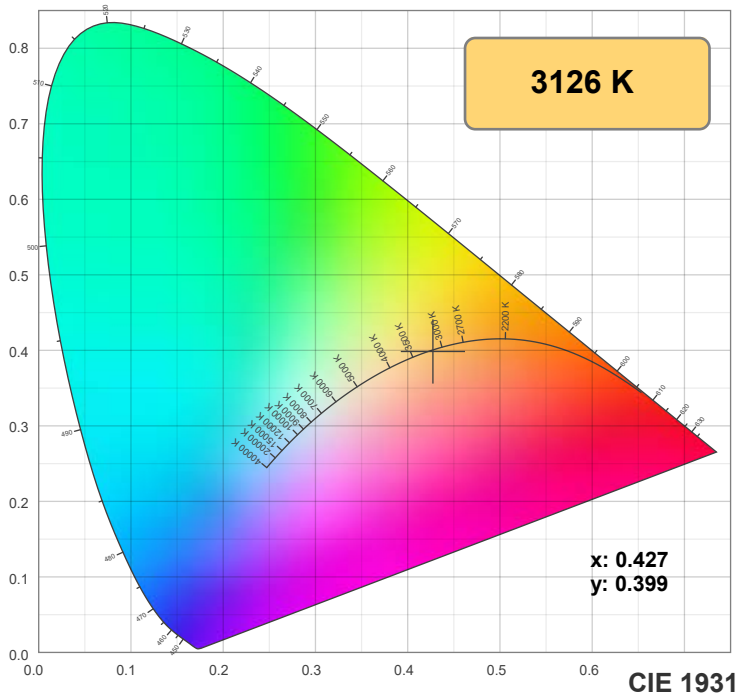
Power: 14.6 W

PF: 0.99

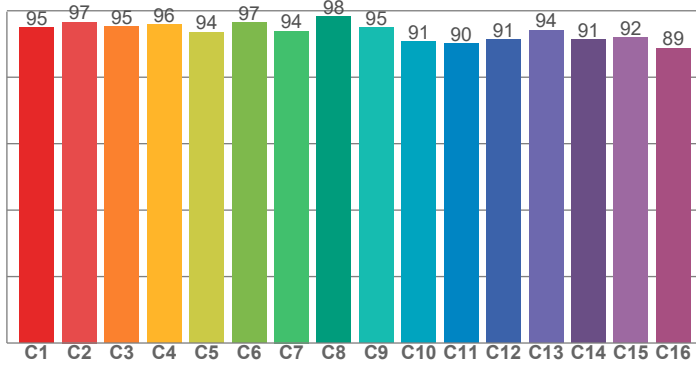
Spectra:



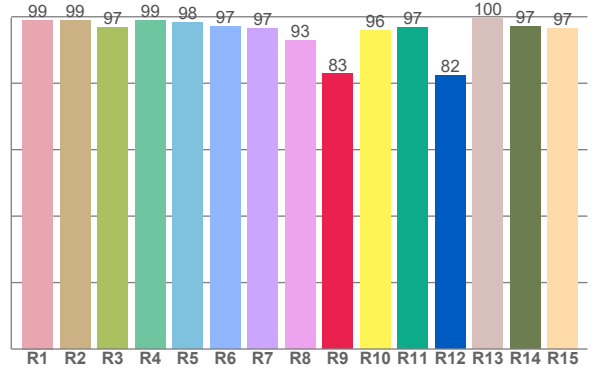
Color Details



TM-30: 93.8



CRI: 97.3 (R1-R8)



CRI R Values:

R1	R2	R3	R4	R5	R6	R7	R8	R9	R10	R11	R12	R13	R14	R15
99.0	99.0	96.8	98.8	98.3	97.1	96.5	92.9	82.8	95.9	96.7	82.4	99.6	97.2	96.6

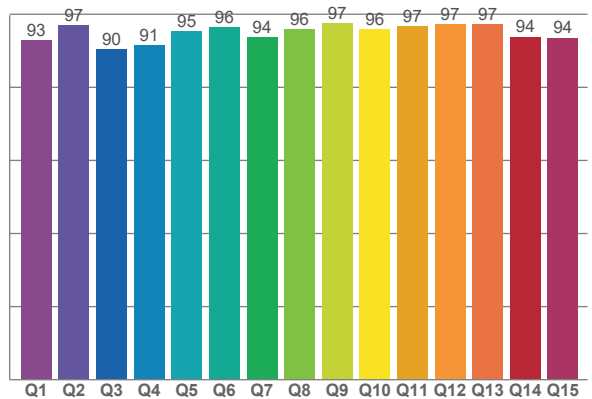
TM30 C Values:

C1	C2	C3	C4	C5	C6	C7	C8	C9	C10	C11	C12	C13	C14	C15	C16
95.1	96.6	95.2	95.8	93.6	96.5	93.9	98.3	94.9	90.7	90.1	91.4	94.2	91.3	92.0	88.8

CQS Q values:

Q1	Q2	Q3	Q4	Q5	Q6	Q7	Q8	Q9	Q10	Q11	Q12	Q13	Q14	Q15
93.0	96.9	90.4	91.4	95.2	96.4	93.7	95.8	97.5	95.9	96.7	97.1	97.1	93.8	93.6

CQS: 94.4



Color Parameters:

CCT	CRI	CRI R9	TM30 Rf	TM30 Rg	CQS	x	y	u	v	Δuv
3126 K	97.3	82.8	93.8	100.8	94.4	0.427	0.399	0.247	0.345	-0.0008

TM-30 Details

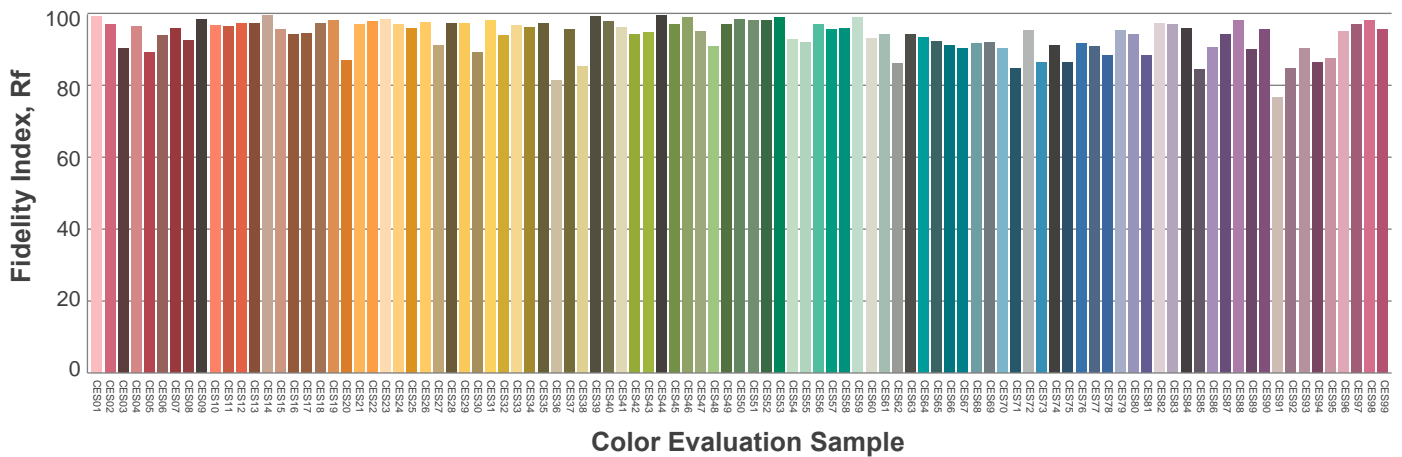
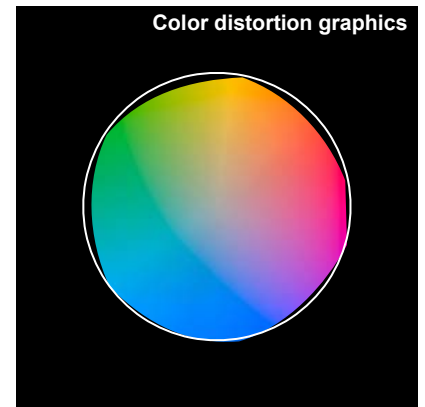
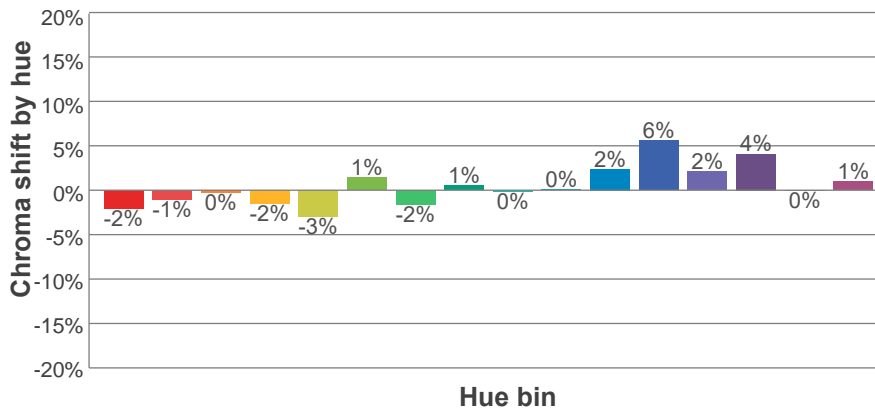
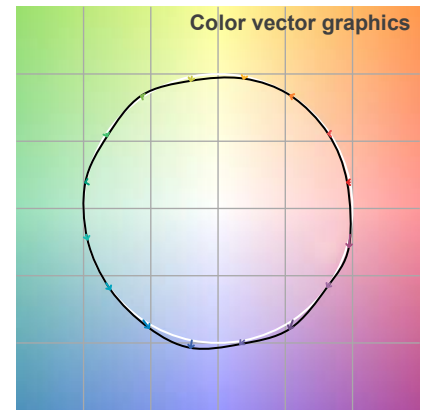
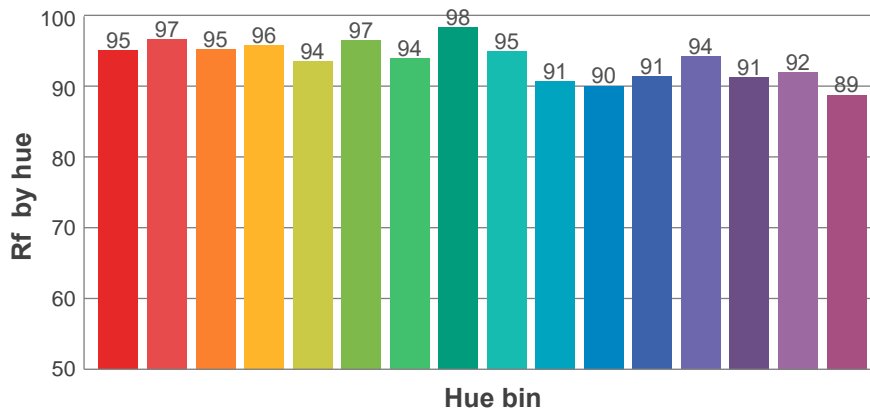
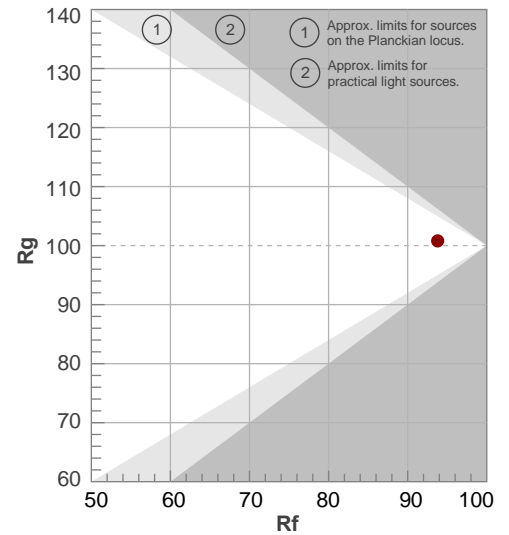
Rf 93.8

Fidelity index Rf

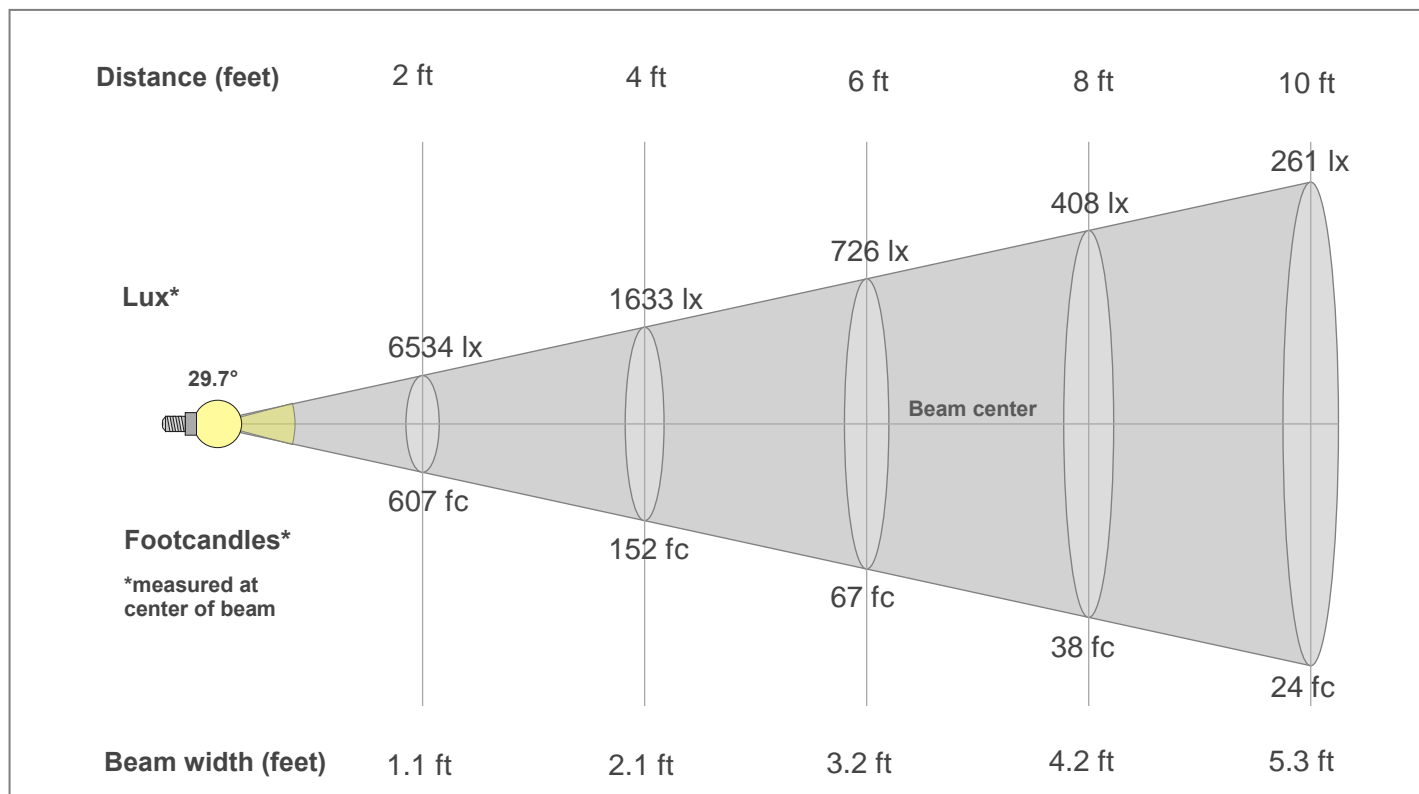
Rg 100.8

Gamut index Rg

Hue Bin	R _f	Shifts (%)	
		Chroma	Hue
1	95	-2%	0%
2	97	-1%	1%
3	95	0%	2%
4	96	-2%	0%
5	94	-3%	1%
6	97	1%	1%
7	94	-2%	1%
8	98	1%	0%
9	95	0%	4%
10	91	0%	5%
11	90	2%	7%
12	91	6%	0%
13	94	2%	-3%
14	91	4%	-5%
15	92	0%	-3%
16	89	1%	-9%



Beam Details



Beam Intensities from 1-20m

1m	2m	3m	4m	5m	6m	7m	8m	9m	10m	11m	12m	13m	14m	15m	16m	17m	18m	19m	20m
3.3ft	6.6ft	9.8ft	13.1ft	16.4ft	19.7ft	23ft	26.2ft	29.5ft	32.8ft	36.1ft	39.4ft	42.7ft	45.9ft	49.2ft	52.5ft	55.8ft	59.1ft	62.3ft	65.6ft
2428lx	607lx	270lx	152lx	97lx	67lx	50lx	38lx	30lx	24lx	20lx	17lx	14lx	12lx	11lx	9lx	8lx	7lx	7lx	6lx
225.6fc	56.4fc	25.1fc	14.1fc	9fc	6.3fc	4.6fc	3.5fc	2.8fc	2.3fc	1.9fc	1.6fc	1.3fc	1.2fc	1fc	0.9fc	0.8fc	0.7fc	0.6fc	0.6fc

Intensities in 0° c-plane

0°	2°	4°	6°	8°	10°	12°	14°	16°	18°	20°	22°	24°	26°	28°	30°	32°	34°	36°	38°
2428	2402	2308	2163	1980	1770	1542	1309	1083	876	696	547	432	340	272	220	179	147	121	100
100%	99%	95%	89%	82%	73%	64%	54%	45%	36%	29%	23%	18%	14%	11%	9%	7%	6%	5%	4%

Intensities in 90° c-plane

0°	2°	4°	6°	8°	10°	12°	14°	16°	18°	20°	22°	24°	26°	28°	30°	32°	34°	36°	38°
2428	2393	2300	2154	1974	1766	1541	1310	1085	877	696	543	424	332	263	211	170	139	114	94
100%	99%	95%	89%	81%	73%	63%	54%	45%	36%	29%	22%	17%	14%	11%	9%	7%	6%	5%	4%

Intensities in 180° c-plane

0°	2°	4°	6°	8°	10°	12°	14°	16°	18°	20°	22°	24°	26°	28°	30°	32°	34°	36°	38°
2428	2402	2308	2163	1980	1770	1542	1309	1083	876	696	547	432	340	272	220	179	147	121	100
100%	99%	95%	89%	82%	73%	64%	54%	45%	36%	29%	23%	18%	14%	11%	9%	7%	6%	5%	4%

Intensities in 270° c-plane

0°	2°	4°	6°	8°	10°	12°	14°	16°	18°	20°	22°	24°	26°	28°	30°	32°	34°	36°	38°
2428	2393	2300	2154	1974	1766	1541	1310	1085	877	696	543	424	332	263	211	170	139	114	94
100%	99%	95%	89%	81%	73%	63%	54%	45%	36%	29%	22%	17%	14%	11%	9%	7%	6%	5%	4%

Beam angle 50%	Field angle 10%	Cut-off angle 2.5%	Intensity ratio in 120°	Intensity ratio in 90°
29.7°	57.8°	84.3°	99.6%	97.8%