

Photometric / Colorimetric / Electric Report

Fixture Model:

805-J5-WD-4-25-PR1-8.5-350-FS-P-1-WH

Trim Model:

FS-P-1-WH

Date:

8/2/2024



Light efficiency:

53 Lumen/Watt

Light quality:

CRI: 96.7

Color temperature:

3010 K

CIE 1931:

**x: 0.435
y: 0.400**

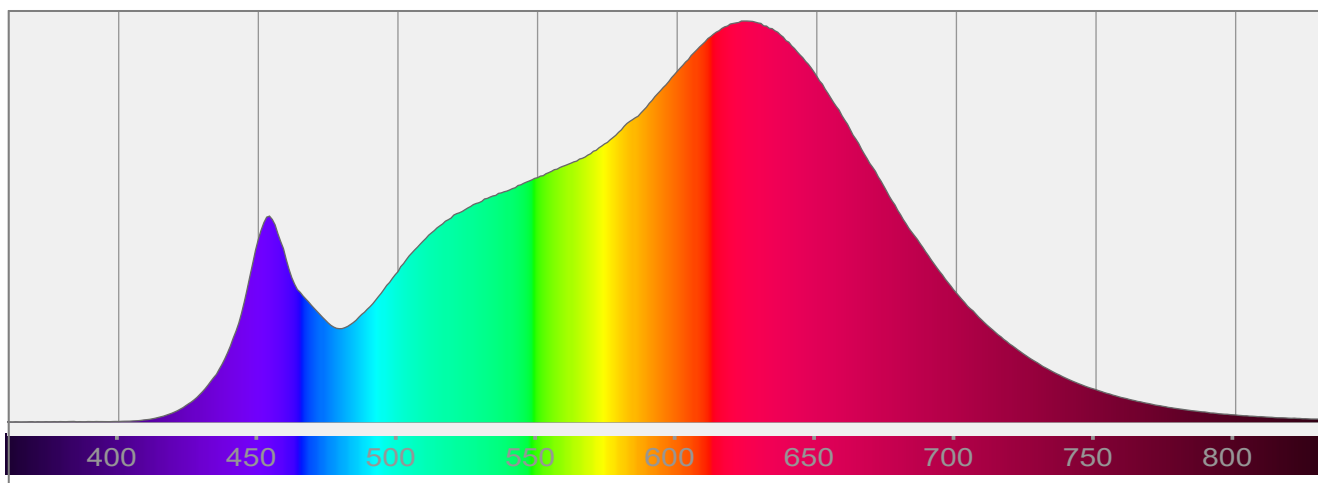
Output: 772 lm

Peak: 2558 cd

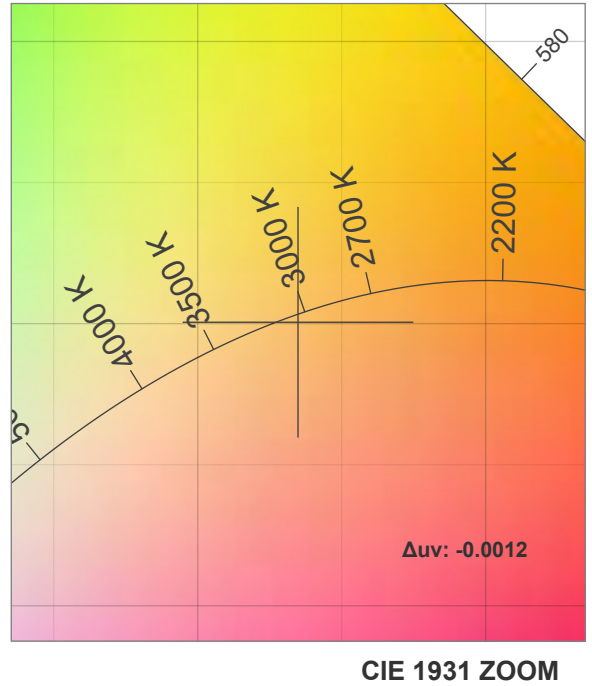
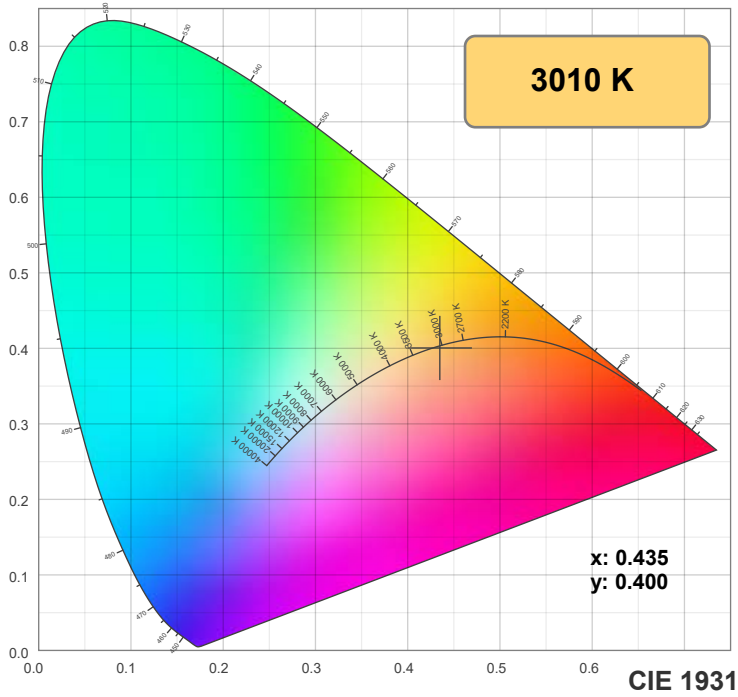
Power: 14.6 W

PF: 0.99

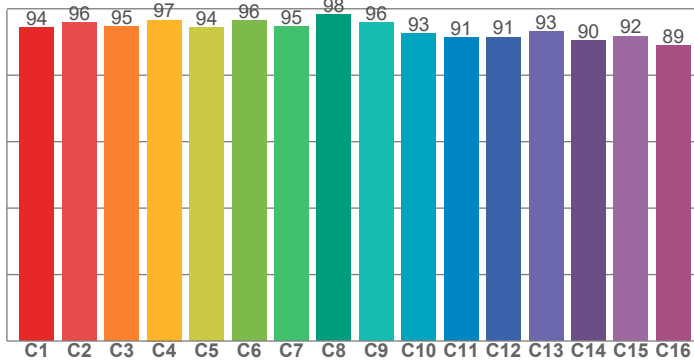
Spectra:



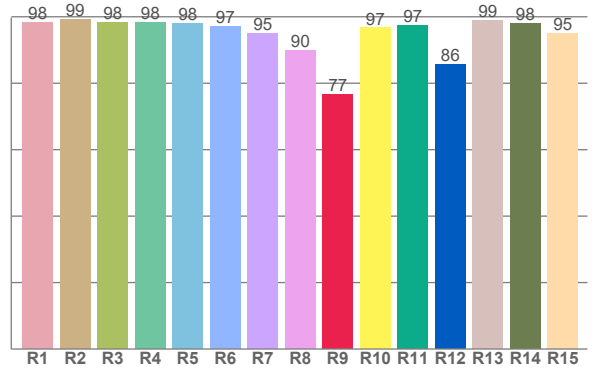
Color Details



TM-30: 94.0



CRI: 96.7 (R1-R8)



CRI R Values:

R1	R2	R3	R4	R5	R6	R7	R8	R9	R10	R11	R12	R13	R14	R15
98.3	99.1	98.2	98.3	98.1	97.0	94.9	89.7	76.6	96.6	97.3	85.7	99.0	98.0	95.0

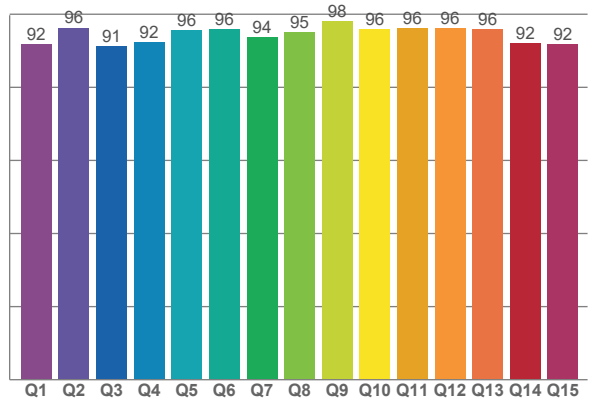
TM30 C Values:

C1	C2	C3	C4	C5	C6	C7	C8	C9	C10	C11	C12	C13	C14	C15	C16
94.3	95.9	94.6	96.6	94.4	96.5	94.7	98.3	95.9	92.6	91.3	91.5	93.1	90.5	91.8	88.8

CQS Q values:

Q1	Q2	Q3	Q4	Q5	Q6	Q7	Q8	Q9	Q10	Q11	Q12	Q13	Q14	Q15
91.8	96.3	91.3	92.2	95.6	96.0	93.6	95.1	98.2	95.9	96.2	96.1	95.8	92.0	91.8

CQS: 94.0



Color Parameters:

CCT	CRI	CRI R9	TM30 Rf	TM30 Rg	CQS	x	y	u	v	Δuv
3010 K	96.7	76.6	94.0	100.5	94.0	0.435	0.400	0.251	0.346	-0.0012

TM-30 Details

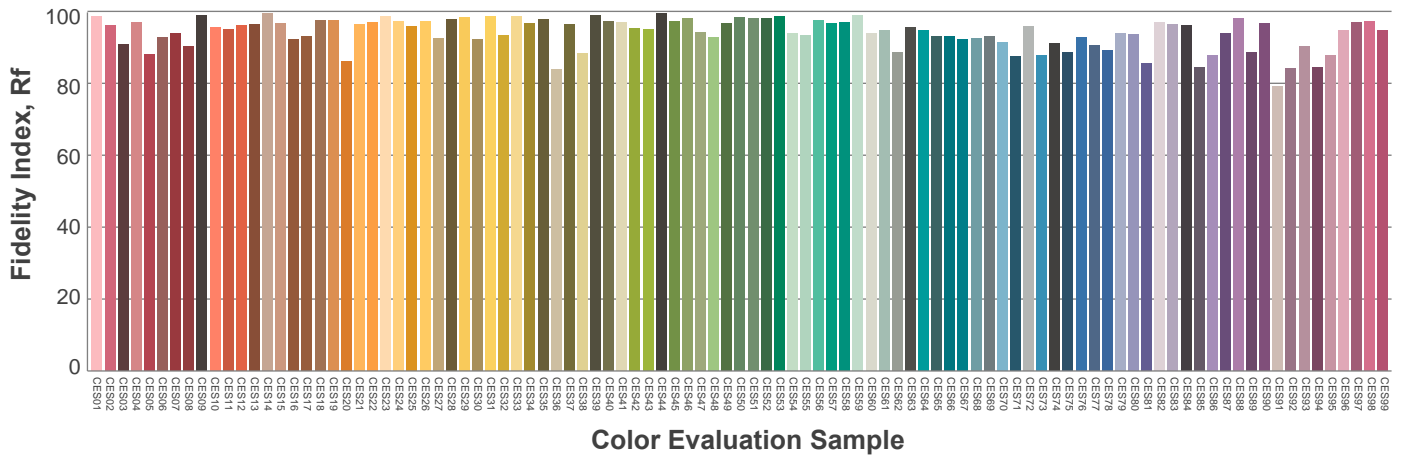
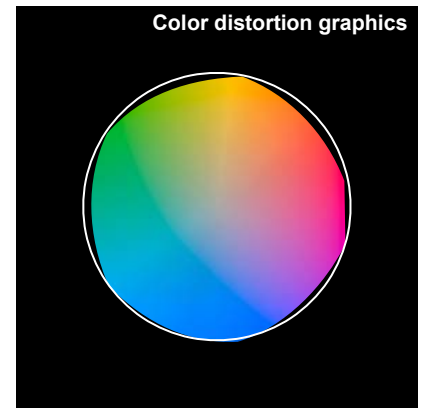
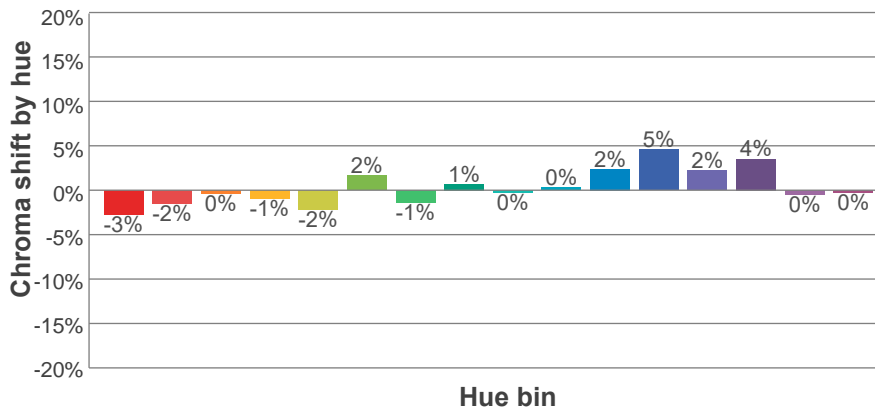
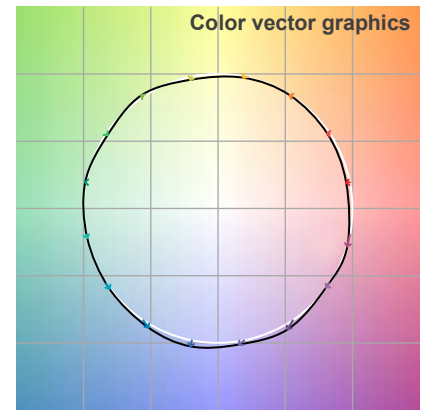
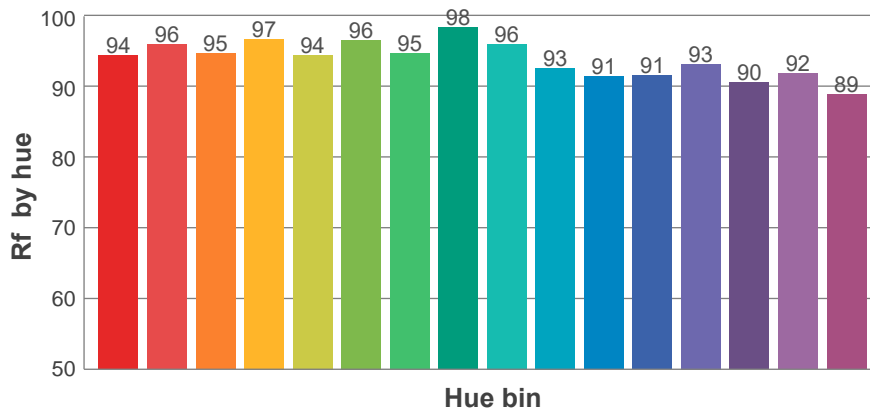
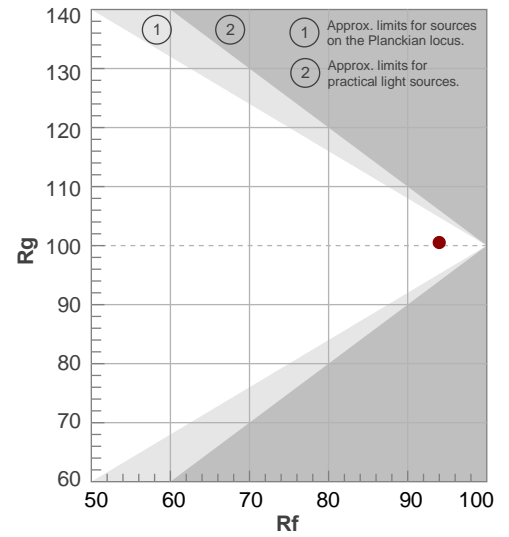
Rf 94.0

Fidelity index Rf

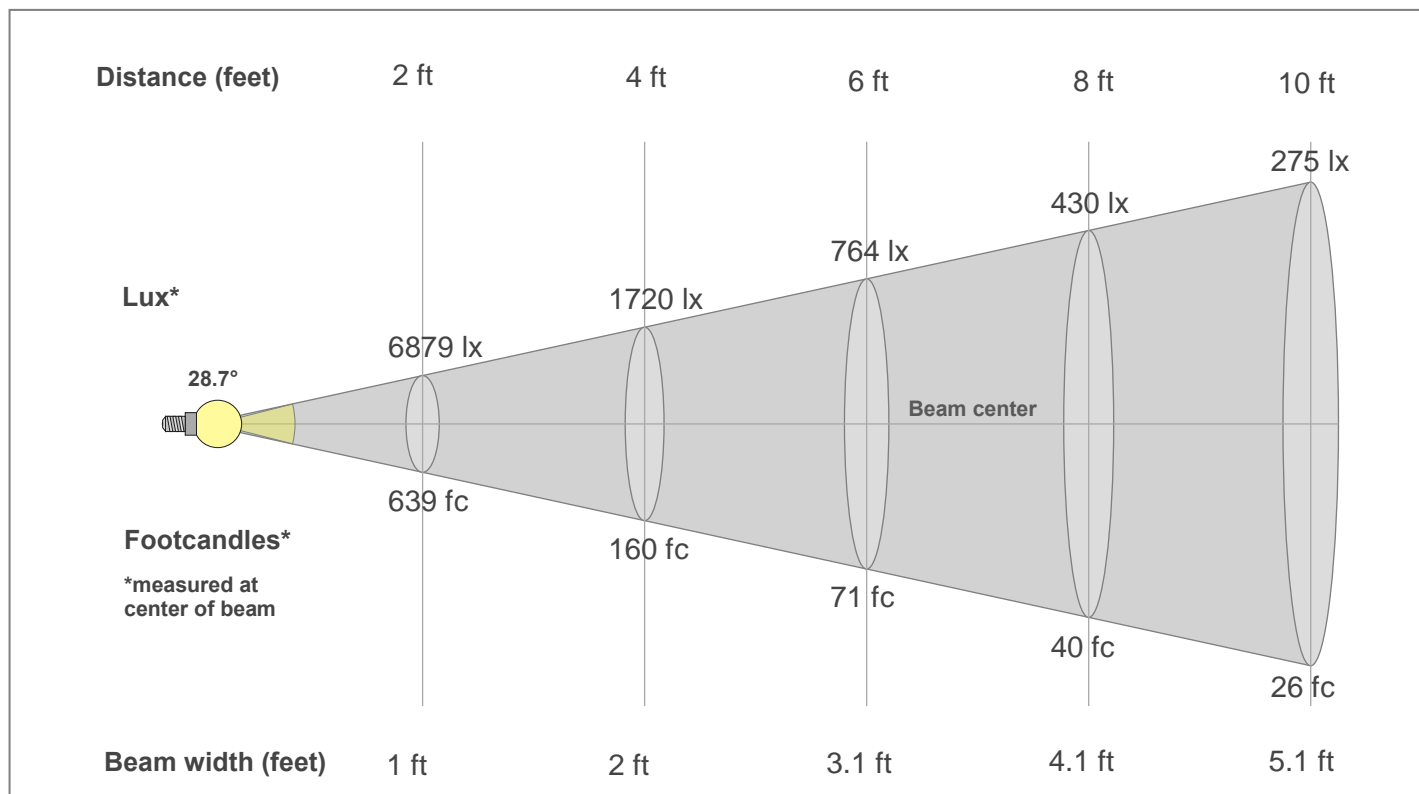
Rg 100.5

Gamut index Rg

Hue Bin	R _f	Shifts (%)	
		Chroma	Hue
1	94	-3%	0%
2	96	-2%	1%
3	95	0%	2%
4	97	-1%	0%
5	94	-2%	1%
6	96	2%	1%
7	95	-1%	0%
8	98	1%	0%
9	96	0%	2%
10	93	0%	5%
11	91	2%	6%
12	91	5%	0%
13	93	2%	-5%
14	90	4%	-7%
15	92	0%	-4%
16	89	0%	-9%



Beam Details



Beam Intensities from 1-20m

1m	2m	3m	4m	5m	6m	7m	8m	9m	10m	11m	12m	13m	14m	15m	16m	17m	18m	19m	20m
3.3ft	6.6ft	9.8ft	13.1ft	16.4ft	19.7ft	23ft	26.2ft	29.5ft	32.8ft	36.1ft	39.4ft	42.7ft	45.9ft	49.2ft	52.5ft	55.8ft	59.1ft	62.3ft	65.6ft
2556lx	639lx	284lx	160lx	102lx	71lx	52lx	40lx	32lx	26lx	21lx	18lx	15lx	13lx	11lx	10lx	9lx	8lx	7lx	6lx
237.5fc	59.4fc	26.4fc	14.8fc	9.5fc	6.6fc	4.8fc	3.7fc	2.9fc	2.4fc	2fc	1.6fc	1.4fc	1.2fc	1.1fc	0.9fc	0.8fc	0.7fc	0.7fc	0.6fc

Intensities in 0° c-plane

0°	2°	4°	6°	8°	10°	12°	14°	16°	18°	20°	22°	24°	26°	28°	30°	32°	34°	36°	38°
2556	2523	2420	2258	2055	1824	1576	1325	1084	867	680	526	409	317	247	191	143	103	71	47
100%	99%	95%	88%	80%	71%	62%	52%	42%	34%	27%	21%	16%	12%	10%	7%	6%	4%	3%	2%

Intensities in 90° c-plane

0°	2°	4°	6°	8°	10°	12°	14°	16°	18°	20°	22°	24°	26°	28°	30°	32°	34°	36°	38°
2556	2519	2416	2251	2047	1815	1568	1315	1074	855	669	514	396	305	237	182	136	97	68	45
100%	99%	94%	88%	80%	71%	61%	51%	42%	33%	26%	20%	15%	12%	9%	7%	5%	4%	3%	2%

Intensities in 180° c-plane

0°	2°	4°	6°	8°	10°	12°	14°	16°	18°	20°	22°	24°	26°	28°	30°	32°	34°	36°	38°
2556	2523	2420	2258	2055	1824	1576	1325	1084	867	680	526	409	317	247	191	143	103	71	47
100%	99%	95%	88%	80%	71%	62%	52%	42%	34%	27%	21%	16%	12%	10%	7%	6%	4%	3%	2%

Intensities in 270° c-plane

0°	2°	4°	6°	8°	10°	12°	14°	16°	18°	20°	22°	24°	26°	28°	30°	32°	34°	36°	38°
2556	2519	2416	2251	2047	1815	1568	1315	1074	855	669	514	396	305	237	182	136	97	68	45
100%	99%	94%	88%	80%	71%	61%	51%	42%	33%	26%	20%	15%	12%	9%	7%	5%	4%	3%	2%

Beam angle 50%	Field angle 10%	Cut-off angle 2.5%	Intensity ratio in 120°	Intensity ratio in 90°
28.7°	55.1°	72.8°	99.6%	98.9%