

Photometric / Colorimetric / Electric Report

Fixture Model:

805-J5-WD-4-15-PR1-8.5-350-FS-LG-P-1-WH-NL

Trim Model:

FS-LG-P-1-WH/NL

Date:

8/2/2024



Light efficiency:

65 Lumen/Watt

Light quality:

CRI: 96.7

Color temperature:

2996 K

CIE 1931:

**x: 0.436
y: 0.401**

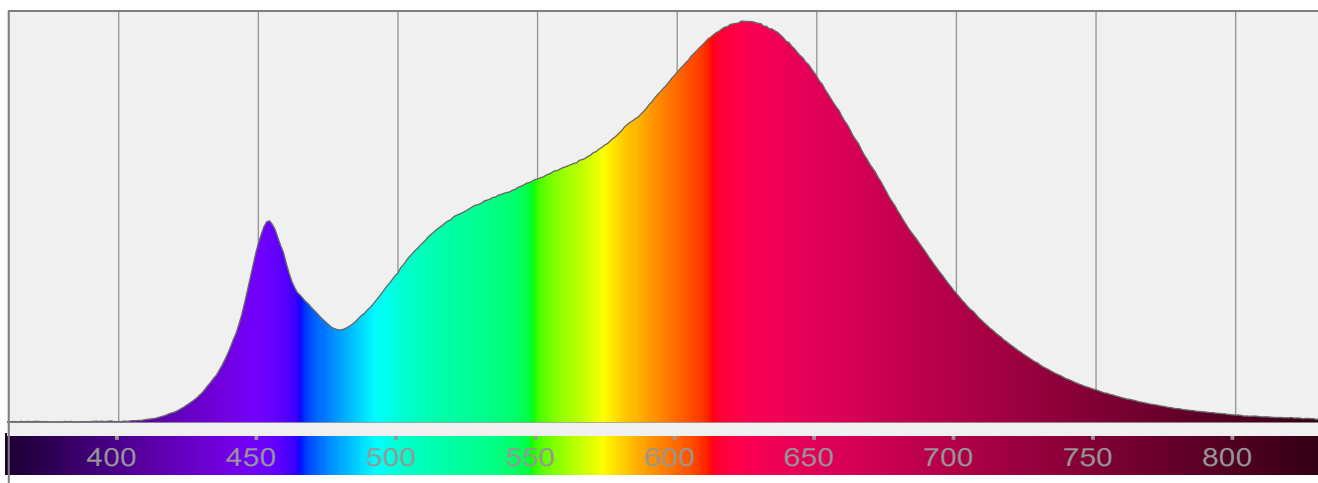
Output: 951 lm

Peak: 4089 cd

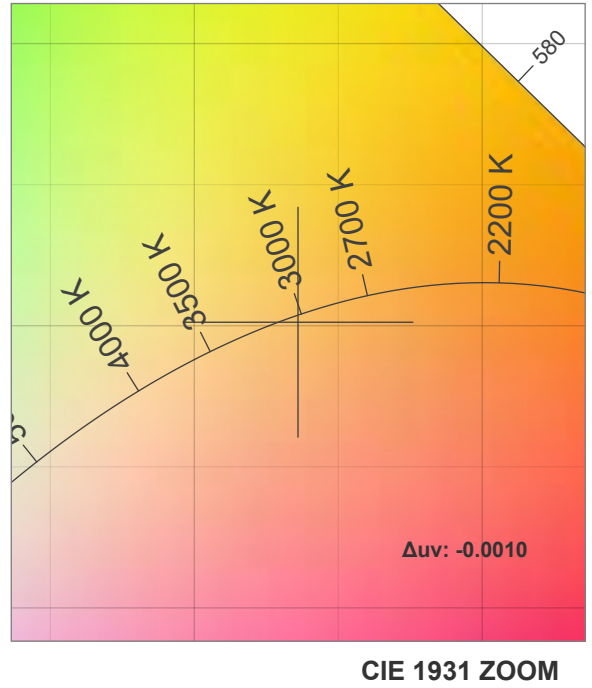
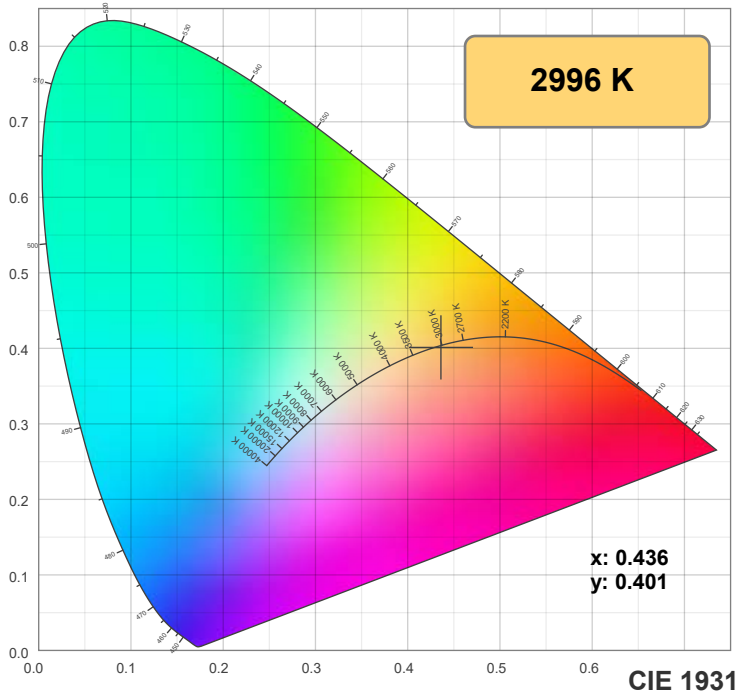
Power: 14.6 W

PF: 0.99

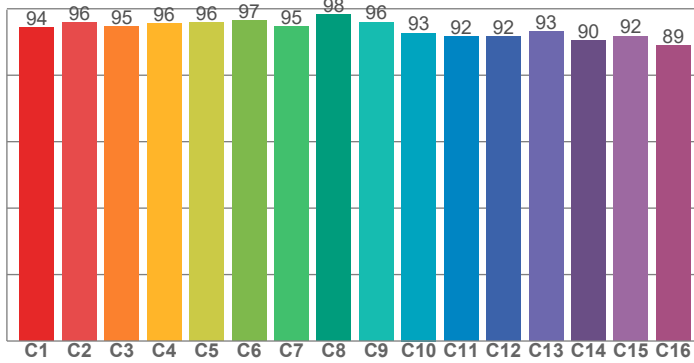
Spectra:



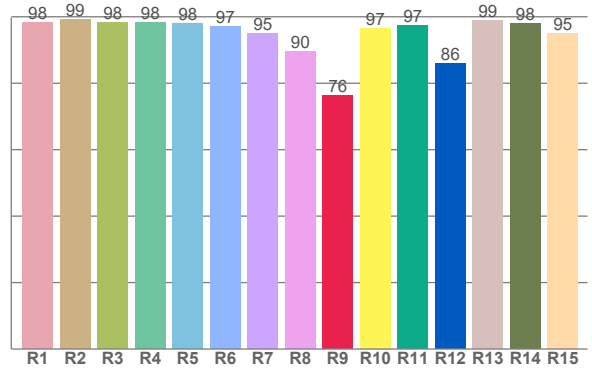
Color Details



TM-30: 94.0



CRI: 96.7 (R1-R8)



CRI R Values:

R1	R2	R3	R4	R5	R6	R7	R8	R9	R10	R11	R12	R13	R14	R15
98.3	99.1	98.2	98.3	98.1	97.1	94.9	89.6	76.4	96.6	97.3	86.0	98.9	98.1	94.9

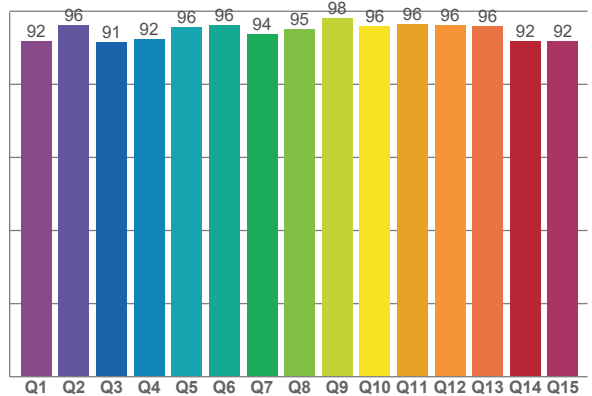
TM30 C Values:

C1	C2	C3	C4	C5	C6	C7	C8	C9	C10	C11	C12	C13	C14	C15	C16
94.3	95.9	94.7	95.5	95.8	96.6	94.7	98.3	96.0	92.7	91.5	91.5	93.0	90.5	91.8	88.9

CQS Q values:

Q1	Q2	Q3	Q4	Q5	Q6	Q7	Q8	Q9	Q10	Q11	Q12	Q13	Q14	Q15
91.7	96.2	91.5	92.4	95.7	96.0	93.7	95.1	98.2	96.0	96.3	96.2	95.8	91.9	91.7

CQS: 94.0



Color Parameters:

CCT	CRI	CRI R9	TM30 Rf	TM30 Rg	CQS	x	y	u	v	Δuv
2996 K	96.7	76.4	94.0	100.5	94.0	0.436	0.401	0.251	0.347	-0.0010

TM-30 Details

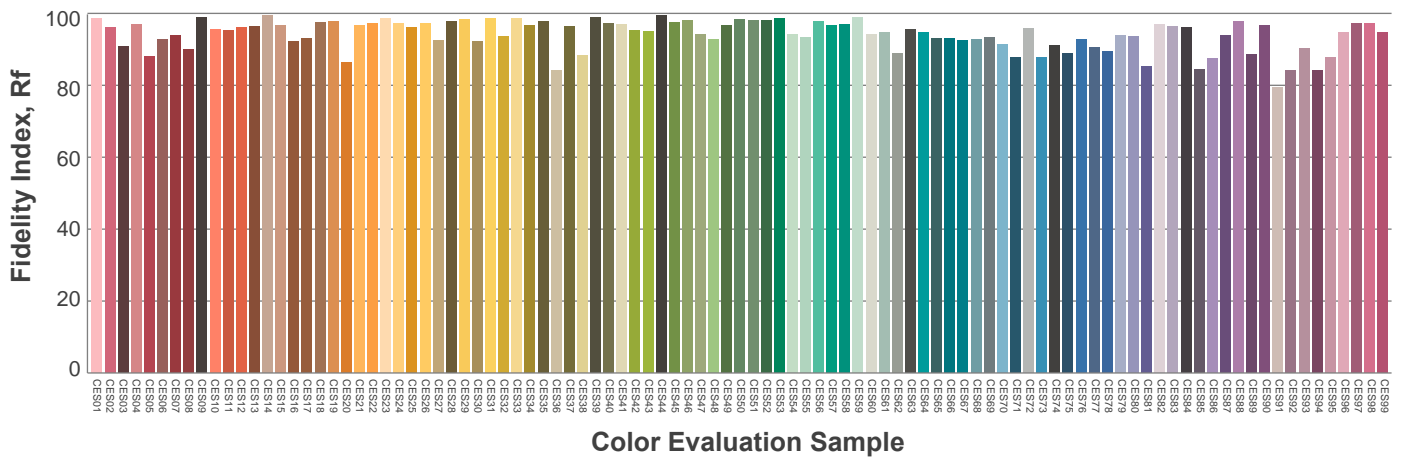
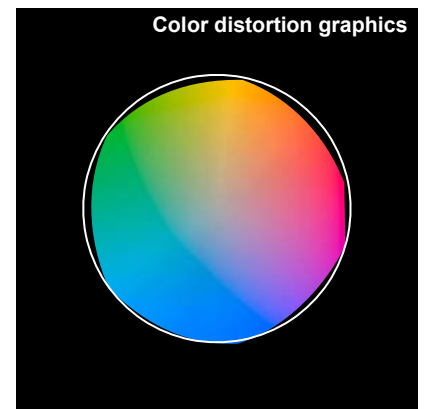
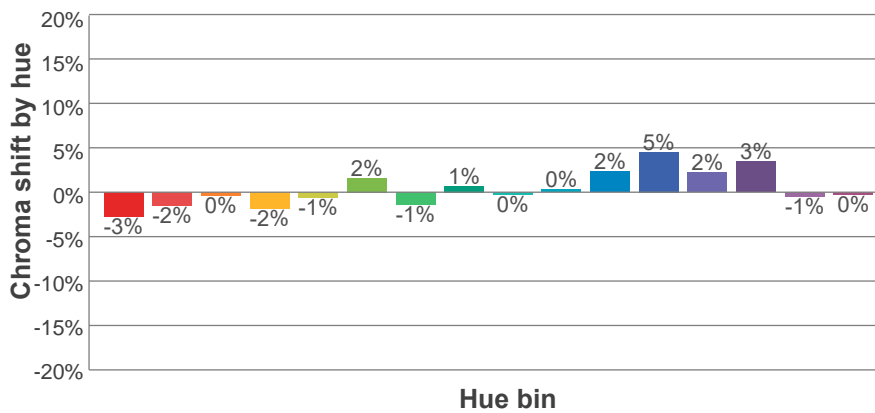
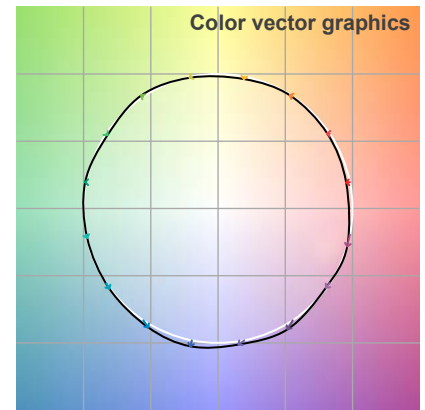
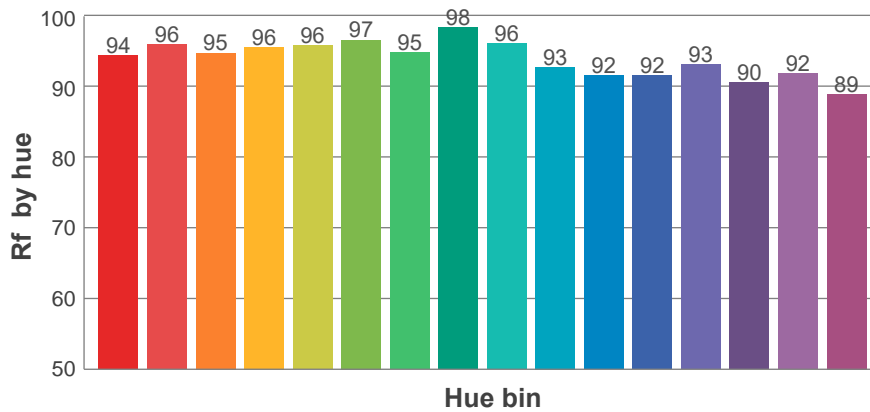
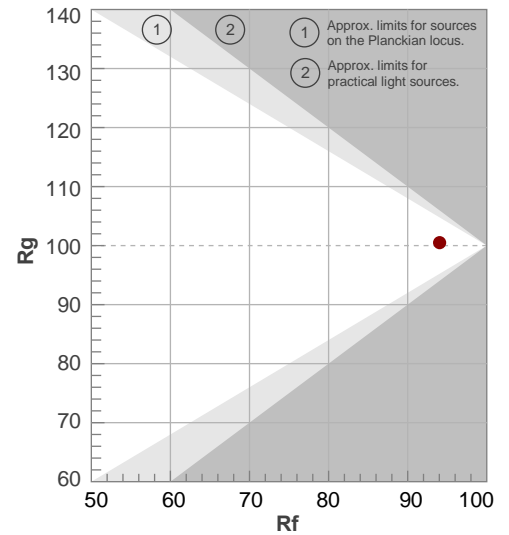
Rf 94.0

Fidelity index Rf

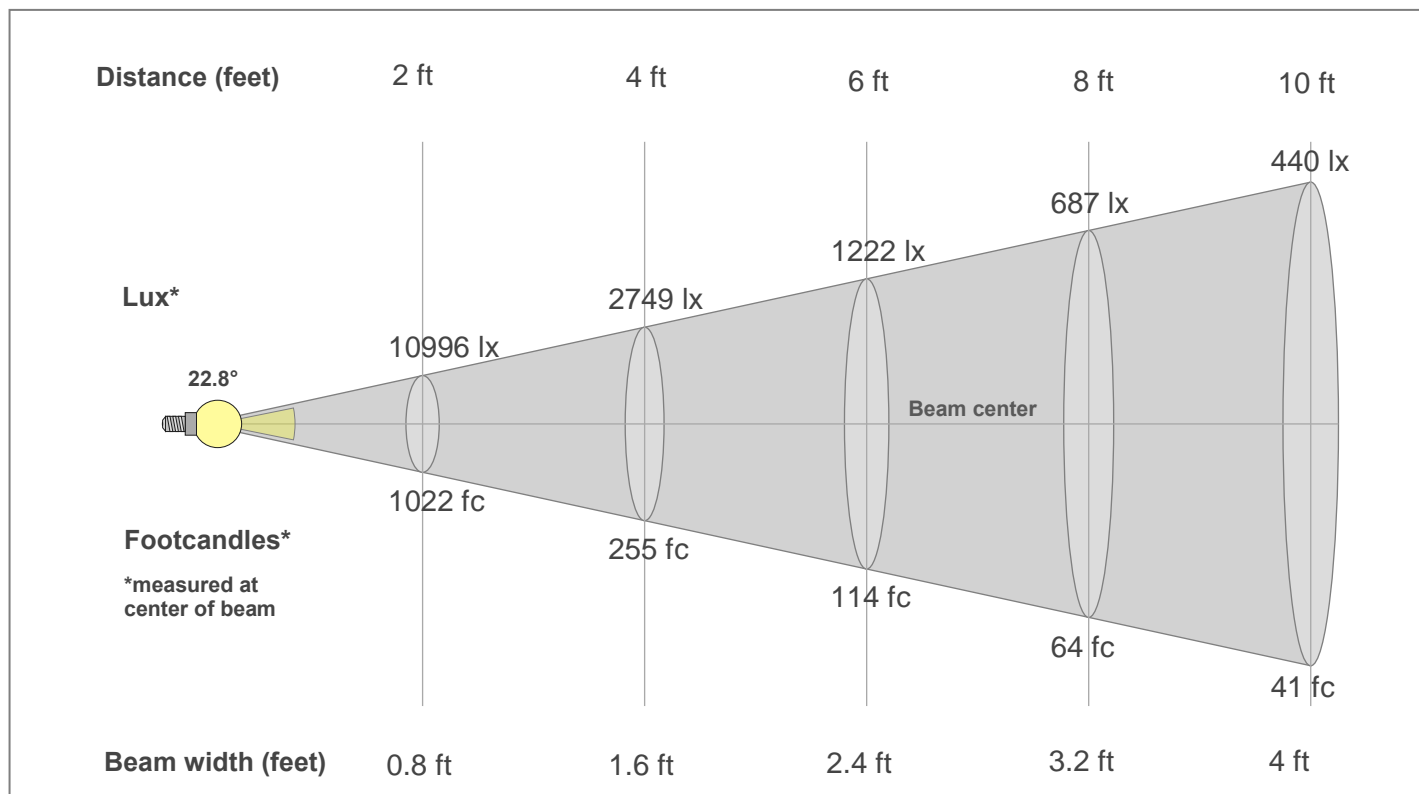
Rg 100.5

Gamut index Rg

Hue Bin	R _f	Shifts (%)	
		Chroma	Hue
1	94	-3%	0%
2	96	-2%	1%
3	95	0%	2%
4	96	-2%	0%
5	96	-1%	2%
6	97	2%	1%
7	95	-1%	0%
8	98	1%	0%
9	96	0%	2%
10	93	0%	5%
11	92	2%	6%
12	92	5%	0%
13	93	2%	-5%
14	90	3%	-7%
15	92	-1%	-4%
16	89	0%	-9%



Beam Details



Beam Intensities from 1-20m

1m	2m	3m	4m	5m	6m	7m	8m	9m	10m	11m	12m	13m	14m	15m	16m	17m	18m	19m	20m
3.3ft	6.6ft	9.8ft	13.1ft	16.4ft	19.7ft	23ft	26.2ft	29.5ft	32.8ft	36.1ft	39.4ft	42.7ft	45.9ft	49.2ft	52.5ft	55.8ft	59.1ft	62.3ft	65.6ft
4086lx	1022lx	454lx	255lx	163lx	114lx	83lx	64lx	50lx	41lx	34lx	28lx	24lx	21lx	18lx	16lx	14lx	13lx	11lx	10lx
379.6fc	94.9fc	42.2fc	23.7fc	15.2fc	10.5fc	7.7fc	5.9fc	4.7fc	3.8fc	3.1fc	2.6fc	2.2fc	1.9fc	1.7fc	1.5fc	1.3fc	1.2fc	1.1fc	0.9fc

Intensities in 0° c-plane

0°	2°	4°	6°	8°	10°	12°	14°	16°	18°	20°	22°	24°	26°	28°	30°	32°	34°	36°	38°
4086	4014	3785	3407	2916	2387	1889	1475	1145	887	686	528	410	321	256	205	165	132	105	85
100%	98%	93%	83%	71%	58%	46%	36%	28%	22%	17%	13%	10%	8%	6%	5%	4%	3%	3%	2%

Intensities in 90° c-plane

0°	2°	4°	6°	8°	10°	12°	14°	16°	18°	20°	22°	24°	26°	28°	30°	32°	34°	36°	38°
4086	4019	3812	3445	2959	2422	1906	1460	1114	852	653	503	389	303	241	193	155	125	100	81
100%	98%	93%	84%	72%	59%	47%	36%	27%	21%	16%	12%	10%	7%	6%	5%	4%	3%	2%	2%

Intensities in 180° c-plane

0°	2°	4°	6°	8°	10°	12°	14°	16°	18°	20°	22°	24°	26°	28°	30°	32°	34°	36°	38°
4086	4014	3785	3407	2916	2387	1889	1475	1145	887	686	528	410	321	256	205	165	132	105	85
100%	98%	93%	83%	71%	58%	46%	36%	28%	22%	17%	13%	10%	8%	6%	5%	4%	3%	3%	2%

Intensities in 270° c-plane

0°	2°	4°	6°	8°	10°	12°	14°	16°	18°	20°	22°	24°	26°	28°	30°	32°	34°	36°	38°
4086	4019	3812	3445	2959	2422	1906	1460	1114	852	653	503	389	303	241	193	155	125	100	81
100%	98%	93%	84%	72%	59%	47%	36%	27%	21%	16%	12%	10%	7%	6%	5%	4%	3%	2%	2%

Beam angle 50%	Field angle 10%	Cut-off angle 2.5%	Intensity ratio in 120°	Intensity ratio in 90°
22.8°	47.6°	72.1°	99.4%	97.8%