

## Photometric / Colorimetric / Electric Report

Fixture Model:

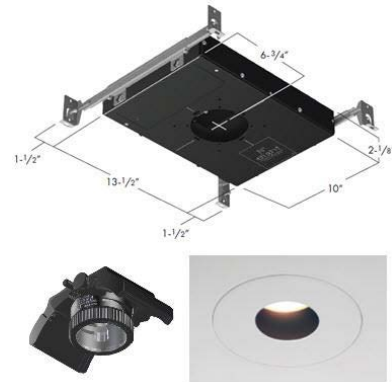
**805-J5-WD-4-40-PR1-8.5-350-FR-P-1-WH**

Trim Model:

**FR-P-1-WH**

Date:

**8/2/2024**



Light efficiency:

**59 Lumen/Watt**

Light quality:

**CRI: 96.6**

Color temperature:

**3003 K**

CIE 1931:

**x: 0.436  
y: 0.402**

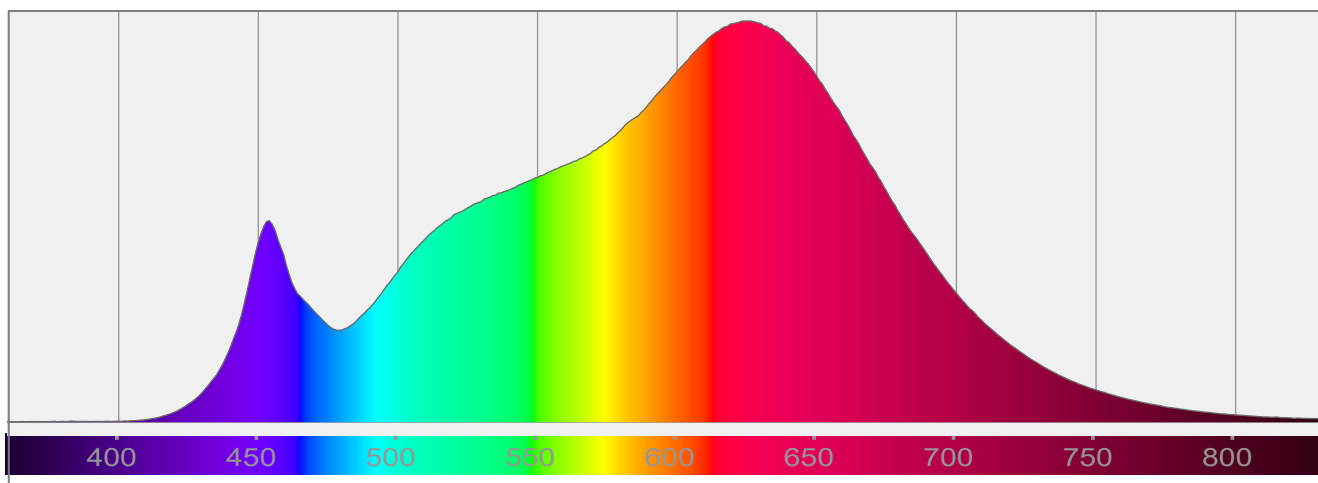
**Output: 858 lm**

**Peak: 1876 cd**

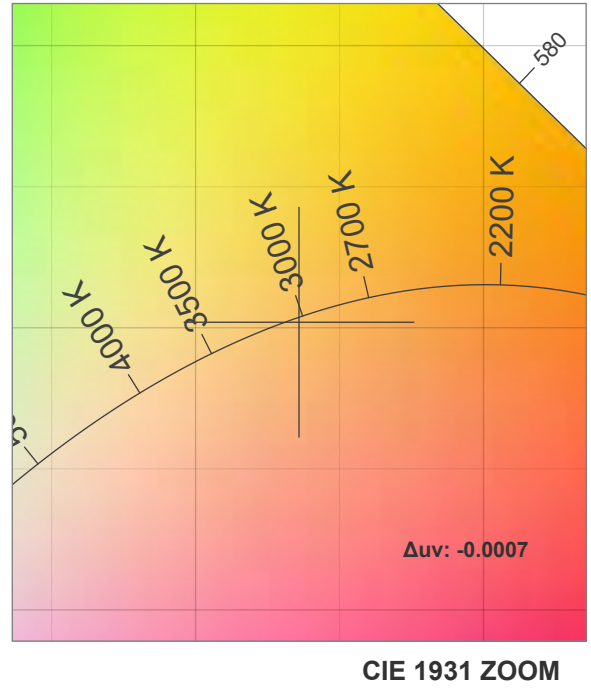
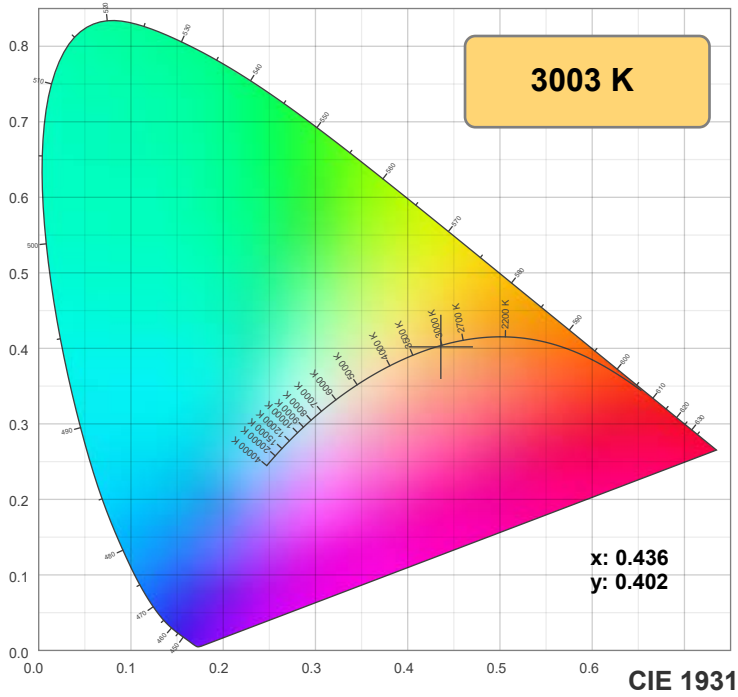
**Power: 14.7 W**

**PF: 0.99**

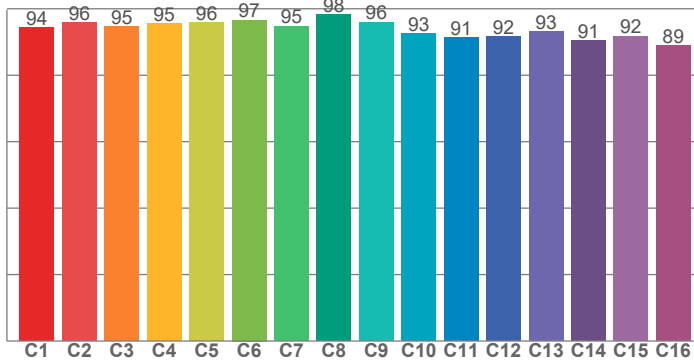
Spectra:



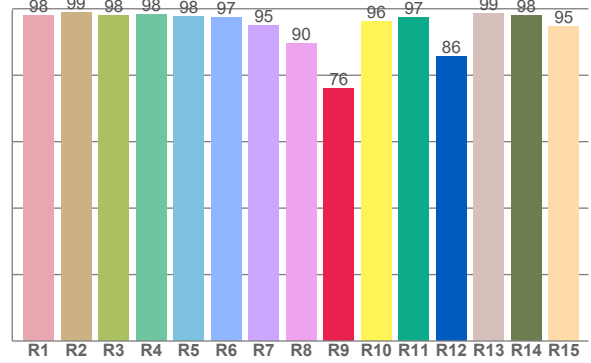
## Color Details



TM-30: 94.0



CRI: 96.6 (R1-R8)



CRI R Values:

R1	R2	R3	R4	R5	R6	R7	R8	R9	R10	R11	R12	R13	R14	R15
98.1	98.9	98.0	98.3	97.8	97.3	95.0	89.5	75.9	96.1	97.4	85.6	98.7	98.0	94.6

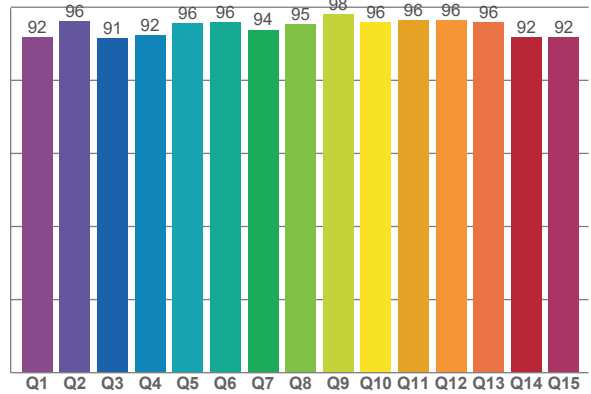
TM30 C Values:

C1	C2	C3	C4	C5	C6	C7	C8	C9	C10	C11	C12	C13	C14	C15	C16
94.3	95.9	94.7	95.5	95.7	96.6	94.8	98.3	96.0	92.6	91.4	91.5	93.1	90.5	91.8	88.9

CQS Q values:

Q1	Q2	Q3	Q4	Q5	Q6	Q7	Q8	Q9	Q10	Q11	Q12	Q13	Q14	Q15
91.7	96.2	91.5	92.4	95.6	96.0	93.8	95.3	98.1	96.0	96.4	96.3	96.0	91.8	91.7

CQS: 94.0



Color Parameters:

CCT	CRI	CRI R9	TM30 Rf	TM30 Rg	CQS	x	y	u	v	$\Delta uv$
3003 K	96.6	75.9	94.0	100.4	94.0	0.436	0.402	0.251	0.347	-0.0007

# TM-30 Details

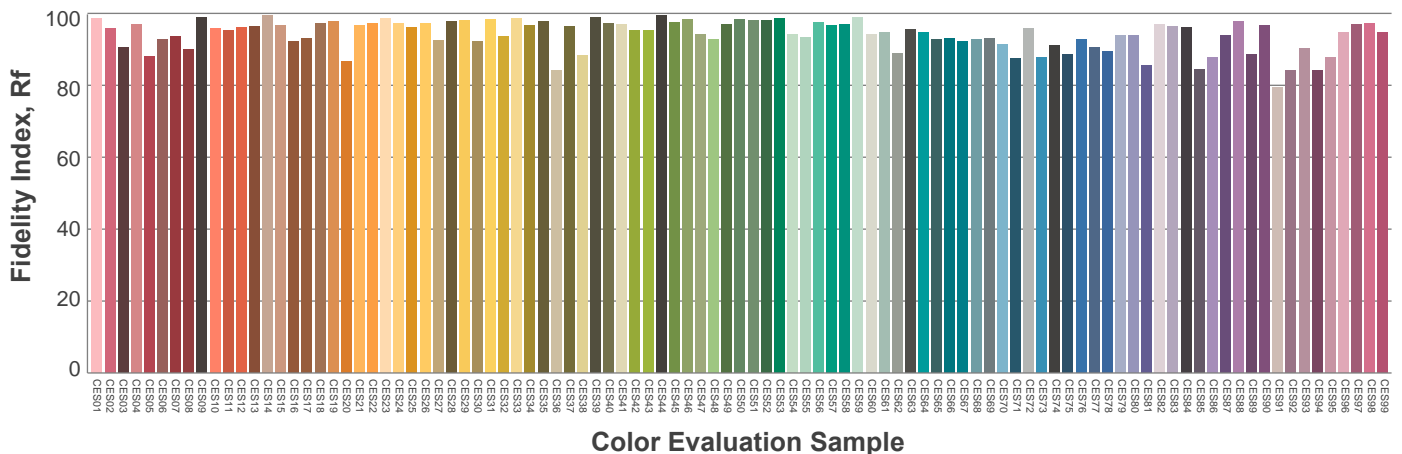
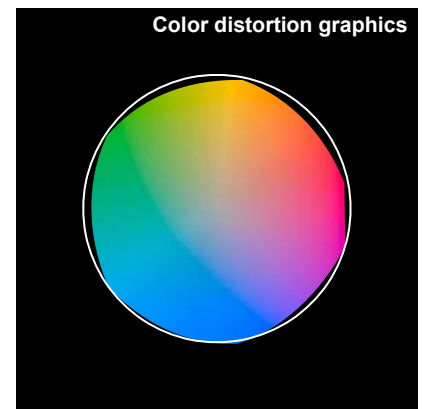
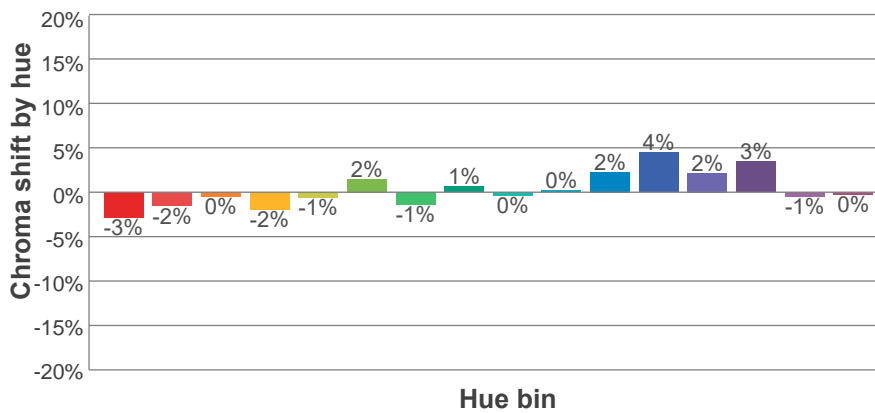
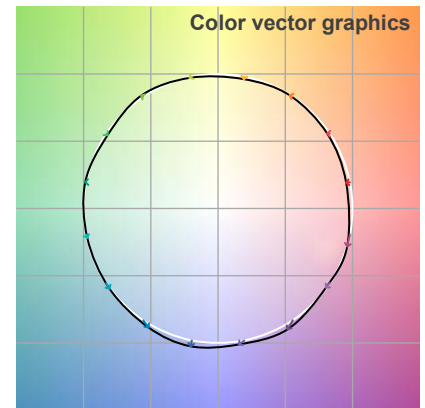
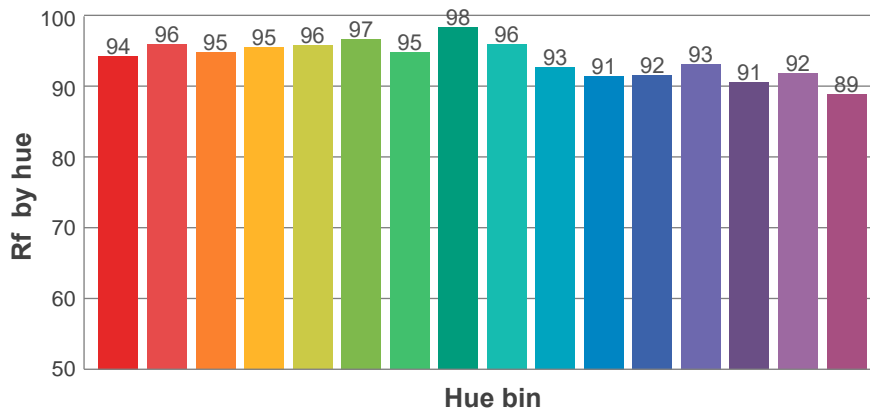
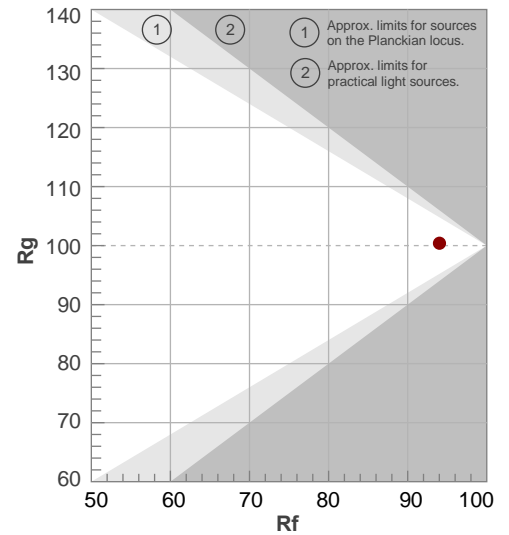
**Rf 94.0**

Fidelity index Rf

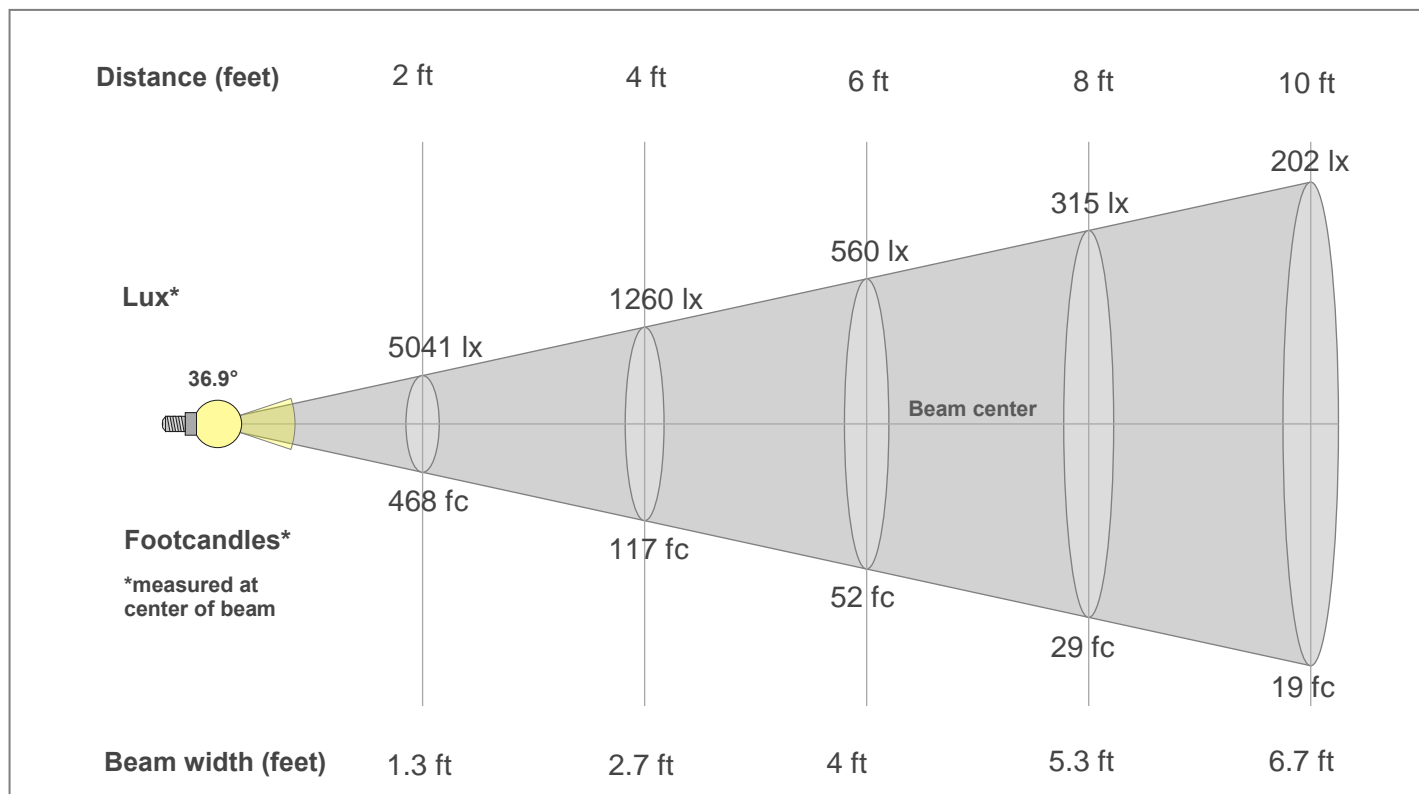
**Rg 100.4**

Gamut index Rg

Hue Bin	R <sub>f</sub>	Shifts (%)	
		Chroma	Hue
1	94	-3%	0%
2	96	-2%	1%
3	95	0%	2%
4	95	-2%	0%
5	96	-1%	2%
6	97	2%	1%
7	95	-1%	0%
8	98	1%	0%
9	96	0%	2%
10	93	0%	5%
11	91	2%	6%
12	92	4%	0%
13	93	2%	-5%
14	91	3%	-7%
15	92	-1%	-4%
16	89	0%	-9%



## Beam Details



### Beam Intensities from 1-20m

1m	2m	3m	4m	5m	6m	7m	8m	9m	10m	11m	12m	13m	14m	15m	16m	17m	18m	19m	20m
3.3ft	6.6ft	9.8ft	13.1ft	16.4ft	19.7ft	23ft	26.2ft	29.5ft	32.8ft	36.1ft	39.4ft	42.7ft	45.9ft	49.2ft	52.5ft	55.8ft	59.1ft	62.3ft	65.6ft
1873lx	468lx	208lx	117lx	75lx	52lx	38lx	29lx	23lx	19lx	15lx	13lx	11lx	10lx	8lx	7lx	6lx	6lx	5lx	5lx
174fc	43.5fc	19.3fc	10.9fc	7fc	4.8fc	3.6fc	2.7fc	2.1fc	1.7fc	1.4fc	1.2fc	1fc	0.9fc	0.8fc	0.7fc	0.6fc	0.5fc	0.5fc	0.4fc

### Intensities in 0° c-plane

0°	2°	4°	6°	8°	10°	12°	14°	16°	18°	20°	22°	24°	26°	28°	30°	32°	34°	36°	38°
1873	1862	1816	1745	1652	1539	1412	1273	1125	974	829	691	566	453	361	284	218	167	126	95
100%	99%	97%	93%	88%	82%	75%	68%	60%	52%	44%	37%	30%	24%	19%	15%	12%	9%	7%	5%

### Intensities in 90° c-plane

0°	2°	4°	6°	8°	10°	12°	14°	16°	18°	20°	22°	24°	26°	28°	30°	32°	34°	36°	38°
1873	1857	1813	1744	1648	1535	1408	1268	1120	968	821	682	557	447	356	280	216	164	124	94
100%	99%	97%	93%	88%	82%	75%	68%	60%	52%	44%	36%	30%	24%	19%	15%	12%	9%	7%	5%

### Intensities in 180° c-plane

0°	2°	4°	6°	8°	10°	12°	14°	16°	18°	20°	22°	24°	26°	28°	30°	32°	34°	36°	38°
1873	1862	1816	1745	1652	1539	1412	1273	1125	974	829	691	566	453	361	284	218	167	126	95
100%	99%	97%	93%	88%	82%	75%	68%	60%	52%	44%	37%	30%	24%	19%	15%	12%	9%	7%	5%

### Intensities in 270° c-plane

0°	2°	4°	6°	8°	10°	12°	14°	16°	18°	20°	22°	24°	26°	28°	30°	32°	34°	36°	38°
1873	1857	1813	1744	1648	1535	1408	1268	1120	968	821	682	557	447	356	280	216	164	124	94
100%	99%	97%	93%	88%	82%	75%	68%	60%	52%	44%	36%	30%	24%	19%	15%	12%	9%	7%	5%

Beam angle 50%	Field angle 10%	Cut-off angle 2.5%	Intensity ratio in 120°	Intensity ratio in 90°
36.9°	66.2°	86.3°	99.5%	97.4%