

## Photometric / Colorimetric / Electric Report

Fixture Model:

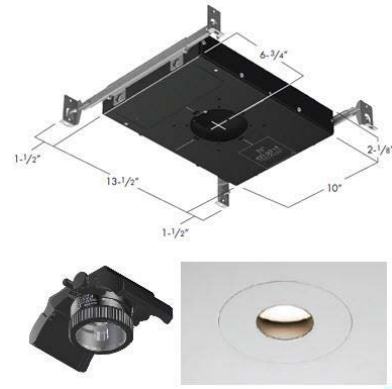
**805-J5-WD-4-40-PR1-8.5-350-FR-P-1-WH-WW-8**

Trim Model:

**FR-P-1-WH-WW-8**

Date:

**8/2/2024**



Light efficiency:

**42 Lumen/Watt**

Light quality:

**CRI: 96.7**

Color temperature:

**2999 K**

CIE 1931:

**x: 0.436  
y: 0.402**

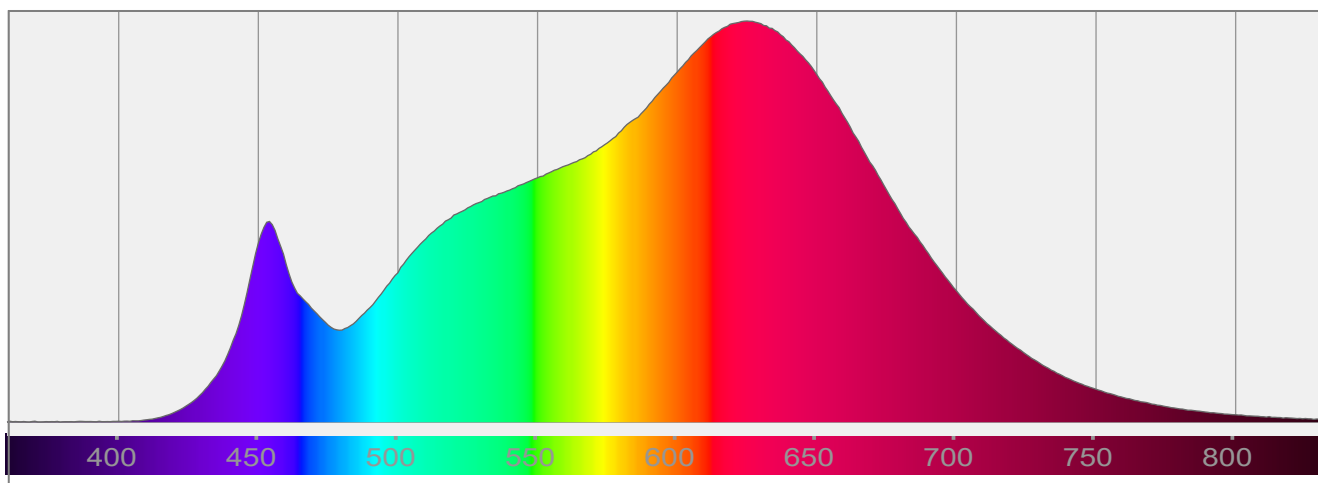
**Output: 614 lm**

**Peak: 417 cd**

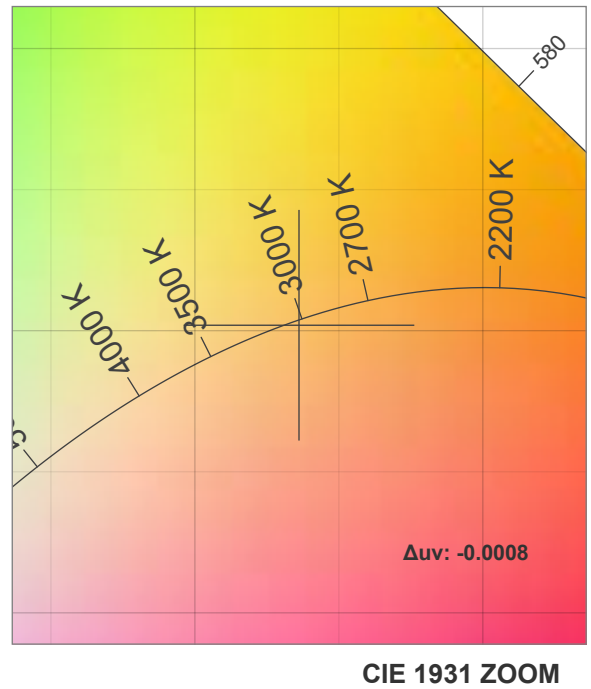
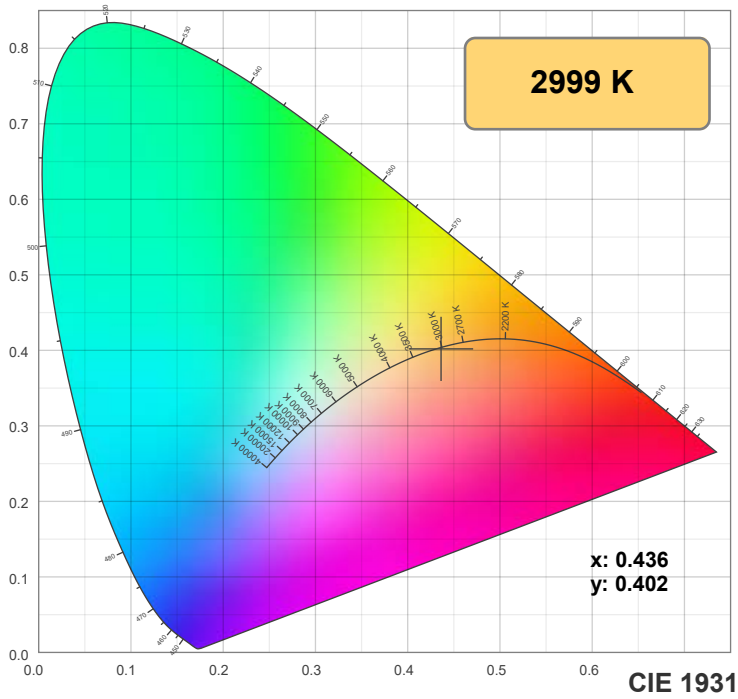
**Power: 14.6 W**

**PF: 0.99**

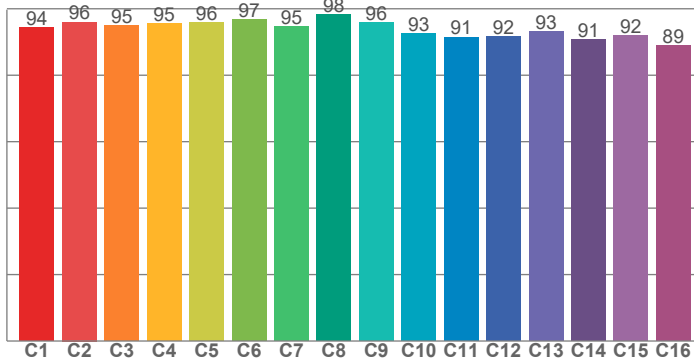
Spectra:



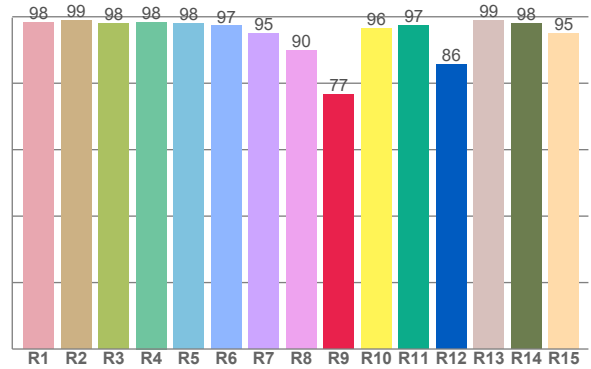
## Color Details



**TM-30: 94.1**



**CRI: 96.7 (R1-R8)**



**CRI R Values:**

R1	R2	R3	R4	R5	R6	R7	R8	R9	R10	R11	R12	R13	R14	R15
98.3	99.0	98.0	98.4	98.0	97.2	95.1	89.9	76.7	96.4	97.3	85.7	98.9	97.9	94.9

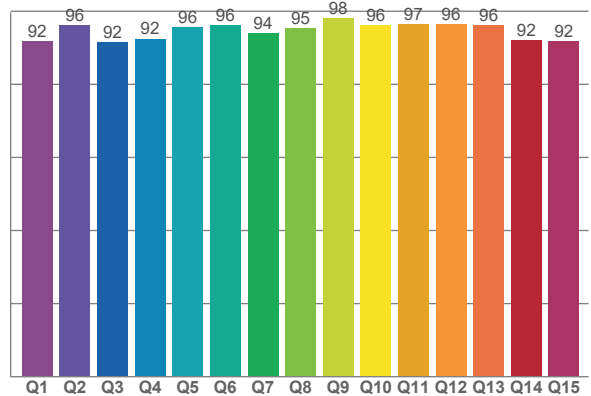
**TM30 C Values:**

C1	C2	C3	C4	C5	C6	C7	C8	C9	C10	C11	C12	C13	C14	C15	C16
94.4	96.0	94.9	95.5	95.8	96.7	94.7	98.3	96.0	92.6	91.5	91.6	93.2	90.6	91.8	88.9

**CQS Q values:**

Q1	Q2	Q3	Q4	Q5	Q6	Q7	Q8	Q9	Q10	Q11	Q12	Q13	Q14	Q15
91.8	96.3	91.6	92.5	95.7	96.1	93.9	95.4	98.1	96.1	96.5	96.5	96.1	92.0	91.9

**CQS: 94.1**



**Color Parameters:**

CCT	CRI	CRI R9	TM30 Rf	TM30 Rg	CQS	x	y	u	v	Δuv
2999 K	96.7	76.7	94.1	100.4	94.1	0.436	0.402	0.251	0.347	-0.0008

# TM-30 Details

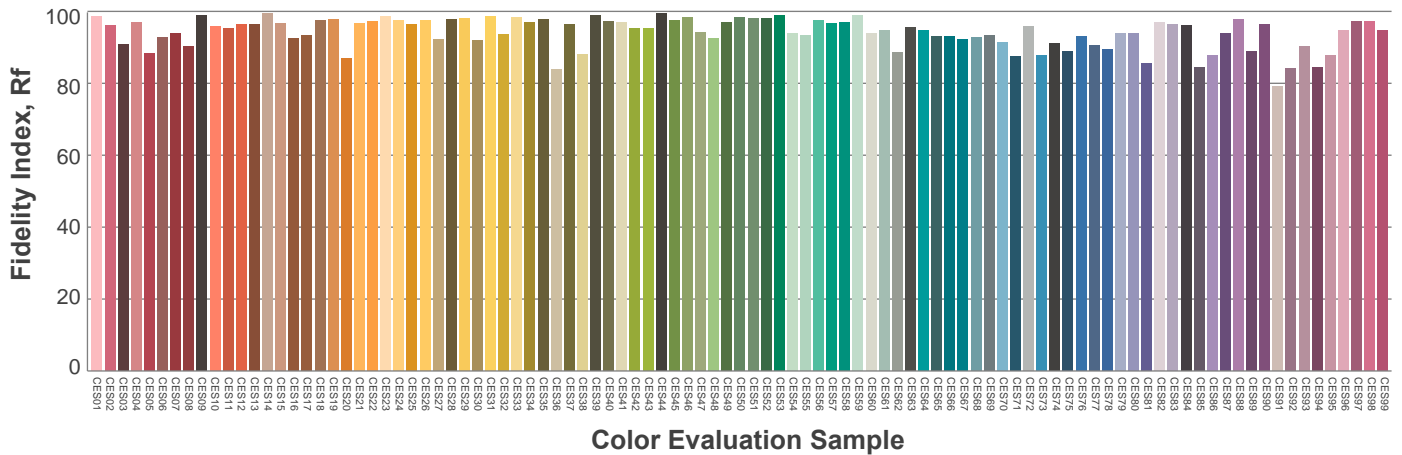
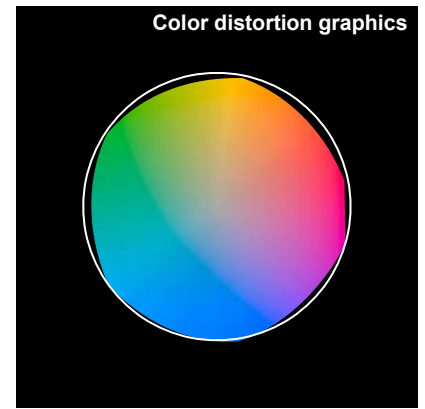
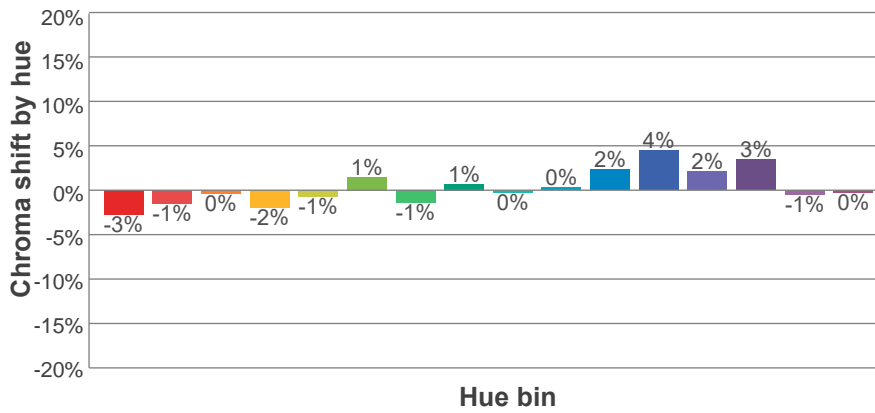
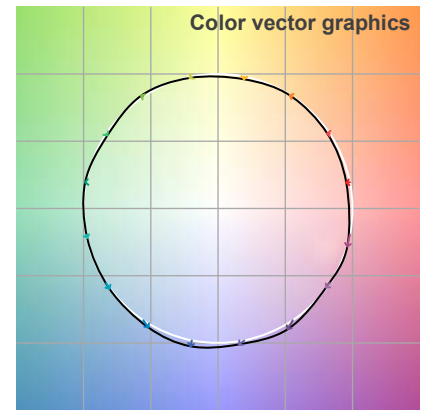
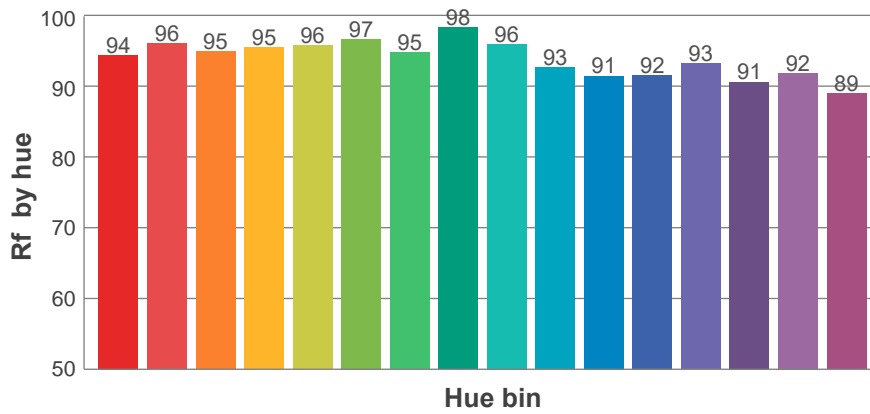
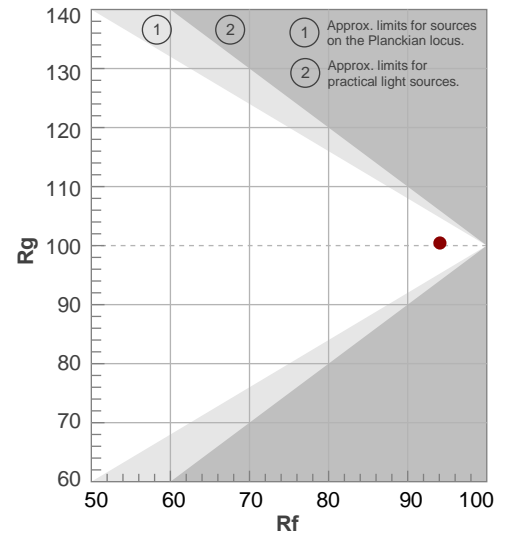
**Rf 94.1**

Fidelity index Rf

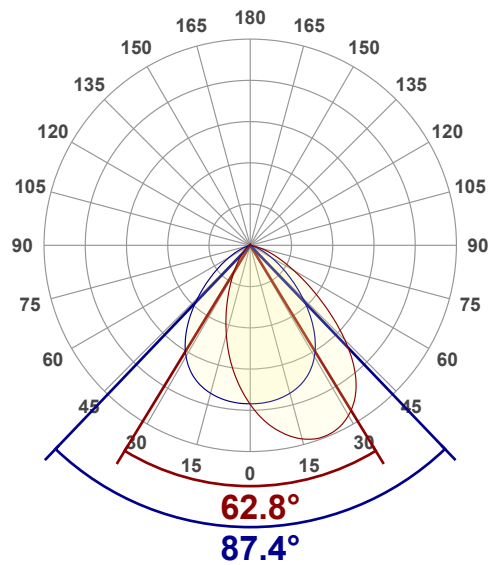
**Rg 100.4**

Gamut index Rg

Hue Bin	R <sub>f</sub>	Shifts (%)	
		Chroma	Hue
1	94	-3%	0%
2	96	-1%	1%
3	95	0%	2%
4	95	-2%	0%
5	96	-1%	2%
6	97	1%	1%
7	95	-1%	0%
8	98	1%	0%
9	96	0%	2%
10	93	0%	5%
11	91	2%	6%
12	92	4%	0%
13	93	2%	-5%
14	91	3%	-7%
15	92	-1%	-4%
16	89	0%	-9%



## Angular Distribution Through 0° and 90° Planes



**Beam Angle: 87.4°W x 62.8°L**

## Beam Details

