

## Photometric / Colorimetric / Electric Report

Fixture Model:

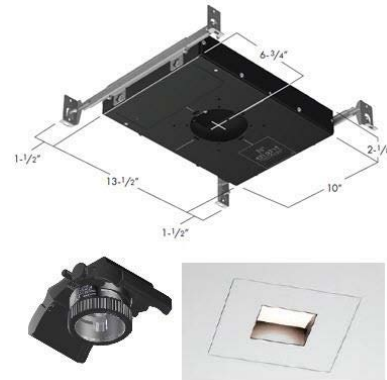
**805-J5-WD-2-40-PR1-8.5-350-FS-P-1-WH-WW-8**

Trim Model:

**FS-P-1-WH-WW-8**

Date:

**2/2/2024**



Light efficiency:

**39 Lumen/Watt**

Light quality:

**CRI: 97.3**

Color temperature:

**2910 K**

CIE 1931:

**x: 0.441  
y: 0.401**

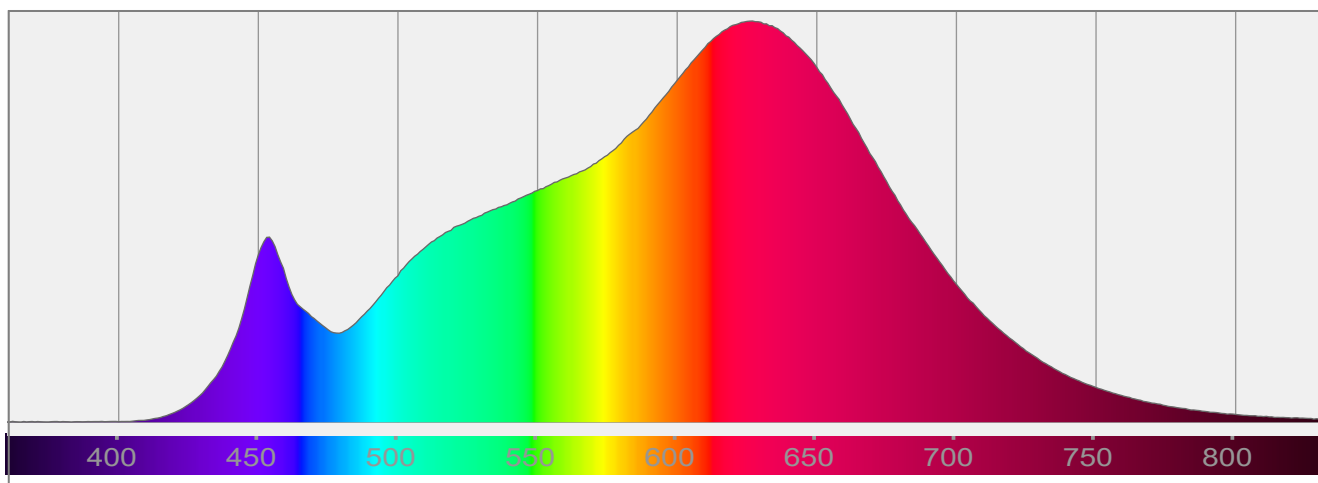
**Output: 579 lm**

**Peak: 373 cd**

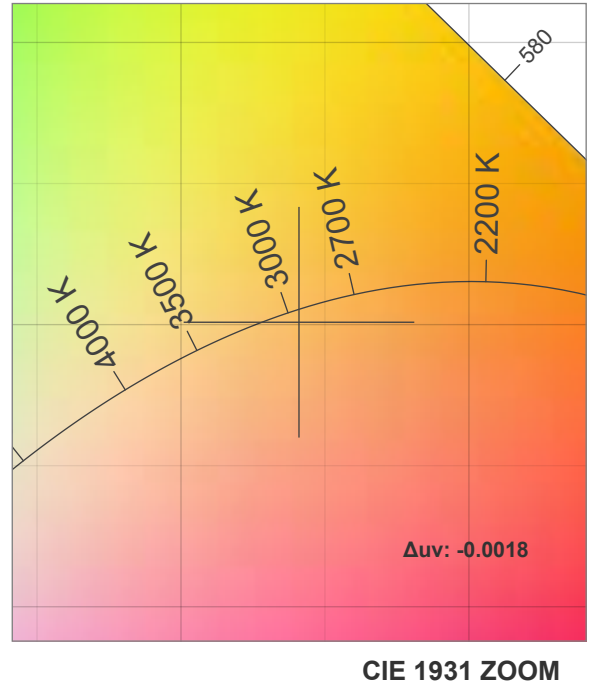
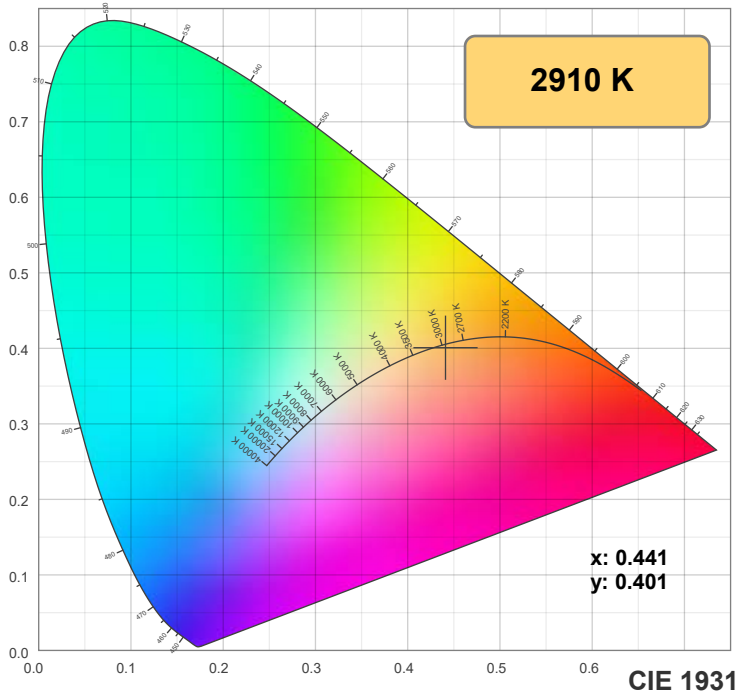
**Power: 14.8 W**

**PF: 0.99**

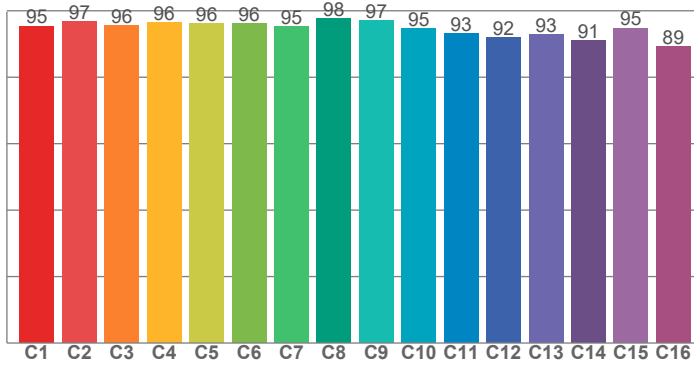
Spectra:



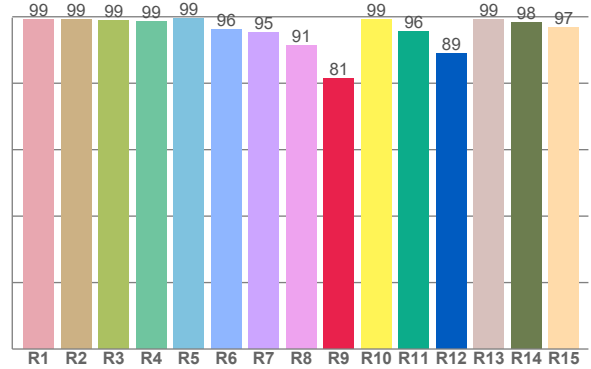
## Color Details



**TM-30: 94.8**



**CRI: 97.3 (R1-R8)**



**CRI R Values:**

R1	R2	R3	R4	R5	R6	R7	R8	R9	R10	R11	R12	R13	R14	R15
99.3	99.2	98.8	98.6	99.5	96.1	95.1	91.5	81.3	99.2	95.7	88.8	99.3	98.4	96.7

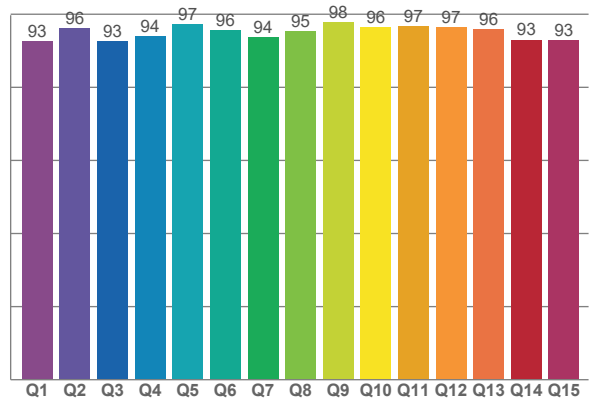
**TM30 C Values:**

C1	C2	C3	C4	C5	C6	C7	C8	C9	C10	C11	C12	C13	C14	C15	C16
95.4	96.8	95.6	96.4	96.2	96.3	95.1	97.6	97.0	94.6	93.2	91.9	93.0	91.0	94.8	89.2

**CQS Q values:**

Q1	Q2	Q3	Q4	Q5	Q6	Q7	Q8	Q9	Q10	Q11	Q12	Q13	Q14	Q15
92.6	96.1	92.7	94.1	97.3	95.6	93.8	95.3	97.9	96.4	96.8	96.5	96.0	93.0	92.8

**CQS: 94.7**



**Color Parameters:**

CCT	CRI	CRI R9	TM30 Rf	TM30 Rg	CQS	x	y	u	v	Δuv
2910 K	97.3	81.3	94.8	101.1	94.7	0.441	0.401	0.255	0.347	-0.0018

# TM-30 Details

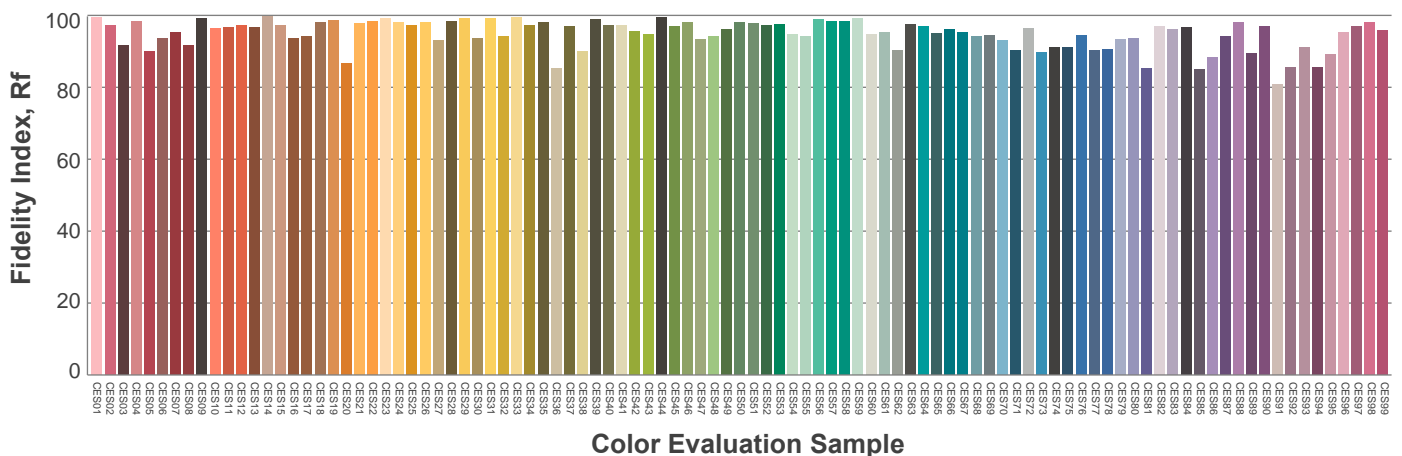
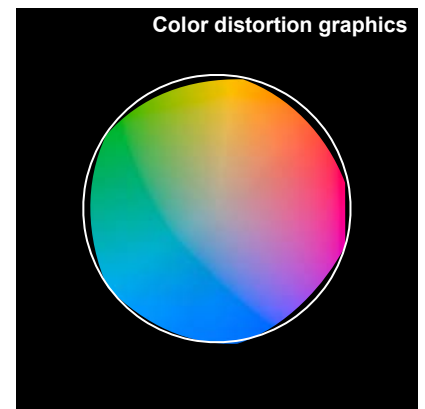
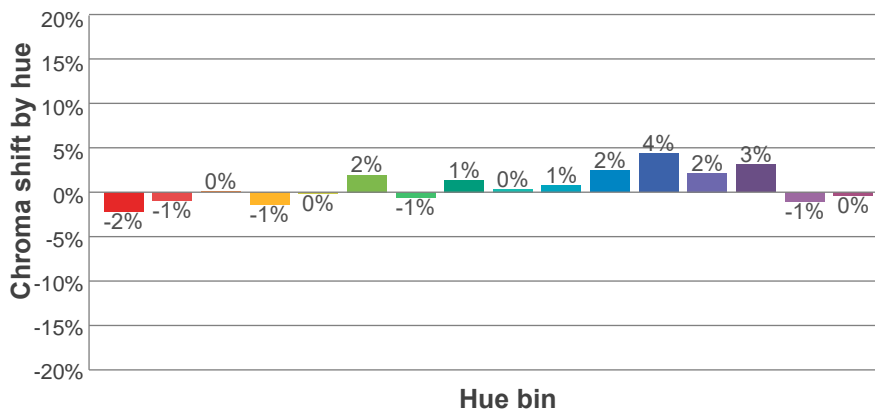
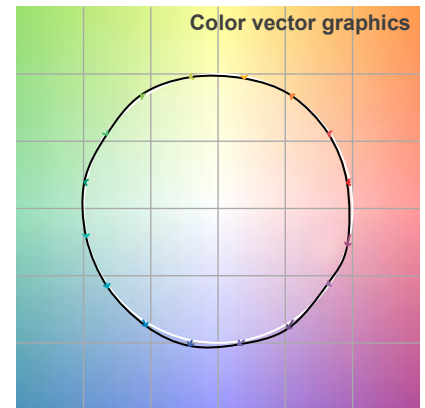
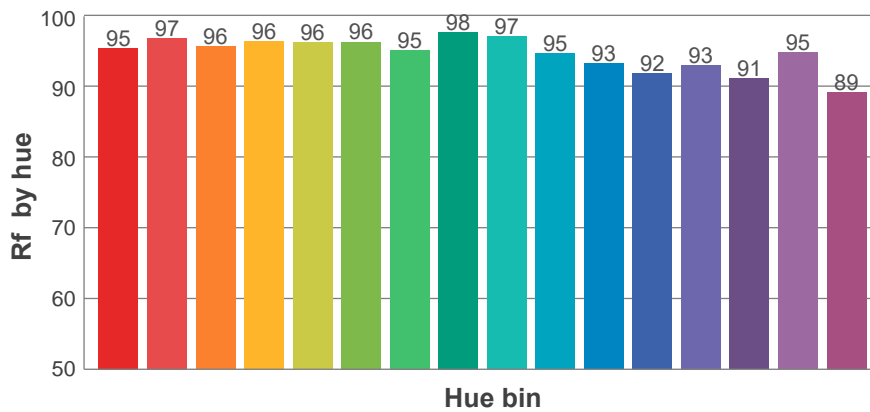
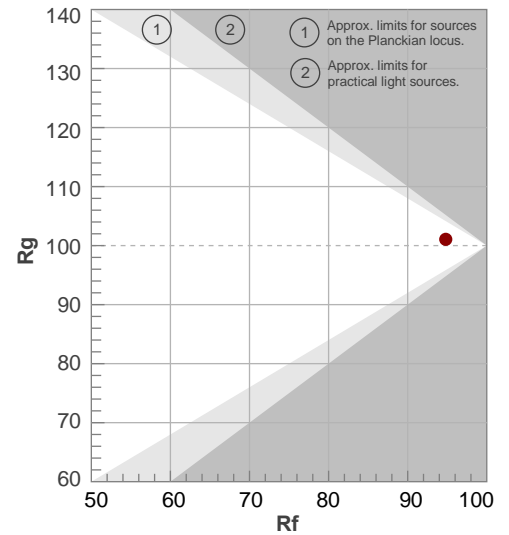
**Rf 94.8**

Fidelity index Rf

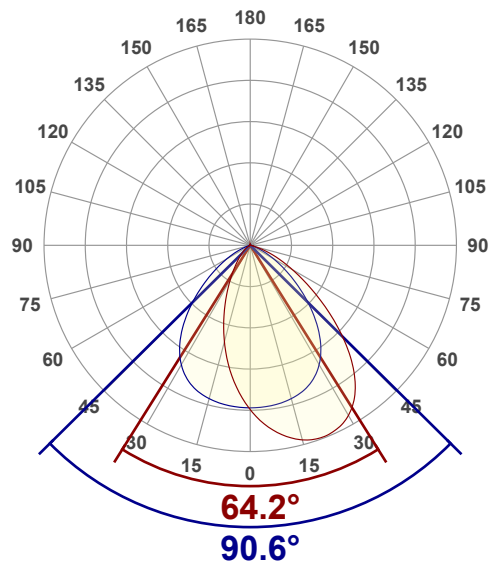
**Rg 101.1**

Gamut index Rg

Hue Bin	R <sub>f</sub>	Shifts (%)	
		Chroma	Hue
1	95	-2%	0%
2	97	-1%	1%
3	96	0%	2%
4	96	-1%	0%
5	96	0%	2%
6	96	2%	1%
7	95	-1%	0%
8	98	1%	0%
9	97	0%	2%
10	95	1%	3%
11	93	2%	4%
12	92	4%	-1%
13	93	2%	-5%
14	91	3%	-7%
15	95	-1%	-2%
16	89	0%	-9%



## Angular Distribution Through 0° and 90° Planes



**Beam Angle: 90.6°W x 64.2°L**

## Beam Details

