

Photometric / Colorimetric / Electric Report

Fixture Model:

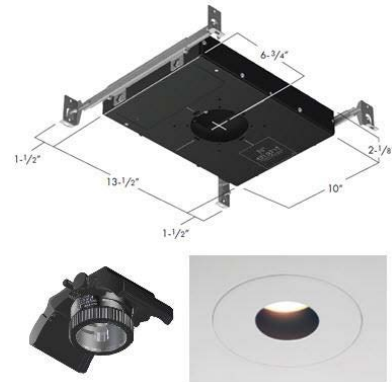
805-J5-WD-2-40-PR1-8.5-350-FR-P-1-WH

Trim Model:

FR-P-1-WH

Date:

2/2/2024



Light efficiency:

51 Lumen/Watt

Light quality:

CRI: 97.2

Color temperature:

2915 K

CIE 1931:

**x: 0.441
y: 0.401**

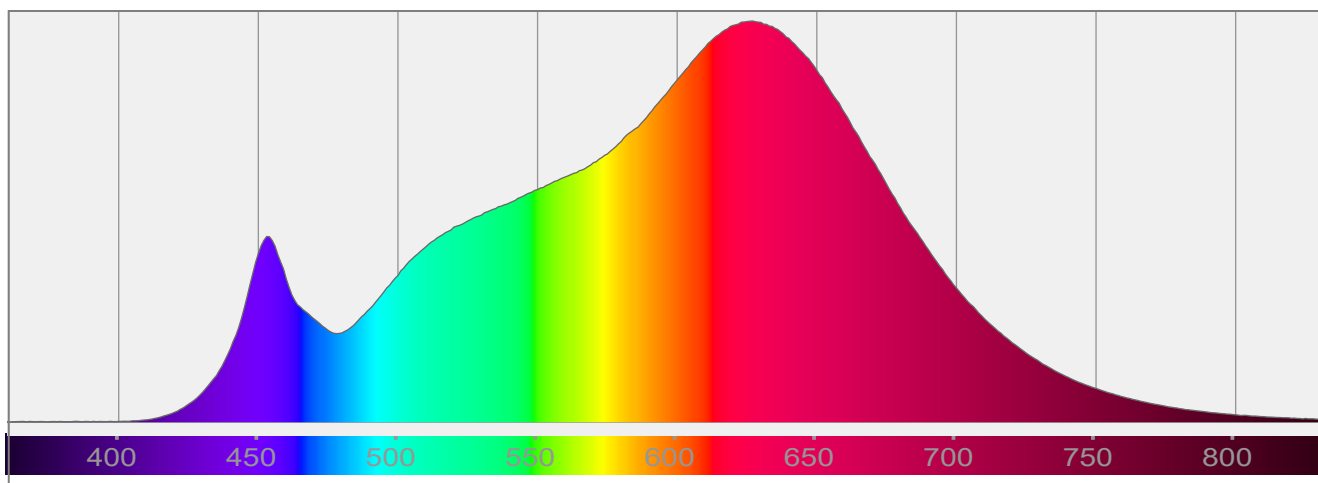
Output: 763 lm

Peak: 1698 cd

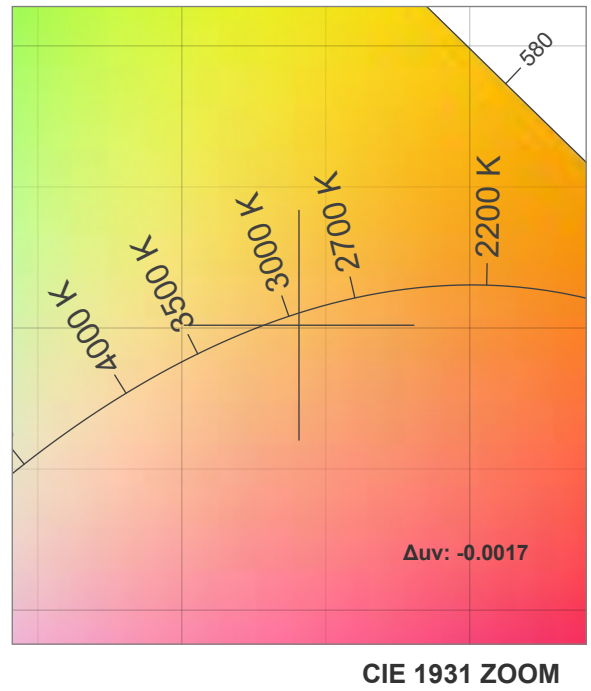
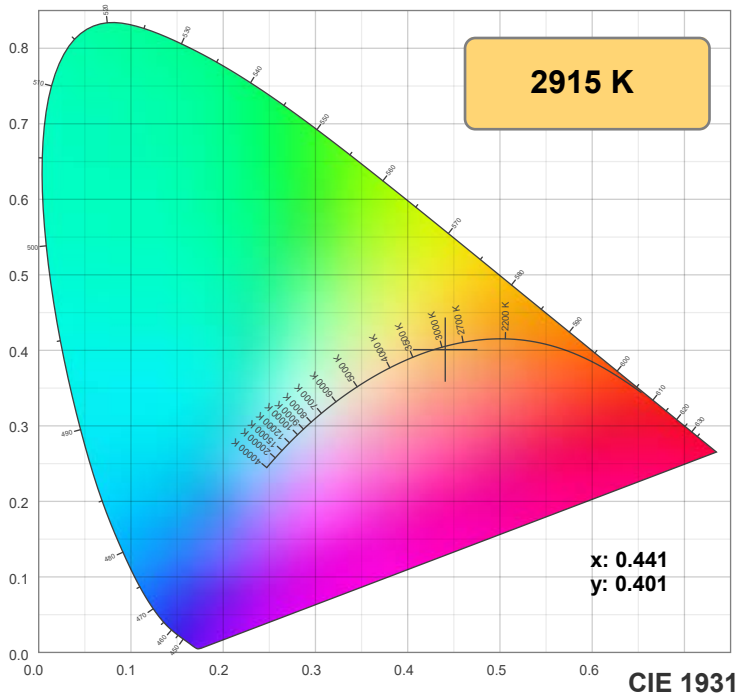
Power: 14.9 W

PF: 0.99

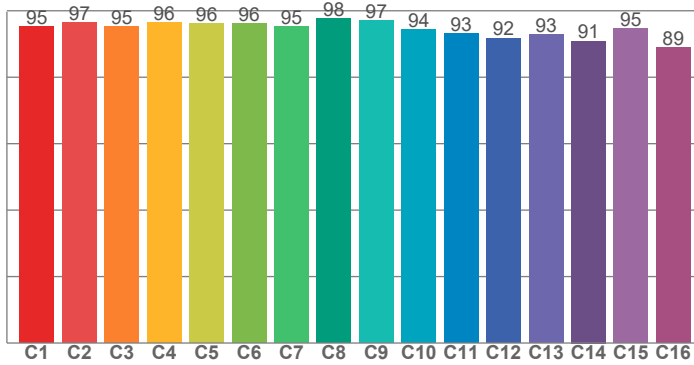
Spectra:



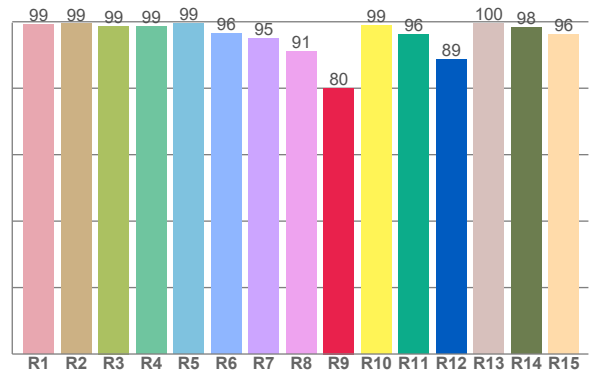
Color Details



TM-30: 94.7



CRI: 97.2 (R1-R8)



CRI R Values:

R1	R2	R3	R4	R5	R6	R7	R8	R9	R10	R11	R12	R13	R14	R15
99.2	99.3	98.7	98.6	99.4	96.4	95.0	90.9	80.1	98.8	96.1	88.7	99.5	98.4	96.3

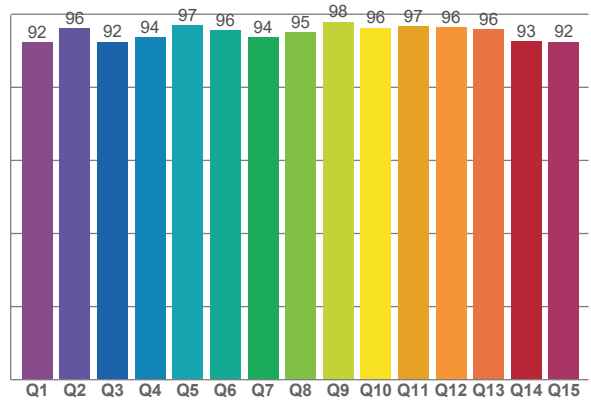
TM30 C Values:

C1	C2	C3	C4	C5	C6	C7	C8	C9	C10	C11	C12	C13	C14	C15	C16
95.2	96.6	95.3	96.3	96.1	96.2	95.2	97.7	97.0	94.5	93.0	91.8	92.9	90.9	94.7	89.0

CQS Q values:

Q1	Q2	Q3	Q4	Q5	Q6	Q7	Q8	Q9	Q10	Q11	Q12	Q13	Q14	Q15
92.4	96.1	92.5	93.8	97.0	95.6	93.6	95.1	97.9	96.3	96.6	96.3	95.8	92.7	92.5

CQS: 94.5



Color Parameters:

CCT	CRI	CRI R9	TM30 Rf	TM30 Rg	CQS	x	y	u	v	Δuv
2915 K	97.2	80.1	94.7	101.0	94.5	0.441	0.401	0.254	0.347	-0.0017

TM-30 Details

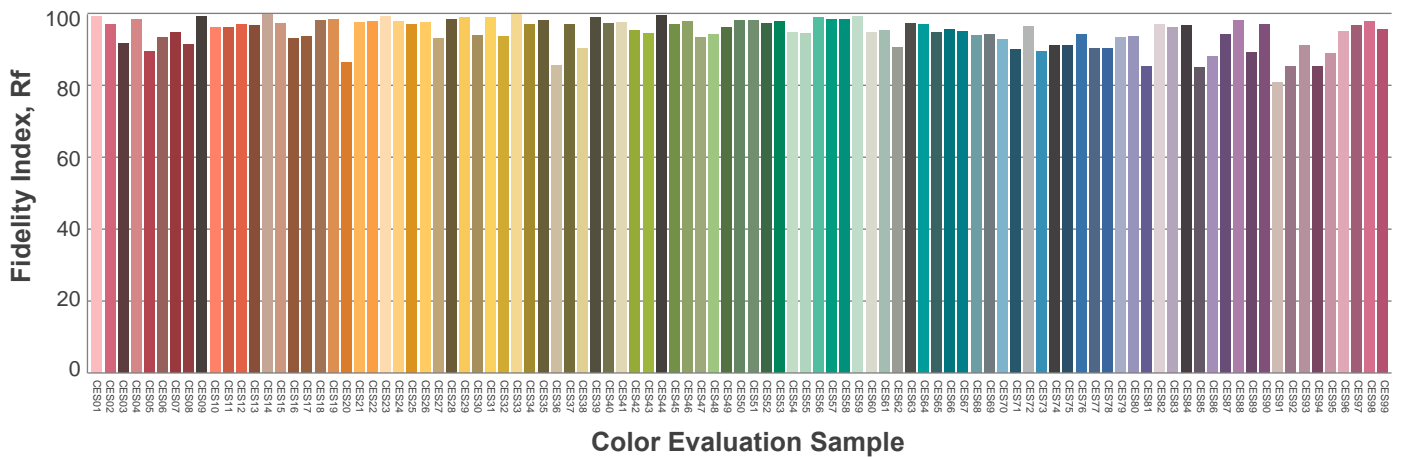
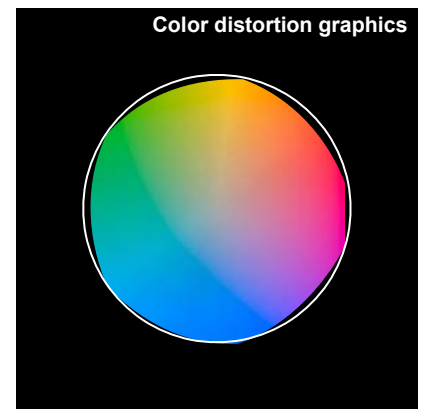
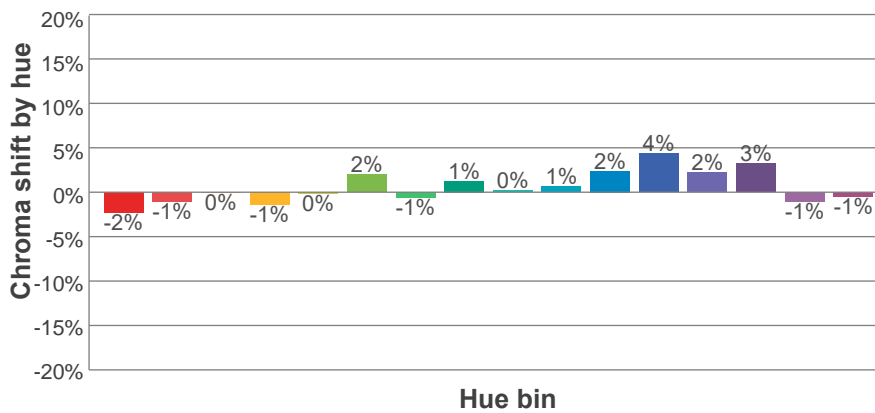
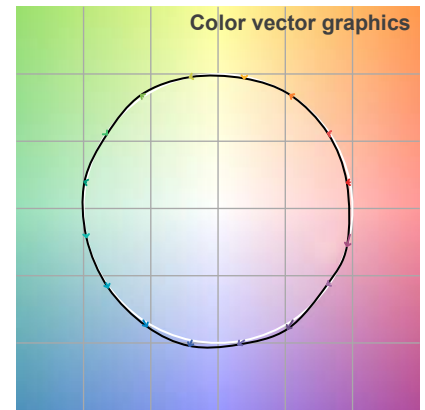
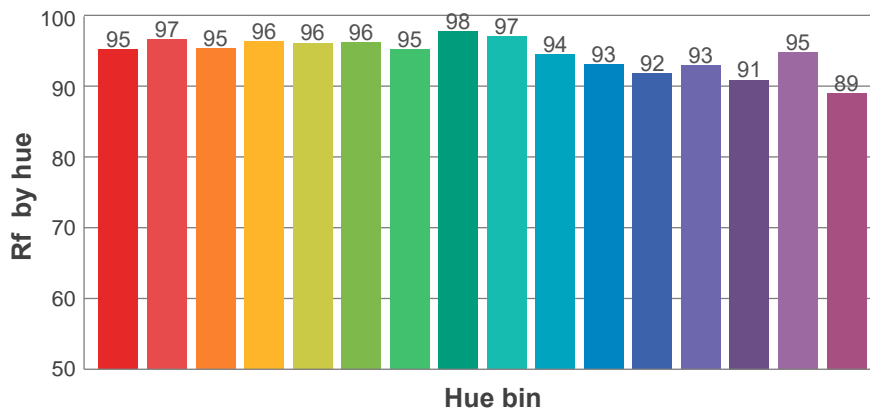
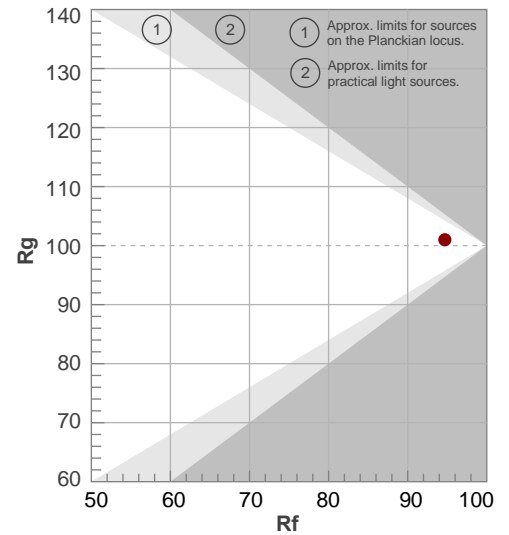
Rf 94.7

Fidelity index Rf

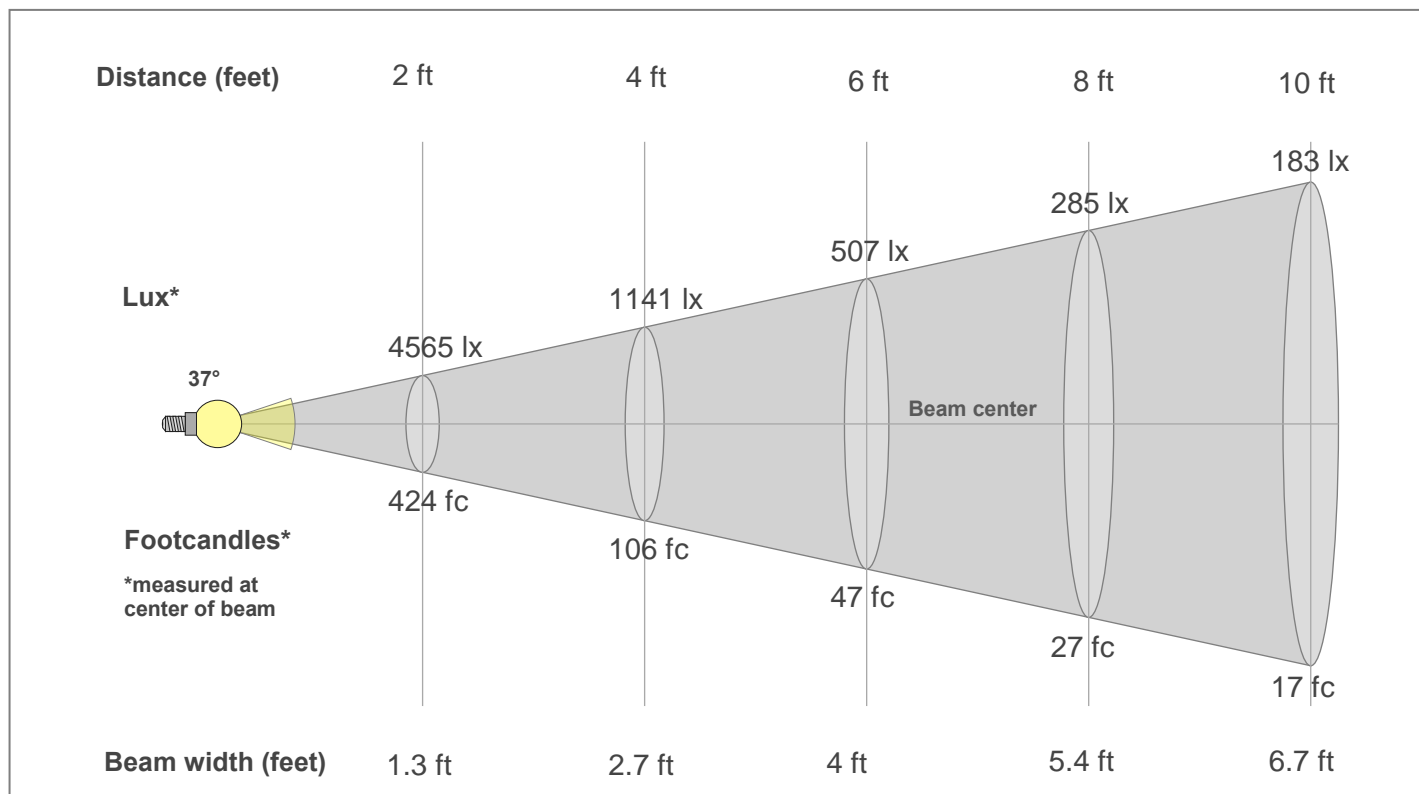
Rg 101.0

Gamut index Rg

Hue Bin	R _f	Shifts (%)	
		Chroma	Hue
1	95	-2%	0%
2	97	-1%	1%
3	95	0%	2%
4	96	-1%	0%
5	96	0%	2%
6	96	2%	1%
7	95	-1%	0%
8	98	1%	0%
9	97	0%	2%
10	94	1%	3%
11	93	2%	5%
12	92	4%	-1%
13	93	2%	-5%
14	91	3%	-7%
15	95	-1%	-2%
16	89	-1%	-9%



Beam Details



Beam Intensities from 1-20m

1m	2m	3m	4m	5m	6m	7m	8m	9m	10m	11m	12m	13m	14m	15m	16m	17m	18m	19m	20m
3.3ft	6.6ft	9.8ft	13.1ft	16.4ft	19.7ft	23ft	26.2ft	29.5ft	32.8ft	36.1ft	39.4ft	42.7ft	45.9ft	49.2ft	52.5ft	55.8ft	59.1ft	62.3ft	65.6ft
1696lx	424lx	188lx	106lx	68lx	47lx	35lx	27lx	21lx	17lx	14lx	12lx	10lx	9lx	8lx	7lx	6lx	5lx	5lx	4lx
157.6fc	39.4fc	17.5fc	9.8fc	6.3fc	4.4fc	3.2fc	2.5fc	1.9fc	1.6fc	1.3fc	1.1fc	0.9fc	0.8fc	0.7fc	0.6fc	0.5fc	0.5fc	0.4fc	0.4fc

Intensities in 0° c-plane

0°	2°	4°	6°	8°	10°	12°	14°	16°	18°	20°	22°	24°	26°	28°	30°	32°	34°	36°	38°
1696	1684	1644	1581	1499	1399	1286	1162	1027	888	751	616	496	390	308	238	182	139	106	81
100%	99%	97%	93%	88%	82%	76%	69%	61%	52%	44%	36%	29%	23%	18%	14%	11%	8%	6%	5%

Intensities in 90° c-plane

0°	2°	4°	6°	8°	10°	12°	14°	16°	18°	20°	22°	24°	26°	28°	30°	32°	34°	36°	38°
1696	1684	1642	1578	1495	1395	1283	1159	1024	882	745	612	493	390	307	239	184	142	109	84
100%	99%	97%	93%	88%	82%	76%	68%	60%	52%	44%	36%	29%	23%	18%	14%	11%	8%	6%	5%

Intensities in 180° c-plane

0°	2°	4°	6°	8°	10°	12°	14°	16°	18°	20°	22°	24°	26°	28°	30°	32°	34°	36°	38°
1696	1684	1644	1581	1499	1399	1286	1162	1027	888	751	616	496	390	308	238	182	139	106	81
100%	99%	97%	93%	88%	82%	76%	69%	61%	52%	44%	36%	29%	23%	18%	14%	11%	8%	6%	5%

Intensities in 270° c-plane

0°	2°	4°	6°	8°	10°	12°	14°	16°	18°	20°	22°	24°	26°	28°	30°	32°	34°	36°	38°
1696	1684	1642	1578	1495	1395	1283	1159	1024	882	745	612	493	390	307	239	184	142	109	84
100%	99%	97%	93%	88%	82%	76%	68%	60%	52%	44%	36%	29%	23%	18%	14%	11%	8%	6%	5%

Beam angle 50%	Field angle 10%	Cut-off angle 2.5%	Intensity ratio in 120°	Intensity ratio in 90°
37°	65.2°	85.9°	99.6%	97.9%