

Photometric / Colorimetric / Electric Report

Fixture Model:

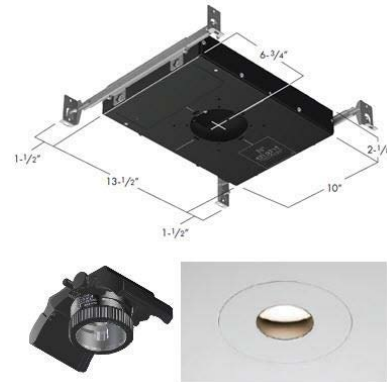
805-J5-WD-2-40-PR1-8.5-350-FR-P-1-WH-WW-8

Trim Model:

FR-P-1-WH-WW-8

Date:

2/2/2024



Light efficiency:

27 Lumen/Watt

Light quality:

CRI: 97.2

Color temperature:

2905 K

CIE 1931:

**x: 0.441
y: 0.401**

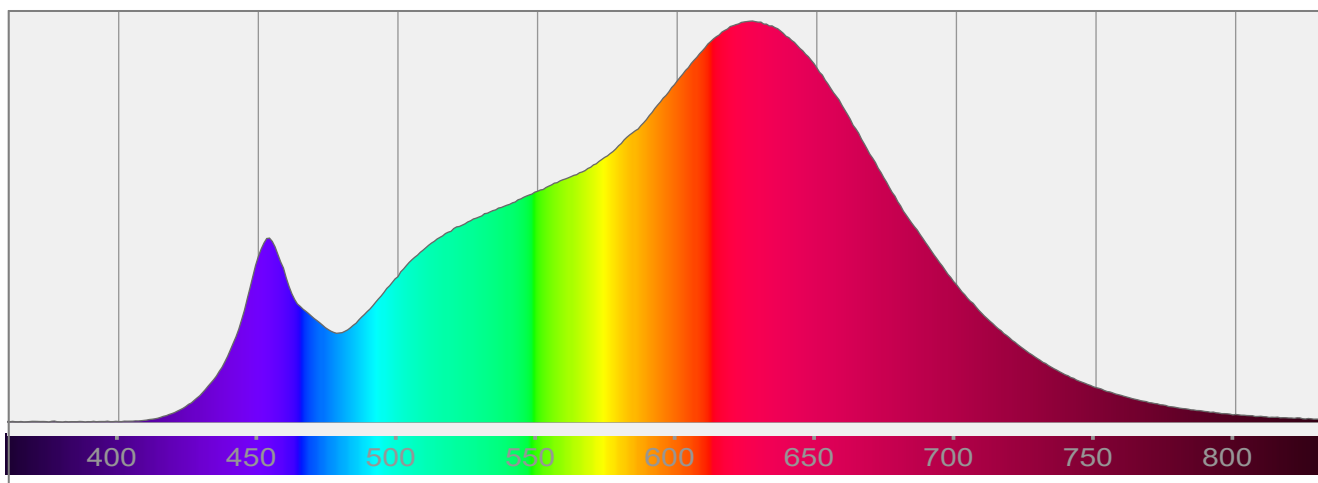
Output: 402 lm

Peak: 569 cd

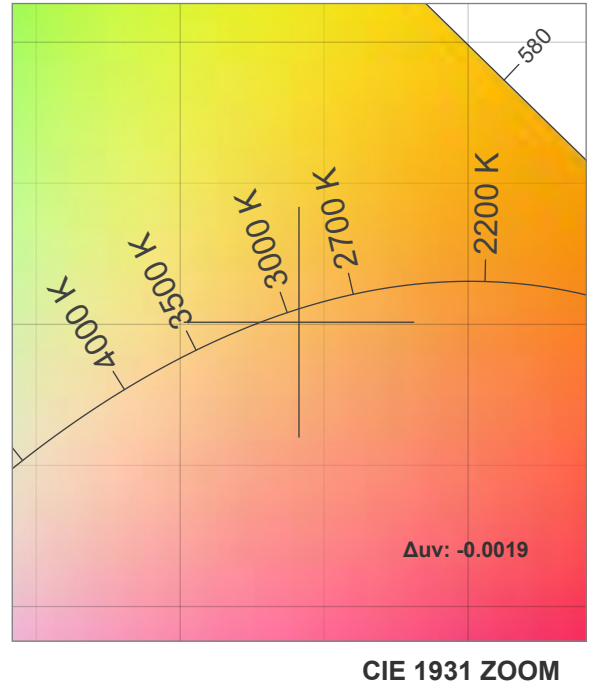
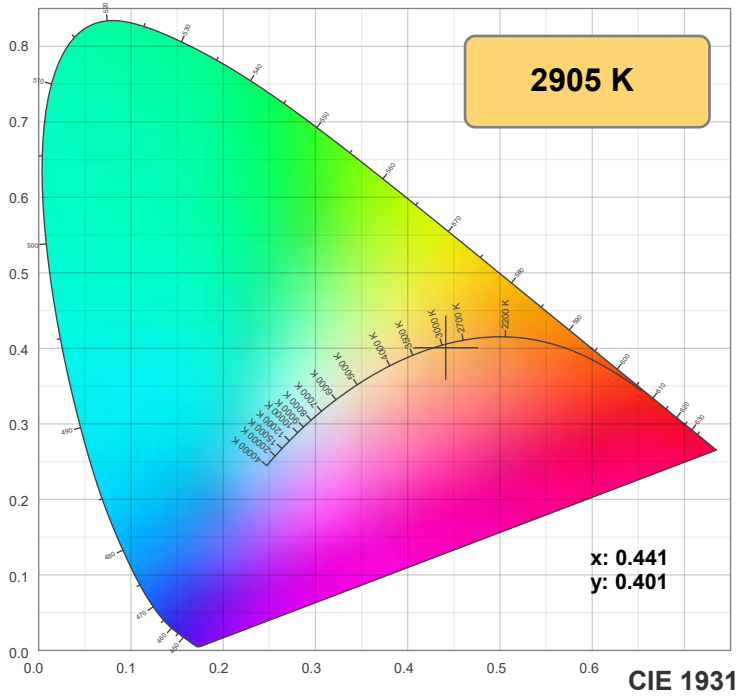
Power: 14.8 W

PF: 0.99

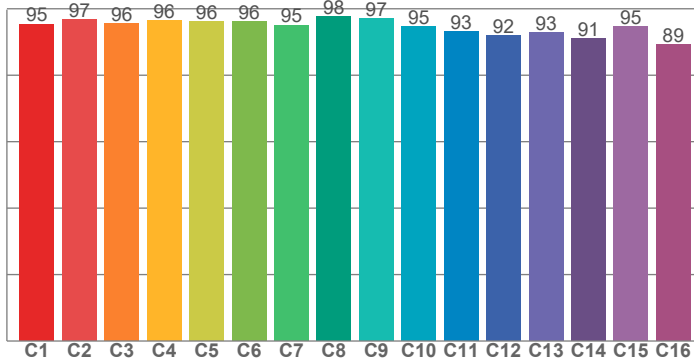
Spectra:



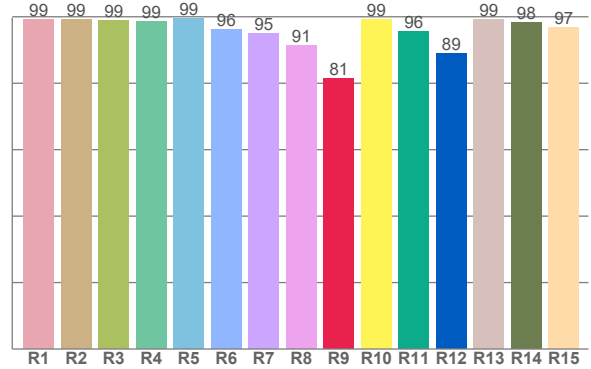
Color Details



TM-30: 94.8



CRI: 97.2 (R1-R8)



CRI R Values:

R1	R2	R3	R4	R5	R6	R7	R8	R9	R10	R11	R12	R13	R14	R15
99.3	99.2	98.8	98.6	99.4	96.1	95.1	91.5	81.4	99.2	95.7	88.8	99.2	98.4	96.8

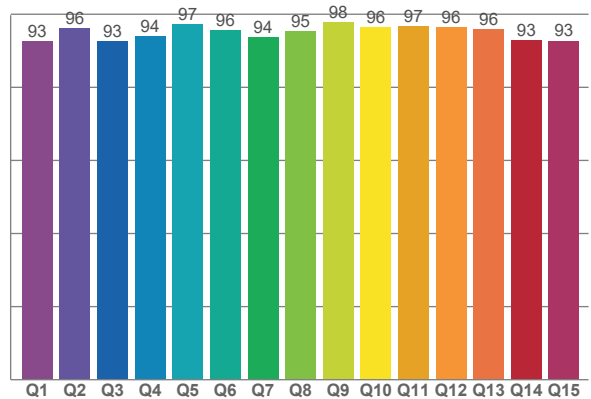
TM30 C Values:

C1	C2	C3	C4	C5	C6	C7	C8	C9	C10	C11	C12	C13	C14	C15	C16
95.4	96.7	95.6	96.4	96.2	96.3	95.1	97.6	96.9	94.6	93.2	91.8	92.9	91.0	94.7	89.2

CQS Q values:

Q1	Q2	Q3	Q4	Q5	Q6	Q7	Q8	Q9	Q10	Q11	Q12	Q13	Q14	Q15
92.5	96.1	92.7	94.0	97.2	95.6	93.7	95.2	97.9	96.4	96.8	96.5	95.9	93.0	92.7

CQS: 94.6



Color Parameters:

CCT	CRI	CRI R9	TM30 Rf	TM30 Rg	CQS	x	y	u	v	Δuv
2905 K	97.2	81.4	94.8	101.1	94.6	0.441	0.401	0.255	0.347	-0.0019

TM-30 Details

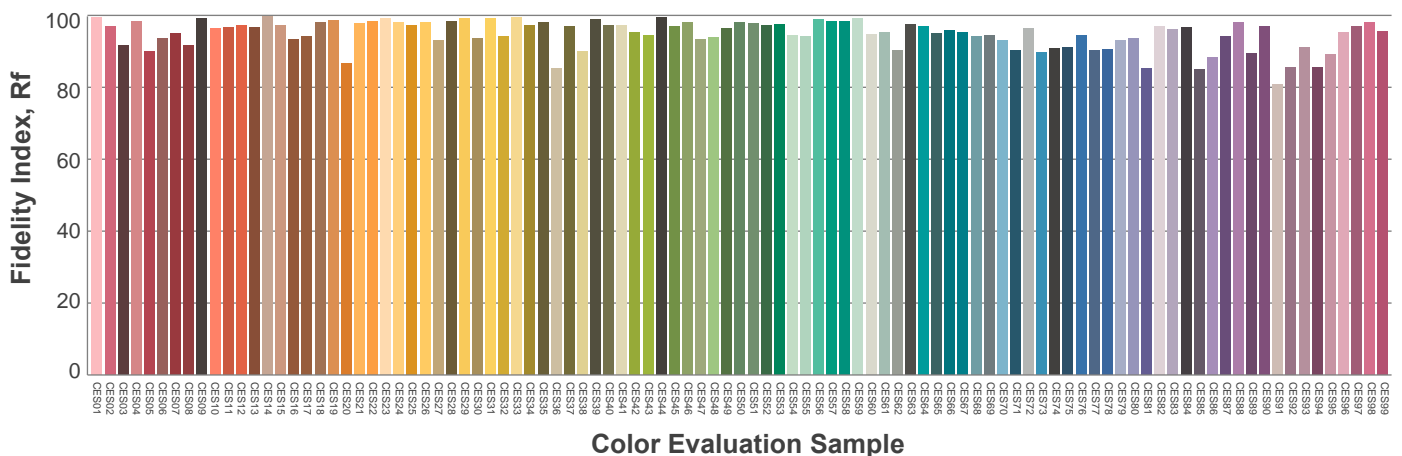
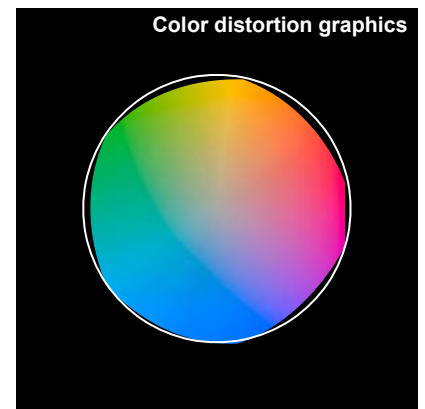
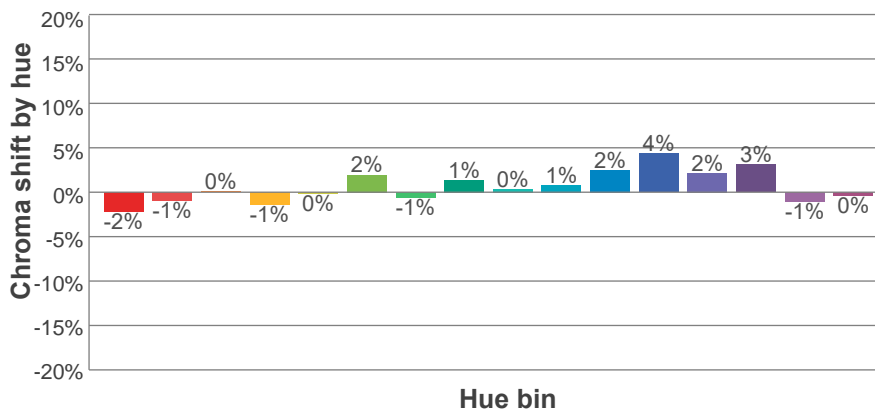
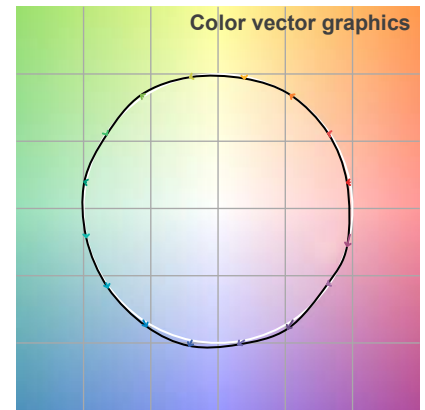
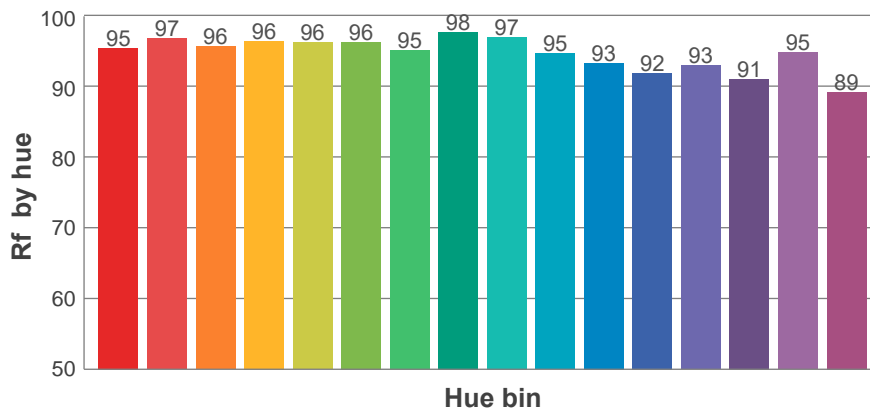
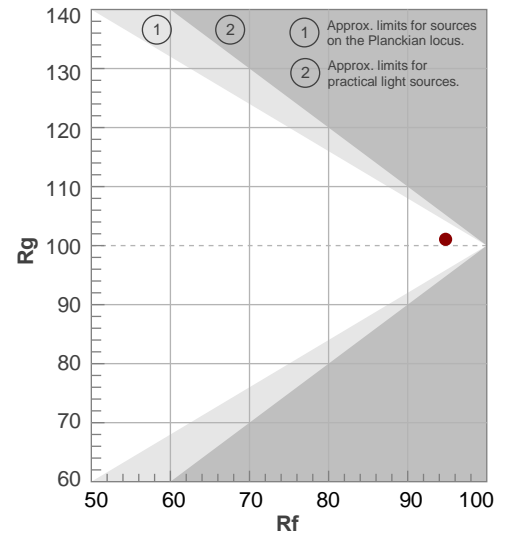
Rf 94.8

Fidelity index Rf

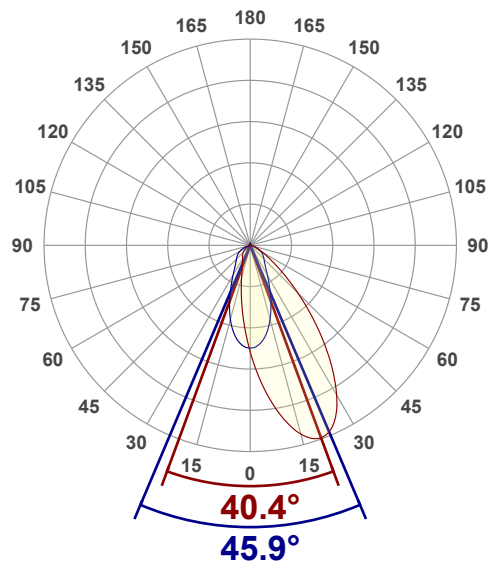
Rg 101.1

Gamut index Rg

Hue Bin	R _f	Shifts (%)	
		Chroma	Hue
1	95	-2%	0%
2	97	-1%	1%
3	96	0%	2%
4	96	-1%	0%
5	96	0%	2%
6	96	2%	1%
7	95	-1%	0%
8	98	1%	0%
9	97	0%	2%
10	95	1%	3%
11	93	2%	4%
12	92	4%	-1%
13	93	2%	-5%
14	91	3%	-7%
15	95	-1%	-2%
16	89	0%	-9%



Angular Distribution Through 0° and 90° Planes



Beam Angle: 45.9°W x 40.4°L

Beam Details

