

Photometric / Colorimetric / Electric Report

Fixture Model:

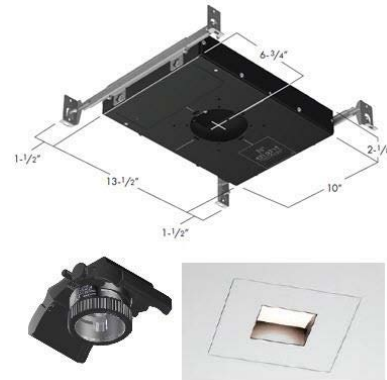
805-J5-TW-40-3000K-DAL2-8.5-700-FS-P-1-WH-WW-8-20d

Trim Model:

FS-P-1-WH-WW-8

Date:

1/21/2025



Light efficiency:

41 Lumen/Watt

Light quality:

CRI: 96.8

Color temperature:

2994 K

CIE 1931:

**x: 0.431
y: 0.390**

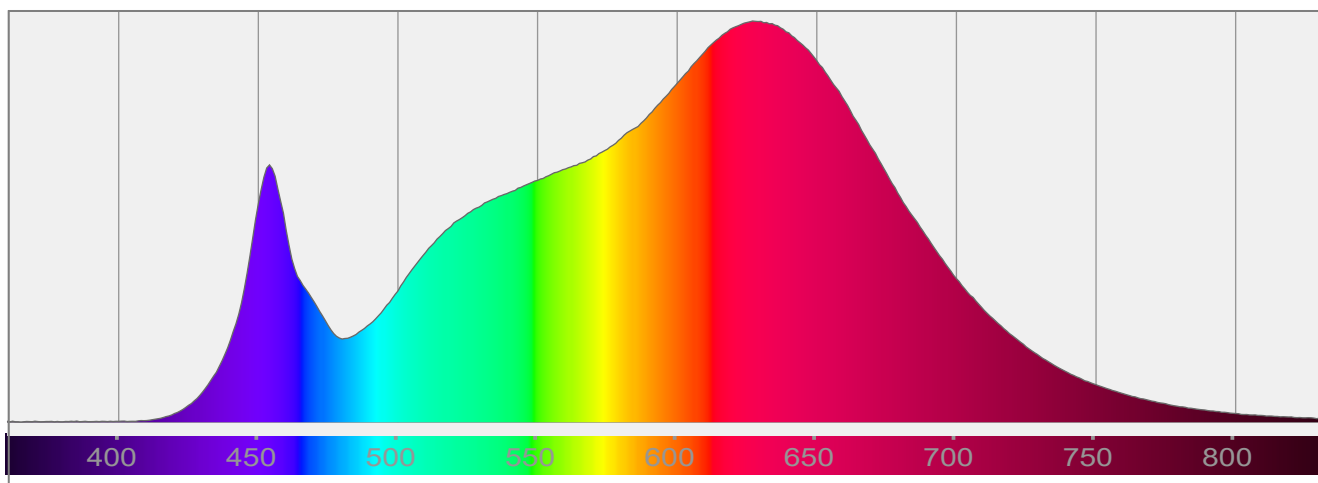
Output: 638 lm

Peak: 425 cd

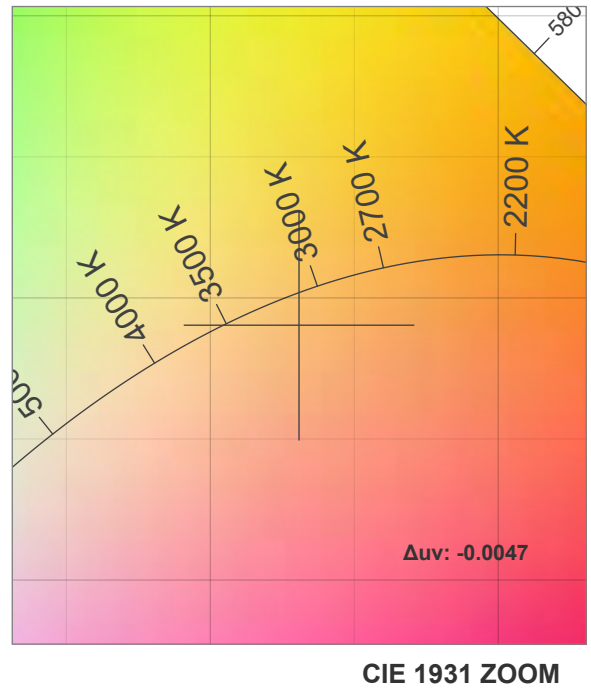
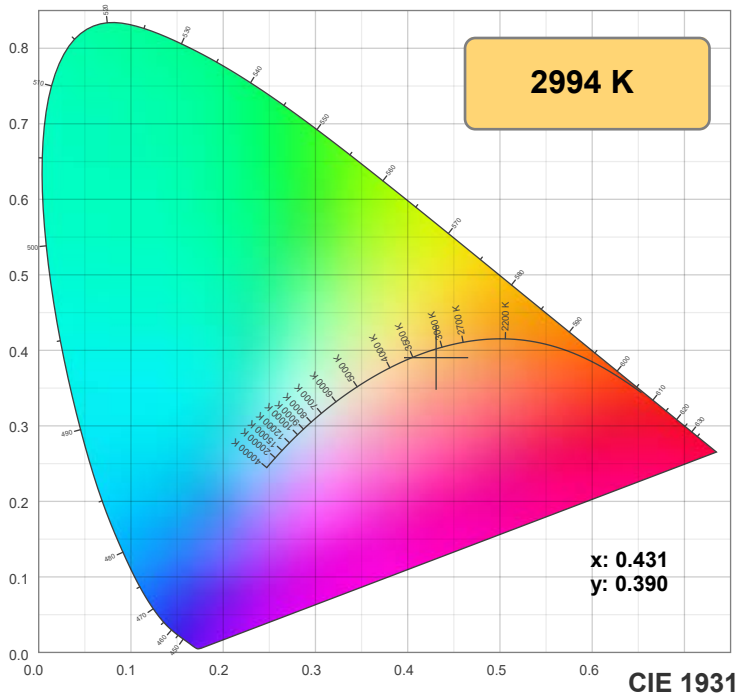
Power: 15.5 W

PF: 0.99

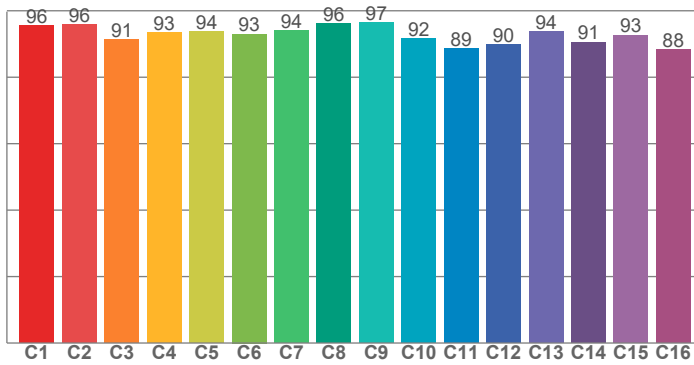
Spectra:



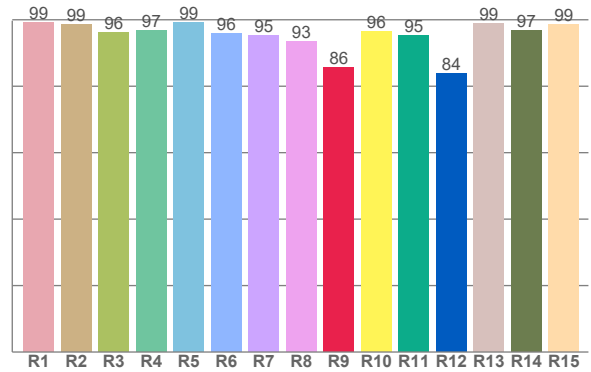
Color Details



TM-30: 92.9



CRI: 96.8 (R1-R8)



CRI R Values:

R1	R2	R3	R4	R5	R6	R7	R8	R9	R10	R11	R12	R13	R14	R15
99.1	98.6	96.3	96.8	99.1	96.0	95.3	93.4	85.7	96.5	95.2	83.9	99.0	96.9	98.6

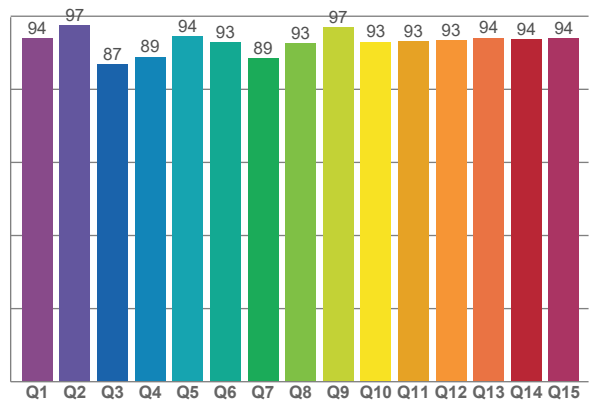
TM30 C Values:

C1	C2	C3	C4	C5	C6	C7	C8	C9	C10	C11	C12	C13	C14	C15	C16
95.6	95.7	91.4	93.3	93.7	93.0	94.1	96.2	96.6	91.7	88.6	89.8	93.6	90.6	92.7	88.2

CQS Q values:

Q1	Q2	Q3	Q4	Q5	Q6	Q7	Q8	Q9	Q10	Q11	Q12	Q13	Q14	Q15
94.0	97.5	87.0	88.9	94.4	93.0	88.6	92.5	96.9	93.0	93.1	93.4	94.1	93.6	93.9

CQS: 92.3



Color Parameters:

CCT	CRI	CRI R9	TM30 Rf	TM30 Rg	CQS	x	y	u	v	Δuv
2994 K	96.8	85.7	92.9	103.2	92.3	0.431	0.390	0.253	0.343	-0.0047

TM-30 Details

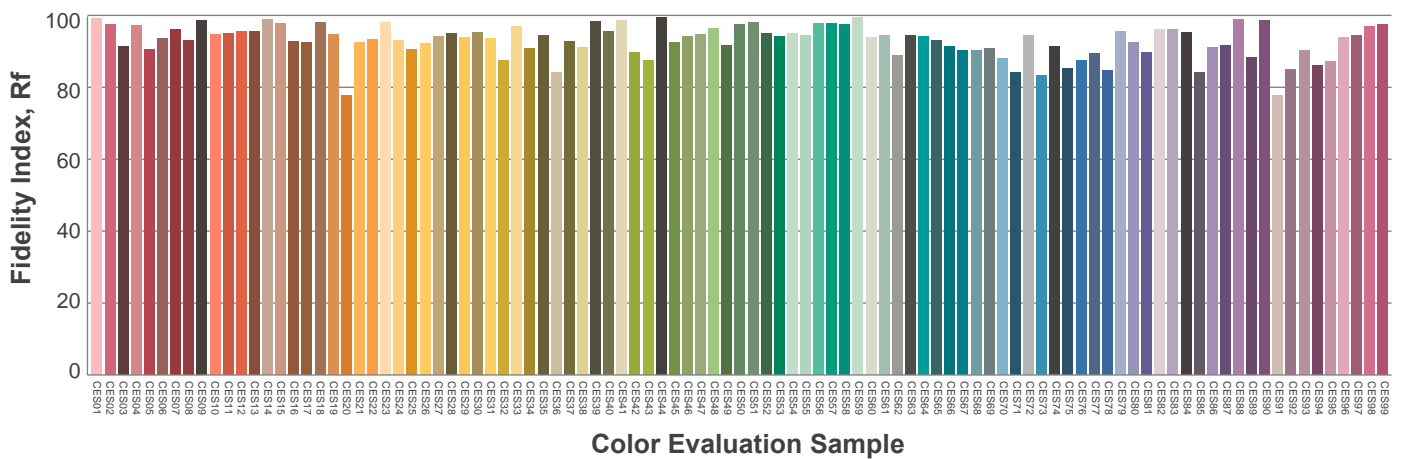
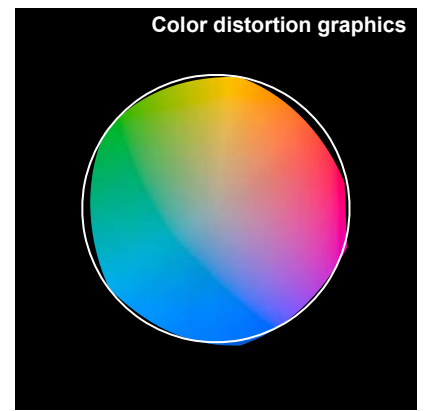
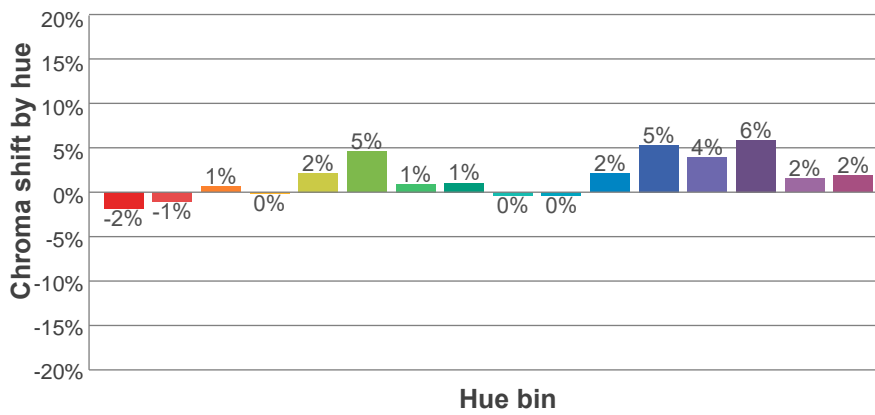
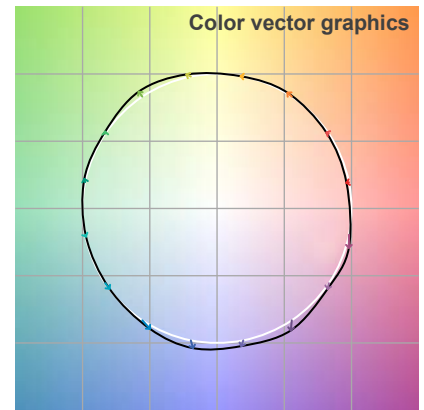
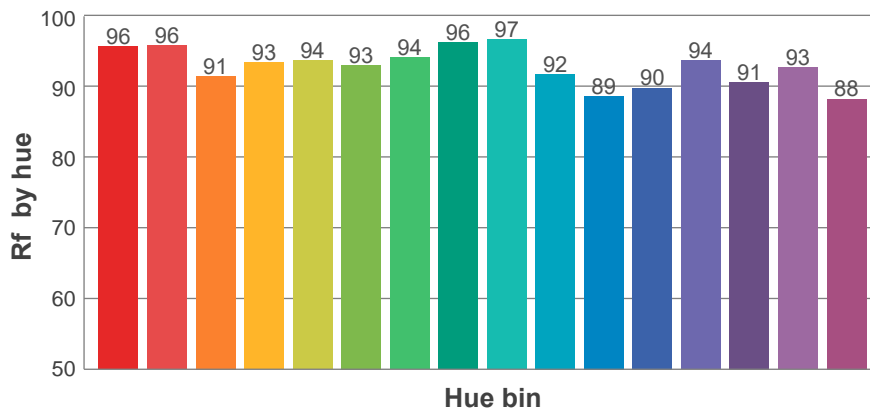
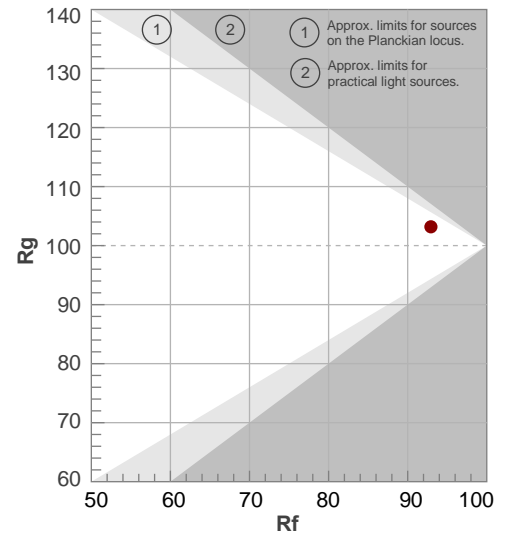
Rf 92.9

Fidelity index Rf

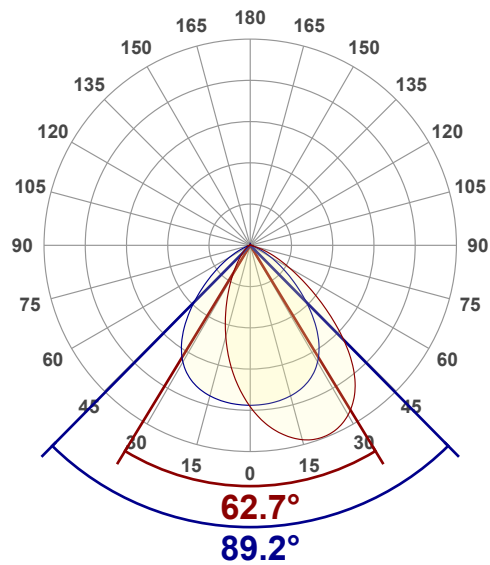
Rg 103.2

Gamut index Rg

Hue Bin	R _f	Shifts (%)	
		Chroma	Hue
1	96	-2%	0%
2	96	-1%	2%
3	91	1%	4%
4	93	0%	2%
5	94	2%	3%
6	93	5%	0%
7	94	1%	-1%
8	96	1%	-2%
9	97	0%	1%
10	92	0%	5%
11	89	2%	8%
12	90	5%	3%
13	94	4%	-2%
14	91	6%	-5%
15	93	2%	-4%
16	88	2%	-10%



Angular Distribution Through 0° and 90° Planes



Beam Angle: 89.2°W x 62.7°L

Beam Details

