

Photometric / Colorimetric / Electric Report

Fixture Model:

805-J5-TW-15T-3000K-DAL2-8.5-700-FS-LG-P-1-WH-NL

Trim Model:

FS-LG-P-1-WH/NL

Date:

1/20/2025



Light efficiency:

64 Lumen/Watt

Light quality:

CRI: 96.4

Color temperature:

2965 K

CIE 1931:

**x: 0.434
y: 0.393**

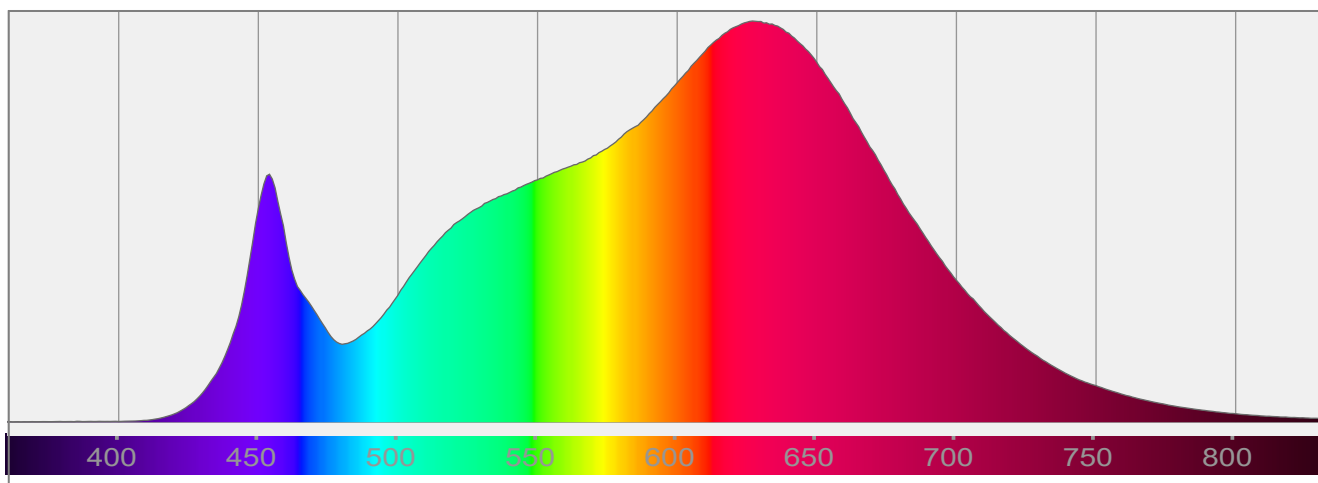
Output: 998 lm

Peak: 6547 cd

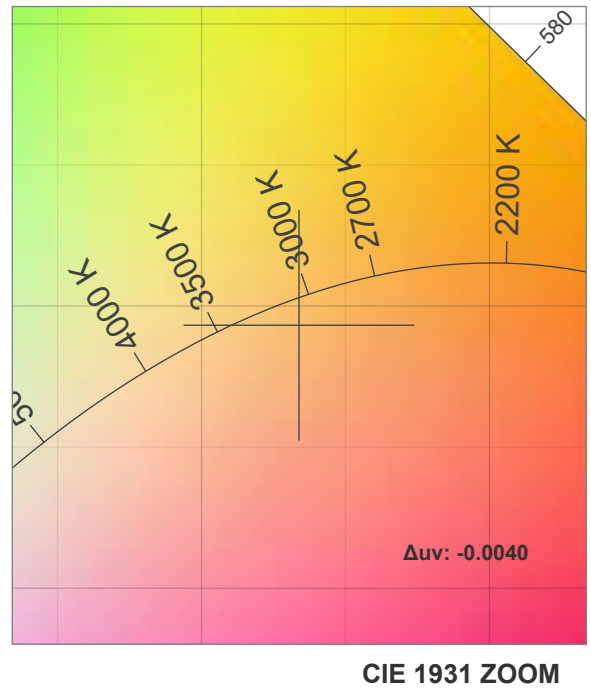
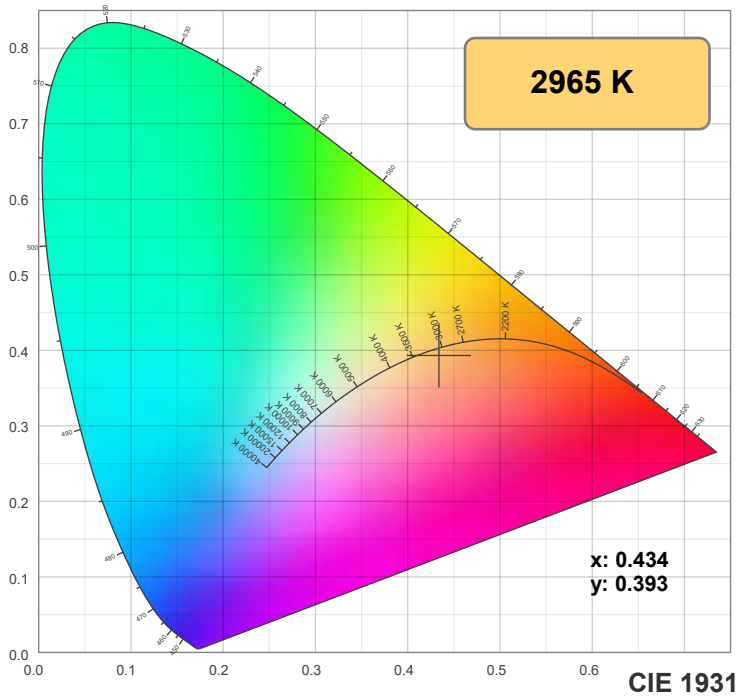
Power: 15.5 W

PF: 1.0

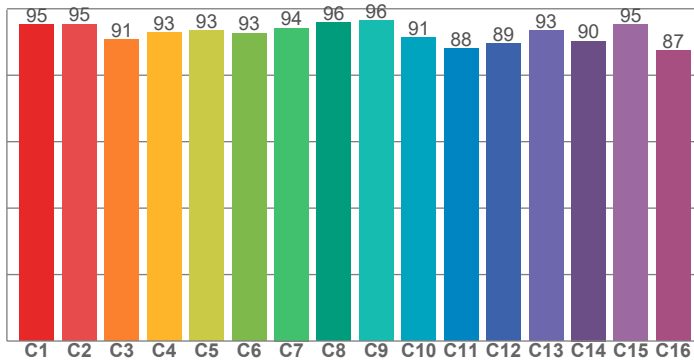
Spectra:



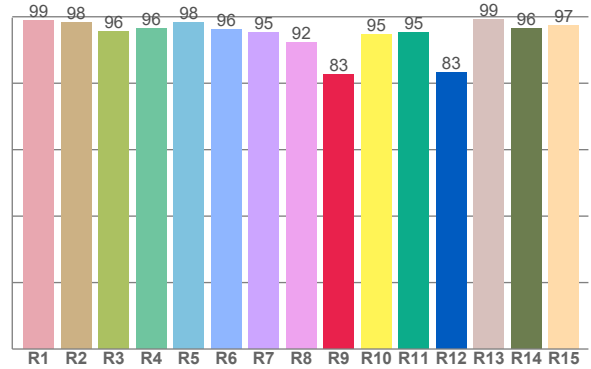
Color Details



TM-30: 92.6



CRI: 96.4 (R1-R8)



CRI R Values:

R1	R2	R3	R4	R5	R6	R7	R8	R9	R10	R11	R12	R13	R14	R15
98.8	98.4	95.6	96.5	98.2	96.2	95.2	92.3	82.7	94.6	95.4	83.1	99.1	96.5	97.3

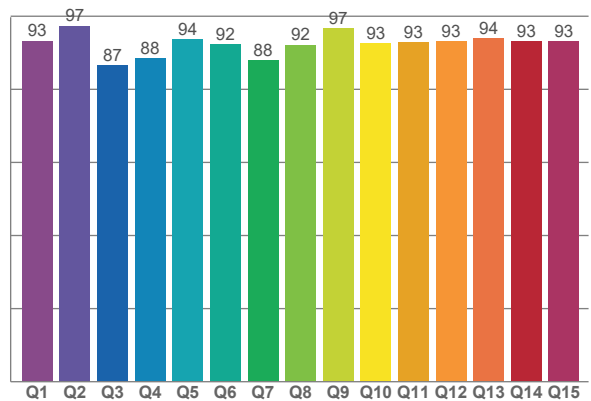
TM30 C Values:

C1	C2	C3	C4	C5	C6	C7	C8	C9	C10	C11	C12	C13	C14	C15	C16
95.2	95.4	90.7	92.9	93.4	92.7	94.2	95.9	96.4	91.4	88.1	89.4	93.5	90.3	95.1	87.5

CQS Q values:

Q1	Q2	Q3	Q4	Q5	Q6	Q7	Q8	Q9	Q10	Q11	Q12	Q13	Q14	Q15
93.3	97.4	86.5	88.5	93.8	92.2	88.1	92.2	96.7	92.6	92.8	93.2	94.1	93.1	93.1

CQS: 91.9



Color Parameters:

CCT	CRI	CRI R9	TM30 Rf	TM30 Rg	CQS	x	y	u	v	Δuv
2965 K	96.4	82.7	92.6	102.9	91.9	0.434	0.393	0.253	0.344	-0.0040

TM-30 Details

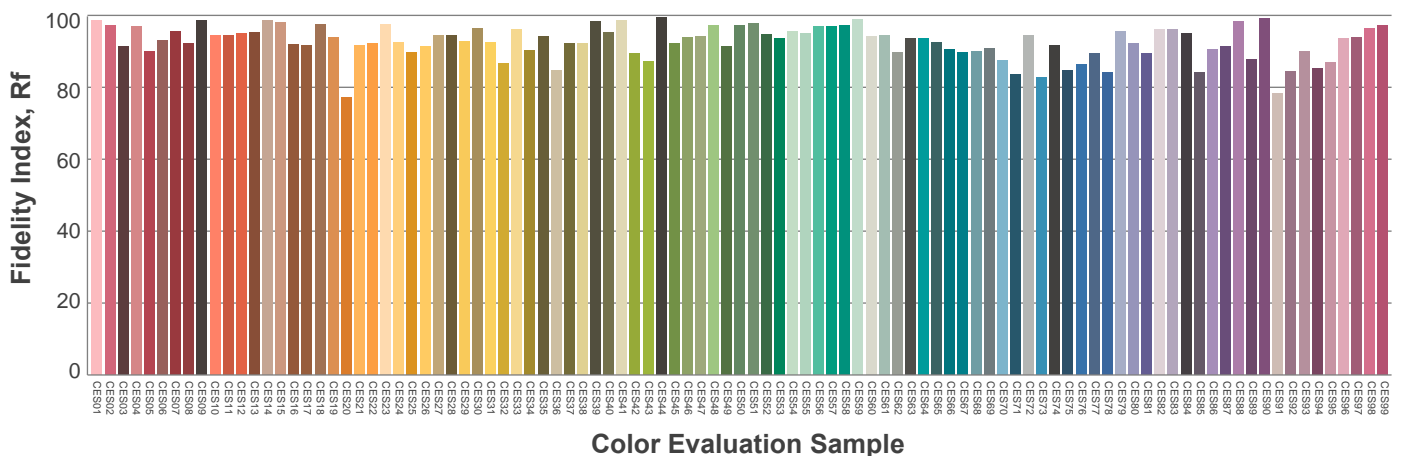
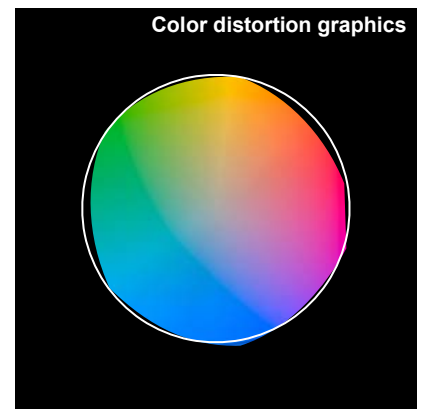
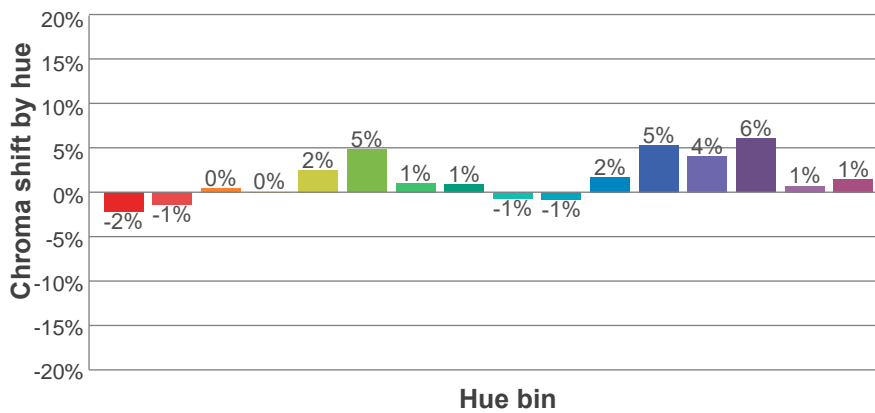
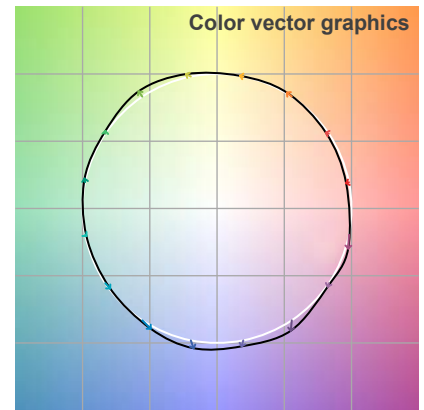
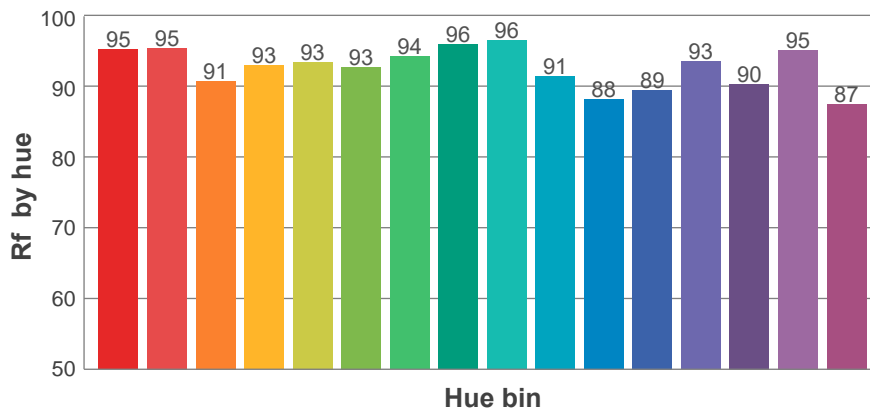
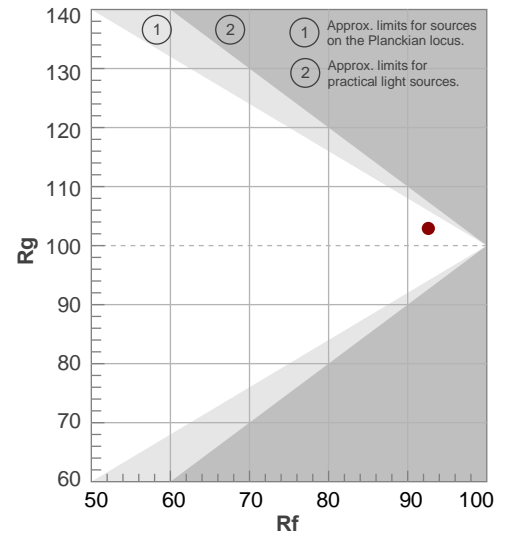
Rf 92.6

Fidelity index Rf

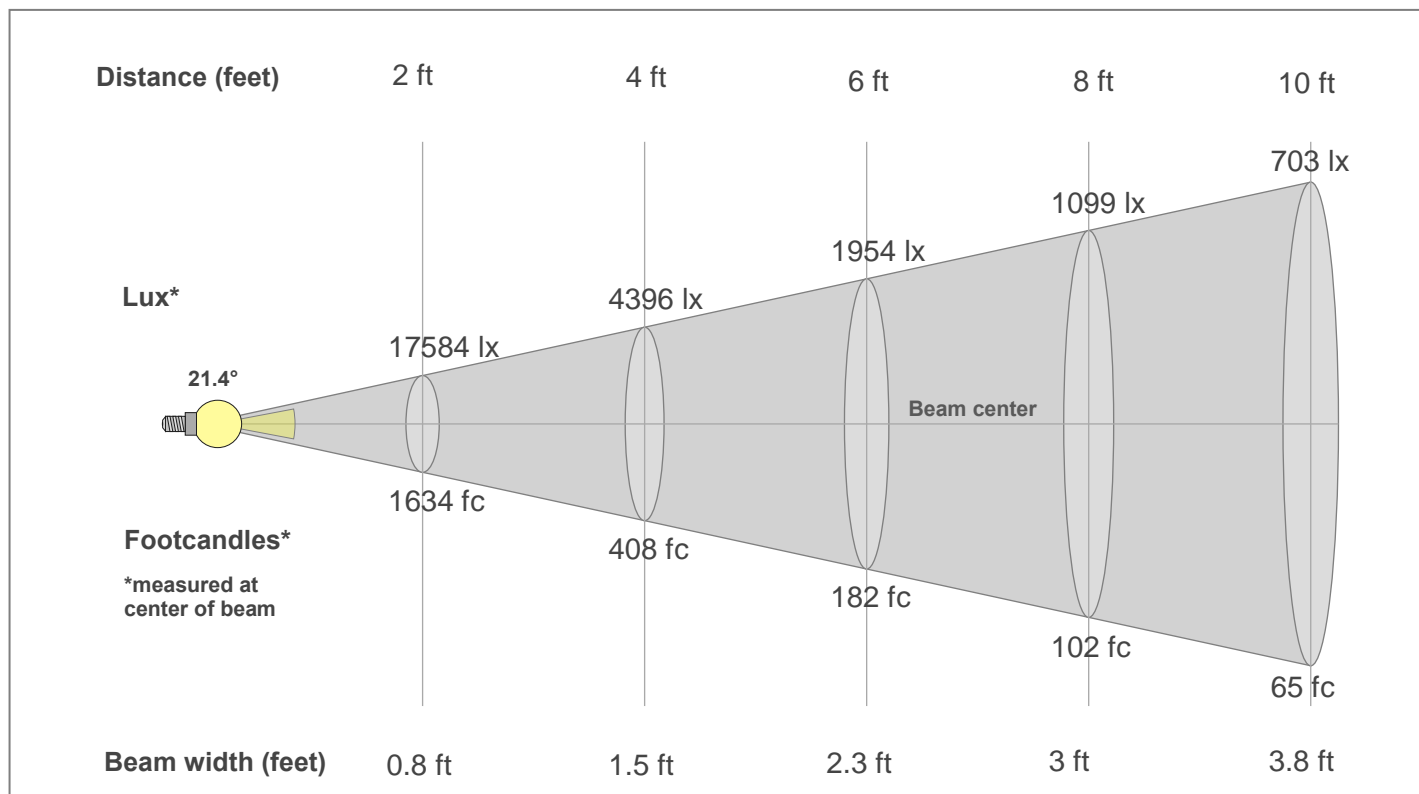
Rg 102.9

Gamut index Rg

Hue Bin	R _f	Shifts (%)	
		Chroma	Hue
1	95	-2%	0%
2	95	-1%	2%
3	91	0%	5%
4	93	0%	2%
5	93	2%	3%
6	93	5%	0%
7	94	1%	-2%
8	96	1%	-3%
9	96	-1%	1%
10	91	-1%	5%
11	88	2%	9%
12	89	5%	3%
13	93	4%	-2%
14	90	6%	-5%
15	95	1%	-3%
16	87	1%	-10%



Beam Details



Beam Intensities from 1-20m

1m	2m	3m	4m	5m	6m	7m	8m	9m	10m	11m	12m	13m	14m	15m	16m	17m	18m	19m	20m
3.3ft	6.6ft	9.8ft	13.1ft	16.4ft	19.7ft	23ft	26.2ft	29.5ft	32.8ft	36.1ft	39.4ft	42.7ft	45.9ft	49.2ft	52.5ft	55.8ft	59.1ft	62.3ft	65.6ft
6534lx	1634lx	726lx	408lx	261lx	182lx	133lx	102lx	81lx	65lx	54lx	45lx	39lx	33lx	29lx	26lx	23lx	20lx	18lx	16lx
607.1fc	151.8fc	67.5fc	37.9fc	24.3fc	16.9fc	12.4fc	9.5fc	7.5fc	6.1fc	5fc	4.2fc	3.6fc	3.1fc	2.7fc	2.4fc	2.1fc	1.9fc	1.7fc	1.5fc

Intensities in 0° c-plane

0°	1°	2°	3°	4°	5°	6°	7°	8°	9°	10°	11°	12°	13°	14°	15°	16°	17°	18°	19°
6534	6495	6369	6185	5958	5682	5352	4968	4540	4082	3610	3139	2685	2250	1845	1481	1170	914	704	536
100%	99%	97%	95%	91%	87%	82%	76%	69%	62%	55%	48%	41%	34%	28%	23%	18%	14%	11%	8%

Intensities in 90° c-plane

0°	1°	2°	3°	4°	5°	6°	7°	8°	9°	10°	11°	12°	13°	14°	15°	16°	17°	18°	19°
6534	6474	6356	6181	5952	5671	5342	4965	4537	4070	3588	3110	2641	2188	1770	1401	1086	827	623	467
100%	99%	97%	95%	91%	87%	82%	76%	69%	62%	55%	48%	40%	33%	27%	21%	17%	13%	10%	7%

Intensities in 180° c-plane

0°	1°	2°	3°	4°	5°	6°	7°	8°	9°	10°	11°	12°	13°	14°	15°	16°	17°	18°	19°
6534	6495	6369	6185	5958	5682	5352	4968	4540	4082	3610	3139	2685	2250	1845	1481	1170	914	704	536
100%	99%	97%	95%	91%	87%	82%	76%	69%	62%	55%	48%	41%	34%	28%	23%	18%	14%	11%	8%

Intensities in 270° c-plane

0°	1°	2°	3°	4°	5°	6°	7°	8°	9°	10°	11°	12°	13°	14°	15°	16°	17°	18°	19°
6534	6474	6356	6181	5952	5671	5342	4965	4537	4070	3588	3110	2641	2188	1770	1401	1086	827	623	467
100%	99%	97%	95%	91%	87%	82%	76%	69%	62%	55%	48%	40%	33%	27%	21%	17%	13%	10%	7%

Beam angle 50%	Field angle 10%	Cut-off angle 2.5%	Intensity ratio in 120°	Intensity ratio in 90°
21.4°	36.1°	46.8°	99.6%	98.9%