

Photometric / Colorimetric / Electric Report

Fixture Model:

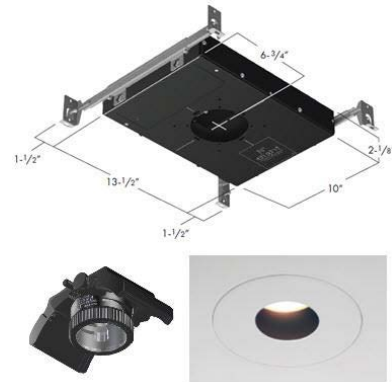
805-J5-TW-15T-3000K-DAL2-8.5-700-FR-P-1-WH

Trim Model:

FR-P-1-WH

Date:

1/20/2025



Light efficiency:

59 Lumen/Watt

Light quality:

CRI: 96.4

Color temperature:

2960 K

CIE 1931:

**x: 0.434
y: 0.394**

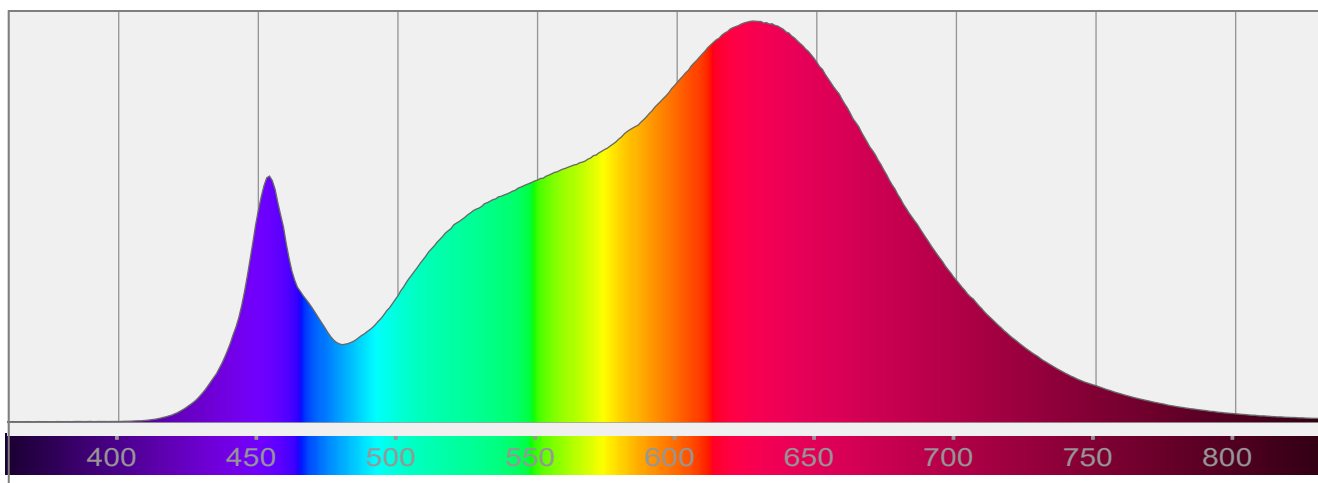
Output: 919 lm

Peak: 6588 cd

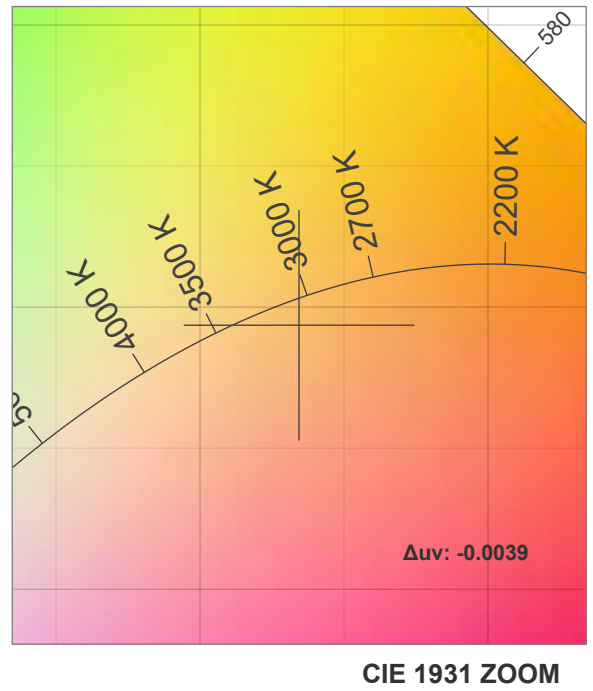
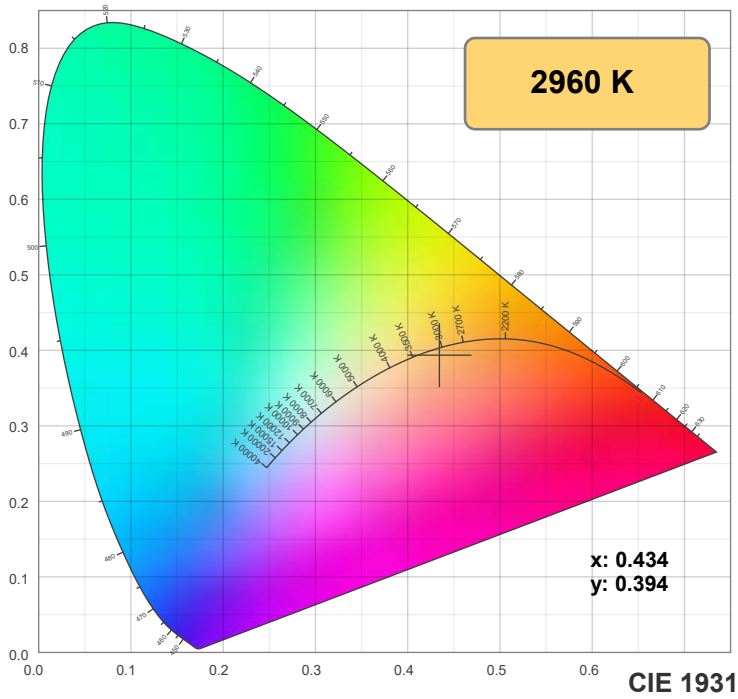
Power: 15.5 W

PF: 0.99

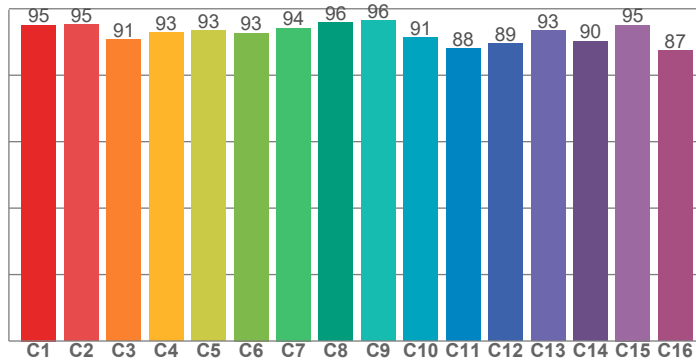
Spectra:



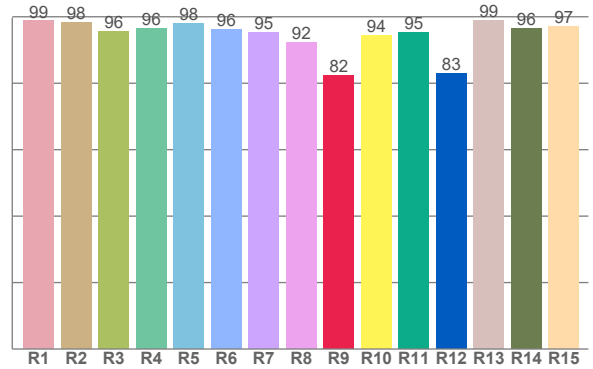
Color Details



TM-30: 92.6



CRI: 96.4 (R1-R8)



CRI R Values:

R1	R2	R3	R4	R5	R6	R7	R8	R9	R10	R11	R12	R13	R14	R15
98.8	98.3	95.6	96.5	98.1	96.2	95.2	92.2	82.4	94.5	95.4	83.0	99.0	96.4	97.2

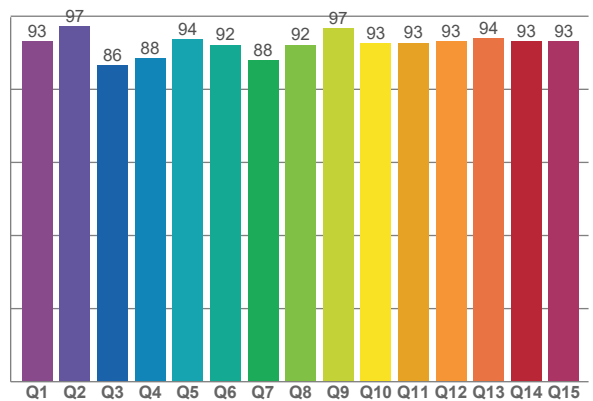
TM30 C Values:

C1	C2	C3	C4	C5	C6	C7	C8	C9	C10	C11	C12	C13	C14	C15	C16
95.1	95.4	90.7	92.9	93.4	92.7	94.2	95.9	96.4	91.4	88.1	89.4	93.4	90.3	95.1	87.5

CQS Q values:

Q1	Q2	Q3	Q4	Q5	Q6	Q7	Q8	Q9	Q10	Q11	Q12	Q13	Q14	Q15
93.2	97.4	86.5	88.4	93.7	92.2	88.1	92.2	96.7	92.6	92.8	93.2	94.1	93.0	93.1

CQS: 91.8



Color Parameters:

CCT	CRI	CRI R9	TM30 Rf	TM30 Rg	CQS	x	y	u	v	Δuv
2960 K	96.4	82.4	92.6	102.9	91.8	0.434	0.394	0.253	0.345	-0.0039

TM-30 Details

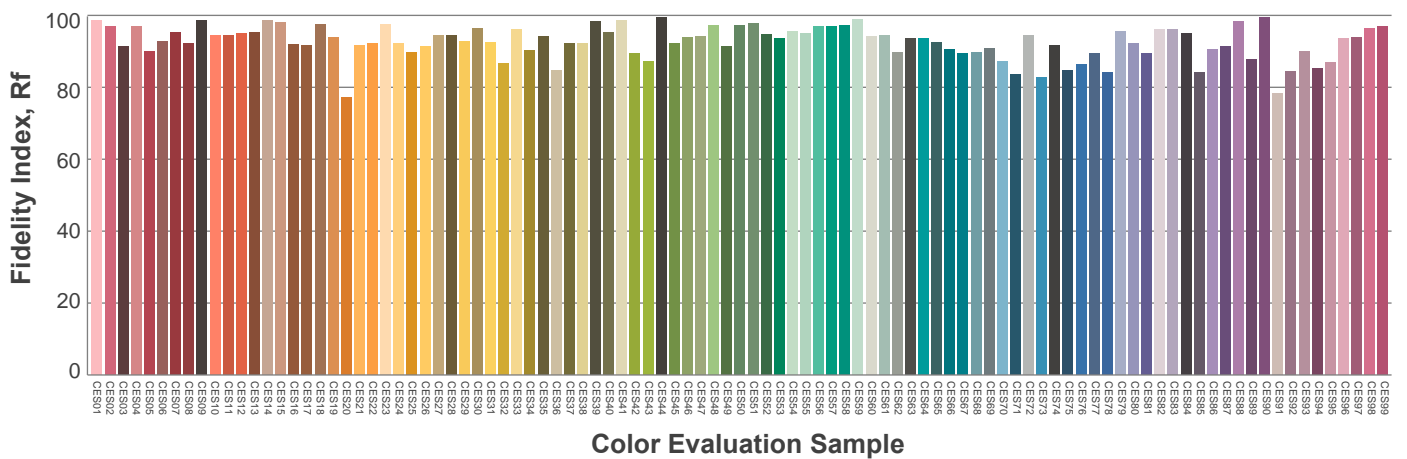
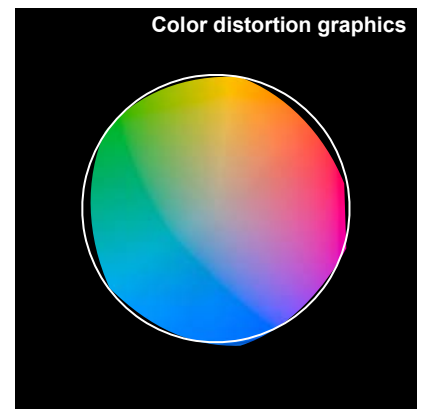
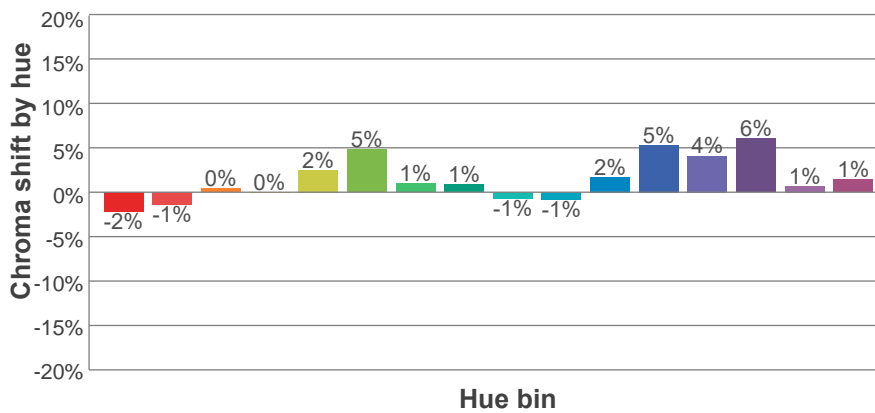
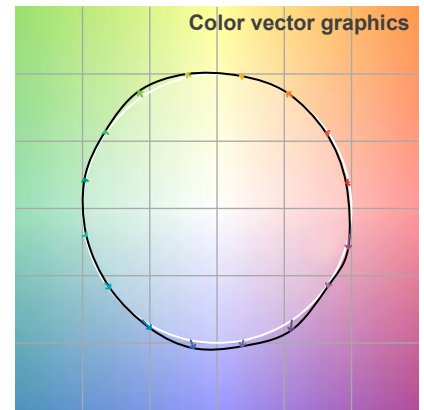
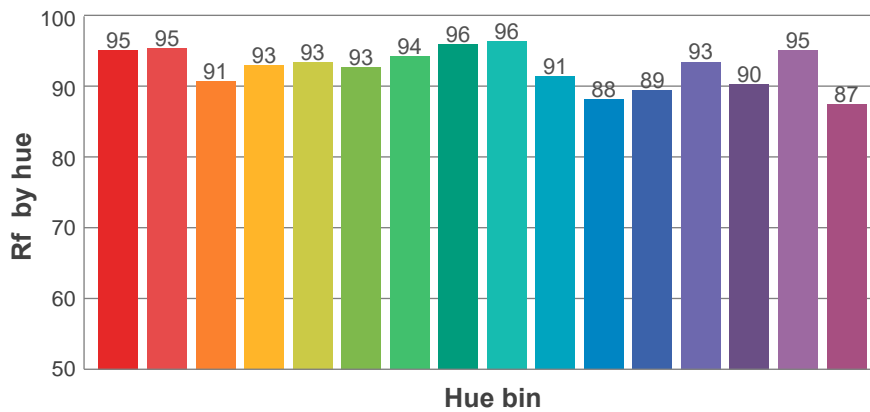
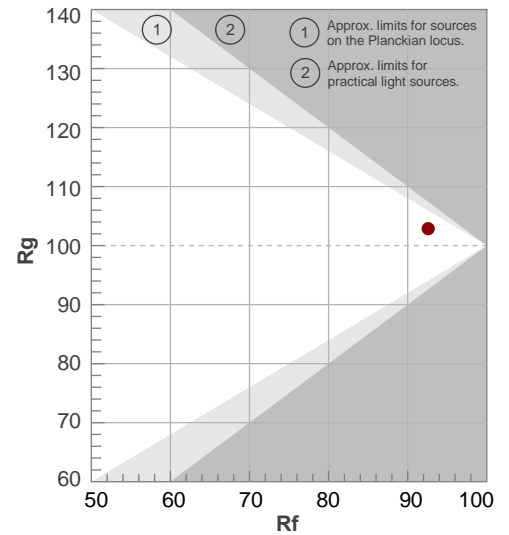
Rf 92.6

Fidelity index Rf

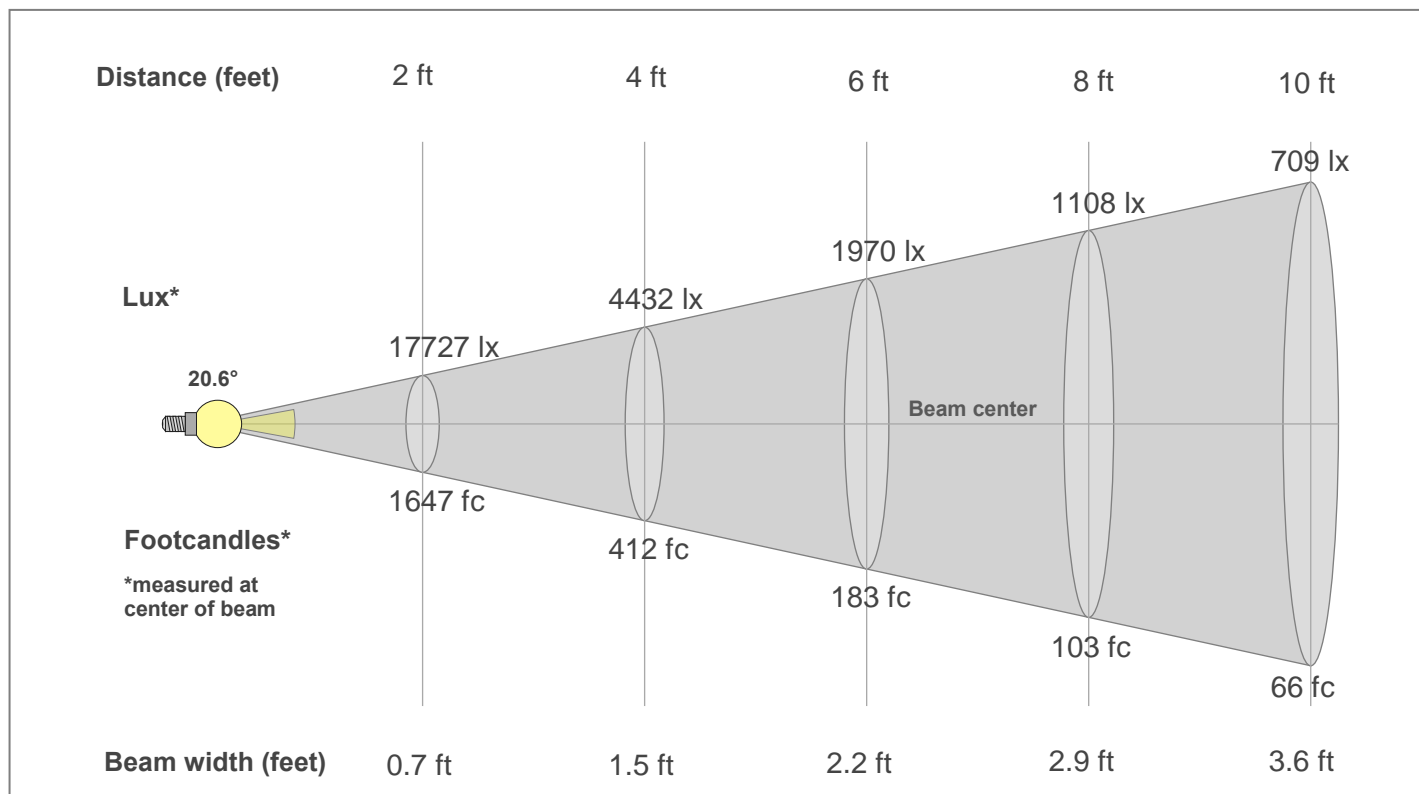
Rg 102.9

Gamut index Rg

Hue Bin	R _f	Shifts (%)	
		Chroma	Hue
1	95	-2%	0%
2	95	-1%	2%
3	91	0%	5%
4	93	0%	2%
5	93	2%	3%
6	93	5%	0%
7	94	1%	-2%
8	96	1%	-3%
9	96	-1%	1%
10	91	-1%	5%
11	88	2%	9%
12	89	5%	3%
13	93	4%	-2%
14	90	6%	-5%
15	95	1%	-3%
16	87	1%	-10%



Beam Details



Beam Intensities from 1-20m

1m	2m	3m	4m	5m	6m	7m	8m	9m	10m	11m	12m	13m	14m	15m	16m	17m	18m	19m	20m
3.3ft	6.6ft	9.8ft	13.1ft	16.4ft	19.7ft	23ft	26.2ft	29.5ft	32.8ft	36.1ft	39.4ft	42.7ft	45.9ft	49.2ft	52.5ft	55.8ft	59.1ft	62.3ft	65.6ft
6587lx	1647lx	732lx	412lx	263lx	183lx	134lx	103lx	81lx	66lx	54lx	46lx	39lx	34lx	29lx	26lx	23lx	20lx	18lx	16lx
612fc	153fc	68fc	38.2fc	24.5fc	17fc	12.5fc	9.6fc	7.6fc	6.1fc	5.1fc	4.2fc	3.6fc	3.1fc	2.7fc	2.4fc	2.1fc	1.9fc	1.7fc	1.5fc

Intensities in 0° c-plane

0°	1°	2°	3°	4°	5°	6°	7°	8°	9°	10°	11°	12°	13°	14°	15°	16°	17°	18°	19°
6587	6551	6422	6228	5980	5687	5328	4912	4452	3966	3475	2991	2532	2099	1702	1349	1055	815	617	461
100%	99%	97%	95%	91%	86%	81%	75%	68%	60%	53%	45%	38%	32%	26%	20%	16%	12%	9%	7%

Intensities in 90° c-plane

0°	1°	2°	3°	4°	5°	6°	7°	8°	9°	10°	11°	12°	13°	14°	15°	16°	17°	18°	19°
6587	6540	6422	6243	5998	5685	5311	4889	4421	3924	3421	2930	2459	2013	1608	1255	959	720	535	394
100%	99%	97%	95%	91%	86%	81%	74%	67%	60%	52%	44%	37%	31%	24%	19%	15%	11%	8%	6%

Intensities in 180° c-plane

0°	1°	2°	3°	4°	5°	6°	7°	8°	9°	10°	11°	12°	13°	14°	15°	16°	17°	18°	19°
6587	6551	6422	6228	5980	5687	5328	4912	4452	3966	3475	2991	2532	2099	1702	1349	1055	815	617	461
100%	99%	97%	95%	91%	86%	81%	75%	68%	60%	53%	45%	38%	32%	26%	20%	16%	12%	9%	7%

Intensities in 270° c-plane

0°	1°	2°	3°	4°	5°	6°	7°	8°	9°	10°	11°	12°	13°	14°	15°	16°	17°	18°	19°
6587	6540	6422	6243	5998	5685	5311	4889	4421	3924	3421	2930	2459	2013	1608	1255	959	720	535	394
100%	99%	97%	95%	91%	86%	81%	74%	67%	60%	52%	44%	37%	31%	24%	19%	15%	11%	8%	6%

Beam angle 50%	Field angle 10%	Cut-off angle 2.5%	Intensity ratio in 120°	Intensity ratio in 90°
20.6°	35.1°	44.6°	99.6%	99.4%