

Photometric / Colorimetric / Electric Report

Fixture Model:

805-J5-TW-15T-3000K-DAL2-8.5-700-FR-LG-P-1-WH-NL

Trim Model:

FR-LG-P-1-WH/NL

Date:

1/20/2025



Light efficiency:

64 Lumen/Watt

Light quality:

CRI: 96.3

Color temperature:

2961 K

CIE 1931:

**x: 0.434
y: 0.394**

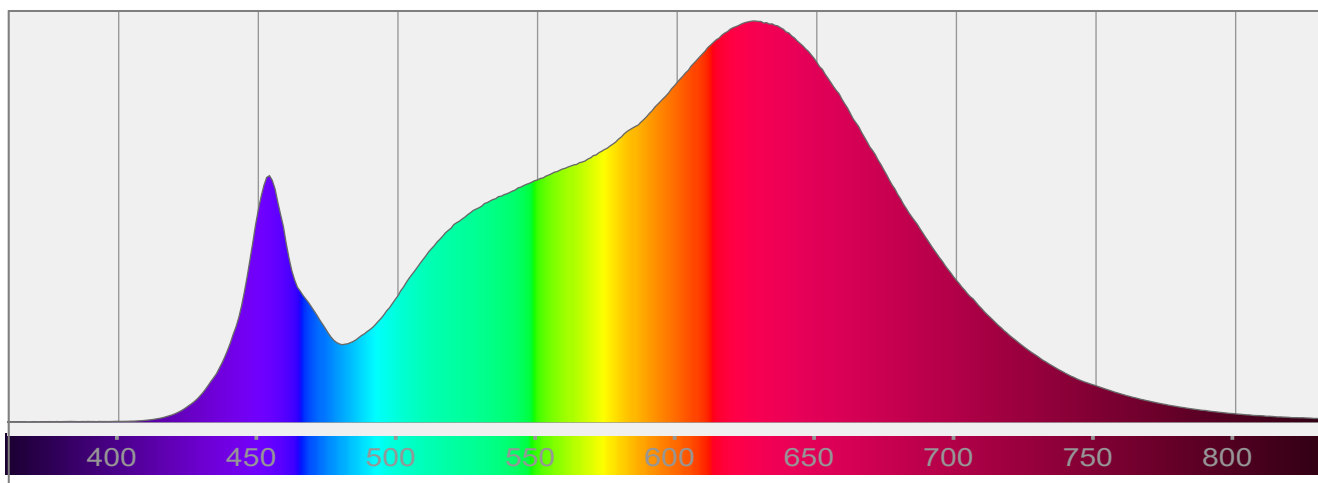
Output: 995 lm

Peak: 6631 cd

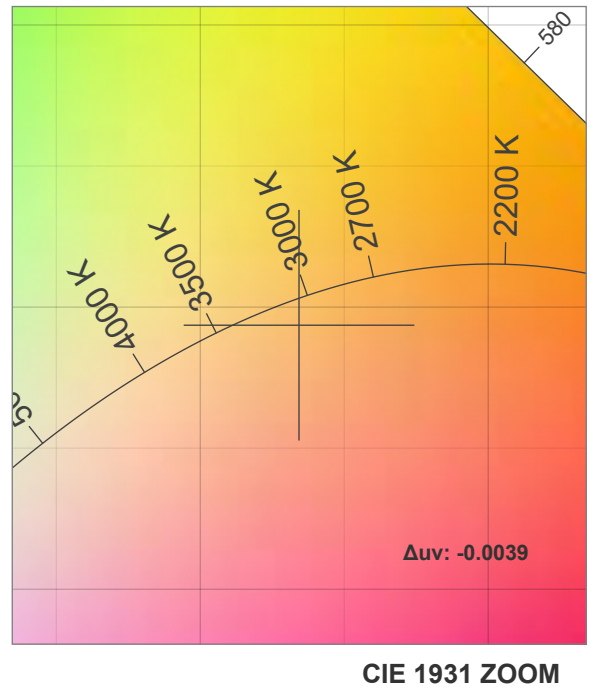
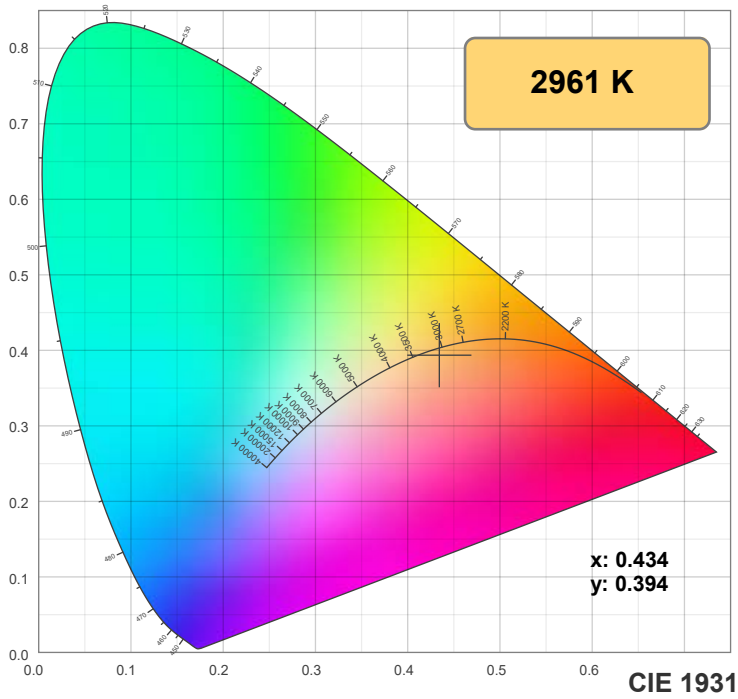
Power: 15.5 W

PF: 0.99

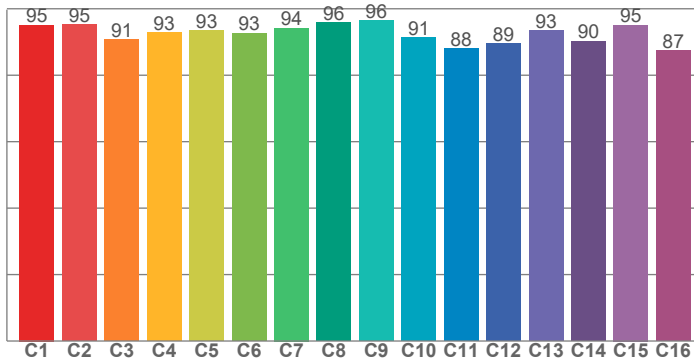
Spectra:



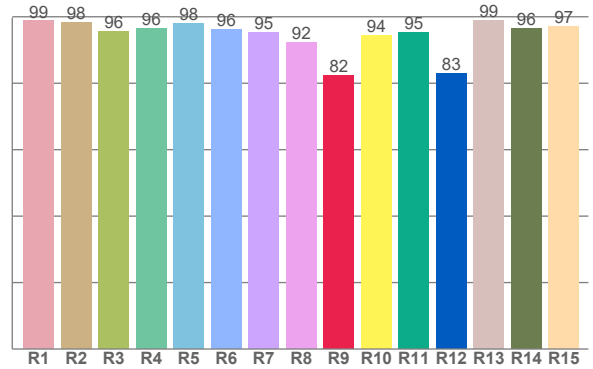
Color Details



TM-30: 92.6



CRI: 96.3 (R1-R8)



CRI R Values:

R1	R2	R3	R4	R5	R6	R7	R8	R9	R10	R11	R12	R13	R14	R15
98.7	98.3	95.6	96.5	98.1	96.2	95.2	92.2	82.4	94.4	95.4	83.0	99.0	96.4	97.2

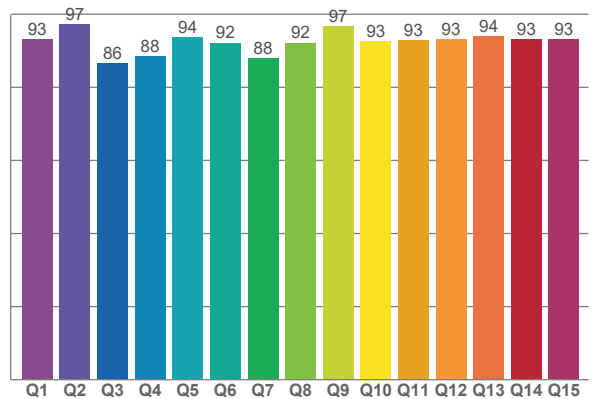
TM30 C Values:

C1	C2	C3	C4	C5	C6	C7	C8	C9	C10	C11	C12	C13	C14	C15	C16
95.1	95.4	90.7	92.9	93.4	92.7	94.2	95.9	96.4	91.4	88.1	89.4	93.4	90.3	95.1	87.4

CQS Q values:

Q1	Q2	Q3	Q4	Q5	Q6	Q7	Q8	Q9	Q10	Q11	Q12	Q13	Q14	Q15
93.2	97.4	86.5	88.4	93.7	92.2	88.0	92.2	96.7	92.6	92.8	93.2	94.1	93.1	93.1

CQS: 91.8



Color Parameters:

CCT	CRI	CRI R9	TM30 Rf	TM30 Rg	CQS	x	y	u	v	Δuv
2961 K	96.3	82.4	92.6	102.9	91.8	0.434	0.394	0.253	0.345	-0.0039

TM-30 Details

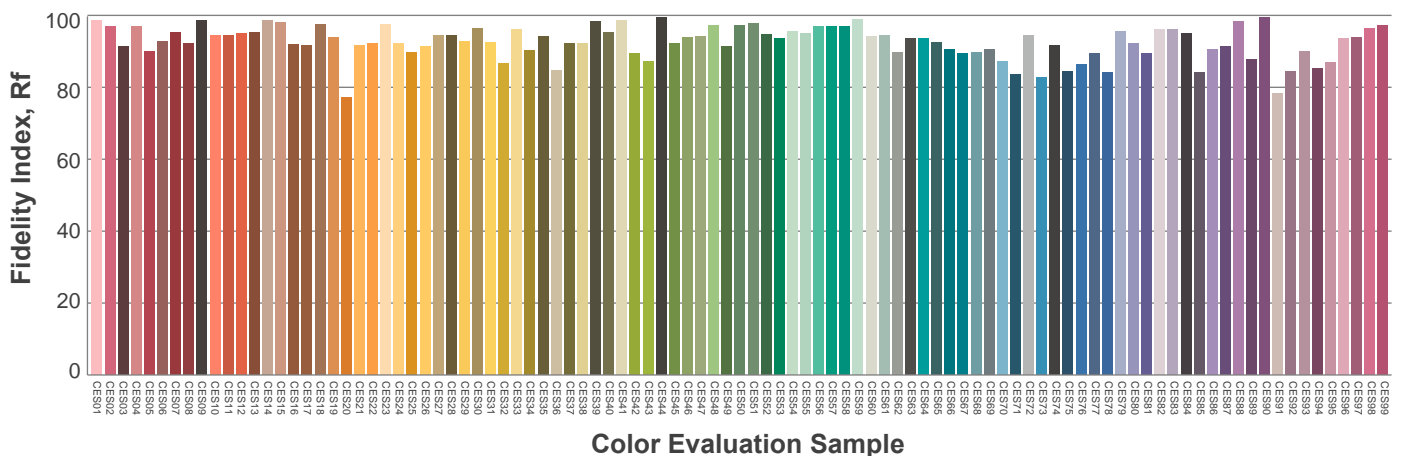
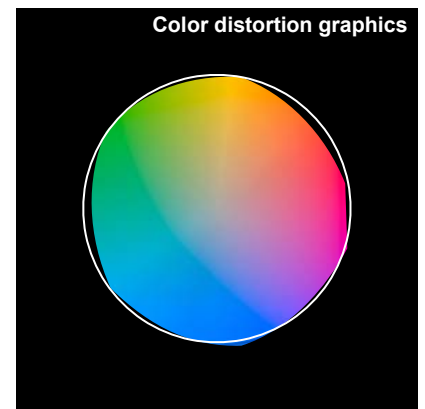
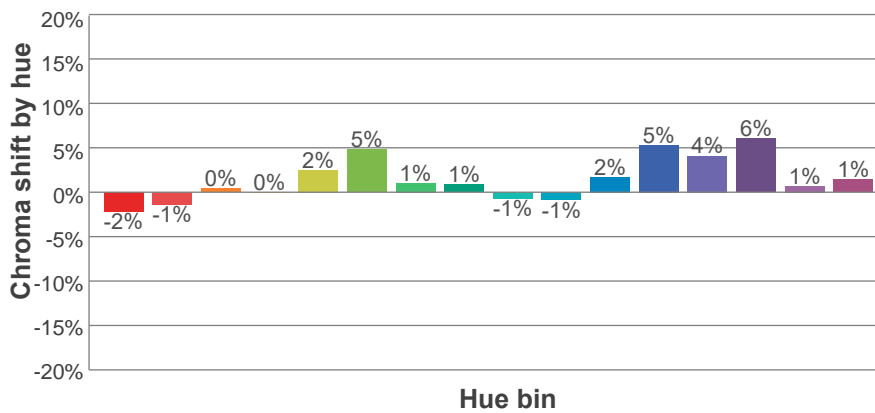
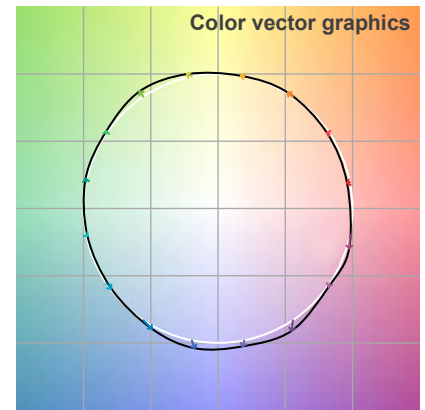
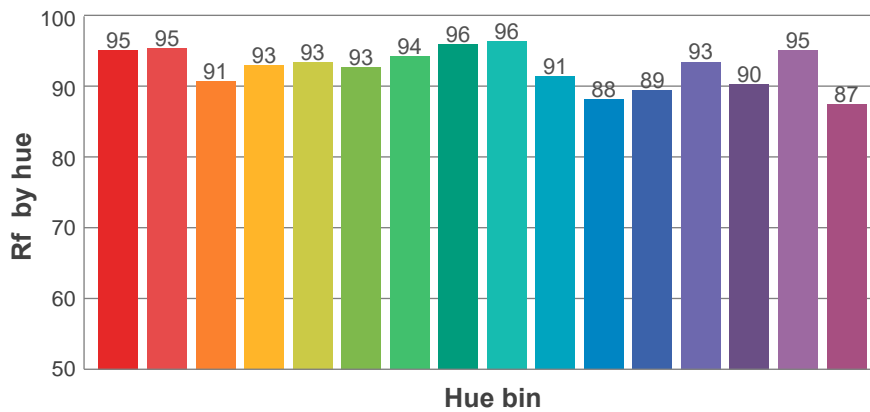
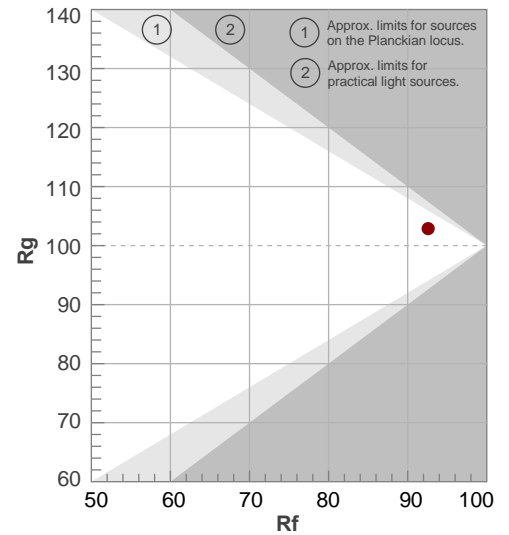
Rf 92.6

Fidelity index Rf

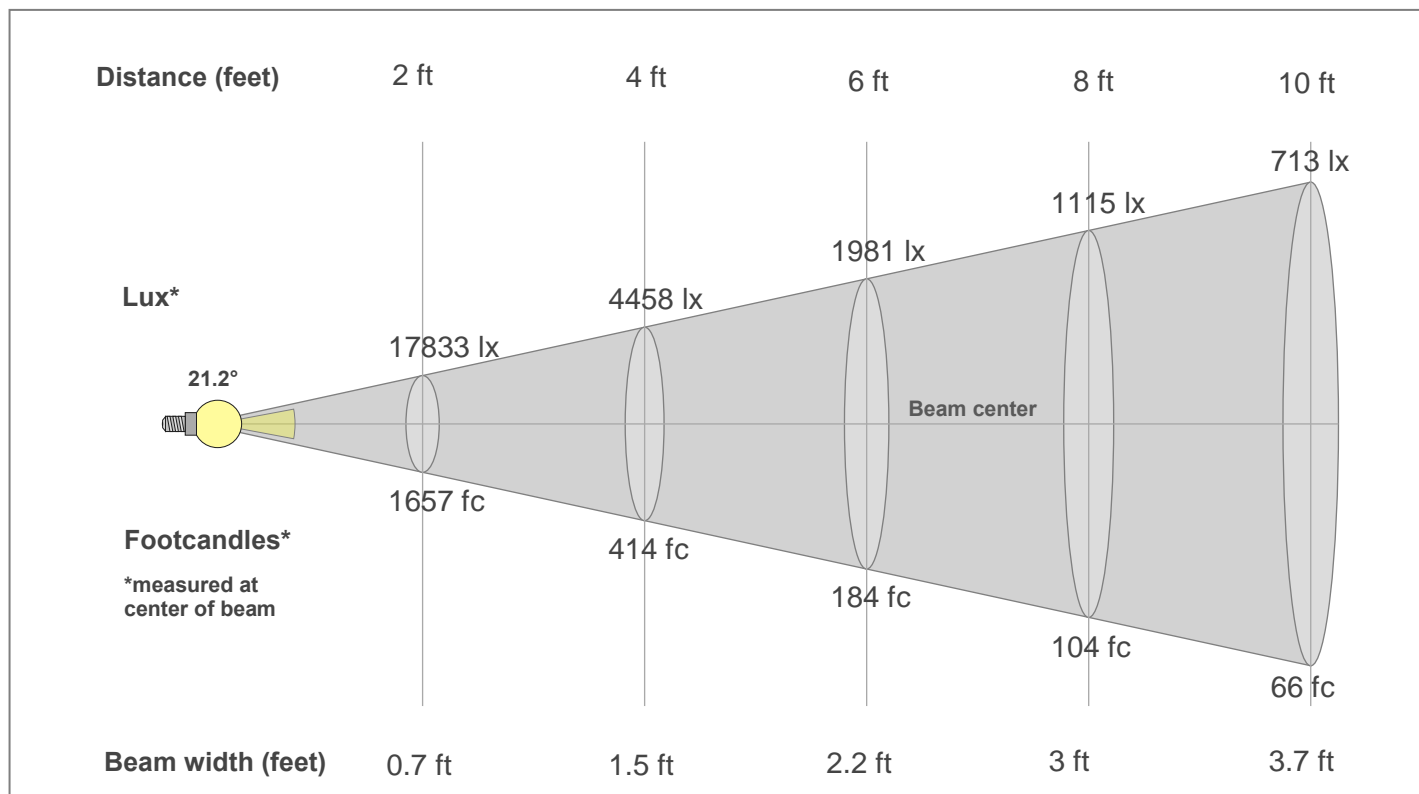
Rg 102.9

Gamut index Rg

Hue Bin	R _f	Shifts (%)	
		Chroma	Hue
1	95	-2%	0%
2	95	-1%	2%
3	91	0%	5%
4	93	0%	2%
5	93	2%	3%
6	93	5%	0%
7	94	1%	-2%
8	96	1%	-3%
9	96	-1%	1%
10	91	-1%	5%
11	88	2%	9%
12	89	5%	3%
13	93	4%	-2%
14	90	6%	-5%
15	95	1%	-3%
16	87	1%	-10%



Beam Details



Beam Intensities from 1-20m

1m	2m	3m	4m	5m	6m	7m	8m	9m	10m	11m	12m	13m	14m	15m	16m	17m	18m	19m	20m
3.3ft	6.6ft	9.8ft	13.1ft	16.4ft	19.7ft	23ft	26.2ft	29.5ft	32.8ft	36.1ft	39.4ft	42.7ft	45.9ft	49.2ft	52.5ft	55.8ft	59.1ft	62.3ft	65.6ft
6627lx	1657lx	736lx	414lx	265lx	184lx	135lx	104lx	82lx	66lx	55lx	46lx	39lx	34lx	29lx	26lx	23lx	20lx	18lx	17lx
615.6fc	153.9fc	68.4fc	38.5fc	24.6fc	17.1fc	12.6fc	9.6fc	7.6fc	6.2fc	5.1fc	4.3fc	3.6fc	3.1fc	2.7fc	2.4fc	2.1fc	1.9fc	1.7fc	1.5fc

Intensities in 0° c-plane

0°	1°	2°	3°	4°	5°	6°	7°	8°	9°	10°	11°	12°	13°	14°	15°	16°	17°	18°	19°
6627	6594	6469	6283	6046	5765	5421	5020	4578	4104	3616	3126	2658	2213	1803	1438	1132	883	677	515
100%	100%	98%	95%	91%	87%	82%	76%	69%	62%	55%	47%	40%	33%	27%	22%	17%	13%	10%	8%

Intensities in 90° c-plane

0°	1°	2°	3°	4°	5°	6°	7°	8°	9°	10°	11°	12°	13°	14°	15°	16°	17°	18°	19°
6627	6583	6467	6293	6060	5767	5417	5019	4572	4088	3588	3092	2608	2147	1727	1360	1051	801	605	456
100%	99%	98%	95%	91%	87%	82%	76%	69%	62%	54%	47%	39%	32%	26%	21%	16%	12%	9%	7%

Intensities in 180° c-plane

0°	1°	2°	3°	4°	5°	6°	7°	8°	9°	10°	11°	12°	13°	14°	15°	16°	17°	18°	19°
6627	6594	6469	6283	6046	5765	5421	5020	4578	4104	3616	3126	2658	2213	1803	1438	1132	883	677	515
100%	100%	98%	95%	91%	87%	82%	76%	69%	62%	55%	47%	40%	33%	27%	22%	17%	13%	10%	8%

Intensities in 270° c-plane

0°	1°	2°	3°	4°	5°	6°	7°	8°	9°	10°	11°	12°	13°	14°	15°	16°	17°	18°	19°
6627	6583	6467	6293	6060	5767	5417	5019	4572	4088	3588	3092	2608	2147	1727	1360	1051	801	605	456
100%	99%	98%	95%	91%	87%	82%	76%	69%	62%	54%	47%	39%	32%	26%	21%	16%	12%	9%	7%

Beam angle 50%	Field angle 10%	Cut-off angle 2.5%	Intensity ratio in 120°	Intensity ratio in 90°
21.2°	35.8°	46.8°	99.6%	99.0%