

Photometric / Colorimetric / Electric Report

Fixture Model:

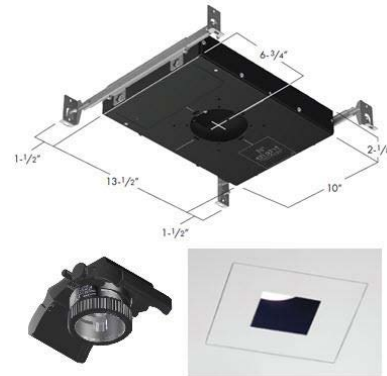
805-J5-HI-3-15-PR1-8.5-350-FS-P-1-WH-35d

Trim Model:

FS-P-1-WH

Date:

1/14/2025



Light efficiency:

59 Lumen/Watt

Light quality:

CRI: 97.2

Color temperature:

3015 K

CIE 1931:

**x: 0.434
y: 0.400**

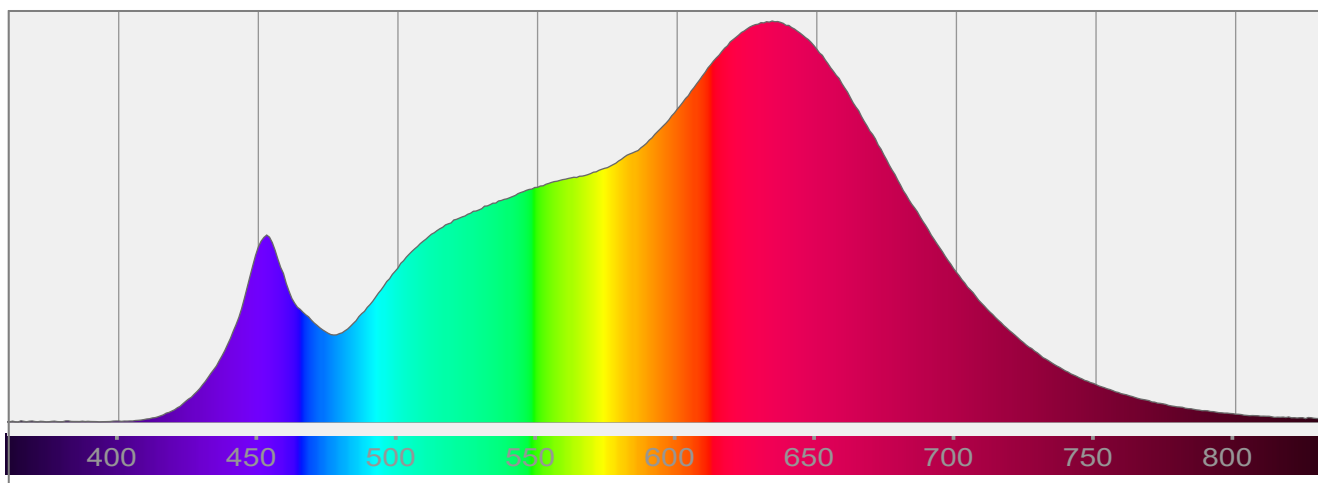
Output: 862 lm

Peak: 7483 cd

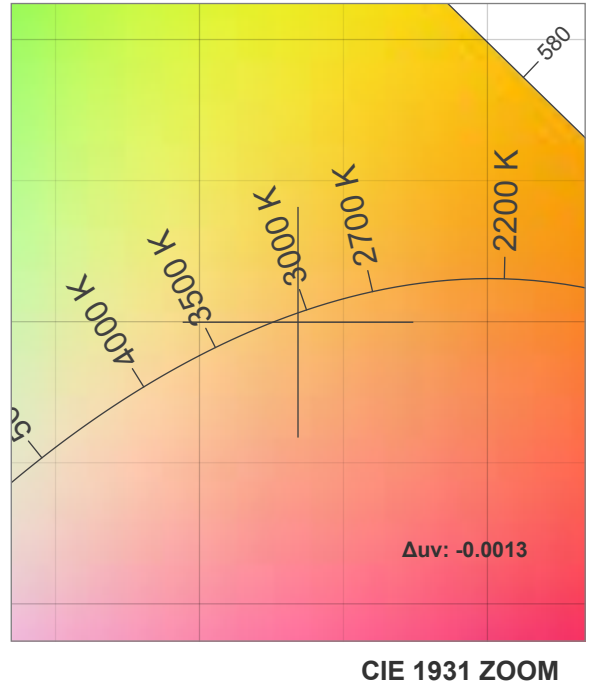
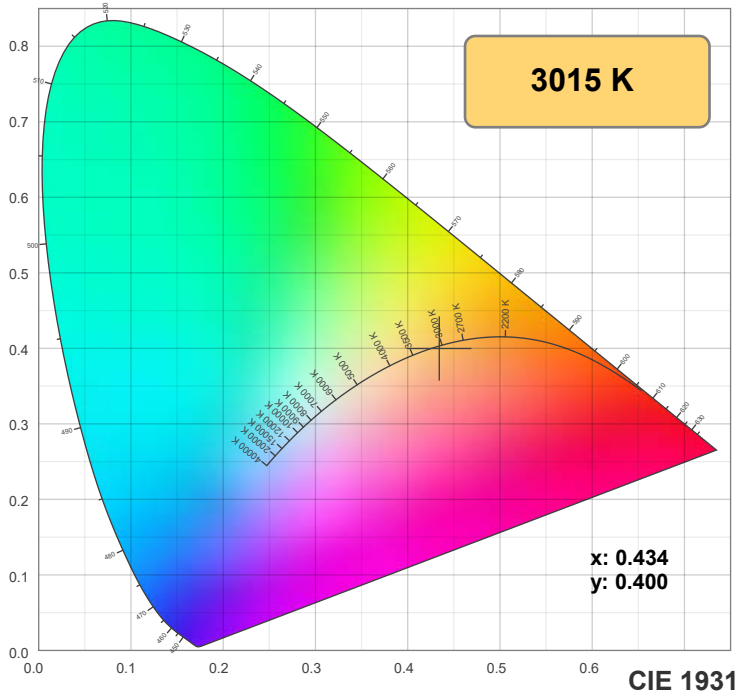
Power: 14.7 W

PF: 0.99

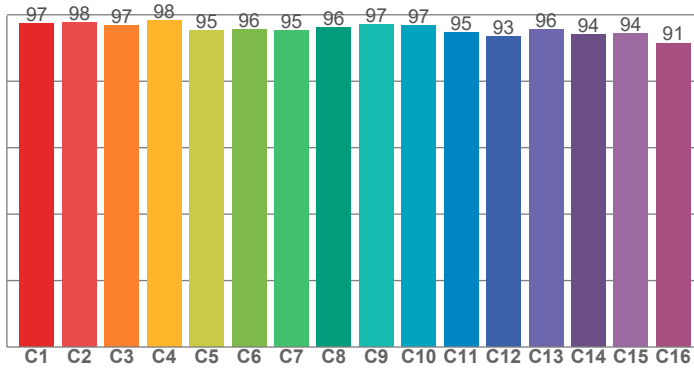
Spectra:



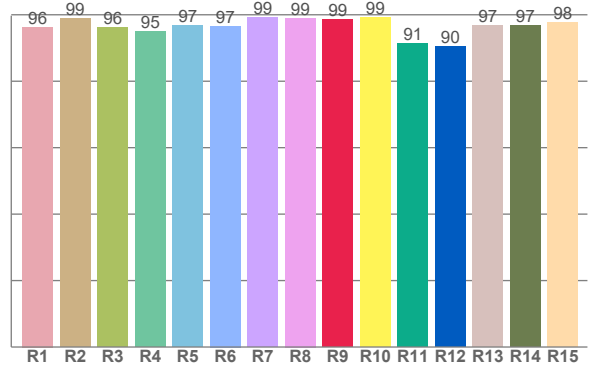
Color Details



TM-30: 95.9



CRI: 97.2 (R1-R8)



CRI R Values:

R1	R2	R3	R4	R5	R6	R7	R8	R9	R10	R11	R12	R13	R14	R15
96.3	98.8	96.1	94.9	96.7	96.6	99.1	99.0	98.6	99.1	91.4	90.5	96.7	96.7	97.7

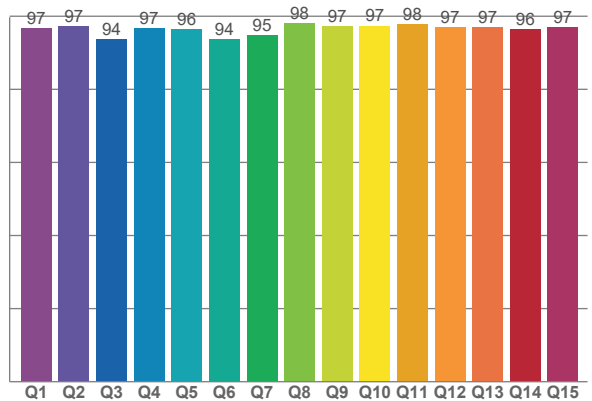
TM30 C Values:

C1	C2	C3	C4	C5	C6	C7	C8	C9	C10	C11	C12	C13	C14	C15	C16
97.3	97.7	96.7	98.2	95.3	95.5	95.2	96.2	97.0	96.9	94.7	93.5	95.6	94.1	94.4	91.5

CQS Q values:

Q1	Q2	Q3	Q4	Q5	Q6	Q7	Q8	Q9	Q10	Q11	Q12	Q13	Q14	Q15
96.7	97.3	93.8	96.7	96.5	93.8	94.7	98.0	97.2	97.4	97.7	96.9	97.1	96.4	97.1

CQS: 96.1



Color Parameters:

CCT	CRI	CRI R9	TM30 Rf	TM30 Rg	CQS	x	y	u	v	Δuv
3015 K	97.2	98.6	95.9	102.6	96.1	0.434	0.400	0.251	0.346	-0.0013

TM-30 Details

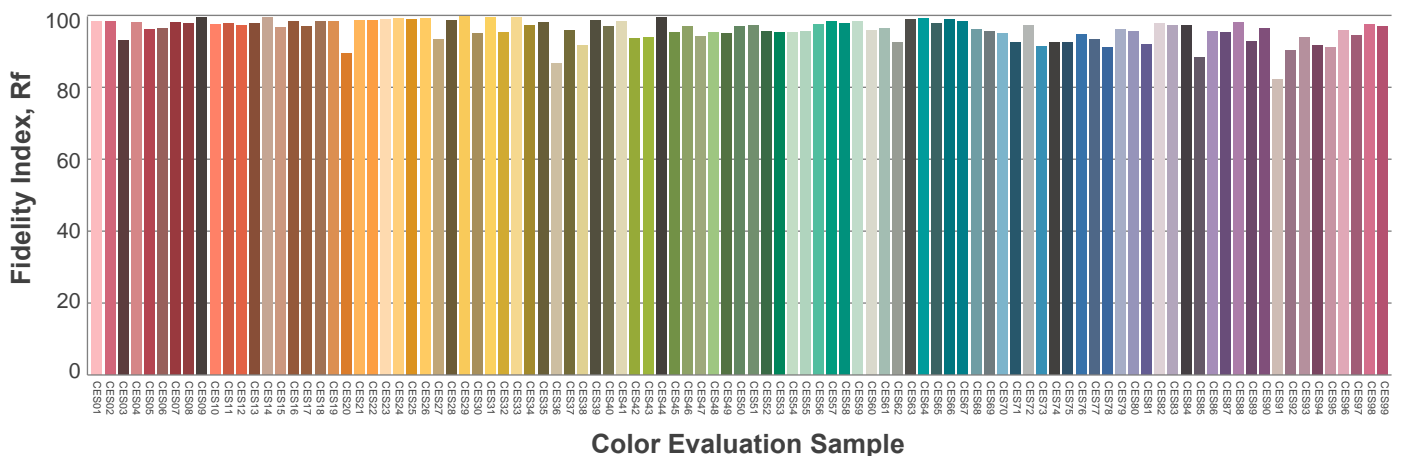
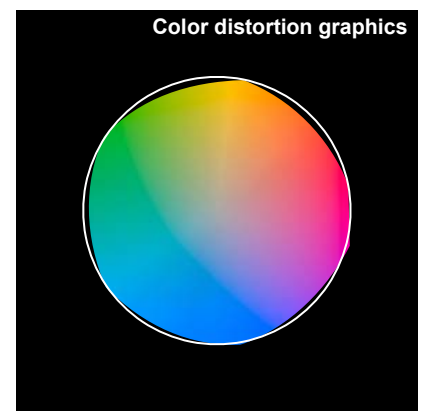
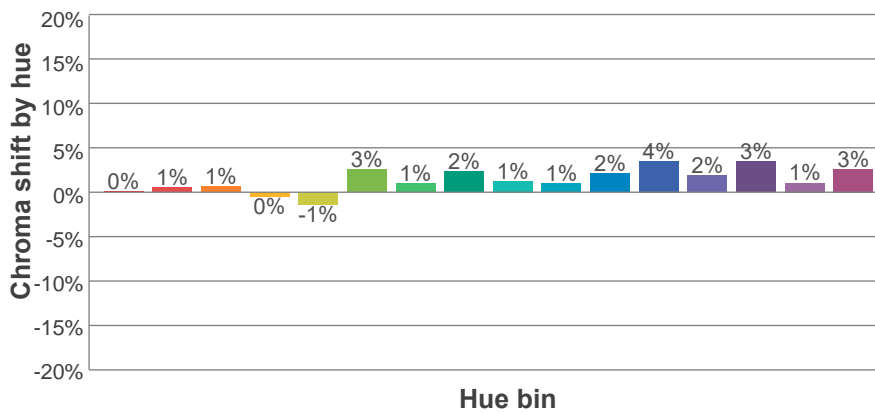
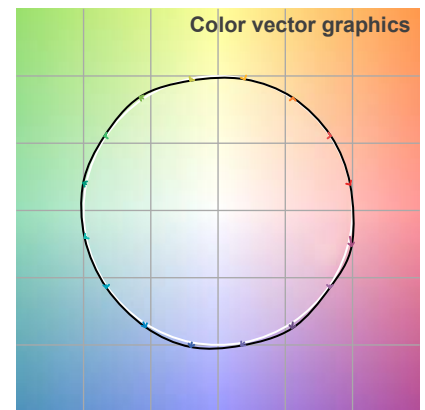
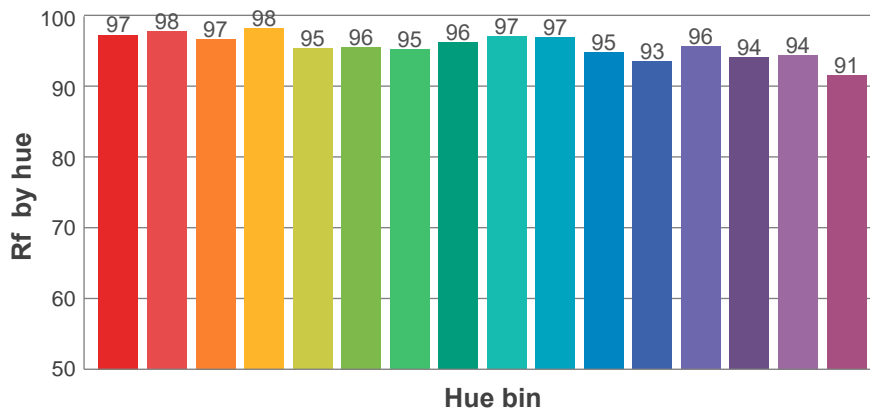
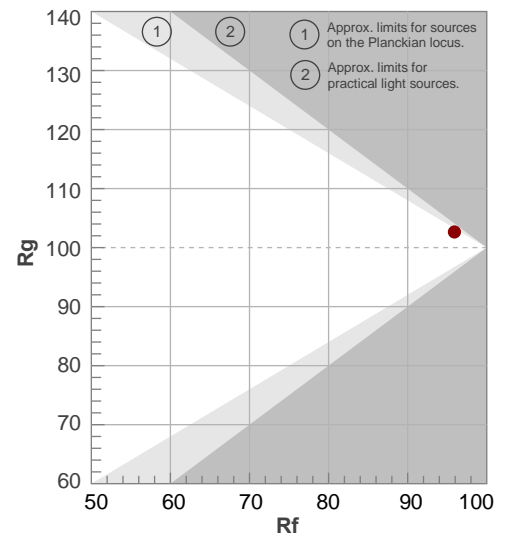
Rf 95.9

Fidelity index Rf

Rg 102.6

Gamut index Rg

Hue Bin	R _f	Shifts (%)	
		Chroma	Hue
1	97	0%	0%
2	98	1%	0%
3	97	1%	0%
4	98	0%	0%
5	95	-1%	1%
6	96	3%	2%
7	95	1%	1%
8	96	2%	-1%
9	97	1%	1%
10	97	1%	2%
11	95	2%	3%
12	93	4%	0%
13	96	2%	-3%
14	94	3%	-3%
15	94	1%	-2%
16	91	3%	-6%



Aiming Angle

