

Photometric / Colorimetric / Electric Report

Fixture Model:

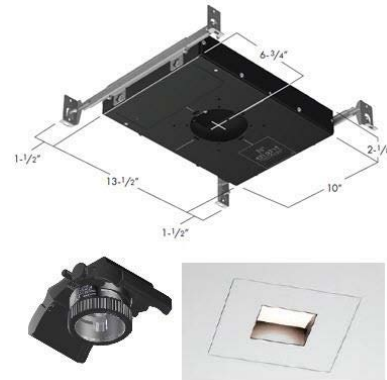
805-J5-HI-3-40-PR1-8.5-350-FS-P-1-WH-WW-8-20d

Trim Model:

FS-P-1-WH-WW-8

Date:

1/16/2025



Light efficiency:

44 Lumen/Watt

Light quality:

CRI: 97.0

Color temperature:

3014 K

CIE 1931:

**x: 0.434
y: 0.400**

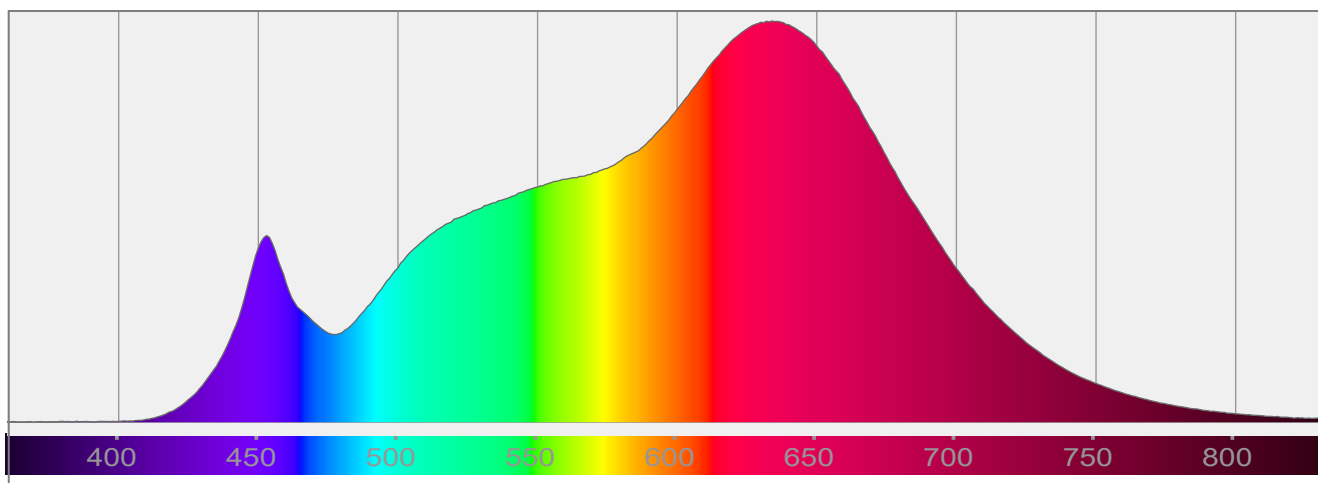
Output: 643 lm

Peak: 441 cd

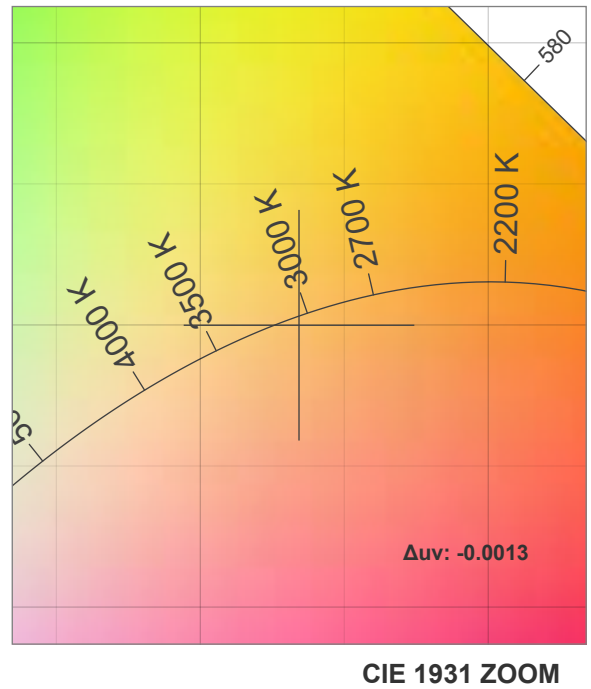
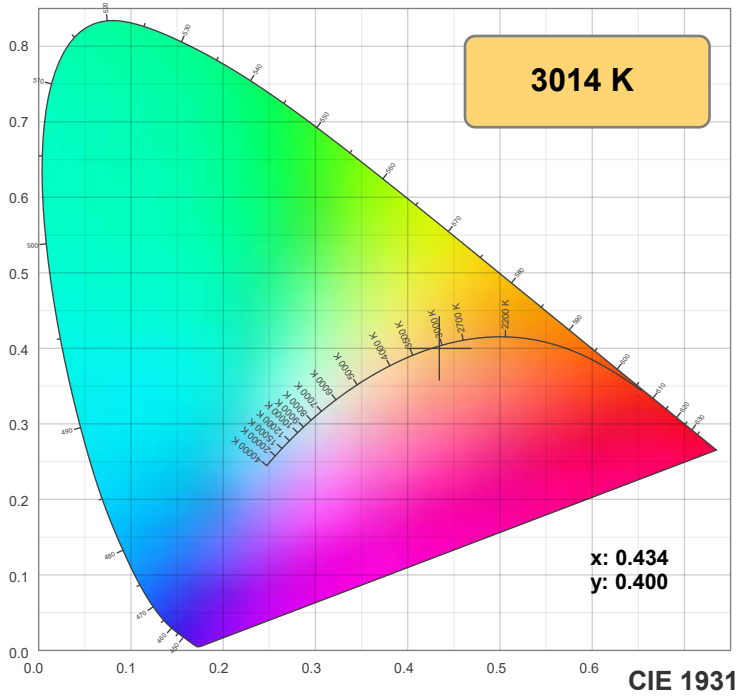
Power: 14.7 W

PF: 0.99

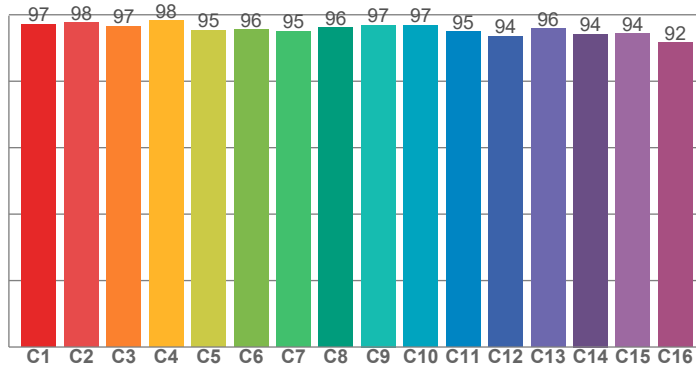
Spectra:



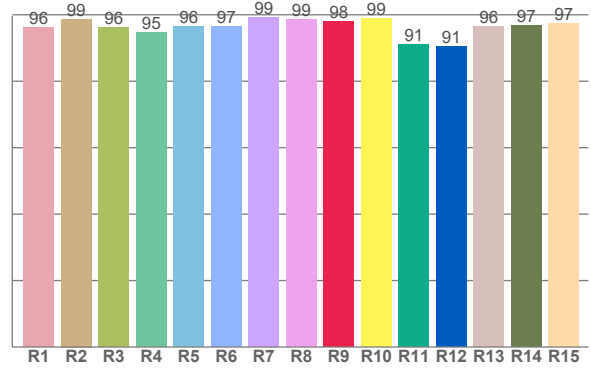
Color Details



TM-30: 95.9



CRI: 97.0 (R1-R8)



CRI R Values:

R1	R2	R3	R4	R5	R6	R7	R8	R9	R10	R11	R12	R13	R14	R15
96.1	98.7	96.1	94.6	96.5	96.5	99.2	98.6	98.1	98.8	91.1	90.6	96.4	96.7	97.4

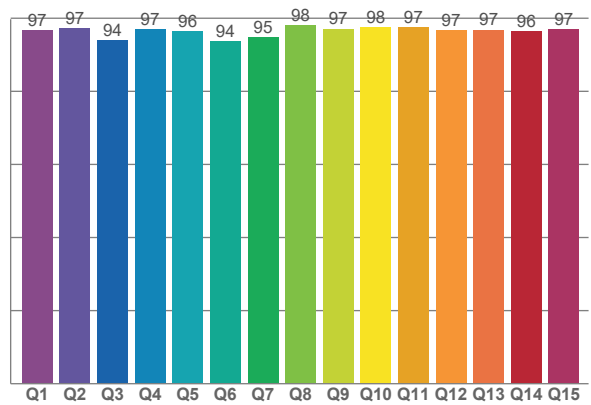
TM30 C Values:

C1	C2	C3	C4	C5	C6	C7	C8	C9	C10	C11	C12	C13	C14	C15	C16
97.2	97.6	96.6	98.2	95.4	95.6	95.1	96.1	96.9	96.9	94.8	93.6	95.7	94.2	94.4	91.6

CQS Q values:

Q1	Q2	Q3	Q4	Q5	Q6	Q7	Q8	Q9	Q10	Q11	Q12	Q13	Q14	Q15
96.8	97.4	94.0	96.9	96.3	93.7	94.8	98.1	97.1	97.5	97.5	96.6	96.8	96.4	97.1

CQS: 96.1



Color Parameters:

CCT	CRI	CRI R9	TM30 Rf	TM30 Rg	CQS	x	y	u	v	Δuv
3014 K	97.0	98.1	95.9	102.7	96.1	0.434	0.400	0.251	0.346	-0.0013

TM-30 Details

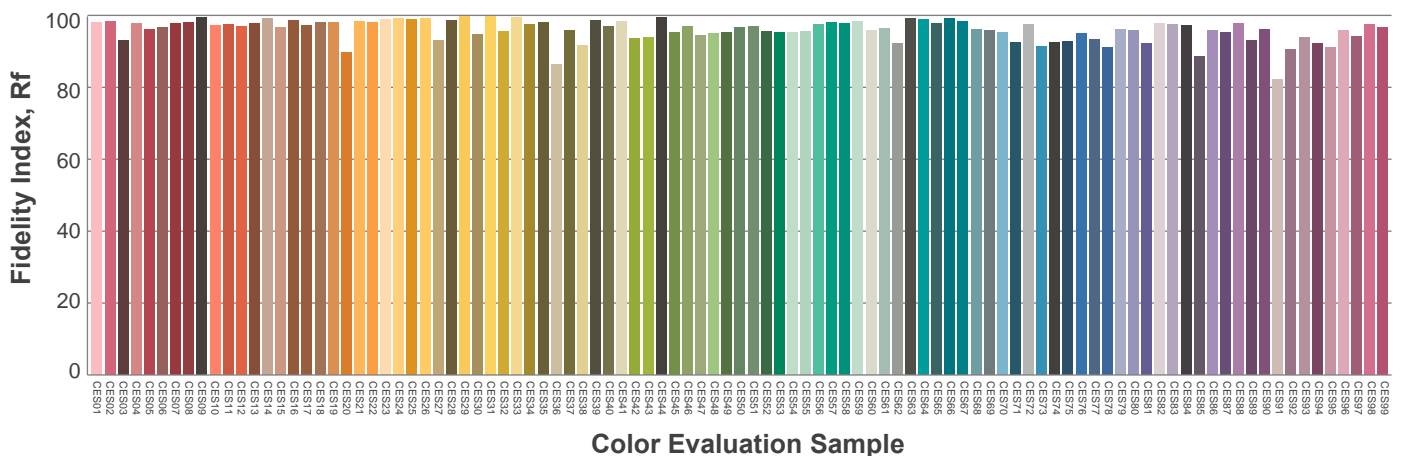
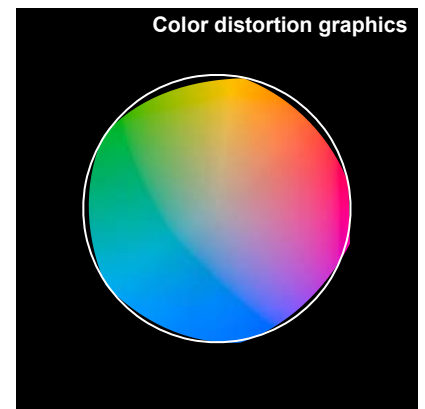
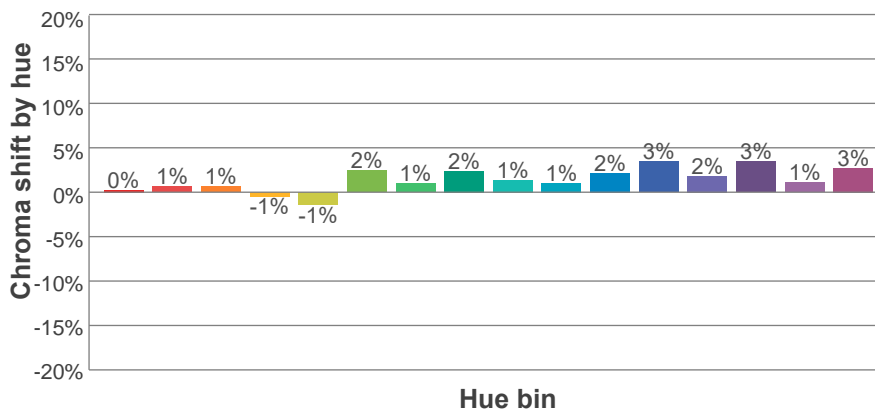
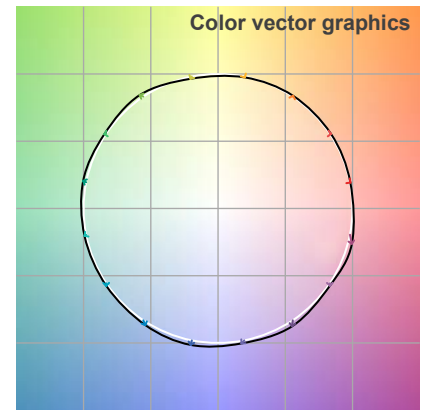
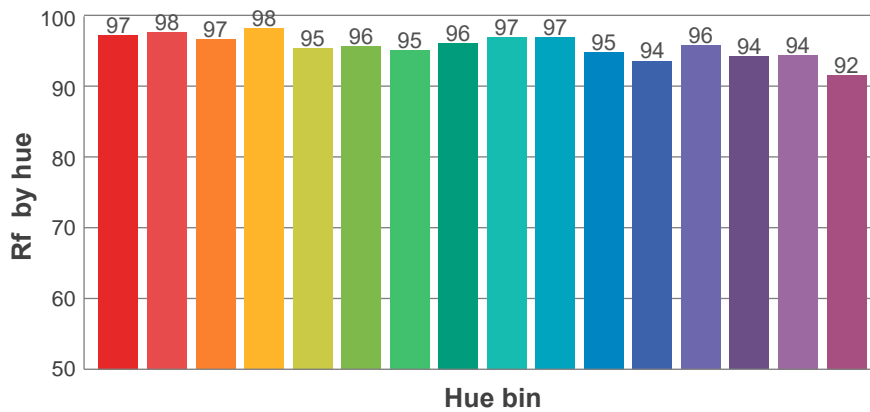
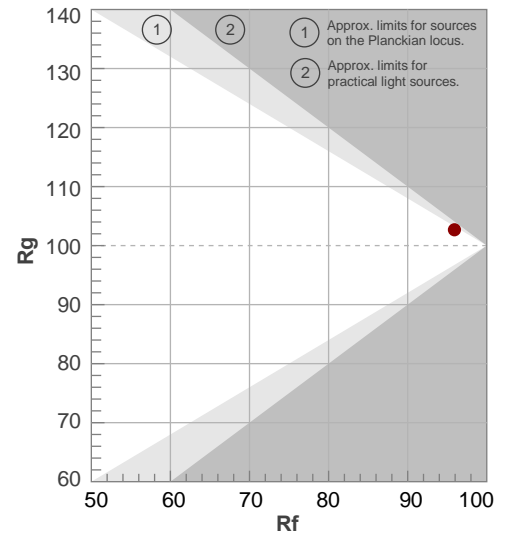
Rf 95.9

Fidelity index Rf

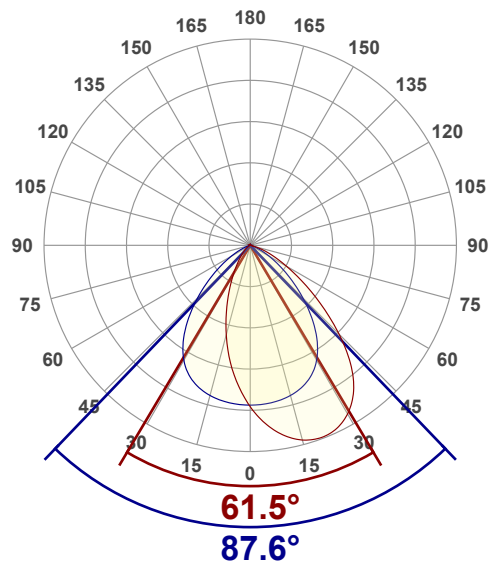
Rg 102.7

Gamut index Rg

Hue Bin	R _f	Shifts (%)	
		Chroma	Hue
1	97	0%	0%
2	98	1%	-1%
3	97	1%	0%
4	98	-1%	0%
5	95	-1%	1%
6	96	2%	2%
7	95	1%	1%
8	96	2%	-1%
9	97	1%	1%
10	97	1%	2%
11	95	2%	3%
12	94	3%	0%
13	96	2%	-3%
14	94	3%	-3%
15	94	1%	-2%
16	92	3%	-6%



Angular Distribution Through 0° and 90° Planes



Beam Angle: 87.6°W x 61.5°L

Beam Details

