

## Photometric / Colorimetric / Electric Report

Fixture Model:

**805-J5-HI-3-25-PR1-8.5-350-FS-LG-P-1-WH-NL**

Trim Model:

**FS-LG-P-1-WH/NL**

Date:

**1/15/2025**



Light efficiency:

**59 Lumen/Watt**

Light quality:

**CRI: 97.2**

Color temperature:

**3022 K**

CIE 1931:

**x: 0.434  
y: 0.401**

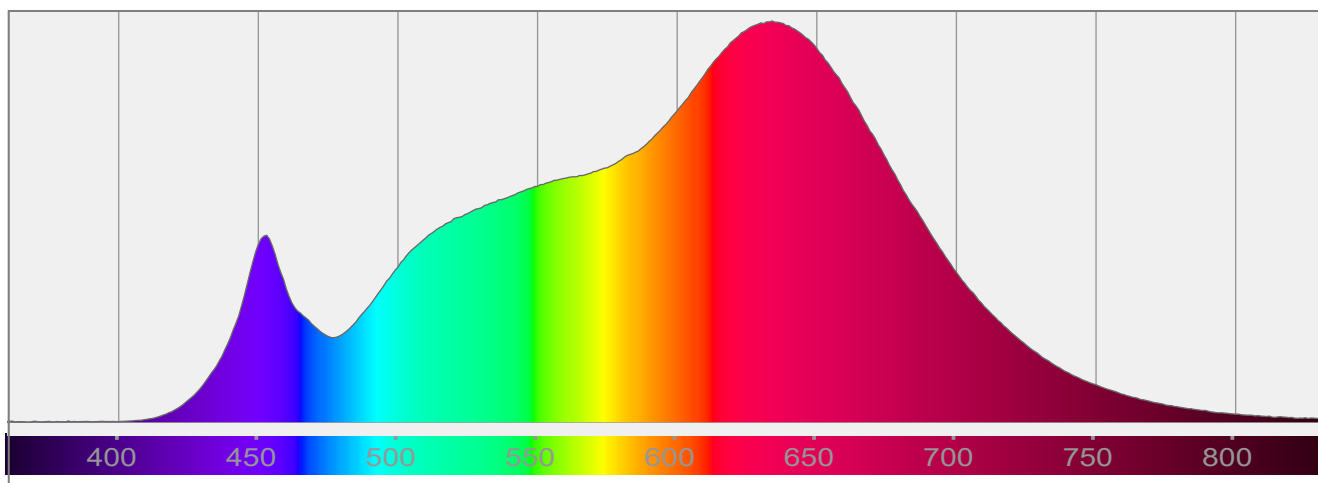
**Output: 870 lm**

**Peak: 3993 cd**

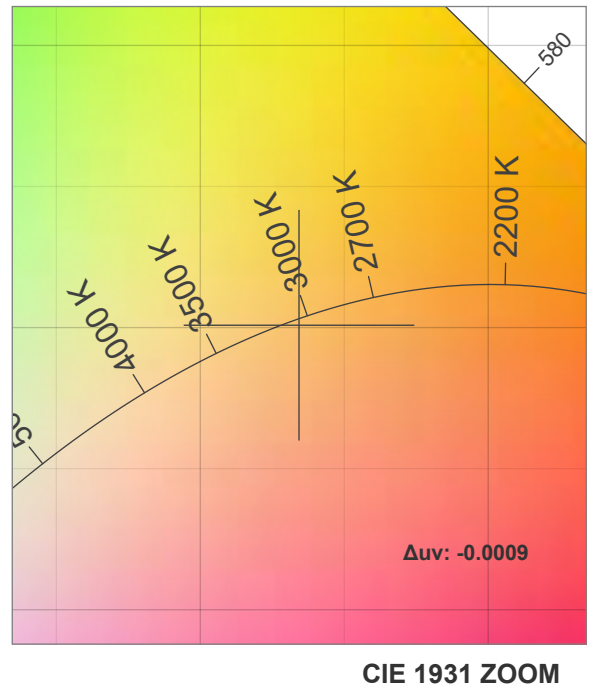
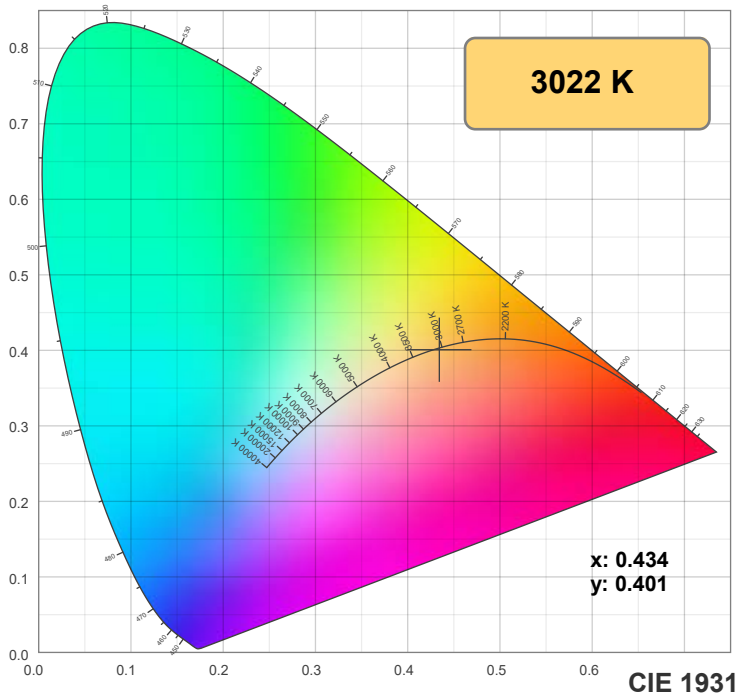
**Power: 14.8 W**

**PF: 0.99**

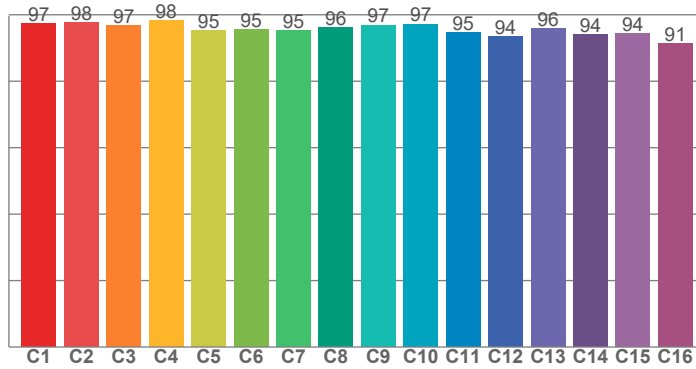
Spectra:



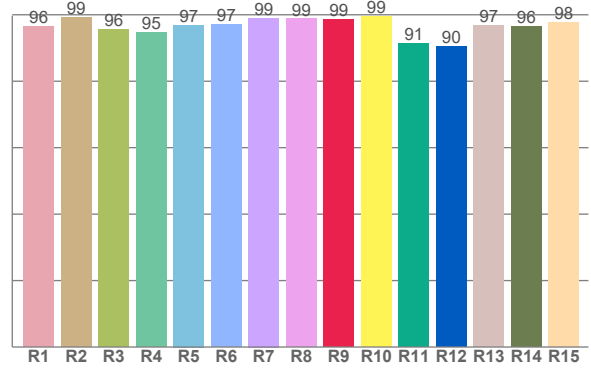
## Color Details



**TM-30: 95.9**



**CRI: 97.2 (R1-R8)**



**CRI R Values:**

R1	R2	R3	R4	R5	R6	R7	R8	R9	R10	R11	R12	R13	R14	R15
96.4	99.2	95.7	94.7	96.9	97.1	99.0	98.8	98.6	99.5	91.3	90.5	96.9	96.5	97.8

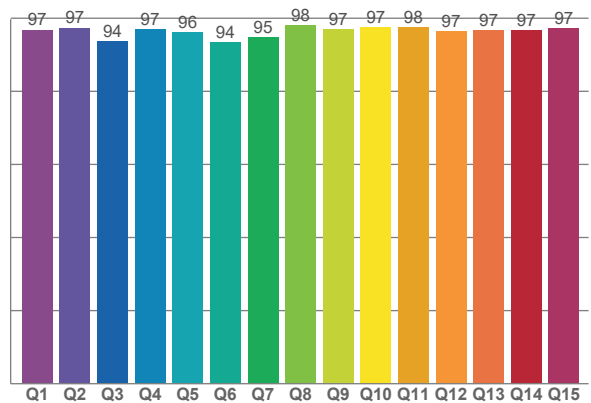
**TM30 C Values:**

C1	C2	C3	C4	C5	C6	C7	C8	C9	C10	C11	C12	C13	C14	C15	C16
97.2	97.7	96.7	98.2	95.4	95.5	95.3	96.1	96.9	97.2	94.7	93.5	95.8	94.2	94.4	91.5

**CQS Q values:**

Q1	Q2	Q3	Q4	Q5	Q6	Q7	Q8	Q9	Q10	Q11	Q12	Q13	Q14	Q15
96.8	97.4	93.8	96.9	96.2	93.5	94.8	98.2	97.0	97.4	97.5	96.6	96.7	96.7	97.3

**CQS: 96.1**



**Color Parameters:**

CCT	CRI	CRI R9	TM30 Rf	TM30 Rg	CQS	x	y	u	v	Δuv
3022 K	97.2	98.6	95.9	102.6	96.1	0.434	0.401	0.250	0.346	-0.0009

# TM-30 Details

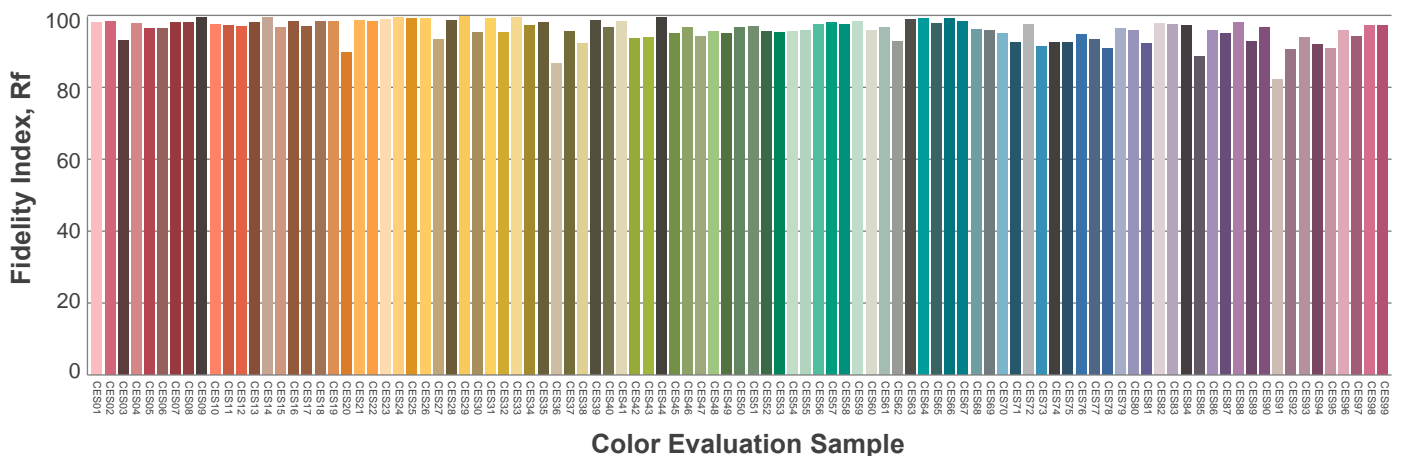
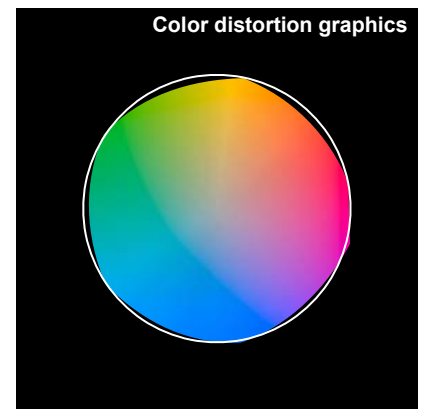
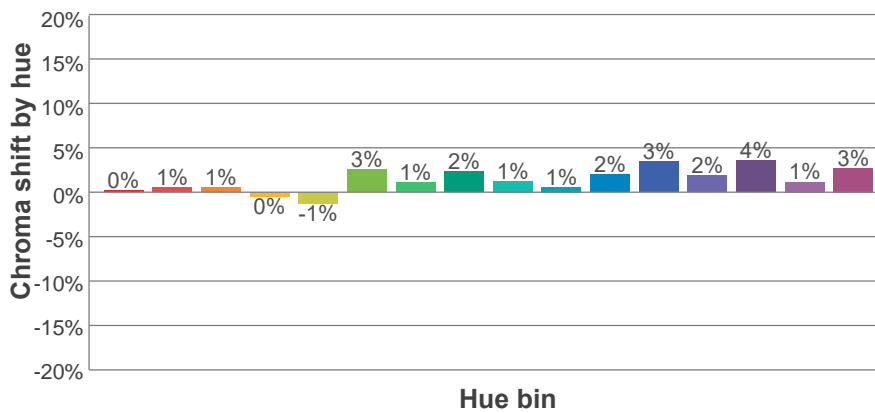
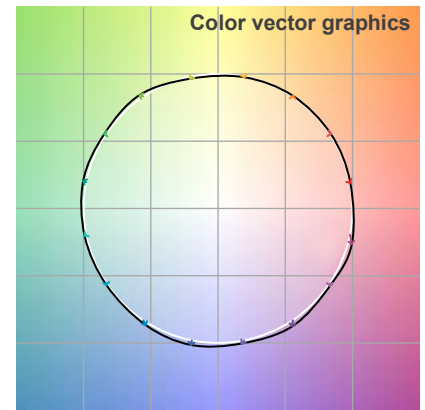
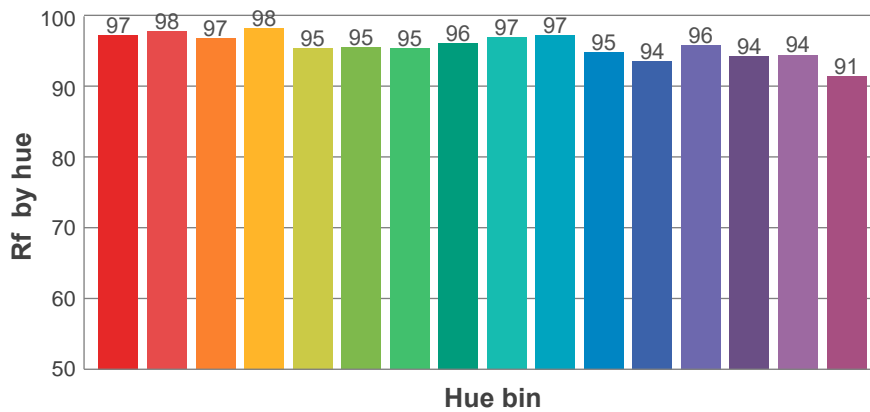
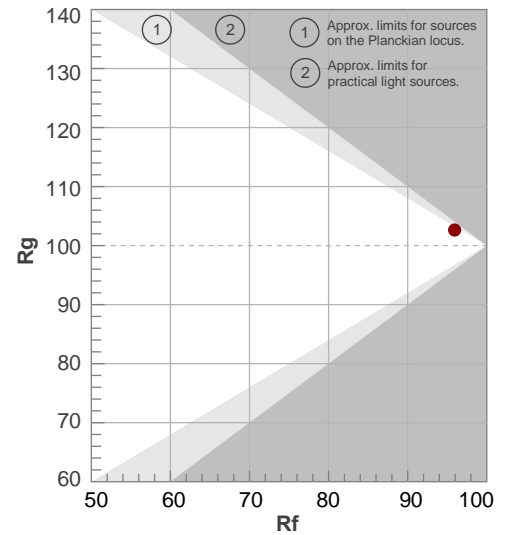
**Rf 95.9**

Fidelity index Rf

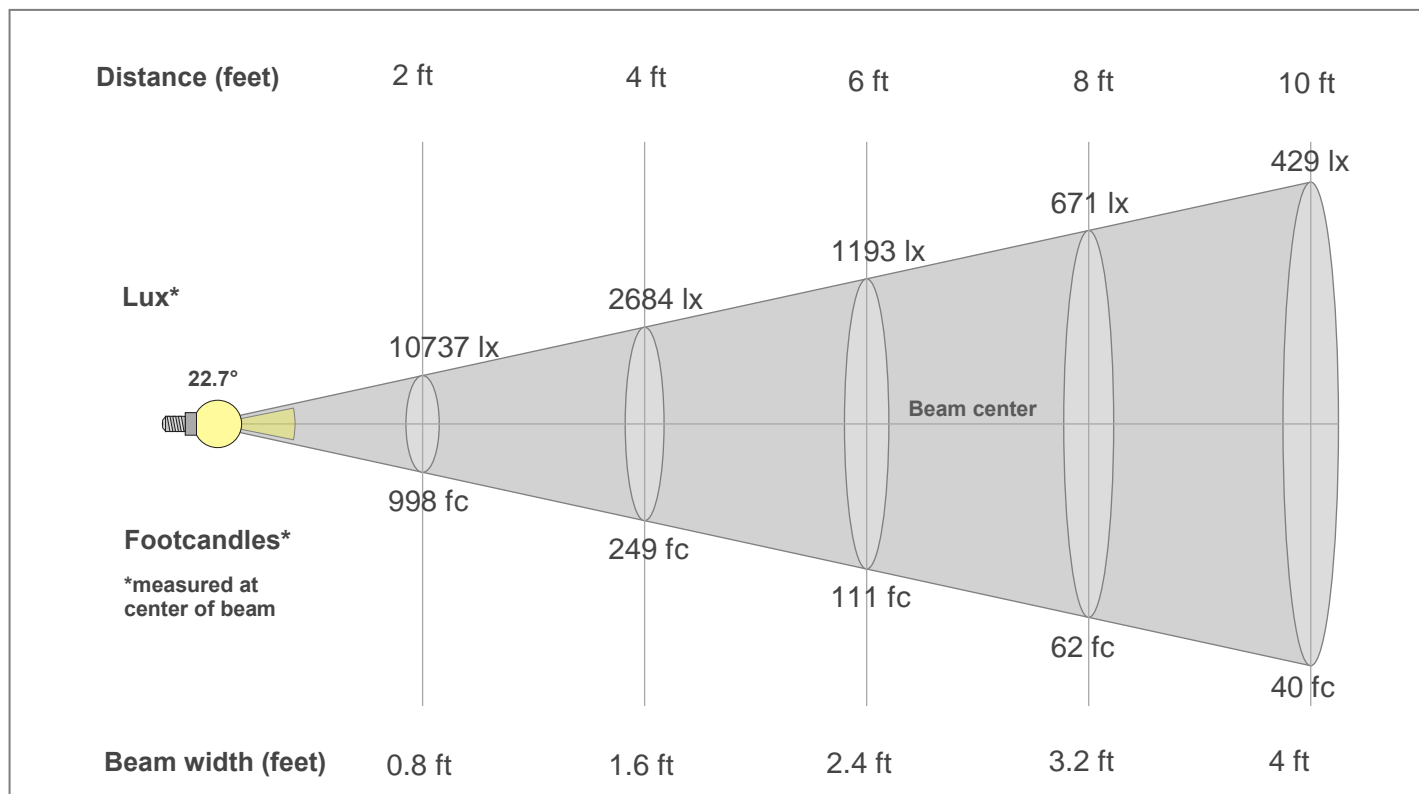
**Rg 102.6**

Gamut index Rg

Hue Bin	R <sub>f</sub>	Shifts (%)	
		Chroma	Hue
1	97	0%	0%
2	98	1%	-1%
3	97	1%	0%
4	98	0%	0%
5	95	-1%	1%
6	95	3%	2%
7	95	1%	1%
8	96	2%	-1%
9	97	1%	1%
10	97	1%	1%
11	95	2%	3%
12	94	3%	0%
13	96	2%	-2%
14	94	4%	-3%
15	94	1%	-2%
16	91	3%	-6%



## Beam Details



### Beam Intensities from 1-20m

1m	2m	3m	4m	5m	6m	7m	8m	9m	10m	11m	12m	13m	14m	15m	16m	17m	18m	19m	20m
3.3ft	6.6ft	9.8ft	13.1ft	16.4ft	19.7ft	23ft	26.2ft	29.5ft	32.8ft	36.1ft	39.4ft	42.7ft	45.9ft	49.2ft	52.5ft	55.8ft	59.1ft	62.3ft	65.6ft
3990lx	998lx	443lx	249lx	160lx	111lx	81lx	62lx	49lx	40lx	33lx	28lx	24lx	20lx	18lx	16lx	14lx	12lx	11lx	10lx
370.7fc	92.7fc	41.2fc	23.2fc	14.8fc	10.3fc	7.6fc	5.8fc	4.6fc	3.7fc	3.1fc	2.6fc	2.2fc	1.9fc	1.6fc	1.4fc	1.3fc	1.1fc	1fc	0.9fc

### Intensities in 0° c-plane

0°	2°	4°	6°	8°	10°	12°	14°	16°	18°	20°	22°	24°	26°	28°	30°	32°	34°	36°	38°
3990	3907	3653	3264	2806	2316	1848	1437	1092	808	585	419	307	235	183	146	118	95	79	67
100%	98%	92%	82%	70%	58%	46%	36%	27%	20%	15%	10%	8%	6%	5%	4%	3%	2%	2%	2%

### Intensities in 90° c-plane

0°	2°	4°	6°	8°	10°	12°	14°	16°	18°	20°	22°	24°	26°	28°	30°	32°	34°	36°	38°
3990	3901	3648	3261	2801	2315	1848	1431	1087	802	582	418	308	237	186	149	120	98	81	68
100%	98%	91%	82%	70%	58%	46%	36%	27%	20%	15%	10%	8%	6%	5%	4%	3%	2%	2%	2%

### Intensities in 180° c-plane

0°	2°	4°	6°	8°	10°	12°	14°	16°	18°	20°	22°	24°	26°	28°	30°	32°	34°	36°	38°
3990	3907	3653	3264	2806	2316	1848	1437	1092	808	585	419	307	235	183	146	118	95	79	67
100%	98%	92%	82%	70%	58%	46%	36%	27%	20%	15%	10%	8%	6%	5%	4%	3%	2%	2%	2%

### Intensities in 270° c-plane

0°	2°	4°	6°	8°	10°	12°	14°	16°	18°	20°	22°	24°	26°	28°	30°	32°	34°	36°	38°
3990	3901	3648	3261	2801	2315	1848	1431	1087	802	582	418	308	237	186	149	120	98	81	68
100%	98%	91%	82%	70%	58%	46%	36%	27%	20%	15%	10%	8%	6%	5%	4%	3%	2%	2%	2%

Beam angle 50%	Field angle 10%	Cut-off angle 2.5%	Intensity ratio in 120°	Intensity ratio in 90°
22.7°	44.6°	67.4°	99.3%	97.3%