

Photometric / Colorimetric / Electric Report

Fixture Model:

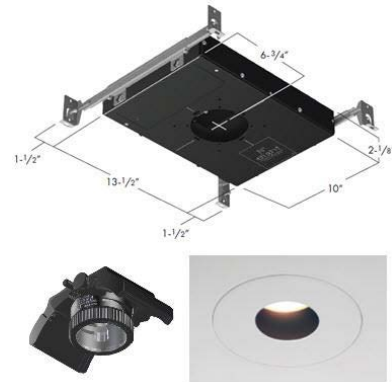
805-J5-HI-3-15-PR1-8.5-350-FR-P-1-WH

Trim Model:

FR-P-1-WH

Date:

1/10/2025



Light efficiency:

60 Lumen/Watt

Light quality:

CRI: 97.2

Color temperature:

3005 K

CIE 1931:

**x: 0.435
y: 0.400**

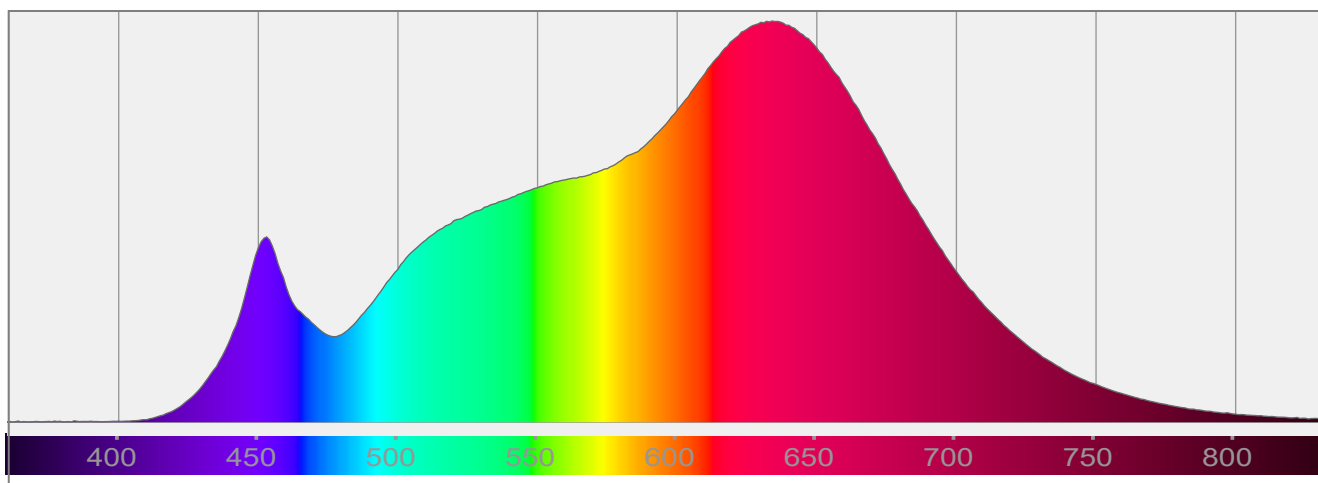
Output: 879 lm

Peak: 7861 cd

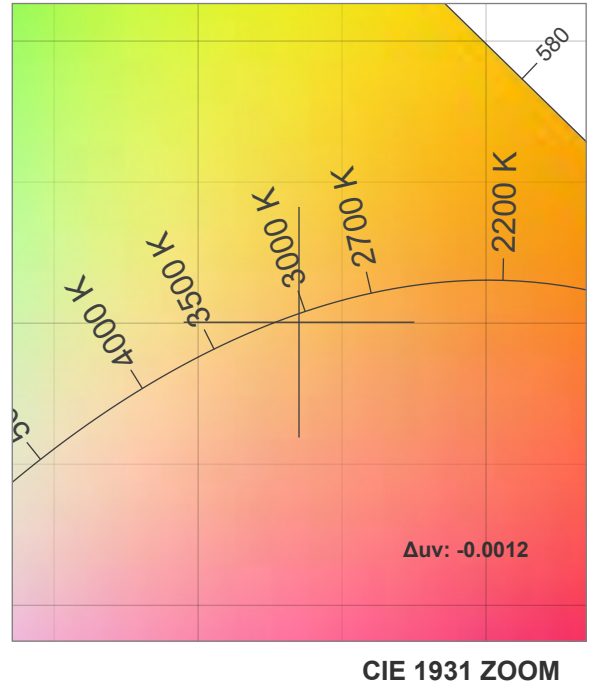
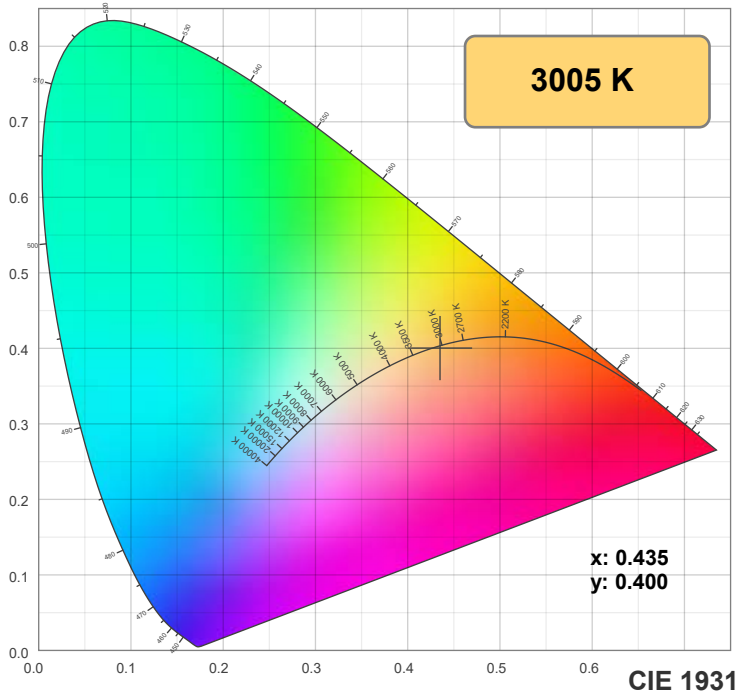
Power: 14.7 W

PF: 0.99

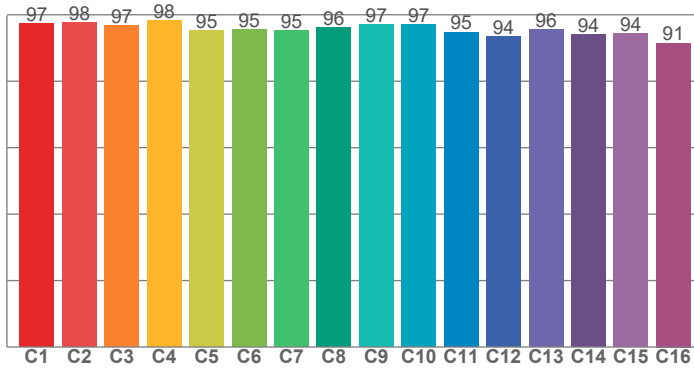
Spectra:



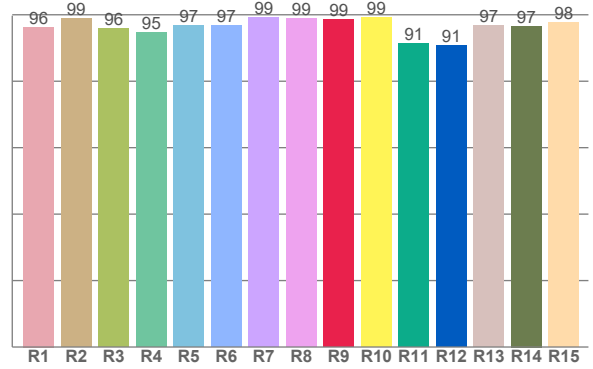
Color Details



TM-30: 95.9



CRI: 97.2 (R1-R8)



CRI R Values:

R1	R2	R3	R4	R5	R6	R7	R8	R9	R10	R11	R12	R13	R14	R15
96.3	98.9	95.9	94.8	96.8	96.7	99.1	98.9	98.6	99.2	91.3	90.6	96.7	96.6	97.2

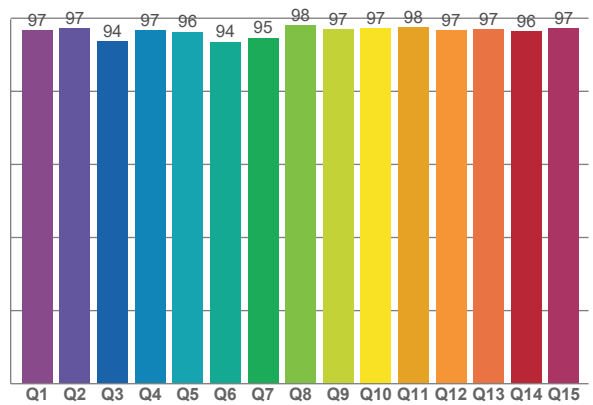
TM30 C Values:

C1	C2	C3	C4	C5	C6	C7	C8	C9	C10	C11	C12	C13	C14	C15	C16
97.2	97.7	96.7	98.2	95.4	95.4	95.2	96.1	97.0	97.0	94.8	93.5	95.7	94.1	94.4	91.5

CQS Q values:

Q1	Q2	Q3	Q4	Q5	Q6	Q7	Q8	Q9	Q10	Q11	Q12	Q13	Q14	Q15
96.8	97.3	93.8	96.8	96.3	93.5	94.6	98.0	97.1	97.4	97.6	96.7	96.9	96.5	97.2

CQS: 96.0



Color Parameters:

CCT	CRI	CRI R9	TM30 Rf	TM30 Rg	CQS	x	y	u	v	Δuv
3005 K	97.2	98.6	95.9	102.7	96.0	0.435	0.400	0.251	0.346	-0.0012

TM-30 Details

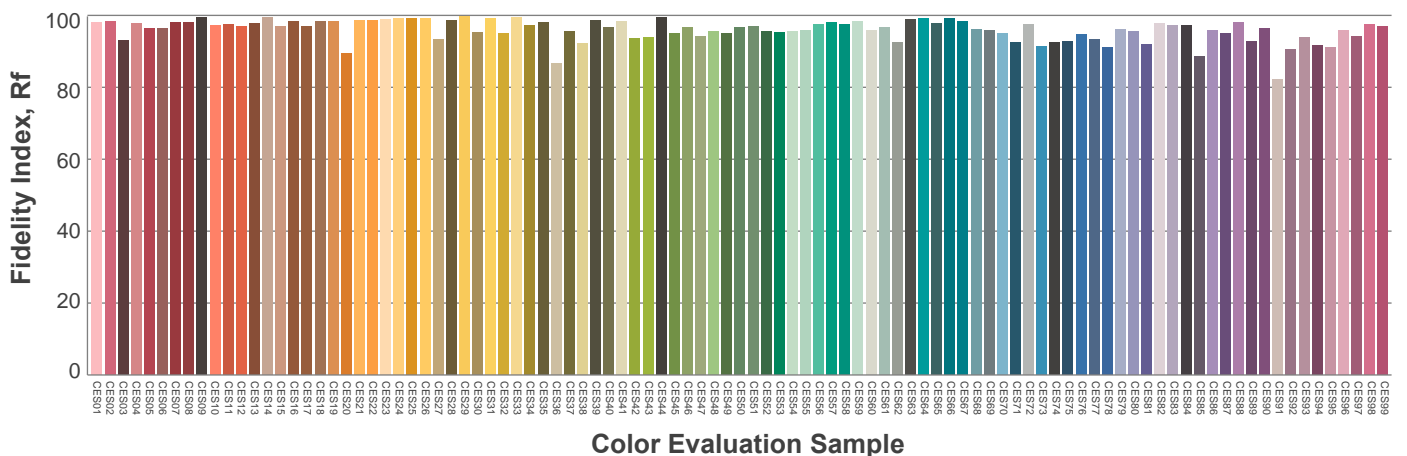
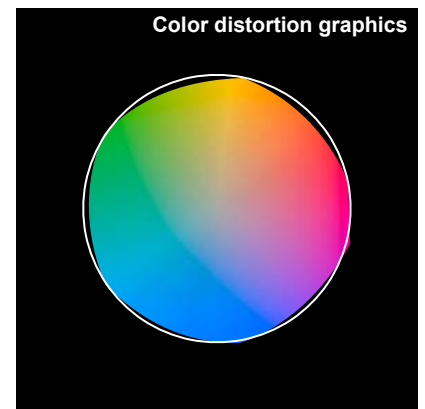
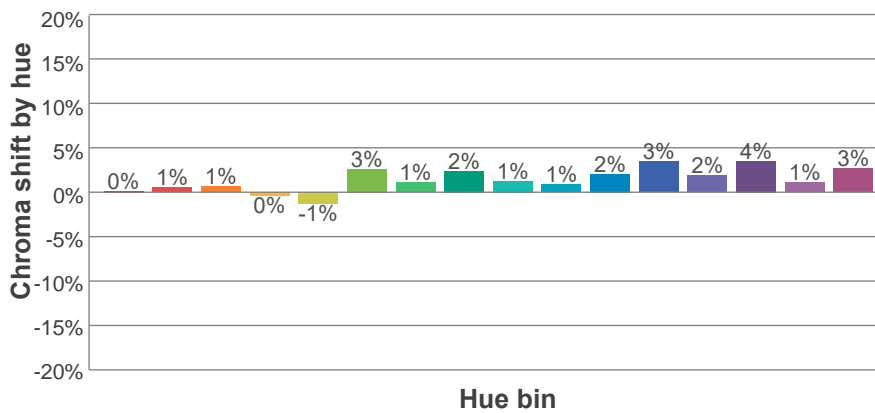
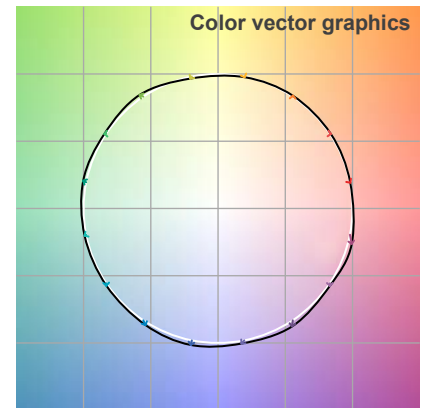
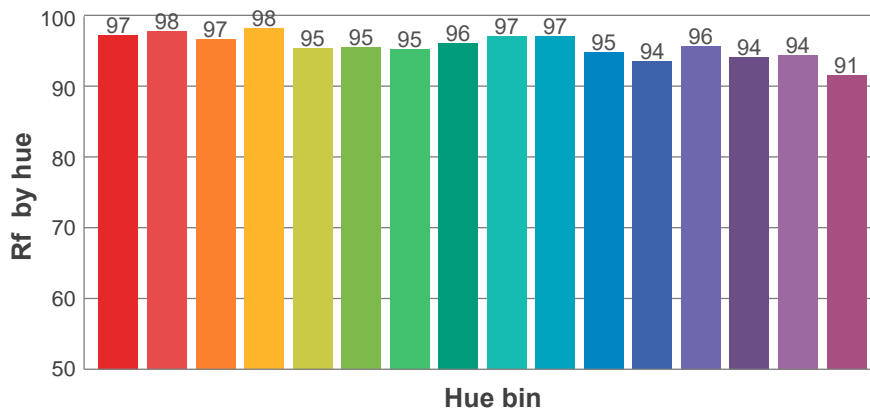
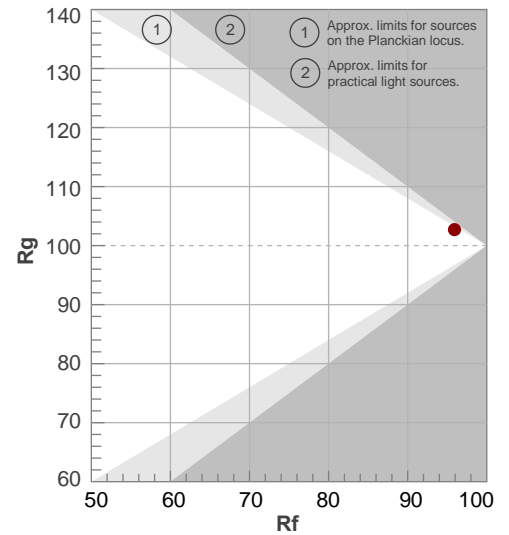
Rf 95.9

Fidelity index Rf

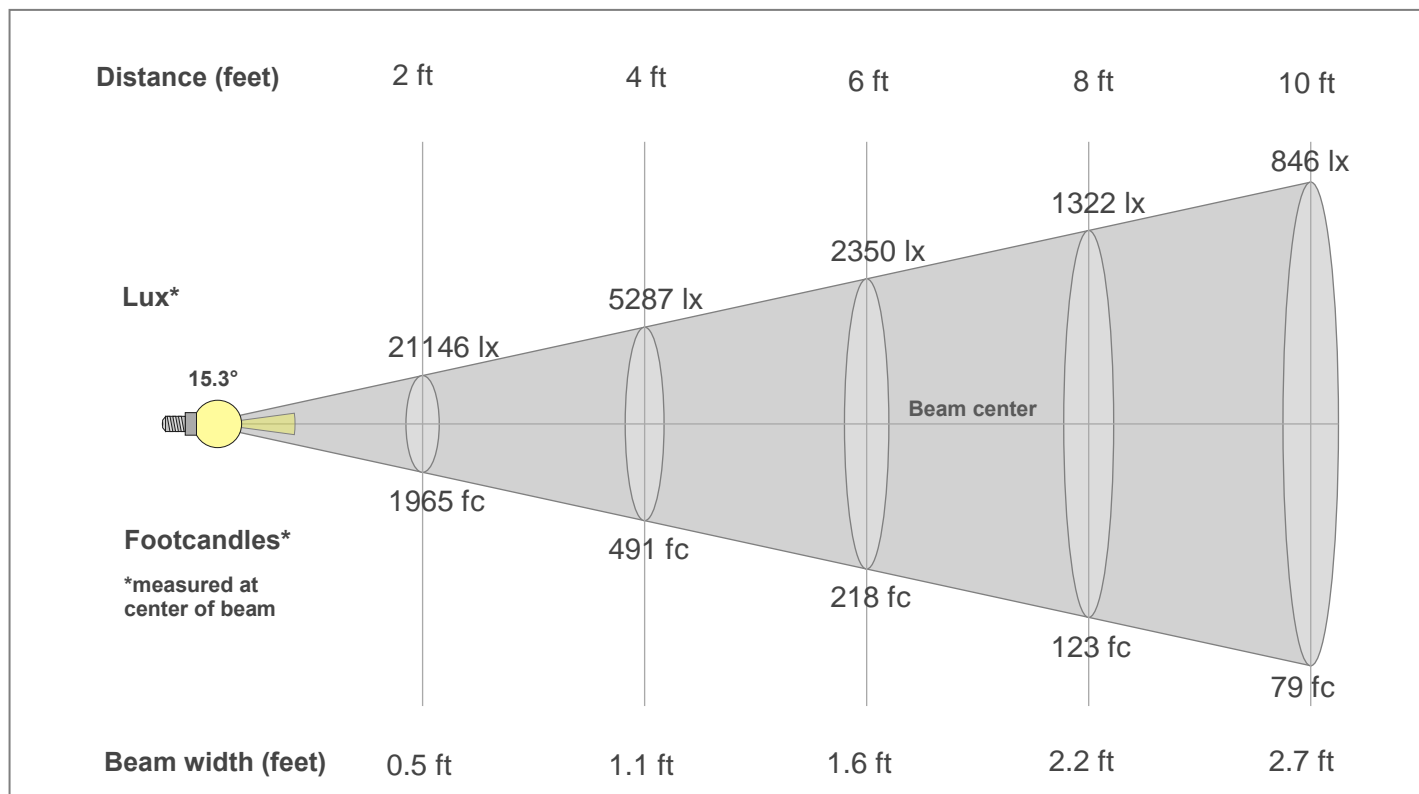
Rg 102.7

Gamut index Rg

Hue Bin	R _f	Shifts (%)	
		Chroma	Hue
1	97	0%	0%
2	98	1%	-1%
3	97	1%	0%
4	98	0%	0%
5	95	-1%	1%
6	95	3%	2%
7	95	1%	1%
8	96	2%	-1%
9	97	1%	0%
10	97	1%	2%
11	95	2%	3%
12	94	3%	0%
13	96	2%	-2%
14	94	4%	-3%
15	94	1%	-2%
16	91	3%	-6%



Beam Details



Beam Intensities from 1-20m

1m	2m	3m	4m	5m	6m	7m	8m	9m	10m	11m	12m	13m	14m	15m	16m	17m	18m	19m	20m
3.3ft	6.6ft	9.8ft	13.1ft	16.4ft	19.7ft	23ft	26.2ft	29.5ft	32.8ft	36.1ft	39.4ft	42.7ft	45.9ft	49.2ft	52.5ft	55.8ft	59.1ft	62.3ft	65.6ft
7858lx	1965lx	873lx	491lx	314lx	218lx	160lx	123lx	97lx	79lx	65lx	55lx	46lx	40lx	35lx	31lx	27lx	24lx	22lx	20lx
730fc	182.5fc	81.1fc	45.6fc	29.2fc	20.3fc	14.9fc	11.4fc	9fc	7.3fc	6fc	5.1fc	4.3fc	3.7fc	3.2fc	2.9fc	2.5fc	2.3fc	2fc	1.8fc

Intensities in 0° c-plane

0°	1°	2°	3°	4°	5°	6°	7°	8°	9°	10°	11°	12°	13°	14°	15°	16°	17°	18°	19°
7858	7763	7465	6997	6406	5738	5043	4342	3691	3109	2589	2147	1775	1466	1209	995	823	683	569	478
100%	99%	95%	89%	82%	73%	64%	55%	47%	40%	33%	27%	23%	19%	15%	13%	10%	9%	7%	6%

Intensities in 90° c-plane

0°	1°	2°	3°	4°	5°	6°	7°	8°	9°	10°	11°	12°	13°	14°	15°	16°	17°	18°	19°
7858	7755	7463	7010	6440	5776	5077	4383	3729	3137	2620	2182	1810	1492	1232	1020	844	701	588	499
100%	99%	95%	89%	82%	74%	65%	56%	47%	40%	33%	28%	23%	19%	16%	13%	11%	9%	7%	6%

Intensities in 180° c-plane

0°	1°	2°	3°	4°	5°	6°	7°	8°	9°	10°	11°	12°	13°	14°	15°	16°	17°	18°	19°
7858	7763	7465	6997	6406	5738	5043	4342	3691	3109	2589	2147	1775	1466	1209	995	823	683	569	478
100%	99%	95%	89%	82%	73%	64%	55%	47%	40%	33%	27%	23%	19%	15%	13%	10%	9%	7%	6%

Intensities in 270° c-plane

0°	1°	2°	3°	4°	5°	6°	7°	8°	9°	10°	11°	12°	13°	14°	15°	16°	17°	18°	19°
7858	7755	7463	7010	6440	5776	5077	4383	3729	3137	2620	2182	1810	1492	1232	1020	844	701	588	499
100%	99%	95%	89%	82%	74%	65%	56%	47%	40%	33%	28%	23%	19%	16%	13%	11%	9%	7%	6%

Beam angle 50%	Field angle 10%	Cut-off angle 2.5%	Intensity ratio in 120°	Intensity ratio in 90°
15.3°	32.6°	50.4°	99.4%	99.0%