

## Photometric / Colorimetric / Electric Report

Fixture Model:

**805-J5-HI-3-40-PR1-8.5-350-FR-P-1-WH-WW-8-20d**

Trim Model:

**FR-P-1-WH-WW-8**

Date:

**1/13/2025**



Light efficiency:

**41 Lumen/Watt**

Light quality:

**CRI: 97.0**

Color temperature:

**3008 K**

CIE 1931:

**x: 0.435  
y: 0.401**

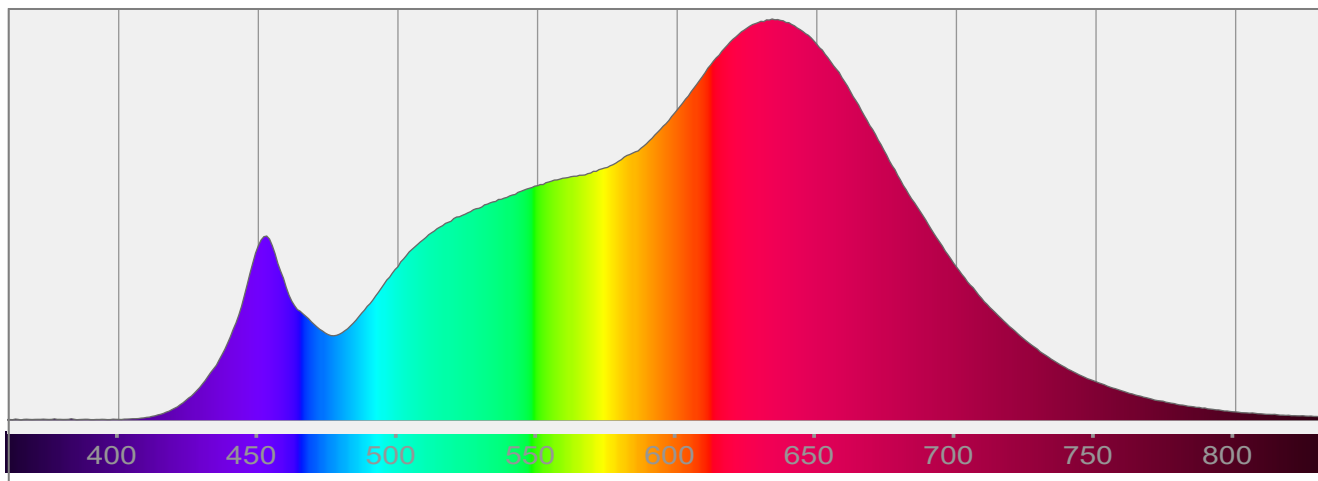
**Output: 608 lm**

**Peak: 448 cd**

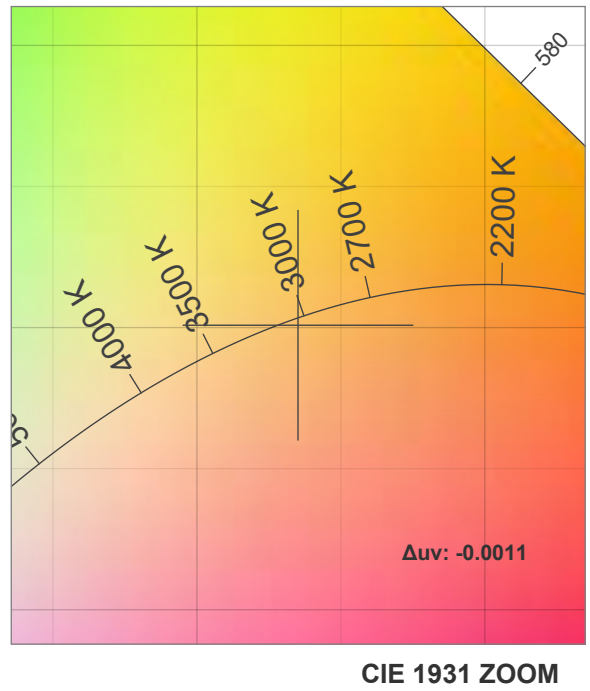
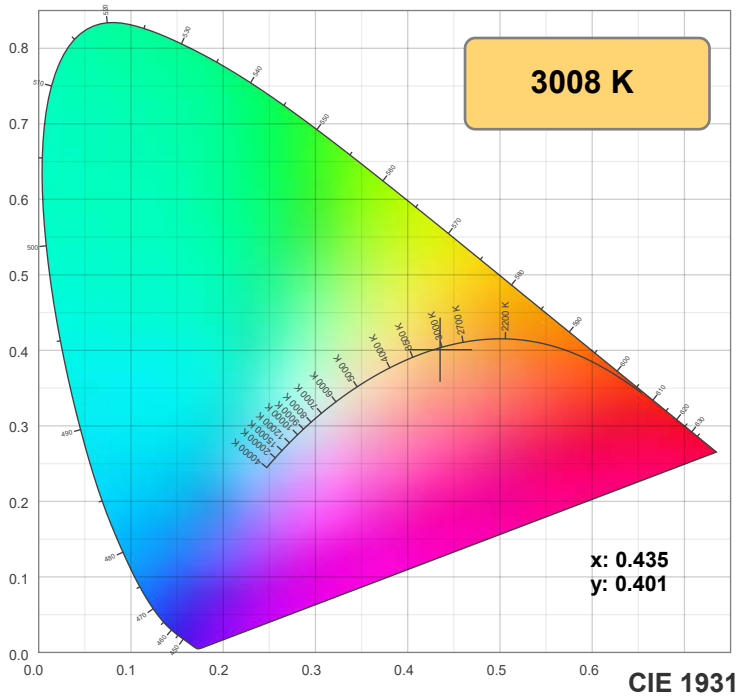
**Power: 14.7 W**

**PF: 0.99**

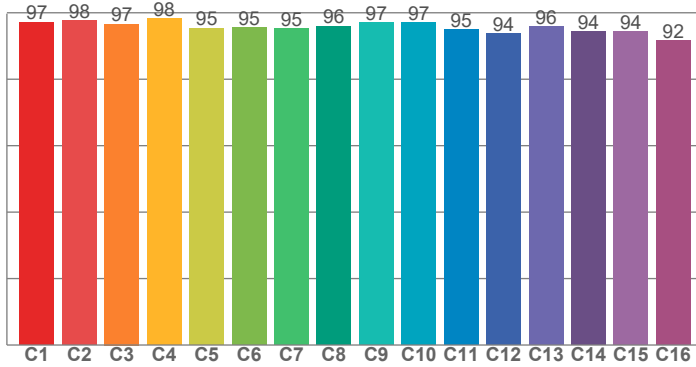
Spectra:



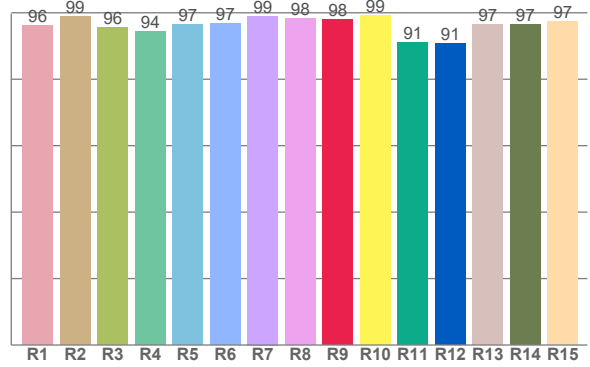
## Color Details



**TM-30: 95.9**



**CRI: 97.0 (R1-R8)**



**CRI R Values:**

R1	R2	R3	R4	R5	R6	R7	R8	R9	R10	R11	R12	R13	R14	R15
96.2	99.0	95.7	94.5	96.6	96.9	99.0	98.4	97.9	99.3	91.1	90.7	96.6	96.5	97.4

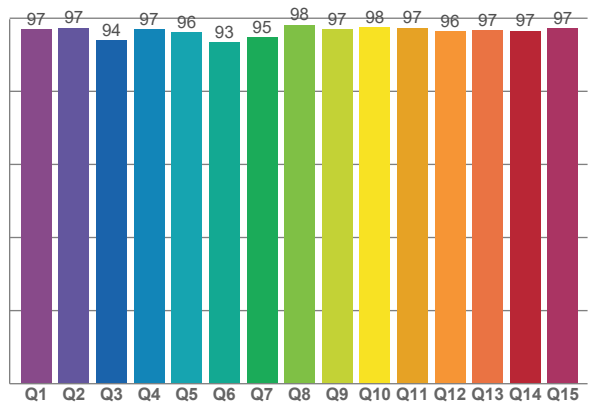
**TM30 C Values:**

C1	C2	C3	C4	C5	C6	C7	C8	C9	C10	C11	C12	C13	C14	C15	C16
97.2	97.6	96.6	98.2	95.4	95.5	95.2	96.0	96.9	97.1	94.9	93.6	95.9	94.3	94.5	91.6

**CQS Q values:**

Q1	Q2	Q3	Q4	Q5	Q6	Q7	Q8	Q9	Q10	Q11	Q12	Q13	Q14	Q15
96.9	97.4	94.0	97.0	96.1	93.5	94.8	98.2	97.0	97.5	97.4	96.4	96.6	96.6	97.2

**CQS: 96.1**



**Color Parameters:**

CCT	CRI	CRI R9	TM30 Rf	TM30 Rg	CQS	x	y	u	v	$\Delta uv$
3008 K	97.0	97.9	95.9	102.7	96.1	0.435	0.401	0.251	0.347	-0.0011

# TM-30 Details

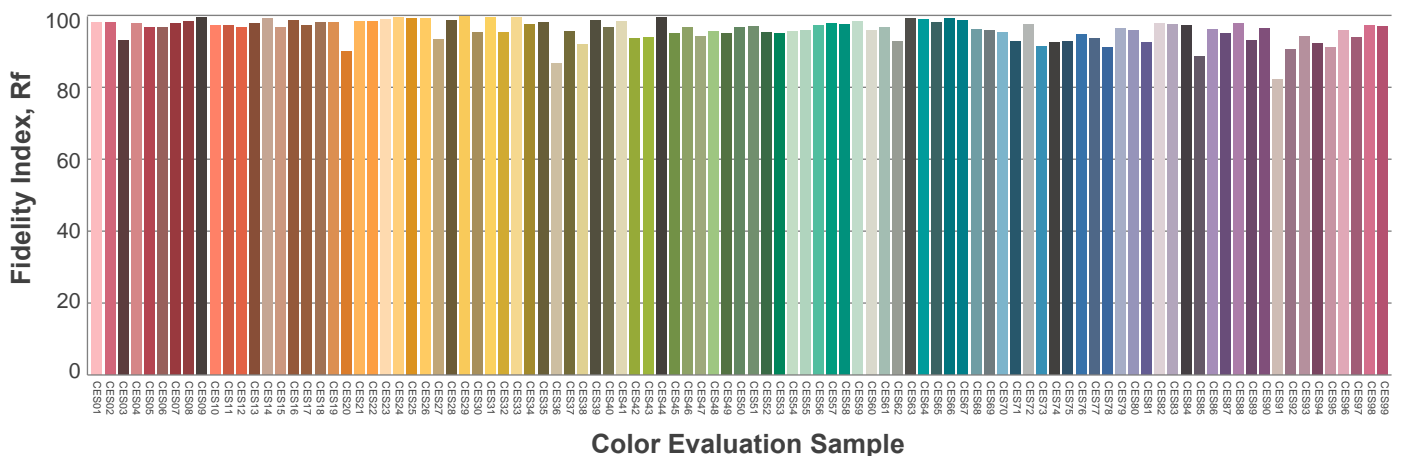
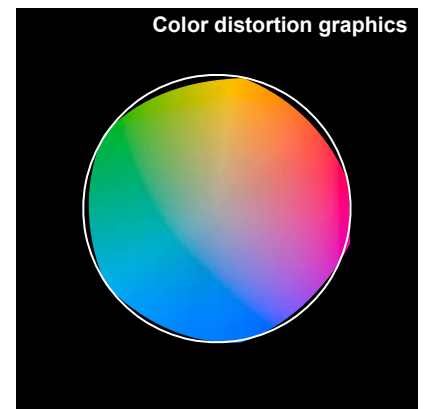
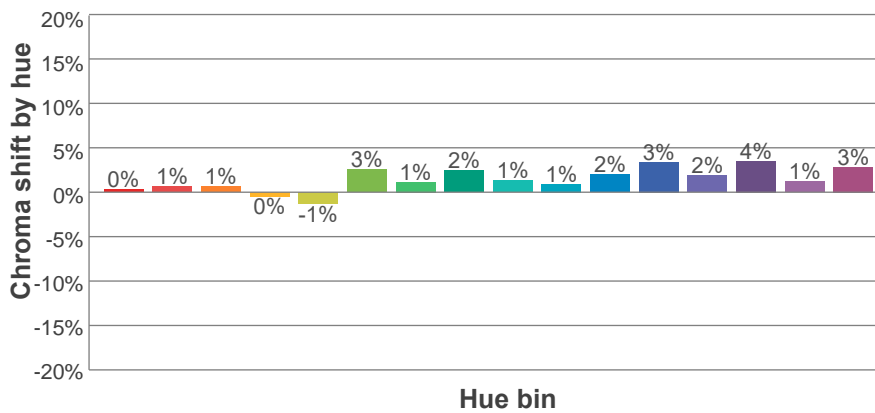
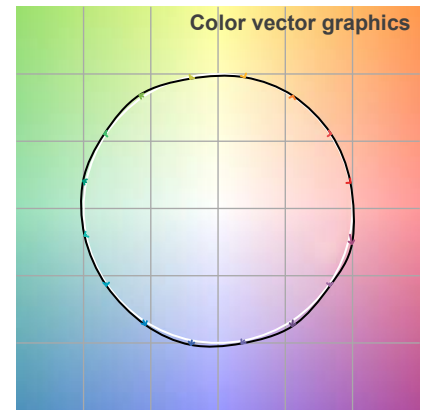
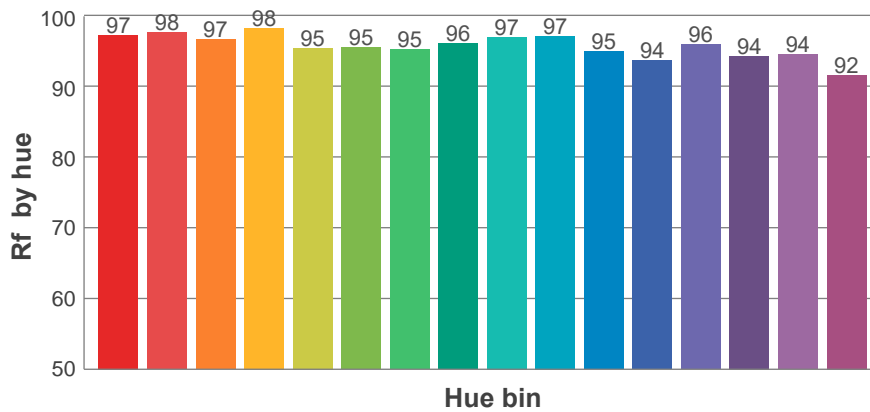
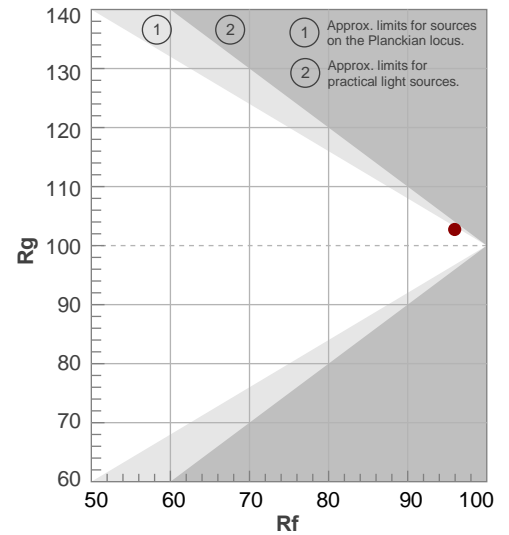
**Rf 95.9**

Fidelity index Rf

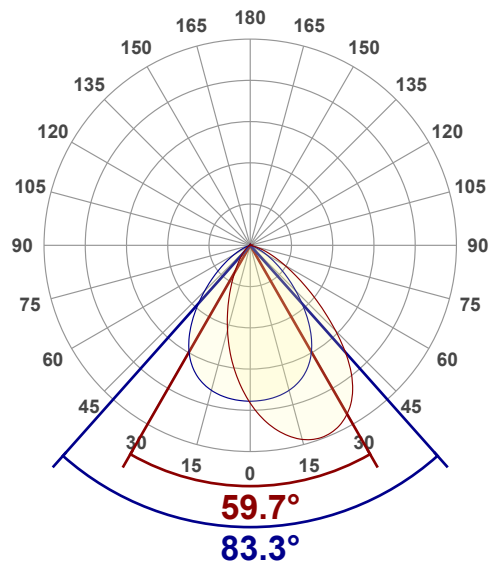
**Rg 102.7**

Gamut index Rg

Hue Bin	R <sub>f</sub>	Shifts (%)	
		Chroma	Hue
1	97	0%	0%
2	98	1%	-1%
3	97	1%	0%
4	98	0%	0%
5	95	-1%	1%
6	95	3%	2%
7	95	1%	1%
8	96	2%	-1%
9	97	1%	0%
10	97	1%	2%
11	95	2%	3%
12	94	3%	0%
13	96	2%	-2%
14	94	4%	-3%
15	94	1%	-2%
16	92	3%	-6%



## Angular Distribution Through 0° and 90° Planes



**Beam Angle: 83.3°W x 59.7°L**

## Beam Details

