

Photometric / Colorimetric / Electric Report

Fixture Model:

805-J5-HI-3-25-PR1-8.5-350-FR-LG-P-1-WH-NL

Trim Model:

FR-LG-P-1-WH/NL

Date:

1/10/2025



Light efficiency:

58 Lumen/Watt

Light quality:

CRI: 97.2

Color temperature:

3013 K

CIE 1931:

**x: 0.435
y: 0.400**

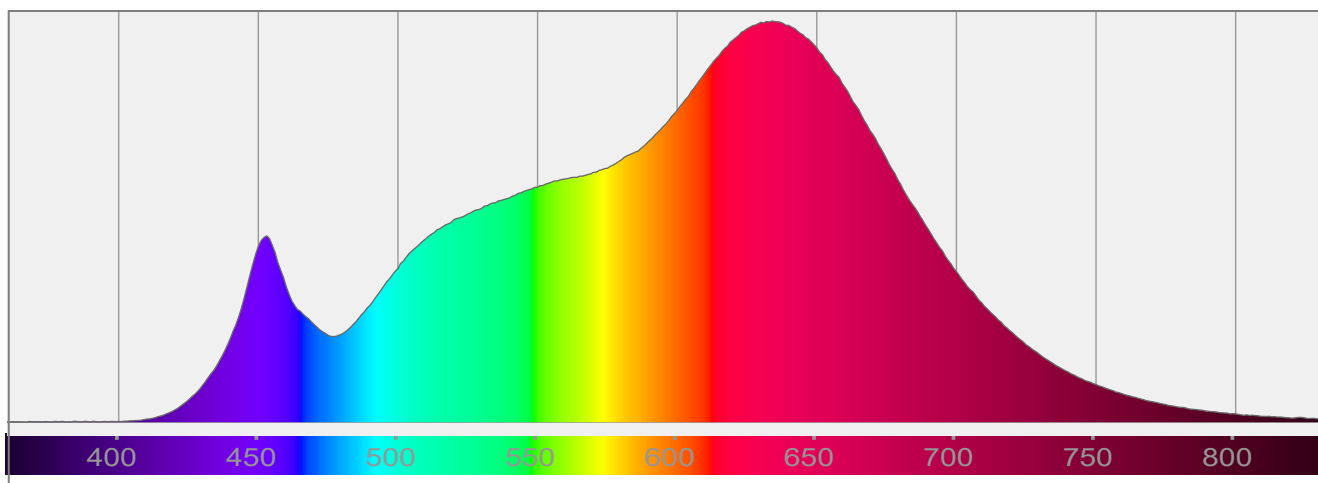
Output: 852 lm

Peak: 3946 cd

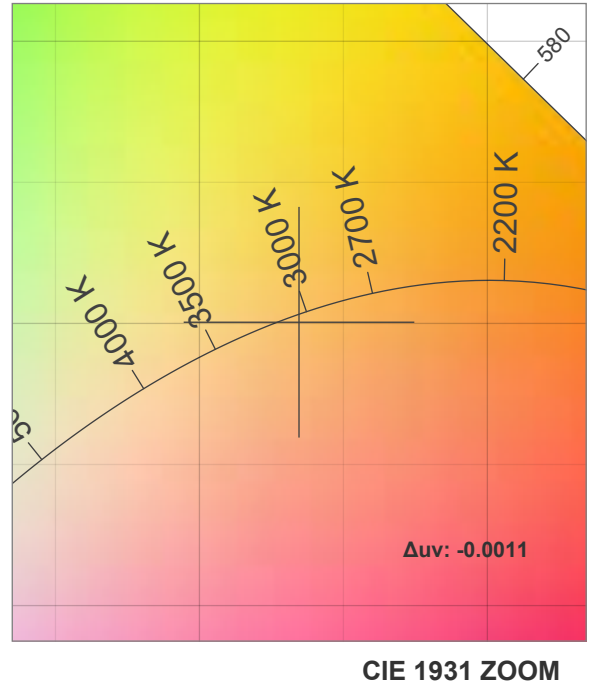
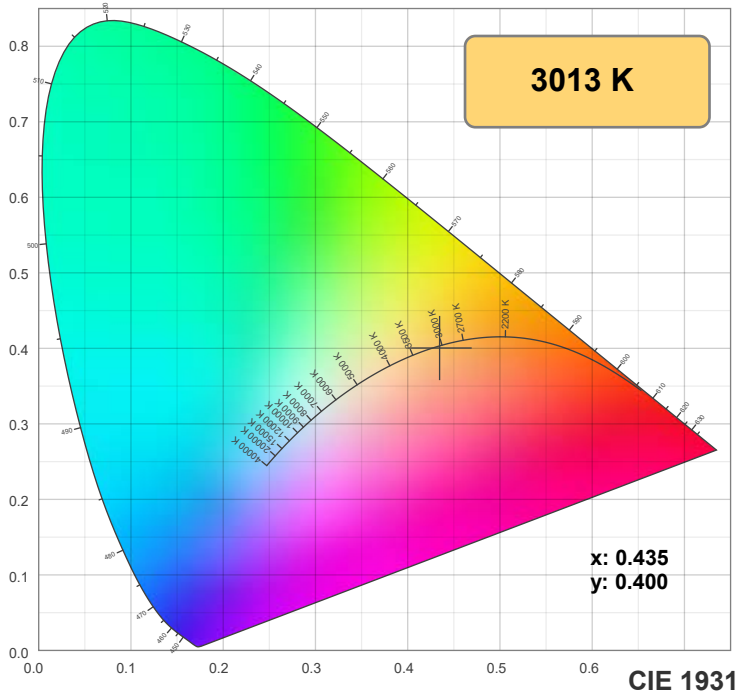
Power: 14.7 W

PF: 0.99

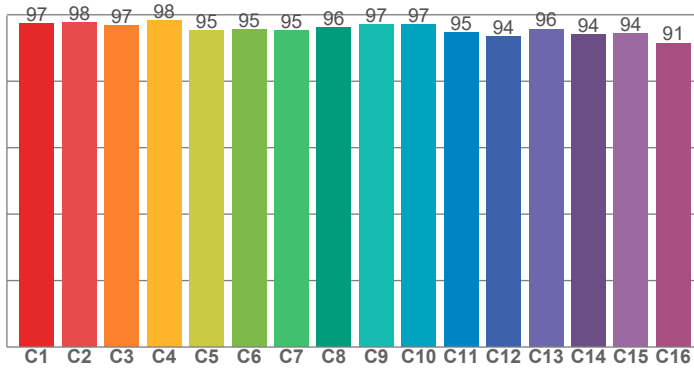
Spectra:



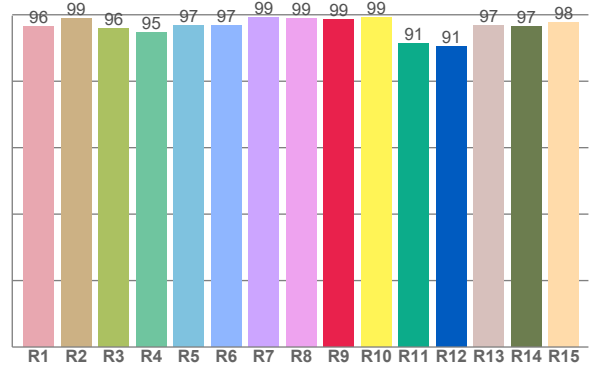
Color Details



TM-30: 95.9



CRI: 97.2 (R1-R8)



CRI R Values:

R1	R2	R3	R4	R5	R6	R7	R8	R9	R10	R11	R12	R13	R14	R15
96.4	99.0	95.9	94.8	96.8	96.8	99.1	98.9	98.6	99.3	91.4	90.5	96.7	96.6	97.2

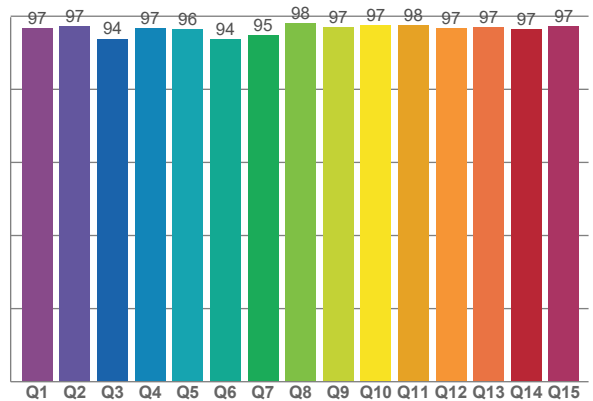
TM30 C Values:

C1	C2	C3	C4	C5	C6	C7	C8	C9	C10	C11	C12	C13	C14	C15	C16
97.2	97.7	96.7	98.2	95.4	95.5	95.2	96.1	97.0	96.9	94.8	93.5	95.7	94.1	94.4	91.5

CQS Q values:

Q1	Q2	Q3	Q4	Q5	Q6	Q7	Q8	Q9	Q10	Q11	Q12	Q13	Q14	Q15
96.8	97.3	93.8	96.8	96.3	93.6	94.7	98.1	97.1	97.4	97.6	96.7	96.9	96.5	97.2

CQS: 96.1



Color Parameters:

CCT	CRI	CRI R9	TM30 Rf	TM30 Rg	CQS	x	y	u	v	Δuv
3013 K	97.2	98.6	95.9	102.7	96.1	0.435	0.400	0.251	0.346	-0.0011

TM-30 Details

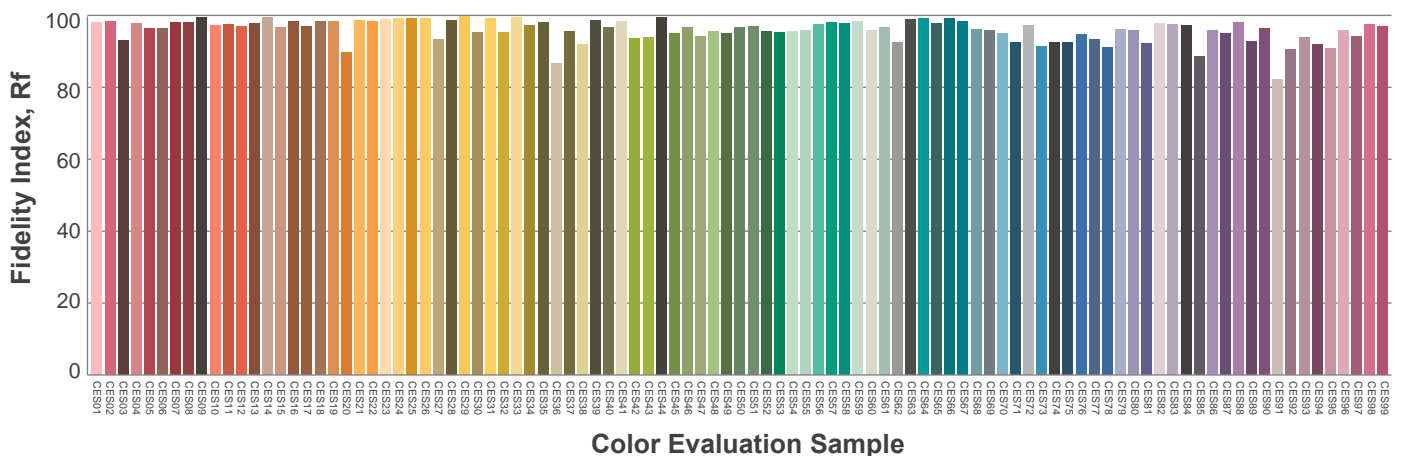
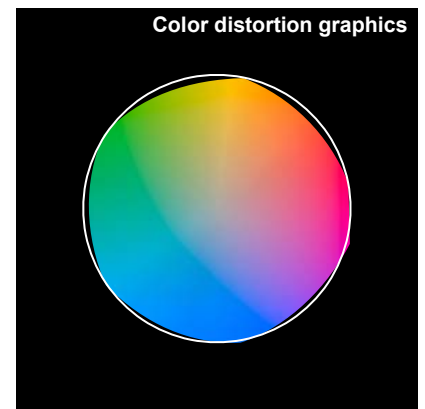
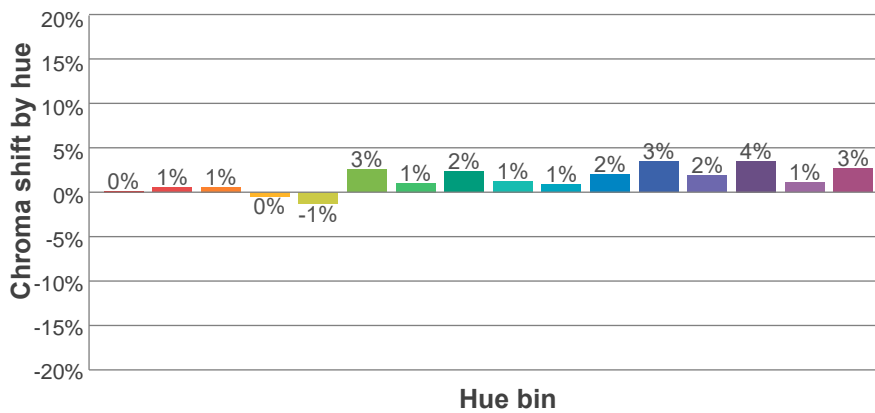
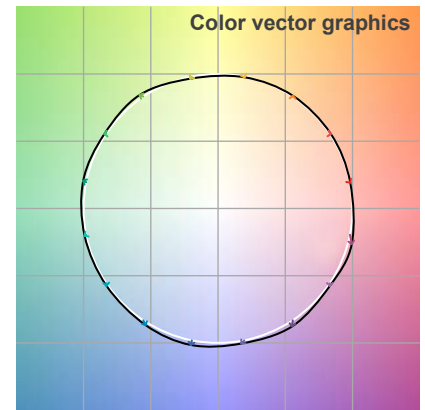
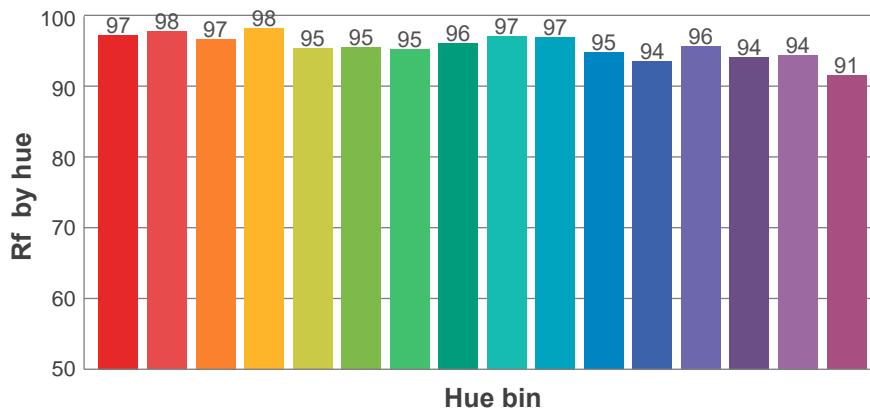
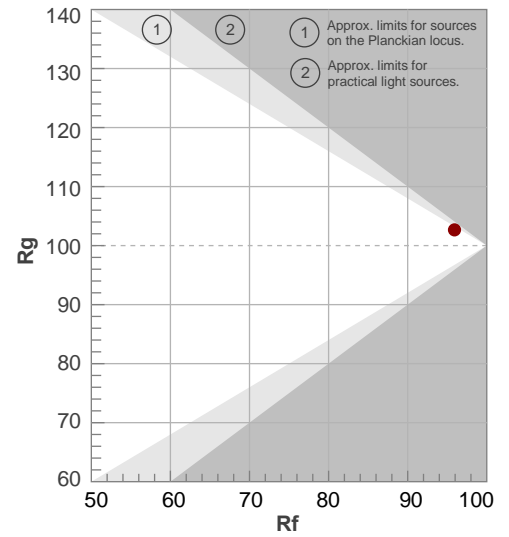
Rf 95.9

Fidelity index Rf

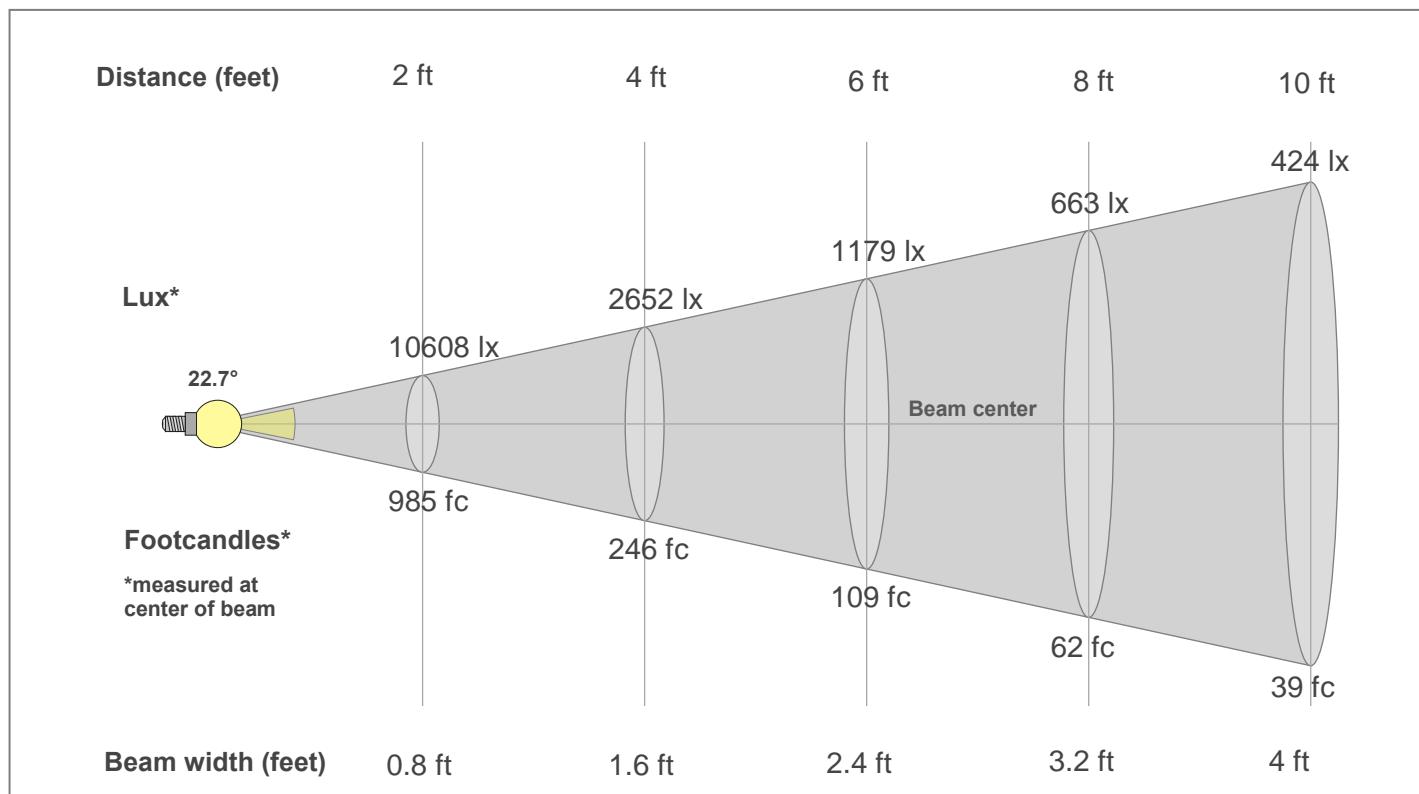
Rg 102.7

Gamut index Rg

Hue Bin	R _f	Shifts (%)	
		Chroma	Hue
1	97	0%	0%
2	98	1%	-1%
3	97	1%	0%
4	98	0%	0%
5	95	-1%	1%
6	95	3%	2%
7	95	1%	1%
8	96	2%	-1%
9	97	1%	1%
10	97	1%	2%
11	95	2%	3%
12	94	3%	0%
13	96	2%	-2%
14	94	4%	-3%
15	94	1%	-2%
16	91	3%	-6%



Beam Details



Beam Intensities from 1-20m

1m	2m	3m	4m	5m	6m	7m	8m	9m	10m	11m	12m	13m	14m	15m	16m	17m	18m	19m	20m
3.3ft	6.6ft	9.8ft	13.1ft	16.4ft	19.7ft	23ft	26.2ft	29.5ft	32.8ft	36.1ft	39.4ft	42.7ft	45.9ft	49.2ft	52.5ft	55.8ft	59.1ft	62.3ft	65.6ft
3942lx	985lx	438lx	246lx	158lx	109lx	80lx	62lx	49lx	39lx	33lx	27lx	23lx	20lx	18lx	15lx	14lx	12lx	11lx	10lx
366.2fc	91.6fc	40.7fc	22.9fc	14.6fc	10.2fc	7.5fc	5.7fc	4.5fc	3.7fc	3fc	2.5fc	2.2fc	1.9fc	1.6fc	1.4fc	1.3fc	1.1fc	1fc	0.9fc

Intensities in 0° c-plane

0°	2°	4°	6°	8°	10°	12°	14°	16°	18°	20°	22°	24°	26°	28°	30°	32°	34°	36°	38°
3942	3854	3602	3218	2760	2277	1817	1409	1069	791	571	409	299	229	179	142	114	92	76	64
100%	98%	91%	82%	70%	58%	46%	36%	27%	20%	14%	10%	8%	6%	5%	4%	3%	2%	2%	2%

Intensities in 90° c-plane

0°	2°	4°	6°	8°	10°	12°	14°	16°	18°	20°	22°	24°	26°	28°	30°	32°	34°	36°	38°
3942	3849	3600	3223	2765	2286	1826	1415	1074	793	575	413	302	232	182	146	117	95	79	66
100%	98%	91%	82%	70%	58%	46%	36%	27%	20%	15%	10%	8%	6%	5%	4%	3%	2%	2%	2%

Intensities in 180° c-plane

0°	2°	4°	6°	8°	10°	12°	14°	16°	18°	20°	22°	24°	26°	28°	30°	32°	34°	36°	38°
3942	3854	3602	3218	2760	2277	1817	1409	1069	791	571	409	299	229	179	142	114	92	76	64
100%	98%	91%	82%	70%	58%	46%	36%	27%	20%	14%	10%	8%	6%	5%	4%	3%	2%	2%	2%

Intensities in 270° c-plane

0°	2°	4°	6°	8°	10°	12°	14°	16°	18°	20°	22°	24°	26°	28°	30°	32°	34°	36°	38°
3942	3849	3600	3223	2765	2286	1826	1415	1074	793	575	413	302	232	182	146	117	95	79	66
100%	98%	91%	82%	70%	58%	46%	36%	27%	20%	15%	10%	8%	6%	5%	4%	3%	2%	2%	2%

Beam angle 50%	Field angle 10%	Cut-off angle 2.5%	Intensity ratio in 120°	Intensity ratio in 90°
22.7°	44.5°	67°	99.3%	97.6%