

Photometric / Colorimetric / Electric Report

Fixture Model:

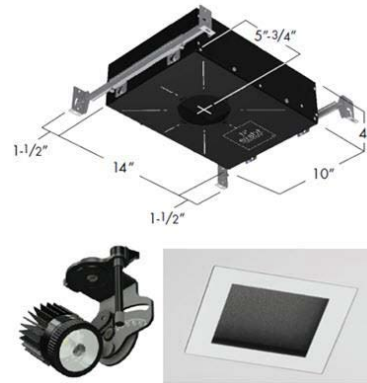
804S-J2S-WD-15-DIM1-8-350-FS-LG-P-1-WH-NL

Trim Model:

FS-LG-P-1-WH-NL

Date:

4/8/2022



Light efficiency:

58 Lumen/Watt

Light quality:

CRI: 97.0

Color temperature:

3115 K

CIE 1931:

**x: 0.426
y: 0.395**

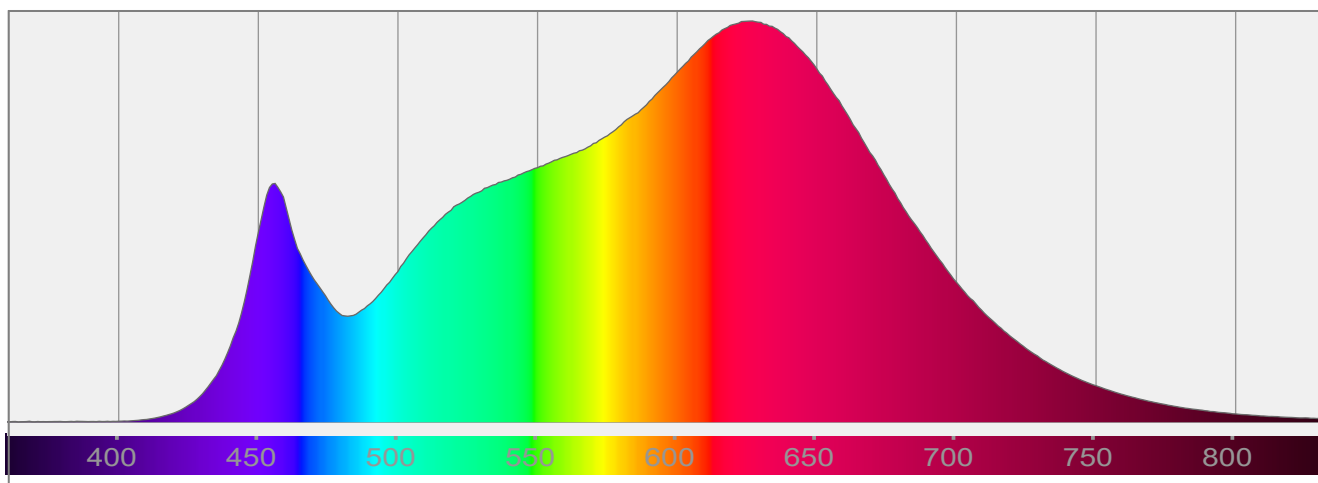
Output: 837 lm

Peak: 3448 cd

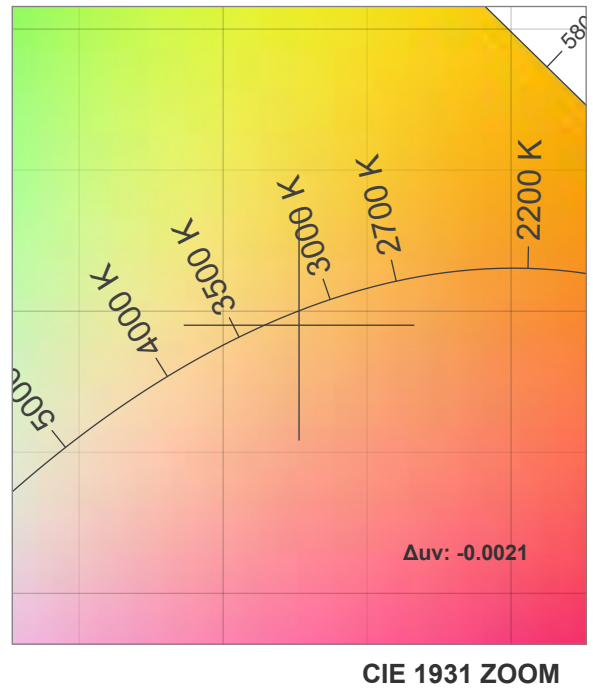
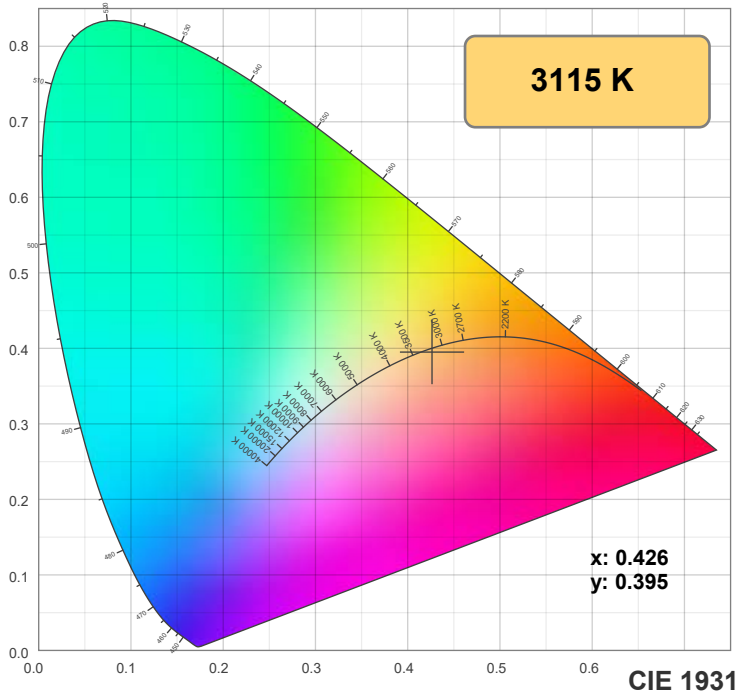
Power: 14.5 W

PF: 0.99

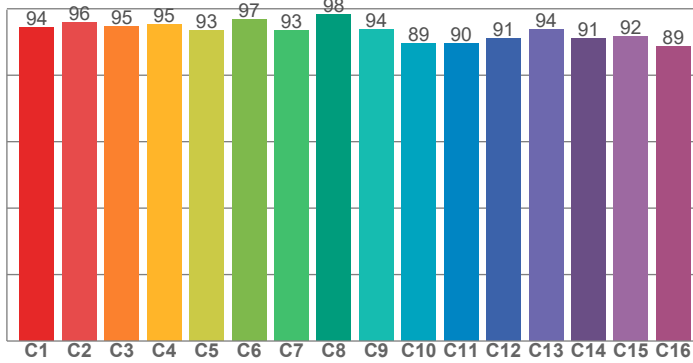
Spectra:



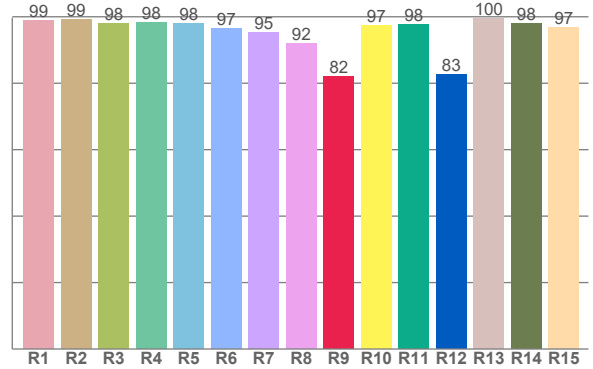
Color Details



TM-30: 93.3



CRI: 97.0 (R1-R8)



CRI R Values:

R1	R2	R3	R4	R5	R6	R7	R8	R9	R10	R11	R12	R13	R14	R15
98.8	99.3	97.9	98.3	98.1	96.5	95.3	91.9	81.9	97.3	97.6	82.6	99.6	97.9	96.7

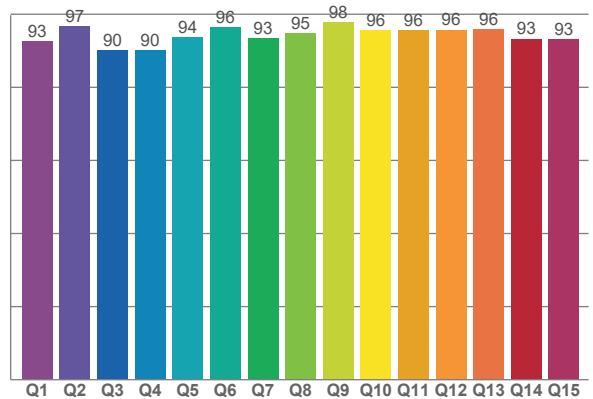
TM30 C Values:

C1	C2	C3	C4	C5	C6	C7	C8	C9	C10	C11	C12	C13	C14	C15	C16
94.3	95.9	94.7	95.3	93.4	96.7	93.5	98.3	93.7	89.4	89.6	91.1	93.7	90.9	91.6	88.7

CQS Q values:

Q1	Q2	Q3	Q4	Q5	Q6	Q7	Q8	Q9	Q10	Q11	Q12	Q13	Q14	Q15
92.6	96.7	90.1	90.1	93.8	96.4	93.4	94.9	97.8	95.6	95.6	95.7	95.8	93.3	93.1

CQS: 93.8



Color Parameters:

CCT	CRI	CRI R9	TM30 Rf	TM30 Rg	CQS	x	y	u	v	Δuv
3115 K	97.0	81.9	93.3	100.5	93.8	0.426	0.395	0.248	0.344	-0.0021

TM-30 Details

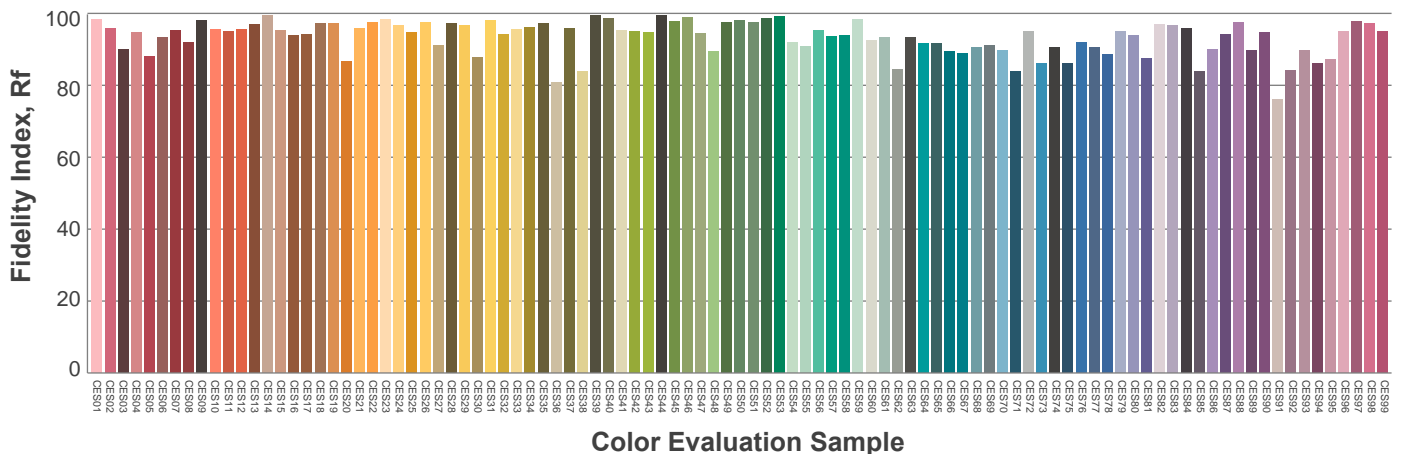
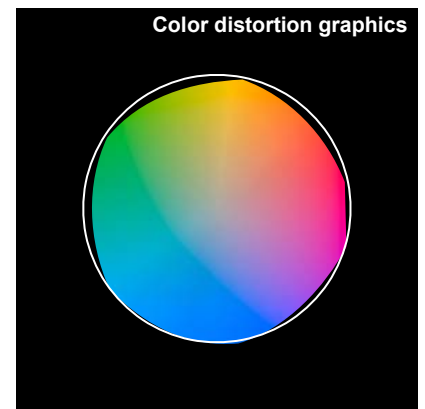
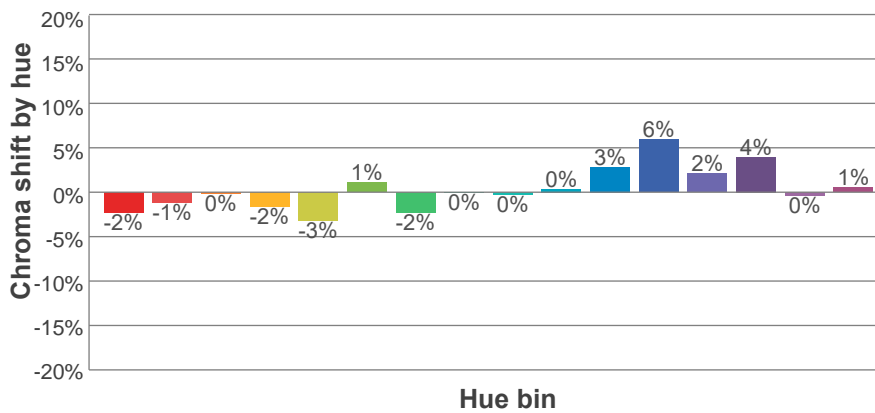
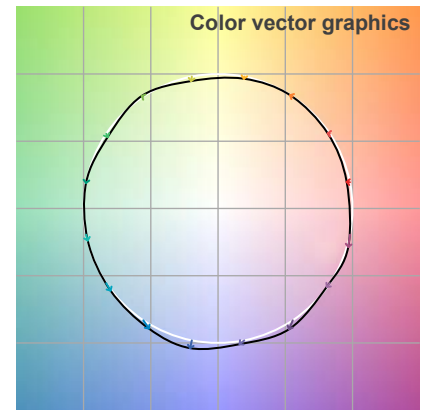
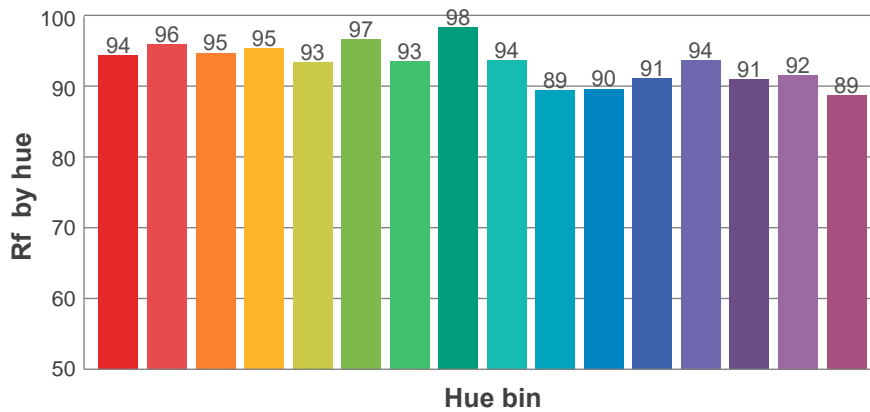
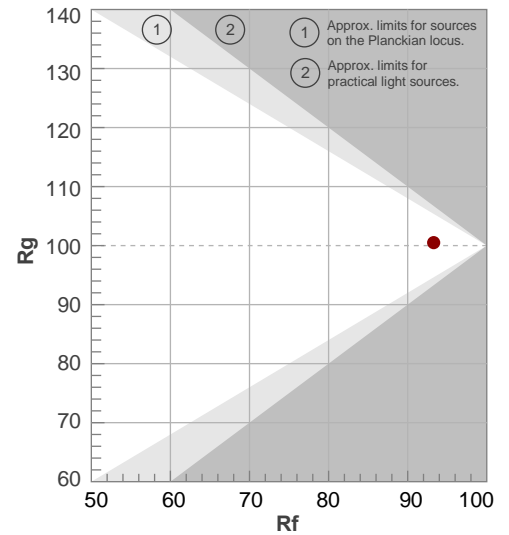
Rf 93.3

Fidelity index Rf

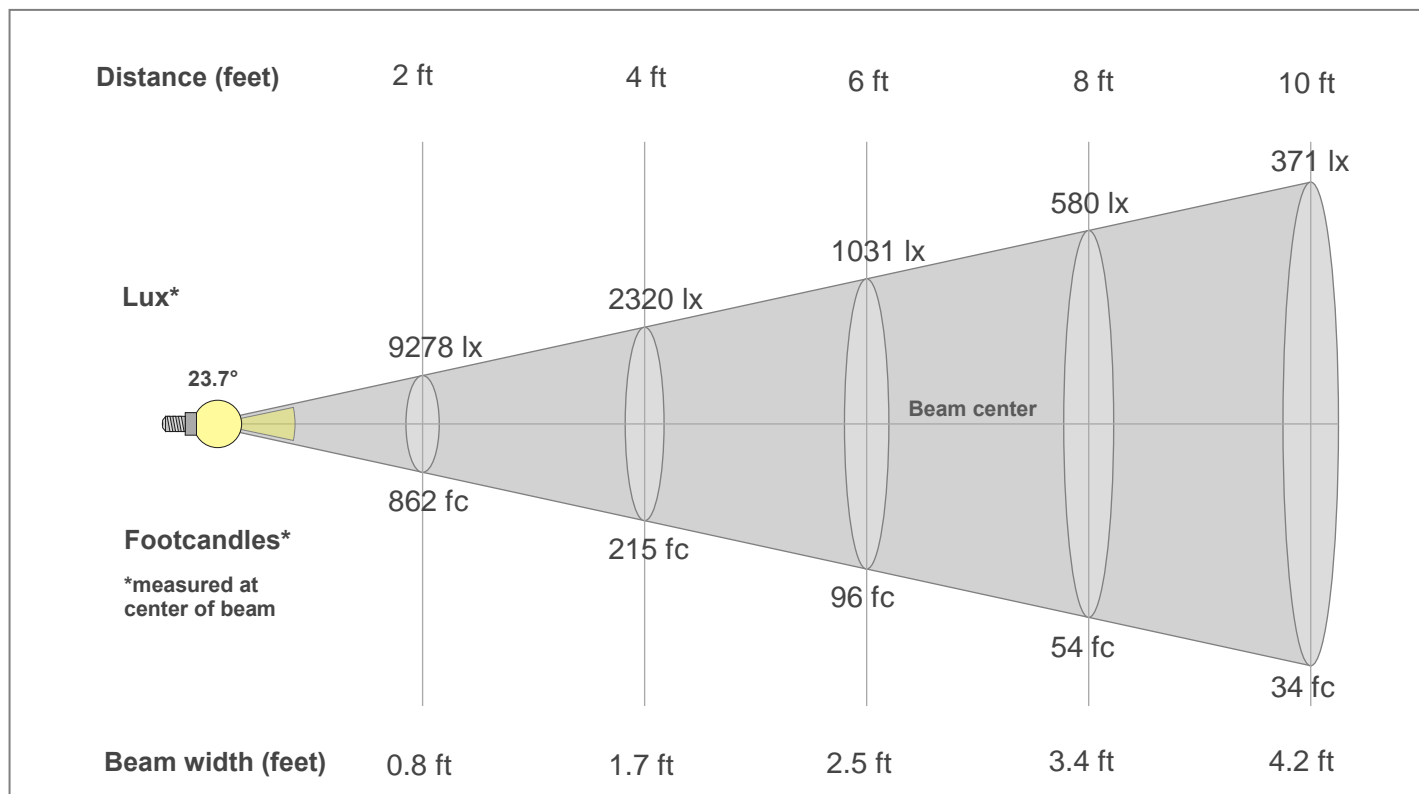
Rg 100.5

Gamut index Rg

Hue Bin	R _f	Shifts (%)	
		Chroma	Hue
1	94	-2%	1%
2	96	-1%	1%
3	95	0%	2%
4	95	-2%	0%
5	93	-3%	1%
6	97	1%	1%
7	93	-2%	1%
8	98	0%	1%
9	94	0%	4%
10	89	0%	6%
11	90	3%	7%
12	91	6%	0%
13	94	2%	-4%
14	91	4%	-6%
15	92	0%	-4%
16	89	1%	-9%



Beam Details



Beam Intensities from 1-20m

1m	2m	3m	4m	5m	6m	7m	8m	9m	10m	11m	12m	13m	14m	15m	16m	17m	18m	19m	20m
3.3ft	6.6ft	9.8ft	13.1ft	16.4ft	19.7ft	23ft	26.2ft	29.5ft	32.8ft	36.1ft	39.4ft	42.7ft	45.9ft	49.2ft	52.5ft	55.8ft	59.1ft	62.3ft	65.6ft
3448lx	862lx	383lx	215lx	138lx	96lx	70lx	54lx	43lx	34lx	28lx	24lx	20lx	18lx	15lx	13lx	12lx	11lx	10lx	9lx
320.3fc	80.1fc	35.6fc	20fc	12.8fc	8.9fc	6.5fc	5fc	4fc	3.2fc	2.6fc	2.2fc	1.9fc	1.6fc	1.4fc	1.3fc	1.1fc	1fc	0.9fc	0.8fc

Intensities in 0° c-plane

0°	2°	4°	6°	8°	10°	12°	14°	16°	18°	20°	22°	24°	26°	28°	30°	32°	34°	36°	38°
3448	3403	3232	2940	2555	2118	1692	1320	1027	802	628	493	387	303	240	191	152	118	87	61
100%	99%	94%	85%	74%	61%	49%	38%	30%	23%	18%	14%	11%	9%	7%	6%	4%	3%	3%	2%

Intensities in 90° c-plane

0°	2°	4°	6°	8°	10°	12°	14°	16°	18°	20°	22°	24°	26°	28°	30°	32°	34°	36°	38°
3448	3403	3232	2940	2555	2118	1692	1320	1027	802	628	493	387	303	240	191	152	118	87	61
100%	99%	94%	85%	74%	61%	49%	38%	30%	23%	18%	14%	11%	9%	7%	6%	4%	3%	3%	2%

Intensities in 180° c-plane

0°	2°	4°	6°	8°	10°	12°	14°	16°	18°	20°	22°	24°	26°	28°	30°	32°	34°	36°	38°
3448	3403	3232	2940	2555	2118	1692	1320	1027	802	628	493	387	303	240	191	152	118	87	61
100%	99%	94%	85%	74%	61%	49%	38%	30%	23%	18%	14%	11%	9%	7%	6%	4%	3%	3%	2%

Intensities in 270° c-plane

0°	2°	4°	6°	8°	10°	12°	14°	16°	18°	20°	22°	24°	26°	28°	30°	32°	34°	36°	38°
3448	3403	3232	2940	2555	2118	1692	1320	1027	802	628	493	387	303	240	191	152	118	87	61
100%	99%	94%	85%	74%	61%	49%	38%	30%	23%	18%	14%	11%	9%	7%	6%	4%	3%	3%	2%

Beam angle 50%	Field angle 10%	Cut-off angle 2.5%	Intensity ratio in 120°	Intensity ratio in 90°
23.7°	49.9°	72.2°	99.6%	99.0%