

Photometric / Colorimetric / Electric Report

Fixture Model:

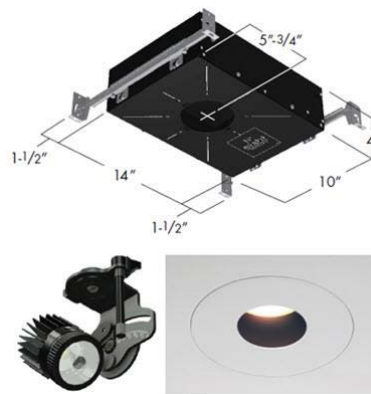
804S-J2S-WD-15-DIM1-8-350-FR-P-1-WH

Trim Model:

FR-P-1-WH

Date:

3/24/2022



Light efficiency:

51 Lumen/Watt

Light quality:

CRI: 97.0

Color temperature:

3110 K

CIE 1931:

x: 0.427
y: 0.396

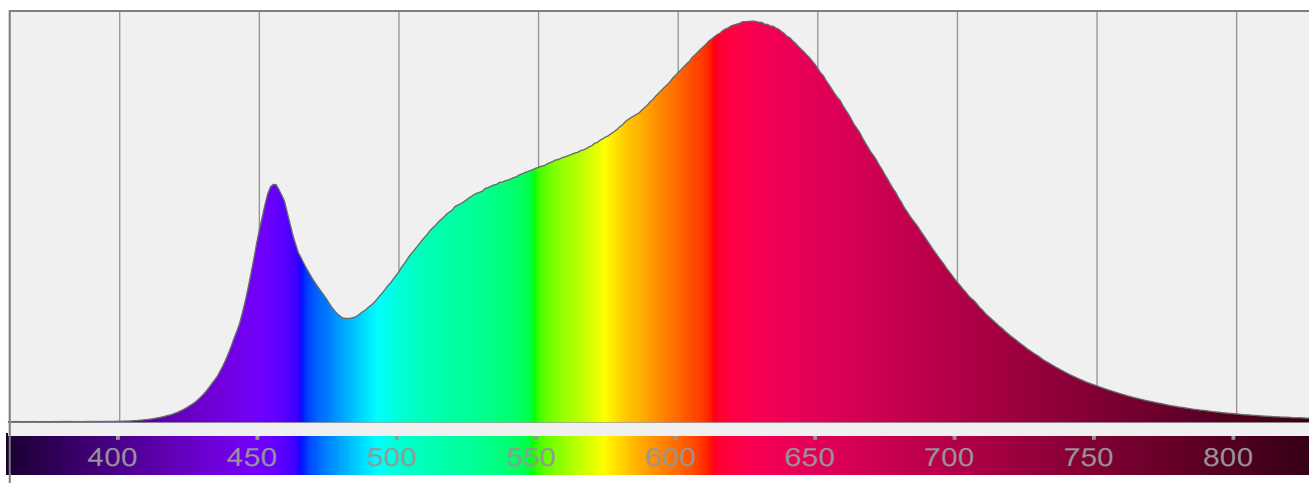
Output: 739 lm

Peak: 3626 cd

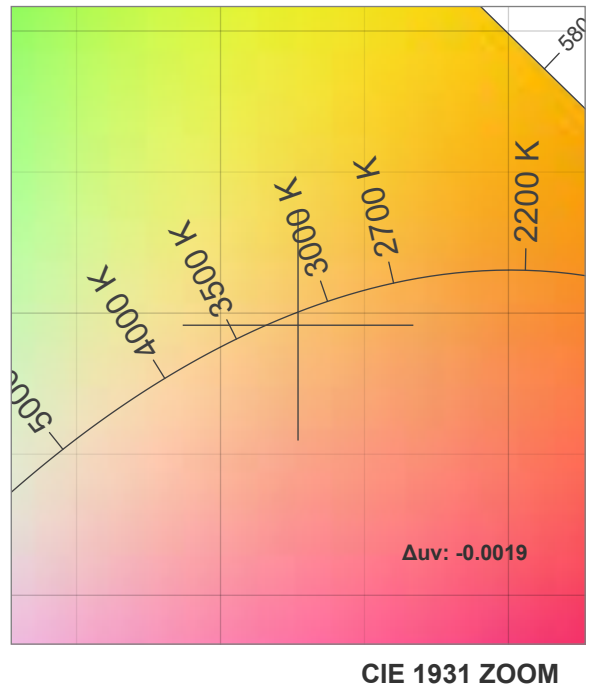
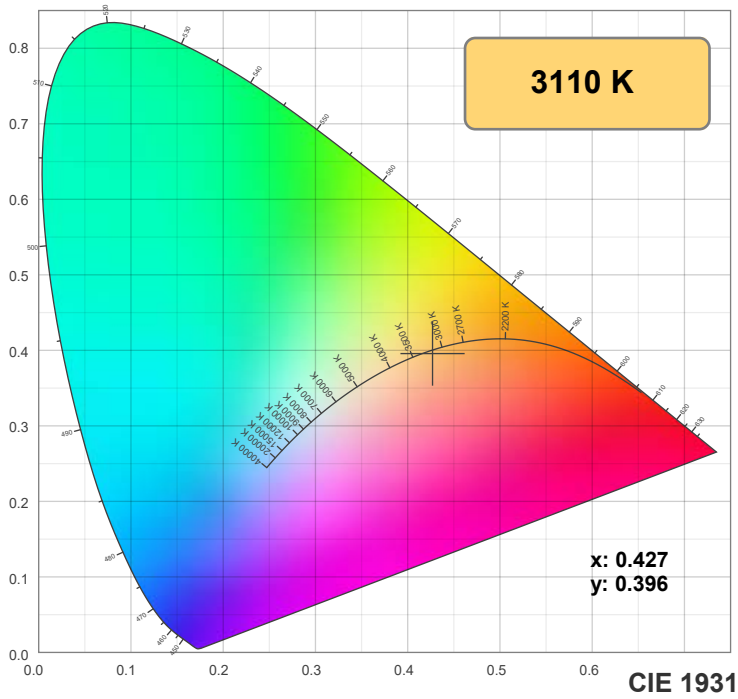
Power: 14.5 W

PF: 1.0

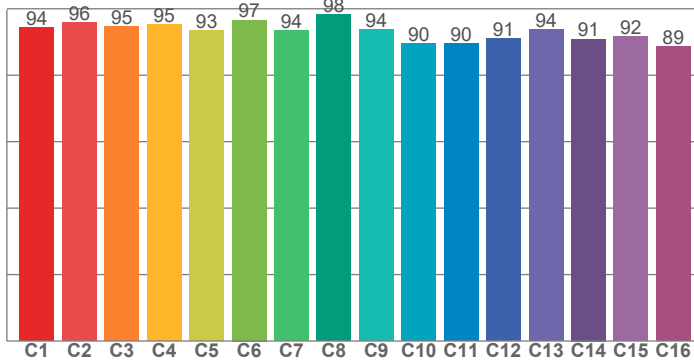
Spectra:



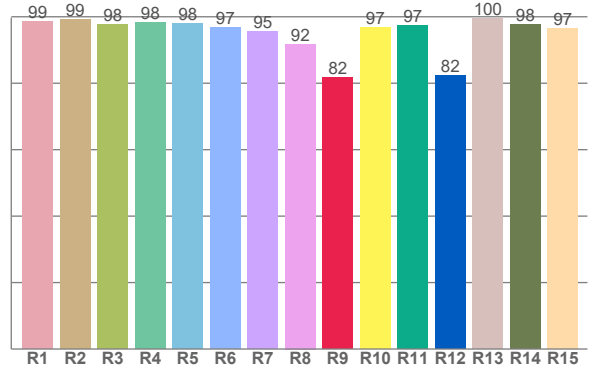
Color Details



TM-30: 93.3



CRI: 97.0 (R1-R8)



CRI R Values:

R1	R2	R3	R4	R5	R6	R7	R8	R9	R10	R11	R12	R13	R14	R15
98.7	99.2	97.7	98.2	98.0	96.7	95.5	91.8	81.6	96.8	97.5	82.4	99.5	97.8	96.5

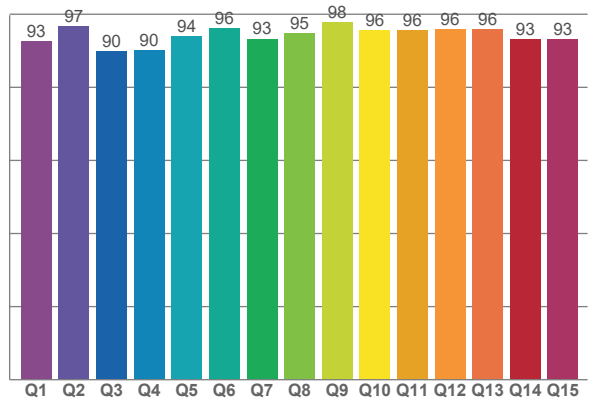
TM30 C Values:

C1	C2	C3	C4	C5	C6	C7	C8	C9	C10	C11	C12	C13	C14	C15	C16
94.4	95.9	94.6	95.4	93.4	96.6	93.5	98.4	93.9	89.5	89.5	91.1	93.8	90.9	91.6	88.6

CQS Q values:

Q1	Q2	Q3	Q4	Q5	Q6	Q7	Q8	Q9	Q10	Q11	Q12	Q13	Q14	Q15
92.6	96.7	89.9	90.1	93.9	96.3	93.3	94.9	97.7	95.5	95.6	95.8	95.9	93.3	93.1

CQS: 93.8



Color Parameters:

CCT	CRI	CRI R9	TM30 Rf	TM30 Rg	CQS	x	y	u	v	Δuv
3110 K	97.0	81.6	93.3	100.6	93.8	0.427	0.396	0.248	0.344	-0.0019

TM-30 Details

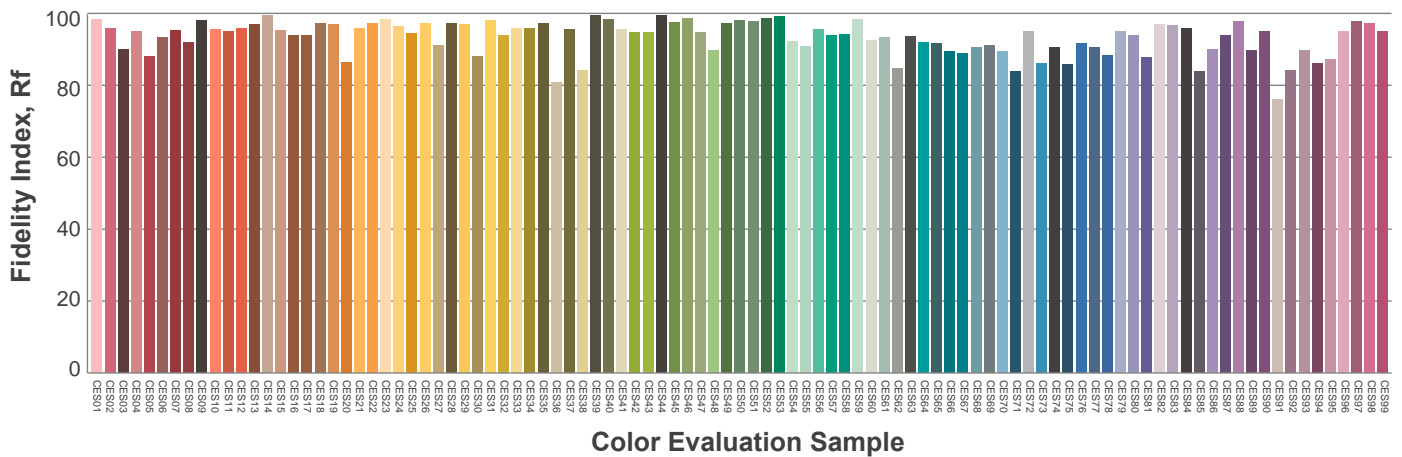
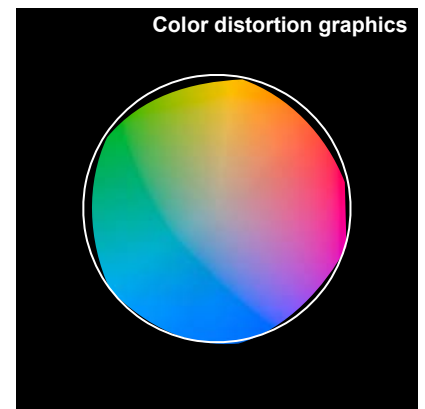
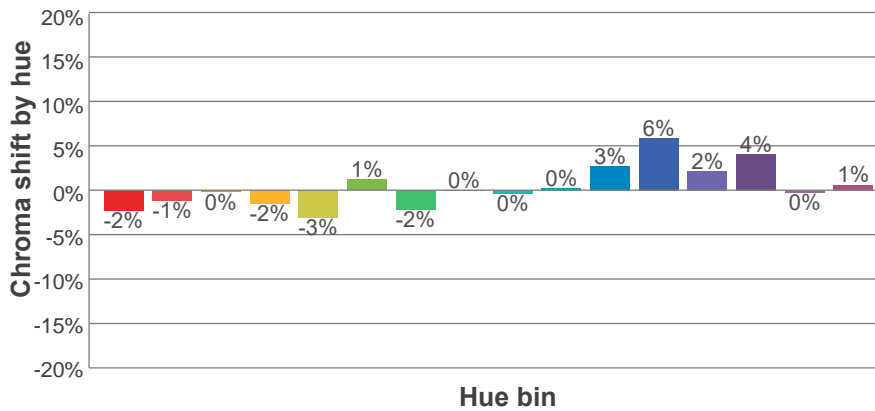
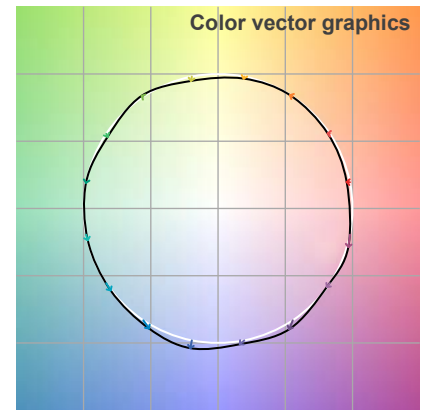
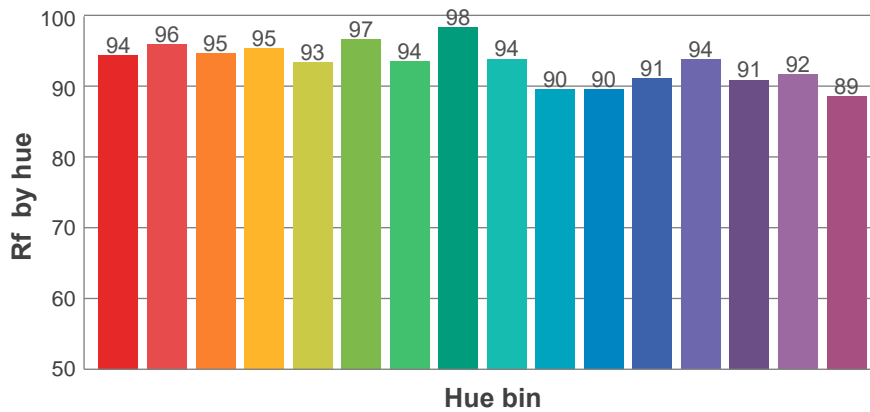
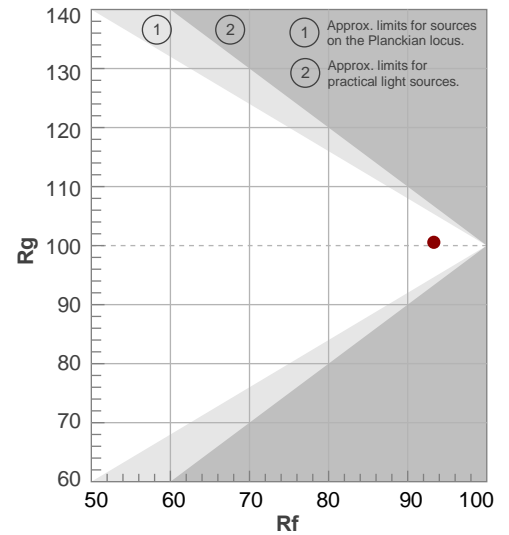
Rf 93.3

Fidelity index Rf

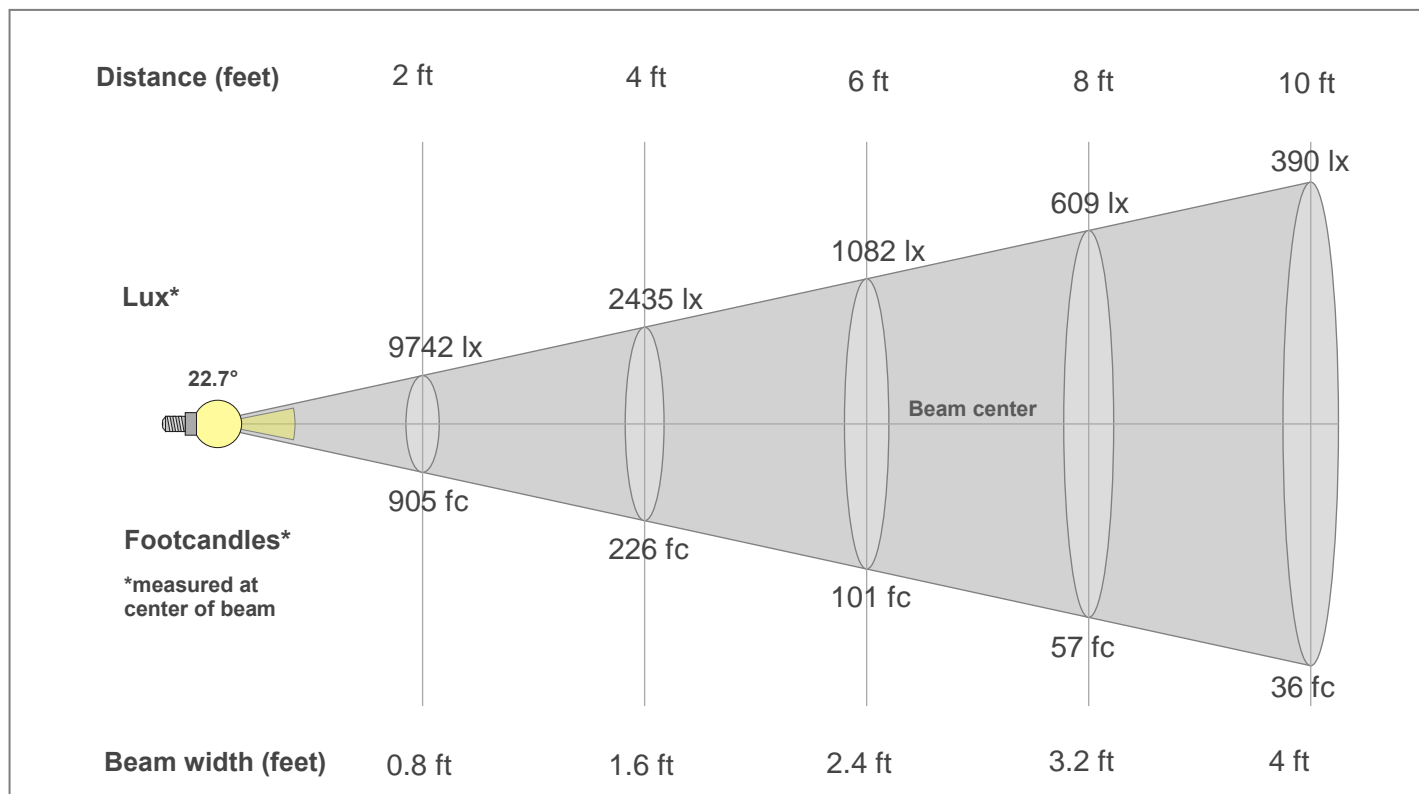
Rg 100.6

Gamut index Rg

Hue Bin	R _f	Shifts (%)	
		Chroma	Hue
1	94	-2%	1%
2	96	-1%	1%
3	95	0%	2%
4	95	-2%	0%
5	93	-3%	1%
6	97	1%	1%
7	94	-2%	1%
8	98	0%	0%
9	94	0%	4%
10	90	0%	6%
11	90	3%	7%
12	91	6%	0%
13	94	2%	-4%
14	91	4%	-6%
15	92	0%	-4%
16	89	1%	-9%



Beam Details



Beam Intensities from 1-20m

1m	2m	3m	4m	5m	6m	7m	8m	9m	10m	11m	12m	13m	14m	15m	16m	17m	18m	19m	20m
3.3ft	6.6ft	9.8ft	13.1ft	16.4ft	19.7ft	23ft	26.2ft	29.5ft	32.8ft	36.1ft	39.4ft	42.7ft	45.9ft	49.2ft	52.5ft	55.8ft	59.1ft	62.3ft	65.6ft
3620lx	905lx	402lx	226lx	145lx	101lx	74lx	57lx	45lx	36lx	30lx	25lx	21lx	18lx	16lx	14lx	13lx	11lx	10lx	9lx
336.3fc	84.1fc	37.4fc	21fc	13.5fc	9.3fc	6.9fc	5.3fc	4.2fc	3.4fc	2.8fc	2.3fc	2fc	1.7fc	1.5fc	1.3fc	1.2fc	1fc	0.9fc	0.8fc

Intensities in 0° c-plane

0°	2°	4°	6°	8°	10°	12°	14°	16°	18°	20°	22°	24°	26°	28°	30°	32°	34°	36°	38°
3620	3557	3367	3055	2637	2153	1680	1271	966	742	570	427	309	215	139	82	45	26	18	12
100%	98%	93%	84%	73%	59%	46%	35%	27%	21%	16%	12%	9%	6%	4%	2%	1%	1%	0%	0%

Intensities in 90° c-plane

0°	2°	4°	6°	8°	10°	12°	14°	16°	18°	20°	22°	24°	26°	28°	30°	32°	34°	36°	38°
3620	3555	3337	3005	2578	2108	1655	1280	994	775	599	450	329	231	148	92	53	28	18	12
100%	98%	92%	83%	71%	58%	46%	35%	27%	21%	17%	12%	9%	6%	4%	3%	1%	1%	0%	0%

Intensities in 180° c-plane

0°	2°	4°	6°	8°	10°	12°	14°	16°	18°	20°	22°	24°	26°	28°	30°	32°	34°	36°	38°
3620	3557	3367	3055	2637	2153	1680	1271	966	742	570	427	309	215	139	82	45	26	18	12
100%	98%	93%	84%	73%	59%	46%	35%	27%	21%	16%	12%	9%	6%	4%	2%	1%	1%	0%	0%

Intensities in 270° c-plane

0°	2°	4°	6°	8°	10°	12°	14°	16°	18°	20°	22°	24°	26°	28°	30°	32°	34°	36°	38°
3620	3555	3337	3005	2578	2108	1655	1280	994	775	599	450	329	231	148	92	53	28	18	12
100%	98%	92%	83%	71%	58%	46%	35%	27%	21%	17%	12%	9%	6%	4%	3%	1%	1%	0%	0%

Beam angle 50%	Field angle 10%	Cut-off angle 2.5%	Intensity ratio in 120°	Intensity ratio in 90°
22.7°	46.5°	59.7°	99.5%	99.3%