

Photometric / Colorimetric / Electric Report

Fixture Model:

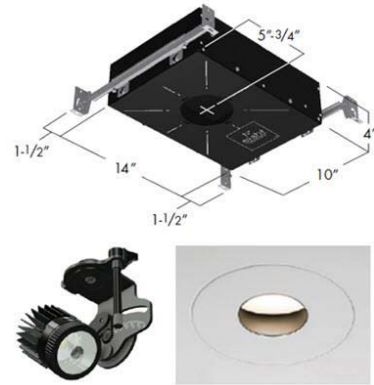
804S-J2S-WD-40-DIM1-8-350-FR-P-1-WH-WW-8-20d

Trim Model:

FR-P-1-WH-WW-8

Date:

3/24/2022



Light efficiency:

33 Lumen/Watt

Light quality:

CRI: 97.1

Color temperature:

3070 K

CIE 1931:

**x: 0.430
y: 0.397**

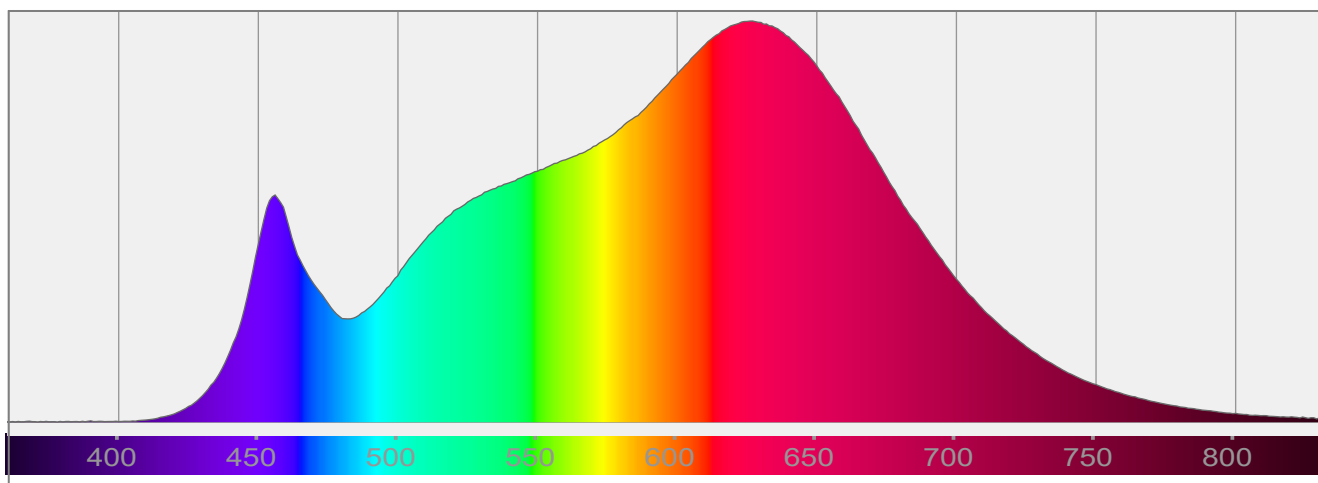
Output: 479 lm

Peak: 337 cd

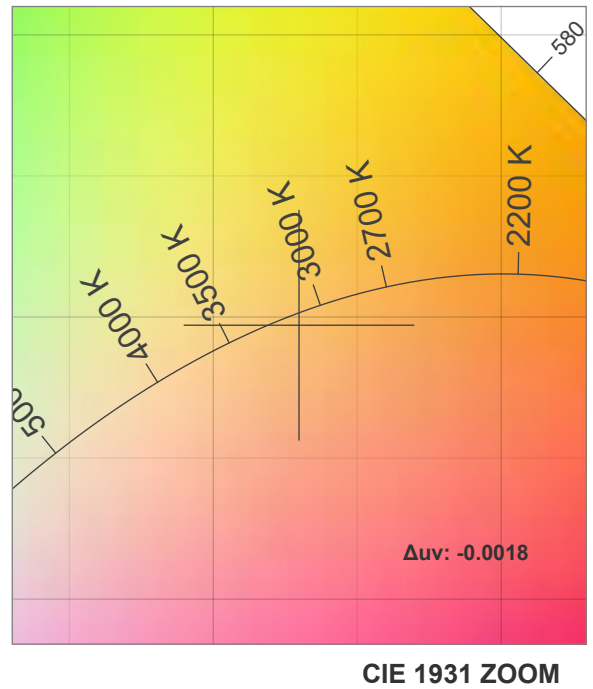
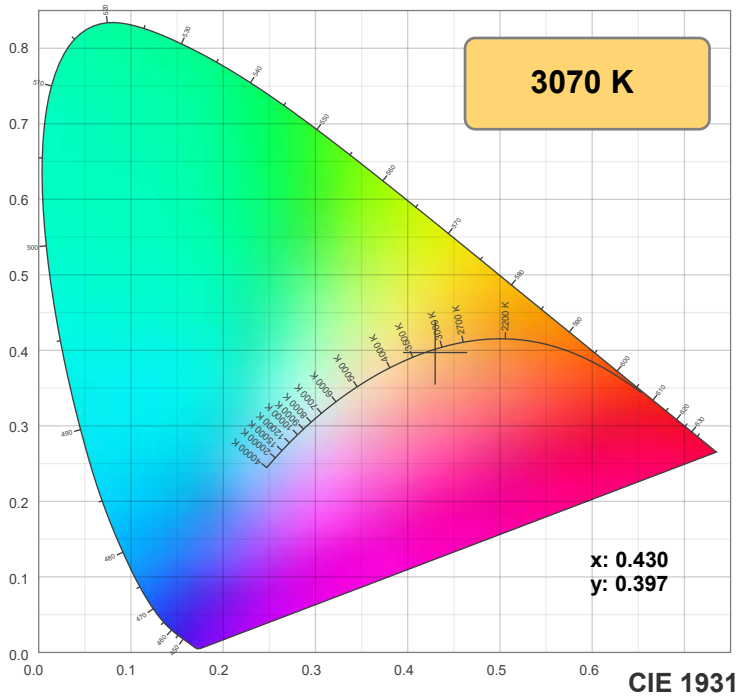
Power: 14.5 W

PF: 0.99

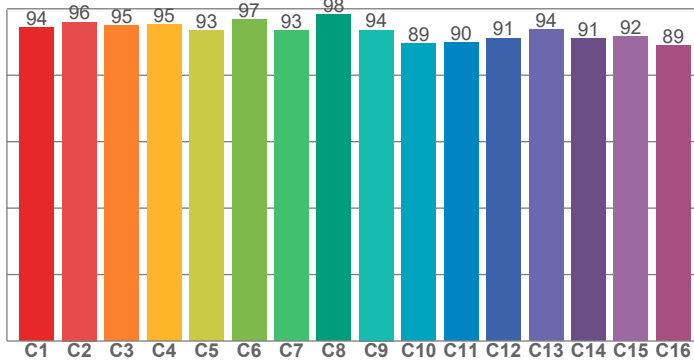
Spectra:



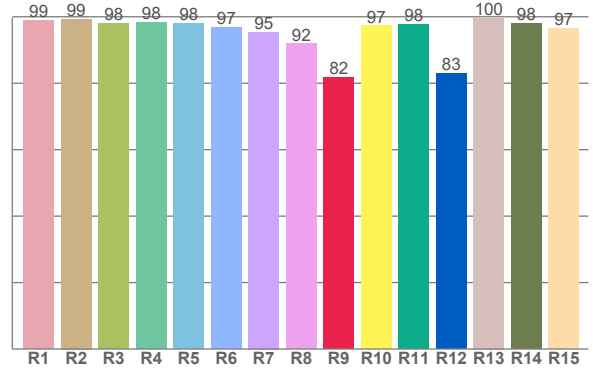
Color Details



TM-30: 93.3



CRI: 97.1 (R1-R8)



CRI R Values:

R1	R2	R3	R4	R5	R6	R7	R8	R9	R10	R11	R12	R13	R14	R15
98.8	99.3	97.9	98.4	98.1	96.7	95.4	91.8	81.9	97.2	97.7	82.9	99.6	97.9	96.6

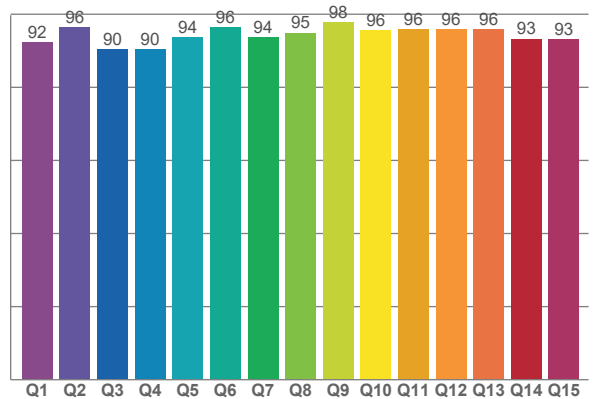
TM30 C Values:

C1	C2	C3	C4	C5	C6	C7	C8	C9	C10	C11	C12	C13	C14	C15	C16
94.3	96.0	94.9	95.3	93.5	96.8	93.5	98.3	93.6	89.5	89.8	91.2	93.7	91.0	91.5	88.8

CQS Q values:

Q1	Q2	Q3	Q4	Q5	Q6	Q7	Q8	Q9	Q10	Q11	Q12	Q13	Q14	Q15
92.4	96.5	90.4	90.3	93.8	96.4	93.6	94.9	97.8	95.7	95.8	95.9	95.9	93.3	93.0

CQS: 93.9



Color Parameters:

CCT	CRI	CRI R9	TM30 Rf	TM30 Rg	CQS	x	y	u	v	Δuv
3070 K	97.1	81.9	93.3	100.4	93.9	0.430	0.397	0.249	0.345	-0.0018

TM-30 Details

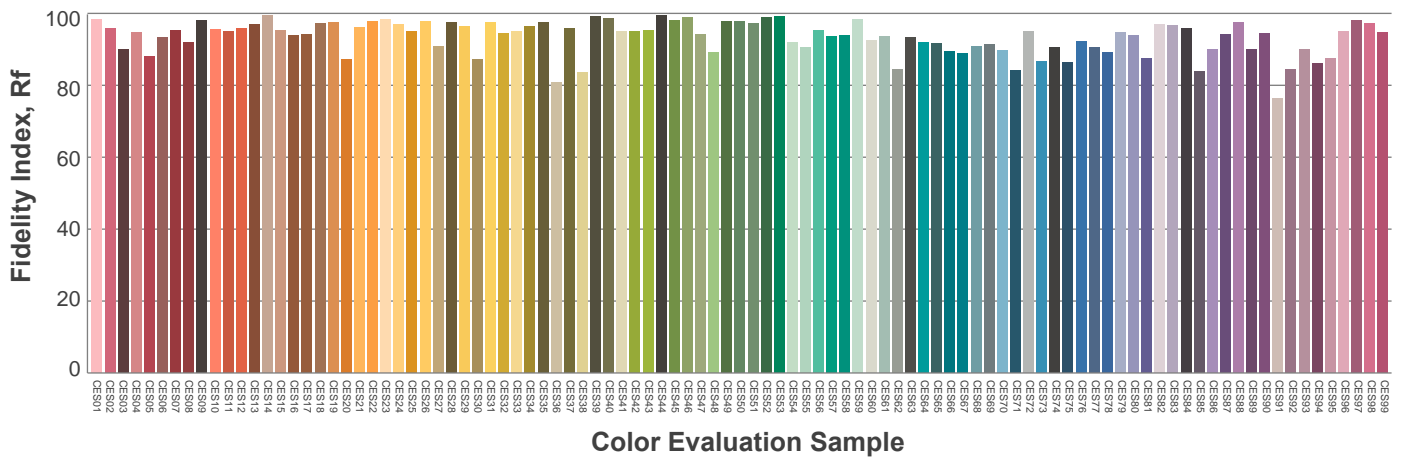
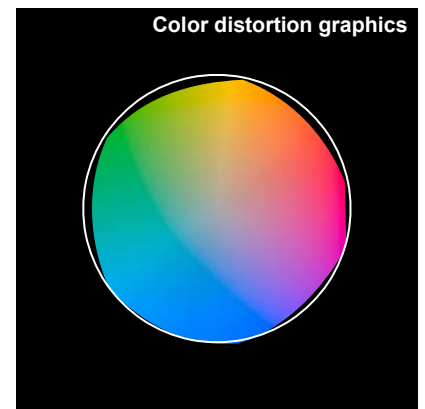
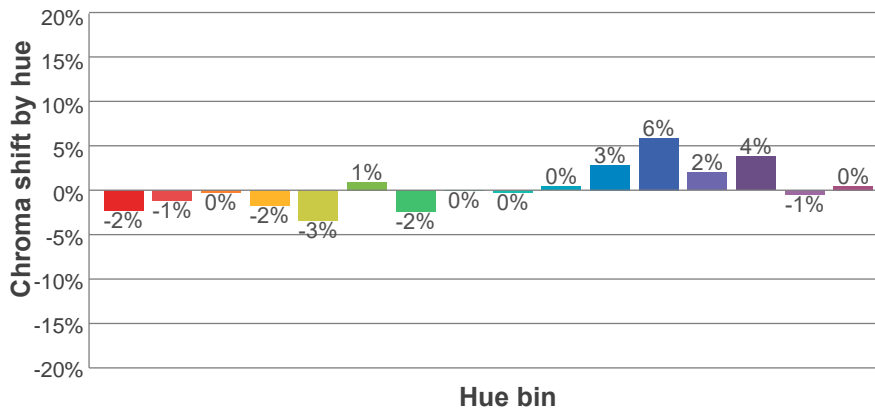
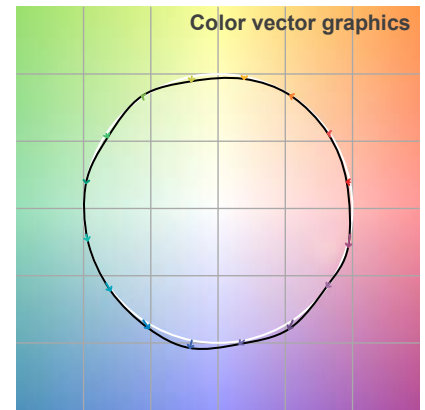
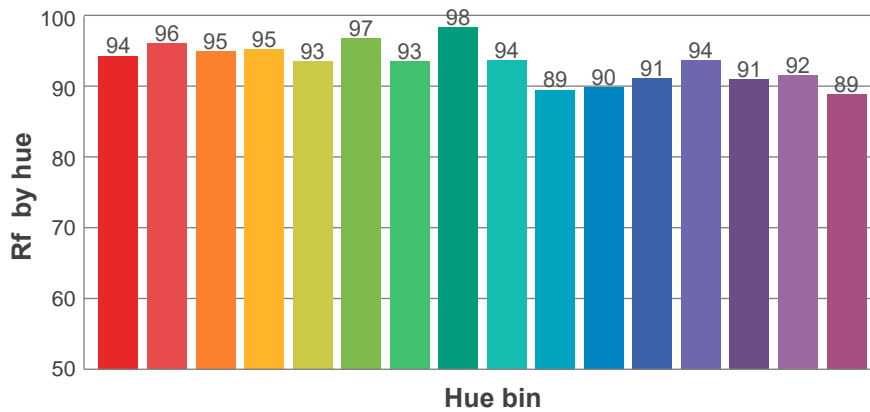
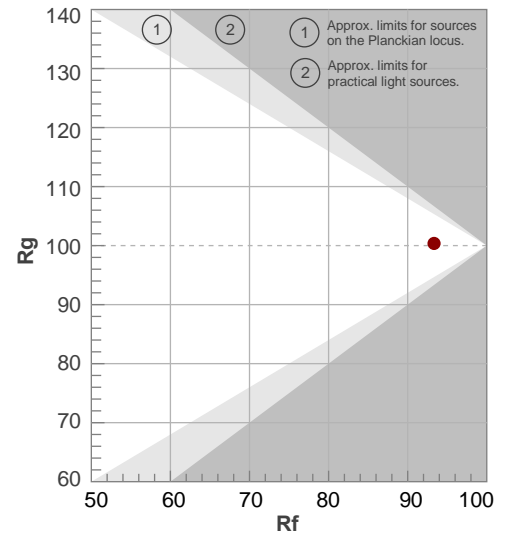
Rf 93.3

Fidelity index Rf

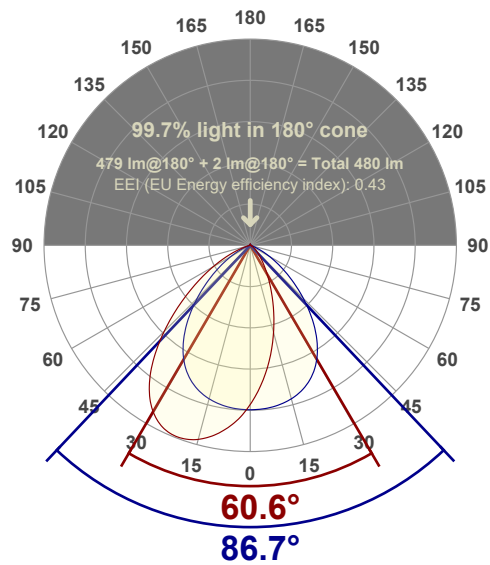
Rg 100.4

Gamut index Rg

Hue Bin	R _f	Shifts (%)	
		Chroma	Hue
1	94	-2%	1%
2	96	-1%	1%
3	95	0%	2%
4	95	-2%	0%
5	93	-3%	1%
6	97	1%	1%
7	93	-2%	2%
8	98	0%	1%
9	94	0%	4%
10	89	0%	6%
11	90	3%	7%
12	91	6%	0%
13	94	2%	-4%
14	91	4%	-6%
15	92	-1%	-3%
16	89	0%	-9%



Angular Distribution Through 0° and 90° Planes



Beam Angle: 86.7°W x 60.6°L

Beam Details

