

## Photometric / Colorimetric / Electric Report

Fixture Model:

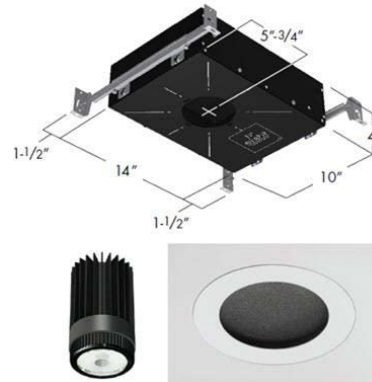
**804S-J2S-WD-15-DIM1-8-350-FR-LG-P-1-WH-NL**

Trim Model:

**FR-LG-P-1-WH-NL**

Date:

**3/24/2022**



Light efficiency:

**60 Lumen/Watt**

Light quality:

**CRI: 97.0**

Color temperature:

**3115 K**

CIE 1931:

**x: 0.427  
y: 0.396**

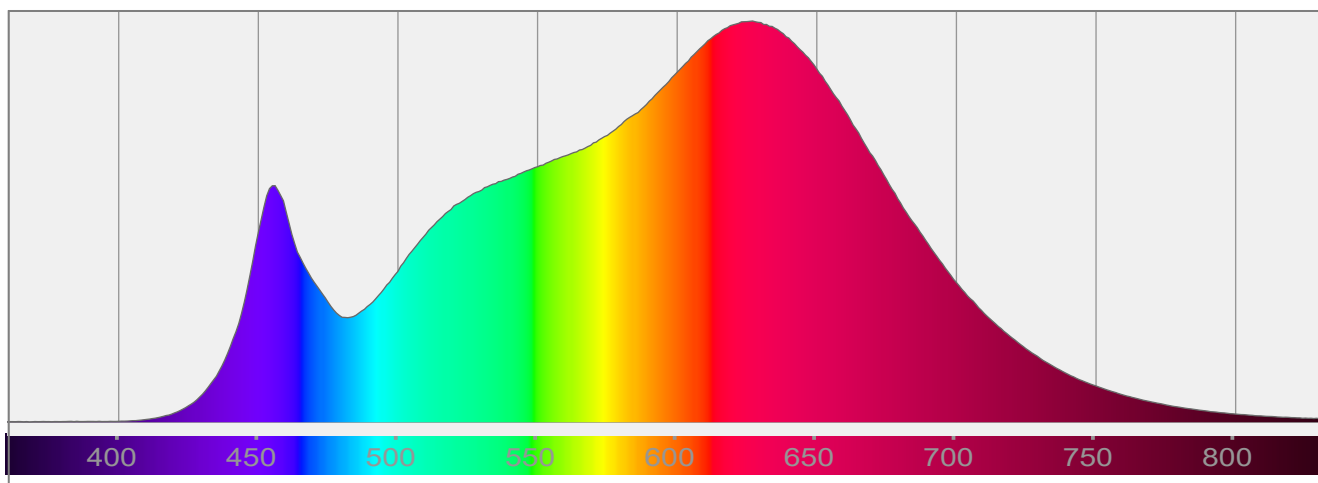
**Output: 862 lm**

**Peak: 3616 cd**

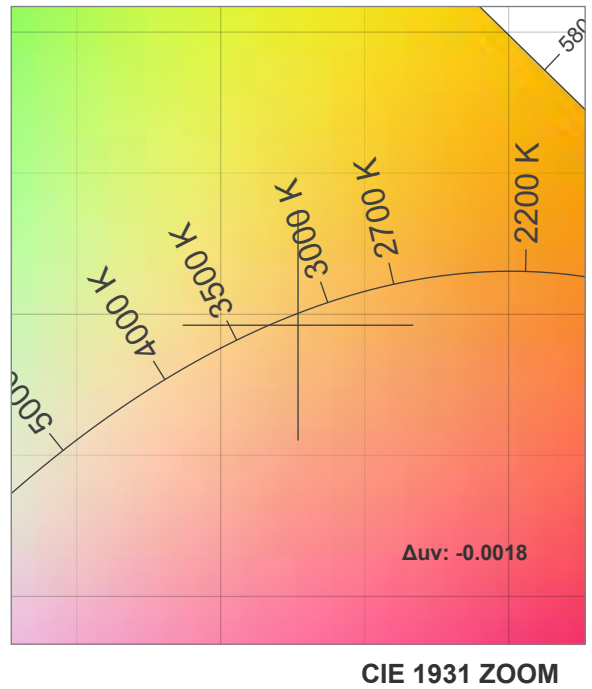
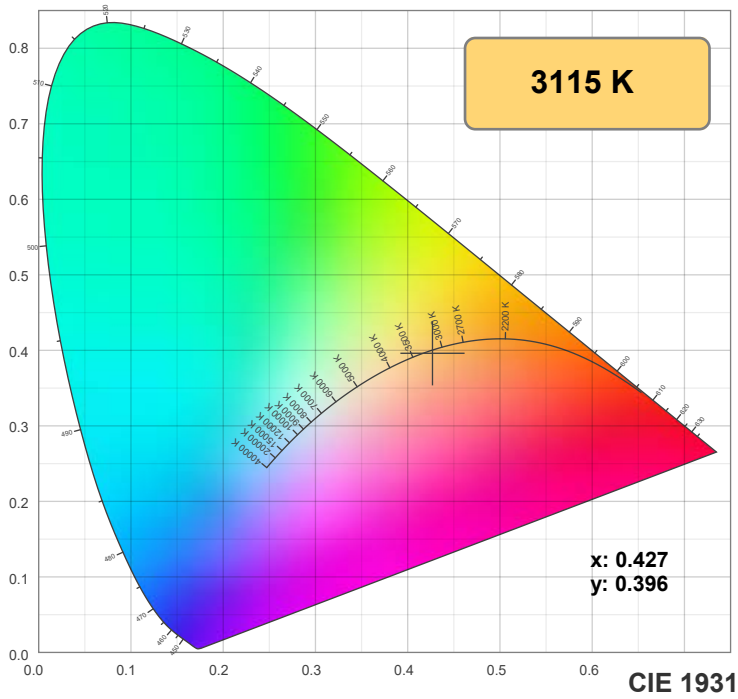
**Power: 14.5 W**

**PF: 1.0**

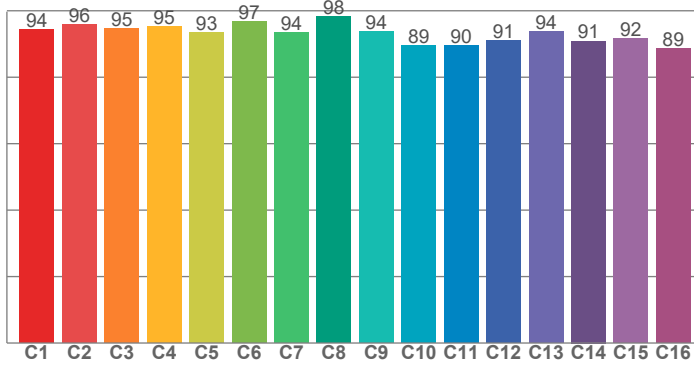
Spectra:



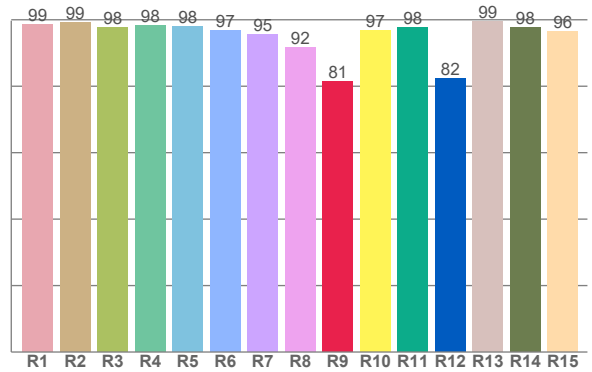
## Color Details



**TM-30: 93.3**



**CRI: 97.0 (R1-R8)**



**CRI R Values:**

R1	R2	R3	R4	R5	R6	R7	R8	R9	R10	R11	R12	R13	R14	R15
98.7	99.2	97.7	98.2	97.9	96.7	95.5	91.7	81.4	96.7	97.6	82.3	99.5	97.8	96.4

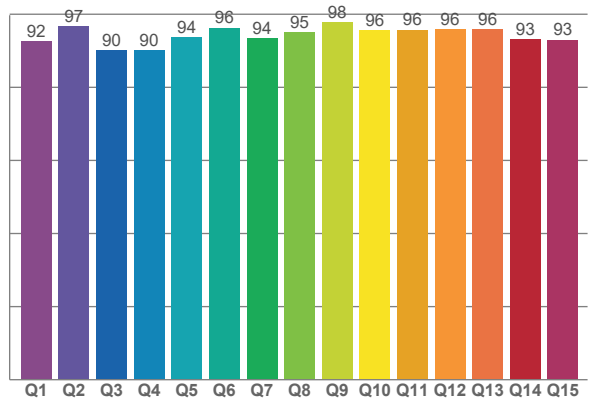
**TM30 C Values:**

C1	C2	C3	C4	C5	C6	C7	C8	C9	C10	C11	C12	C13	C14	C15	C16
94.3	95.9	94.7	95.3	93.4	96.7	93.5	98.3	93.7	89.4	89.6	91.1	93.8	90.9	91.6	88.6

**CQS Q values:**

Q1	Q2	Q3	Q4	Q5	Q6	Q7	Q8	Q9	Q10	Q11	Q12	Q13	Q14	Q15
92.5	96.7	90.1	90.2	93.8	96.3	93.5	95.0	97.8	95.6	95.8	95.9	96.0	93.2	93.0

**CQS: 93.8**



**Color Parameters:**

CCT	CRI	CRI R9	TM30 Rf	TM30 Rg	CQS	x	y	u	v	Δuv
3115 K	97.0	81.4	93.3	100.4	93.8	0.427	0.396	0.247	0.344	-0.0018

# TM-30 Details

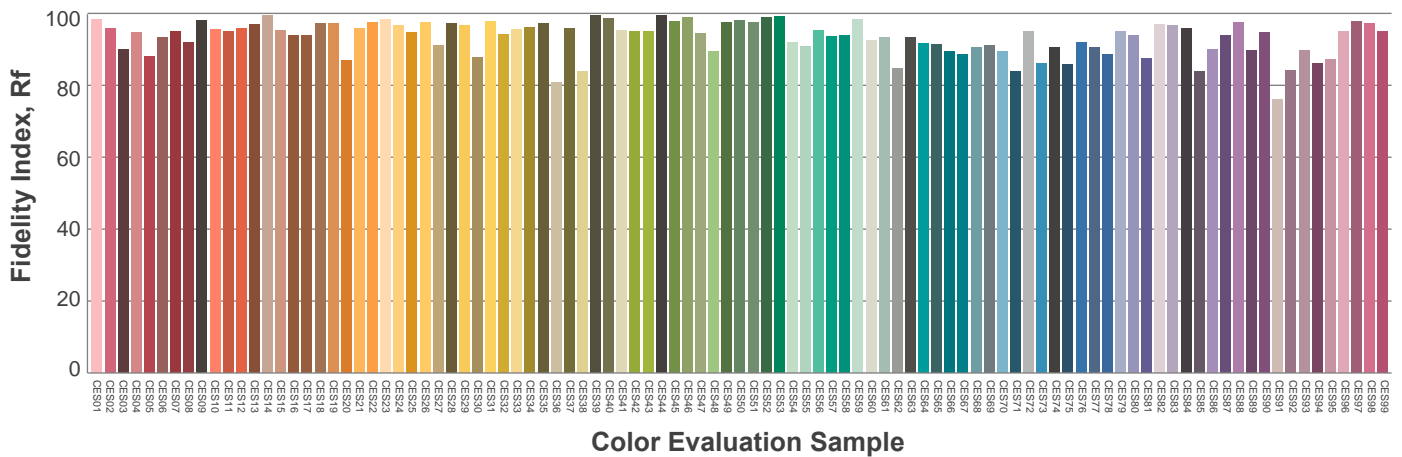
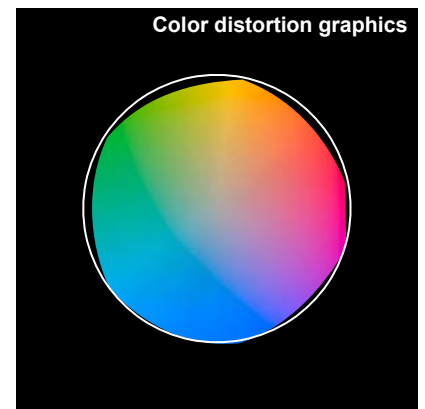
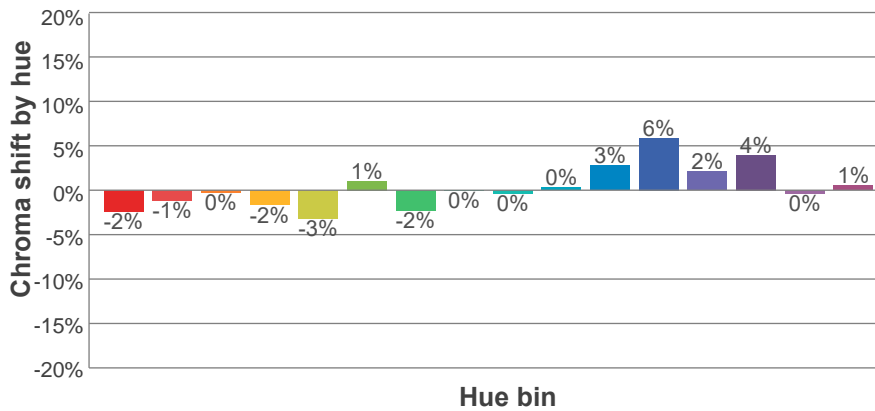
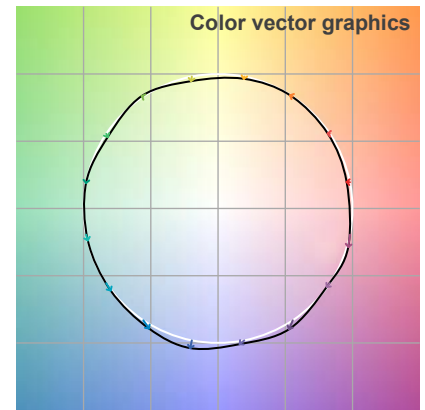
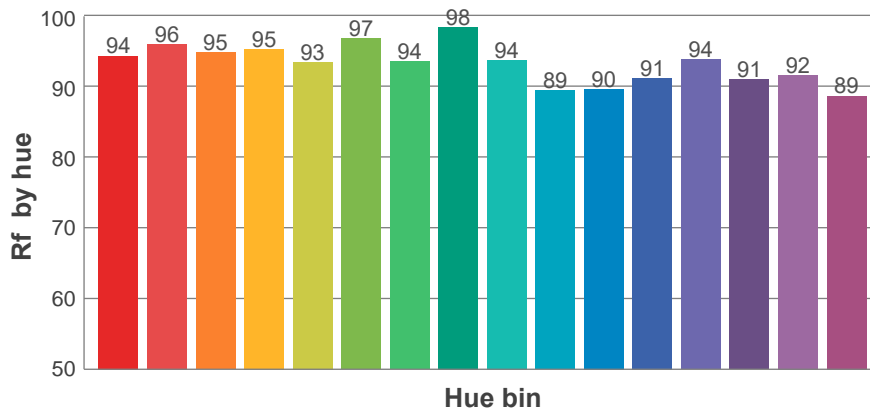
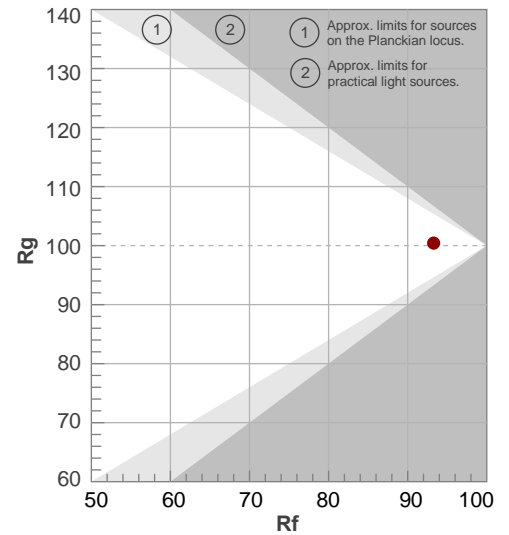
**Rf 93.3**

Fidelity index Rf

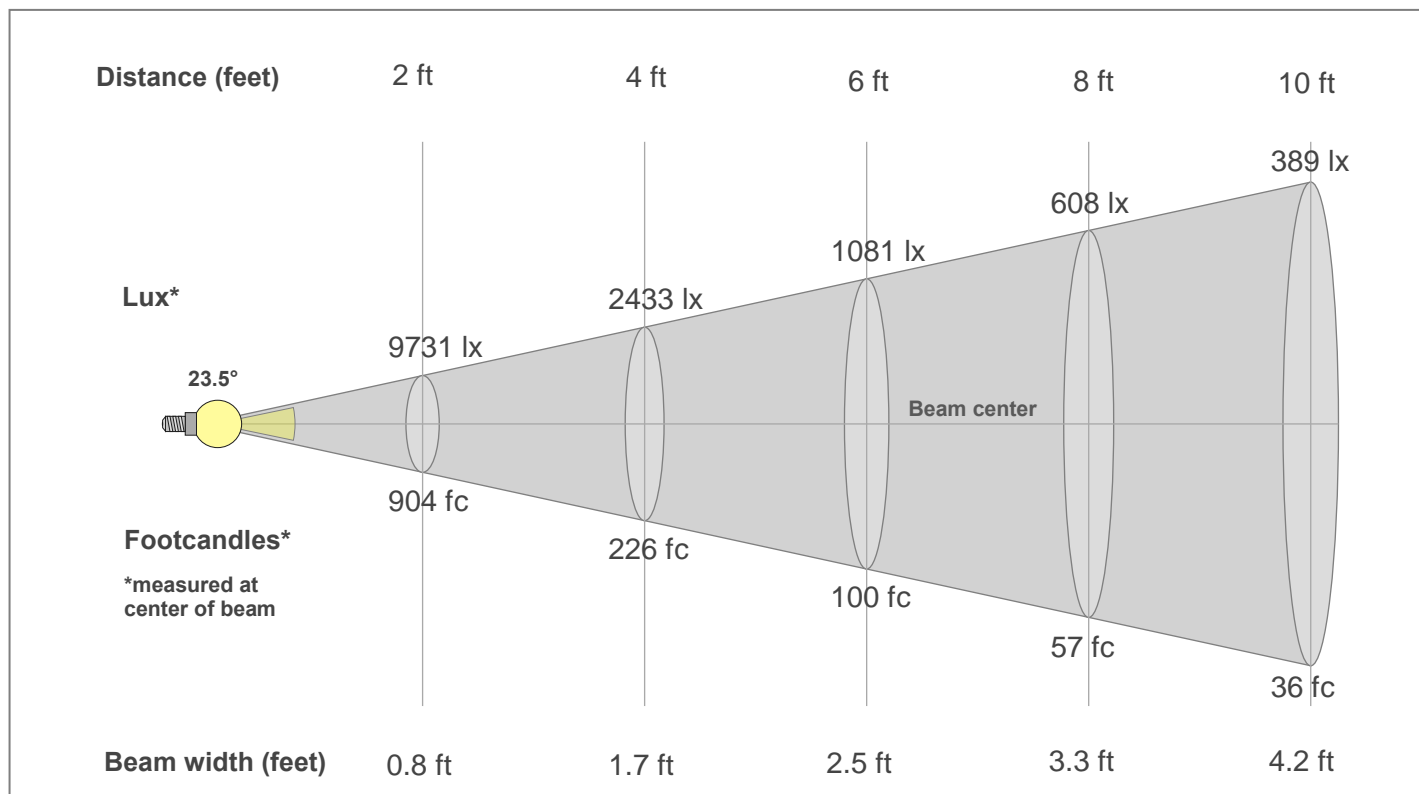
**Rg 100.4**

Gamut index Rg

Hue Bin	R <sub>f</sub>	Shifts (%)	
		Chroma	Hue
1	94	-2%	1%
2	96	-1%	1%
3	95	0%	2%
4	95	-2%	0%
5	93	-3%	1%
6	97	1%	1%
7	94	-2%	1%
8	98	0%	1%
9	94	0%	4%
10	89	0%	6%
11	90	3%	7%
12	91	6%	0%
13	94	2%	-4%
14	91	4%	-6%
15	92	0%	-4%
16	89	1%	-9%



## Beam Details



### Beam Intensities from 1-20m

1m	2m	3m	4m	5m	6m	7m	8m	9m	10m	11m	12m	13m	14m	15m	16m	17m	18m	19m	20m
3.3ft	6.6ft	9.8ft	13.1ft	16.4ft	19.7ft	23ft	26.2ft	29.5ft	32.8ft	36.1ft	39.4ft	42.7ft	45.9ft	49.2ft	52.5ft	55.8ft	59.1ft	62.3ft	65.6ft
3616lx	904lx	402lx	226lx	145lx	100lx	74lx	57lx	45lx	36lx	30lx	25lx	21lx	18lx	16lx	14lx	13lx	11lx	10lx	9lx
336fc	84fc	37.3fc	21fc	13.4fc	9.3fc	6.9fc	5.2fc	4.1fc	3.4fc	2.8fc	2.3fc	2fc	1.7fc	1.5fc	1.3fc	1.2fc	1fc	0.9fc	0.8fc

### Intensities in 0° c-plane

0°	2°	4°	6°	8°	10°	12°	14°	16°	18°	20°	22°	24°	26°	28°	30°	32°	34°	36°	38°
3616	3557	3378	3074	2666	2201	1749	1360	1056	825	648	509	398	312	247	196	154	118	85	59
100%	98%	93%	85%	74%	61%	48%	38%	29%	23%	18%	14%	11%	9%	7%	5%	4%	3%	2%	2%

### Intensities in 90° c-plane

0°	2°	4°	6°	8°	10°	12°	14°	16°	18°	20°	22°	24°	26°	28°	30°	32°	34°	36°	38°
3616	3557	3378	3074	2666	2201	1749	1360	1056	825	648	509	398	312	247	196	154	118	85	59
100%	98%	93%	85%	74%	61%	48%	38%	29%	23%	18%	14%	11%	9%	7%	5%	4%	3%	2%	2%

### Intensities in 180° c-plane

0°	2°	4°	6°	8°	10°	12°	14°	16°	18°	20°	22°	24°	26°	28°	30°	32°	34°	36°	38°
3616	3557	3378	3074	2666	2201	1749	1360	1056	825	648	509	398	312	247	196	154	118	85	59
100%	98%	93%	85%	74%	61%	48%	38%	29%	23%	18%	14%	11%	9%	7%	5%	4%	3%	2%	2%

### Intensities in 270° c-plane

0°	2°	4°	6°	8°	10°	12°	14°	16°	18°	20°	22°	24°	26°	28°	30°	32°	34°	36°	38°
3616	3557	3378	3074	2666	2201	1749	1360	1056	825	648	509	398	312	247	196	154	118	85	59
100%	98%	93%	85%	74%	61%	48%	38%	29%	23%	18%	14%	11%	9%	7%	5%	4%	3%	2%	2%

Beam angle 50%	Field angle 10%	Cut-off angle 2.5%	Intensity ratio in 120°	Intensity ratio in 90°
23.5°	49.6°	71.4°	99.6%	99.1%