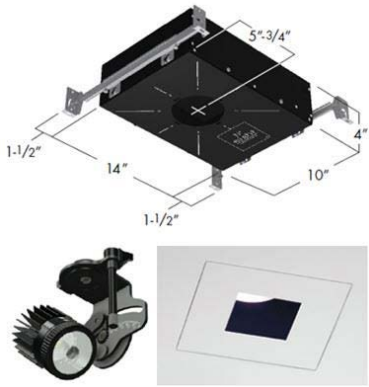


# Photometric / Colorimetric / Electric Report

**Fixture Model:**  
**804S-J2S-WD-4-40-PR1-8-350-FS-P-1-WH**

**Trim Model:**  
**FS-P-1-WH**

**Date:**  
**8/6/2024**



**Light efficiency:**  
**51 Lumen/Watt**

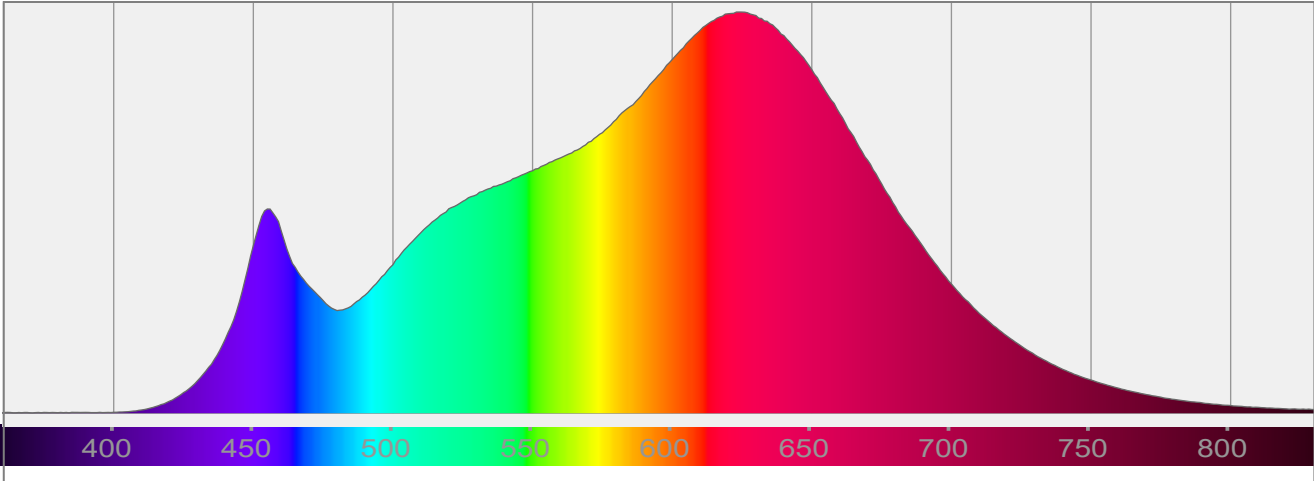
**Light quality:**  
**CRI: 96.5**

**Color temperature:**  
**3007 K**

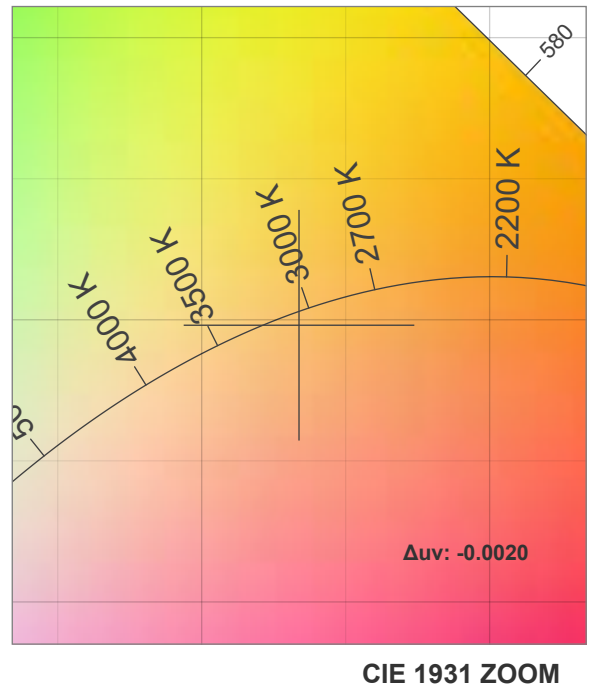
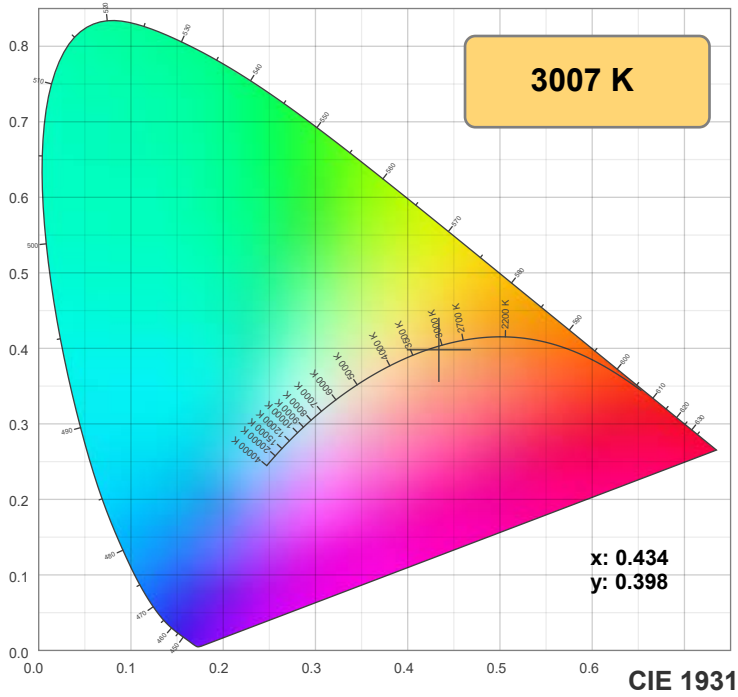
**CIE 1931:**  
**x: 0.434**  
**y: 0.398**

<b>Output:</b>	<b>734 lm</b>
<b>Peak:</b>	<b>1844 cd</b>
<b>Power:</b>	<b>14.4 W</b>
<b>PF:</b>	<b>0.99</b>

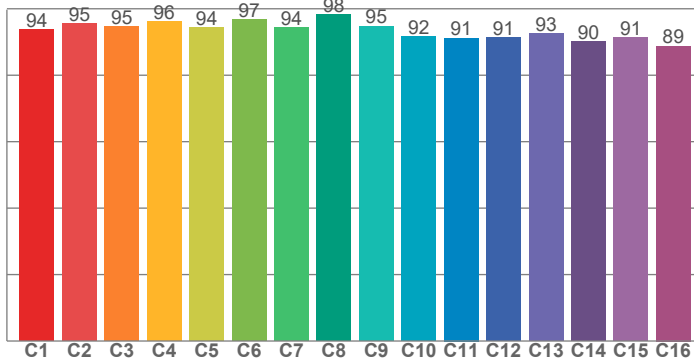
## Spectra:



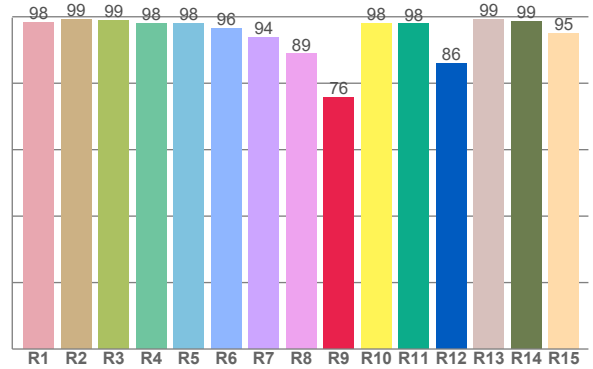
## Color Details



TM-30: 93.6



CRI: 96.5 (R1-R8)



CRI R Values:

R1	R2	R3	R4	R5	R6	R7	R8	R9	R10	R11	R12	R13	R14	R15
98.3	99.3	98.9	97.9	98.1	96.4	93.9	88.8	75.7	98.1	97.8	86.0	99.3	98.7	95.1

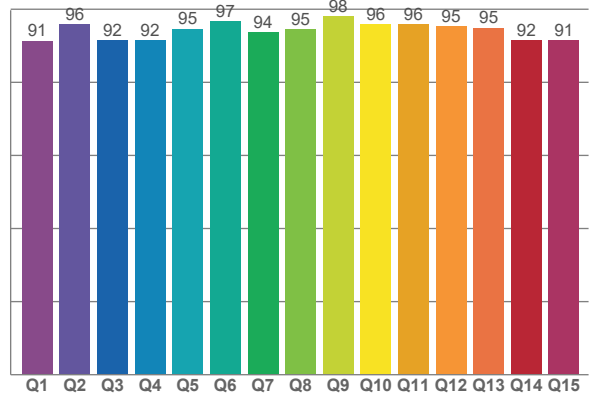
TM30 C Values:

C1	C2	C3	C4	C5	C6	C7	C8	C9	C10	C11	C12	C13	C14	C15	C16
93.7	95.4	94.6	96.3	94.3	96.8	94.3	98.3	94.8	91.7	91.2	91.4	92.5	90.2	91.2	88.8

CQS Q values:

Q1	Q2	Q3	Q4	Q5	Q6	Q7	Q8	Q9	Q10	Q11	Q12	Q13	Q14	Q15
91.4	96.0	91.5	91.6	94.6	96.6	93.7	94.5	98.0	95.9	95.8	95.3	94.9	91.6	91.4

CQS: 93.7



Color Parameters:

CCT	CRI	CRI R9	TM30 Rf	TM30 Rg	CQS	x	y	u	v	Δuv
3007 K	96.5	75.7	93.6	100.1	93.7	0.434	0.398	0.251	0.346	-0.0020

# TM-30 Details

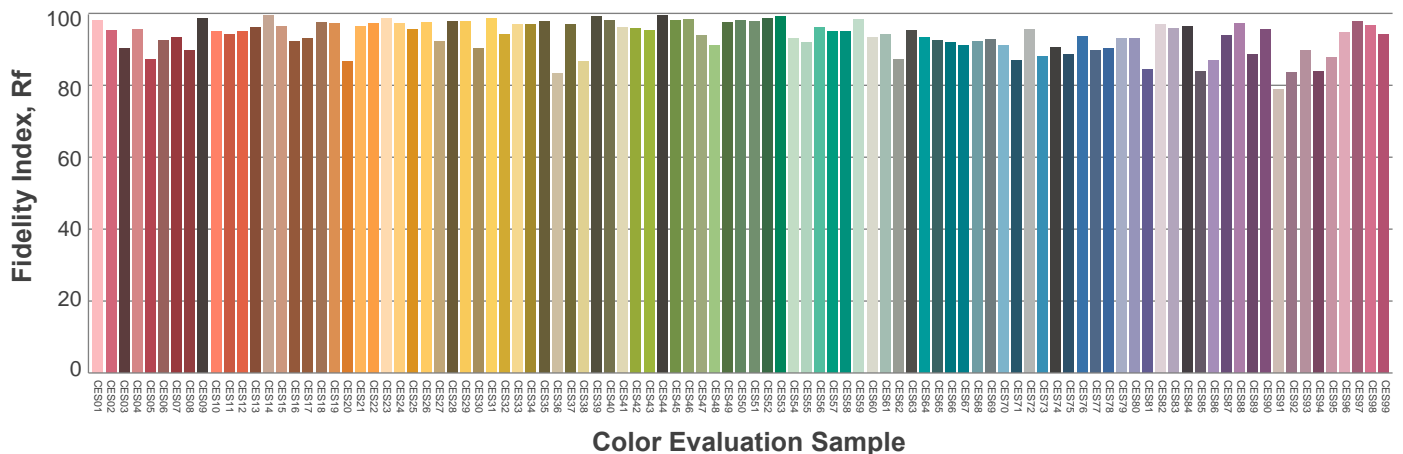
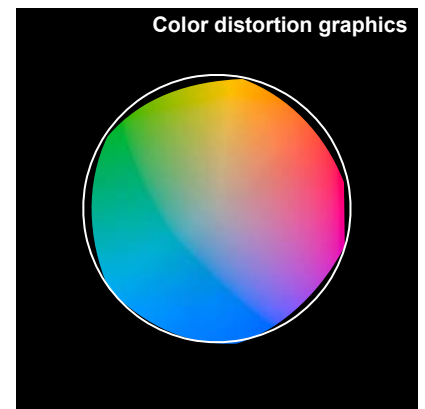
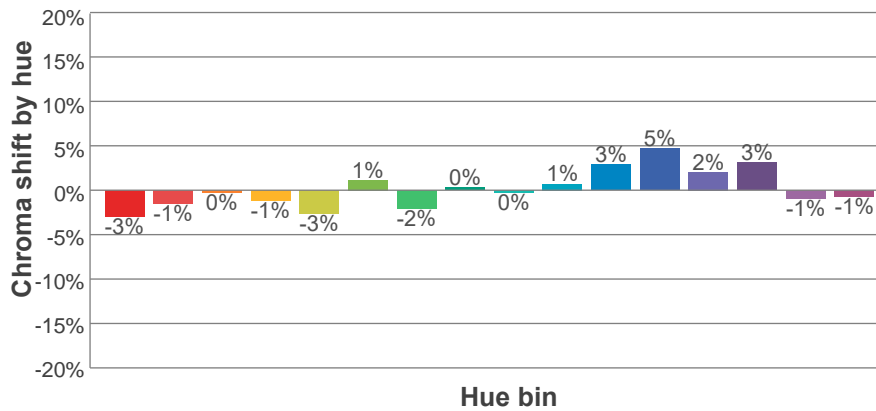
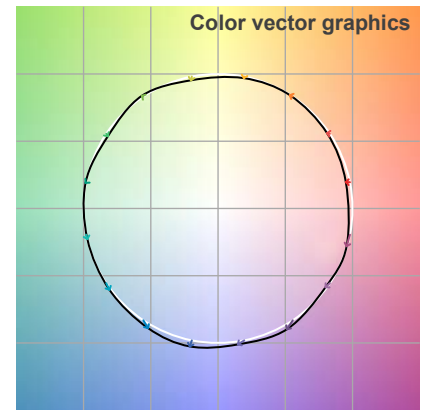
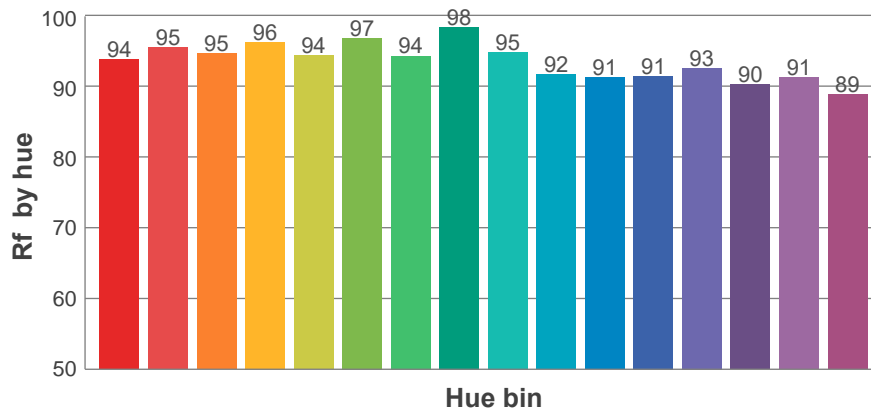
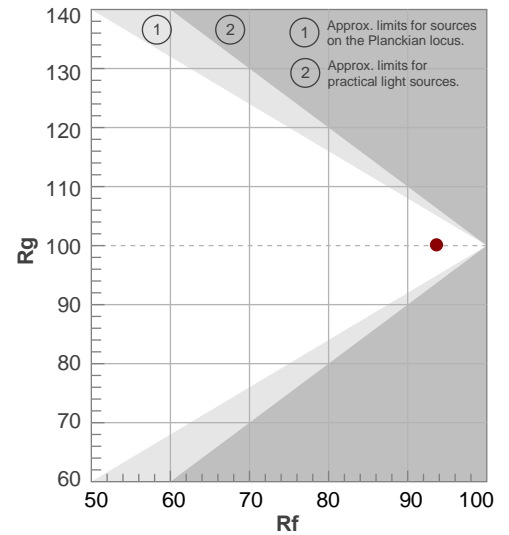
**Rf 93.6**

Fidelity index Rf

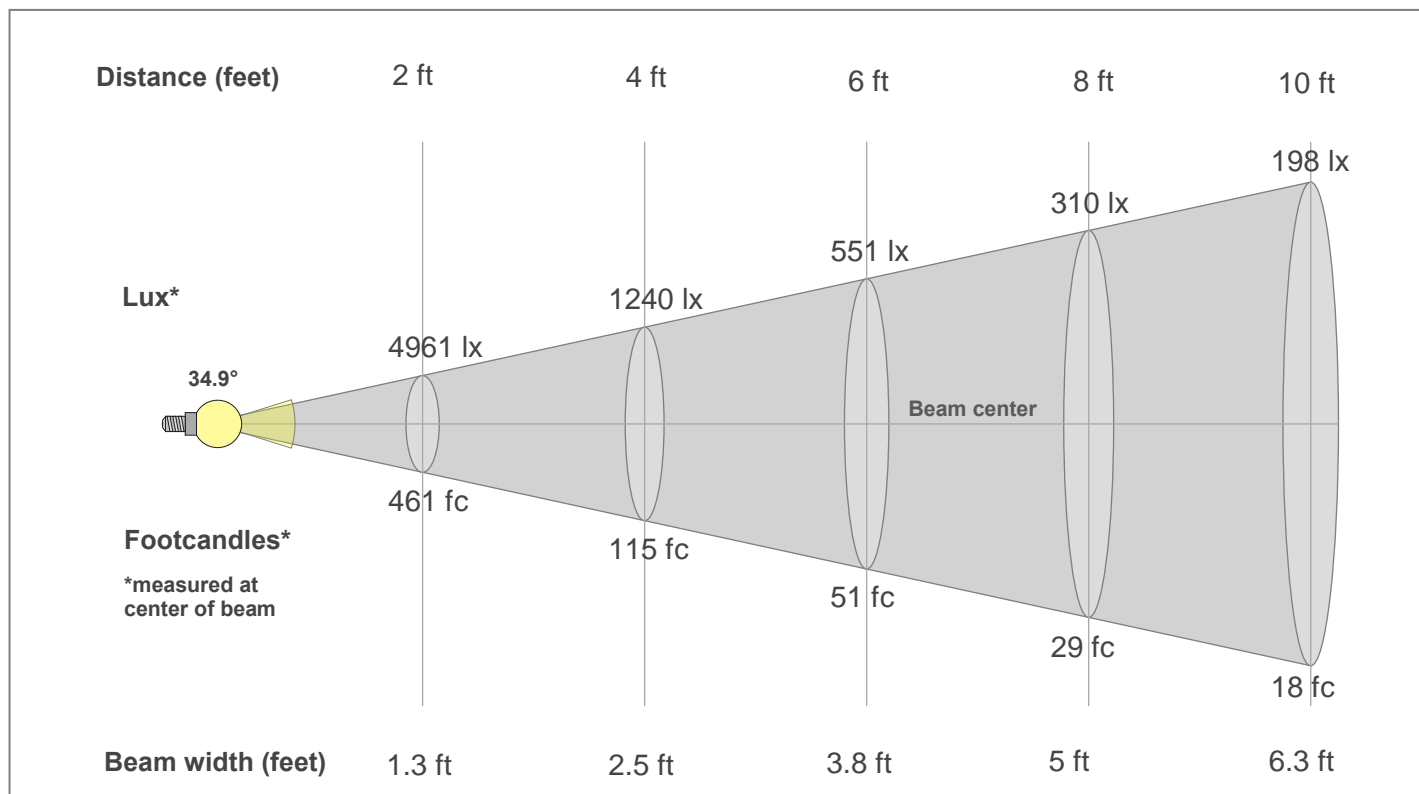
**Rg 100.1**

Gamut index Rg

Hue Bin	R <sub>f</sub>	Shifts (%)	
		Chroma	Hue
1	94	-3%	1%
2	95	-1%	1%
3	95	0%	2%
4	96	-1%	0%
5	94	-3%	1%
6	97	1%	1%
7	94	-2%	1%
8	98	0%	1%
9	95	0%	3%
10	92	1%	5%
11	91	3%	6%
12	91	5%	-1%
13	93	2%	-5%
14	90	3%	-7%
15	91	-1%	-4%
16	89	-1%	-9%



## Beam Details



### Beam Intensities from 1-20m

1m	2m	3m	4m	5m	6m	7m	8m	9m	10m	11m	12m	13m	14m	15m	16m	17m	18m	19m	20m
3.3ft	6.6ft	9.8ft	13.1ft	16.4ft	19.7ft	23ft	26.2ft	29.5ft	32.8ft	36.1ft	39.4ft	42.7ft	45.9ft	49.2ft	52.5ft	55.8ft	59.1ft	62.3ft	65.6ft
1843lx	461lx	205lx	115lx	74lx	51lx	38lx	29lx	23lx	18lx	15lx	13lx	11lx	9lx	8lx	7lx	6lx	6lx	5lx	5lx
171.3fc	42.8fc	19fc	10.7fc	6.9fc	4.8fc	3.5fc	2.7fc	2.1fc	1.7fc	1.4fc	1.2fc	1fc	0.9fc	0.8fc	0.7fc	0.6fc	0.5fc	0.5fc	0.4fc

### Intensities in 0° c-plane

0°	2°	4°	6°	8°	10°	12°	14°	16°	18°	20°	22°	24°	26°	28°	30°	32°	34°	36°	38°
1843	1827	1781	1710	1610	1492	1360	1208	1043	875	716	572	447	346	264	201	153	116	88	65
100%	99%	97%	93%	87%	81%	74%	66%	57%	47%	39%	31%	24%	19%	14%	11%	8%	6%	5%	4%

### Intensities in 90° c-plane

0°	2°	4°	6°	8°	10°	12°	14°	16°	18°	20°	22°	24°	26°	28°	30°	32°	34°	36°	38°
1843	1828	1782	1707	1609	1493	1362	1213	1047	876	715	568	443	343	264	201	156	120	91	69
100%	99%	97%	93%	87%	81%	74%	66%	57%	48%	39%	31%	24%	19%	14%	11%	8%	7%	5%	4%

### Intensities in 180° c-plane

0°	2°	4°	6°	8°	10°	12°	14°	16°	18°	20°	22°	24°	26°	28°	30°	32°	34°	36°	38°
1843	1827	1781	1710	1610	1492	1360	1208	1043	875	716	572	447	346	264	201	153	116	88	65
100%	99%	97%	93%	87%	81%	74%	66%	57%	47%	39%	31%	24%	19%	14%	11%	8%	6%	5%	4%

### Intensities in 270° c-plane

0°	2°	4°	6°	8°	10°	12°	14°	16°	18°	20°	22°	24°	26°	28°	30°	32°	34°	36°	38°
1843	1828	1782	1707	1609	1493	1362	1213	1047	876	715	568	443	343	264	201	156	120	91	69
100%	99%	97%	93%	87%	81%	74%	66%	57%	48%	39%	31%	24%	19%	14%	11%	8%	7%	5%	4%

Beam angle 50%	Field angle 10%	Cut-off angle 2.5%	Intensity ratio in 120°	Intensity ratio in 90°
34.9°	61.3°	80.6°	99.5%	99.0%