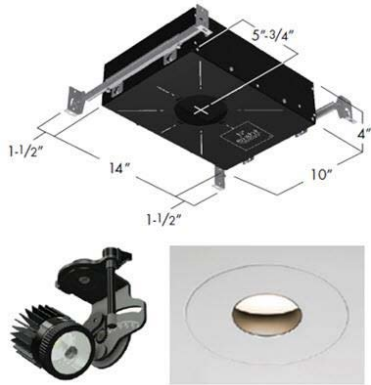


Photometric / Colorimetric / Electric Report

Fixture Model:
804S-J2S-WD-4-40-PR1-8-350-FR-P-1-WH-WW-8-20d

Trim Model:
FR-P-1-WH-WW-8

Date:
8/6/2024



Light efficiency:
35 Lumen/Watt

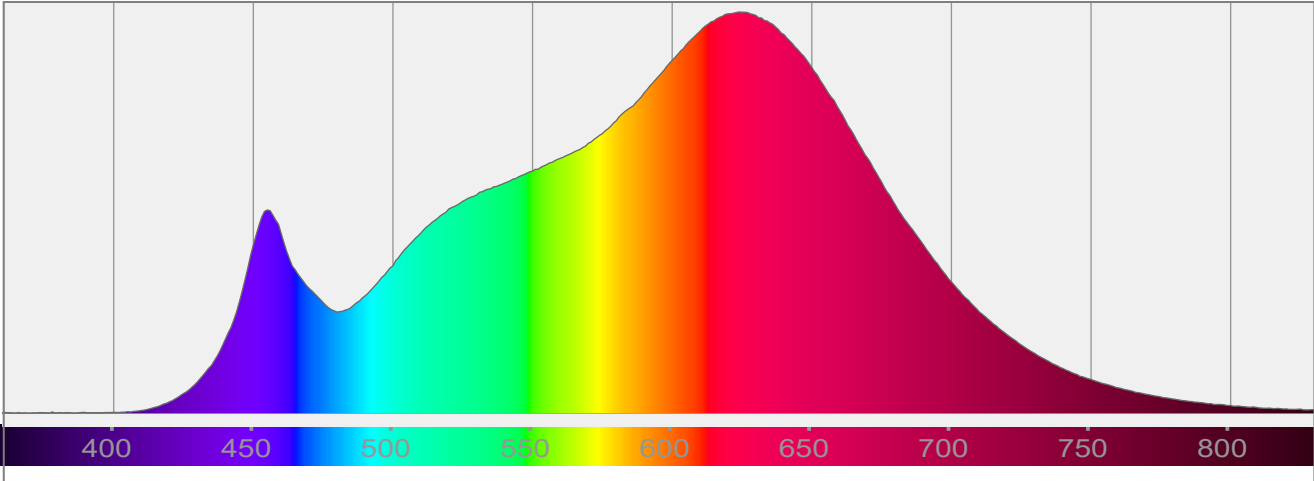
Light quality:
CRI: 96.6

Color temperature:
3000 K

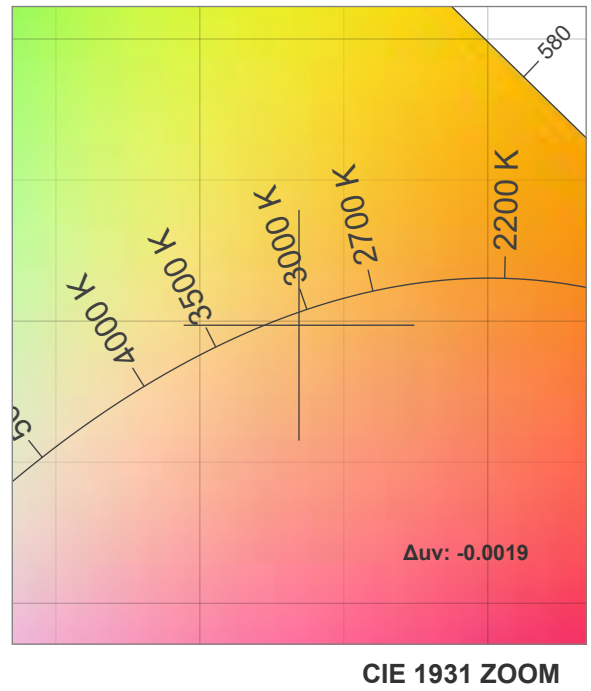
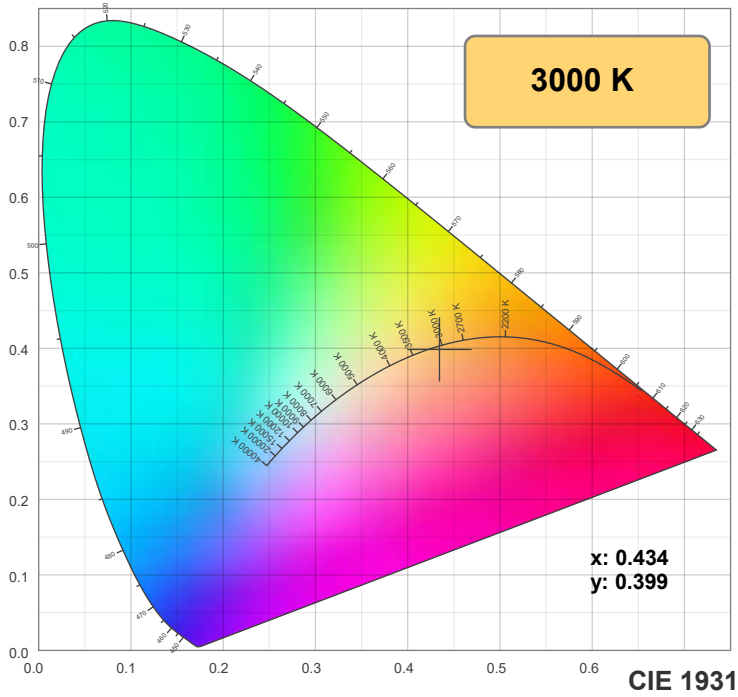
CIE 1931:
x: 0.434
y: 0.399

Output:	506 lm
Peak:	398 cd
Power:	14.5 W
PF:	0.99

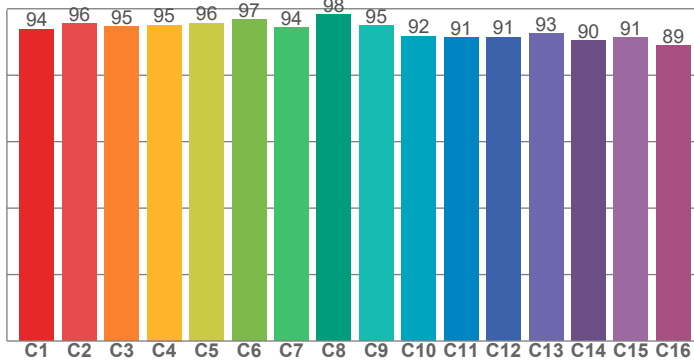
Spectra:



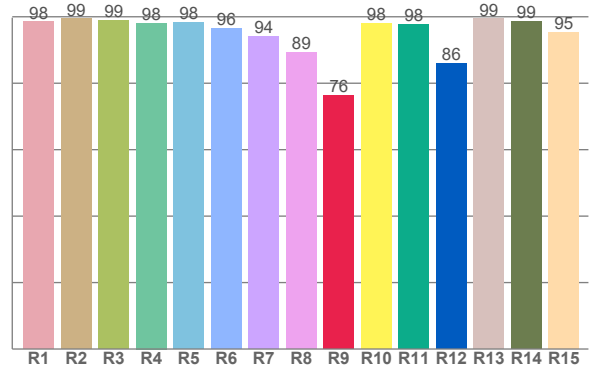
Color Details



TM-30: 93.7



CRI: 96.6 (R1-R8)



CRI R Values:

R1	R2	R3	R4	R5	R6	R7	R8	R9	R10	R11	R12	R13	R14	R15
98.4	99.3	98.9	98.1	98.2	96.4	94.1	89.2	76.4	98.1	97.7	86.0	99.4	98.6	95.2

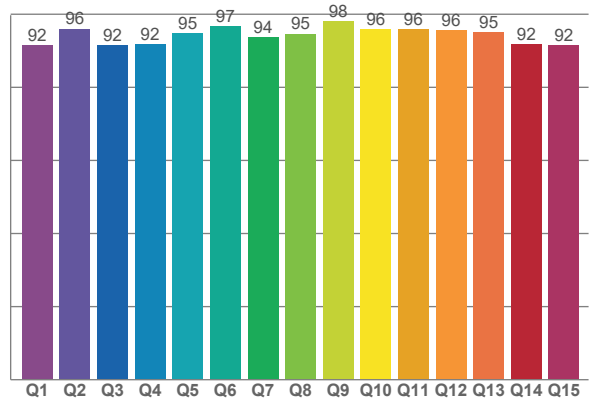
TM30 C Values:

C1	C2	C3	C4	C5	C6	C7	C8	C9	C10	C11	C12	C13	C14	C15	C16
93.9	95.6	94.7	95.1	95.7	96.8	94.3	98.4	94.9	91.8	91.2	91.5	92.6	90.3	91.3	88.9

CQS Q values:

Q1	Q2	Q3	Q4	Q5	Q6	Q7	Q8	Q9	Q10	Q11	Q12	Q13	Q14	Q15
91.5	96.0	91.6	91.8	94.8	96.7	93.8	94.7	98.1	96.0	95.9	95.5	95.1	91.8	91.6

CQS: 93.8



Color Parameters:

CCT	CRI	CRI R9	TM30 Rf	TM30 Rg	CQS	x	y	u	v	Δuv
3000 K	96.6	76.4	93.7	100.2	93.8	0.434	0.399	0.251	0.346	-0.0019

TM-30 Details

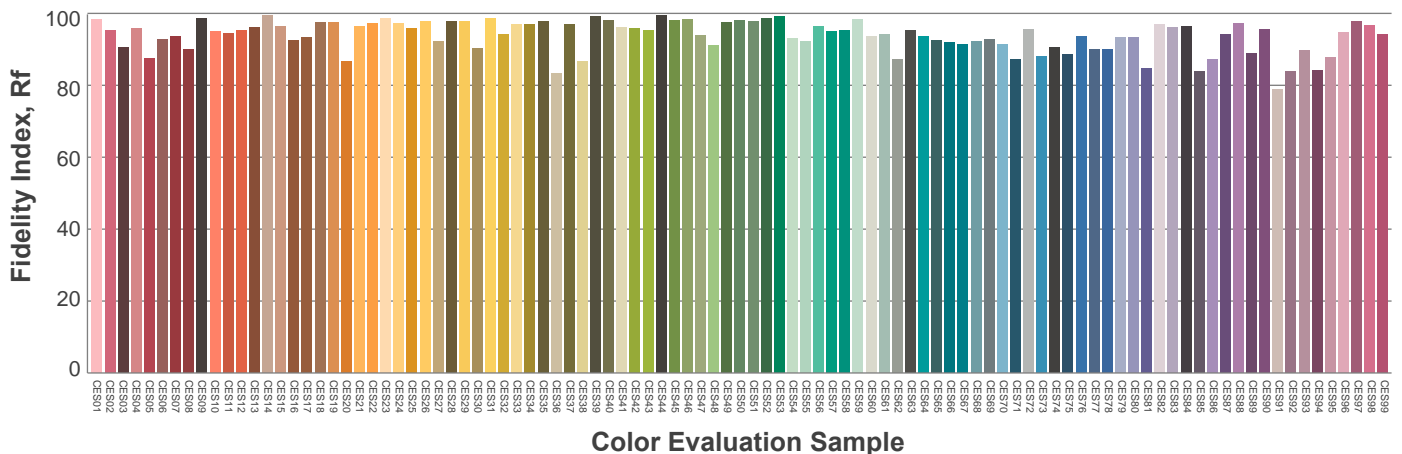
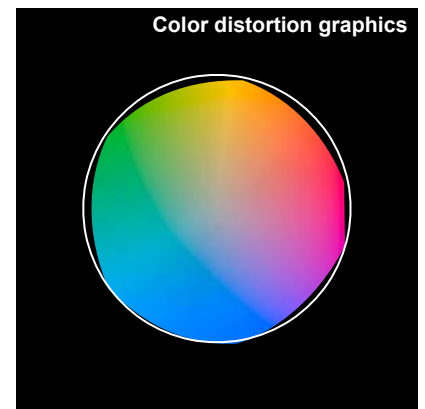
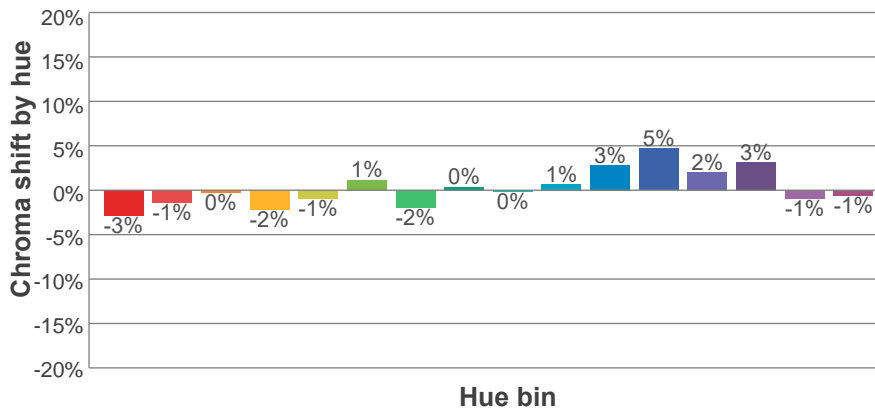
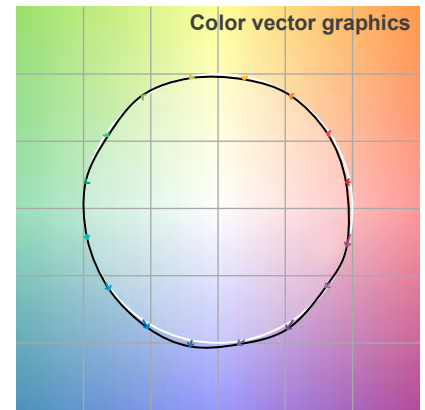
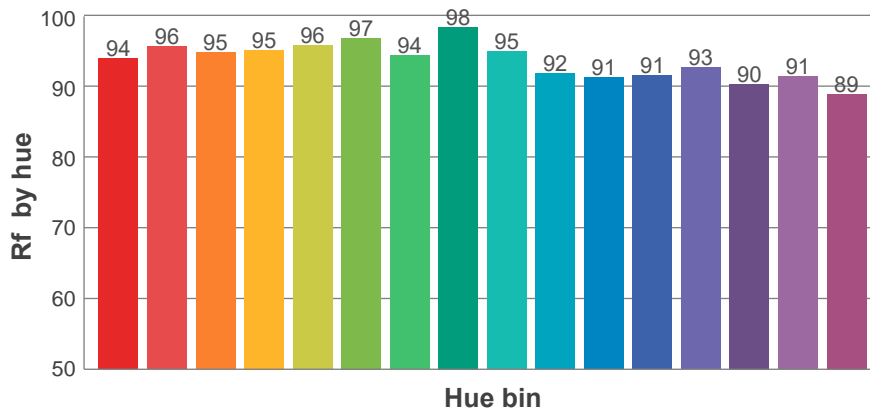
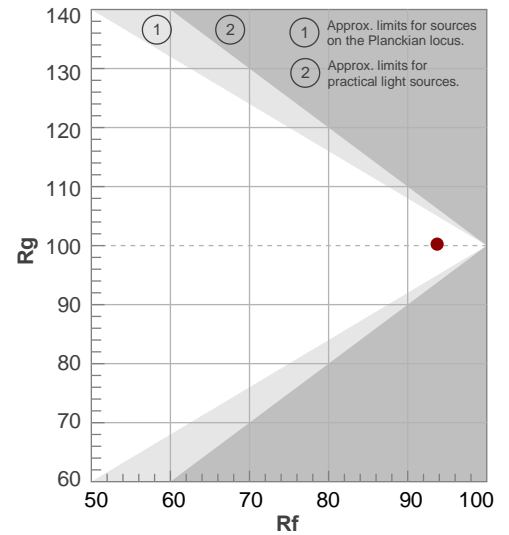
Rf 93.7

Fidelity index Rf

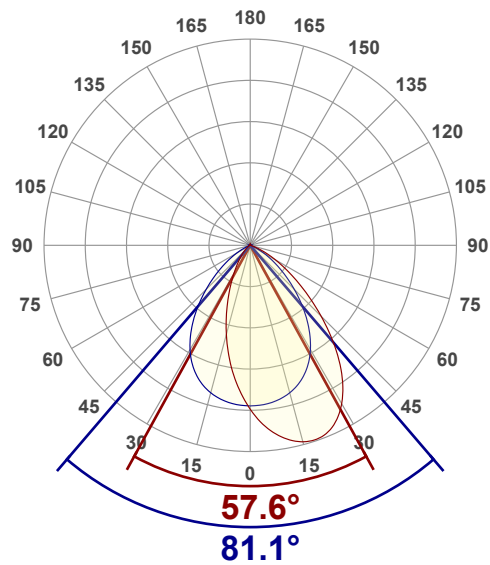
Rg 100.2

Gamut index Rg

Hue Bin	R _f	Shifts (%)	
		Chroma	Hue
1	94	-3%	1%
2	96	-1%	1%
3	95	0%	2%
4	95	-2%	0%
5	96	-1%	1%
6	97	1%	1%
7	94	-2%	1%
8	98	0%	0%
9	95	0%	3%
10	92	1%	5%
11	91	3%	6%
12	91	5%	-1%
13	93	2%	-5%
14	90	3%	-7%
15	91	-1%	-4%
16	89	-1%	-9%



Angular Distribution Through 0° and 90° Planes



Beam Angle: 81.1°W x 57.6°L

Beam Details

