

Photometric / Colorimetric / Electric Report

Fixture Model:

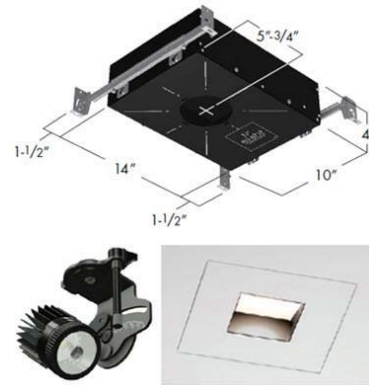
804S-J2S-WD-2-40-DIM1-8-350-FS-P-1-WH-WW-8-20d

Trim Model:

FS-P-1-WH-WW-8

Date:

4/8/2022



Light efficiency:

36 Lumen/Watt

Light quality:

CRI: 96.5

Color temperature:

2873 K

CIE 1931:

**x: 0.442
y: 0.399**

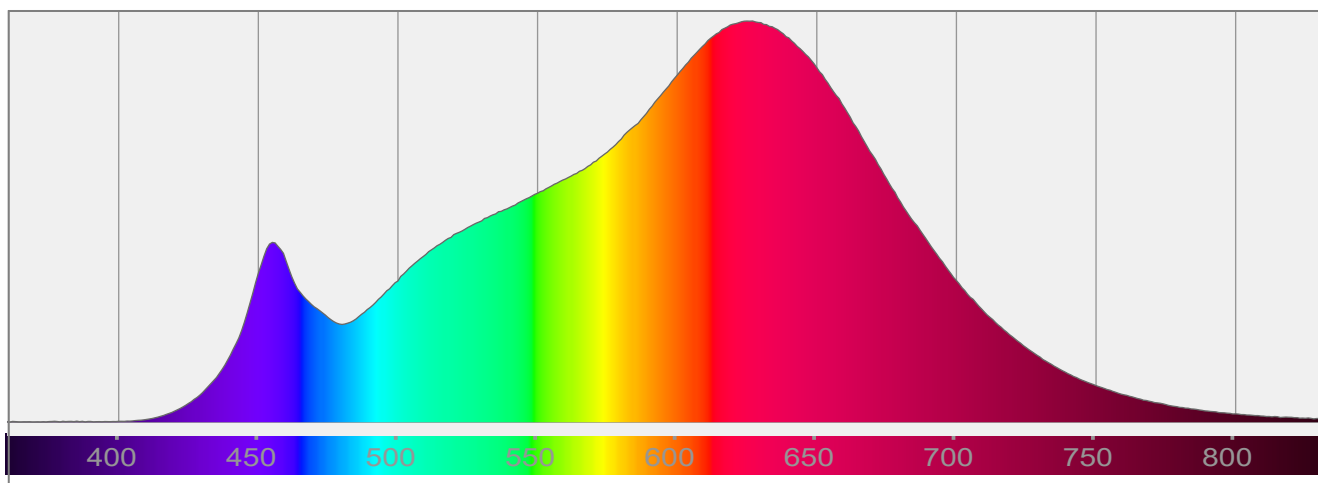
Output: 528 lm

Peak: 350 cd

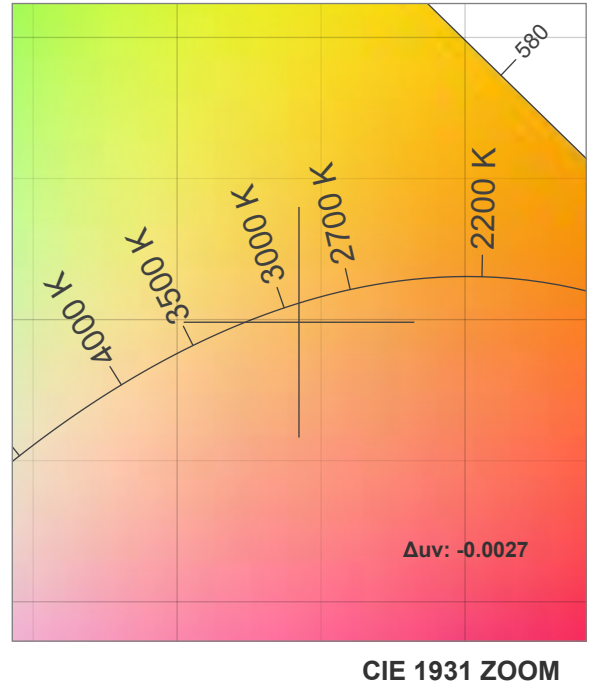
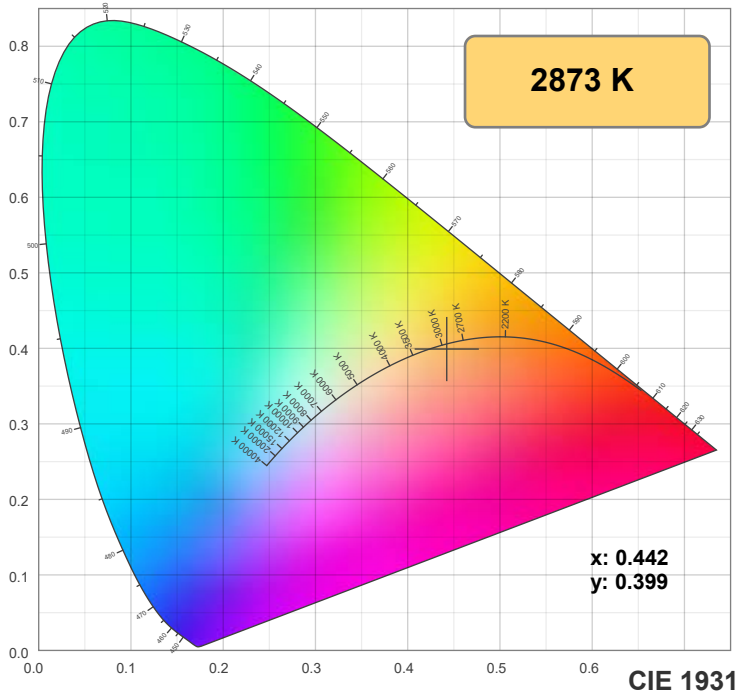
Power: 14.5 W

PF: 0.99

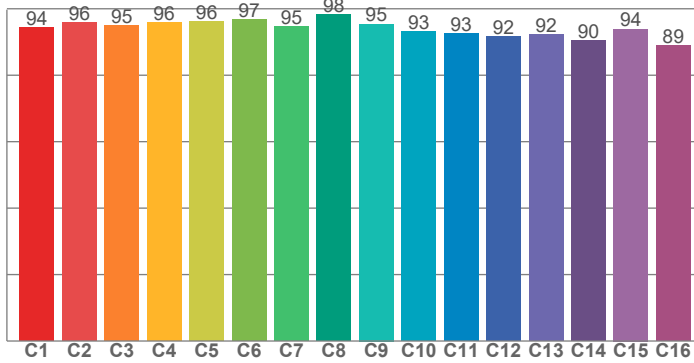
Spectra:



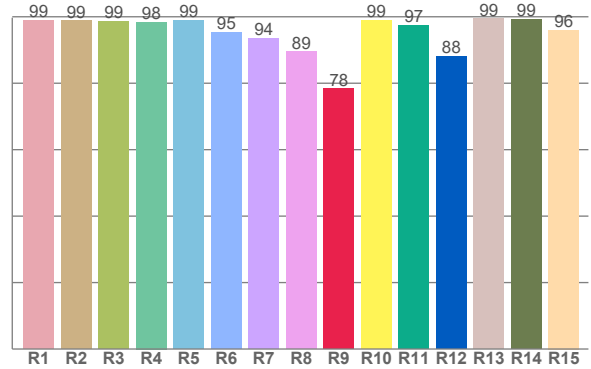
Color Details



TM-30: 94.2



CRI: 96.5 (R1-R8)



CRI R Values:

R1	R2	R3	R4	R5	R6	R7	R8	R9	R10	R11	R12	R13	R14	R15
98.9	98.8	98.7	98.4	99.0	95.4	93.6	89.4	78.3	98.8	97.5	88.0	99.4	99.2	96.0

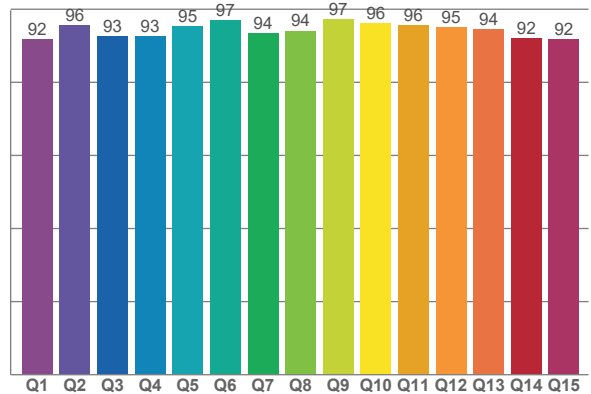
TM30 C Values:

C1	C2	C3	C4	C5	C6	C7	C8	C9	C10	C11	C12	C13	C14	C15	C16
94.3	95.8	95.0	95.8	96.1	96.7	94.6	98.3	95.4	93.1	92.6	91.6	92.1	90.4	93.9	88.8

CQS Q values:

Q1	Q2	Q3	Q4	Q5	Q6	Q7	Q8	Q9	Q10	Q11	Q12	Q13	Q14	Q15
91.7	95.6	92.5	92.7	95.3	97.0	93.5	94.1	97.2	96.2	95.7	95.0	94.4	91.9	91.8

CQS: 93.9



Color Parameters:

CCT	CRI	CRI R9	TM30 Rf	TM30 Rg	CQS	x	y	u	v	Δuv
2873 K	96.5	78.3	94.2	100.4	93.9	0.442	0.399	0.256	0.347	-0.0027

TM-30 Details

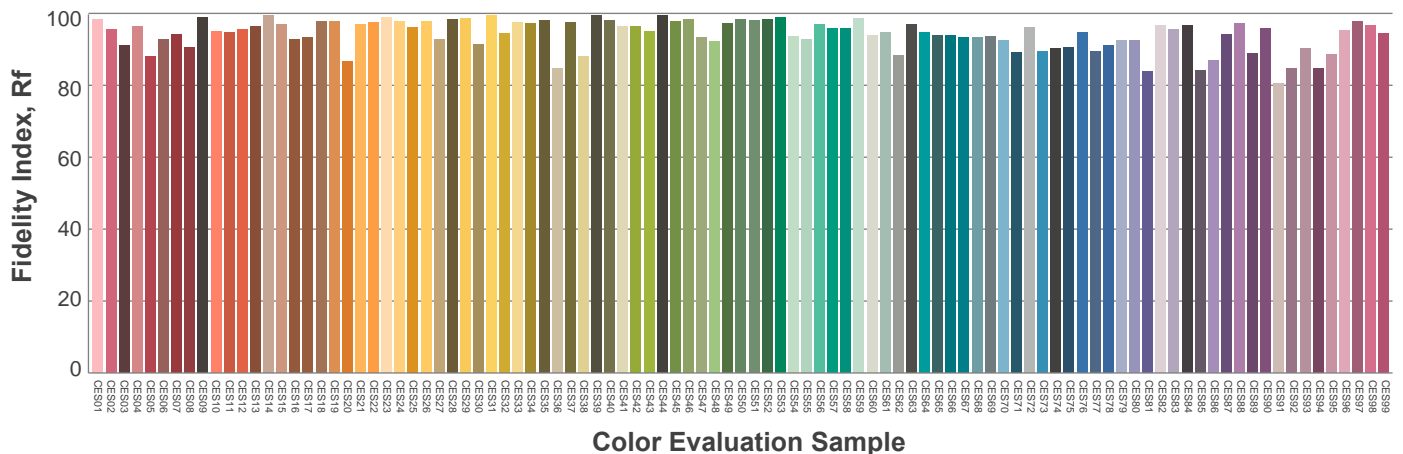
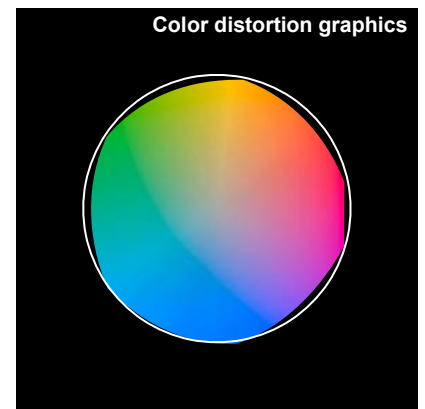
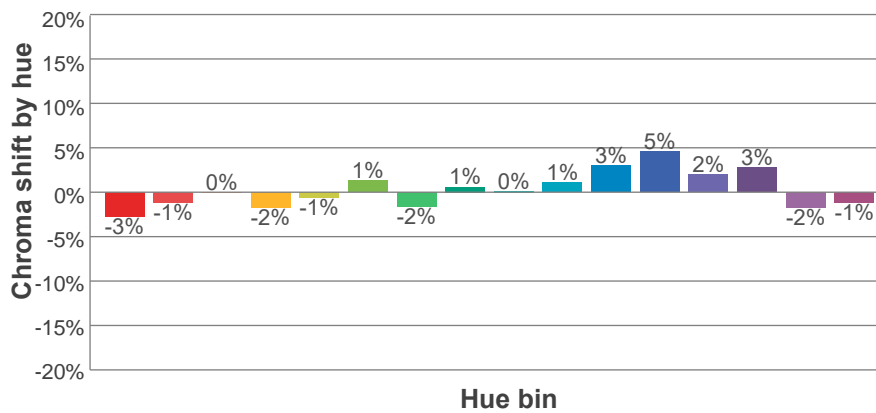
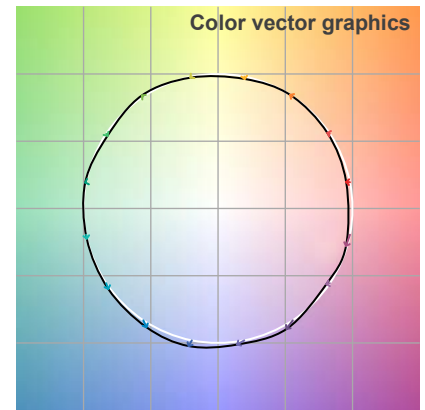
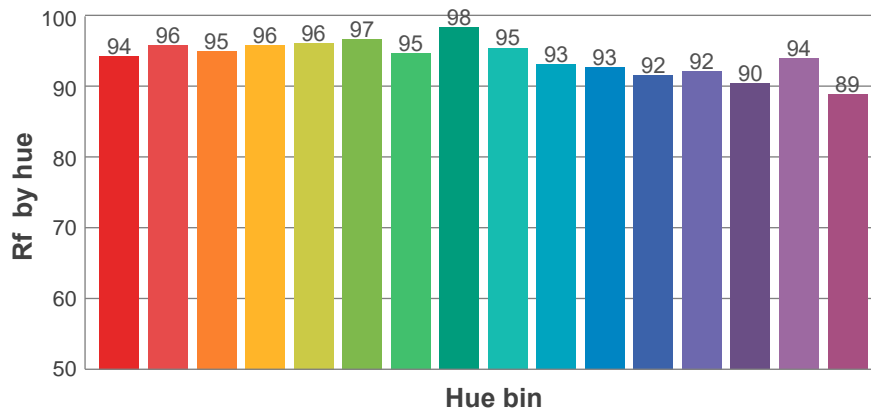
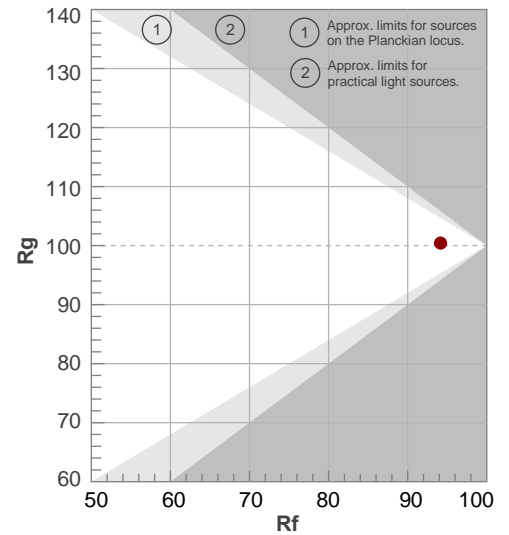
Rf 94.2

Fidelity index Rf

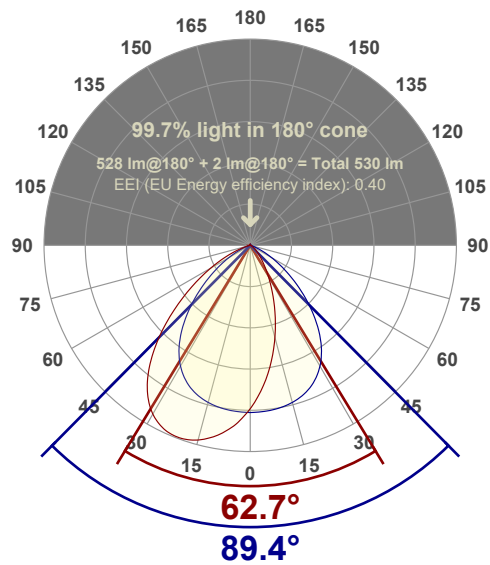
Rg 100.4

Gamut index Rg

Hue Bin	R _f	Shifts (%)	
		Chroma	Hue
1	94	-3%	1%
2	96	-1%	2%
3	95	0%	2%
4	96	-2%	-1%
5	96	-1%	1%
6	97	1%	0%
7	95	-2%	1%
8	98	1%	0%
9	95	0%	3%
10	93	1%	4%
11	93	3%	5%
12	92	5%	-1%
13	92	2%	-6%
14	90	3%	-7%
15	94	-2%	-2%
16	89	-1%	-9%



Angular Distribution Through 0° and 90° Planes



Beam Angle: 89.4°W x 62.7°L

Beam Details

