

## Photometric / Colorimetric / Electric Report

Fixture Model:

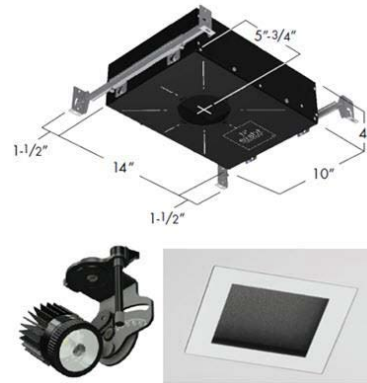
804S-J2S-WD-2-15-DIM1-8-350-FS-LG-P-1-WH-NL

Trim Model:

FS-LG-P-1-WH/NL

Date:

4/8/2022



Light efficiency:

58 Lumen/Watt

Light quality:

CRI: 96.4

Color temperature:

2889 K

CIE 1931:

x: 0.441  
y: 0.399

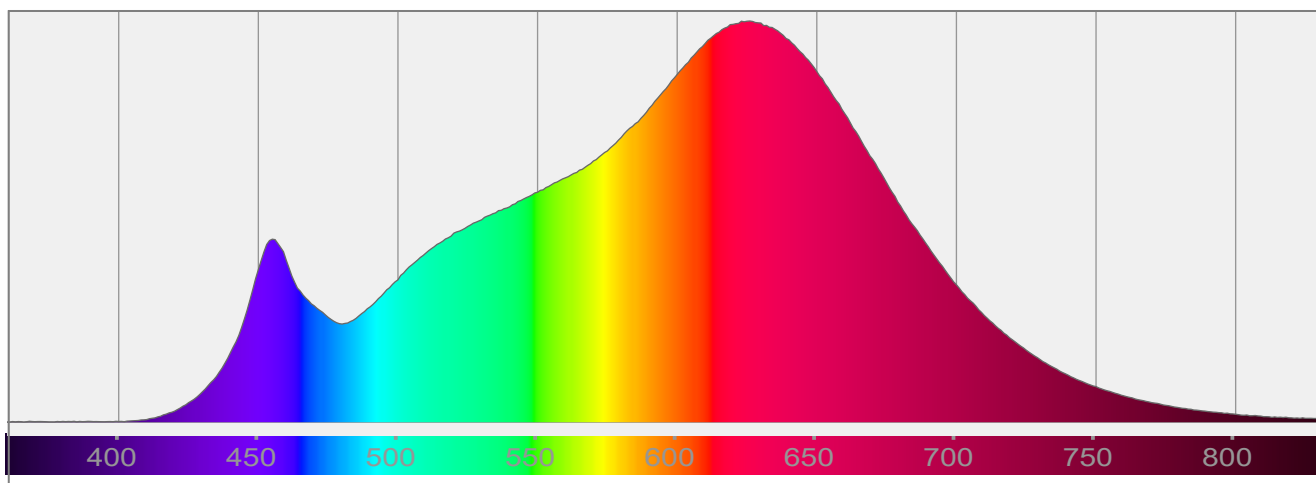
Output: 834 lm

Peak: 3517 cd

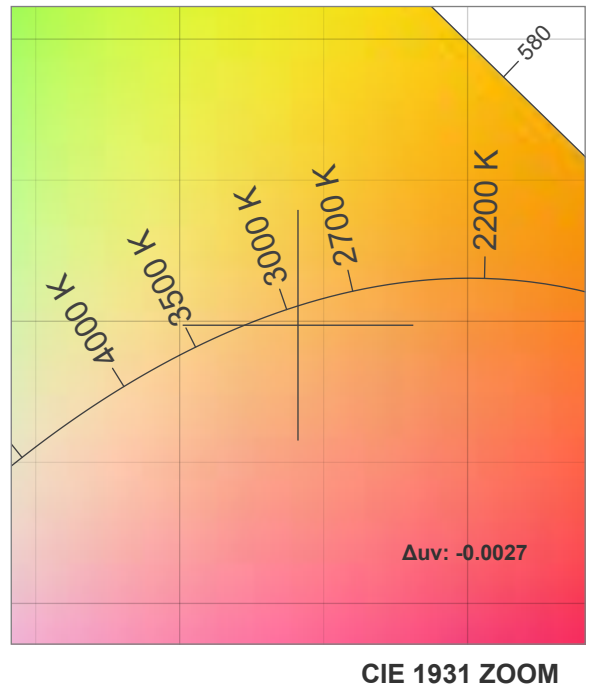
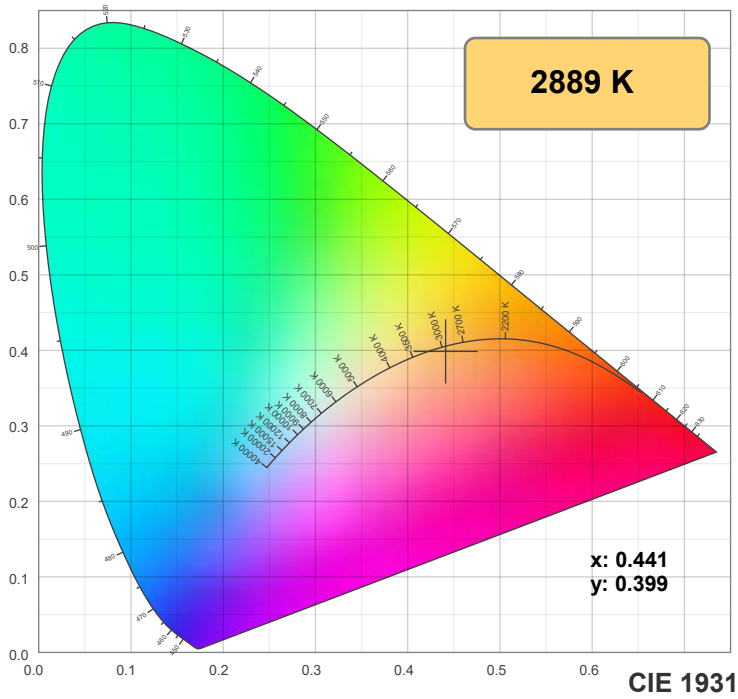
Power: 14.5 W

PF: 0.99

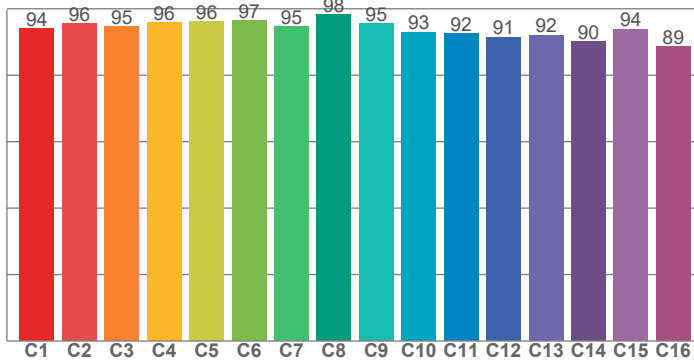
Spectra:



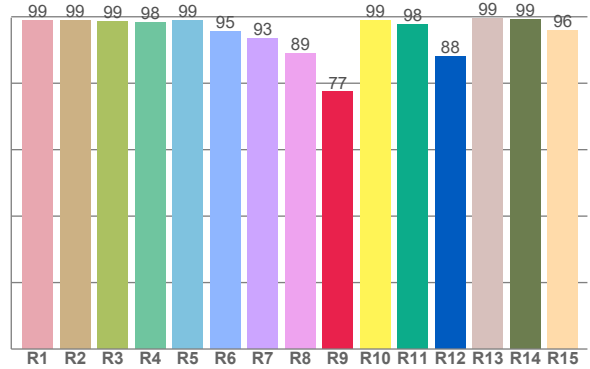
## Color Details



**TM-30: 94.1**



**CRI: 96.4 (R1-R8)**



**CRI R Values:**

R1	R2	R3	R4	R5	R6	R7	R8	R9	R10	R11	R12	R13	R14	R15
98.8	98.8	98.6	98.2	98.9	95.5	93.4	89.0	77.4	99.0	97.6	88.0	99.4	99.2	95.8

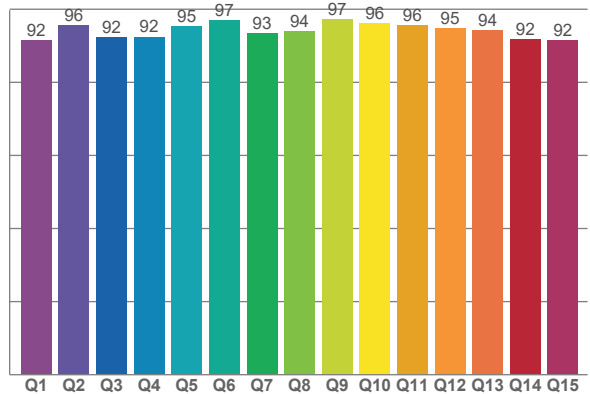
**TM30 C Values:**

C1	C2	C3	C4	C5	C6	C7	C8	C9	C10	C11	C12	C13	C14	C15	C16
94.1	95.6	94.7	95.8	96.1	96.6	94.7	98.3	95.5	93.0	92.5	91.5	92.1	90.2	93.9	88.6

**CQS Q values:**

Q1	Q2	Q3	Q4	Q5	Q6	Q7	Q8	Q9	Q10	Q11	Q12	Q13	Q14	Q15
91.6	95.7	92.3	92.5	95.3	96.9	93.4	94.0	97.3	96.0	95.6	94.8	94.3	91.7	91.6

**CQS: 93.8**



**Color Parameters:**

CCT	CRI	CRI R9	TM30 Rf	TM30 Rg	CQS	x	y	u	v	Δuv
2889 K	96.4	77.4	94.1	100.4	93.8	0.441	0.399	0.256	0.347	-0.0027

# TM-30 Details

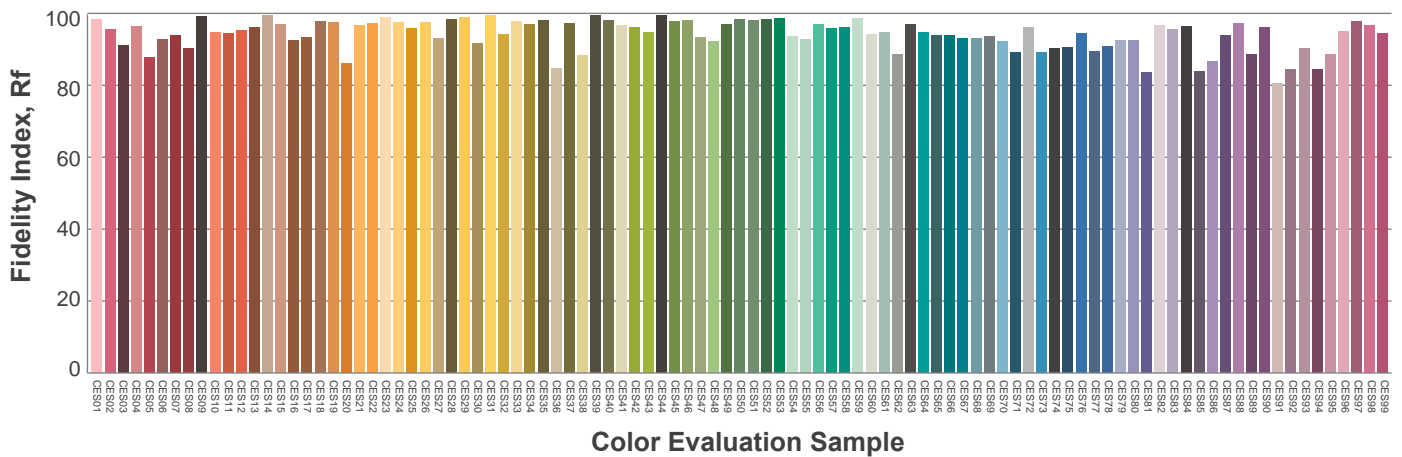
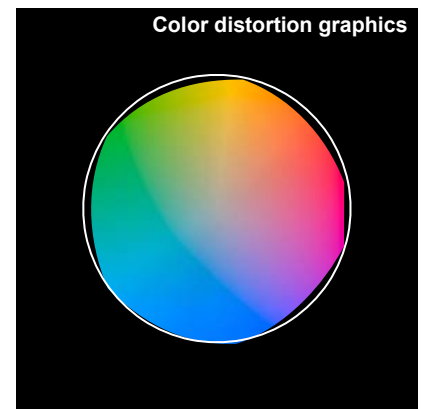
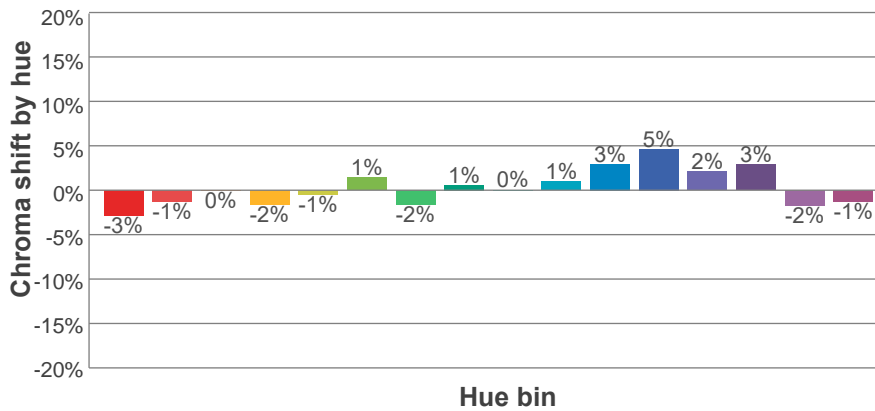
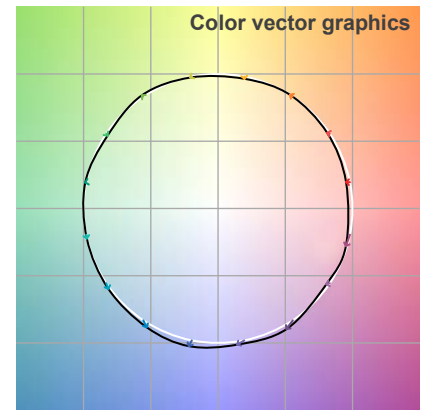
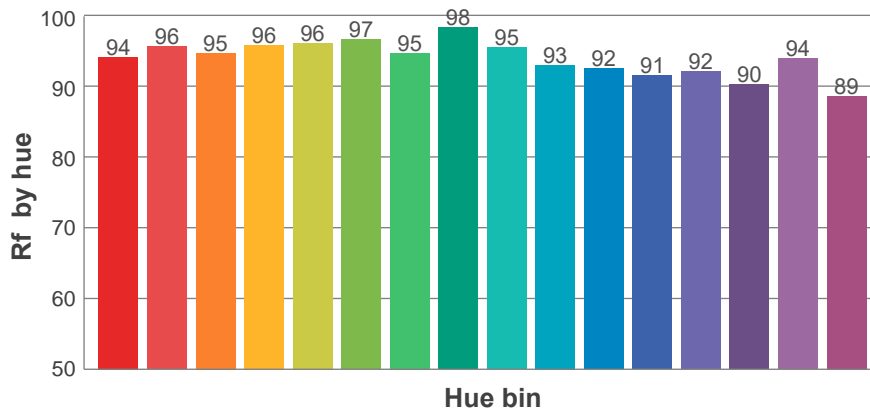
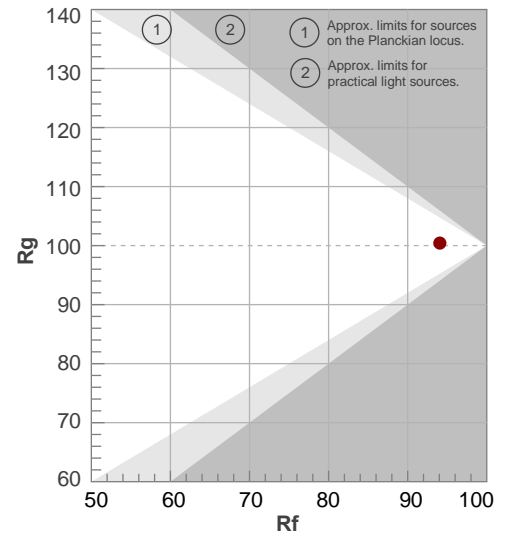
**Rf 94.1**

Fidelity index Rf

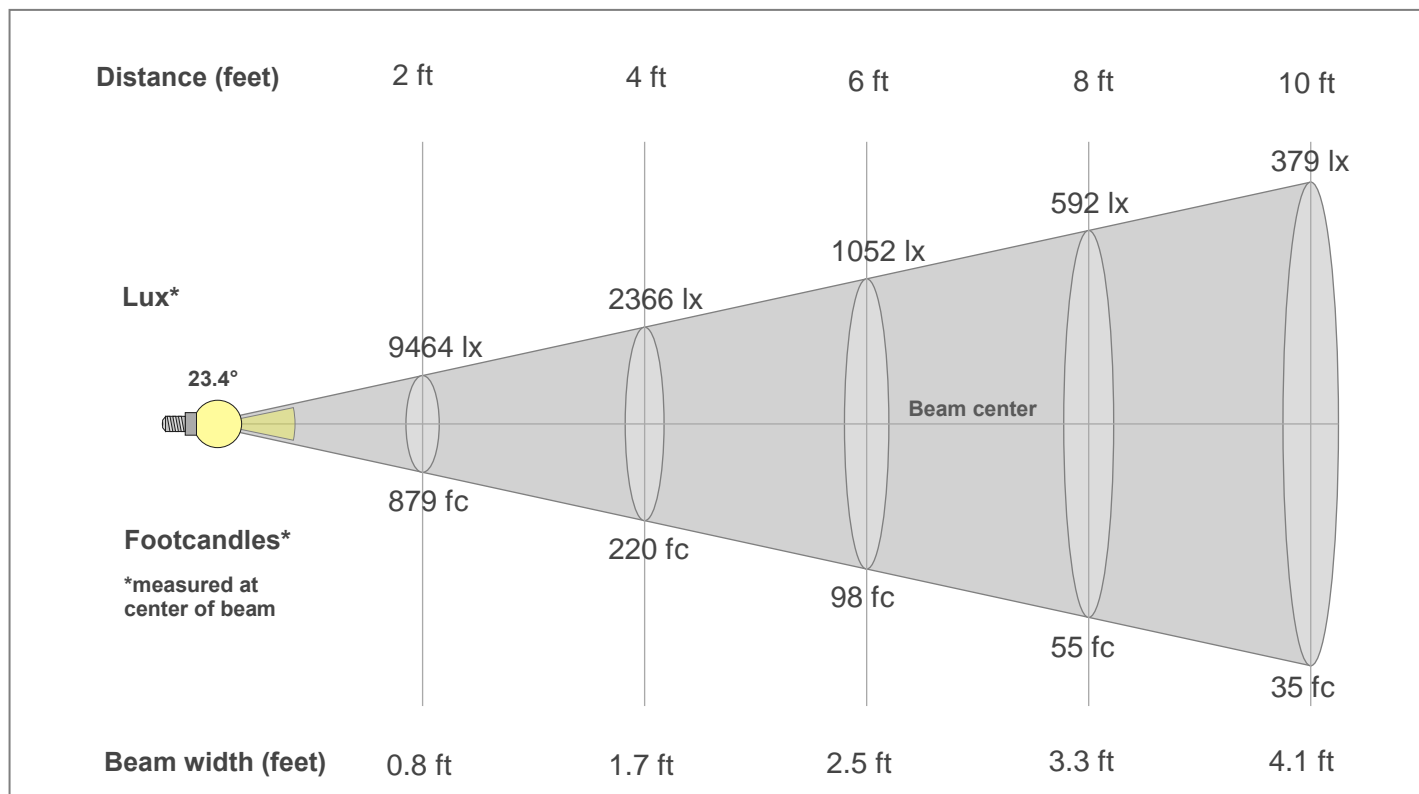
**Rg 100.4**

Gamut index Rg

Hue Bin	R <sub>f</sub>	Shifts (%)	
		Chroma	Hue
1	94	-3%	1%
2	96	-1%	2%
3	95	0%	2%
4	96	-2%	0%
5	96	-1%	1%
6	97	1%	0%
7	95	-2%	1%
8	98	1%	0%
9	95	0%	3%
10	93	1%	4%
11	92	3%	5%
12	91	5%	-1%
13	92	2%	-6%
14	90	3%	-7%
15	94	-2%	-2%
16	89	-1%	-9%



## Beam Details



### Beam Intensities from 1-20m

1m	2m	3m	4m	5m	6m	7m	8m	9m	10m	11m	12m	13m	14m	15m	16m	17m	18m	19m	20m
3.3ft	6.6ft	9.8ft	13.1ft	16.4ft	19.7ft	23ft	26.2ft	29.5ft	32.8ft	36.1ft	39.4ft	42.7ft	45.9ft	49.2ft	52.5ft	55.8ft	59.1ft	62.3ft	65.6ft
3517lx	879lx	391lx	220lx	141lx	98lx	72lx	55lx	43lx	35lx	29lx	24lx	21lx	18lx	16lx	14lx	12lx	11lx	10lx	9lx
326.7fc	81.7fc	36.3fc	20.4fc	13.1fc	9.1fc	6.7fc	5.1fc	4fc	3.3fc	2.7fc	2.3fc	1.9fc	1.7fc	1.5fc	1.3fc	1.1fc	1fc	0.9fc	0.8fc

### Intensities in 0° c-plane

0°	2°	4°	6°	8°	10°	12°	14°	16°	18°	20°	22°	24°	26°	28°	30°	32°	34°	36°	38°
3517	3461	3286	2981	2577	2127	1689	1311	1014	791	619	485	380	298	237	189	148	114	84	61
100%	98%	93%	85%	73%	60%	48%	37%	29%	22%	18%	14%	11%	8%	7%	5%	4%	3%	2%	2%

### Intensities in 90° c-plane

0°	2°	4°	6°	8°	10°	12°	14°	16°	18°	20°	22°	24°	26°	28°	30°	32°	34°	36°	38°
3517	3461	3286	2981	2577	2127	1689	1311	1014	791	619	485	380	298	237	189	148	114	84	61
100%	98%	93%	85%	73%	60%	48%	37%	29%	22%	18%	14%	11%	8%	7%	5%	4%	3%	2%	2%

### Intensities in 180° c-plane

0°	2°	4°	6°	8°	10°	12°	14°	16°	18°	20°	22°	24°	26°	28°	30°	32°	34°	36°	38°
3517	3461	3286	2981	2577	2127	1689	1311	1014	791	619	485	380	298	237	189	148	114	84	61
100%	98%	93%	85%	73%	60%	48%	37%	29%	22%	18%	14%	11%	8%	7%	5%	4%	3%	2%	2%

### Intensities in 270° c-plane

0°	2°	4°	6°	8°	10°	12°	14°	16°	18°	20°	22°	24°	26°	28°	30°	32°	34°	36°	38°
3517	3461	3286	2981	2577	2127	1689	1311	1014	791	619	485	380	298	237	189	148	114	84	61
100%	98%	93%	85%	73%	60%	48%	37%	29%	22%	18%	14%	11%	8%	7%	5%	4%	3%	2%	2%

Beam angle 50%	Field angle 10%	Cut-off angle 2.5%	Intensity ratio in 120°	Intensity ratio in 90°
23.4°	49.3°	71.4°	99.5%	99.0%