

## Photometric / Colorimetric / Electric Report

Fixture Model:

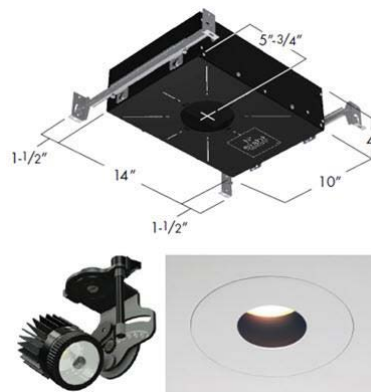
804S-J2S-WD-2-40-DIM1-8-350-FR-P-1-WH

Trim Model:

FR-P-1-WH

Date:

3/30/2022



Light efficiency:

48 Lumen/Watt

Light quality:

CRI: 96.5

Color temperature:

2880 K

CIE 1931:

x: 0.442  
y: 0.400

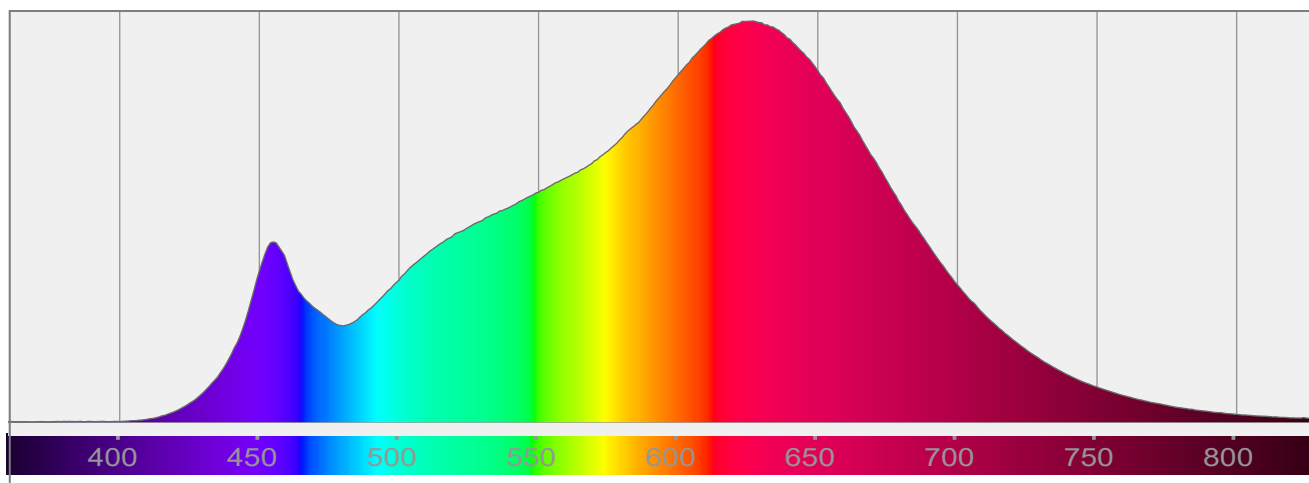
Output: 691 lm

Peak: 1662 cd

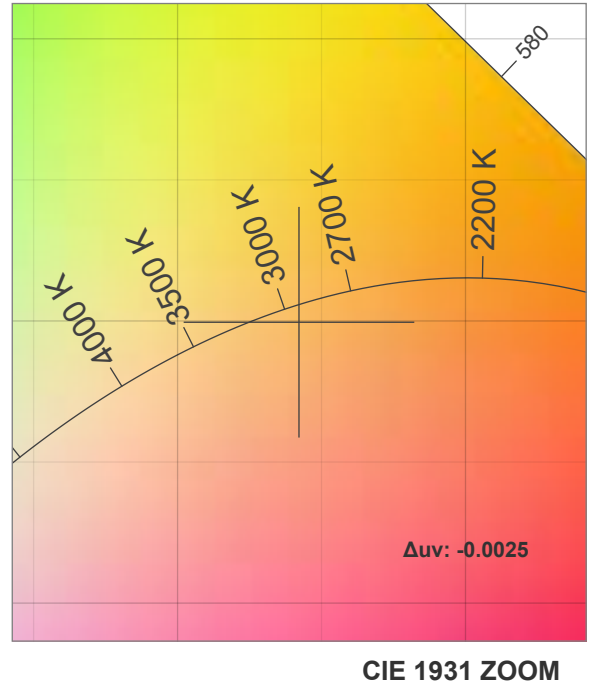
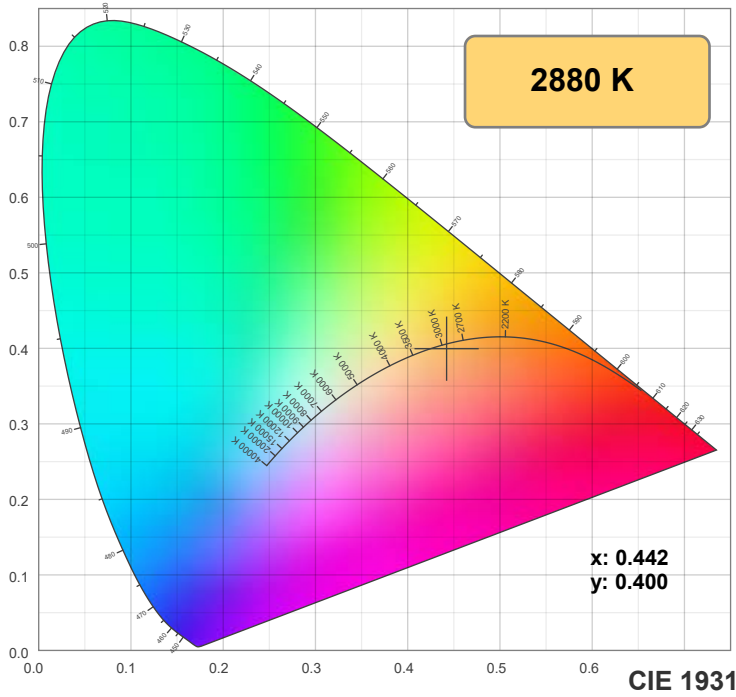
Power: 14.5 W

PF: 1.0

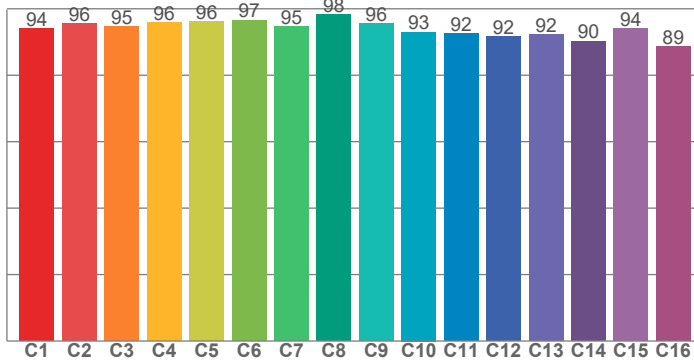
Spectra:



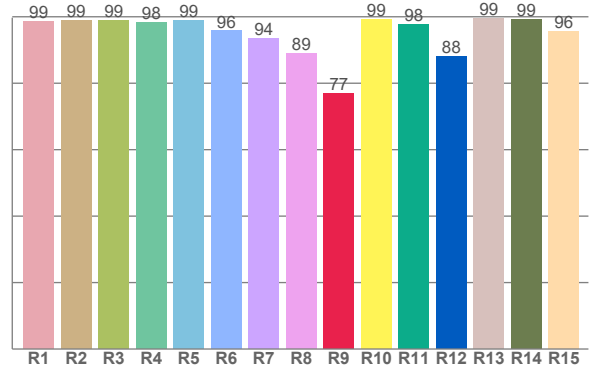
## Color Details



**TM-30: 94.1**



**CRI: 96.5 (R1-R8)**



**CRI R Values:**

R1	R2	R3	R4	R5	R6	R7	R8	R9	R10	R11	R12	R13	R14	R15
98.7	99.0	98.8	98.2	98.8	95.7	93.6	89.0	77.0	99.1	97.7	88.1	99.5	99.1	95.6

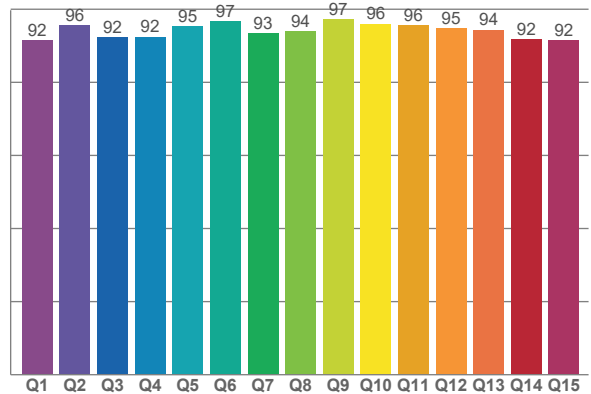
**TM30 C Values:**

C1	C2	C3	C4	C5	C6	C7	C8	C9	C10	C11	C12	C13	C14	C15	C16
94.1	95.6	94.7	95.8	96.1	96.6	94.7	98.3	95.5	93.0	92.5	91.5	92.1	90.3	93.9	88.6

**CQS Q values:**

Q1	Q2	Q3	Q4	Q5	Q6	Q7	Q8	Q9	Q10	Q11	Q12	Q13	Q14	Q15
91.5	95.7	92.3	92.5	95.3	96.8	93.5	94.1	97.3	96.0	95.6	94.9	94.4	91.7	91.5

**CQS: 93.8**



**Color Parameters:**

CCT	CRI	CRI R9	TM30 Rf	TM30 Rg	CQS	x	y	u	v	Δuv
2880 K	96.5	77.0	94.1	100.4	93.8	0.442	0.400	0.256	0.347	-0.0025

# TM-30 Details

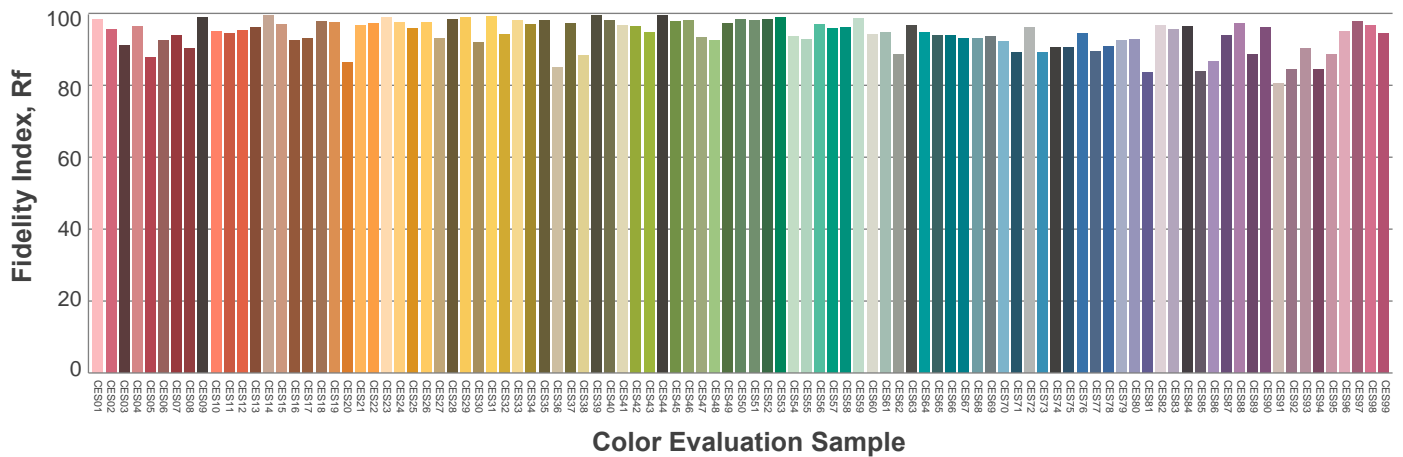
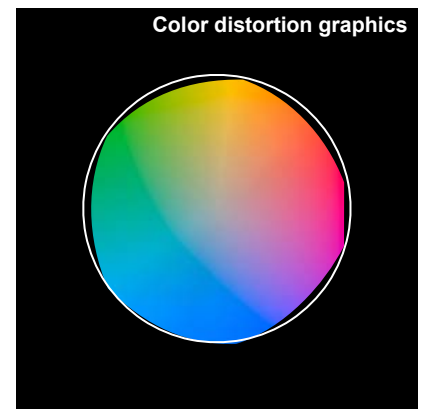
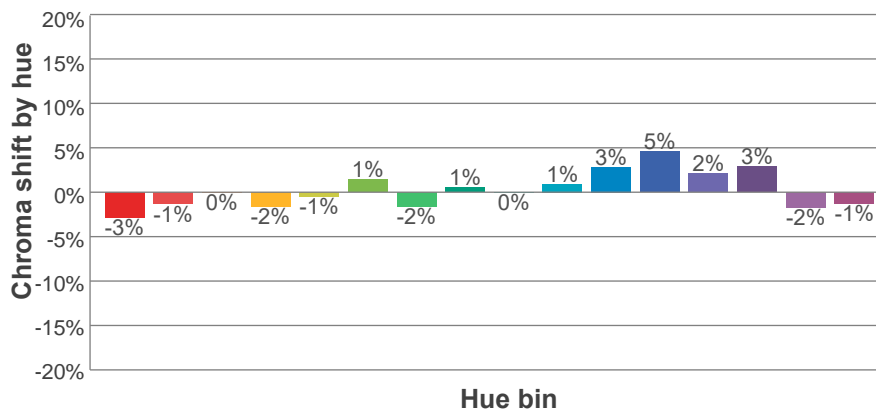
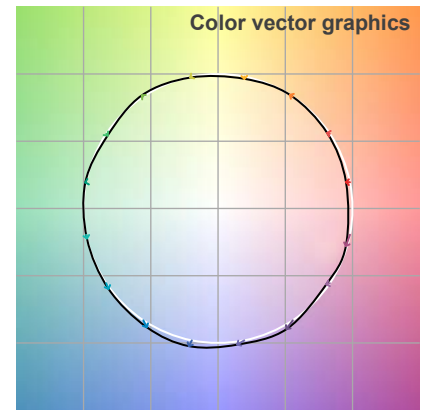
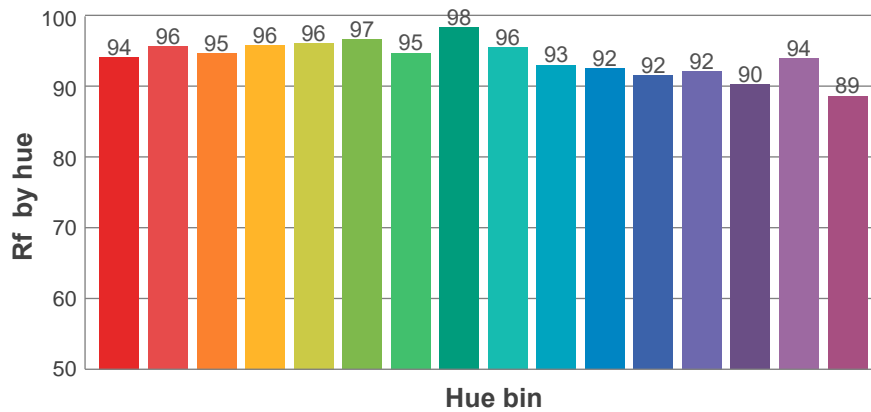
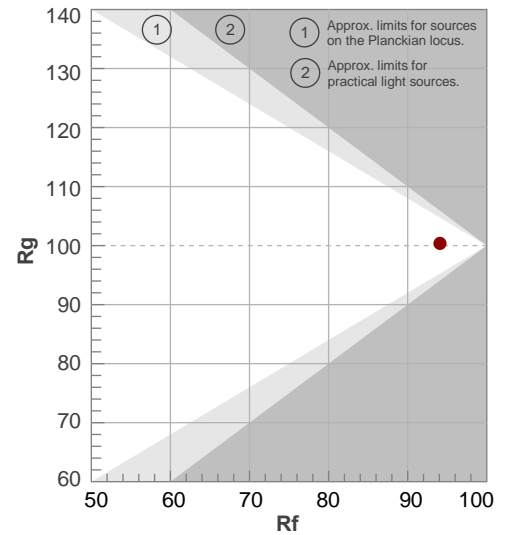
**Rf 94.1**

Fidelity index Rf

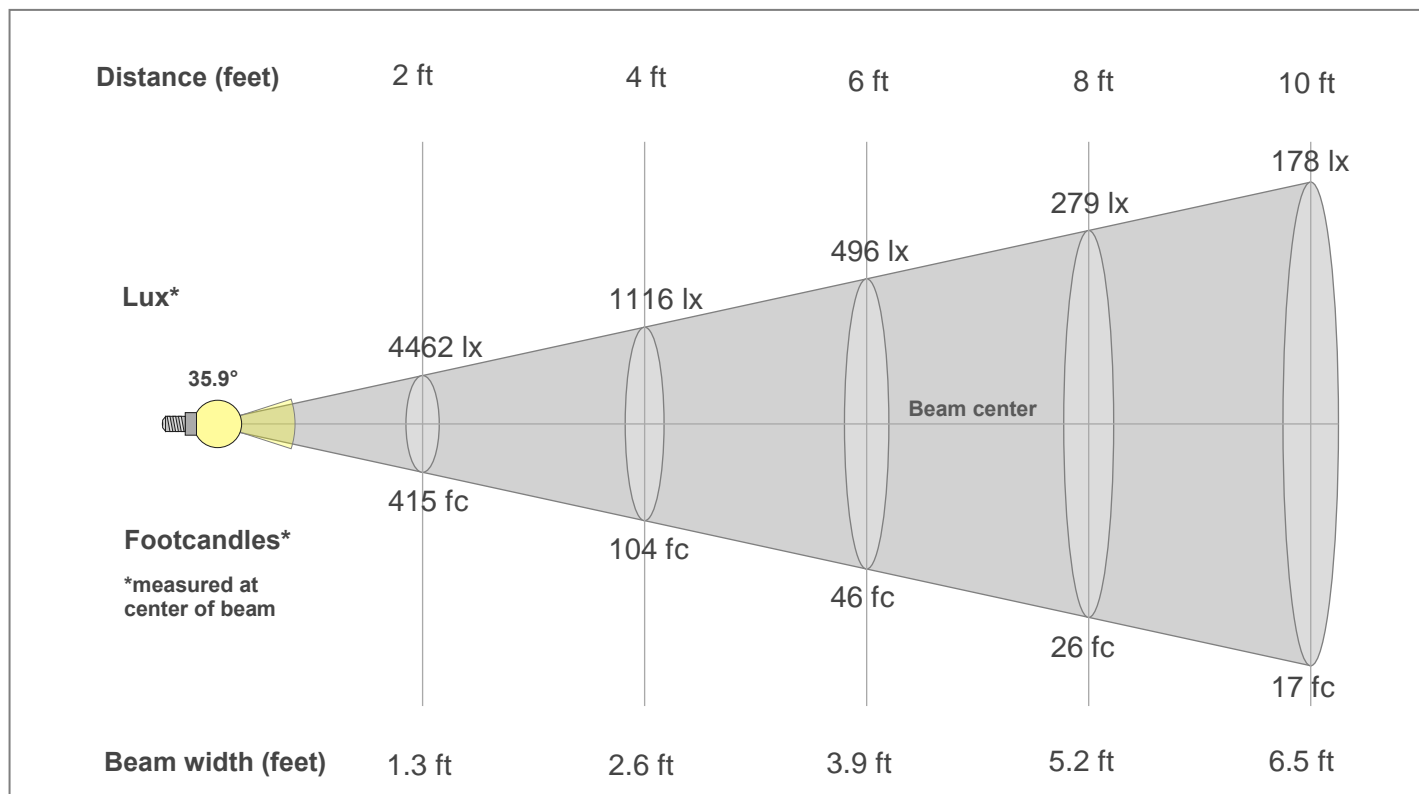
**Rg 100.4**

Gamut index Rg

Hue Bin	R <sub>f</sub>	Shifts (%)	
		Chroma	Hue
1	94	-3%	1%
2	96	-1%	2%
3	95	0%	2%
4	96	-2%	0%
5	96	-1%	1%
6	97	1%	0%
7	95	-2%	0%
8	98	1%	0%
9	96	0%	3%
10	93	1%	4%
11	92	3%	5%
12	92	5%	-1%
13	92	2%	-6%
14	90	3%	-7%
15	94	-2%	-2%
16	89	-1%	-9%



## Beam Details



### Beam Intensities from 1-20m

1m	2m	3m	4m	5m	6m	7m	8m	9m	10m	11m	12m	13m	14m	15m	16m	17m	18m	19m	20m
3.3ft	6.6ft	9.8ft	13.1ft	16.4ft	19.7ft	23ft	26.2ft	29.5ft	32.8ft	36.1ft	39.4ft	42.7ft	45.9ft	49.2ft	52.5ft	55.8ft	59.1ft	62.3ft	65.6ft
1658lx	415lx	184lx	104lx	66lx	46lx	34lx	26lx	20lx	17lx	14lx	12lx	10lx	8lx	7lx	6lx	6lx	5lx	5lx	4lx
154.1fc	38.5fc	17.1fc	9.6fc	6.2fc	4.3fc	3.1fc	2.4fc	1.9fc	1.5fc	1.3fc	1.1fc	0.9fc	0.8fc	0.7fc	0.6fc	0.5fc	0.5fc	0.4fc	0.4fc

### Intensities in 0° c-plane

0°	2°	4°	6°	8°	10°	12°	14°	16°	18°	20°	22°	24°	26°	28°	30°	32°	34°	36°	38°
1658	1650	1611	1549	1468	1366	1251	1124	979	828	681	545	428	329	255	196	150	116	89	68
100%	99%	97%	93%	89%	82%	75%	68%	59%	50%	41%	33%	26%	20%	15%	12%	9%	7%	5%	4%

### Intensities in 90° c-plane

0°	2°	4°	6°	8°	10°	12°	14°	16°	18°	20°	22°	24°	26°	28°	30°	32°	34°	36°	38°
1658	1645	1607	1546	1462	1362	1250	1118	974	820	672	537	419	326	252	195	152	118	91	69
100%	99%	97%	93%	88%	82%	75%	67%	59%	49%	41%	32%	25%	20%	15%	12%	9%	7%	5%	4%

### Intensities in 180° c-plane

0°	2°	4°	6°	8°	10°	12°	14°	16°	18°	20°	22°	24°	26°	28°	30°	32°	34°	36°	38°
1658	1650	1611	1549	1468	1366	1251	1124	979	828	681	545	428	329	255	196	150	116	89	68
100%	99%	97%	93%	89%	82%	75%	68%	59%	50%	41%	33%	26%	20%	15%	12%	9%	7%	5%	4%

### Intensities in 270° c-plane

0°	2°	4°	6°	8°	10°	12°	14°	16°	18°	20°	22°	24°	26°	28°	30°	32°	34°	36°	38°
1658	1645	1607	1546	1462	1362	1250	1118	974	820	672	537	419	326	252	195	152	118	91	69
100%	99%	97%	93%	88%	82%	75%	67%	59%	49%	41%	32%	25%	20%	15%	12%	9%	7%	5%	4%

Beam angle 50%	Field angle 10%	Cut-off angle 2.5%	Intensity ratio in 120°	Intensity ratio in 90°
35.9°	62.5°	82.6°	99.6%	98.8%