

## Photometric / Colorimetric / Electric Report

Fixture Model:

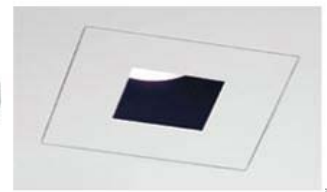
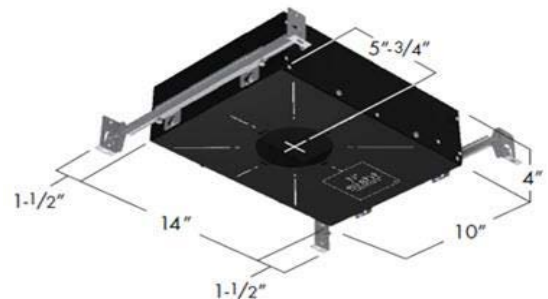
804S-J2S-HI-15-DIM1-8-1400-FS-P-1-WH

Trim Model:

FS-P-1-WH

Date:

4/1/2022



Light efficiency:

62 Lumen/Watt

Light quality:

CRI: 93.3

Color temperature:

2999 K

CIE 1931:

x: 0.439  
y: 0.408

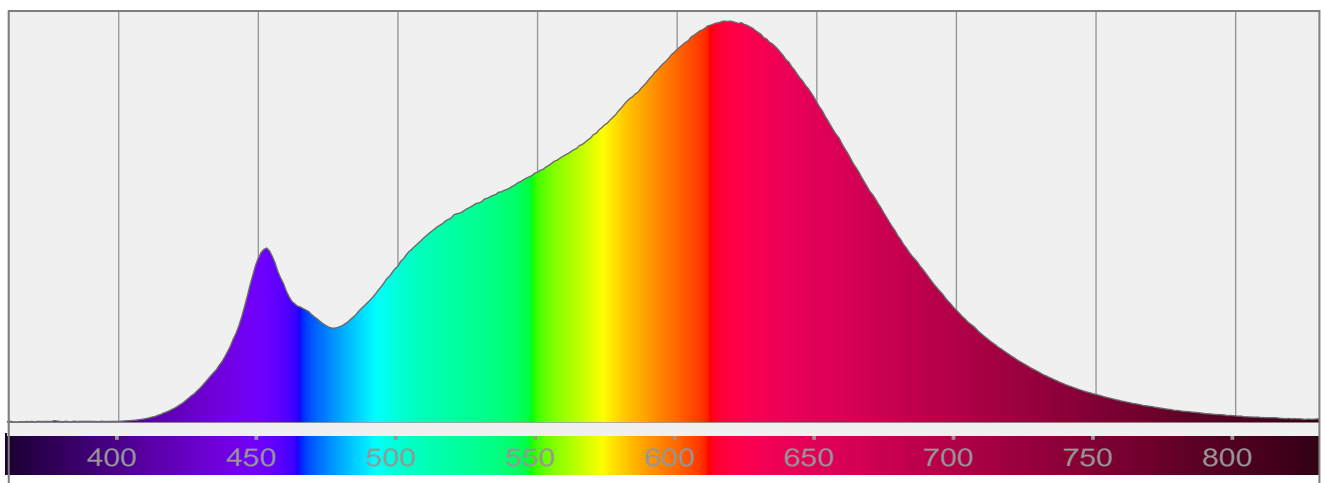
Output: 1227 lm

Peak: 7456 cd

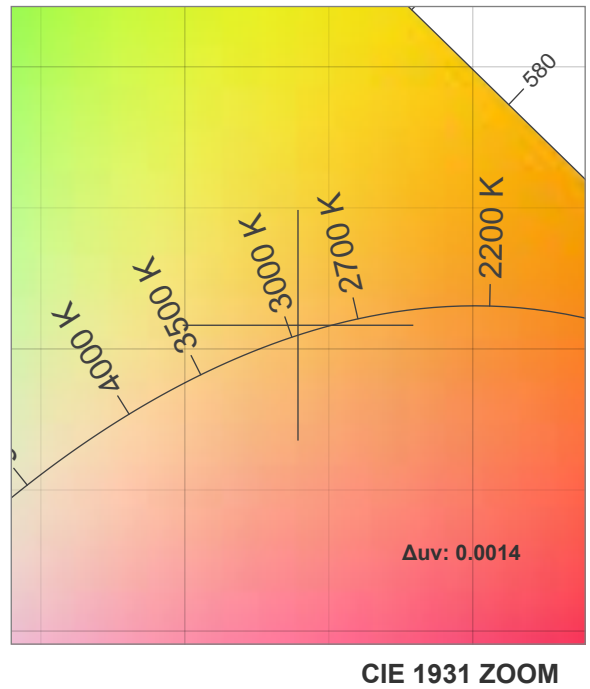
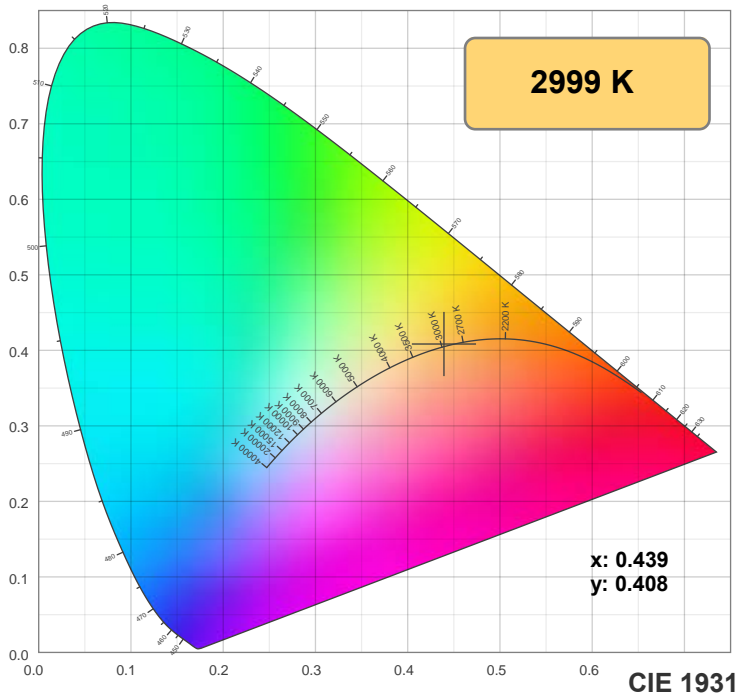
Power: 19.8 W

PF: 0.99

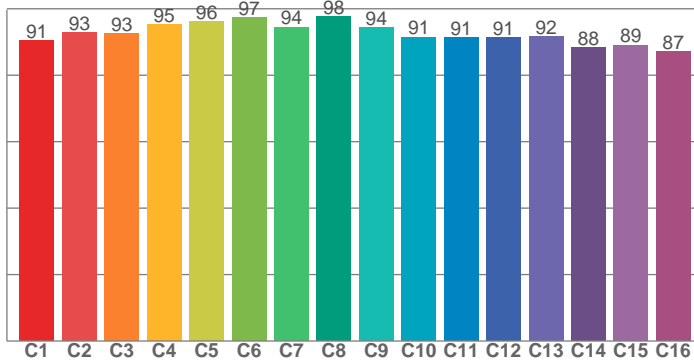
Spectra:



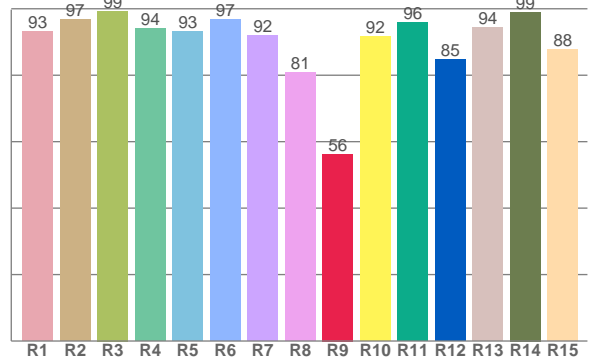
## Color Details



TM-30: 92.7



CRI: 93.3 (R1-R8)



CRI R Values:

R1	R2	R3	R4	R5	R6	R7	R8	R9	R10	R11	R12	R13	R14	R15
93.3	96.7	99.3	94.1	93.3	96.8	92.0	80.9	56.3	91.8	95.8	84.7	94.3	99.0	87.9

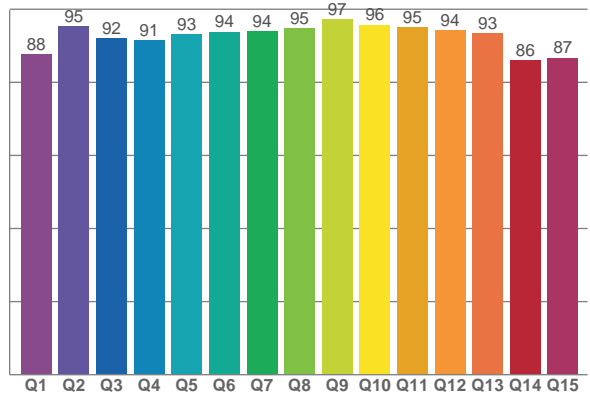
TM30 C Values:

C1	C2	C3	C4	C5	C6	C7	C8	C9	C10	C11	C12	C13	C14	C15	C16
90.5	92.8	92.6	95.3	96.2	97.3	94.5	97.6	94.4	91.5	91.3	91.3	91.6	88.3	89.1	87.1

CQS Q values:

Q1	Q2	Q3	Q4	Q5	Q6	Q7	Q8	Q9	Q10	Q11	Q12	Q13	Q14	Q15
87.8	95.4	92.0	91.4	93.1	93.8	94.1	94.8	97.3	95.7	95.0	94.3	93.3	86.1	86.7

CQS: 91.9



Color Parameters:

CCT	CRI	CRI R9	TM30 Rf	TM30 Rg	CQS	x	y	u	v	Δuv
2999 K	93.3	56.3	92.7	98.0	91.9	0.439	0.408	0.250	0.349	0.0014

# TM-30 Details

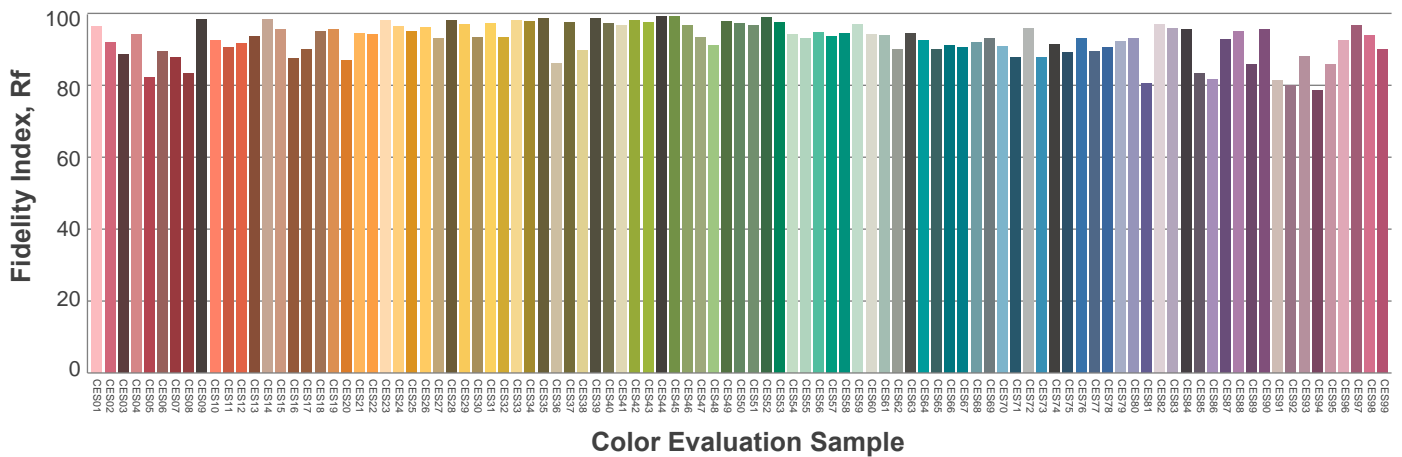
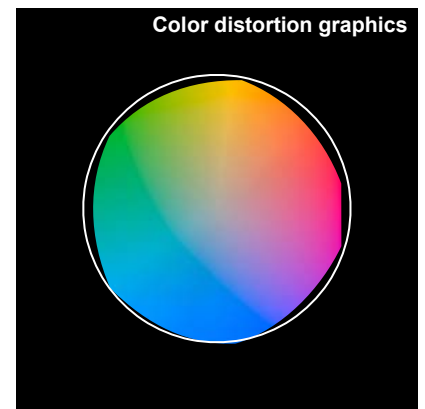
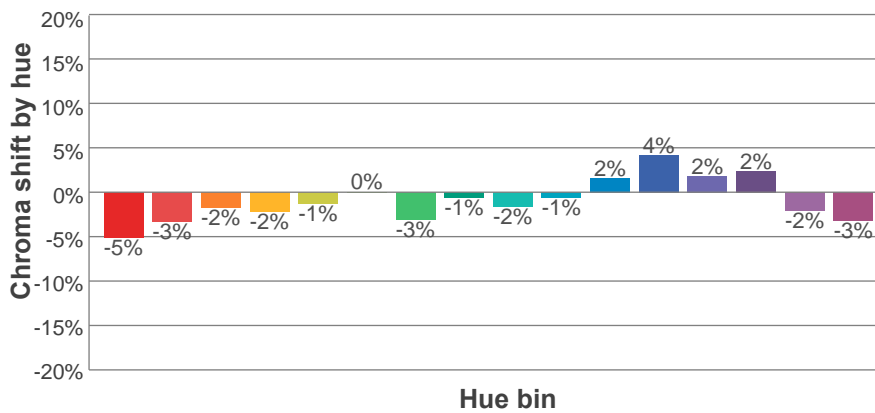
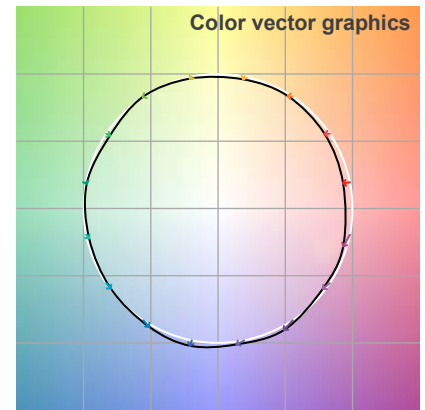
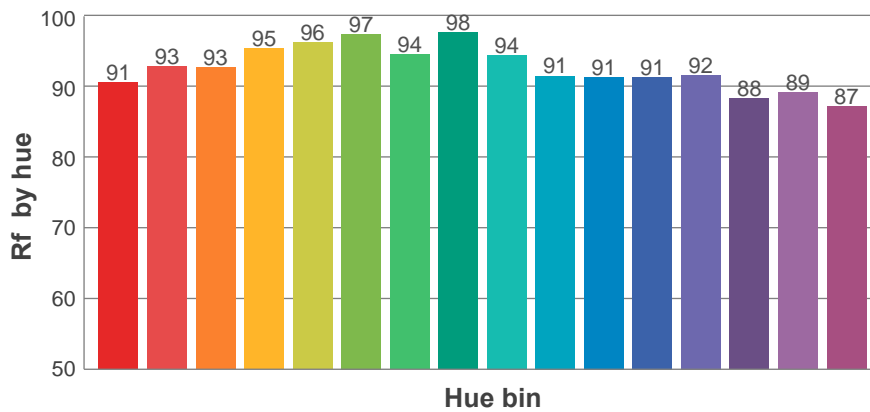
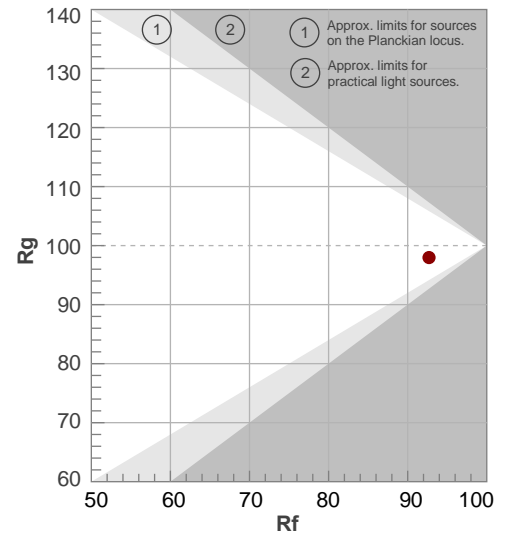
**Rf 92.7**

Fidelity index Rf

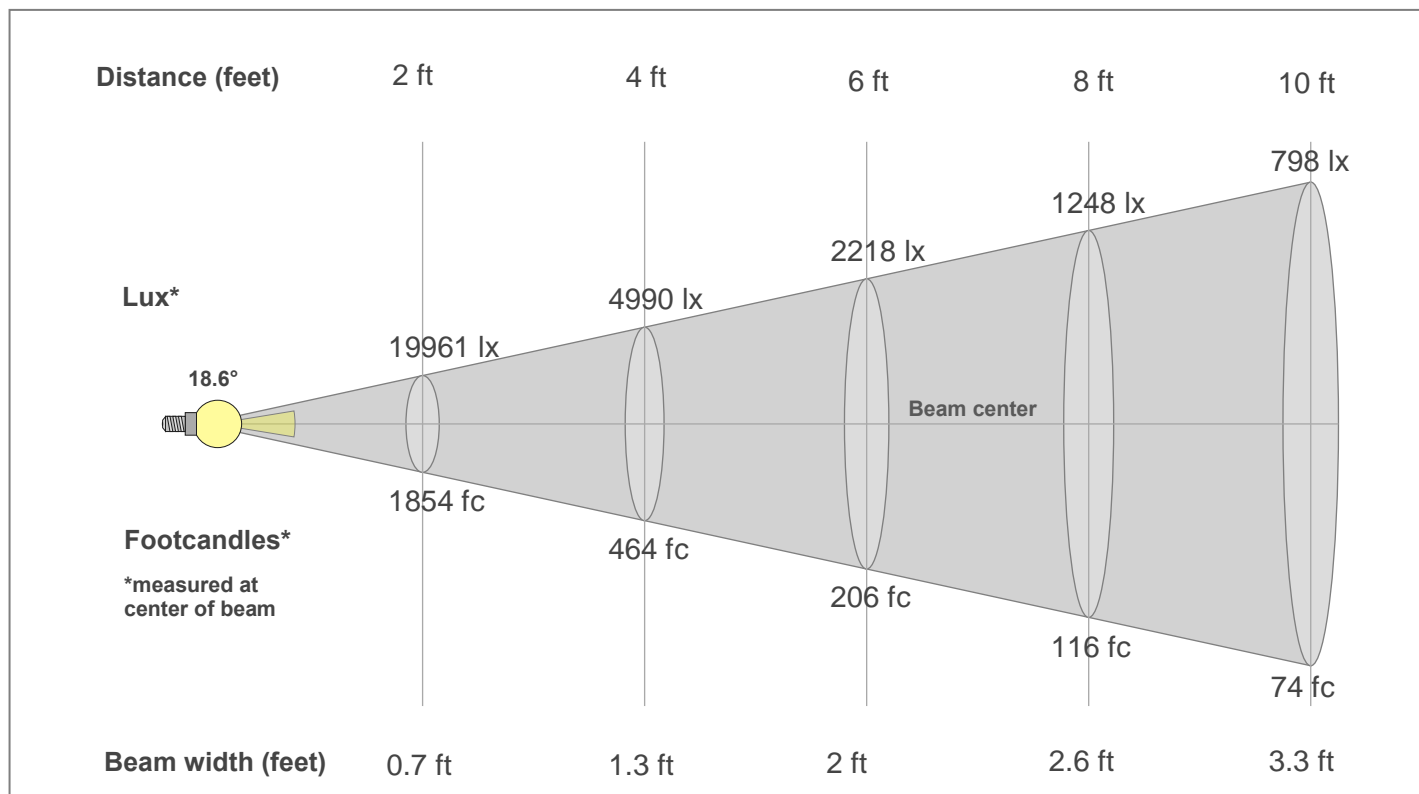
**Rg 98.0**

Gamut index Rg

Hue Bin	R <sub>f</sub>	Shifts (%)	
		Chroma	Hue
1	91	-5%	0%
2	93	-3%	2%
3	93	-2%	3%
4	95	-2%	0%
5	96	-1%	2%
6	97	0%	0%
7	94	-3%	-1%
8	98	-1%	1%
9	94	-2%	3%
10	91	-1%	5%
11	91	2%	6%
12	91	4%	-1%
13	92	2%	-6%
14	88	2%	-9%
15	89	-2%	-6%
16	87	-3%	-9%



## Beam Details



### Beam Intensities from 1-20m

1m	2m	3m	4m	5m	6m	7m	8m	9m	10m	11m	12m	13m	14m	15m	16m	17m	18m	19m	20m
3.3ft	6.6ft	9.8ft	13.1ft	16.4ft	19.7ft	23ft	26.2ft	29.5ft	32.8ft	36.1ft	39.4ft	42.7ft	45.9ft	49.2ft	52.5ft	55.8ft	59.1ft	62.3ft	65.6ft
7418lx	1854lx	824lx	464lx	297lx	206lx	151lx	116lx	92lx	74lx	61lx	52lx	44lx	38lx	33lx	29lx	26lx	23lx	21lx	19lx
689.1fc	172.3fc	76.6fc	43.1fc	27.6fc	19.1fc	14.1fc	10.8fc	8.5fc	6.9fc	5.7fc	4.8fc	4.1fc	3.5fc	3.1fc	2.7fc	2.4fc	2.1fc	1.9fc	1.7fc

### Intensities in 0° c-plane

0°	2°	4°	6°	8°	10°	12°	14°	16°	18°	20°	22°	24°	26°	28°	30°	32°	34°	36°	38°
7418	7200	6443	5423	4340	3378	2584	1981	1518	1169	895	668	487	350	245	162	110	73	45	27
100%	97%	87%	73%	59%	46%	35%	27%	20%	16%	12%	9%	7%	5%	3%	2%	1%	1%	1%	0%

### Intensities in 90° c-plane

0°	2°	4°	6°	8°	10°	12°	14°	16°	18°	20°	22°	24°	26°	28°	30°	32°	34°	36°	38°
7418	7118	6418	5422	4362	3388	2609	2000	1541	1185	904	684	496	348	241	163	104	70	45	29
100%	96%	87%	73%	59%	46%	35%	27%	21%	16%	12%	9%	7%	5%	3%	2%	1%	1%	1%	0%

### Intensities in 180° c-plane

0°	2°	4°	6°	8°	10°	12°	14°	16°	18°	20°	22°	24°	26°	28°	30°	32°	34°	36°	38°
7418	7200	6443	5423	4340	3378	2584	1981	1518	1169	895	668	487	350	245	162	110	73	45	27
100%	97%	87%	73%	59%	46%	35%	27%	20%	16%	12%	9%	7%	5%	3%	2%	1%	1%	1%	0%

### Intensities in 270° c-plane

0°	2°	4°	6°	8°	10°	12°	14°	16°	18°	20°	22°	24°	26°	28°	30°	32°	34°	36°	38°
7418	7118	6418	5422	4362	3388	2609	2000	1541	1185	904	684	496	348	241	163	104	70	45	29
100%	96%	87%	73%	59%	46%	35%	27%	21%	16%	12%	9%	7%	5%	3%	2%	1%	1%	1%	0%

Beam angle 50%	Field angle 10%	Cut-off angle 2.5%	Intensity ratio in 120°	Intensity ratio in 90°
18.6°	42.7°	58.7°	99.5%	99.4%