

## Photometric / Colorimetric / Electric Report

Fixture Model:

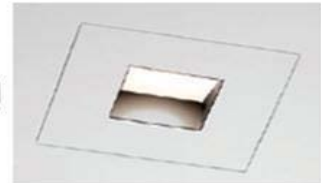
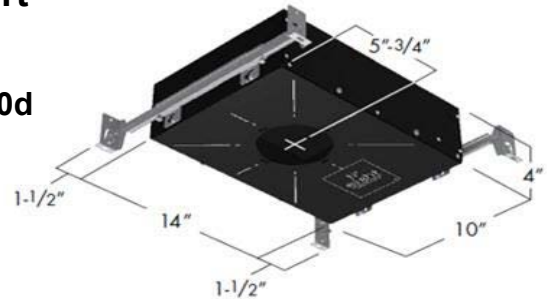
804S-J2S-HI-40-DIM1-8-1000-FS-P-1-WH-WW-8-20d

Trim Model:

FS-P-1-WH-WW-8

Date:

4/4/2022



Light efficiency:

48 Lumen/Watt

Light quality:

CRI: 93.9

Color temperature:

2966 K

CIE 1931:

x: 0.443  
y: 0.411

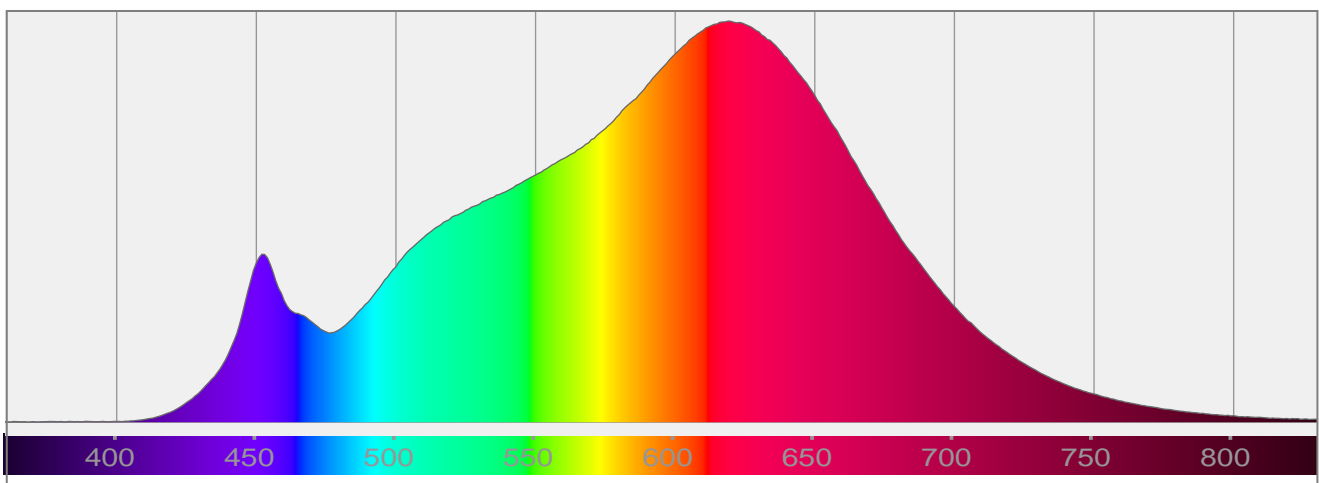
Output: 663 lm

Peak: 410 cd

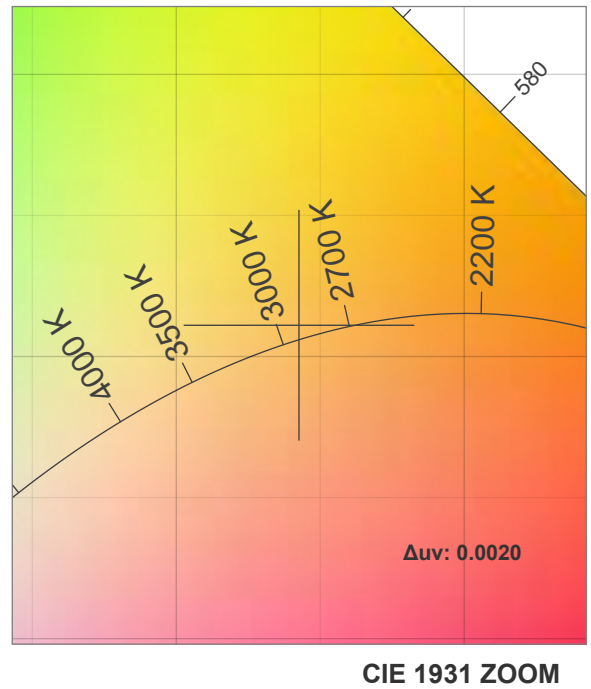
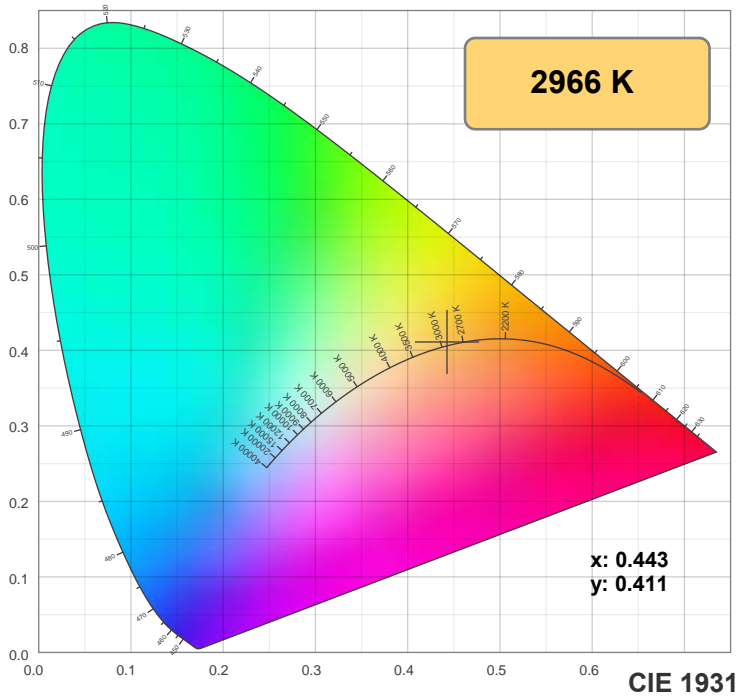
Power: 13.9 W

PF: 0.99

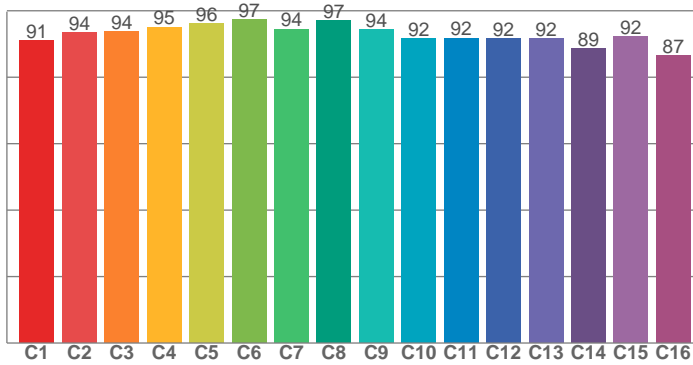
Spectra:



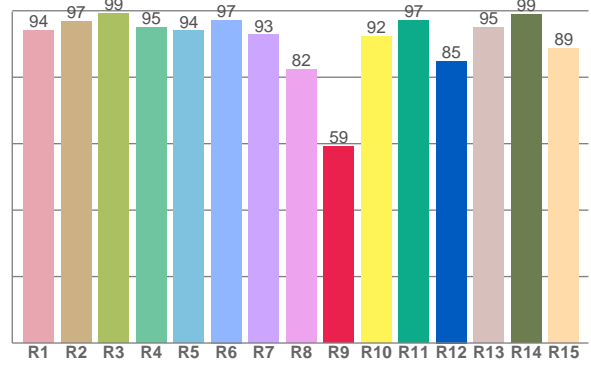
## Color Details



**TM-30: 93.0**



**CRI: 93.9 (R1-R8)**



**CRI R Values:**

R1	R2	R3	R4	R5	R6	R7	R8	R9	R10	R11	R12	R13	R14	R15
94.0	96.9	99.3	95.0	93.9	97.2	92.7	82.3	59.2	92.3	97.0	84.9	94.9	98.8	88.6

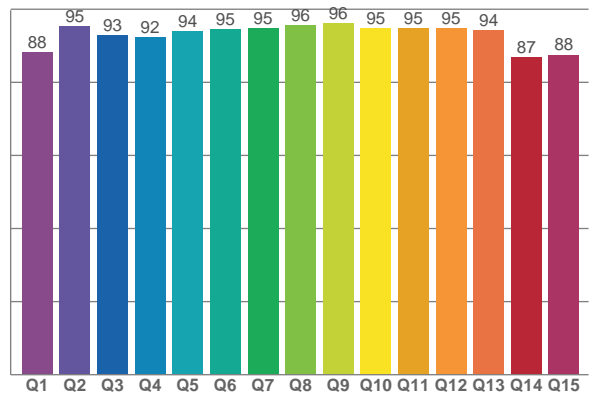
**TM30 C Values:**

C1	C2	C3	C4	C5	C6	C7	C8	C9	C10	C11	C12	C13	C14	C15	C16
91.1	93.6	93.8	95.1	96.1	97.3	94.5	97.1	94.4	91.7	91.8	91.6	91.7	88.7	92.3	86.6

**CQS Q values:**

Q1	Q2	Q3	Q4	Q5	Q6	Q7	Q8	Q9	Q10	Q11	Q12	Q13	Q14	Q15
88.2	95.2	92.9	92.4	93.9	94.5	94.9	95.7	96.3	94.8	94.7	94.8	94.2	86.9	87.5

**CQS: 92.3**



**Color Parameters:**

CCT	CRI	CRI R9	TM30 Rf	TM30 Rg	CQS	x	y	u	v	Δuv
2966 K	93.9	59.2	93.0	97.7	92.3	0.443	0.411	0.251	0.350	0.0020

# TM-30 Details

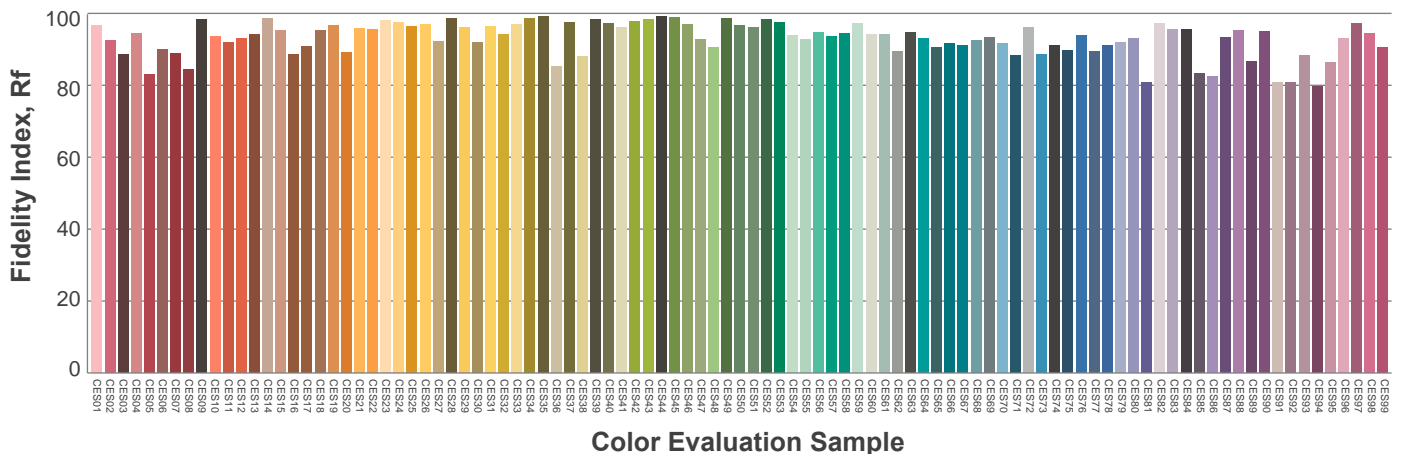
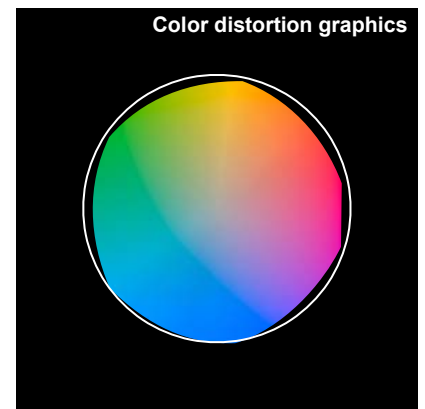
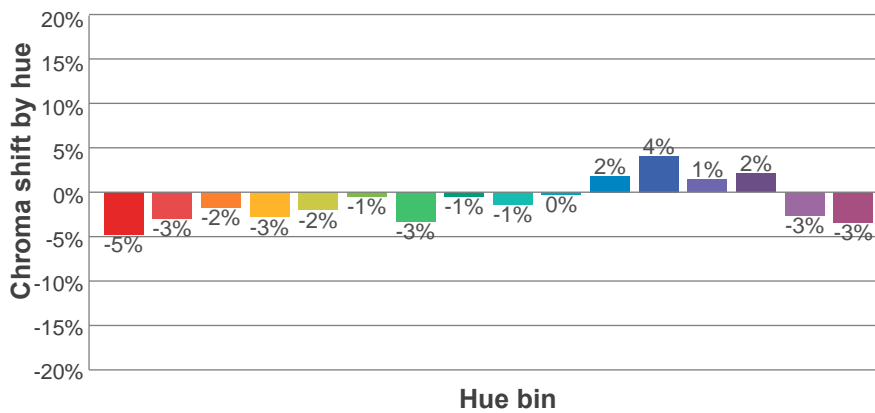
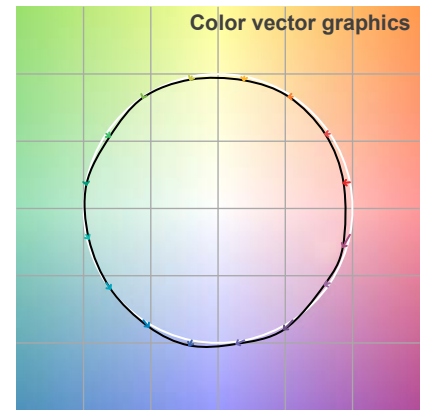
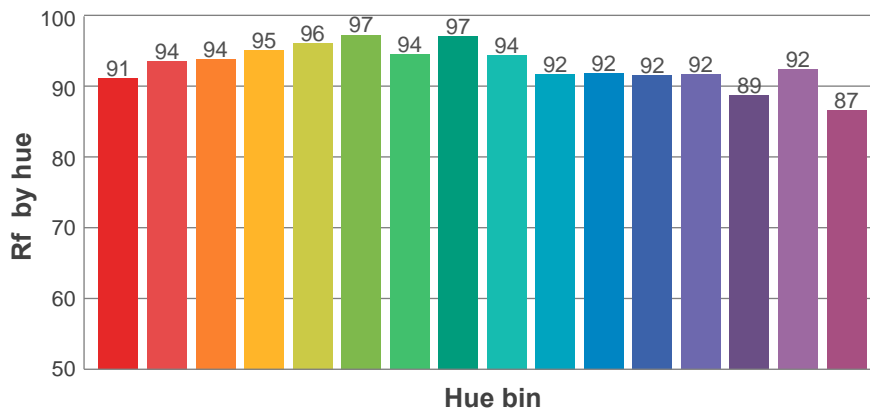
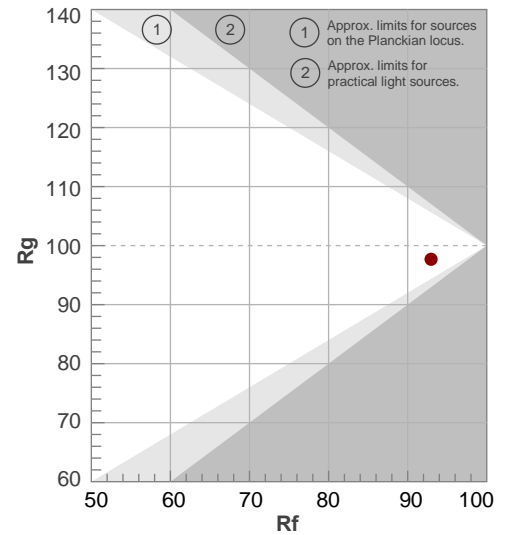
**Rf 93.0**

Fidelity index Rf

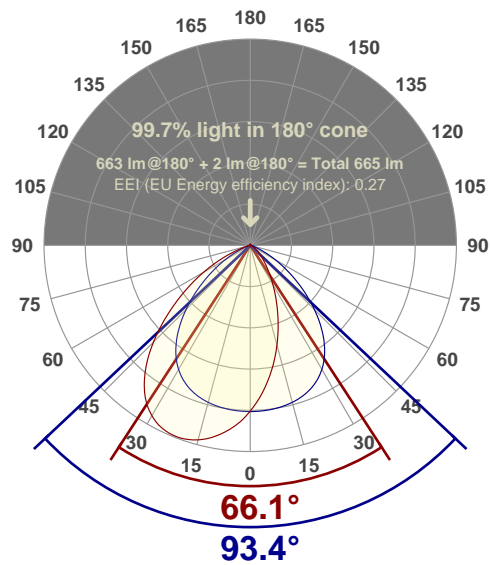
**Rg 97.7**

Gamut index Rg

Hue Bin	R <sub>f</sub>	Shifts (%)	
		Chroma	Hue
1	91	-5%	0%
2	94	-3%	2%
3	94	-2%	3%
4	95	-3%	0%
5	96	-2%	2%
6	97	-1%	1%
7	94	-3%	0%
8	97	-1%	2%
9	94	-1%	3%
10	92	0%	5%
11	92	2%	6%
12	92	4%	-1%
13	92	1%	-6%
14	89	2%	-9%
15	92	-3%	-3%
16	87	-3%	-10%



## Angular Distribution Through 0° and 90° Planes



**Beam Angle: 93.4°W x 66.1°L**

## Beam Details

