

Photometric / Colorimetric / Electric Report

Fixture Model:

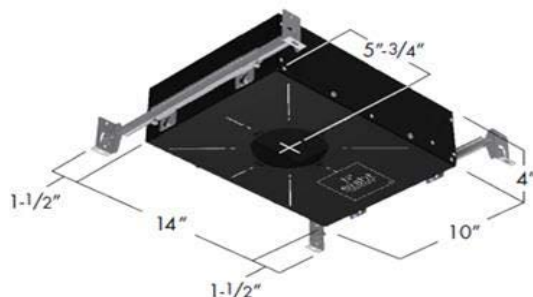
804S-J2S-HI-25-DIM1-8-1400-FS-LG-P-1-WH-NL

Trim Model:

FS-LG-P-1-WH/NL

Date:

4/4/2022



Light efficiency:

59 Lumen/Watt

Light quality:

CRI: 93.3

Color temperature:

3014 K

CIE 1931:

x: 0.438
y: 0.407

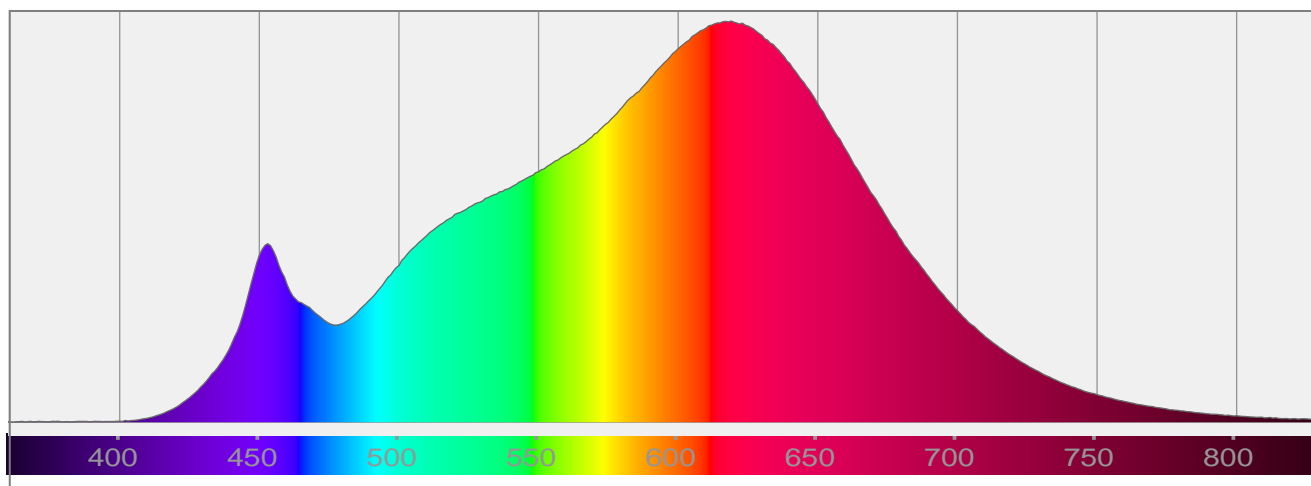
Output: 1181 lm

Peak: 3869 cd

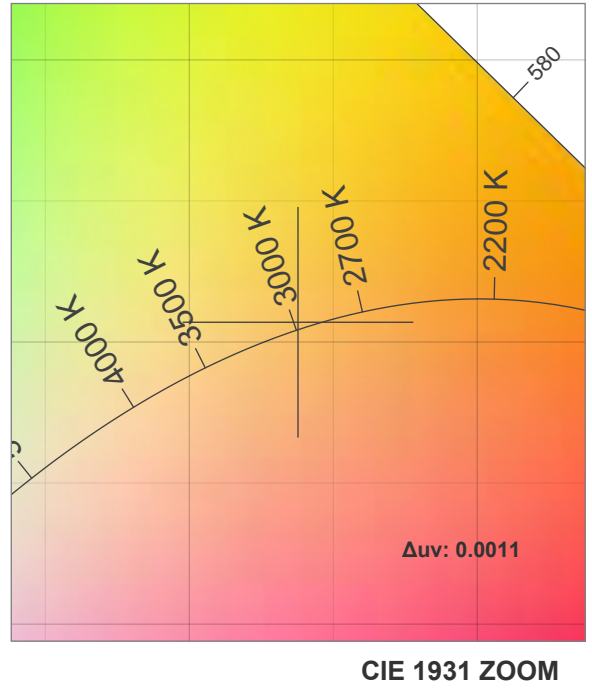
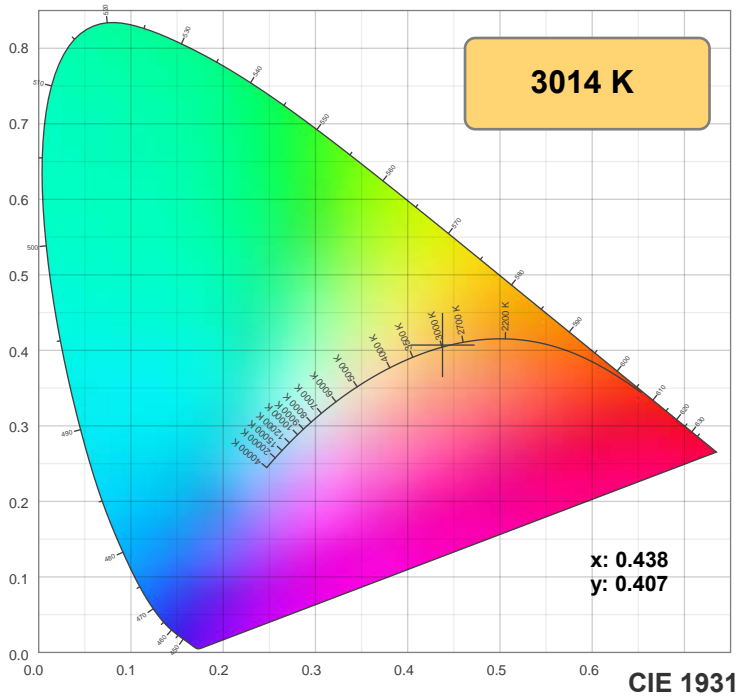
Power: 19.9 W

PF: 0.99

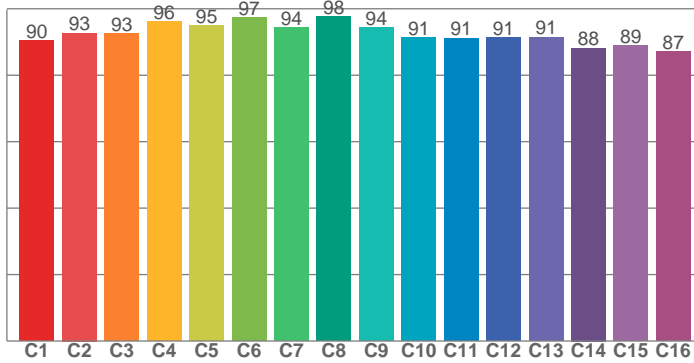
Spectra:



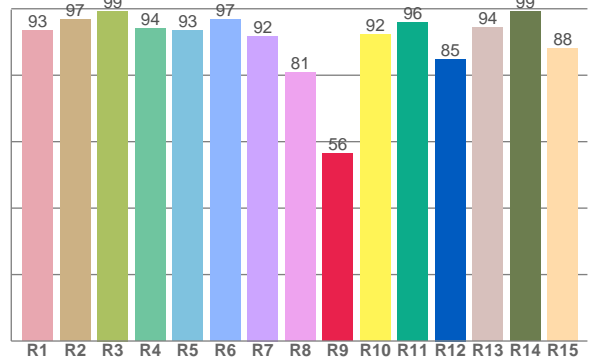
Color Details



TM-30: 92.6



CRI: 93.3 (R1-R8)



CRI R Values:

R1	R2	R3	R4	R5	R6	R7	R8	R9	R10	R11	R12	R13	R14	R15
93.4	96.9	99.3	94.0	93.4	96.8	91.8	80.8	56.3	92.2	95.8	84.9	94.5	99.2	88.0

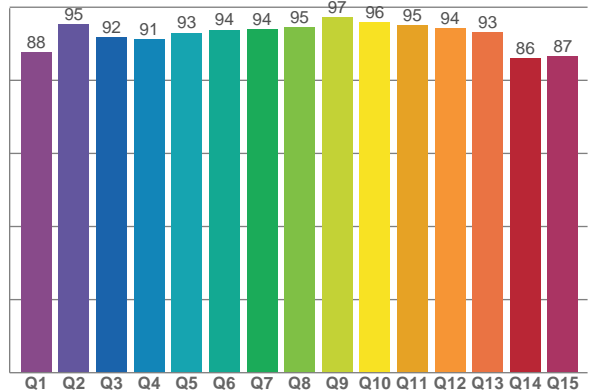
TM30 C Values:

C1	C2	C3	C4	C5	C6	C7	C8	C9	C10	C11	C12	C13	C14	C15	C16
90.5	92.7	92.5	96.2	95.0	97.3	94.4	97.6	94.3	91.3	91.2	91.2	91.5	88.2	89.0	87.0

CQS Q values:

Q1	Q2	Q3	Q4	Q5	Q6	Q7	Q8	Q9	Q10	Q11	Q12	Q13	Q14	Q15
87.8	95.4	91.9	91.2	93.0	93.8	94.0	94.6	97.2	95.8	95.1	94.2	93.2	86.1	86.7

CQS: 91.8



Color Parameters:

CCT	CRI	CRI R9	TM30 Rf	TM30 Rg	CQS	x	y	u	v	Δuv
3014 K	93.3	56.3	92.6	98.0	91.8	0.438	0.407	0.250	0.348	0.0011

TM-30 Details

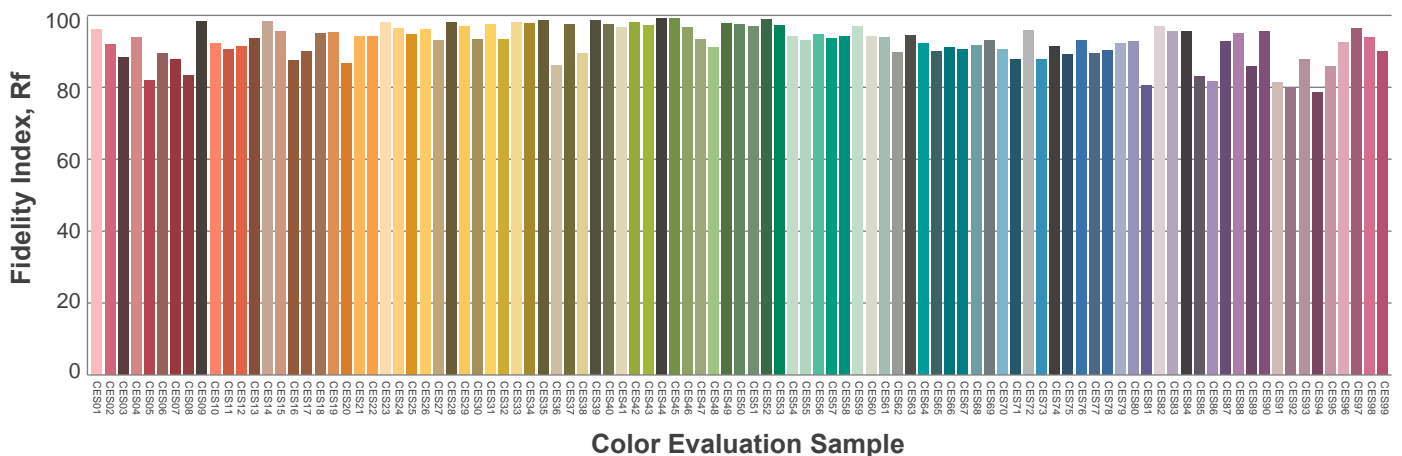
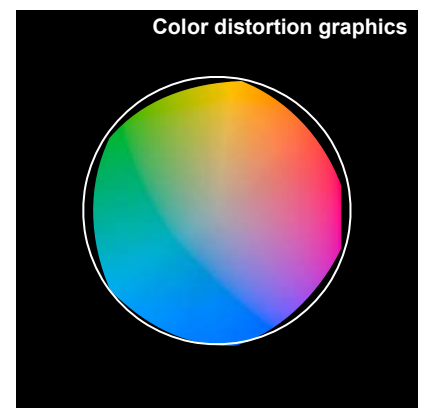
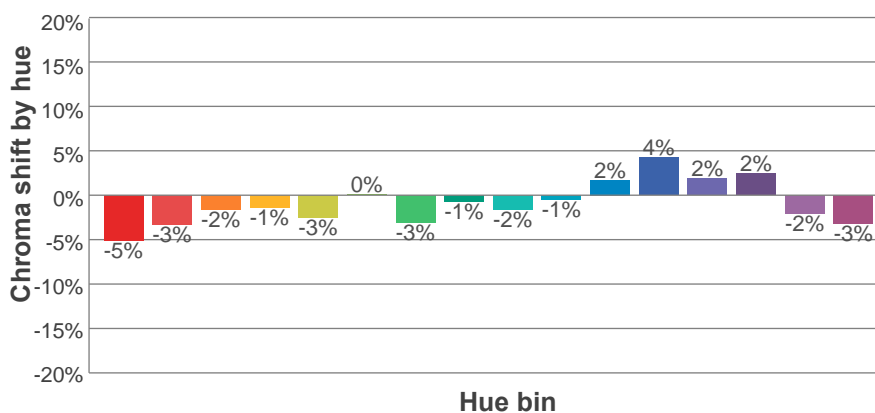
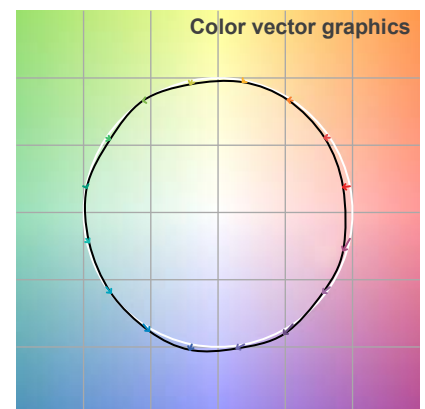
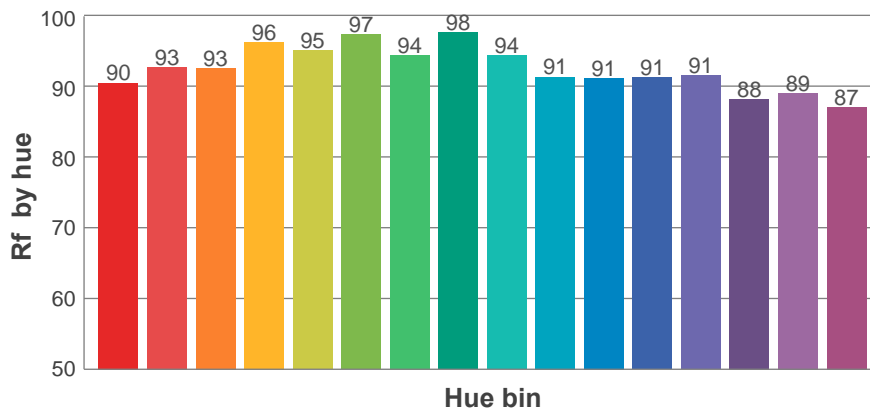
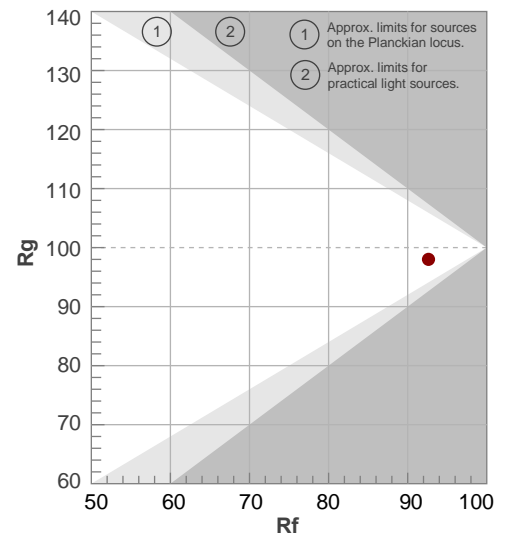
Rf 92.6

Fidelity index Rf

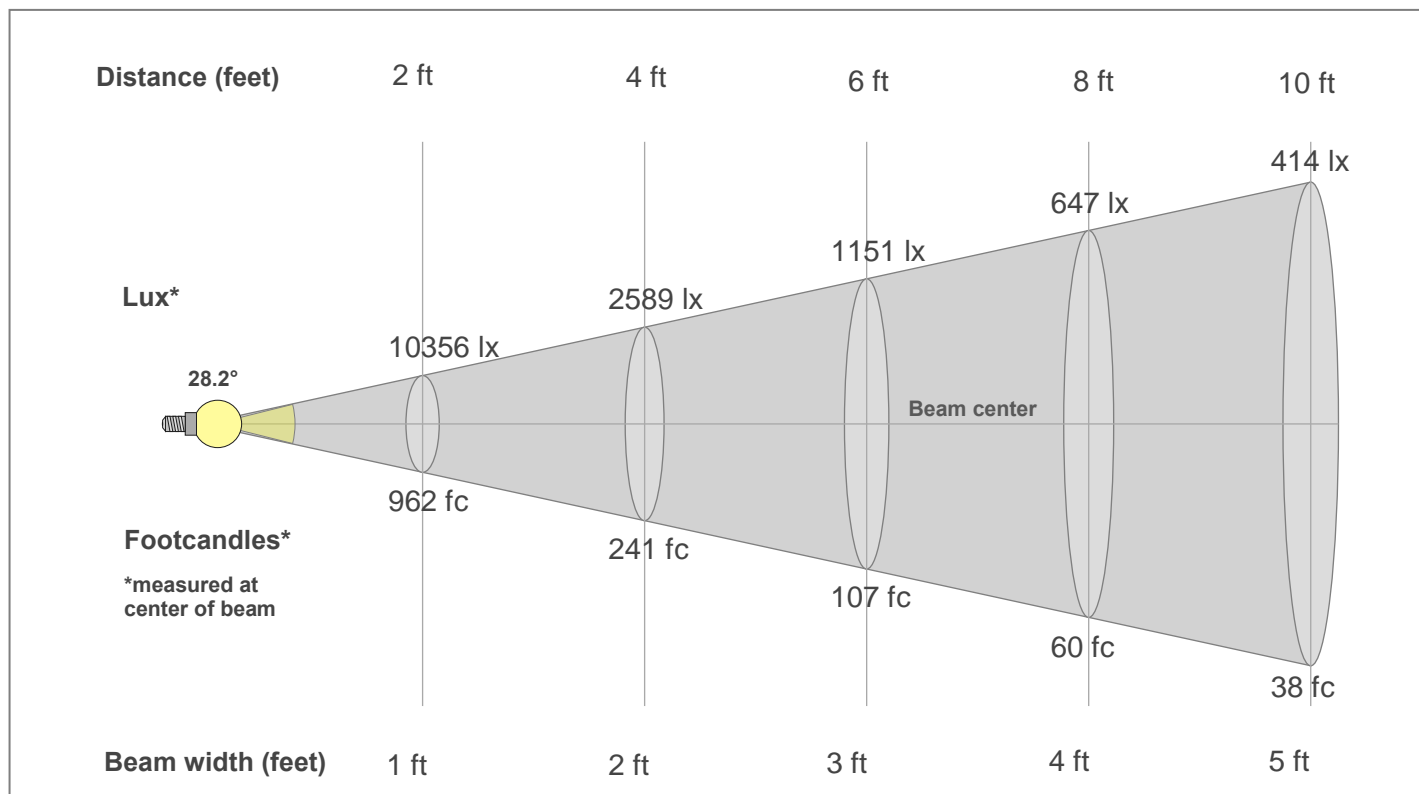
Rg 98.0

Gamut index Rg

Hue Bin	R _f	Shifts (%)	
		Chroma	Hue
1	90	-5%	0%
2	93	-3%	2%
3	93	-2%	3%
4	96	-1%	1%
5	95	-3%	1%
6	97	0%	0%
7	94	-3%	-1%
8	98	-1%	1%
9	94	-2%	3%
10	91	-1%	5%
11	91	2%	6%
12	91	4%	-1%
13	91	2%	-6%
14	88	2%	-9%
15	89	-2%	-6%
16	87	-3%	-10%



Beam Details



Beam Intensities from 1-20m

1m	2m	3m	4m	5m	6m	7m	8m	9m	10m	11m	12m	13m	14m	15m	16m	17m	18m	19m	20m
3.3ft	6.6ft	9.8ft	13.1ft	16.4ft	19.7ft	23ft	26.2ft	29.5ft	32.8ft	36.1ft	39.4ft	42.7ft	45.9ft	49.2ft	52.5ft	55.8ft	59.1ft	62.3ft	65.6ft
3849lx	962lx	428lx	241lx	154lx	107lx	79lx	60lx	48lx	38lx	32lx	27lx	23lx	20lx	17lx	15lx	13lx	12lx	11lx	10lx
357.5fc	89.4fc	39.7fc	22.3fc	14.3fc	9.9fc	7.3fc	5.6fc	4.4fc	3.6fc	3fc	2.5fc	2.1fc	1.8fc	1.6fc	1.4fc	1.2fc	1.1fc	1fc	0.9fc

Intensities in 0° c-plane

0°	2°	4°	6°	8°	10°	12°	14°	16°	18°	20°	22°	24°	26°	28°	30°	32°	34°	36°	38°
3849	3816	3648	3387	3053	2688	2309	1947	1610	1302	1038	810	622	477	371	290	227	178	131	82
100%	99%	95%	88%	79%	70%	60%	51%	42%	34%	27%	21%	16%	12%	10%	8%	6%	5%	3%	2%

Intensities in 90° c-plane

0°	2°	4°	6°	8°	10°	12°	14°	16°	18°	20°	22°	24°	26°	28°	30°	32°	34°	36°	38°
3849	3769	3598	3333	3012	2649	2284	1929	1597	1293	1026	802	616	473	367	286	225	179	142	106
100%	98%	93%	87%	78%	69%	59%	50%	42%	34%	27%	21%	16%	12%	10%	7%	6%	5%	4%	3%

Intensities in 180° c-plane

0°	2°	4°	6°	8°	10°	12°	14°	16°	18°	20°	22°	24°	26°	28°	30°	32°	34°	36°	38°
3849	3793	3603	3326	2999	2650	2289	1947	1616	1320	1055	826	635	487	378	293	229	181	145	116
100%	99%	94%	86%	78%	69%	59%	51%	42%	34%	27%	21%	17%	13%	10%	8%	6%	5%	4%	3%

Intensities in 270° c-plane

0°	2°	4°	6°	8°	10°	12°	14°	16°	18°	20°	22°	24°	26°	28°	30°	32°	34°	36°	38°
3849	3769	3598	3333	3012	2649	2284	1929	1597	1293	1026	802	616	473	367	286	225	179	142	106
100%	98%	93%	87%	78%	69%	59%	50%	42%	34%	27%	21%	16%	12%	10%	7%	6%	5%	4%	3%

Beam angle 50%	Field angle 10%	Cut-off angle 2.5%	Intensity ratio in 120°	Intensity ratio in 90°
28.2°	55.4°	77°	99.5%	98.8%