

Photometric / Colorimetric / Electric Report

Fixture Model:

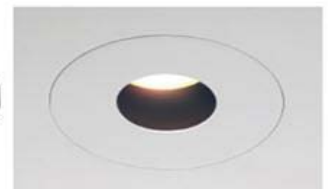
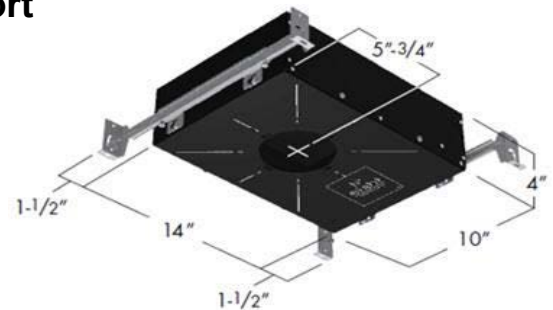
804S-J2S-HI-15-DIM1-8-1000-FR-P-1-WH-35d

Trim Model:

FR-P-1-WH

Date:

3/15/2022



Light efficiency:

63 Lumen/Watt

Light quality:

CRI: 93.8

Color temperature:

3007 K

CIE 1931:

x: 0.439
y: 0.410

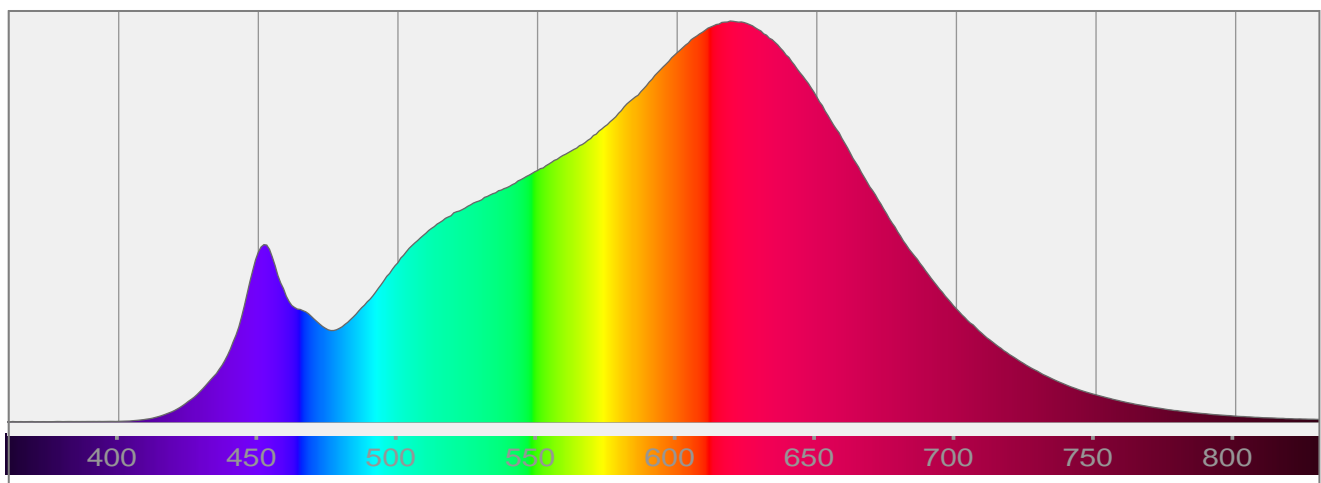
Output: 877 lm

Peak: 5249 cd

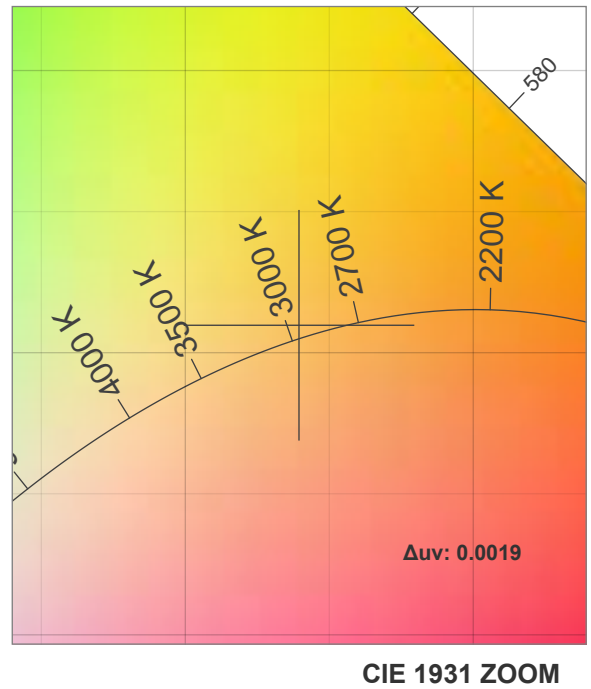
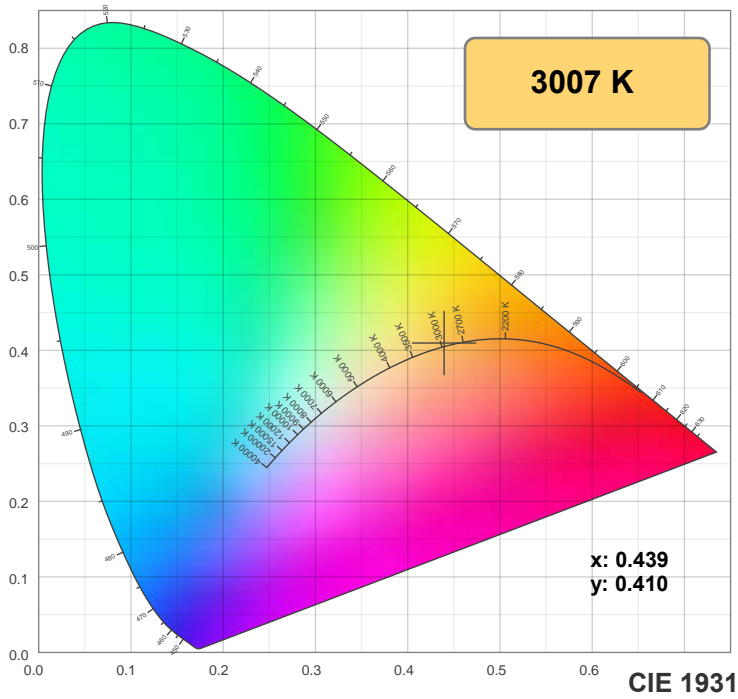
Power: 13.9 W

PF: 0.99

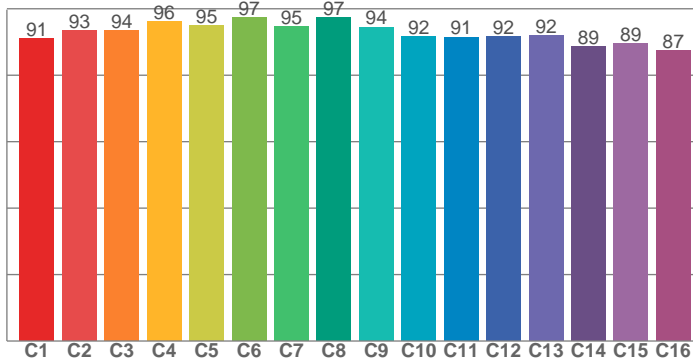
Spectra:



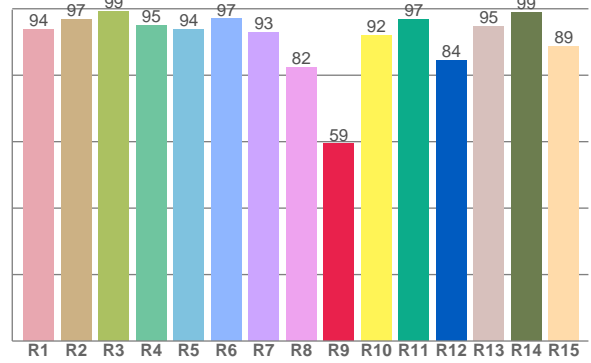
Color Details



TM-30: 93.0



CRI: 93.8 (R1-R8)



CRI R Values:

R1	R2	R3	R4	R5	R6	R7	R8	R9	R10	R11	R12	R13	R14	R15
93.9	96.8	99.1	94.9	93.8	96.9	92.8	82.4	59.3	92.0	96.8	84.4	94.7	98.8	88.6

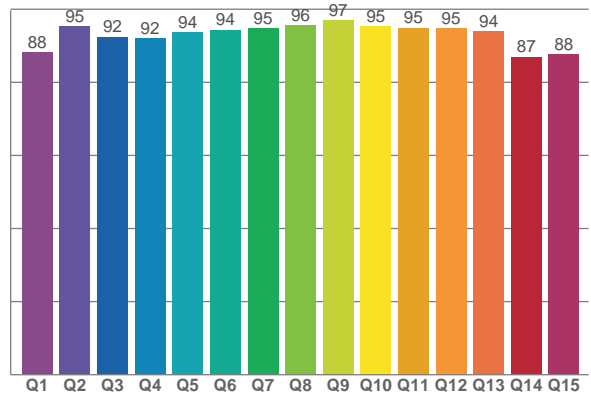
TM30 C Values:

C1	C2	C3	C4	C5	C6	C7	C8	C9	C10	C11	C12	C13	C14	C15	C16
91.1	93.5	93.5	96.2	94.9	97.4	94.6	97.3	94.5	91.6	91.5	91.5	91.8	88.7	89.5	87.5

CQS Q values:

Q1	Q2	Q3	Q4	Q5	Q6	Q7	Q8	Q9	Q10	Q11	Q12	Q13	Q14	Q15
88.3	95.4	92.5	92.1	93.7	94.4	94.8	95.6	96.9	95.3	94.9	94.8	94.1	87.0	87.6

CQS: 92.4



Color Parameters:

CCT	CRI	CRI R9	TM30 Rf	TM30 Rg	CQS	x	y	u	v	Δuv
3007 K	93.8	59.3	93.0	97.9	92.4	0.439	0.410	0.250	0.349	0.0019

TM-30 Details

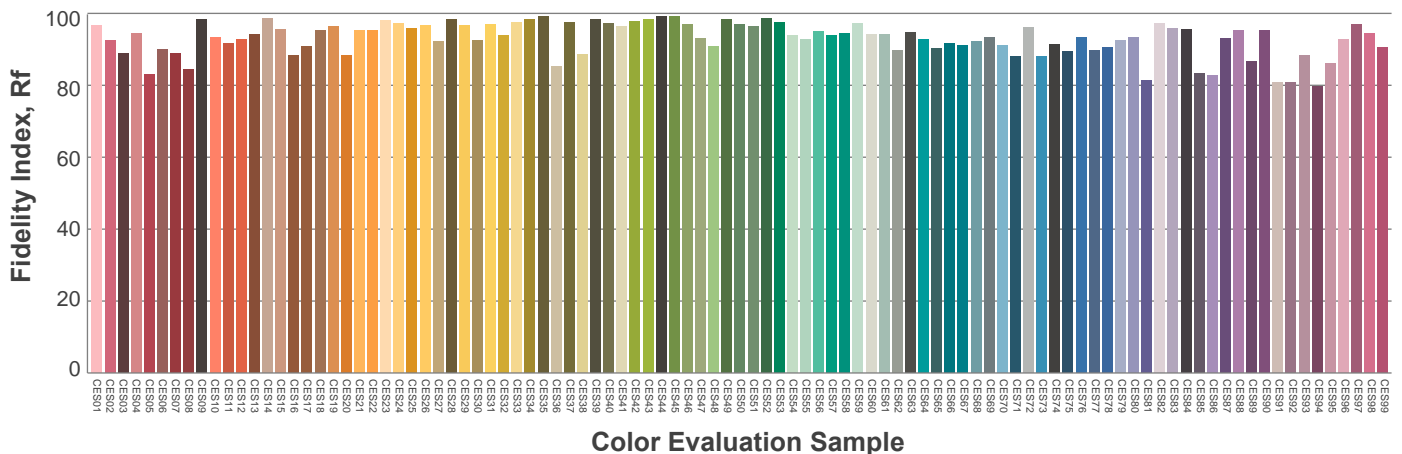
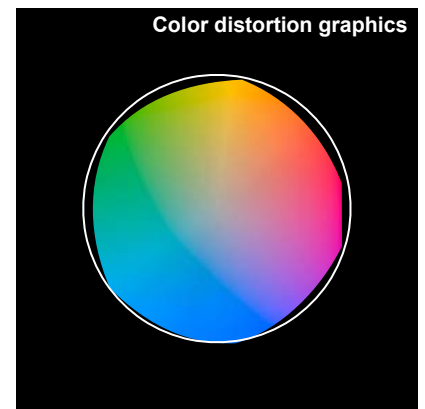
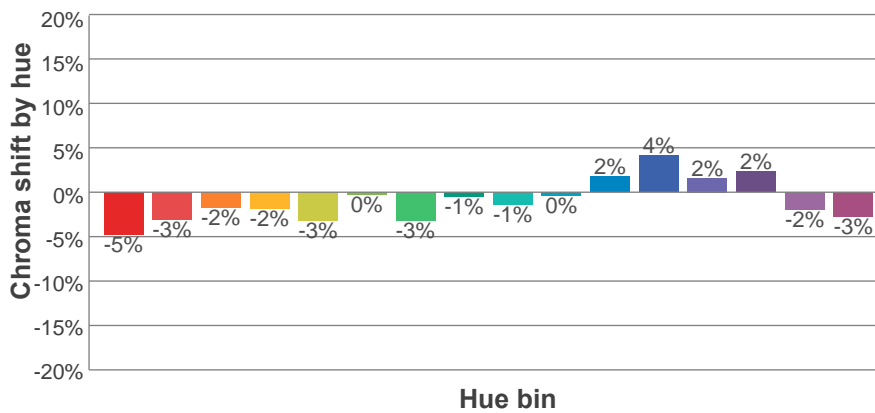
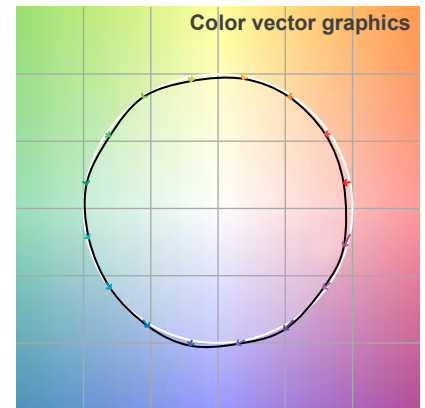
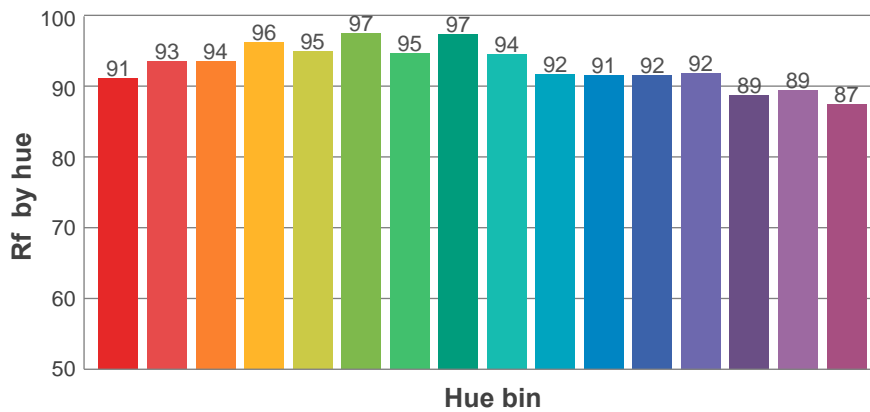
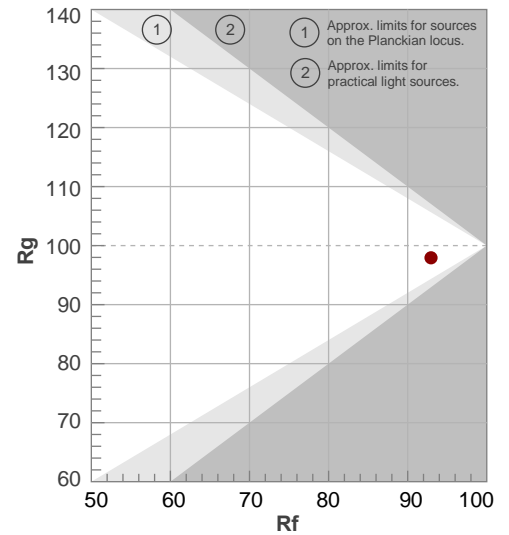
Rf 93.0

Fidelity index Rf

Rg 97.9

Gamut index Rg

Hue Bin	R _f	Shifts (%)	
		Chroma	Hue
1	91	-5%	0%
2	93	-3%	2%
3	94	-2%	3%
4	96	-2%	0%
5	95	-3%	1%
6	97	0%	1%
7	95	-3%	0%
8	97	-1%	1%
9	94	-1%	3%
10	92	0%	5%
11	91	2%	6%
12	92	4%	-1%
13	92	2%	-6%
14	89	2%	-9%
15	89	-2%	-6%
16	87	-3%	-9%



Aiming Angle

