

Photometric / Colorimetric / Electric Report

Fixture Model:

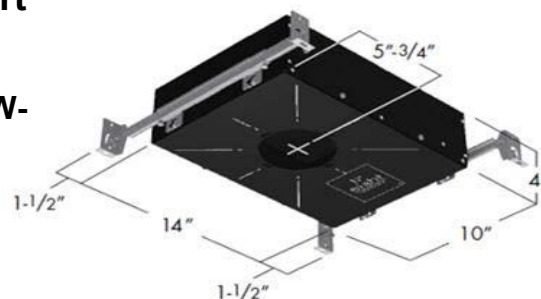
804S-J2S-HI-2-10-FL-DIM1-8-1000-FR-P-1-WH-WW-8-20d

Trim Model:

FR-P-1-WH-WW-8

Date:

6/29/2022



Light efficiency:

31 Lumen/Watt

Light quality:

CRI: 94.1

Color temperature:

2976 K

CIE 1931:

x: 0.437
y: 0.402

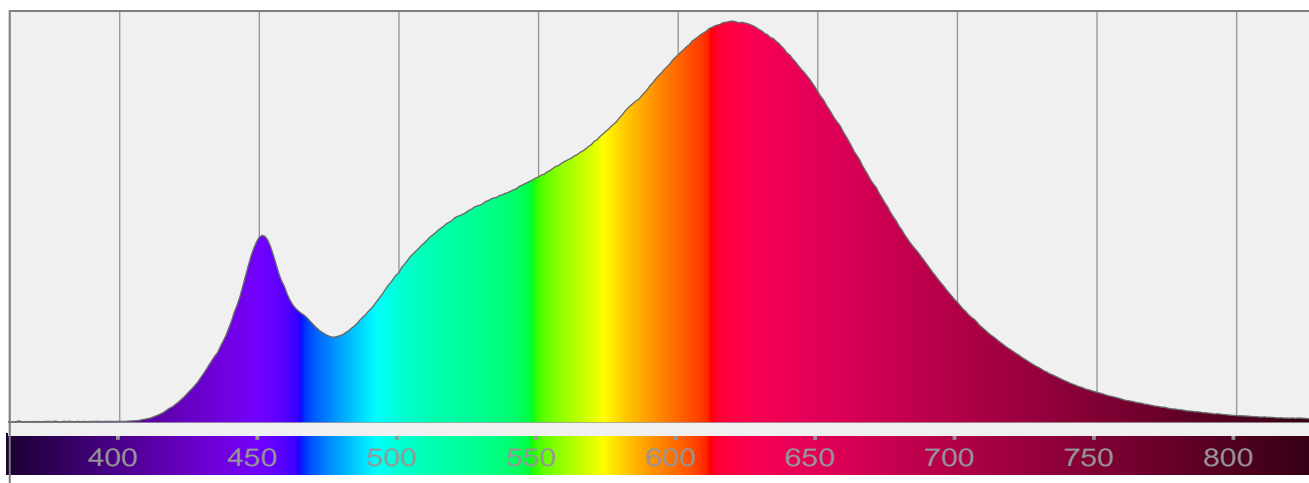
Output: 452 lm

Peak: 329 cd

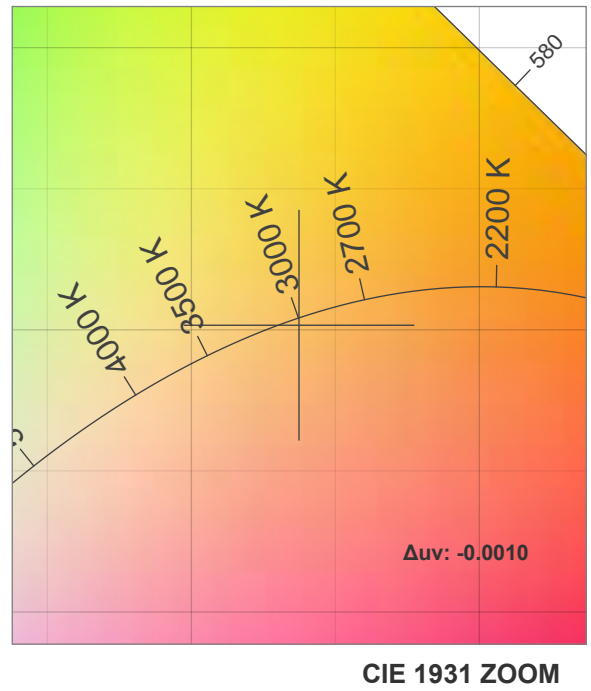
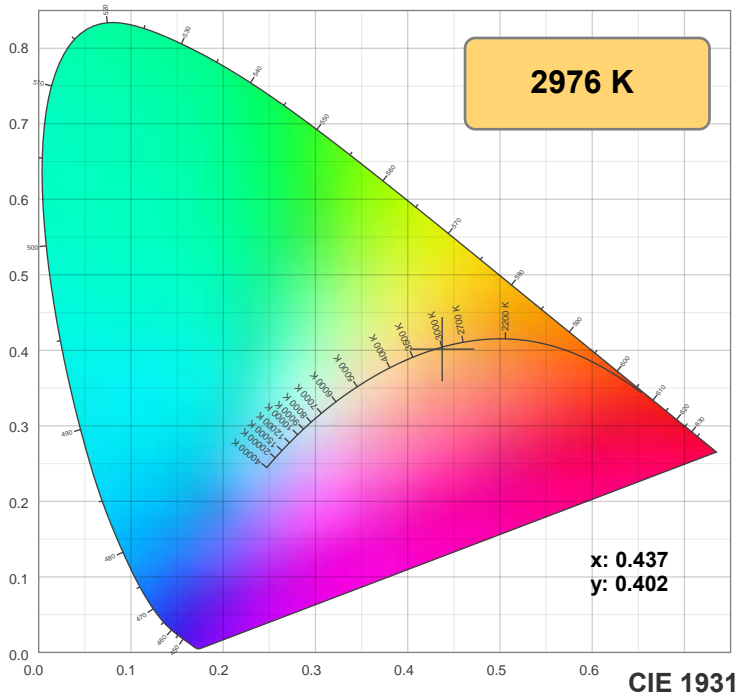
Power: 14.4 W

PF: 0.99

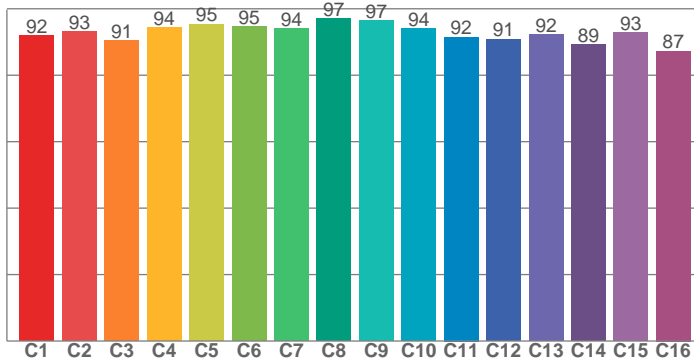
Spectra:



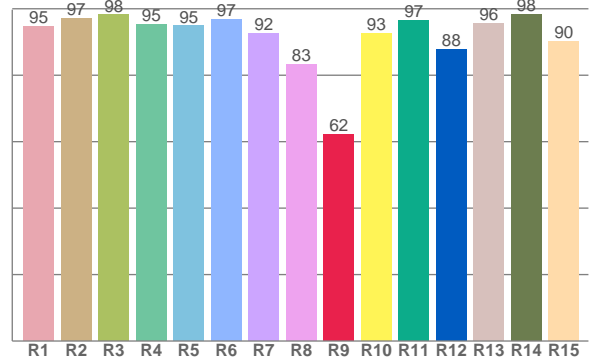
Color Details



TM-30: 92.9



CRI: 94.1 (R1-R8)



CRI R Values:

R1	R2	R3	R4	R5	R6	R7	R8	R9	R10	R11	R12	R13	R14	R15
94.8	97.1	98.2	95.2	94.8	96.7	92.5	83.4	62.2	92.5	96.5	87.7	95.5	98.3	90.2

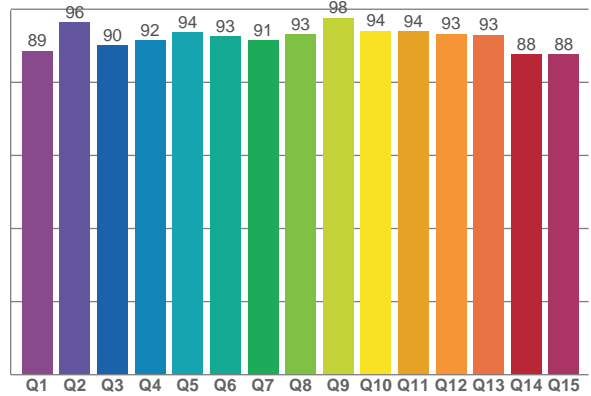
TM30 C Values:

C1	C2	C3	C4	C5	C6	C7	C8	C9	C10	C11	C12	C13	C14	C15	C16
92.0	93.1	90.5	94.3	95.4	94.5	94.1	97.1	96.6	94.0	91.5	90.9	92.3	89.2	92.8	87.3

CQS Q values:

Q1	Q2	Q3	Q4	Q5	Q6	Q7	Q8	Q9	Q10	Q11	Q12	Q13	Q14	Q15
88.6	96.4	90.3	91.6	93.7	92.6	91.4	93.1	97.7	94.1	93.9	93.3	93.0	87.6	87.7

CQS: 91.7



Color Parameters:

CCT	CRI	CRI R9	TM30 Rf	TM30 Rg	CQS	x	y	u	v	Δuv
2976 K	94.1	62.2	92.9	100.6	91.7	0.437	0.402	0.252	0.347	-0.0010

TM-30 Details

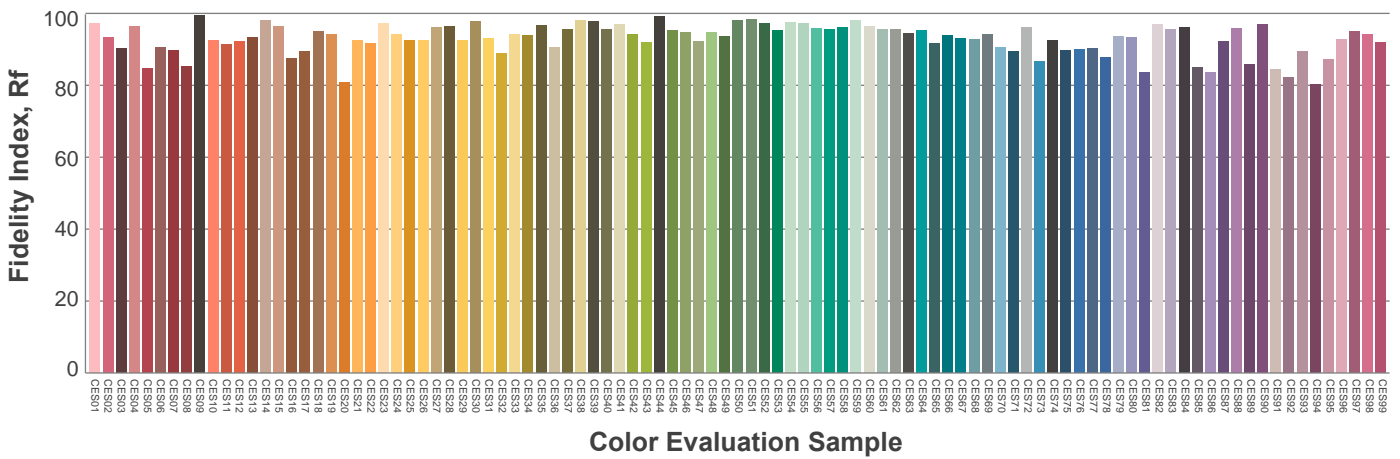
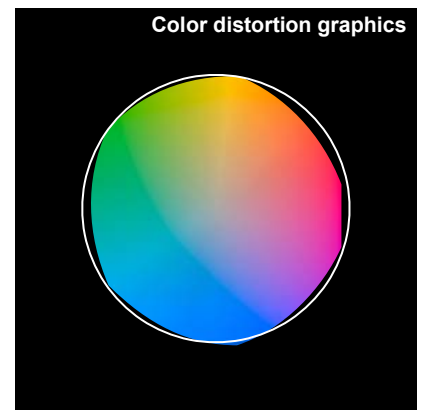
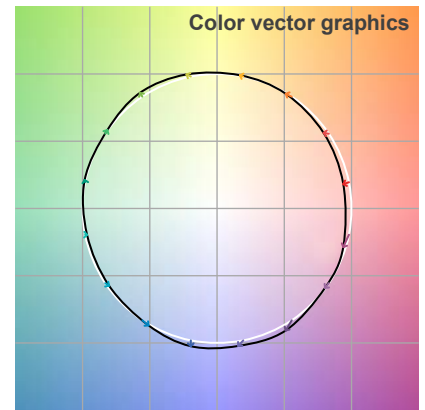
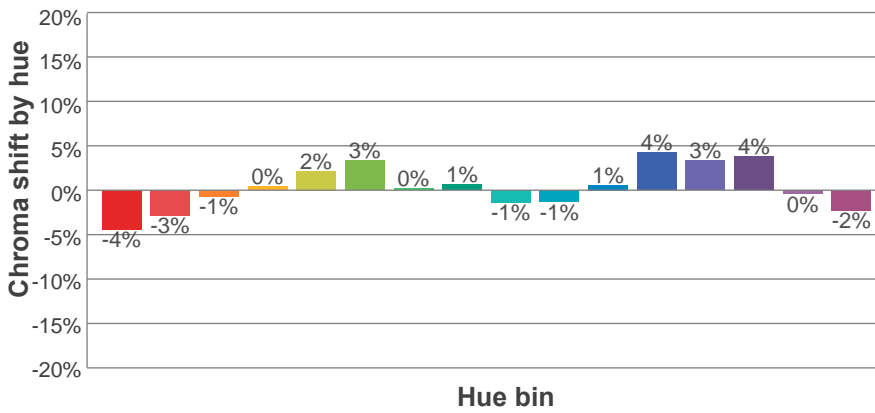
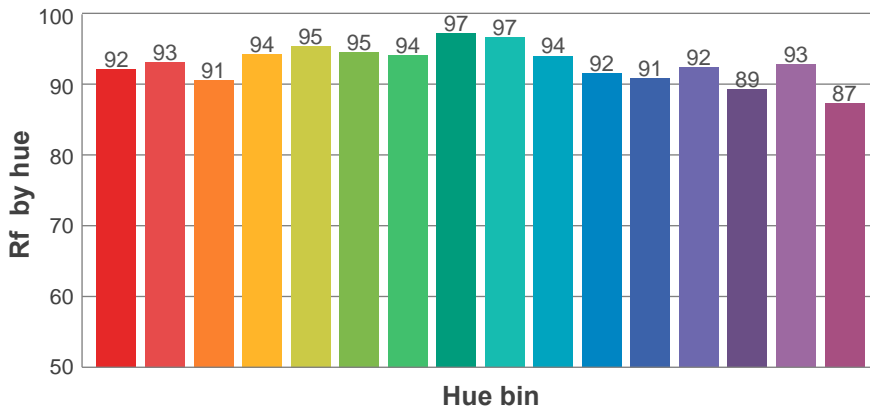
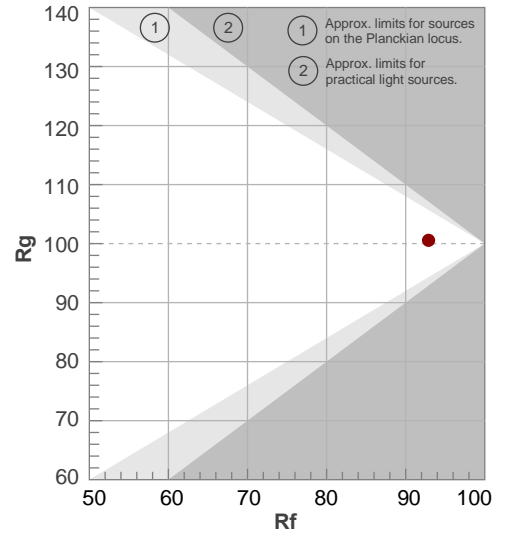
Rf 92.9

Fidelity index R_f

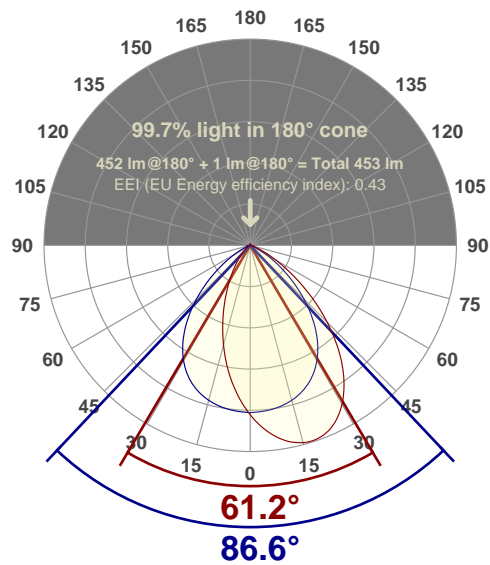
Rg 100.6

Gamut index Rg

		Shifts (%)	
Hue Bin	R_f	Chroma	Hue
1	92	-4%	-1%
2	93	-3%	3%
3	91	-1%	5%
4	94	0%	3%
5	95	2%	3%
6	95	3%	0%
7	94	0%	-3%
8	97	1%	-2%
9	97	-1%	0%
10	94	-1%	3%
11	92	1%	6%
12	91	4%	1%
13	92	3%	-4%
14	89	4%	-8%
15	93	0%	-4%
16	87	-2%	-10%



Angular Distribution Through 0° and 90° Planes



Beam Angle: 86.6°W x 61.2°L

Beam Details

