

Photometric / Colorimetric / Electric Report

Fixture Model:

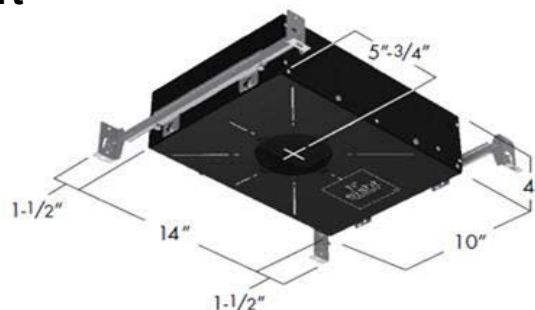
804S-J2S-HI-15-DIM1-8-1400-FR-LG-P-1-WH-NL

Trim Model:

FR-LG-P-1-WH/NL

Date:

3/14/2022



Light efficiency:

68 Lumen/Watt

Light quality:

CRI: 93.2

Color temperature:

2997 K

CIE 1931:

x: 0.439
y: 0.408

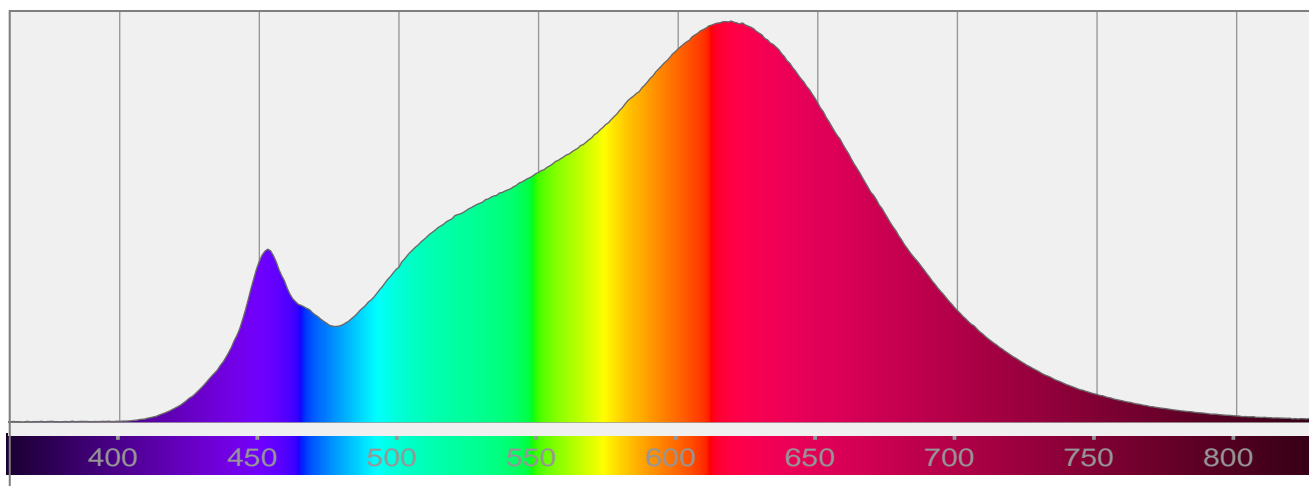
Output: 1350 lm

Peak: 7602 cd

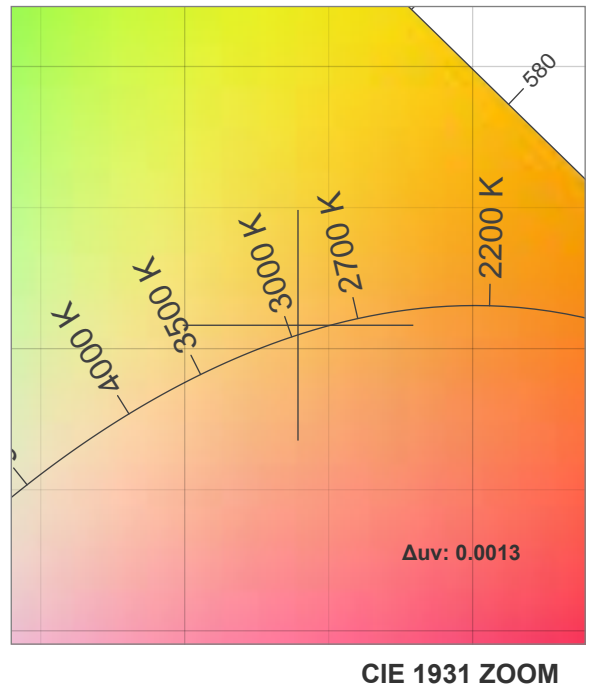
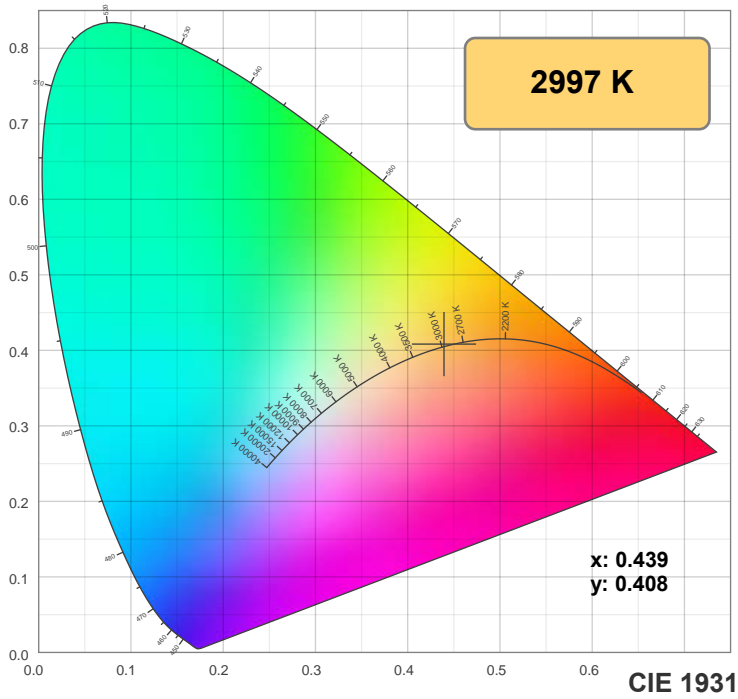
Power: 19.8 W

PF: 0.99

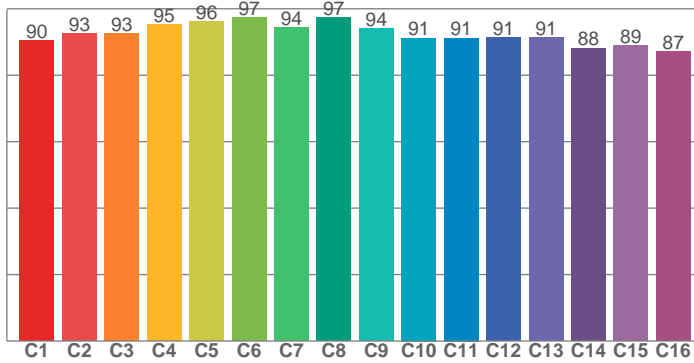
Spectra:



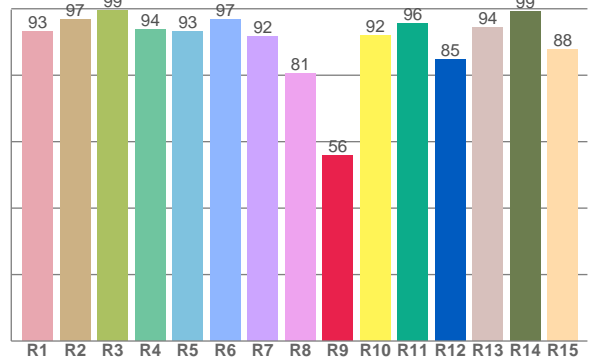
Color Details



TM-30: 92.6



CRI: 93.2 (R1-R8)



CRI R Values:

R1	R2	R3	R4	R5	R6	R7	R8	R9	R10	R11	R12	R13	R14	R15
93.2	96.7	99.4	93.8	93.2	96.8	91.8	80.6	55.7	91.9	95.6	84.7	94.3	99.2	87.7

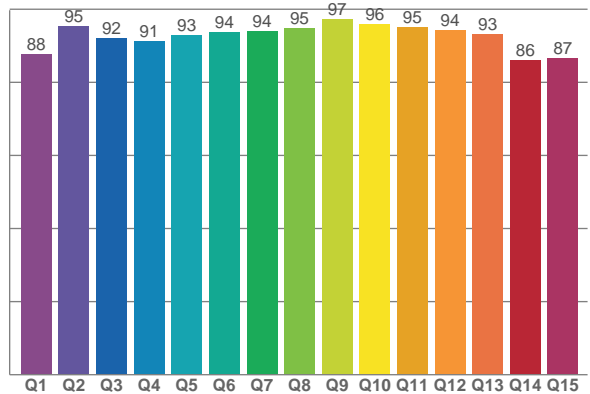
TM30 C Values:

C1	C2	C3	C4	C5	C6	C7	C8	C9	C10	C11	C12	C13	C14	C15	C16
90.3	92.7	92.6	95.2	96.2	97.3	94.3	97.3	94.2	91.2	91.2	91.3	91.4	88.2	88.9	87.0

CQS Q values:

Q1	Q2	Q3	Q4	Q5	Q6	Q7	Q8	Q9	Q10	Q11	Q12	Q13	Q14	Q15
87.6	95.3	92.0	91.3	92.9	93.7	94.0	94.7	97.2	95.8	95.0	94.2	93.2	85.9	86.6

CQS: 91.8



Color Parameters:

CCT	CRI	CRI R9	TM30 Rf	TM30 Rg	CQS	x	y	u	v	Δuv
2997 K	93.2	55.7	92.6	97.8	91.8	0.439	0.408	0.250	0.349	0.0013

TM-30 Details

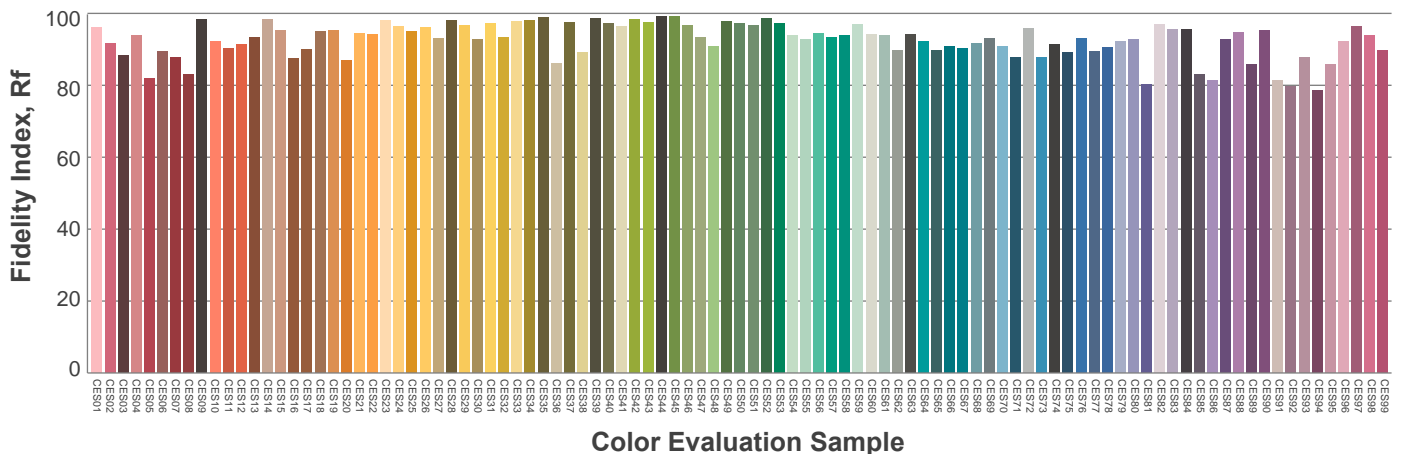
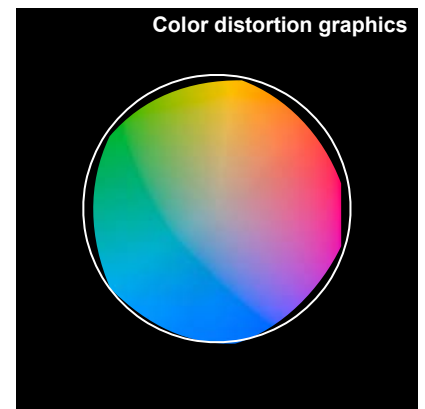
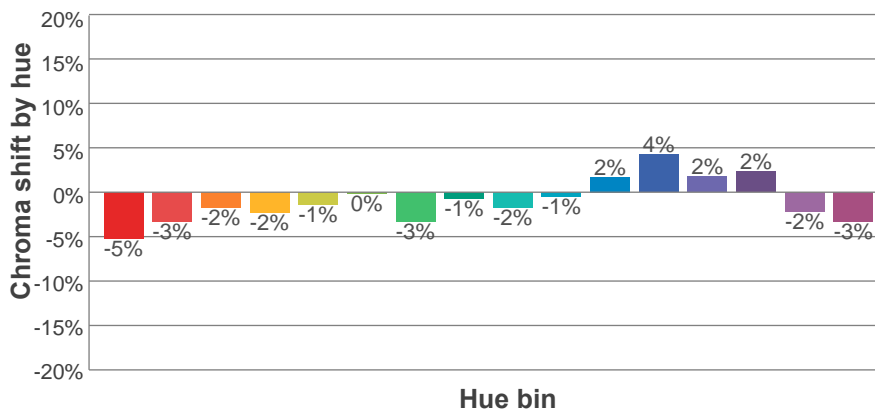
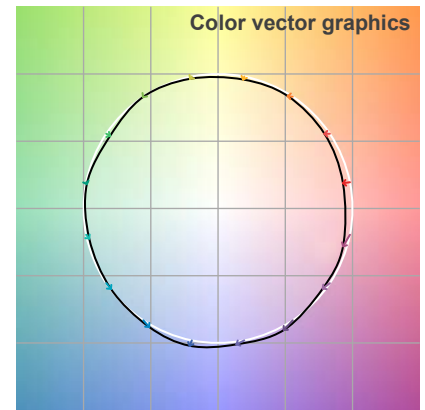
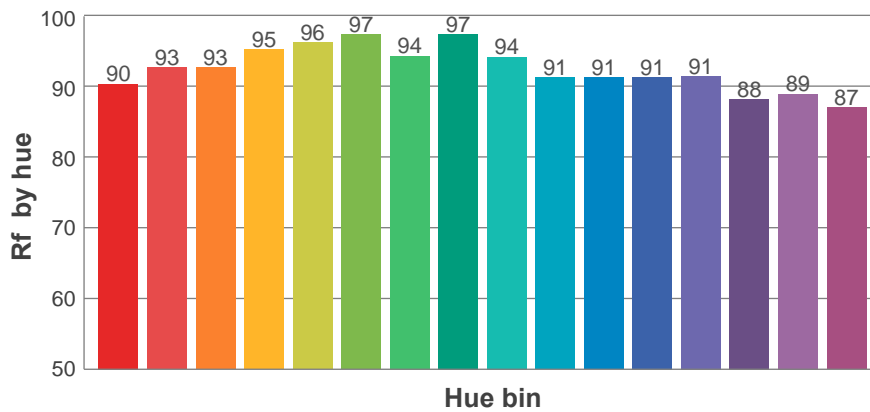
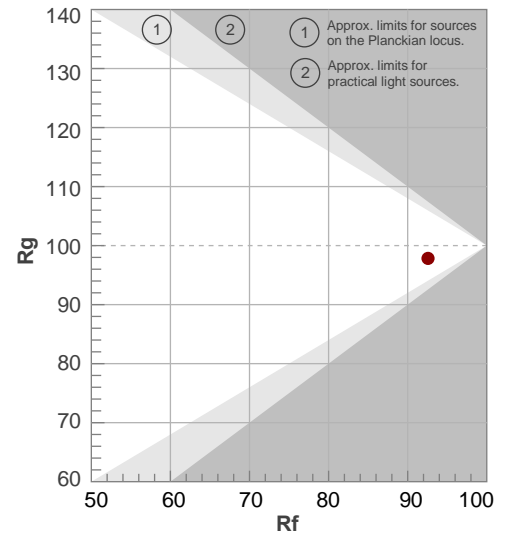
Rf 92.6

Fidelity index Rf

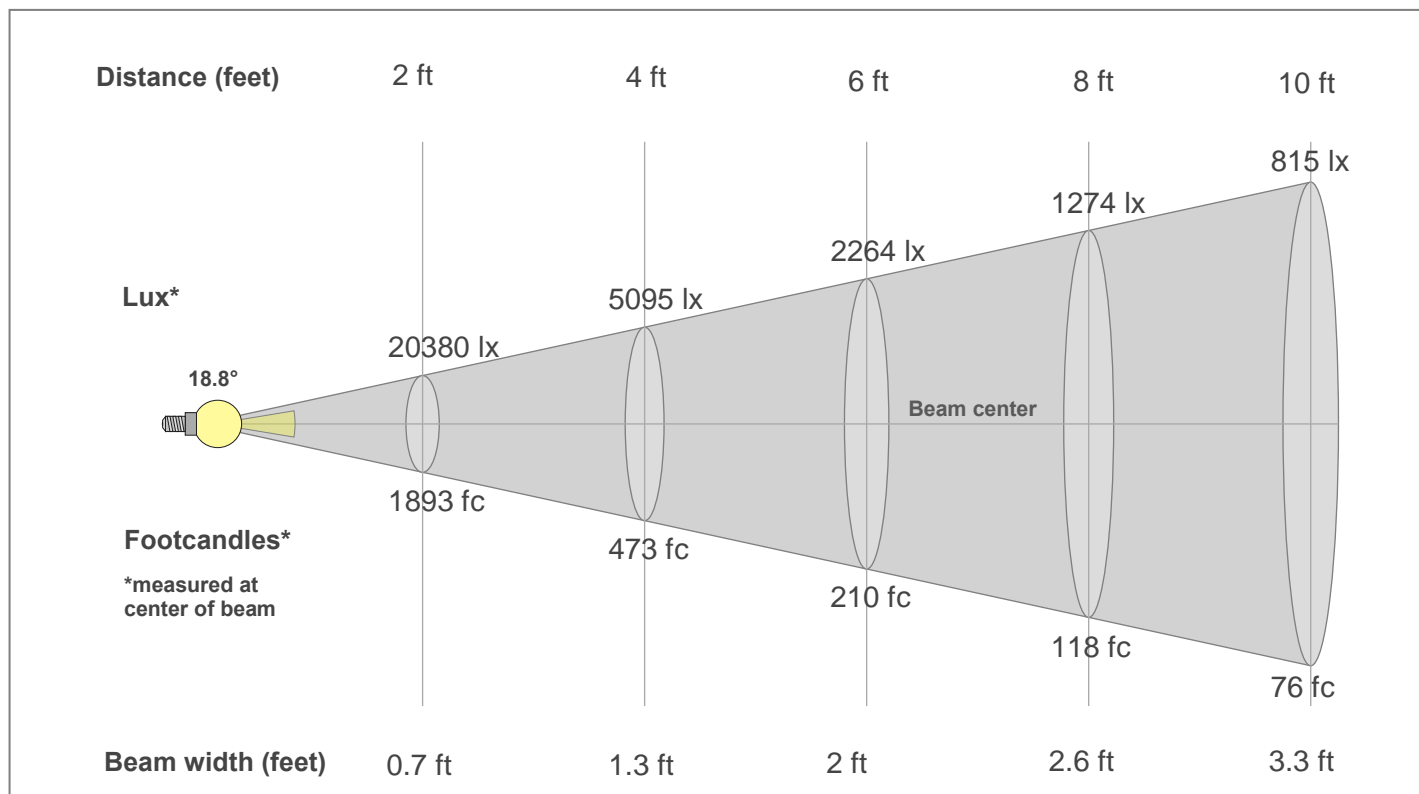
Rg 97.8

Gamut index Rg

Hue Bin	R _f	Shifts (%)	
		Chroma	Hue
1	90	-5%	0%
2	93	-3%	2%
3	93	-2%	3%
4	95	-2%	0%
5	96	-1%	2%
6	97	0%	0%
7	94	-3%	0%
8	97	-1%	1%
9	94	-2%	3%
10	91	-1%	5%
11	91	2%	6%
12	91	4%	-1%
13	91	2%	-6%
14	88	2%	-10%
15	89	-2%	-6%
16	87	-3%	-9%



Beam Details



Beam Intensities from 1-20m

1m	2m	3m	4m	5m	6m	7m	8m	9m	10m	11m	12m	13m	14m	15m	16m	17m	18m	19m	20m
3.3ft	6.6ft	9.8ft	13.1ft	16.4ft	19.7ft	23ft	26.2ft	29.5ft	32.8ft	36.1ft	39.4ft	42.7ft	45.9ft	49.2ft	52.5ft	55.8ft	59.1ft	62.3ft	65.6ft
7574lx	1893lx	842lx	473lx	303lx	210lx	155lx	118lx	94lx	76lx	63lx	53lx	45lx	39lx	34lx	30lx	26lx	23lx	21lx	19lx
703.6fc	175.9fc	78.2fc	44fc	28.1fc	19.5fc	14.4fc	11fc	8.7fc	7fc	5.8fc	4.9fc	4.2fc	3.6fc	3.1fc	2.7fc	2.4fc	2.2fc	1.9fc	1.8fc

Intensities in 0° c-plane

0°	2°	4°	6°	8°	10°	12°	14°	16°	18°	20°	22°	24°	26°	28°	30°	32°	34°	36°	38°
7574	7259	6533	5523	4447	3489	2700	2094	1625	1260	975	754	572	434	333	260	204	159	126	89
100%	96%	86%	73%	59%	46%	36%	28%	21%	17%	13%	10%	8%	6%	4%	3%	3%	2%	2%	1%

Intensities in 90° c-plane

0°	2°	4°	6°	8°	10°	12°	14°	16°	18°	20°	22°	24°	26°	28°	30°	32°	34°	36°	38°
7574	7338	6594	5599	4486	3509	2698	2067	1585	1219	940	718	543	410	313	243	190	150	117	86
100%	97%	87%	74%	59%	46%	36%	27%	21%	16%	12%	9%	7%	5%	4%	3%	3%	2%	2%	1%

Intensities in 180° c-plane

0°	2°	4°	6°	8°	10°	12°	14°	16°	18°	20°	22°	24°	26°	28°	30°	32°	34°	36°	38°
7574	7279	6526	5541	4471	3478	2688	2058	1590	1223	934	710	541	400	302	233	182	149	117	83
100%	96%	86%	73%	59%	46%	35%	27%	21%	16%	12%	9%	7%	5%	4%	3%	2%	2%	2%	1%

Intensities in 270° c-plane

0°	2°	4°	6°	8°	10°	12°	14°	16°	18°	20°	22°	24°	26°	28°	30°	32°	34°	36°	38°
7574	7338	6594	5599	4486	3509	2698	2067	1585	1219	940	718	543	410	313	243	190	150	117	86
100%	97%	87%	74%	59%	46%	36%	27%	21%	16%	12%	9%	7%	5%	4%	3%	3%	2%	2%	1%

Beam angle 50%	Field angle 10%	Cut-off angle 2.5%	Intensity ratio in 120°	Intensity ratio in 90°
18.8°	43.3°	64.2°	99.4%	98.9%